



# BIOLOGY

## BOOKS - JMD BIOLOGY (PUNJABI ENGLISH)

### Reproduction health

#### Exercise

1. ovulation takes place on the day ..... of menstrual cycle.

A. 7<sup>th</sup>

B. 10<sup>th</sup>

C. 14<sup>th</sup>

D. 17<sup>th</sup>

**Answer: C**



**Watch Video Solution**

2. geometric representation of age structure is a characteristics of

A. landscape

B. ecosystem

C. population

D. biotic community

**Answer: C**



**Watch Video Solution**

**3.** in the human female, menstruation can be deferred by the administration of:

A. FSH only

B. LH only

C. combination of FSH and LH

D. combination of estrogen and progesterone

**Answer: D**



**Watch Video Solution**

4. biotic potential of human female is

A. 471

B. 481

C. 491

D. 461

**Answer: B**



**View Text Solution**

**5. Lippes loop is**

A. inert IUI

B. inert IUD

C. Active IUI

D. Active IUD

**Answer: B**



**Watch Video Solution**

6. the population of an insect species shows and explosive increase in number during rainy season followed by its disappearance at the end of the season. what does the show?

A. a population of its predators increases enormously.

B. S-shaped or sigmoid growth of this insect.

C. the food plants mature and die at the end of the rainy season.

D. its population growth curve is of J-type

**Answer: D**



**Watch Video Solution**

7. given below are four methods (a-d) and their modes of action (i-iv) in achieving contraception. select their correct matching from the four options that follow

Method(a. the pill, b. condom, c.Vasectomy, d.Copper-T), Mode of Action(i. prevents sperms reaching cervix, ii. prevents implantation, iii. prevents ovulation, iv.Semen contains no sperm)

A. a-iii, b-iv, c-i, d-ii

B. a-ii, b-iii, c-i, d-iv



C. a-iii, b-i, c-iv, d-ii

D. a-iv, b-i, c-ii, d-iii

**Answer: C**



**Watch Video Solution**

8. consider the statements given below regarding contraception answer as directed thereafter.

(a) medical termination of pregnancy (MTP) during first trimester is generally save, (b)

generally chances of conception are Nil until mother breast-feeds the infant up to 2 years.

(c) intrauterine devices like copper-T are effective contraceptives. (d) Contraceptive pills may be taken up to 1 week after coitus to prevent conception.

which two of the above statements are correct?

A. (a),(c)

B. (a),(b)

C. (b),(c)

D. (c),(d)

**Answer: A**



**Watch Video Solution**

**9. July 11th is observed as**

A. no Tobacco day

B. World health day

C. World population day

D. World environment day

**Answer: C**



**Watch Video Solution**

**10.** the permissible use of the amniocentesis technique is for:

A. artificial insemination

B. transfer of embryo into the uterus of a surrogate mother

C. detecting any genetic abnormality.

D. detecting sex of the unborn foetus.

**Answer: A**



**Watch Video Solution**

**11.** Cu ions released from copper-releasing Intra Uterine Devices(IUDs)

A. increase phagocytosis of sperm

B. suppress sperms motility

C. prevent ovulation

D. make uterus unsuitable for implantation

**Answer: B**



**Watch Video Solution**

**12.** in vitro fertilization is a technique that involves transfer of which one of the following into the fallopian tube?

A. either zygote or early embryo upto

8 – *cell* stage

B. embryo of 32 cell stage

C. Zygote only

D. embryo only, upto 8 cell stage.

**Answer: C**



**Watch Video Solution**

**13. LNG-20 is**

A. IUI

B. IUT

C. IUD

D. IFT

**Answer: C**



**Watch Video Solution**

**14.** Progestin- estradiol combined  
contraceptive pills inhibit ovulation by:

A. negative feedback on the release of  
estrogen, from ovary required for



follicular development in follicular phase.

B. preventing the uterine physiological and morphological changes required for implantation.

C. inhibiting the secretion of FSH and LH that are necessary for ovulation.

D. both (A) and (C)

**Answer: D**



**Watch Video Solution**

**15.** the technique called Gamete Intra Fallopiian Transfer (GIFT) is is recommended for those females

A. who cannot produce an ovum

B. who cannot retain the foetus inside uterus

C. whose cervical canal keys to narrow to allow passage for the sperms.

D. who cannot provide suitable environment for fertilization

**Answer: A**



**Watch Video Solution**

**16.** medical termination of pregnancy (MTP) is considered safe upto how many weeks of pregnancy?

A. Eighteen weeks

B. Six weeks

C. Eight weeks

D. Twelve weeks

**Answer: D**



**Watch Video Solution**

**17.** which one of the following is the most widely accepted method of contraception in India, as at present?

A. diaphragms

B. IUDs

C. cervical caps

D. tubectomy

**Answer: B**



**Watch Video Solution**

**18.** in assisted reproductive technology, after invitro fertilization which is transplanted in fallopian tube

A. Embryo upto 8 blastomeres, if zygote is not transplanted.

B. only zygote is transplanted

C. blastula is transplanted

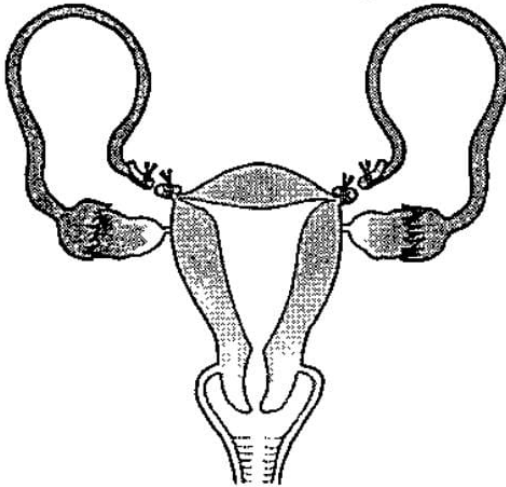
D. Morula in 8 – 24 celled stage is transplanted

**Answer: A**



**Watch Video Solution**

19. what does the following figure depict?



A. Uterine cancer

B. tubectomy

C. ovarian cancer

D. Vasectomy

**Answer: B**



**Watch Video Solution**

**20. test tube baby programme employs**

A. intracytoplasmic sperm injection

B. zygote intrafallopian transfer

C. intrauterine insemination

D. gamete intrafallopian transfer

**Answer: C**





Watch Video Solution

21. artificial insemination means

A. artificial introduction of sperms of a healthy donor into the vagina

B. introduction of sperm of a healthy donor directly into the ovary

C. transfer of sperms of a healthy donor to a test tube containing ovary

D. transfer of arms of husband to a test tube containing ova.

**Answer: D**



**Watch Video Solution**

**22.** which of the following cannot be detected in the developing foetus by amniocentesis?

A. down syndrome

B. jaundice

C. Klinefelter syndrome

D. sex of the foetus

**Answer: B**



**Watch Video Solution**

**23.** one of the legal method of birth control is

A. by having coitus at the time of day break

B. by a premature ejaculation during coitus

C. abortion by taking an appropriate  
medicine

D. by abstaining from coitus from day 10 to  
17 of menstrual cycle

**Answer: D**



**Watch Video Solution**

**24.** choose the correctly matched pair from the  
following

A. Gonorrhoea, hepatitis B - sexually transmitted disease.

B. AIDS, gonorrhoea - viral infection

C. Diphtheria, ringworm - fungal infection

D. diphtheria, tuberculosis- protozoan infection.

**Answer: A**



**Watch Video Solution**

25. Assisted reproductive technology IVF

involves transfer of

A. zygote into uterus

B. embryo with 16 blastomeres into the  
fallopian tube

C. ovum into the fallopian tube

D. zygote into the fallopian tube

**Answer: D**



**Watch Video Solution**

**26. fill in the blanks**

the optimal capacity of the organism to produce offsprings is called .....



**Watch Video Solution**

**27. fill in the blanks**

..... is the upper limit up to which environment can sustain population.



**Watch Video Solution**

**28.** fill in the blanks

instrument used for tubal ligation is .....



**Watch Video Solution**

**29.** fill in the blanks

rapid increase in human population is called

.....



**Watch Video Solution**



**30.** fill in the blanks

instrument used for tubal ligation is .....



**Watch Video Solution**

**31.** By aminocentesis the foetal sex determination test is banned in our country. Is it necessary ? Comment.



**Watch Video Solution**

**32.** fill in the blanks

carrying capacity of the Earth for human population is .....



**Watch Video Solution**

**33.** fill in the blanks

presently human population needs ..... years to double.



**Watch Video Solution**

**34.** What are the main reasons for population explosion ?



**Watch Video Solution**

**35.** Explain :

Surgical methods of birth control



**Watch Video Solution**

**36.** true or false

congenital chromosomal and metabolic defects in the foetus can be determined by amniocentesis.



**Watch Video Solution**

**37.** true or false

the excess of birth covid deaths in a year per 1000 individuals is called growth rate.



**Watch Video Solution**

**38.** true or false

first test tube baby was born to Mrs. Louise Joy Brown of England.



**Watch Video Solution**

**39.** true or false

the best way to decrease population of a country is to kill people on a large scale.



**Watch Video Solution**

**40.** true or false

complete count of individual in an area is called population.



**Watch Video Solution**

**41.** true or false

main cause of disease are genetic disorder, infections and life style.



**Watch Video Solution**

**42.** true or false

hepatitis-B genital herpes and HIV are STDs,  
only HIV is incurable.



**Watch Video Solution**

**43.** true or false

test tube baby technique involves artificial  
insemination.



**Watch Video Solution**

**44.** true or false

in India, medical termination of pregnancy (i.e. abortion) was legalised in 1999.



**Watch Video Solution**

**45.** true or false

abortions could happen spontaneously too.



**Watch Video Solution**

**46.** What is surrogate mother ?





**Watch Video Solution**

**47.** What is demography ?



**Watch Video Solution**

**48.** Suggest the aspects of reproductive health which need to be given special attention to the present scenerio.



**Watch Video Solution**

**49.** Is sex education necessary in schools?

Why?



**Watch Video Solution**

**50.** What are measures one has to take to prevent from contracting STDs?



**Watch Video Solution**

**51.** Expand the term GIFT.





[Watch Video Solution](#)

**52.** Differentiate natality rate and mortality rate.



[Watch Video Solution](#)

**53.** Briefly give an account of various intrauterine contraceptive measures.



[Watch Video Solution](#)

54. Name some ARTs which have decreased the number of cases of of infertile couples.



[Watch Video Solution](#)

55. By aminocentesis the foetal sex determination test is banned in our country. Is it necessary ? Comment.



[Watch Video Solution](#)

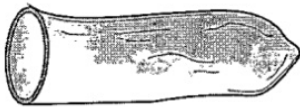
56. Expand MTP. Which time period of pregnancy is considered safe to perform MTP?

What is its importance?



[Watch Video Solution](#)

57. Identify the figure-1 and figure- 2.



(1)

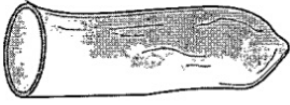


(2)



[Watch Video Solution](#)

58. Mention the role of figure-1 and figure-2.



(1)

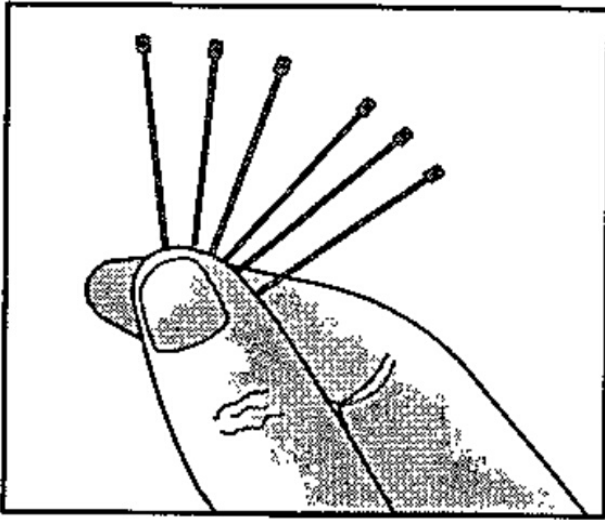


(2)



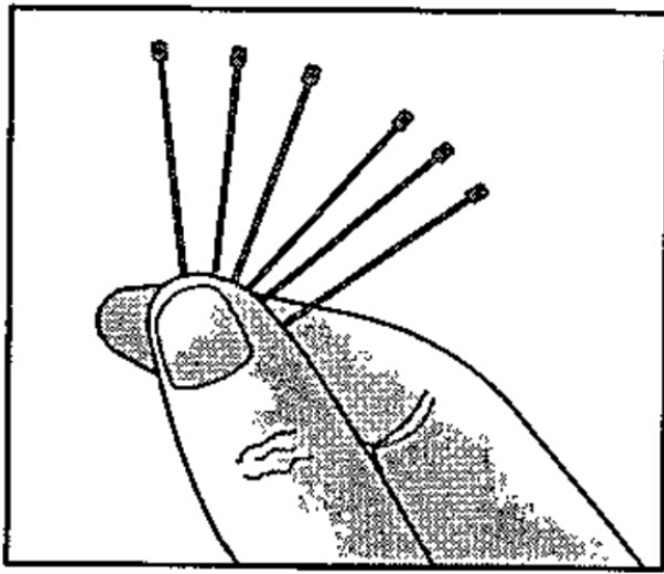
**Watch Video Solution**

59. What does the above figure depict?



[Watch Video Solution](#)

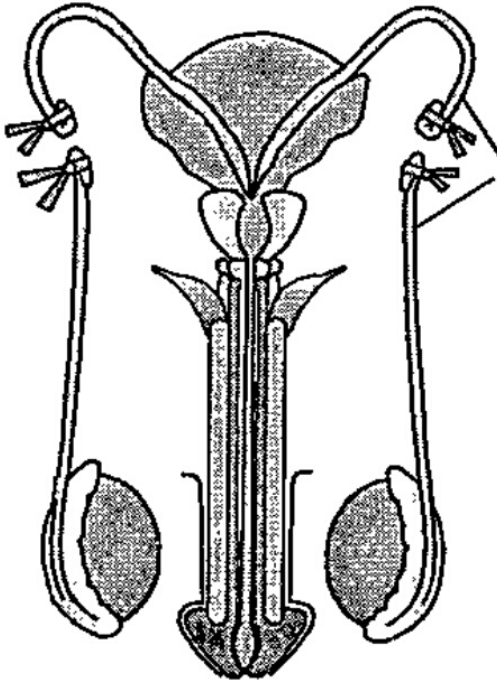
60. How long it remains effective for contraception?



**Watch Video Solution**

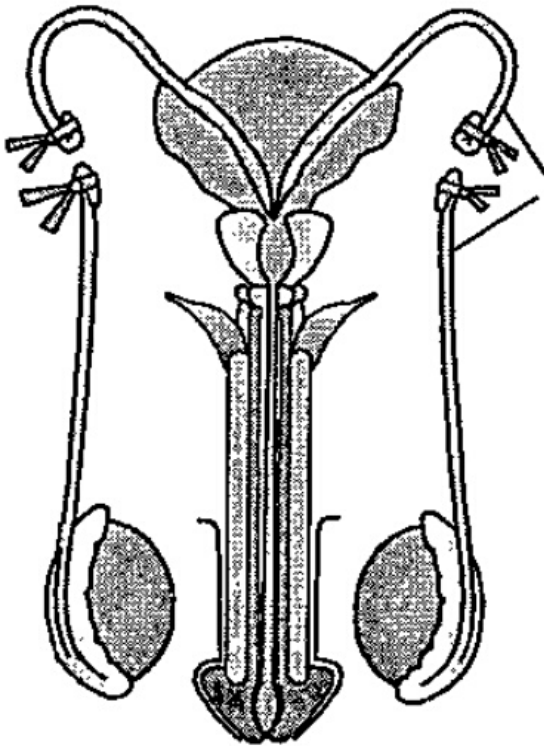


61. What does the above figure depict?



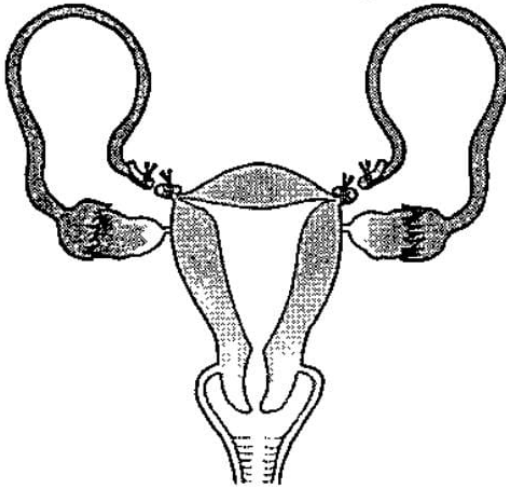
[Watch Video Solution](#)

62. Which structure is removed in this technique?



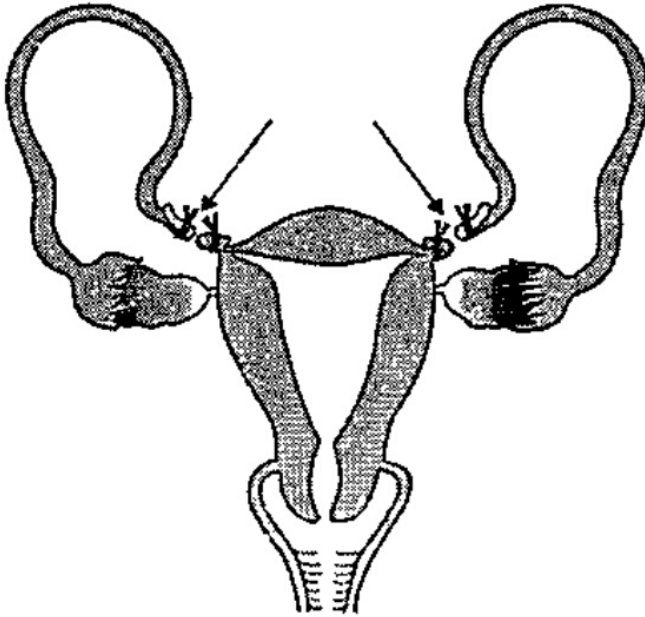
**Watch Video Solution**

63. what does the following figure depict?



[Watch Video Solution](#)

64. Which structure is removed in this figure?



**Watch Video Solution**