



BIOLOGY

BOOKS - JMD BIOLOGY (PUNJABI ENGLISH)

Strategies for Enhancement in Food Production

Exercise

1. Why is animal husbandry essential?



Watch Video Solution

2. Which part of the plant is best suited for making virus free plants and why?



Watch Video Solution

3. Explain Inbreeding depression.



Watch Video Solution

4. Explain the following term in not more than 70 words :

Single cell proteins.



[Watch Video Solution](#)

5. Breeding of crops to increase its nutritional value is called:

A. Biofortification

B. Totipotency

C. Embryo culture

D. Plantlet culture

Answer: A



Watch Video Solution

6. What is apiculture? How is it important in our lives?



Watch Video Solution

7. Identify the breed of bird in the given figure.



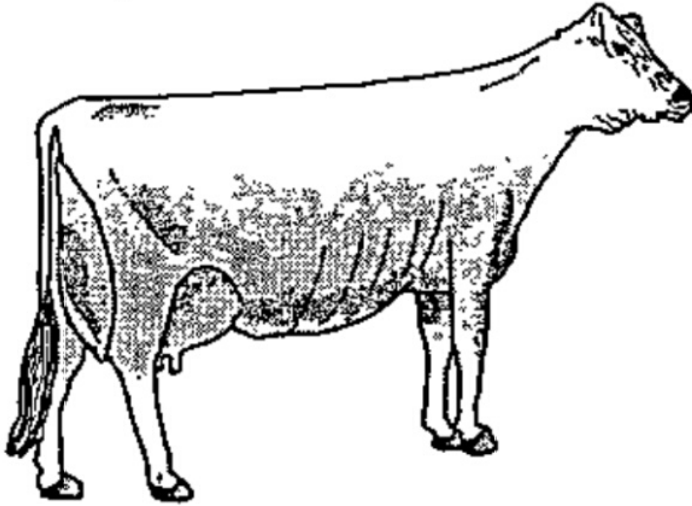
Watch Video Solution

8. Give one or two importance(s) of this breed.



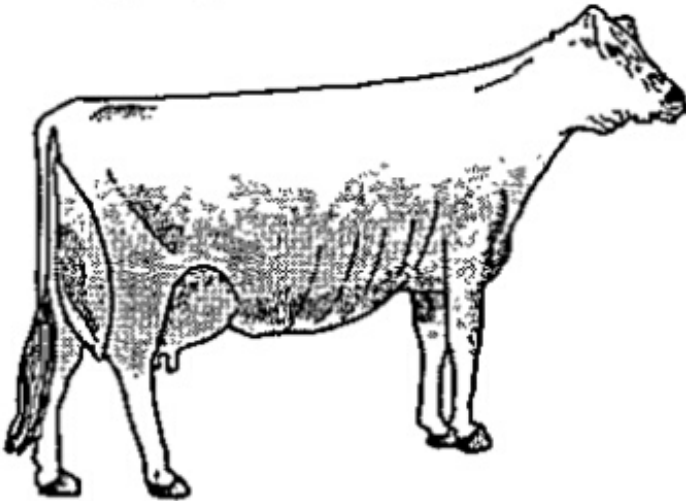
Watch Video Solution

9. Identify the breed of cow in the following figure.



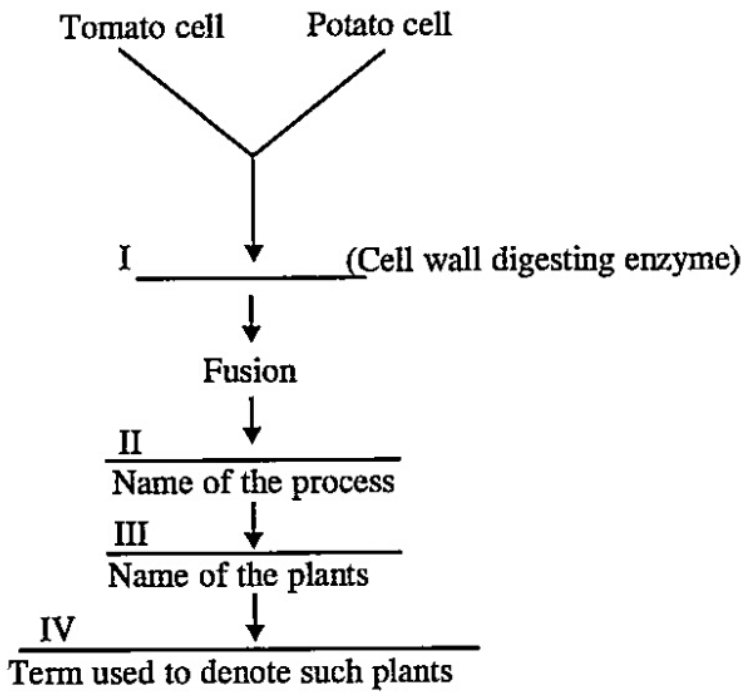
Watch Video Solution

10. Mention importances of this breed.



[Watch Video Solution](#)

11. Fill in the blanks *I,II,III* and *IV* respectively in the given flow chart.



[Watch Video Solution](#)