



BIOLOGY

BOOKS - MTG BIOLOGY (ENGLISH)

REPRODUCTIVE HEALTH

Mcqs

1. Family planning programme was initiated in

- A. 1920
- B. 1930
- C. 1950
- D. 1951

Answer: D



Watch Video Solution

2. RCH stands for

- A. Routine Check-up of Health
- B. Reproduction Cum Hygiene
- C. Reversible Contraceptive Hazards
- D. Reproductive and Child Health Care

Answer: D



Watch Video Solution

3. Reproductive health in society can be improved by

- (i) Introduction of sex education in schools
- (ii) Increased medical assistance
- (iii) Awareness about contraception and STDs

(iv) Equal opportunities to male and female child

(v) Encouraging myths and misconceptions

A. (i),(ii),(iii),(iv),(v)

B. (i),(ii),(iv),(v)

C. (i),(ii),(iii),(iv)

D. (ii),(v)

Answer: C



Watch Video Solution

4. Which of the following statements are correct ?

(i) Family planning programmes were initiated in 1951

(ii) According to WHO, reproductive health means total well being in the physical, social, behavioural and emotional aspects of reproduction

(iii) Saheli was developed at CDRI in Lucknow

(iv) Amniocentesis should not be banned as it is a foetal sex determination test.

- A. (i) and (ii) only
- B. (ii) and (iii) only
- C. (i),(ii) and (iii)
- D. (iii) and (iv) only

Answer: C



Watch Video Solution

5. Aminocentesis is a technique used to

- A. determine errors in amino acid metabolism in embryo
- B. pin point specific cardiac ailments in embryo
- C. determine any hereditary genetic abnormality in embryo
- D. all of these

Answer: C



Watch Video Solution

6. Read the given statements and select the correct option

Statement 1 : Amnicentesis is often misused

Statement 2 : Amniocentesis is being used to determine the sex of the foetus so that female foetus may be aborted.

- A. Both statement 1 and 2 are correct
- B. Statement 1 is correct but statement 2 is incorrect
- C. Statement 1 is incorrect but statement 2 is correct
- D. Both statement 1 and 2 are incorrect

Answer: A



Watch Video Solution

7. Which of the following statements is/are correct ?

- A. Amniocentesis and CVS (chorionic villi sampling) are the techniques of detection of foetal disorders during early pregnancy
- B. Reproduction health refers to healthy reproductive organs with normal functions
- C. India was amongst the first countries in the world to initiate action plans and programmes at a national level to attain total reproductive health
- D. all of these

Answer: D



View Text Solution

8. Which of the following cannot be detected in a developing foetus by amniocentesis ?

- A. Jaundice
- B. Down's syndrome
- C. Systick fibrosis
- D. Colourblindness

Answer: A



Watch Video Solution

9. In which of the following weeks of pregnancy CVS is done ?

- A. $12^{th} - 14^{th}$ week
- B. $8^{th} - 10^{th}$ week
- C. $5^{th} - 7^{th}$ week
- D. None of these

Answer: B



Watch Video Solution

10. Read the given statements and select the correct option

Statement 1 : The world population was around 2 billions in 1900 which has rocketed to about 6 billions by 2000

Statement 2 : Increase in longevity due to decline in death rate , maternal mortality rate and infant mortality rate has been some major causes of population explosion.

- A. Both statement 1 and 2 are correct
- B. Statement 1 is correct but statement 2 is incorrect
- C. Statement 1 is incorrect but statement 2 is correct
- D. Both statement 1 and 2 are incorrect

Answer: A



Watch Video Solution

11. Causes for increased population growth in India is/are

- A. increase in birth rate
- B. decrease in death rate
- C. lack of education
- D. all of these

Answer: D



Watch Video Solution

12. Which of the following are the reasons for population explosion ?

- (i) Increased health facilities
- (ii) Rapid increase in MMR
- (iii) Rapid increase in IMR
- (iv) Rapid decrease in MMR
- (v) Decrease in number of people reaching reproductive age

- A. (i) and (iv)
- B. (iii) and (v)

C. (ii) and (iii)

D. (i) and (v)

Answer: A



Watch Video Solution

13. Which of the following pairs contributes to an increase in population ?

A. Natality and immigration

B. Mortality and emigration

C. Natality and emigration

D. Mortality and immigration

Answer: A



Watch Video Solution

14. Certain characteristic demographic features of developing countries are

- A. high fertility, high density, rapidly rising mortality rate and a very young age distribution
- B. high infant mortality rate, low fertility, uneven population growth and a very young age distribution
- C. high mortality, high density, uneven population growth and a very old age distribution
- D. high fertility, low or rapidly falling mortality rate, rapid population growth and a very young age distribution.

Answer: D



Watch Video Solution

15. Which of the following is correct regarding the consequences of over population ?

- A. It increases the poverty of a country
- B. It leads to shortage of food supply
- C. It results in unempolyment
- D. all of these

Answer: D



Watch Video Solution

16. Carrying capacity is

- A. maximum number of individuals which an environment can sustain
- B. minimum number of individuals which an enviornment can sustain
- C. both (a) and (b)
- D. None of these

Answer: A



Watch Video Solution

17. Read the given statements and select the correct option

Statement 1 : Physiological capacity of organisms to produce off spring under natural conditions is called as reproductive potential

Statement 2 : Minimum number of individuals which an environment can sustain is referred to as its carrying capacity

- A. Both statement 1 and 2 are correct
- B. Statement 1 is correct but statement 2 is incorrect
- C. Statement 1 is incorrect but statement 2 is correct
- D. Both statement 1 and 2 are incorrect

Answer: B



Watch Video Solution

18. The best way to decrease population of a country is

- A. to educate people
- B. to have better houses
- C. to kill people on larger scale
- D. to practice and implement family planning

Answer: D



Watch Video Solution

19. Which of the following correctly describes the measures that can be used to control over-population ?

- A. Educating people about the advantages of a small family
- B. Raising the age of marriage
- C. Encouraging family planning programme
- D. all of these

Answer: D



Watch Video Solution

20. Which of the following is not a characteristic of an ideal contraceptive ?

- A. User - friendly
- B. Irreversible
- C. Easily available
- D. Least side-effects

Answer: B



Watch Video Solution

21. Fill up the blanks in the following paragraph by selecting the correct option

- A. i methods work on the principle of avoiding chances of ovum and sperms meeting
- B. ii is one such method in which the couples avoid coitus from day 10 to 17 of the menstrual cycle
- C. iii is another method in which the male partner withdraws his penis from the vagina just before ejaculation so as to avoid insemination
- D. iv method is based on the fact that ovulation and therefore the cycle do not occur during the period of intense loctation following parturition.

A.

- | | | | |
|---------|--------------------|---------------------|------------------------|
| (i) | (ii) | (iii) | (iv) |
| Barrier | Coitus interruptus | Periodic abstinence | Lactational amenorrhea |

B.

- | | | | |
|------|------------------------|--------------------|---------------------|
| (i) | (ii) | (iii) | (iv) |
| IUDs | Lactational amenorrhea | Coitus interruptus | Periodic abstinence |

C.

- | | | | |
|---------|---------------------|--------------------|------------------------|
| (i) | (ii) | (iii) | (iv) |
| Natural | Periodic abstinence | Coitus interruptus | Lactational amenorrhea |

D.

- | | | | |
|----------|---------------------|--------------------|------------------------|
| (i) | (ii) | (iii) | (iv) |
| Surgical | Periodic abstinence | Coitus interruptus | Lactational amenorrhea |

Answer: C



Watch Video Solution

22. On which of the following facts does the method of periodic abstinence is based ?

- A. Ovulation occurs on about the 14th day of menstruation
- B. Ovum remains alive for about 1-2 days
- C. Sperms survive for about 3 days
- D. all of these

Answer: D



Watch Video Solution

23. What is true for lactational amenorrhea ?

- (i) It means absence of menstruation

- (ii) Ovulation does not occur during the lactational period
- (iii) Chances of contraception are almost nil upto six months following parturition
- (iv) Side effects are almost nil
- (v) Contraceptive efficiency reduces after the period of intense lactation
- (vi) It is natural method of contraception
- (vii) It increases phagocytosis of sperms

- A. (ii),(iii),(iv),(v) and (vi)
- B. (i),(ii),(iii) and (iv)
- C. (ii),(iii),(iv),(v) and (vii)
- D. (i),(ii),(iii),(iv),(v) and (vi)

Answer: D



Watch Video Solution

24. Read the given statements and select the correct option

Statement 1 : Diaphragms, cervical caps and vaults are made of rubber

and are inserted into the female reproductive tract to cover the cervix before coitus

Statement 2 : These are chemical barrier of conception which are reusable

- A. Both statement 1 and 2 are correct
- B. Statement 1 is correct but statement 2 is incorrect
- C. Statement 1 is incorrect but statement 2 is correct
- D. Both statement 1 and 2 are incorrect

Answer: B



Watch Video Solution

25. Which of the following is a non-medicated intrauterine device (IUD) ?

- A. CuT
- B. Lippes Loop
- C. Cu7

D. LNG-20

Answer: B



Watch Video Solution

26. Multiload device contains

A. manganese

B. iron

C. copper

D. calcium

Answer: C



Watch Video Solution

27. Which of the following is not an intrauterine device ?

A. Progestasert

B. Multiload-375

C. Norplant

D. Lippes loop

Answer: C



Watch Video Solution

28. What is the work of copper-T ?

A. To inhibit ovulation

B. To inhibit fertilisation

C. To inhibit implantation of blastocyst

D. To inhibit gametogenesis

Answer: B



Watch Video Solution

29. IUDs prevent pregnancy by

- A. inhibiting physiological and morphological uterine changes required for implantation
- B. increasing phagocytosis of spermatozoa within uterus
- C. suppressing motility of sperms as well as their fertilising capacity
- D. all of these

Answer: D



Watch Video Solution

30. CuT is an intrauterine contraceptive device. Select the option that correctly defines the role of Cu

- A. Cu ions make uterus unsuitable for implantation

- B. Cu ions suppress sperm motility and the fertilising capacity of the sperms
- C. Cu ions make cervix hostile to sperms
- D. all of these

Answer: B



Watch Video Solution

31. Read the given statements and select the correct option

Statement 1 : CuT,Cu7 and multiload 375 are the hormone releasing IUDs

Statement 2 : Cu ions released by some IUDs affect the ability of uterine wall to support embryo thus cause contraception.

- A. Both statement 1 and 2 are correct
- B. Statement 1 is correct but statement 2 is incorrect
- C. Statement 1 is incorrect but statement 2 is correct
- D. Both statement 1 and 2 are incorrect

Answer: D



Watch Video Solution

32. Cu ions released from copper releasing intrauterine devices (IUDs)

- A. prevent ovulation
- B. make uterus unsuitable for implantation
- C. decrease phagocytosis of sperms
- D. suppress sperm motility

Answer: D



Watch Video Solution

33. Select the correct statement regarding IUDs out of the following

- A. Intrauterine devices (IUDs) are objects which are inserted in the uterus of the female through vagina by expert doctors
- B. IUDs may be categorised as non-mendicated IUDs (e.g., lippes loop), copper releasing IUDs (e.g., CuT, Cu7, Multiload 375) and hormone releasing IUDs (e.g., progestasert, LNG-20)
- C. In india, use of IUDs is one of the most widely accepted methods of contraception these days
- D. all of these

Answer: D



Watch Video Solution

34. The birth control device used by women is

- A. diaphragm
- B. vault

C. copper T

D. all of these

Answer: D



Watch Video Solution

35. Main disadvantages of intrauterine contraceptive devices is that

A. the devices are permanently placed in uterus and cannot be removed even if couple want to have children

B. the device has to be inserted by physician in the uterus through vagina

C. the devices are expelled out without the knowledge of the wearers

D. both (a) and (c)

Answer: C



Watch Video Solution

36. Which of the following are the drawbacks of the IUDs ?

- (i) Their spontaneous expulsion, even without the woman's knowledge
- (ii) They can cause excess mensutrual bleeding and pain
- (iii) Risk of infection
- (iv) They increase the phagocytosis of sperms
- (vi) They suppress sperm motility.

A. (i),(iii) and (vi)

B. (i),(ii),(iv) and (vi)

C. (i),(ii),(iii) and (v)

D. (i),(ii),(iii) and (iv)

Answer: D



Watch Video Solution

37. The most important component of oral contraceptive pills is

A. progesterone-estrogen

B. growth hormone

C. thyroxine

D. luteinising hormone

Answer: A



Watch Video Solution

38. Progestin-estradiol combined contraceptive pills inhibit ovulation by

A. negative feedback on the release of estrogen from ovary required

for follicular development in follicular phase

B. Preventing the uterine physiological and morphological changes

required for implantation

C. inhibiting the secretion of follicle stimulating hormone (FSH) and

luteinising hormone (LH) that are necessary for ovulation

D. both (a) and (c)

Answer: C



Watch Video Solution

39. Progesterone pill helps in preventing pregnancy by allowing

A. ova formation

B. fertilisation

C. implantation

D. None of these

Answer: A



Watch Video Solution

40. How do the pills work ?

- (i) Inhibit ovulation and implantation
- (ii) Alter the quality of cervical mucus to prevent or retard the entry of sperms
- (iii) Inhibit spermatogenesis

A. (i),(ii) and (iii)

B. (i) and (ii)

C. (ii) only

D. (iii) only

Answer: B



Watch Video Solution

41. Read the given statement and select the correct option

Statement 1 : Saheli is an pill which has high contraceptive value and very little side effects

Statement 2 : Saheli contains progestin with no estrogen, and a non-steroidal preparation called centchroman.

- A. Both statement 1 and 2 are correct
- B. Statement 1 is correct but statement 2 is incorrect
- C. Statement 1 is incorrect but statement 2 is correct
- D. Both statements 1 and 2 are incorrect

Answer: A



Watch Video Solution

42. What is true about "Saheli" ?

- (i) Developed at the CDRI, Lucknow
- (ii) Contains a steroidal preparation
- (iii) "Once-a-week" pill
- (iv) Many side effects
- (v) High contraceptive value

(vi) Very few side effects

(vii) Low contraceptive value

A. (i),(ii),(iii),(v),(vi)

B. (i),(iii),(v),(vi)

C. (i),(ii),(iii),(iv),(v)

D. (i),(iii),(iv),(v)

Answer: B

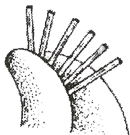


Watch Video Solution

43. Identify the figures of the contraceptives given below and select the correct option



A



B



C



D

A. A
Condom

B. B
Implant

C. C
CuT

D. D
Condom for male

	A	B	C	D
B.	Implant	CuT	Condom for female	Condom for male
	A	B	C	D
C.	Condom for male	CuT	Implant	Condom for female
	A	B	C	D
D.	Condom for male	Implant	CuT	Condom for female

Answer: D



Watch Video Solution

44. Which of the following contraceptives are implanted under the skin ?

(a)



A.

(b)

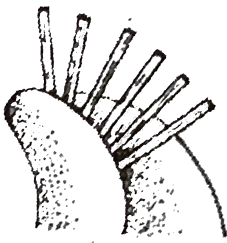
B.



(c)

C.





D.

Answer: D



Watch Video Solution

45. Select the correct statement regarding subcutaneous implantation of synthetic progesterone

- A. It is a contraception technique
- B. Its acts by blocking ovulation and prevents sperm transport
- C. Six match-stick sized capsules containing the progestogen steroid are inserted under the skin of the inner arm above the elbow
- D. all of these

Answer: D



[Watch Video Solution](#)

46. Read of following statements and select the correct option

Statement 1 : Subcutaneous implantation of synthetic progesterone prevents pregnancy for about 5 years

Statement 2 : A tiny amount of progesterone is steadily released from the inserts into the blood.

- A. Both statement 1 and 2 are correct
- B. Statement 1 is correct but statement 2 is incorrect
- C. Statement 1 is incorrect but statement 2 is correct
- D. Bothe statements 1 and 2 are incorrect

Answer: A



[Watch Video Solution](#)

47. Consider the following statement and select the option stating which ones are true (T) and which ones are false (F)

- (i) Emigration is the movement of individuals out of a place or country
- (ii) Combined contraceptive pills contain synthetic progesterone and estrogen to check ovulation
- (iii) Depo-Provera are estrogen derivative injections
- (iv) The scientific study of human population is called demography.

- | | | | | |
|----|-----|------|-------|------|
| | (i) | (ii) | (iii) | (iv) |
| A. | T | T | F | T |
| | (i) | (ii) | (iii) | (iv) |
| B. | T | F | T | F |
| | (i) | (ii) | (iii) | (iv) |
| C. | T | F | F | T |
| | (i) | (ii) | (iii) | (iv) |
| D. | T | F | T | T |

Answer: A



Watch Video Solution

48. Read the following statements and select the option having both incorrect statements

- (i) Condoms decrease sperm motility
- (ii) Diaphragms, cervical caps and vaults are for both males and females
- (iii) IUDs are inserted by expert nurses
- (iv) Sterilisation is a terminal method to prevent further pregnancy.

A. (i) and (iii)

B. (i) and (ii)

C. (iii) nad (iv)

D. (ii) and (iv)

Answer: B



Watch Video Solution

49. Given below are four methods (A-D) and their modes of action (i-iv) in achieving contraception. Select their correct matching from the four

options that follow

Method	Mode of Action
A. Oral pill	(i) Prevents sperms reaching cervix
B. Condom	(ii) Suppresses sperm motility
C. Vasectomy	(iii) Prevents ovulation
D. Copper T	(iv) Semen contain no sperms

A. A-(iii),B-(iv),C-(i),D-(ii)

B. A-(ii),B-(iii),C-(i),D-(iv)

C. A-(iii),B-(i),C-(iv),D-(ii)

D. A-(iv),B-(i),C-(ii),D-(iii)

Answer: C



Watch Video Solution

50. Match the contraceptive methods given under column I with their examples given under column II and select the correct option from the

given codes

Column I		Column II
A. Chemical	(i)	Tubectomy and vasectomy
B. IUDs	(ii)	Copper T and loop
C. Barriers	(iii)	Condom and cervical cap
D. Sterilisation	(iv)	Spermicidal jelly and foam
	(v)	Coitus interruptus and calender method

A. A-(iv),B-(ii),C-(iii),D-(i)

B. A-(iv),B-(v),C-(ii),D-(iii)

C. A-(i),B-(iii),C-(ii),D-(v)

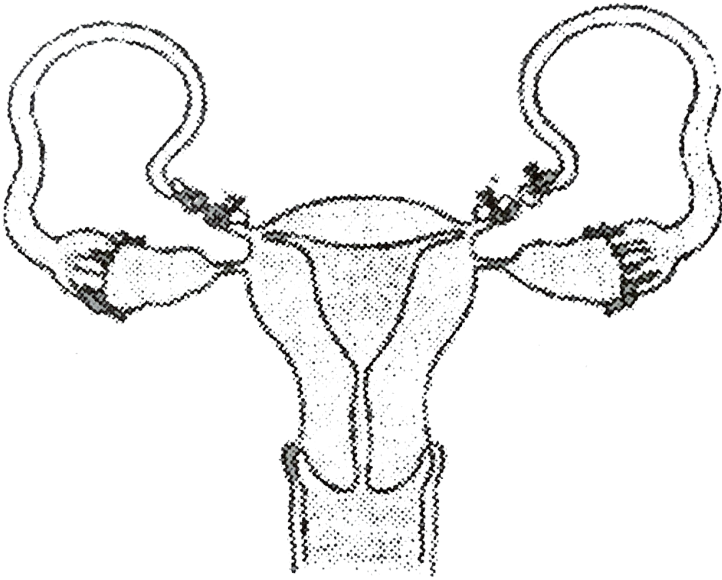
D. A-(iv),B-(ii),C-(v),D-(i)

Answer: A



Watch Video Solution

51. What is the figure given below showing in particular ?



A. Ovarian cancer

B. Uterine cancer

C. Tubectomy

D. Vasectomy

Answer: C



Watch Video Solution

52. Which of the following contraceptive methods correctly matches with its mode of action ?

A.

Contraceptive method

Mode of action

Tubectomy

Makes the uterus unsuitable for implantation

B.

Contraceptive method

Mode of action

Oral pills

Inhibit ovulation and implantation

C.

Contraceptive method

Mode of action

Diaphragms

Spermicidal action increases phagocytosis of sperm

D.

Contraceptive method

Mode of action

IUDs

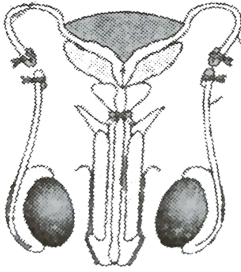
Blocks gamete transport

Answer: B

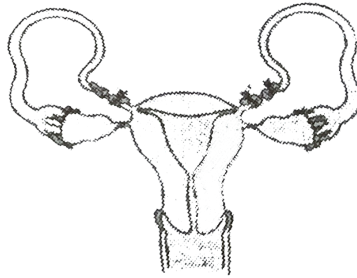


Watch Video Solution

53. Which of the following figures shows tubectomy ?



A



B

- A. A only
- B. B only
- C. Either A or B
- D. None of these

Answer: B



Watch Video Solution

54. Match column I with column II and select the correct option from the given codes

Column I		Column II
A. Natural methods	(i)	Coitus interruptus
B. IUDs	(ii)	LNG - 20
C. Barrier methods	(iii)	Diaphragms
D. Surgical methods	(iv)	Multiolod 375
E. Oral contraceptives	(v)	Saheli
	(vi)	Nirodh
	(vii)	Sterilisation
	(viii)	Vasectomy
	(ix)	CuT

A. A-(i),B-(ii) , (iv) , (ix), C-(iii) , (vi),D-(vii) , (viii),E-(v)

B. A-(i),B-(ii) , (iv), C-(iii) , (vi) , (ix), D-(vii) , (viii),E-(v)

C. A-(i),B-(ii) , (iv) , C-(iii) , (ix),D-(vii), (viii), E-(v) , (vi)

D. A-(i), B-(iv) , (ix), C-(ii) , (iii) , (vi),D-(vii), (viii),E-(v)

Answer: A



Watch Video Solution

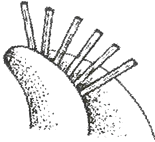
55. Which of the following contraceptive methods has poor reversibility ?

(a)



A.

(b)



B.

(c)



C.

(d)



D.

Answer: C



Watch Video Solution

56. Which of the following statements are correct regarding surgical methods of contraception ?

(i) These are generally advised to the male/female partner as a terminal

method to prevent any more pregnancies

(ii) Surgical procedure in male is called tubectomy and that in the female, vasectomy

(iii) Reversibility is easily possible

(iv) They block gamete transport and thereby prevent conception.

A. (ii) and (iii)

B. (i),(ii) and (iii)

C. (i) and (iv)

D. (ii) and (iv)

Answer: C



Watch Video Solution

57. Which of the following birth control measures can be considered as the safest ?

A. The rhythm method

B. The use of physical barriers

C. contraceptive pills

D. Sterilisation techniques

Answer: D



Watch Video Solution

58. Which of the following is the most widely accepted method of contraception in india at present ?

A. Cervial caps

B. Tubectomy

C. Diaphragms

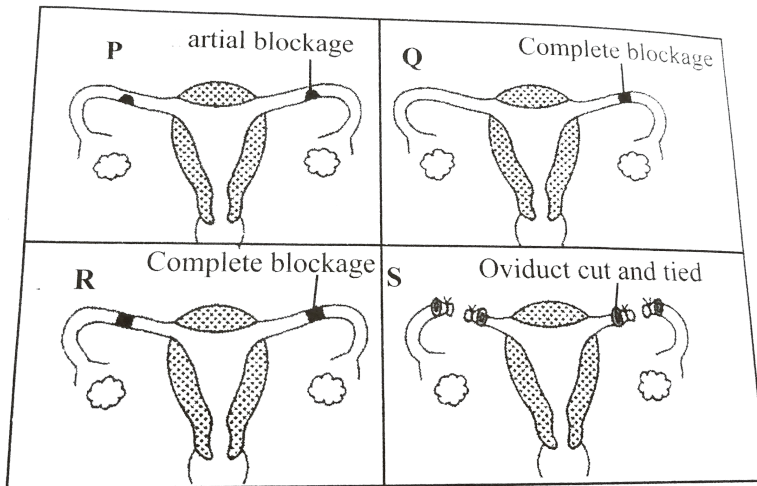
D. IUDs (Intra uterine devices)

Answer: D



Watch Video Solution

59. The accompanying diagram shows the uterine tubes of four women (P,Q,R and S)



In which two women is fertilisation impossible at present ?

- A. P and Q
- B. Q and R
- C. R and S
- D. S and P

Answer: C



Watch Video Solution

60. Which of the following is full proof method of contraception ?

- A. Implantation
- B. Lactational amenorhea
- C. Condoms
- D. Sterilisation

Answer: D



Watch Video Solution

61. Which of the following statements is correct regarding vasectomy ?

- A. It prevents the production of sperms in the tests
- B. It prevents the production of semen
- C. It prevents the movement of sperms into the urethra

D. It prevents a man from having an erection

Answer: C



Watch Video Solution

62. Consider the following statements each one or two blanks

(A) Lippes loops is a i while multiload 375 is a ii IUD

(B) Surgical methods of contraception are also called as iii methods

(C) High MMR and IMR play a significant role in iv human population

Which one of the following options, gives the correct fill ups for the respective blank numbers from (i) to (iv) in the above statements ?

A. (i) copper releasing, (ii) non-medicated (iv) decreasing

B. (iii) barrier, (iv) increasing

C. (i) non-medicated, (ii) copper releasing (iv) decreasing

D. (i) copper releasing (ii) non-medicated, (iii) sterilisation

Answer: C



63. Select the option which correctly fills up the blanks in the following statements

(i) Destruction of embryo or foetus in the uterus is called _____

(ii) Government of India legalised MTP in the year _____

(iii) Natural family planning method is also called _____

(iv) _____ is a method in which the male partner withdraws his penis from vagina just before ejaculation

(v) _____ is a copper releasing and _____ is a hormone releasing intra uterine devices.

A. (i) foeticide (ii) 1961, (iii) rhythm method, (iv) safety period, (v)

Saheli, LNG-20

B. (i) foeticide, (ii) 1971, (iii) rhythm method, (iv) coitus interruptus, (v)

Multiload 375, LNG-20

C. (i) foeticide, (ii) 1965, (iii) rhythm method, (iv) coitus interruptus, (v)

Multiload 375 , CuT

D. (i) matricide, (ii) 1982, (iii) contraception method, (iv) coitus interruptus, (v) Progestasert, LNG-20

Answer: B



Watch Video Solution

64. Which of the following statements is incorrect regarding the medical termination of pregnancy (MTP) ?

A. These help in getting rid of unwanted pregnancies

B. These help in aborting the pregnancies which may be harmful to either mother or foetus or both

C. These contribute in decreasing the human population

D. None of these

Answer: D



Watch Video Solution

65. Which of the following two statements are correct ?

- (i) Medical termination of pregnancy (MTP) during first trimester is generally safe
- (ii) Generally chances of conception are nil until mother breast-feeds the infant upto two years
- (iii) Intrauterine devices like copper-T are effective contraceptives
- (iv) Contraception pills may be taken upto one week after coutus to prevent conception.

- A. (i) and (iii)
- B. (i) and (ii)
- C. (ii) and (iii)
- D. (iii) and (iv)

Answer: A



Watch Video Solution

66. Read the given statements and select the correct option

Statement 1 : MTP is considered relatively safe during the first trimester of pregnancy

Statement 2 : Foetus becomes intimately associated with the maternal tissues after the first trimester.

- A. Both statement 1 and 2 are correct
- B. Statement 1 is correct but statement 2 is incorrect
- C. Statement 1 is incorrect but statement 2 is correct
- D. Both statement 1 and 2 are incorrect

Answer: A



Watch Video Solution

67. Which of the following represents the correct match of a sexually transmitted infection with its pathogen ?

- A. Syphilis - *Treponema pallidum*
- B. Gonorrhoea - *Entamoeba histolytica*
- C. Urethritis - *Bacillus anthracis*
- D. Softsore - *Bacillus brevis*

Answer: A



Watch Video Solution

68. The sexually transmitted infection, that can affect both the male and female genitals and may damage the eyes of babies born of infected mothers is

- A. AIDS
- B. syphilis

C. gonorrhoea

D. hepatitis

Answer: C



Watch Video Solution

69. A sexually transmitted disease symptomised by the development of chancre on the genitals is caused by the infection of

A. *Treponema pallidum*

B. *Neisseria gonorrhoeae*

C. human immunodeficiency virus

D. hepatitis B virus

Answer: A



Watch Video Solution

70. Which of the following is correct regarding HIV, hepatitis B, gonorrhoea, trichomoniasis ?

- A. Trichomoniasis is an STD whereas others are not
- B. Gonorrhoea is a viral disease whereas others are bacterial
- C. HIV is a pathogen whereas others are diseases
- D. Hepatitis B is eradicated completely whereas others are not.

Answer: C



Watch Video Solution

71. Given below are three statements (A-C) each with one or two blanks.

Select the option which correctly fills up the blanks in any two statements

- A. Diseases or infections which are transmitted through sexual intercourse are collectively called i diseases
- B. Genital herpes is ii disease
- C. Sterilisation in males is iii while in females is iv

A. A-(i) venereal , B-(ii) incurable

B. A-(i) venereal , B-(ii) curable

C. A-(i) non-communicable , C-(iii) tubectomy, (iv) vasectomy

D. B-(ii) bacterial , C-(iii) tubectomy, (iv) vasectomy

Answer: A



Watch Video Solution

72. Consider the following statements and select the option stating which ones are true (T) and which ones are false (F)

(i) There are many side effects of tubectomy and vasectomy

(ii) Purpose of tubectomy is to prevent egg formation

(iii) Contraceptive oral pills help in birth control by preventing ovulation

(iv) Genital warts is a sexually transmitted disease caused by herpes virus

(v) In India, there is rapid decline in infant mortality rate and MMR.

A.	(i)	(ii)	(iii)	(iv)	(v)
	T	F	T	F	F

- B. (i) (ii) (iii) (iv) (v)
F F F T T
- C. (i) (ii) (iii) (iv) (v)
T T T F F
- D. (i) (ii) (iii) (iv) (v)
F F T F T

Answer: D



Watch Video Solution

73. Match column I with column II and select the correct option from the given codes

Column I		Column II	
A. Syphilis	(i)	Human papiloma virus	
B. Chancroid	(ii)	Haemophilus ducreyi	
C. AIDS	(iii)	Treponema pallidum	
D. Genital warts	(iv)	HIV	

- A. A B C D
(iii) (ii) (iv) (i)
- B. A B C D
(ii) (i) (iii) (iv)
- C. A B C D
(iv) (ii) (i) (iii)
- D. A B C D
(i) (iv) (iii) (ii)

Answer: A



Watch Video Solution

74. Given below is a list of few sexually transmitted infections. Identify the diseases caused by bacteria among these

- (i) Gonorrhoea
- (ii) Giardiasis
- (iii) Trichomoniasis
- (iv) Chancroid
- (v) Syphilis

A. (i) and (ii)

B. (i),(iv) and (v)

C. (iii) and (v)

D. (ii), (iii) and (iv)

Answer: B



[Watch Video Solution](#)

75. It is disease which mainly affects mucous membrane of urinogental tract. In males, burning feeling on passing urine, a yellow discharge accompanied by fever, headache and feeling of illness occurs. Its name is

- A. phenylketonuria
- B. gonorrhoea
- C. AIDS
- D. None of these

Answer: B



[Watch Video Solution](#)

76. Which one of the following groups includes sexually transmitted infections caused by bacteria only ?

- A. Syphilis, gonorrhoea, chancroid

B. Syphilis, chlamydia, chancroid

C. Syphilis, gonorrhoea, scabies

D. Syphilis, scabies, pediculosis

Answer: A



Watch Video Solution

77. Confirmatory test for STIs is

A. ELISA

B. PCR

C. DNA hybridisation

D. all of these

Answer: D



Watch Video Solution

78. Hypatitis B is transmitted through

- A. blood transfusion
- B. intimate physical contact
- C. sexual contact
- D. all of these

Answer: D



Watch Video Solution

79. The common means of transmission of AIDS is

- A. sexual intercourse
- B. blood transfusion
- C. placental tranfer
- D. all of these

Answer: D



Watch Video Solution

80. Which of the following STIs are not completely curable ?

- A. Chlamydiasis, gonorrhoea, trichomoniasis
- B. Chancroid, syphilis, genital warts
- C. AIDS, syphilis, hepatitis B
- D. AIDS, genital herpes, hepatitis B

Answer: D



Watch Video Solution

81. To avoid transmission of STIs we should

- (i) Avoid sex with multiple partners
- (ii) Always have unprotected sex

- (iii) Use condoms during coitus
- (iv) Avoid sex with unknown partners
- (v) Avoid sharing of needles

- A. (i),(ii),(iii),(iv) and (v)
- B. (i),(iii),(iv) and (v)
- C. (i),(ii) and (iii)
- D. (i),(ii) and (iv)

Answer: B



Watch Video Solution

82. Read the given statements and select the correct option

Statement 1 : Use of condom is a safeguard against AIDS and sexual diseases besides checking pregnancy

Statement 2 : Certain contraceptives are implanted under the skin of the upper arm to prevent pregnancy.

- A. Both statement 1 and 2 are correct
- B. Statement 1 is correct but statement 2 is incorrect
- C. Statement 1 is incorrect but statement 2 is correct
- D. Both statement 1 and 2 are incorrect

Answer: A



Watch Video Solution

83. World AIDS day is

- A. *December*21
- B. *December*1
- C. *November*1
- D. *June*11

Answer: B



Watch Video Solution

84. Which of the following statements is correct ?

- A. Hepatitis B virus (HBV) can be transmitted through blood transfusion, sexual contact, saliva, tears, intravenous drug abuse, tatooing, ear and nose pierceing, sharing of rozors etc
- B. Hepatitis B virus vaccine is the second generation vaccine produced from transgenic yeast by recombinant DNA technology
- C. Heptitis B virus vaccine is the first commercially available human vaccine produced by genetic engineering
- D. all of these

Answer: D



Watch Video Solution

85. Read the given statements and select the correct option

Statement 1 : Hepatitis B virus (HBV) is never transmitted through sexual contact with the infected person

Statement 2 : HBV vaccine is a third generation vaccine produced by recombinant DNA technology.

- A. Both statement 1 and 2 are correct
- B. Statement 1 is correct but statement 2 is incorrect
- C. Statement 1 is incorrect but statement 2 is correct
- D. Both statement 1 and 2 are incorrect

Answer: D



Watch Video Solution

86. Assisted reproduce technologies (ART)

- A. include social awareness programmes to educate people about reproductive health and diseases
- B. include research organisation working to produce new and more effective contraceptives for birth control
- C. include a number of special techniques which assist infertile couples to have children
- D. both (b) and (c)

Answer: C



Watch Video Solution

87. Consider the following statements and select the option stating which ones are true (T) and which ones are false (F)

(i) Abortions could happen spontaneously too

(ii) Infertility is the inability to produce viable offspring due to defects in the female partner only.

(iii) Complete lactation could help in contraception

(iv) Creating awareness can help create a reproductively healthy society.

A. (i) (ii) (iii) (iv)
F F T T

B. (i) (ii) (iii) (iv)
F T F T

C. (i) (ii) (iii) (iv)
T F T T

D. (i) (ii) (iii) (iv)
T T F F

Answer: C



Watch Video Solution

88. Which of the following statements is correct with reference to a test tube baby ?

A. Fertilisation of the egg is completed outside the body , the fertilised egg is then placed in the womb of the mother where the gestation is completed

- B. Fertilisation of the egg is completed in the female genital track. It is then taken out and grown in a large test tube
- C. A prematurely born baby is reared in an incubator
- D. Fertilisation of the egg and growth of the embryo is completed in a large test tube

Answer: A



Watch Video Solution

89. Which two of the following statements are incorrect regarding in vitro fertilisation ?

- (i) In this method, ova from the wife/donor female and sperms from the husband/donor male are induced to form zygote in the uterus
- (ii) If the embryo is having 2 blastomeres, it is transferred into the uterus
- (iii) If the embryo is with more than 8 blastomeres, it is transferred into the uterus.
- (iv) The baby thus produced is called test tube baby.

A. (iii) and (iv)

B. (i) and (ii)

C. (ii) and (iii)

D. (i) and (iv)

Answer: B



Watch Video Solution

90. In vitro fertilisation is a technique that involves transfer of which one of the following into the Fallopian tube ?

A. Embryo only, upto 8 cell stage

B. Either zygote or early embryo upto 8 cell stage

C. Embryo of 32 cell stage

D. Zygote only

Answer: B



[Watch Video Solution](#)

91. The test-tube baby programme employs which one of the following techniques ?

- A. Zygote intra Fallopian transfer (ZIFT)
- B. Intra uterine insemination (IUI)
- C. Gamete intra Fallopian transfer (GIFT)
- D. All of these

Answer: A



[Watch Video Solution](#)

92. The first case of IVF-ET technique success, was reported by

- A. Louis Joy Brown and Banting Best
- B. Patrick Steptoe and Robert Edwards

C. Robert Steptoe and Gilbert Brown

D. Baylis and Starling Taylor

Answer: B



Watch Video Solution

93. Read the following statements

- (i) Birth control pills are likely to cause cardiovascular problems
- (ii) A woman who substitutes or takes the place of the real mother to nurse the embryo is called surrogate mother
- (iii) Numerous children have been produced by in vitro fertilisation but with some abnormalities
- (iv) Women play a key role in the continuity of the family and human species
- (v) Foetal sex determination test should not be banned

Which of the following pair consists of incorrect statements

A. (i) and (ii)

B. (ii) and (iv)

C. (iii) and (v)

D. None of these

Answer: C



Watch Video Solution

94. Which of the following is ART ?

A. IUDs

B. GIFT

C. ZIFT

D. both (b) and (c)

Answer: D



Watch Video Solution

95. The technique called Gamete Intra Fallopian Transfer (GIFT) is recommended for those females

- A. who cannot produce an ovum
- B. who cannot retain the foetus inside uterus
- C. who cannot provide suitable environment for fertilisation
- D. all of these

Answer: A



Watch Video Solution

96. Which method can be used for women that cannot produce ovum but can provide suitable environment ?

- A. IUD
- B. GIFT
- C. IUI

D. ICSI

Answer: B



Watch Video Solution

97. Which of these can be used to cure infertility in couples where male partner has very low sperm count ?

A. IUD

B. GIFT

C. IUI

D. None of these

Answer: C



Watch Video Solution

98. Read the given statements and select the correct option

Statement 1 : Transfer of an ovum collected from a donor into the Fallopian tube of another female who cannot produce an ovum, is called as GIFT

Statement 2 : Transfer of early embryos with upto 8 blastomeres into the Fallopian tube of the female, is called ZIFT.

- A. Both statement 1 and 2 are correct
- B. Statement 1 is correct but statement 2 is incorrect
- C. Statement 1 is incorrect but statement 2 is correct
- D. Both statement 1 and 2 are incorrect

Answer: A



Watch Video Solution

99. Which of the following is wrongly matched ?

- A. IUI - Semen collected from husband or donor is artificially introduced either into the vagina or into the uterus
- B. GIFT - transfer of embryos with more than 8 blastomeres into the Fallopian tube
- C. ICSI - Sperm directly injected into the ovum
- D. ZIFT - Transfer of embryos upto 8 blastomeres into the Fallopian tube

Answer: B



Watch Video Solution

100. Which of the following statements are correct ?

- (i) India's first test tube baby's name is Kum Harsha.
- (ii) Inability to conceive or produce children even after 2 years of unprotected sexual cohabitation is called infertility

(iii) Surgical method of contraception prevents gamete formation

(iv) MTPs are relatively safe upto 12 weeks of pregnancy.

A. (i),(ii) and (iv)

B. (ii),(iii) and (iv)

C. (iii) and (iv)

D. (i) and (iii)

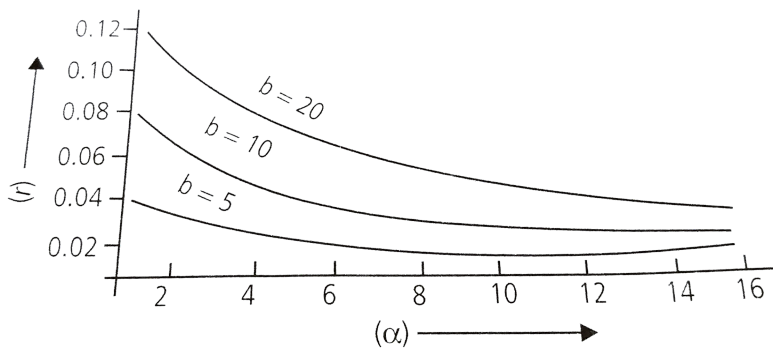
Answer: A



Watch Video Solution

Hots

1. The graph below shows the relationships of per capita population growth rate (r), fecundity (b) and age at first reproduction (α) in an animal speies



What is the most important conclusion to be drawn from the graph ?

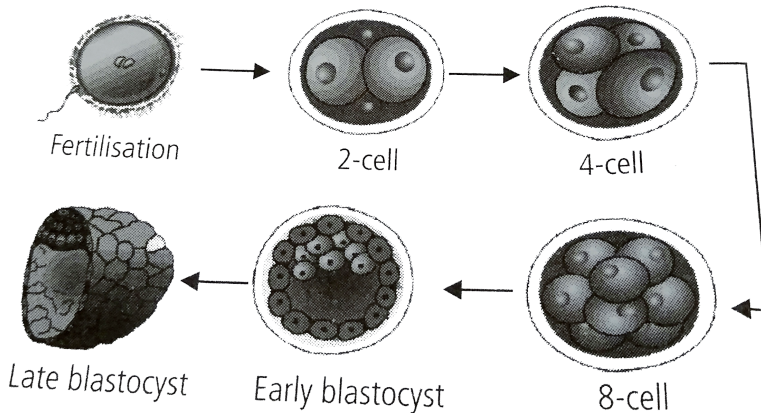
- A. The population growth rate decreases as first reproduction is postponed to a later stage, regardless of fecundity
- B. At any α , the higher the fecundity the higher is the population growth rate achieved
- C. As the age at first reproduction is postponed further, the benefits of increasing fecundity on the population growth rate become progressively negligible
- D. None of these

Answer: A



Watch Video Solution

2. The diagram below represents the development of a human zygote fertilisation to the late blastocyst



Select a correct statement from the following options.

- A. If two sperms penetrate the oocyte membrane at the time of fertilisation, conjoined twins with shared body parts will be born
- B. During the process of in vitro fertilisation with embryo transfer (IVF-ET), the embryo is transferred at the 2-cell stage to the mother's uterus
- C. The outer cells of the early blastocyst will eventually form the foetus

D. In ZIFT, the zygote with 8-cell stage is transferred into the Fallopian tube

Answer: D



Watch Video Solution

3. Artificial insemination means

- A. artificial introduction of sperms of a healthy donor into the vagina
- B. introduction of sperms of a healthy donor directly into the ovary
- C. transfer of sperms of a healthy donor to a test tube containing ova
- D. transfer of sperms of husband to a test tube containing ova.

Answer: A



Watch Video Solution

4. Which one of the following statements is correct regarding sexually transmitted infections (STIs) ?

- A. A person may contact syphilis by sharing milk with one already suffering from the disease
- B. Haemophilia is one of the STIs
- C. Genital herpes and sickle-cell anemia are both STIs
- D. None of these

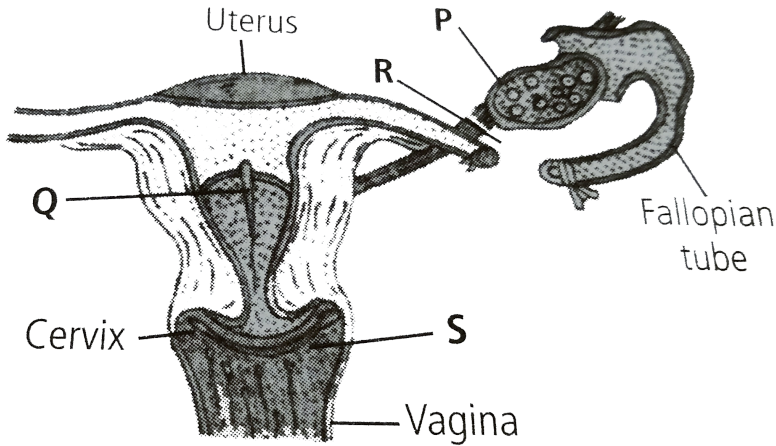
Answer: D



Watch Video Solution

5. The given figure represents locations in human female reproductive system that are affected by different birth control measures. Identify

them and select the correct option.



- | | | | | |
|----|--------------------------|--------------------------|------------------|----------------|
| A. | P
Copper T | Q
Birth control pills | R
Tubectomy | S
Condom |
| B. | P
Birth control pills | Q
Copper T | R
Tubectomy | S
Condom |
| C. | P
Birth control pills | Q
Diaphragm | R
Ovariectomy | S
Copper T |
| D. | P
Copper T | Q
Birth control pills | R
Ovariectomy | S
Diaphragm |

Answer: B



Watch Video Solution

1. The method of directly injecting a sperm into ovum in assisted reproductive technology is called

- A. GIFT
- B. ZIFT
- C. ICSI
- D. ET

Answer: C



Watch Video Solution

2. Increased IMR and decreased MMR in a population will

- A. cause rapid increase in growth rate
- B. result in decline in growth rate
- C. not cause significant change in growth rate
- D. result in explosive population

Answer: B



Watch Video Solution

3. Intensity lactating mothers do not generally conceive due to the

- A. suppression of gonadotropins
- B. hypersecretion of gonadotropins
- C. suppression of gametic transport
- D. suppression of fertilisation

Answer: A



Watch Video Solution

4. Sterilisation techniques are generally fool proof methods of contraception with least side effects. Yet, this is the last option for the couples because

(i) It is almost irreversible

(ii) of the misconception that it will reduce sexual urge/drive

(iii) it is a surgical procedure

(iv) of lack of sufficient facilities in many parts of the country

Choose the correct option

A. (i) and (iii)

B. (ii) and (iii)

C. (ii) and (iv)

D. (i),(ii),(iii) and (iv)

Answer: D



Watch Video Solution

5. A national level approach to build up a reproductively healthy society was taken up in our country in

A. 1950 s

B. 1960 s

C. 1980 s

D. 1990 s

Answer: A



Watch Video Solution

6. Emergency contraceptives are effective if used within

A. 72 hrs of coitus

B. 72 hrs of ovulation

C. 72 hrs of menstruation

D. 72 hrs of implantation

Answer: A



Watch Video Solution

7. Choose the right one among the statements given below.

- A. IUDs are generally inserted by the user herself
- B. IUDs increase phagocytosis reaction in the uterus
- C. IUDs suppress gametogenesis
- D. IUDs once inserted need not be replaced

Answer: B



Watch Video Solution

8. Following statements are given regarding MTP. Choose the correct options given below.

- (i) MTPs are generally advised during first trimester
- (ii) MTPs are used as a advised during first trimester
- (iii) MTPs are always surgical
- (iv) MTPs require the assistance of qualified medical personnel.

A. (ii) and (iii)

B. (i) and (iii)

C. (i) and (iv)

D. (i) and (ii)

Answer: C



Watch Video Solution

9. From the sexually transmitted diseases mentioned below, identify the one which does not specifically affect the sex organs.

A. Syphilis

B. AIDS

C. Gonorrhea

D. Genital warts

Answer: B



[Watch Video Solution](#)

10. Condoms are one of the most contraceptives because of the following reasons

- A. These are effective barriers for insemination
- B. They do not interfere with coital act
- C. These help in reducing the risk of STDs
- D. All of the above

Answer: D



[Watch Video Solution](#)

11. Choose the correct statement regarding the ZIFT procedure

- A. Ova collected from a female donor are transferred to the Fallopian tube to facilitate zygote formation

- B. Zygote is collected from a female donor and transferred to the Fallopian tube
- C. Zygote is collected from a female donor and transferred to the utreus
- D. Ova collected from a female donor and transferred to the uterus.

Answer: B



Watch Video Solution

12. The correct surgical procedure as a contraceptive method is

- A. overiectomy
- B. hysterectomy
- C. vasectomy
- D. castration

Answer: C



[Watch Video Solution](#)

13. Diaphragms are contraceptive devices used by the females. Choose the correct option from the statements given below

- (i) They are introduced into the uterus
- (ii) They are placed to cover the cervical region
- (iii) They act as physical barriers for sperm entry
- (iv) They act as spermicidal agents.

A. (i) and (ii)

B. (i) and (iii)

C. (ii) and (iii)

D. (iii) and (iv)

Answer: C



[Watch Video Solution](#)

1. Assertion : Introduction of sex education in schools should be encouraged

Reason : Sex education in schools will encourage children to believe in myths about sex related aspects.

- A. If both assertion and reason are true and reason is the correct explanation of assertion
- B. If both assertion and reason are true but reason is not the correct explanation of assertion
- C. If assertion is true but reason is false
- D. If both assertion and reason are false

Answer: C



Watch Video Solution

2. Assertion : Periodic abstinence is a method in which couples avoid from coitus from day 17 to 27 of menstrual cycle

Reason : Periodic abstinence is very effective method and 100 % sure of birth control

A. If both assertion and reason are true and reason is the correct explanation of assertion

B. If both assertion and reason are true but reason is not the correct explanation of assertion

C. If assertion is true but reason is false

D. If both assertion and reason are false

Answer: D



Watch Video Solution

3. Assertion : As long as the mother breast-feeds the child fully, chances of conception are almost nil

Reason : Lactational amenorrhea method is based on the fact that ovulation does not occur during the period of intense lactation

A. If both assertion and reason are true and reason is the correct explanation of assertion

B. If both assertion and reason are true but reason is not the correct explanation of assertion

C. If assertion is true but reason is false

D. If both assertion and reason are false

Answer: A



Watch Video Solution

4. Assertion : In barrier methods, ovum and sperms are prevented from physical meetings

Reason : Barrier methods are used during coitus, to prevent the entry of ejaculated semen into the female reproductive tract.

A. If both assertion and reason are true and reason is the correct explanation of assertion

B. If both assertion and reason are true but reason is not the correct explanation of assertion

C. If assertion is true but reason is false

D. If both assertion and reason are false

Answer: A



Watch Video Solution

5. Assertion : Diaphragms, cervical caps and vaults are barriers made of rubber

Reason : Diaphragms, cervical caps and vaults are inserted into the male reproductive tract during coitus.

A. If both assertion and reason are true and reason is the correct explanation of assertion

B. If both assertion and reason are true but reason is not the correct explanation of assertion

C. If assertion is true but reason is false

D. If both assertion and reason are false

Answer: C



Watch Video Solution

6. Assertion : Pills are very effective contraceptives with few side effects

Reason : Pills inhibit ovulation and implanatation as well as retard entry of sperms.

- A. If both assertion and reason are true and reason is the correct explanation of assertion
- B. If both assertion and reason are true but reason is not the correct explanation of assertion
- C. If assertion is true but reason is false
- D. If both assertion and reason are false

Answer: A



View Text Solution

7. Assertion : Saheli, the new oral contraceptive for the females contains a steroidal preparation

Reason : Saheli is taken daily without a break.

- A. If both assertion and reason are true and reason is the correct explanation of assertion
- B. If both assertion and reason are true but reason is not the correct explanation of assertion
- C. If assertion is true but reason is false
- D. If both assertion and reason are false

Answer: D



Watch Video Solution

8. Assertion : Sterilisation is a terminal method used only for males

Reason : Sterilisation is highly effective and its reversibility is very good.

- A. If both assertion and reason are true and reason is the correct explanation of assertion

- B. If both assertion and reason are true but reason is not the correct explanation of assertion
- C. If assertion is true but reason is false
- D. If both assertion and reason are false

Answer: D



Watch Video Solution

9. Assertion : In vasectomy, a small part of the vas deferens is removed or tied up

Reason : In tubectomy, a small part of the Fallopian tube is removed or tied up.

- A. If both assertion and reason are true and reason is the correct explanation of assertion
- B. If both assertion and reason are true but reason is not the correct explanation of assertion

C. If assertion is true but reason is false

D. If both assertion and reason are false

Answer: B



Watch Video Solution

10. Assertion : Second trimester abortion are much more complicated

Reason : After 12 weeks the foetus becomes intimately associated with the maternal tissues.

A. If both assertion and reason are true and reason is the correct explanation of assertion

B. If both assertion and reason are true but reason is not the correct explanation of assertion

C. If assertion is true but reason is false

D. If both assertion and reason are false

Answer: A



Watch Video Solution

11. Assertion : Syphilis, gonorrhoea and AIDS are STIs.

Reason : Syphilis, gonorrhoea and AIDS are transmitted through sexual intercourse.

- A. If both assertion and reason are true and reason is the correct explanation of assertion
- B. If both assertion and reason are true but reason is not the correct explanation of assertion
- C. If assertion is true but reason is false
- D. If both assertion and reason are false

Answer: A



Watch Video Solution

12. Assertion : Infertility is the inability to produce children inspite of unprotected sexual co-habitation

Reason : Infertile couples could have children using assisted reproductive technologies (ART)

A. If both assertion and reason are true and reason is the correct explanation of assertion

B. If both assertion and reason are true but reason is not the correct explanation of assertion

C. If assertion is true but reason is false

D. If both assertion and reason are false

Answer: B



Watch Video Solution

13. Assertion : IVF is fertilisation outside the body of woman

Reason : The zygote upto 8 blastomeres could be transferred into the Fallopian tube

- A. If both assertion and reason are true and reason is the correct explanation of assertion
- B. If both assertion and reason are true but reason is not the correct explanation of assertion
- C. If assertion is true but reason is false
- D. If both assertion and reason are false

Answer: B



Watch Video Solution

14. Assertion : IUT is transfer of embryo with more than 8 blastomeres into the Fallopian tubes

Reason : IUT is a very popular method of forming embryos in vivo.

- A. If both assertion and reason are true and reason is the correct explanation of assertion
- B. If both assertion and reason are true but reason is not the correct explanation of assertion
- C. If assertion is true but reason is false
- D. If both assertion and reason are false

Answer: D



Watch Video Solution

15. Assertion : Intra cytoplasmic sperm injection (ICSI) is a procedure to form a embryo in vitro

Reason : In ICSI, sperm is directly injected into the ovum.

- A. If both assertion and reason are true and reason is the correct explanation of assertion
- B. If both assertion and reason are true but reason is not the correct explanation of assertion
- C. If assertion is true but reason is false
- D. If both assertion and reason are false

Answer: B



Watch Video Solution

Reproductive Health

1. Family planning programme was initiated in

- A. 1920
- B. 1930

C. 1950

D. 1951

Answer: D



Watch Video Solution

2. RCH stands for

A. Routine Check-up of Health

B. Reproduction Cum Hygiene

C. Reversible Contraceptive Hazards

D. Reproductive and Child Health Care

Answer: D



Watch Video Solution

3. Reproductive health in society can be improved by

- (i) Introduction of sex education in schools
- (ii) Increased medical assistance
- (iii) Awareness about contraception and STDs
- (iv) Equal opportunities to male and female child
- (v) Encouraging myths and misconceptions

A. (i),(ii),(iii),(iv),(v)

B. (i),(ii),(iv),(v)

C. (i),(ii),(iii),(iv)

D. (ii),(v)

Answer: C



Watch Video Solution

4. Which of the following statements are correct ?

- (i) Family planning programmes were initiated in 1951

- (ii) According to WHO, reproductive health means total well being in the physical, social, behavioural and emotional aspects of reproduction
- (iii) Saheli was developed at CDRI in Lucknow
- (iv) Amniocentesis should not be banned as it is a foetal sex determination test.

- A. (i) and (ii) only
- B. (ii) and (iii) only
- C. (i),(ii) and (iii)
- D. (iii) and (iv) only

Answer: C



Watch Video Solution

5. Aminocentesis is a technique used to

- A. determine errors in amino acid metabolism in embryo
- B. pin point specific cardiac ailments in embryo

C. determine any hereditary genetic abnormality in embryo

D. all of these

Answer: C



Watch Video Solution

6. Read the given statements and select the correct option

Statement 1 : Amniocentesis is often misused

Statement 2 : Amniocentesis is being used to determine the sex of the foetus so that female foetus may be aborted.

A. Both statement 1 and 2 are correct

B. Statement 1 is correct but statement 2 is incorrect

C. Statement 1 is incorrect but statement 2 is correct

D. Both statement 1 and 2 are incorrect

Answer: A



Watch Video Solution



7. Which of the following statements is/are correct ?

- A. Amniocentesis and CVS (chorionic villi sampling) are the techniques of detection of foetal disorders during early pregnancy
- B. Reproduction health refers to healthy reproductive organs with normal functions
- C. India was amongst the first countries in the world to initiate action plans and programmes at a national level to attain total reproductive health
- D. all of these

Answer: D



View Text Solution

8. Which of the following cannot be detected in a developing foetus by amniocentesis ?

- A. Jaundice
- B. Down's syndrome
- C. Systick fibrosis
- D. Colourblindness

Answer: A



Watch Video Solution

9. In which of the following weeks of pregnancy CVS is done ?

- A. $12^{th} - 14^{th}$ week
- B. $8^{th} - 10^{th}$ week
- C. $5^{th} - 7^{th}$ week
- D. None of these

Answer: B



Watch Video Solution

10. Read the given statements and select the correct option

Statement 1 : The world population was around 2 billions in 1900 which has rocketed to about 6 billions by 2000

Statement 2 : Increase in longevity due to decline in death rate , maternal mortality rate and infant mortality rate has been some major causes of population explosion.

- A. Both statement 1 and 2 are correct
- B. Statement 1 is correct but statement 2 is incorrect
- C. Statement 1 is incorrect but statement 2 is correct
- D. Both statement 1 and 2 are incorrect

Answer: A



Watch Video Solution

11. Causes for increased population growth in India is/are

- A. increase in birth rate
- B. decrease in death rate
- C. lack of education
- D. all of these

Answer: D



Watch Video Solution

12. Which of the following are the reasons for population explosion ?

- (i) Increased health facilities
- (ii) Rapid increase in MMR
- (iii) Rapid increase in IMR
- (iv) Rapid decrease in MMR
- (v) Decrease in number of people reaching reproductive age

A. (i) and (iv)

B. (iii) and (v)

C. (ii) and (iii)

D. (i) and (v)

Answer: A



Watch Video Solution

13. Which of the following pairs contributes to an increase in population ?

A. Natality and immigration

B. Mortality and emigration

C. Natality and emigration

D. Mortality and immigration

Answer: A



Watch Video Solution

14. Certain characteristic demographic features of developing countries are

- A. high fertility, high density, rapidly rising mortality rate and a very young age distribution
- B. high infant mortality rate, low fertility, uneven population growth and a very young age distribution
- C. high mortality, high density, uneven population growth and a very old age distribution
- D. high fertility, low or rapidly falling mortality rate, rapid population growth and a very young age distribution.

Answer: D



Watch Video Solution

15. Which of the following is correct regarding the consequences of over population ?

- A. It increases the poverty of a country
- B. It leads to shortage of food supply
- C. It results in unemployment
- D. all of these

Answer: D



Watch Video Solution

16. Carrying capacity is

- A. maximum number of individuals which an environment can sustain
- B. minimum number of individuals which an environment can sustain
- C. both (a) and (b)
- D. None of these

Answer: A



Watch Video Solution

17. Read the given statements and select the correct option

Statement 1 : Physiological capacity of organisms to produce off spring under natural conditions is called as reproductive potential

Statement 2 : Minimum number of individuals which an environment can sustain is referred to as its carrying capacity

- A. Both statement 1 and 2 are correct
- B. Statement 1 is correct but statement 2 is incorrect
- C. Statement 1 is incorrect but statement 2 is correct
- D. Both statement 1 and 2 are incorrect

Answer: B



Watch Video Solution

18. The best way to decrease population of a country is

- A. to educate people
- B. to have better houses
- C. to kill people on larger scale
- D. to practice and implement family planning

Answer: D



Watch Video Solution

19. Which of the following correctly describes the measures that can be used to control over-population ?

- A. Educating people about the advantages of a small family
- B. Raising the age of marriage
- C. Encouraging family planning programme
- D. all of these

Answer: D



Watch Video Solution

20. Which of the following is not a characteristic of an ideal contraceptive ?

- A. User - friendly
- B. Irreversible
- C. Easily available
- D. Least side-effects

Answer: B



Watch Video Solution

21. Fill up the blanks in the following paragraph by selecting the correct option

- A. i methods work on the principle of avoiding chances of ovum and sperms meeting
- B. ii is one such method in which the couples avoid coitus from day 10 to 17 of the menstrual cycle
- C. iii is another method in which the male partner withdraws his penis from the vagina just before ejaculation so as to avoid insemination
- D. iv method is based on the fact that ovulation and therefore the cycle do not occur during the period of intense loctation following parturition.

A.

- | | | | |
|---------|--------------------|---------------------|------------------------|
| (i) | (ii) | (iii) | (iv) |
| Barrier | Coitus interruptus | Periodic abstinence | Lactational amenorrhea |

B.

- | | | | |
|------|------------------------|--------------------|---------------------|
| (i) | (ii) | (iii) | (iv) |
| IUDs | Lactational amenorrhea | Coitus interruptus | Periodic abstinence |

C.

- | | | | |
|---------|---------------------|--------------------|------------------------|
| (i) | (ii) | (iii) | (iv) |
| Natural | Periodic abstinence | Coitus interruptus | Lactational amenorrhea |

D.

- | | | | |
|----------|---------------------|--------------------|------------------------|
| (i) | (ii) | (iii) | (iv) |
| Surgical | Periodic abstinence | Coitus interruptus | Lactational amenorrhea |

Answer: C



Watch Video Solution

22. On which of the following facts does the method of periodic abstinence is based ?

- A. Ovulation occurs on about the 14th day of menstruation
- B. Ovum remains alive for about 1-2 days
- C. Sperms survive for about 3 days
- D. all of these

Answer: D



Watch Video Solution

23. What is true for lactational amenorrhea ?

- (i) It means absence of menstruation

- (ii) Ovulation does not occur during the lactational period
- (iii) Chances of contraception are almost nil upto six months following parturition
- (iv) Side effects are almost nil
- (v) Contraceptive efficiency reduces after the period of intense lactation
- (vi) It is natural method of contraception
- (vii) It increases phagocytosis of sperms

- A. (ii),(iii),(iv),(v) and (vi)
- B. (i),(ii),(iii) and (iv)
- C. (ii),(iii),(iv),(v) and (vii)
- D. (i),(ii),(iii),(iv),(v) and (vi)

Answer: D



Watch Video Solution

24. Read the given statements and select the correct option

Statement 1 : Diaphragms, cervical caps and vaults are made of rubber

and are inserted into the female reproductive tract to cover the cervix before coitus

Statement 2 : These are chemical barrier of conception which are reusable

- A. Both statement 1 and 2 are correct
- B. Statement 1 is correct but statement 2 is incorrect
- C. Statement 1 is incorrect but statement 2 is correct
- D. Both statement 1 and 2 are incorrect

Answer: B



Watch Video Solution

25. Which of the following is a non-medicated intrauterine device (IUD) ?

- A. CuT
- B. Lippes Loop
- C. Cu7

D. LNG-20

Answer: B



Watch Video Solution

26. Multiload device contains

A. manganese

B. iron

C. copper

D. calcium

Answer: C



Watch Video Solution

27. Which of the following is not an intrauterine device ?

A. Progestasert

B. Multiload-375

C. Norplant

D. Lippes loop

Answer: C



Watch Video Solution

28. What is the work of copper-T ?

A. To inhibit ovulation

B. To inhibit fertilisation

C. To inhibit implantation of blastocyst

D. To inhibit gametogenesis

Answer: B



Watch Video Solution

29. IUDs prevent pregnancy by

- A. inhibiting physiological and morphological uterine changes required for implantation
- B. increasing phagocytosis of spermatozoa within uterus
- C. suppressing motility of sperms as well as their fertilising capacity
- D. all of these

Answer: D



Watch Video Solution

30. CuT is an intrauterine contraceptive device. Select the option that correctly defines the role of Cu

- A. Cu ions make uterus unsuitable for implantation

- B. Cu ions suppress sperm motility and the fertilising capacity of the sperms
- C. Cu ions make cervix hostile to sperms
- D. all of these

Answer: B



Watch Video Solution

31. Read the given statements and select the correct option

Statement 1 : CuT,Cu7 and multiload 375 are the hormone releasing IUDs

Statement 2 : Cu ions released by some IUDs affect the ability of uterine wall to support embryo thus cause contraception.

- A. Both statement 1 and 2 are correct
- B. Statement 1 is correct but statement 2 is incorrect
- C. Statement 1 is incorrect but statement 2 is correct
- D. Both statement 1 and 2 are incorrect

Answer: D



Watch Video Solution

32. Cu ions released from copper releasing intrauterine devices (IUDs)

- A. prevent ovulation
- B. make uterus unsuitable for implantation
- C. decrease phagocytosis of sperms
- D. suppress sperm motility

Answer: D



Watch Video Solution

33. Select the correct statement regarding IUDs out of the following

- A. Intrauterine devices (IUDs) are objects which are inserted in the uterus of the female through vagina by expert doctors
- B. IUDs may be categorised as non-mendicated IUDs (e.g., lippes loop), copper releasing IUDs (e.g., CuT, Cu7, Multiload 375) and hormone releasing IUDs (e.g., progestasert, LNG-20)
- C. In india, use of IUDs is one of the most widely accepted methods of contraception these days
- D. all of these

Answer: D



Watch Video Solution

34. The birth control device used by women is

- A. diaphragm
- B. vault

C. copper T

D. all of these

Answer: D



Watch Video Solution

35. Main disadvantages of intrauterine contraceptive devices is that

A. the devices are permanently placed in uterus and cannot be removed even if couple want to have children

B. the device has to be inserted by physician in the uterus through vagina

C. the devices are expelled out without the knowledge of the wearers

D. both (a) and (c)

Answer: C



Watch Video Solution

36. Which of the following are the drawbacks of the IUDs ?

- (i) Their spontaneous expulsion, even without the woman's knowledge
- (ii) They can cause excess mensutrual bleeding and pain
- (iii) Risk of infection
- (iv) They increase the phagocytosis of sperms
- (vi) They suppress sperm motility.

A. (i),(iii) and (vi)

B. (i),(ii),(iv) and (vi)

C. (i),(ii),(iii) and (v)

D. (i),(ii),(iii) and (iv)

Answer: D



Watch Video Solution

37. The most important component of oral contraceptive pills is

A. progesterone-estrogen

B. growth hormone

C. thyroxine

D. luteinising hormone

Answer: A



Watch Video Solution

38. Progestin-estradiol combined contraceptive pills inhibit ovulation by

A. negative feedback on the release of estrogen from ovary required for follicular development in follicular phase

B. Preventing the uterine physiological and morphological changes required for implantation

C. inhibiting the secretion of follicle stimulating hormone (FSH) and luteinising hormone (LH) that are necessary for ovulation

D. both (a) and (c)

Answer: C



Watch Video Solution

39. Progesterone pill helps in preventing pregnancy by allowing

A. ova formation

B. fertilisation

C. implantation

D. None of these

Answer: A



Watch Video Solution

40. How do the pills work ?

- (i) Inhibit ovulation and implantation
- (ii) Alter the quality of cervical mucus to prevent or retard the entry of sperms
- (iii) Inhibit spermatogenesis

A. (i),(ii) and (iii)

B. (i) and (ii)

C. (ii) only

D. (iii) only

Answer: B



Watch Video Solution

41. Read the given statement and select the correct option

Statement 1 : Saheli is an pill which has high contraceptive value and very little side effects

Statement 2 : Saheli contains progestin with no estrogen, and a non-steroidal preparation called centchroman.

- A. Both statement 1 and 2 are correct
- B. Statement 1 is correct but statement 2 is incorrect
- C. Statement 1 is incorrect but statement 2 is correct
- D. Both statements 1 and 2 are incorrect

Answer: A



Watch Video Solution

42. What is true about "Saheli" ?

- (i) Developed at the CDRI, Lucknow
- (ii) Contains a steroidal preparation
- (iii) "Once-a-week" pill
- (iv) Many side effects
- (v) High contraceptive value

(vi) Very few side effects

(vii) Low contraceptive value

A. (i),(ii),(iii),(v),(vi)

B. (i),(iii),(v),(vi)

C. (i),(ii),(iii),(iv),(v)

D. (i),(iii),(iv),(v)

Answer: B

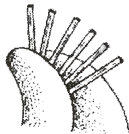


Watch Video Solution

43. Identify the figures of the contraceptives given below and select the correct option



A



B



C



D

A. A
Condom

B. B
Implant

C. C
CuT

D. D
Condom for male

	A	B	C	D
B.	Implant	CuT	Condom for female	Condom for male
	A	B	C	D
C.	Condom for male	CuT	Implant	Condom for female
	A	B	C	D
D.	Condom for male	Implant	CuT	Condom for female

Answer: D



Watch Video Solution

44. Which of the following contraceptives are implanted under the skin ?

(a)



A.

(b)

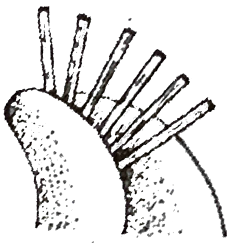
B.



(c)

C.





D.

Answer: D



Watch Video Solution

45. Select the correct statement regarding subcutaneous implantation of synthetic progesterone

- A. It is a contraception technique
- B. Its acts by blocking ovulation and prevents sperm transport
- C. Six match-stick sized capsules containing the progestogen steroid are inserted under the skin of the inner arm above the elbow
- D. all of these

Answer: D



[Watch Video Solution](#)

46. Read of following statements and select the correct option

Statement 1 : Subcutaneous implantation of synthetic progesterone prevents pregnancy for about 5 years

Statement 2 : A tiny amount of progesterone is steadily released from the inserts into the blood.

- A. Both statement 1 and 2 are correct
- B. Statement 1 is correct but statement 2 is incorrect
- C. Statement 1 is incorrect but statement 2 is correct
- D. Bothe statements 1 and 2 are incorrect

Answer: A



[Watch Video Solution](#)

47. Consider the following statement and select the option stating which ones are true (T) and which ones are false (F)

- (i) Emigration is the movement of individuals out of a place or country
- (ii) Combined contraceptive pills contain synthetic progesterone and estrogen to check ovulation
- (iii) Depo-Provera are estrogen derivative injections
- (iv) The scientific study of human population is called demography.

- | | | | | |
|----|-----|------|-------|------|
| | (i) | (ii) | (iii) | (iv) |
| A. | T | T | F | T |
| | (i) | (ii) | (iii) | (iv) |
| B. | T | F | T | F |
| | (i) | (ii) | (iii) | (iv) |
| C. | T | F | F | T |
| | (i) | (ii) | (iii) | (iv) |
| D. | T | F | T | T |

Answer: A



Watch Video Solution

48. Read the following statements and select the option having both incorrect statements

- (i) Condoms decrease sperm motility
- (ii) Diaphragms, cervical caps and vaults are for both males and females
- (iii) IUDs are inserted by expert nurses
- (iv) Sterilisation is a terminal method to prevent further pregnancy.

A. (i) and (iii)

B. (i) and (ii)

C. (iii) nad (iv)

D. (ii) and (iv)

Answer: B



Watch Video Solution

49. Given below are four methods (A-D) and their modes of action (i-iv) in achieving contraception. Select their correct matching from the four

options that follow

Method		Mode of Action
A. Oral pill	(i)	Prevents sperms reaching cervix
B. Condom	(ii)	Suppresses sperm motility
C. Vasectomy	(iii)	Prevents ovulation
D. Copper T	(iv)	Semen contain no sperms

A. A-(iii),B-(iv),C-(i),D-(ii)

B. A-(ii),B-(iii),C-(i),D-(iv)

C. A-(iii),B-(i),C-(iv),D-(ii)

D. A-(iv),B-(i),C-(ii),D-(iii)

Answer: C



Watch Video Solution

50. Match the contraceptive methods given under column I with their examples given under column II and select the correct option from the

given codes

Column I		Column II
A. Chemical	(i)	Tubectomy and vasectomy
B. IUDs	(ii)	Copper T and loop
C. Barriers	(iii)	Condom and cervical cap
D. Sterilisation	(iv)	Spermicidal jelly and foam
	(v)	Coitus interruptus and calender method

A. A-(iv),B-(ii),C-(iii),D-(i)

B. A-(iv),B-(v),C-(ii),D-(iii)

C. A-(i),B-(iii),C-(ii),D-(v)

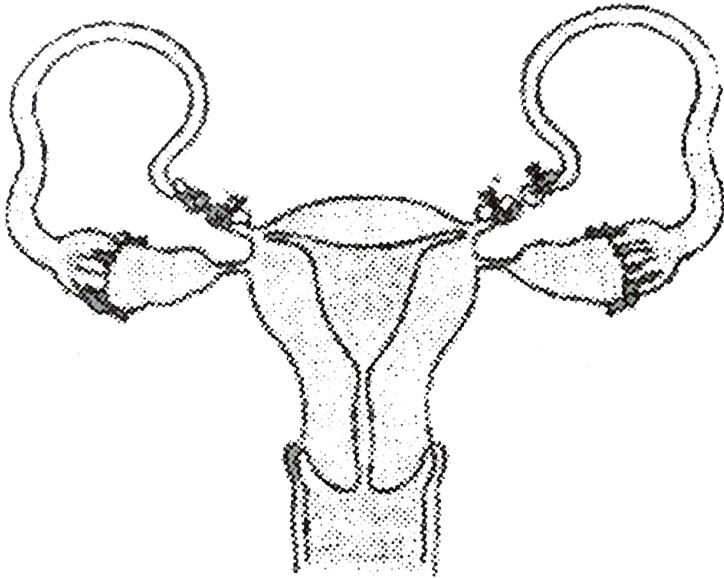
D. A-(iv),B-(ii),C-(v),D-(i)

Answer: A



Watch Video Solution

51. What is the figure given below showing in particular ?



A. Ovarian cancer

B. Uterine cancer

C. Tubectomy

D. Vasectomy

Answer: C



Watch Video Solution

52. Which of the following contraceptive methods correctly matches with its mode of action ?

A.

Contraceptive method

Mode of action

Tubectomy

Makes the uterus unsuitable for implantation

B.

Contraceptive method

Mode of action

Oral pills

Inhibit ovulation and implantation

C.

Contraceptive method

Mode of action

Diaphragms

Spermicidal action increases phagocytosis of sperm

D.

Contraceptive method

Mode of action

IUDs

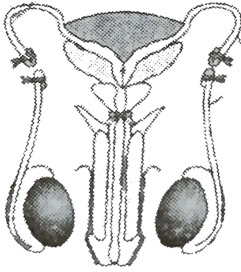
Blocks gamete transport

Answer: B

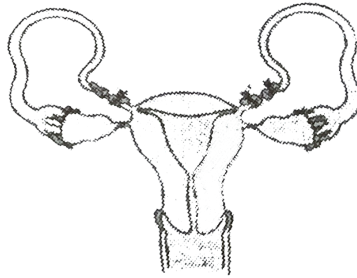


Watch Video Solution

53. Which of the following figures shows tubectomy ?



A



B

- A. A only
- B. B only
- C. Either A or B
- D. None of these

Answer: B



Watch Video Solution

54. Match column I with column II and select the correct option from the given codes

Column I		Column II
A. Natural methods	(i)	Coitus interruptus
B. IUDs	(ii)	LNG - 20
C. Barrier methods	(iii)	Diaphragms
D. Surgical methods	(iv)	Multioload 375
E. Oral contraceptives	(v)	Saheli
	(vi)	Nirodh
	(vii)	Sterilisation
	(viii)	Vasectomy
	(ix)	CuT

A. A-(i),B-(ii) , (iv) , (ix), C-(iii) , (vi),D-(vii) , (viii),E-(v)

B. A-(i),B-(ii) , (iv), C-(iii) , (vi) , (ix), D-(vii) , (viii),E-(v)

C. A-(i),B-(ii) , (iv) , C-(iii) , (ix),D-(vii), (viii), E-(v) , (vi)

D. A-(i), B-(iv) , (ix), C-(ii) , (iii) , (vi),D-(vii), (viii),E-(v)

Answer: A



Watch Video Solution

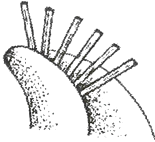
55. Which of the following contraceptive methods has poor reversibility ?

(a)



A.

(b)



B.

(c)



C.

(d)



D.

Answer: C



Watch Video Solution

56. Which of the following statements are correct regarding surgical methods of contraception ?

(i) These are generally advised to the male/female partner as a terminal

method to prevent any more pregnancies

(ii) Surgical procedure in male is called tubectomy and that in the female, vasectomy

(iii) Reversibility is easily possible

(iv) They block gamete transport and thereby prevent conception.

A. (ii) and (iii)

B. (i),(ii) and (iii)

C. (i) and (iv)

D. (ii) and (iv)

Answer: C



Watch Video Solution

57. Which of the following birth control measures can be considered as the safest ?

A. The rhythm method

B. The use of physical barriers

C. contraceptive pills

D. Sterilisation techniques

Answer: D



Watch Video Solution

58. Which of the following is the most widely accepted method of contraception in india at present ?

A. Cervial caps

B. Tubectomy

C. Diaphragms

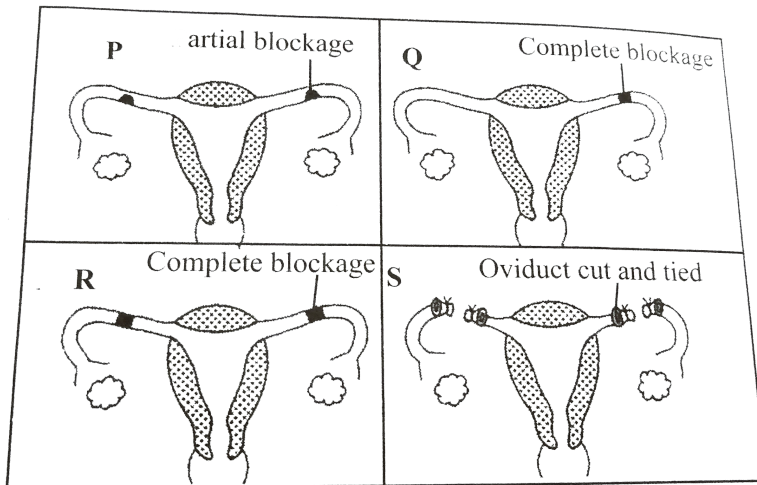
D. IUDs (Intra uterine devices)

Answer: D



Watch Video Solution

59. The accompanying diagram shows the uterine tubes of four women (P,Q,R and S)



In which two women is fertilisation impossible at present ?

- A. P and Q
- B. Q and R
- C. R and S
- D. S and P

Answer: C



Watch Video Solution

60. Which of the following is full proof method of contraception ?

- A. Implantation
- B. Lactational amenorhea
- C. Condoms
- D. Sterilisation

Answer: D



Watch Video Solution

61. Which of the following statements is correct regarding vasectomy ?

- A. It prevents the production of sperms in the tests
- B. It prevents the production of semen
- C. It prevents the movement of sperms into the urethra

D. It prevents a man from having an erection

Answer: C



Watch Video Solution

62. Consider the following statements each one or two blanks

(A) Lippes loops is a i while multiload 375 is a ii IUD

(B) Surgical methods of contraception are also called as iii methods

(C) High MMR and IMR play a significant role in iv human population

Which one of the following options, gives the correct fill ups for the respective blank numbers from (i) to (iv) in the above statements ?

A. (i) copper releasing, (ii) non-medicated (iv) decreasing

B. (iii) barrier, (iv) increasing

C. (i) non-medicated, (ii) copper releasing (iv) decreasing

D. (i) copper releasing (ii) non-medicated, (iii) sterilisation

Answer: C



63. Select the option which correctly fills up the blanks in the following statements

(i) Destruction of embryo or foetus in the uterus is called _____

(ii) Government of India legalised MTP in the year _____

(iii) Natural family planning method is also called _____

(iv) _____ is a method in which the male partner withdraws his penis from vagina just before ejaculation

(v) _____ is a copper releasing and _____ is a hormone releasing intra uterine devices.

A. (i) foeticide (ii) 1961, (iii) rhythm method, (iv) safety period, (v)

Saheli, LNG-20

B. (i) foeticide, (ii) 1971, (iii) rhythm method, (iv) coitus interruptus, (v)

Multiload 375, LNG-20

C. (i) foeticide, (ii) 1965, (iii) rhythm method, (iv) coitus interruptus, (v)

Multiload 375 , CuT

D. (i) matricide, (ii) 1982, (iii) contraception method, (iv) coitus interruptus, (v) Progestasert, LNG-20

Answer: B



Watch Video Solution

64. Which of the following statements is incorrect regarding the medical termination of pregnancy (MTP) ?

A. These help in getting rid of unwanted pregnancies

B. These help in aborting the pregnancies which may be harmful to either mother or foetus or both

C. These contribute in decreasing the human population

D. None of these

Answer: D



Watch Video Solution

65. Which of the following two statements are correct ?

- (i) Medical termination of pregnancy (MTP) during first trimester is generally safe
- (ii) Generally chances of conception are nil until mother breast-feeds the infant upto two years
- (iii) Intrauterine devices like copper-T are effective contraceptives
- (iv) Contraception pills may be taken upto one week after coutus to prevent conception.

- A. (i) and (iii)
- B. (i) and (ii)
- C. (ii) and (iii)
- D. (iii) and (iv)

Answer: A



Watch Video Solution

66. Read the given statements and select the correct option

Statement 1 : MTP is considered relatively safe during the first trimester of pregnancy

Statement 2 : Foetus becomes intimately associated with the maternal tissues after the first trimester.

- A. Both statement 1 and 2 are correct
- B. Statement 1 is correct but statement 2 is incorrect
- C. Statement 1 is incorrect but statement 2 is correct
- D. Both statement 1 and 2 are incorrect

Answer: A



Watch Video Solution

67. Which of the following represents the correct match of a sexually transmitted infection with its pathogen ?

- A. Syphilis - *Treponema pallidum*
- B. Gonorrhoea - *Entamoeba histolytica*
- C. Urethritis - *Bacillus anthracis*
- D. Softsore - *Bacillus brevis*

Answer: A



Watch Video Solution

68. The sexually transmitted infection, that can affect both the male and female genitals and may damage the eyes of babies born of infected mothers is

- A. AIDS
- B. syphilis

C. gonorrhoea

D. hepatitis

Answer: C



Watch Video Solution

69. A sexually transmitted disease symptomised by the development of chancre on the genitals is caused by the infection of

A. *Treponema pallidum*

B. *Neisseria gonorrhoeae*

C. human immunodeficiency virus

D. hepatitis B virus

Answer: A



Watch Video Solution

70. Which of the following is correct regarding HIV, hepatitis B, gonorrhoea, trichomoniasis ?

- A. Trichomoniasis is an STD whereas others are not
- B. Gonorrhoea is a viral disease whereas others are bacterial
- C. HIV is a pathogen whereas others are diseases
- D. Hepatitis B is eradicated completely whereas others are not.

Answer: C



Watch Video Solution

71. Given below are three statements (A-C) each with one or two blanks.

Select the option which correctly fills up the blanks in any two statements

- A. Diseases or infections which are transmitted through sexual intercourse are collectively called i diseases
- B. Genital herpes is ii disease
- C. Sterilisation in males is iii while in females is iv

A. A-(i) venereal , B-(ii) incurable

B. A-(i) venereal , B-(ii) curable

C. A-(i) non-communicable , C-(iii) tubectomy, (iv) vasectomy

D. B-(ii) bacterial , C-(iii) tubectomy, (iv) vasectomy

Answer: A



Watch Video Solution

72. Consider the following statements and select the option stating which ones are true (T) and which ones are false (F)

(i) There are many side effects of tubectomy and vasectomy

(ii) Purpose of tubectomy is to prevent egg formation

(iii) Contraceptive oral pills help in birth control by preventing ovulation

(iv) Genital warts is a sexually transmitted disease caused by herpes virus

(v) In India, there is rapid decline in infant mortality rate and MMR.

A.	(i)	(ii)	(iii)	(iv)	(v)
	T	F	T	F	F

- B. (i) (ii) (iii) (iv) (v)
F F F T T
- C. (i) (ii) (iii) (iv) (v)
T T T F F
- D. (i) (ii) (iii) (iv) (v)
F F T F T

Answer: D



Watch Video Solution

73. Match column I with column II and select the correct option from the given codes

Column I		Column II	
A. Syphilis	(i)	Human papiloma virus	
B. Chancroid	(ii)	Haemophilus ducreyi	
C. AIDS	(iii)	Treponema pallidum	
D. Genital warts	(iv)	HIV	

- A. A B C D
(iii) (ii) (iv) (i)
- B. A B C D
(ii) (i) (iii) (iv)
- C. A B C D
(iv) (ii) (i) (iii)
- D. A B C D
(i) (iv) (iii) (ii)

Answer: A



Watch Video Solution

74. Given below is a list of few sexually transmitted infections. Identify the diseases caused by bacteria among these

- (i) Gonorrhoea
- (ii) Giardiasis
- (iii) Trichomoniasis
- (iv) Chancroid
- (v) Syphilis

A. (i) and (ii)

B. (i),(iv) and (v)

C. (iii) and (v)

D. (ii), (iii) and (iv)

Answer: B



[Watch Video Solution](#)

75. It is disease which mainly affects mucous membrane of urinogental tract. In males, burning feeling on passing urine, a yellow discharge accompanied by fever, headache and feeling of illness occurs. Its name is

- A. phenylketonuria
- B. gonorrhoea
- C. AIDS
- D. None of these

Answer: B



[Watch Video Solution](#)

76. Which one of the following groups includes sexually transmitted infections caused by bacteria only ?

- A. Syphilis, gonorrhoea, chancroid

B. Syphilis, chlamydia, chancroid

C. Syphilis, gonorrhoea, scabies

D. Syphilis, scabies, pediculosis

Answer: A



Watch Video Solution

77. Confirmatory test for STIs is

A. ELISA

B. PCR

C. DNA hybridisation

D. all of these

Answer: D



Watch Video Solution

78. Hypatitis B is transmitted through

- A. blood transfusion
- B. intimate physical contact
- C. sexual contact
- D. all of these

Answer: D



Watch Video Solution

79. The common means of transmission of AIDS is

- A. sexual intercourse
- B. blood transfusion
- C. placental tranfer
- D. all of these

Answer: D



Watch Video Solution

80. Which of the following STIs are not completely curable ?

- A. Chlamydiasis, gonorrhoea, trichomoniasis
- B. Chancroid, syphilis, genital warts
- C. AIDS, syphilis, hepatitis B
- D. AIDS, genital herpes, hepatitis B

Answer: D



Watch Video Solution

81. To avoid transmission of STIs we should

- (i) Avoid sex with multiple partners
- (ii) Always have unprotected sex

- (iii) Use condoms during coitus
- (iv) Avoid sex with unknown partners
- (v) Avoid sharing of needles

- A. (i),(ii),(iii),(iv) and (v)
- B. (i),(iii),(iv) and (v)
- C. (i),(ii) and (iii)
- D. (i),(ii) and (iv)

Answer: B



Watch Video Solution

82. Read the given statements and select the correct option

Statement 1 : Use of condom is a safeguard against AIDS and sexual diseases besides checking pregnancy

Statement 2 : Certain contraceptives are implanted under the skin of the upper arm to prevent pregnancy.

- A. Both statement 1 and 2 are correct
- B. Statement 1 is correct but statement 2 is incorrect
- C. Statement 1 is incorrect but statement 2 is correct
- D. Both statement 1 and 2 are incorrect

Answer: A



Watch Video Solution

83. World AIDS day is

- A. *December*21
- B. *December*1
- C. *November*1
- D. *June*11

Answer: B



Watch Video Solution

84. Which of the following statements is correct ?

- A. Hepatitis B virus (HBV) can be transmitted through blood transfusion, sexual contact, saliva, tears, intravenous drug abuse, tatooing, ear and nose pierceing, sharing of rozors etc
- B. Hepatitis B virus vaccine is the second generation vaccine produced from transgenic yeast by recombinant DNA technology
- C. Heptitis B virus vaccine is the first commercially available human vaccine produced by genetic engineering
- D. all of these

Answer: D



Watch Video Solution

85. Read the given statements and select the correct option

Statement 1 : Hepatitis B virus (HBV) is never transmitted through sexual contact with the infected person

Statement 2 : HBV vaccine is a third generation vaccine produced by recombinant DNA technology.

- A. Both statement 1 and 2 are correct
- B. Statement 1 is correct but statement 2 is incorrect
- C. Statement 1 is incorrect but statement 2 is correct
- D. Both statement 1 and 2 are incorrect

Answer: D



Watch Video Solution

86. Assisted reproduce technologies (ART)

- A. include social awareness programmes to educate people about reproductive health and diseases
- B. include research organisation working to produce new and more effective contraceptives for birth control
- C. include a number of special techniques which assist infertile couples to have children
- D. both (b) and (c)

Answer: C



Watch Video Solution

87. Consider the following statements and select the option stating which ones are true (T) and which ones are false (F)

(i) Abortions could happen spontaneously too

(ii) Infertility is the inability to produce viable offspring due to defects in the female partner only.

(iii) Complete lactation could help in contraception

(iv) Creating awareness can help create a reproductively healthy society.

A. (i) (ii) (iii) (iv)
F F T T

B. (i) (ii) (iii) (iv)
F T F T

C. (i) (ii) (iii) (iv)
T F T T

D. (i) (ii) (iii) (iv)
T T F F

Answer: C



Watch Video Solution

88. Which of the following statements is correct with reference to a test tube baby ?

A. Fertilisation of the egg is completed outside the body , the fertilised egg is then placed in the womb of the mother where the gestation is completed

- B. Fertilisation of the egg is completed in the female genital track. It is then taken out and grown in a large test tube
- C. A prematurely born baby is reared in an incubator
- D. Fertilisation of the egg and growth of the embryo is completed in a large test tube

Answer: A



Watch Video Solution

89. Which two of the following statements are incorrect regarding in vitro fertilisation ?

- (i) In this method, ova from the wife/donor female and sperms from the husband/donor male are induced to form zygote in the uterus
- (ii) If the embryo is having 2 blastomeres, it is transferred into the uterus
- (iii) If the embryo is with more than 8 blastomeres, it is transferred into the uterus.
- (iv) The baby thus produced is called test tube baby.

A. (iii) and (iv)

B. (i) and (ii)

C. (ii) and (iii)

D. (i) and (iv)

Answer: B



Watch Video Solution

90. In vitro fertilisation is a technique that involves transfer of which one of the following into the Fallopian tube ?

A. Embryo only, upto 8 cell stage

B. Either zygote or early embryo upto 8 cell stage

C. Embryo of 32 cell stage

D. Zygote only

Answer: B



[Watch Video Solution](#)

91. The test-tube baby programme employs which one of the following techniques ?

- A. Zygote intra Fallopian transfer (ZIFT)
- B. Intra uterine insemination (IUI)
- C. Gamete intra Fallopian transfer (GIFT)
- D. All of these

Answer: A



[Watch Video Solution](#)

92. The first case of IVF-ET technique success, was reported by

- A. Louis Joy Brown and Banting Best
- B. Patrick Steptoe and Robert Edwards

C. Robert Steptoe and Gilbert Brown

D. Baylis and Starling Taylor

Answer: B



Watch Video Solution

93. Read the following statements

- (i) Birth control pills are likely to cause cardiovascular problems
- (ii) A woman who substitutes or takes the place of the real mother to nurse the embryo is called surrogate mother
- (iii) Numerous children have been produced by in vitro fertilisation but with some abnormalities
- (iv) Women play a key role in the continuity of the family and human species
- (v) Foetal sex determination test should not be banned

Which of the following pair consists of incorrect statements

A. (i) and (ii)

B. (ii) and (iv)

C. (iii) and (v)

D. None of these

Answer: C



Watch Video Solution

94. Which of the following is ART ?

A. IUDs

B. GIFT

C. ZIFT

D. both (b) and (c)

Answer: D



Watch Video Solution

95. The technique called Gamete Intra Fallopian Transfer (GIFT) is recommended for those females

- A. who cannot produce an ovum
- B. who cannot retain the foetus inside uterus
- C. who cannot provide suitable environment for fertilisation
- D. all of these

Answer: A



Watch Video Solution

96. Which method can be used for women that cannot produce ovum but can provide suitable environment ?

- A. IUD
- B. GIFT
- C. IUI

D. ICSI

Answer: B



Watch Video Solution

97. Which of these can be used to cure infertility in couples where male partner has very low sperm count ?

A. IUD

B. GIFT

C. IUI

D. None of these

Answer: C



Watch Video Solution

98. Read the given statements and select the correct option

Statement 1 : Transfer of an ovum collected from a donor into the Fallopian tube of another female who cannot produce an ovum, is called as GIFT

Statement 2 : Transfer of early embryos with upto 8 blastomeres into the Fallopian tube of the female, is called ZIFT.

- A. Both statement 1 and 2 are correct
- B. Statement 1 is correct but statement 2 is incorrect
- C. Statement 1 is incorrect but statement 2 is correct
- D. Both statement 1 and 2 are incorrect

Answer: A



Watch Video Solution

99. Which of the following is wrongly matched ?

- A. IUI - Semen collected from husband or donor is artificially introduced either into the vagina or into the uterus
- B. GIFT - transfer of embryos with more than 8 blastomeres into the Fallopian tube
- C. ICSI - Sperm directly injected into the ovum
- D. ZIFT - Transfer of embryos upto 8 blastomeres into the Fallopian tube

Answer: B



Watch Video Solution

100. Which of the following statements are correct ?

- (i) India's first test tube baby's name is Kum Harsha.
- (ii) Inability to conceive or produce children even after 2 years of unprotected sexual cohabitation is called infertility

(iii) Surgical method of contraception prevents gamete formation

(iv) MTPs are relatively safe upto 12 weeks of pregnancy.

A. (i),(ii) and (iv)

B. (ii),(iii) and (iv)

C. (iii) and (iv)

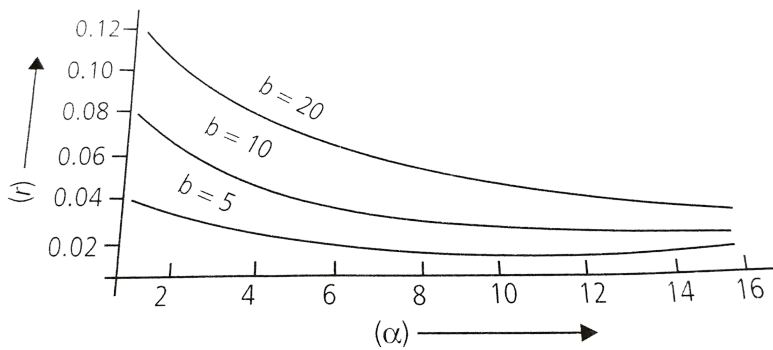
D. (i) and (iii)

Answer: A



Watch Video Solution

101. The graph below shows the relationships of per capita population growth rate (r), fecundity (b) and age at first reproduction (α) in an animal species



What is the most important conclusion to be drawn from the graph ?

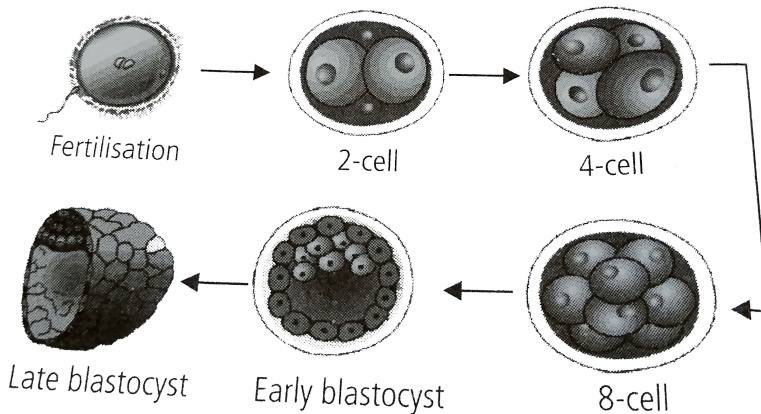
- A. The population growth rate decreases as first reproduction is postponed to a later stage, regardless of fecundity
- B. At any α , the higher the fecundity the higher is the population growth rate achieved
- C. As the age at first reproduction is postponed further, the benefits of increasing fecundity on the population growth rate become progressively negligible
- D. None of these

Answer: A



Watch Video Solution

102. The diagram below represents the development of a human zygote fertilisation to the late blastocyst



Select a correct statement from the following options.

- A. If two sperms penetrate the oocyte membrane at the time of fertilisation, conjoined twins with shared body parts will be born
- B. During the process of in vitro fertilisation with embryo transfer (IVF-ET), the embryo is transferred at the 2-cell stage to the mother's uterus
- C. The outer cells of the early blastocyst will eventually form the foetus

D. In ZIFT, the zygote with 8-cell stage is transferred into the Fallopian tube

Answer: D



Watch Video Solution

103. Artificial insemination means

- A. artificial introduction of sperms of a healthy donor into the vagina
- B. introduction of sperms of a healthy donor directly into the ovary
- C. transfer of sperms of a healthy donor to a test tube containing ova
- D. transfer of sperms of husband to a test tube containing ova.

Answer: A



Watch Video Solution

104. Which one of the following statements is correct regarding sexually transmitted infections (STIs) ?

- A. A person may contact syphilis by sharing milk with one already suffering from the disease
- B. Haemophilia is one of the STIs
- C. Genital herpes and sickle-cell anemia are both STIs
- D. None of these

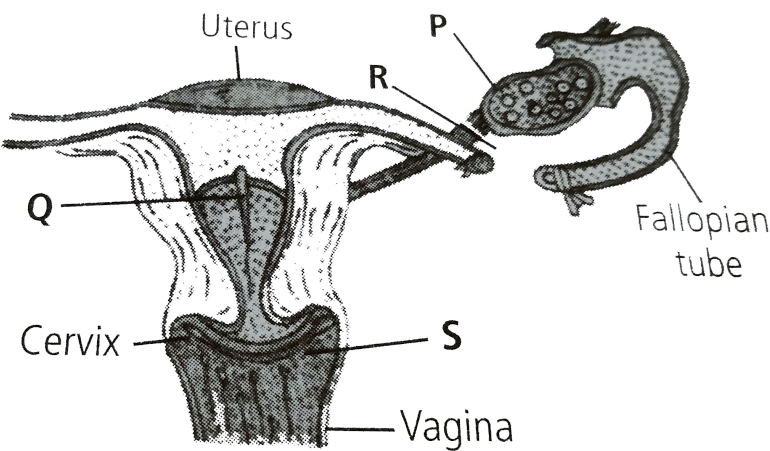
Answer: D



Watch Video Solution

105. The given figure represents locations in human female reproductive system that are affected by different birth control measures. Identify

them and select the correct option.



- | | | | | |
|----|---------------------|---------------------|-------------|-----------|
| | P | Q | R | S |
| A. | Copper T | Birth control pills | Tubectomy | Condom |
| B. | P | Q | R | S |
| | Birth control pills | Copper T | Tubectomy | Condom |
| C. | P | Q | R | S |
| | Birth control pills | Diaphragm | Ovariectomy | Copper T |
| D. | | | | |
| | P | Q | R | S |
| | Copper T | Birth control pills | Ovariectomy | Diaphragm |

Answer: B



Watch Video Solution

106. The method of directly injecting a sperm into ovum in assisted reproductive technology is called

- A. GIFT
- B. ZIFT
- C. ICSI
- D. ET

Answer: C



Watch Video Solution

107. Increased IMR and decreased MMR in a population will

- A. cause rapid increase in growth rate
- B. result in decline in growth rate
- C. not cause significant change in growth rate
- D. result in explosive population

Answer: B



Watch Video Solution

108. Intensity lactating mothers do not generally conceive due to the

- A. suppression of gonadotropins
- B. hypersecretion of gonadotropins
- C. suppression of gametic transport
- D. suppression of fertilisation

Answer: A



Watch Video Solution

109. Sterilisation techniques are generally fool proof methods of contraception with least side effects. Yet, this is the last option for the couples because

(i) It is almost irreversible

(ii) of the misconception that it will reduce sexual urge/drive

(iii) it is a surgical procedure

(iv) of lack of sufficient facilities in many parts of the country

Choose the correct option

A. (i) and (iii)

B. (ii) and (iii)

C. (ii) and (iv)

D. (i),(ii),(iii) and (iv)

Answer: D



Watch Video Solution

110. A national level approach to build up a reproductively healthy society was taken up in our country in

A. 1950 s

B. 1960 s

C. 1980 s

D. 1990 s

Answer: A



Watch Video Solution

111. Emergency contraceptives are effective if used within

A. 72 hrs of coitus

B. 72 hrs of ovulation

C. 72 hrs of menstruation

D. 72 hrs of implantation

Answer: A



Watch Video Solution

112. Choose the right one among the statements given below.

- A. IUDs are generally inserted by the user herself
- B. IUDs increase phagocytosis reaction in the uterus
- C. IUDs suppress gametogenesis
- D. IUDs once inserted need not be replaced

Answer: B



Watch Video Solution

113. Following statements are given regarding MTP. Choose the correct options given below.

- (i) MTPs are generally advised during first trimester
- (ii) MTPs are used as a advised during first trimester
- (iii) MTPs are always surgical
- (iv) MTPs require the assistance of qualified medical personnel.

A. (ii) and (iii)

B. (i) and (iii)

C. (i) and (iv)

D. (i) and (ii)

Answer: C



Watch Video Solution

114. From the sexually transmitted diseases mentioned below, identify the one which does not specifically affect the sex organs.

A. Syphilis

B. AIDS

C. Gonorrhea

D. Genital warts

Answer: B



[Watch Video Solution](#)

115. Condoms are one of the most contraceptives because of the following reasons

- A. These are effective barriers for insemination
- B. They do not interfere with coital act
- C. These help in reducing the risk of STDs
- D. All of the above

Answer: D



[Watch Video Solution](#)

116. Choose the correct statement regarding the ZIFT procedure

- A. Ova collected from a female donor are transferred to the Fallopian tube to facilitate zygote formation

- B. Zygote is collected from a female donor and transferred to the Fallopian tube
- C. Zygote is collected from a female donor and transferred to the utreus
- D. Ova collected from a female donor and transferred to the uterus.

Answer: B



Watch Video Solution

117. The correct surgical procedure as a contraceptive method is

- A. ovariectomy
- B. hysterectomy
- C. vasectomy
- D. castration

Answer: C



[Watch Video Solution](#)

118. Diaphragms are contraceptive devices used by the females. Choose the correct option from the statements given below

- (i) They are introduced into the uterus
- (ii) They are placed to cover the cervical region
- (iii) They act as physical barriers for sperm entry
- (iv) They act as spermicidal agents.

- A. (i) and (ii)
- B. (i) and (iii)
- C. (ii) and (iii)
- D. (iii) and (iv)

Answer: C



[Watch Video Solution](#)

119. Assertion : Introduction of sex education in schools should be encouraged

Reason : Sex education in schools will encourage children to believe in myths about sex related aspects.

- A. If both assertion and reason are true and reason is the correct explanation of assertion
- B. If both assertion and reason are true but reason is not the correct explanation of assertion
- C. If assertion is true but reason is false
- D. If both assertion and reason are false

Answer: C



Watch Video Solution

120. Assertion : Periodic abstinence is a method in which couples avoid from coitus from day 17 to 27 of menstrual cycle

Reason : Periodic abstinence is very effective method and 100 % sure of birth control

- A. If both assertion and reason are true and reason is the correct explanation of assertion
- B. If both assertion and reason are true but reason is not the correct explanation of assertion
- C. If assertion is true but reason is false
- D. If both assertion and reason are false

Answer: D



Watch Video Solution

121. Assertion : As long as the mother breast-feeds the child fully, chances of conception are almost nil

Reason : Lactational amenorrhea method is based on the fact that ovulation does not occur during the period of intense lactation

- A. If both assertion and reason are true and reason is the correct explanation of assertion
- B. If both assertion and reason are true but reason is not the correct explanation of assertion
- C. If assertion is true but reason is false
- D. If both assertion and reason are false

Answer: A



Watch Video Solution

122. Assertion : In barrier methods, ovum and sperms are prevented from physical meetings

Reason : Barrier methods are used during coitus, to prevent the entry of ejaculated semen into the female reproductive tract.

- A. If both assertion and reason are true and reason is the correct explanation of assertion
- B. If both assertion and reason are true but reason is not the correct explanation of assertion
- C. If assertion is true but reason is false
- D. If both assertion and reason are false

Answer: A



Watch Video Solution

123. Assertion : Diaphragms, cervical caps and vaults are barriers made of rubber

Reason : Diaphragms, cervical caps and vaults are inserted into the male reproductive tract during coitus.

A. If both assertion and reason are true and reason is the correct explanation of assertion

B. If both assertion and reason are true but reason is not the correct explanation of assertion

C. If assertion is true but reason is false

D. If both assertion and reason are false

Answer: C



Watch Video Solution

124. Assertion : Pills are very effective contraceptives with few side effects
Reason : Pills inhibit ovulation and implanation as well as retard entry of sperms.

- A. If both assertion and reason are true and reason is the correct explanation of assertion
- B. If both assertion and reason are true but reason is not the correct explanation of assertion
- C. If assertion is true but reason is false
- D. If both assertion and reason are false

Answer: A



View Text Solution

125. Assertion : Saheli, the new oral contraceptive for the females contains a steroidal preparation

Reason : Saheli is taken daily without a break.

- A. If both assertion and reason are true and reason is the correct explanation of assertion
- B. If both assertion and reason are true but reason is not the correct explanation of assertion
- C. If assertion is true but reason is false
- D. If both assertion and reason are false

Answer: D



Watch Video Solution

126. Assertion : Sterilisation is a terminal method used only for males

Reason : Sterilisation is highly effective and its reversibility is very good.

- A. If both assertion and reason are true and reason is the correct explanation of assertion

- B. If both assertion and reason are true but reason is not the correct explanation of assertion
- C. If assertion is true but reason is false
- D. If both assertion and reason are false

Answer: D



Watch Video Solution

127. Assertion : In vasectomy, a small part of the vas deferens is removed or tied up

Reason : In tubectomy, a small part of the Fallopian tube is removed or tied up.

- A. If both assertion and reason are true and reason is the correct explanation of assertion
- B. If both assertion and reason are true but reason is not the correct explanation of assertion

C. If assertion is true but reason is false

D. If both assertion and reason are false

Answer: B



Watch Video Solution

128. Assertion : Second trimester abortion are much more complicated

Reason : After 12 weeks the foetus becomes intimately associated with the maternal tissues.

A. If both assertion and reason are true and reason is the correct explanation of assertion

B. If both assertion and reason are true but reason is not the correct explanation of assertion

C. If assertion is true but reason is false

D. If both assertion and reason are false

Answer: A



Watch Video Solution

129. Assertion : Syphilis, gonorrhoea and AIDS are STIs.

Reason : Syphilis, gonorrhoea and AIDS are transmitted through sexual intercourse.

- A. If both assertion and reason are true and reason is the correct explanation of assertion
- B. If both assertion and reason are true but reason is not the correct explanation of assertion
- C. If assertion is true but reason is false
- D. If both assertion and reason are false

Answer: A



Watch Video Solution

130. Assertion : Infertility is the inability to produce children inspite of unprotected sexual co-habitation

Reason : Infertile couples could have children using assisted reproductive technologies (ART)

- A. If both assertion and reason are true and reason is the correct explanation of assertion
- B. If both assertion and reason are true but reason is not the correct explanation of assertion
- C. If assertion is true but reason is false
- D. If both assertion and reason are false

Answer: B



Watch Video Solution

131. Assertion : IVF is fertilisation outside the body of woman

Reason : The zygote upto 8 blastomeres could be transferred into the Fallopian tube

- A. If both assertion and reason are true and reason is the correct explanation of assertion
- B. If both assertion and reason are true but reason is not the correct explanation of assertion
- C. If assertion is true but reason is false
- D. If both assertion and reason are false

Answer: B



Watch Video Solution

132. Assertion : IUT is transfer of embryo with more than 8 blastomeres into the Fallopian tubes

Reason : IUT is a very popular method of forming embryos in vivo.

- A. If both assertion and reason are true and reason is the correct explanation of assertion
- B. If both assertion and reason are true but reason is not the correct explanation of assertion
- C. If assertion is true but reason is false
- D. If both assertion and reason are false

Answer: D



Watch Video Solution

133. Assertion : Intra cytoplasmic sperm injection (ICSI) is a procedure to form a embryo in vitro

Reason : In ICSI, sperm is directly injected into the ovum.

- A. If both assertion and reason are true and reason is the correct explanation of assertion
- B. If both assertion and reason are true but reason is not the correct explanation of assertion
- C. If assertion is true but reason is false
- D. If both assertion and reason are false

Answer: B



Watch Video Solution