



CHEMISTRY

BOOKS - NARENDER AVASTHI CHEMISTRY (ENGLISH)

THERMODYNAMICS

Level 1

1. Out of molar entropy (I), specific volume (II), heat capacity (III), volume (IV), extensive properties are :

A. I, II

B. I, II, IV

C. II, III

D. III, IV

Answer: D



[Watch Video Solution](#)

2. Out of internal energy (I), boiling point (II), pH (III) and E.M.F. of the cell (IV) intensive properties are :

A. I, II

B. II, III, IV

C. I, III, IV

D. All of these

Answer: B



[Watch Video Solution](#)

3. Thermodynamic equilibrium involves

A. chemical equilibrium

B. mechanical equilibrium

C. thermal equilibrium

D. all the above simultaneously

Answer: D



[Watch Video Solution](#)

4. Which has maximum internal energy at $290K$?

A. Neon gas

B. Nitrogen gas

C. Ozone gas

D. Equal for all

Answer: C



[Watch Video Solution](#)

5. A 10g piece of iron ($C = 0.45\text{J/g}^\circ\text{C}$) at 100°C is dropped into 25g of water ($C = 4.2\text{J/g}^\circ\text{C}$) at 27°C . Find temperature of the iron and water system at thermal equilibrium .

A. 30°C

B. 33°C

C. 40°C

D. None of these

Answer: A



Watch Video Solution

6. When freezing of a liquid takes place in a system it:

A. may have $q > 0$ or $q < 0$ depending on the liquid

B. is represented by $q > 0$

C. is represented by $q < 0$

D. has $q = 0$

Answer: C



Watch Video Solution

7. Mechanical work is specially important in systems that contain

A. gas-liquid

B. liquid-liquid

C. solid-solid

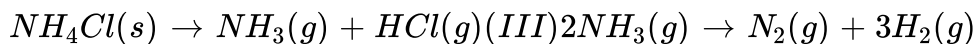
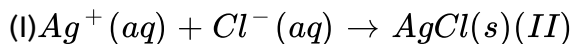
D. amalgam

Answer: A



Watch Video Solution

8. Determine which of the following reactions taking place at constant pressure represents system that do work on the surrounding environment



A. I

B. III

C. II and III

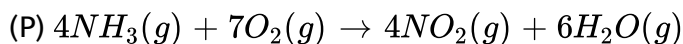
D. I and II

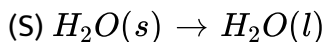
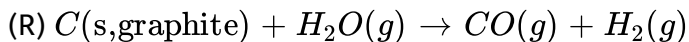
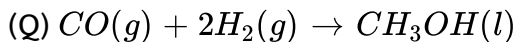
Answer: C



[Watch Video Solution](#)

9. Determine which of the following reactions at constant pressure represent surrounding that do work on the system environment :





A. III, IV

B. II and III

C. II, IV

D. I and II, IV

Answer: D



Watch Video Solution

10. A sample of liquid in a thermally insulated constant (a calorimetre) is stirred for 2 hr. by a mechanical linkage to motor in the surrounding ,for this process :

A. $w < 0, q = 0, \Delta U = 0$

B. $w > 0, q > 0, \Delta U > 0$

C. $w < 0, q > 0, \Delta U = 0$

D. $w > 0, q = 0, \Delta U > 0$

Answer: D

 [Watch Video Solution](#)

11. A system undergoes a process in which $\Delta U = +300J$ while absorbing 400 J of heat energy and undergoing an expansion against 0.5 bar. What is the change in the volume (in L)?

A. 4

B. 5

C. 2

D. 3

Answer: C

 [Watch Video Solution](#)

12. An ideal gas expand against a constant external pressure at 2.0 atmosphere from 20 litre to 40 litre and absorb 10kJ of energy from surrounding . What is the change in internal energy of the system ?

- A. 4052 J
- B. 5948 J
- C. 14052 J
- D. 9940 J

Answer: B

 [Watch Video Solution](#)

13. One mole of an ideal gas at 25°C expands in volume from 1.0 L to 4.0 L at constant temperature. What work (in J) is done if the gas expands against vacuum ($P_{\text{external}} = 0$)?

- A. -4.0×10^2

B. -3.0×10^2

C. -1.0×10^2

D. Zero

Answer: D

 [Watch Video Solution](#)

14. At 25°C , a 0.01 mole sample of a gas is compressed from 4.0 L to 1.0 L at constant temperature. What is the work done for this process if the external pressure is 4.0 bar?

A. $1.6 \times 10^3\text{ J}$

B. $8.0 \times 10^2\text{ J}$

C. $4.0 \times 10^2\text{ J}$

D. $1.2 \times 10^3\text{ J}$

Answer: D

[Watch Video Solution](#)

15. Calculate the work done (in J) when 4.5 g of H_2O_2 reacts against a pressure of 1.0 atm at $25^\circ C$

$$2H_2O_2(l) \rightarrow O_2(g) + 2H_2O(l)$$

A. -1.63×10^2

B. 4.5×10^2

C. 3.2×10^2

D. -6.1×10^2

Answer: A

[Watch Video Solution](#)

16. 2 mole of zinc is dissolved in HCl at $25^\circ C$. The work done in open vessel is :

A. $-2.477kJ$

B. $-4.955kJ$

C. $0.0489kJ$

D. None

Answer: B

 [Watch Video Solution](#)

17. Temperature of 1 mole of a gas is increased by $2^{\circ}C$ at constant pressure. Work done is :

A. $-R$

B. $-2R$

C. $-R/2$

D. $-3R$

Answer: B

 [Watch Video Solution](#)

18. A sample of an ideal gas is expanded $1m^3$ to $3m^3$ in a reversible process for which $P = KV^2$, with $K = 6\text{bar}/m^6$. What is work done by the gas (in kJ) ?

A. 5200 KJ

B. 15600 kJ

C. 52 kJ

D. 5267 .6 kJ

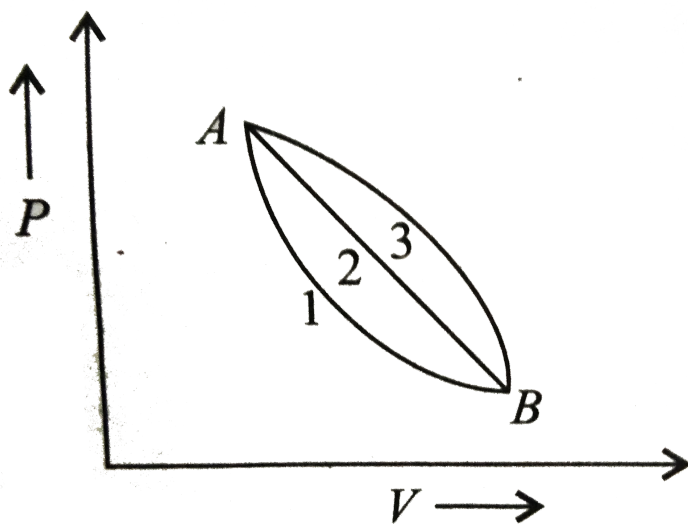
Answer: A



[Watch Video Solution](#)

19. A given mass of gas expands from state A to state B by three paths 1, 2, and 3 as shown in the figure below. If w_1 , w_2 and w_3 , respectively, be

the work done by the gas along three paths, then



A. $w_1 > w_2 > w_3$

B. $w_1 < w_2 < w_3$

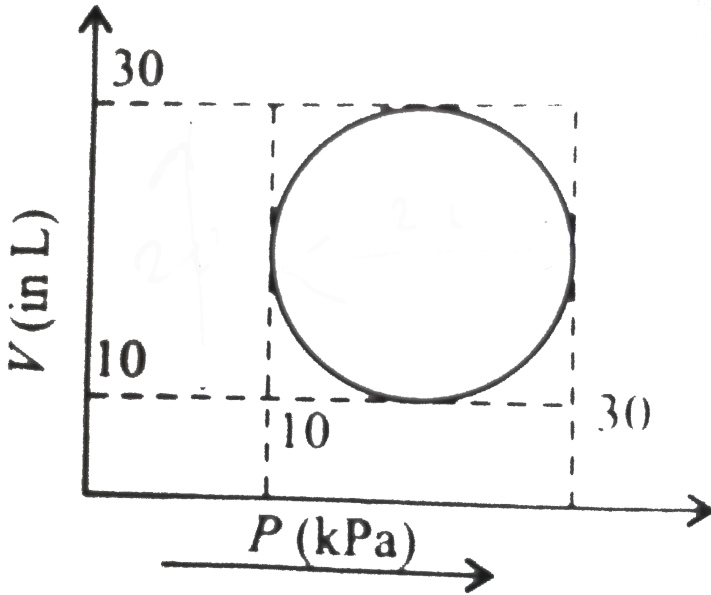
C. $w_1 = w_2 = w_3$

D. $w_2 < w_3 < w_1$

Answer: B

 [Watch Video Solution](#)

20. Heat energy absorbed by a system in going through a cyclic process shown in figure is

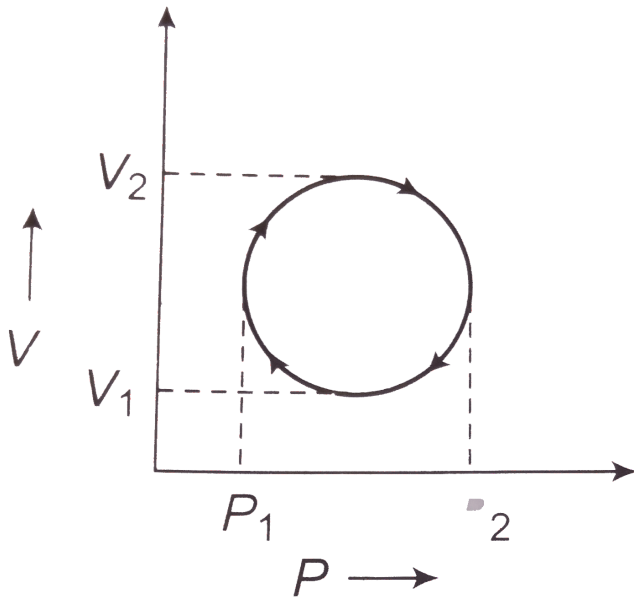


- A. $10^7 \pi J$
- B. $10^6 \pi J$
- C. $10^2 \pi J$
- D. $10^4 \pi J$

Answer: C



Watch Video Solution



21.

In the cyclic process shown in the $V - P$ diagram the magnitude of the work is done is

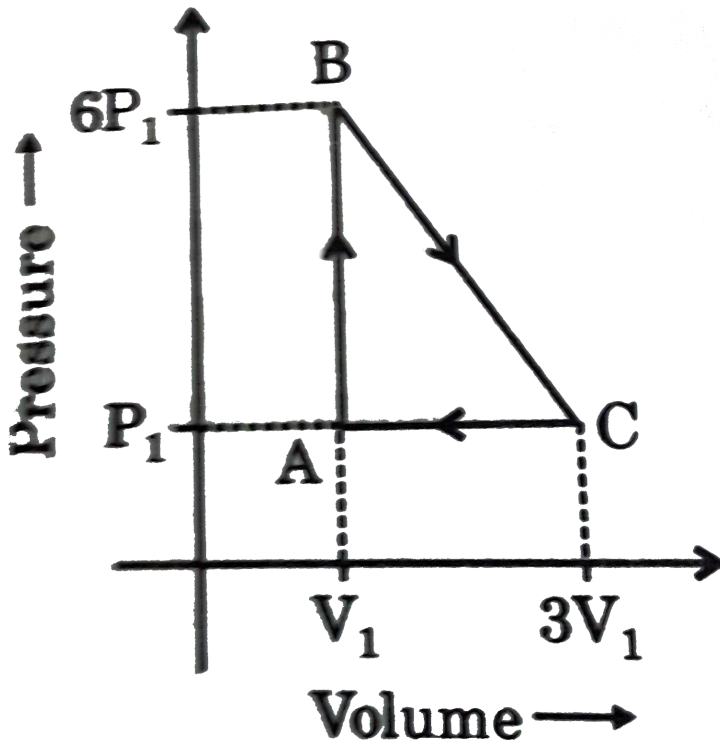
- A. $\pi \left(\frac{P_2 - P_1}{2} \right)^2$
- B. $\pi \left(\frac{V_2 - V_1}{2} \right)^2$
- C. $\frac{\pi}{4} (P_2 - P_1)(V_2 - V_1)$
- D. $\pi (V_2 - V_1)^2$

Answer: C

 Watch Video Solution

22. An ideal gas is taken around the cycle ABCA as shown in P-V diagram.

The net work done by the gas during the cycle is equal to :



A. $12P_1V_1$

B. $6P_1V_1$

C. $5P_1V_1$

D. P_1V_1

Answer: C



Watch Video Solution

23. An ideal gas is at pressure P and temperature T in a box, which is kept in vacuum with in a large container. The wall of the box is punctured.

What happens as the gas occupies entire container?

(a) It's temperature falls

(b) Its temperature rises

(c) Its temperature remains the same

(d) Unpredictable

A. It's temperature falls

B. Its temperature rises

C. Its temperature remains the same

D. Unpredictable

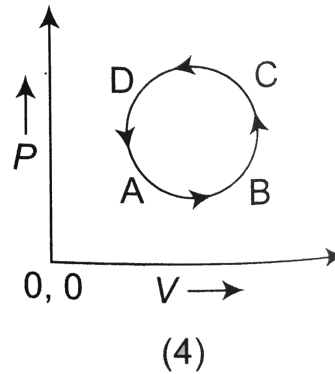
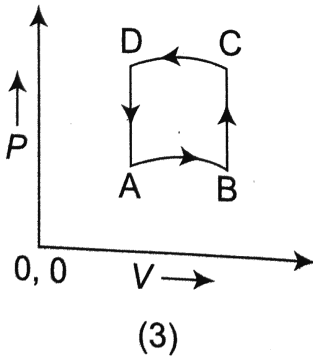
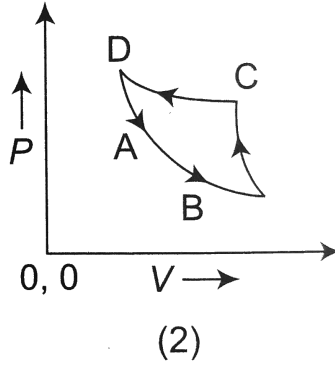
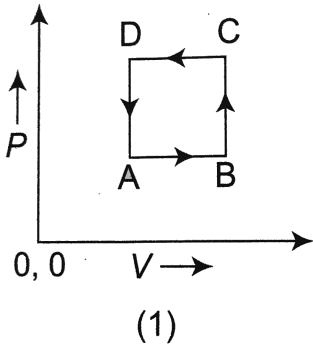
Answer: C



Watch Video Solution

24. In following figs. Variation of volume by change of pressure is shown in Fig. A gas is taken along the path $ABCD A$. The change in internal

energy of the gas will be:



- A. Positive in all the cases (1) to (4)
- B. Positive in cases (1), (2), (3) but zero in case (4)
- C. Negative in cases (1), (2), (3) but zero in case (4)
- D. Zero in all the cases

Answer: D



Watch Video Solution

25. If the door of a refrigerator is kept open, then which of the following is true

A. gets cooled

B. gets heated

C. neither gets cooled nor gets heated

D. gets cooled or heated depending on the initial temperature of the room

Answer: B



Watch Video Solution

26. The temperature of an ideal gas increases in an:

A. adiabatic expansion

B. isothermal expansion

C. adiabatic compression

D. isothermal compression

Answer: C



[Watch Video Solution](#)

27. For two mole of an ideal gas, the correct relation is :

A. $C_v - C_p = R$

B. $C_p - C_v = 2R$

C. $C_p - C_v = R$

D. $C_v - C_p = 2R$

Answer: B



[Watch Video Solution](#)

28. Which of the following expressions is true for an ideal gas ?

A. $\left(\frac{\partial V}{\partial T}\right)_P = 0$

B. $\left(\frac{\partial P}{\partial T}\right)_V = 0$

C. $\left(\frac{\partial U}{\partial P}\right)_T = 0$

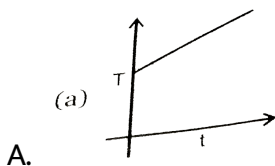
D. $\left(\frac{\partial U}{\partial T}\right)_T = 0$

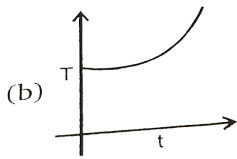
Answer: C



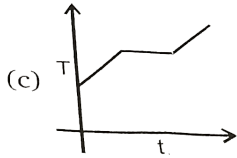
Watch Video Solution

29. If liquefied oxygen at 1 atmospheric pressure is heated from 50K to 300k by supplying heat at constant rate. The graph of temperature vs time will be

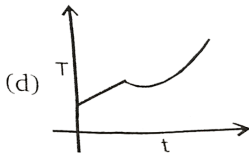




B.



C.



D.

Answer: C



Watch Video Solution

30. If w_1 , w_2 , w_3 and w_4 for an ideal gas are magnitude of work done in isothermal, adiabatic, isobaric and isochoric reversible expansion processes, the correct order will be :

A. $w_1 > w_2 > w_3 > w_4$

B. $w_3 > w_2 > w_1 > w_4$

C. $w_3 > w_2 > w_4 > w_1$

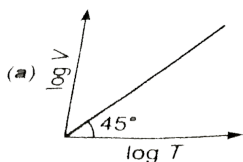
D. $w_3 > w_1 > w_2 > w_4$

Answer: D

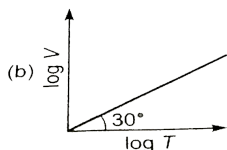
 **Watch Video Solution**

31. For a closed container containing 100 mol of an ideal gas fitted with movable, frictionless, weightless piston operating such that pressure of gas remain constant at 8.21 atm, which graph represents correct variation of $\log V$ vs $\log T$ where V is in litre and T is in Kelvin ?

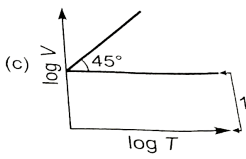
$$\left(R = 0.0821 \frac{\text{atmL}}{\text{molK}} \right)$$



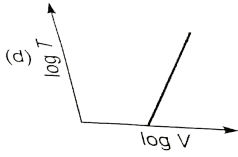
A.



B.



C.



D.

Answer: A



Watch Video Solution

32. A gas expands against a variable pressure given by $P = \frac{20}{V}$ (where P in atm and V in L). During expansion from volume of 1 litre to 10 litre, the gas undergoes a change in internal energy of 400 J. How much heat is absorbed by the gas during expansion?

A. 46 J

B. 4660 J

C. 5065.8 J

D. 4260 J

Answer: C



Watch Video Solution

33. 2 mole of an ideal gas at $27^{\circ}C$ expands isothermally and reversibly from a volume of 4 litre to 40 litre. The work done (in kJ) by the gas is :

A. $w = - 28.72kJ$

B. $w = - 11.488kJ$

C. $w = - 5.736kJ$

D. $w = - 4.988kJ$

Answer: B



Watch Video Solution

34. 10 mole of ideal gas expand isothermally and reversibly from a pressure of 10atm to 1atm at 300K . What is the largest mass which can be lifted through a height of 100 meter?

A. 31842 kg

B. 58.55 kg

C. 342.58 kg

D. None of these

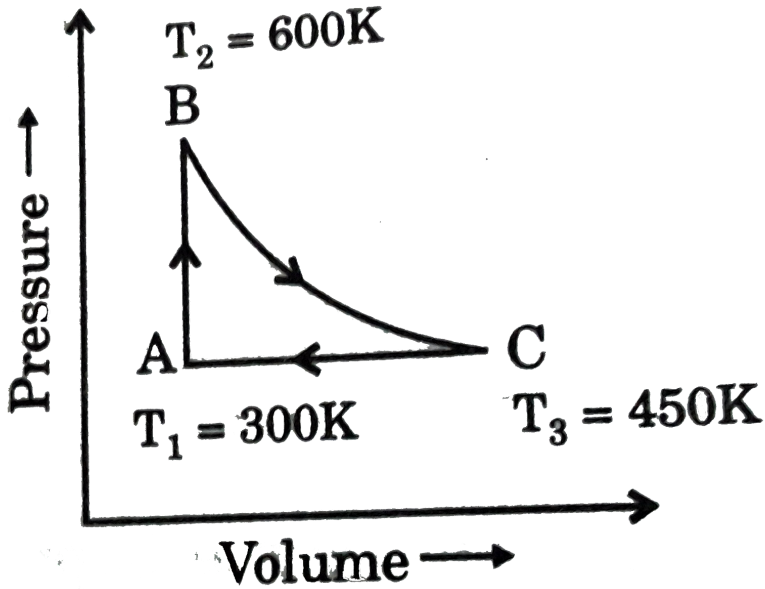
Answer: B



[Watch Video Solution](#)

35. A heat engine carries one mole of an ideal monoatomic gas around the cycle as shown in the figure, the amount of heat added in the process

AB and heat removed in the process CA are :



- A. $q_{AB} = 450R$ and $q_{CA} = -450R$
- B. $q_{AB} = 450R$ and $q_{CA} = -225R$
- C. $q_{AB} = 450R$ and $q_{CA} = -375R$
- D. $q_{AB} = 375R$ and $q_{CA} = -450R$

Answer: C



Watch Video Solution

36. What is the final temperature of 0.10 mole monoatomic ideal gas that performs 75cal of work adiabatically, if the initial temperature is 227°C (use $R = 2\text{cal}/\text{K} - \text{mol}$)

- A. 250 K
- B. 300 K
- C. 350 K
- D. 750 K

Answer: A



[Watch Video Solution](#)

37. The work done by 1 mole of ideal gas during an adiabatic process is (are) given by :

- A. $\frac{P_2V_2 - P_1V_1}{\gamma - 1}$
- B. $\frac{nR(T_1 - T_2)}{\gamma - 1}$

C. $\frac{P_2V_2 - P_1V_1}{\gamma}$

D. None of these

Answer: A



[Watch Video Solution](#)

38. During an adiabatic process, the pressure of a gas is found to be proportional to the cube of its absolute temperature. The ratio C_P / C_V for the gas is

A. $\frac{3}{2}$

B. $\frac{5}{3}$

C. $\frac{7}{2}$

D. $\frac{4}{3}$

Answer: A



[Watch Video Solution](#)

39. A gas expands adiabatically at constant pressure such that

$T \propto V^{-1/2}$ The value of $\gamma(C_{p,m}/C_{v,m})$ of the gas will be :

A. 1.3

B. 1.5

C. 1.7

D. 2

Answer: B



[Watch Video Solution](#)

40. For a reversible adiabatic ideal gas expansion $\frac{dp}{p}$ is equal to

A. $\gamma \frac{dV}{V}$

B. $-\gamma \frac{dV}{V}$

C. $\left(\frac{\gamma}{\gamma - 1}\right) \frac{dV}{V}$

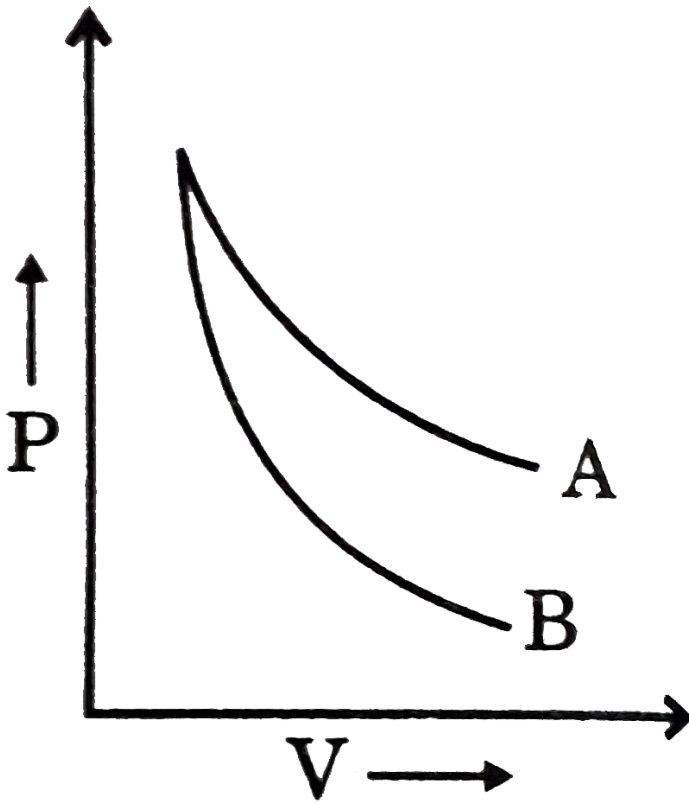
D. $\frac{dV}{V}$

Answer: B



Watch Video Solution

41. P-V plot for two gases (assuming ideal) during adiabatic processes are given in the figure. Plot A and plot B should correspond respectively to :



A. He and H_2

B. H_2 and He

C. He and Ne

D. H_2 and Cl_2

Answer: B

 [Watch Video Solution](#)

42. Calculate the final temperature of a monoatomic ideal gas that is compressed reversible and adiabatically from $16L$ to $2L$ at $300K$:

- A. 600 K
- B. 1044.6 K
- C. 1200 K
- D. 2400 K

Answer: C

 [Watch Video Solution](#)

43. 5 mole of an ideal gas expand isothermally and irreversibly from a pressure of 10 atm to 1 atm against a constant external pressure of 1 atm.

w_{irr} at 300 K is :

(a) $-15.921kJ$

(b) -11.224kJ

(c) -110.83kJ

(d) None of these

A. -15.921kJ

B. -11.224kJ

C. -110.83kJ

D. None of these

Answer: B



[Watch Video Solution](#)

44. With what minimum pressure (in kPa), a given volume of an ideal gas ($C_{p,m} = 7/2R$) originally at 400 K and 100 kPa pressure can be compressed irreversibly adiabatically in order to raise its temperature to 600 K :

A. 362.5 kPa

B. 275 kPa

C. 437.5 kPa

D. 550 kPa

Answer: B



[Watch Video Solution](#)

45. The work done in adiabatic compression of 2 mole of an ideal monoatomic gas by constant external pressure of $2atm$ starting from initial pressure of $1atm$ and initial temperature of $30K$ ($R = 2cal / mol\text{-degree}$)

A. 36 cal

B. 72 cal

C. 80 cal

D. 100 cal

Answer: B

 [Watch Video Solution](#)

46. One mole of an ideal gas $\left(C_{v,m} = \frac{5}{2}R\right)$ at 300 K and 5 atm is expanded adiabatically to a final pressure of 2 atm against a constant pressure of 2 atm. Final temperature of the gas is :

- A. 270 K
- B. 273 K
- C. 248.5 K
- D. 200 K

Answer: C

 [Watch Video Solution](#)

47. 10 litre of a non linear polyatomic ideal gas at $127^{\circ}C$ and 2 atm pressure is suddenly released to 1 atm pressure and the gas expanded adiabatically against constant external pressure. The final temperature and volume of the gas respectively are.

(a) $T=350K, V = 17.5L$

(b) $T = 300 K ,V = 15 L$

(c) $T = 250 K, V = 12.5 L$

(d) None of these

A. $T=350K, V = 17.5L$

B. $T = 300 K ,V = 15 L$

C. $T = 250 K, V = 12.5 L$

D. None of these

Answer: A



Watch Video Solution

48. Calculate average molar heat capacity at constant volume of gaseous mixture contained 2 mole of each of two ideal gases A ($C_{v,m} = \frac{3}{2}R$) and B ($C_{v,m} = \frac{5}{2}R$):

A. R

B. $2R$

C. $3R$

D. $8R$

Answer: B



[Watch Video Solution](#)

49. 0.5 mole each of two ideal gases A ($C_{v,m} = \frac{5}{2}R$) and B ($C_{v,m} = 3R$) are taken in a container and expanded reversibly and adiabatically, during this process temperature of gaseous mixture decreased from 350 K to 250 K. Find ΔH (in cal/mol) for the process :

A. $-100R$

B. $-137.5R$

C. $-375R$

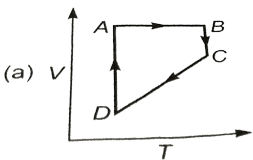
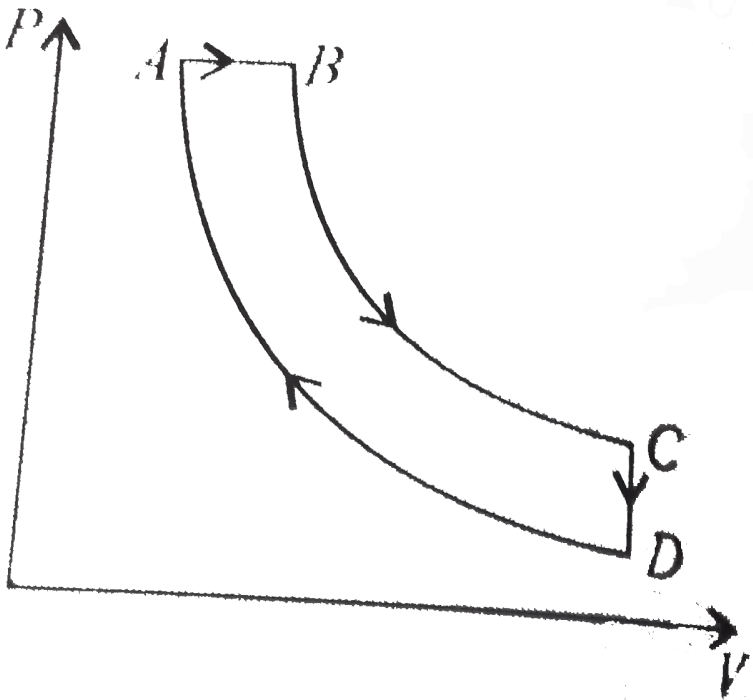
D. None of these

Answer: C

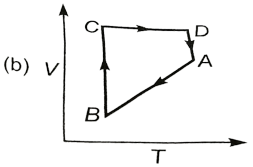


Watch Video Solution

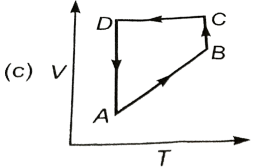
50. A cyclic process $ABCD$ is shown in the $P - V$ diagram. Which of the following curves represents the same process?



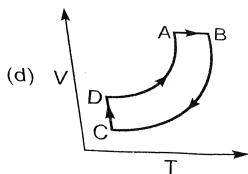
A.



B.



C.



D.

Answer: C

 [Watch Video Solution](#)

51. 36 mL of pure water takes 100 sec to evaporate from a vessel when a heater of 806 watt is used. The $\Delta H_{\text{vaporisation}}$ of H_2O is (density of water = 1g/cc)

(a) 40.3kJ/mol

(b) 43.2kJ/mol

(c) 4.03kJ/mol

(d) None of these

A. 40.3kJ/mol

B. 43.2kJ/mol

C. 4.03kJ/mol

D. None of these

Answer: A

 [Watch Video Solution](#)

52. For the reaction : $PCl_5(g) \rightarrow PCl_3(g) + Cl_2(g)$:

A. $\Delta H = \Delta U$

B. $\Delta H > \Delta U$

C. $\Delta < \Delta U$

D. None of the above

Answer: B

 [Watch Video Solution](#)

53. Consider the reaction at 300 K



If 2 mole of H_2 completely react with 2 mole of Cl_2 to form HCl . What is ΔU° for this reaction ?

A. 0

B. $-185kJ$

C. $-370 kJ$

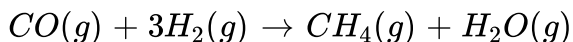
D. None of these

Answer: D



Watch Video Solution

54. Which of the indicated relationship is correct for the following exothermic reaction carried out at constant pressure?



A. $\Delta U = \Delta H$

B. $\Delta U > \Delta H$

C. $w < 0$

D. $q > 0$

Answer: B

 [Watch Video Solution](#)

55. One mole of an ideal gas undergoes a change of state (2.0 atm, 3.0 L) to (2.0 atm, 7.0 L) with a change in internal energy (ΔU) = 30 L-atm. The change in enthalpy (ΔH) of the process in L-atm :

A. 22

B. 38

C. 25

D. None of these

Answer: B

 [Watch Video Solution](#)

56. What is the change internal energy when a gas contracts from 377 mL to 177 mL under a constant pressure of 1520 torr, while at the same time being cooled by removing 124 J heat ?

[Take: $(1\text{Latm}) = 100\text{J}$]

- A. 40.52 J
- B. -83.48J
- C. -248J
- D. None of these

Answer: B

 [Watch Video Solution](#)

57. For the real gases reaction,

$2CO(g) + O_2(g) \rightarrow 2CO_2(g)$, $\Delta H = -560kJ$. In 10 litre rigid vessel at 500 K the initial pressure is 70 bar and after the reaction it becomes 40 bar. The change in internal energy is :

A. $-557kJ$

B. $-530kJ$

C. $-563kJ$

D. None of these

Answer: B



[Watch Video Solution](#)

58. One mole of non – ideal gas undergoes a change of state $(1.0atm, 3.0L, 200K)$ to $(4.0atm, 5.0L, 250K)$ with a change in internal energy $(\Delta U) = 40L - atm$. The change in enthalpy of the process in $L - atm$,

A. 43

B. 57

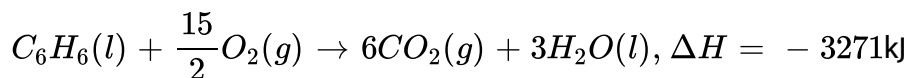
C. 42

D. None of these

Answer: B

 [Watch Video Solution](#)

59. Consider the reacting at $300K$



What is ΔU for the combustion of 1.5 mole of benzene at $27^\circ C$?

A. -3267.25kJ

B. -4900.88kJ

C. -4906.5kJ

D. -3274.75kJ

Answer: B

 [Watch Video Solution](#)

60. For the reaction , $FeCO_3(s) \rightarrow FeO(s) + CO_2(g)$, $\Delta H = 82.8kJ$ at $25^\circ C$, what is (ΔE or ΔU) at $25^\circ C$?

- A. 82.8 kj
- B. 80.32 kj
- C. $- 2394.77kJ$
- D. $- 3274.75kJ$

Answer: B

 [Watch Video Solution](#)

61. At 5×10^4 bar pressure density of diamond and graphite are $3g/cc$ and $2g/cc$ respectively, at certain temperature ' T '. Find the value of

$\Delta U - \Delta H$ for the conversion of 1 mole of graphite to 1 mole of diamond at temperature ' T ' :

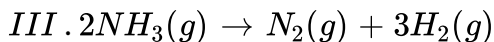
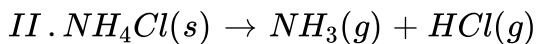
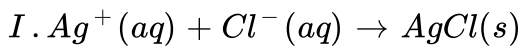
- A. 100 kJ/mol
- B. 50 kJ/mol
- C. -100kJ/mol
- D. None of these

Answer: A



[Watch Video Solution](#)

62. Predict which of the following reaction (s) has a positive entropy change?



- A. I and II

B. III

C. II and III

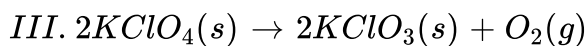
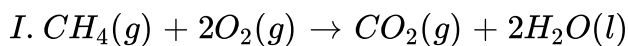
D. II

Answer: c



Watch Video Solution

63. Predict which of the following reaction(s) has a negative entropy change?



A. III

B. II

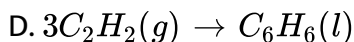
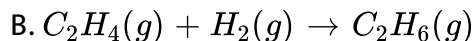
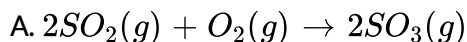
C. I and II

D. I

Answer: C

 [Watch Video Solution](#)

64. Which of the following reactions is associated with the most negative change in entropy?



Answer: D

 [Watch Video Solution](#)

65. When two moles of an ideal gas $\left(C_{p.m.} = \frac{5}{2}R\right)$ heated from 300K to 600K at constant pressure, the change in entropy of gas (ΔS) is:

A. $\frac{3}{2}R \ln 2$

B. $-\frac{3}{2}R \ln 2$

C. $5R \ln 2$

D. $\frac{5}{2}R \ln 2$

Answer: C



Watch Video Solution

66. Which of the following expression for entropy change of an irreversible process ?

A. $dS > \frac{dq}{T}$

B. $dS = \frac{dq}{T}$

C. $dS < \frac{dq}{T}$

D. $dS = \frac{dU}{T}$

Answer: A

 [Watch Video Solution](#)

67. Which of the following expression is known as Clausius inequality ?

A. $\oint \frac{dq}{T} \leq 0$

B. $\oint \frac{ds}{T} = 0$

C. $\oint \frac{T}{dq} \leq 0$

D. $\oint \frac{dq}{T} \geq 0$

Answer: A

 [Watch Video Solution](#)

68. In a previous problem, calculate ΔS_{gas} If process is carried out at constant volume:

A. $5R \ln 2$

B. $\frac{3}{2}R \ln 2$

C. $3R \ln 2$

D. $-3R \ln 2$

Answer: C



Watch Video Solution

69. If one mole of an ideal gas ($C_{p.m.} = \frac{5}{2}R$) is expanded isothermally at 300K until its volume is tripled, then change in entropy of gas is:

A. zero

B. infinity

C. $\frac{5}{2}R \ln 3$

D. $R \ln 3$

Answer: D



Watch Video Solution

70. If one mole of an ideal gas $C_p = \frac{5}{2}R$ is expanded isothermally at 300 K until its volume is tripled, if expansion is carried out freely ($P_{ext} = 0$), then ΔS is:

- A. zero
- B. infinity
- C. $R \ln 3$
- D. None

Answer: C



[Watch Video Solution](#)

71. When one mole of an ideal gas is compressed to half of its initial volume and simultaneously heated to twice its initial temperature, the change in entropy of gas (ΔS) is:

- A. $C_{p,m} \ln 2$

B. $C_{v,m} \ln 2$

C. $R \ln 2$

D. $(C_{v,m} - R) \ln 2$

Answer: D

 [Watch Video Solution](#)

72. What is the change in entropy when 2.5 mole of water is heated from $27^\circ C$ to $87^\circ C$?

Assume that the heat capacity is constant

$$(C_p)_m(H_2O) = 4.2 J/g = k, \ln(1.2) = 0.18)$$

A. 16.6 J/K

B. 9 J/K

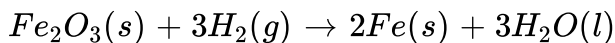
C. 34.02 J/K

D. 1.89 J/K

Answer: C

 [Watch Video Solution](#)

73. Calculate standard entropy change in the reaction



Given : $S_{m0}(Fe_2O_3, S) = 87.4$, $S_m^\circ(Fe, S) = 27.3$

$S_m^\circ(H_2, g) = 130.7$, $S_m^\circ(H_2O, l) = 69.9 JK^{-1}mol^{-1}$

A. $-212.5 JK^{-1}mol^{-1}$

B. $-215.2 JK^{-1}mol^{-1}$

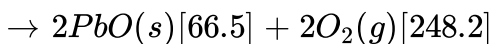
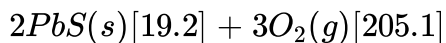
C. $-120.9 JK^{-1}mol^{-1}$

D. None of these

Answer: B

 [Watch Video Solution](#)

74. Calculate the entropy change ($J/molK$) of the given reaction. The molar entropies ($J/K - mol$) are given in brackets after each substance:



A. -113.5

B. -168.3

C. $+72.5$

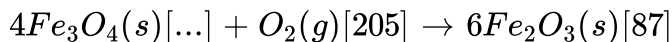
D. -149.2

Answer: B

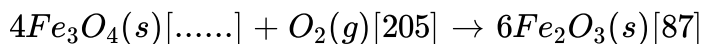


[Watch Video Solution](#)

75. Given $\Delta_r S^\circ = -266$ and the listed [S_m° value] Calculate S° for $Fe_3O_4(s)$



A. calculate S° for $Fe_3O_4(s)$:



B. + 111.1

C. + 122.4

D. 145.75

Answer: C

 [Watch Video Solution](#)

76. The entropy change for a phase transformation is :

A. $\frac{\Delta U}{\gamma + dT}$

B. $\frac{\Delta T}{\Delta H}$

C. $\frac{\Delta H}{T}$

D. $\frac{\Delta H + \Delta G}{T}$

Answer: C



Watch Video Solution

77. What is the melting point of benzene if $\Delta H_{\text{fusion}} = 9.95 \text{ kJ/mol}$ and

$$\Delta S_{\text{fusion}} = 35.7 \text{ J/K} - \text{mol}$$

A. 278.7°C

B. 278.7°K

C. 300 K

D. 298 K

Answer: B



Watch Video Solution

78. ΔS for freezing of 10 g of $\text{H}_2\text{O}(l)$ (enthalpy of fusion is 80 cal/g) at 0°C and 1 atm is :

A. 12.25 J/K

B. $-0.244J/K$

C. $-2.93J/K$

D. $-12.25J/K$

Answer: D

 [Watch Video Solution](#)

79. Chloroform has $\Delta H_{\text{vaporization}} = 29.2kJ/\text{mol}$ and boils at $61.2^\circ C$.

What is the value of $\Delta S_{\text{(vaporization)}}$ for chloroform ?

A. $87.3J/\text{mol} - K$

B. $477.1J/\text{mol} - K$

C. $-87.3J/\text{mol} - K$

D. $-477.1J/\text{mol} - K$

Answer: A

 [Watch Video Solution](#)

80. The entropy of vaporisation of benzene is $85JK^{-1}mol^{-1}$. When 117g benzene vaporizes at its normal boiling point, the entropy change in surrounding is:

A. $-85JK^{-1}$

B. $-85 \times 1.5JK^{-1}$

C. $85 \times 1.5JK^{-1}$

D. None of these

Answer: B



Watch Video Solution

81. Identify the correct statement regarding entropy

A. At absolute zero temperature, the entropy of perfectly crystalline substances is $+ve$

B. At absolute zero temperature entropy of perfectly crystalline substance is taken to be zero

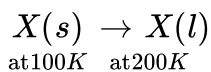
C. At $0^{\circ}C$ the entropy of a perfectly crystalline substance is taken to be zero

D. At absolute zero temperature, the entropy of all crystalline substance is taken to be zero

Answer: B

 [Watch Video Solution](#)

82. Calculate ΔS for following process :



Given : Melting point of

$$X_s = 100K, \Delta H_{\text{Fusion}} = 20kJ/\text{mol}, C_{p.m}(X, l) = 10J/\text{mol} \cdot K$$

A. $26.93J/K$

B. $206.93J/K$

C. $203J / K$

D. $206.93kJ / K$

Answer: B

 [Watch Video Solution](#)

83. For a perfectly crystalline solid $C_{p.m.} = aT^3$, where a is constant. If

$C_{p.m.}$ is $0.42J/K\text{-"mol"}$ at $10K$, molar entropy at $10K$ is:

A. $0.42 J/k mol$

B. $0.14 J/K mol$

C. $1.12 J/K mol$

D. zero

Answer: C

 [Watch Video Solution](#)

84. Consider the following spontaneous reaction $3X_2(g) \rightarrow 2X_3(g)$.

What are the sign of ΔH , ΔS and ΔG for the reaction ?

A. +ve, +ve, +ve

B. +ve, -ve, -ve

C. -ve, +ve, -ve

D. -ve, -ve, -ve

Answer: D



Watch Video Solution

85. For the reaction $2H(g) \rightarrow H_2(g)$, the sign of ΔH and ΔS respectively are :

A. +, -

B. +, +

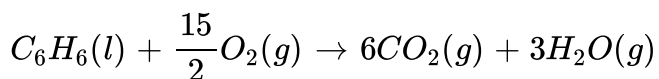
C. -, +

D. -, -

Answer: D

 [Watch Video Solution](#)

86. Consider the following reaction.



signs of ΔH , ΔS and ΔG for the above reaction will be

A. +, -, +

B. -, +, +

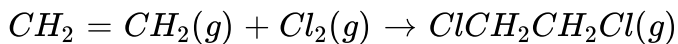
C. -, +, -

D. +, +, -

Answer: B

 [Watch Video Solution](#)

87. Consider the following reaction at temperature T :



$$\Delta_r H^\circ = -217.5 \text{ kJ/mol}, \quad \Delta_r S^\circ = -233.9 \text{ J/K - mol}$$

Reaction is supported by :

- A. entropy enthalpy
- B. enthalpy
- C. both (a) & (b)
- D. neither

Answer: B

 [Watch Video Solution](#)

88. For a process to be spontaneous, ΔG must be..... .

- A. $(\Delta G)_{\text{system}}$ must be negative
- B. $(\Delta G)_{\text{system}}$ must be positive

C. $(\Delta S)_{\text{system}}$ must be positive

D. $(\Delta S)_{\text{system}}$ must be negative

Answer: A

 [Watch Video Solution](#)

89. For a reaction to occur spontaneously

A. ΔS must be negative

B. $(-\Delta H + T\Delta S)$ must be positive

C. $\Delta H + T\Delta S$ must be negative

D. ΔH must be negative

Answer: B

 [Watch Video Solution](#)

90. Which of the following conditions regarding a chemical process ensures its spontaneity at all temperature?

A. $\Delta H > 0, \Delta S < 0$

B. $\Delta H < 0, \Delta S > 0$

C. $\Delta H < 0, \Delta S < 0$

D. $\Delta H > 0, \Delta S < 0$

Answer: B



Watch Video Solution

91. The free energy change $\Delta G = 0$, when

A. the system is at equilibrium

B. catalyst is added

C. reactants are initially mixed thoroughly

D. the reactants are completely consumed

Answer: A

 [Watch Video Solution](#)

92. Which of the following conditions may lead to a non-spontaneous change?

- A. ΔH and ΔS both $+ve$
- B. ΔH is $-ve$ and ΔS is $+ve$
- C. ΔH and ΔS both $-ve$
- D. ΔH is $+ve$ and ΔS is $-ve$

Answer: D

 [Watch Video Solution](#)

93. Suppose that a reaction has $\Delta H = -40kJ$ and $\Delta S = -50J/K$.
At what temperature range will it change from spontaneous to non-

spontaneous?

- A. 0.8 K to 1 K
- B. 799 K to 800 K
- C. 800 K to 801 K
- D. 799 K to 801 K

Answer: D

 [Watch Video Solution](#)

94. For isothermal expansion in case of an ideal gas :

- A. $\Delta G = \Delta S$
- B. $\Delta G = \Delta H$
- C. $\Delta G = -T \cdot \Delta S$
- D. None of these

Answer: C



Watch Video Solution

95. What is the normal boiling point of mercury?

$$\text{Given : } \Delta H_f^\circ (Hg, l) = 0, S^\circ (Hg, l) = 77.4J/K - \text{mol}$$

$$\Delta H_f^\circ (Hg, g) = 60.8kJ/\text{mol}, S^\circ (Hg, g) = 174.4J/K - \text{mol}$$

A. 624.8 K

B. 626.8 K

C. 636.8 K

D. None of these

Answer: B



Watch Video Solution

96. 19 gm of ice is converted into water at $0^\circ C$ and 1 atm. The entropies of $H_2O(s)$ and $H_2O(l)$ are 38.2 and $60J/\text{mol } K$ respectively. The enthalpy change for this conversion is :

A. $5951.4J/\text{mol}$

B. $595.14J/\text{mol}$

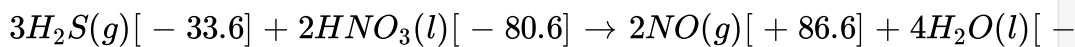
C. $-5951.4J/\text{mol}$

D. None of these

Answer: A

 [Watch Video Solution](#)

97. Using the listed [ΔG_f° values] calculate ΔG° for the reaction :



A. -513.2

B. -1037.0

C. $+433.4$

D. $+225.0$

Answer: A

 Watch Video Solution

98. From the following ΔH° and ΔS° values, predict which of reactions I, II and III would be spontaneous at 25°C .

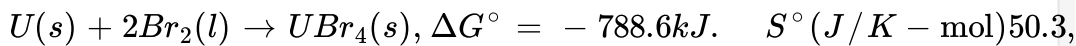
	ΔH° (kJ)	ΔS° (J/K)
I.	+10.5	+30
II.	+1.8	-113
III.	-126	+84

- A. III
- B. I
- C. II and III
- D. I and II

Answer: A

 Watch Video Solution

99. Calculate ΔH_f° for Ubr_4 from the ΔG° of reaction and the S° values



A. -822.1 kJ/mol

B. -841.2 kJ/mol

C. -775.6 kJ/mol

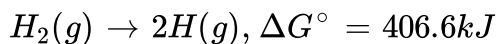
D. -804.3 kJ/mol

Answer: A



Watch Video Solution

100. The entropies of H_2 (g) and H (g) are 130.6 and 114.6 $\text{J mol}^{-1} \text{K}^{-1}$ respectively at 298 K. Using the data given below calculate the bond energy of H_2 (in kJ/mol) :



A. 377.2

B. 436

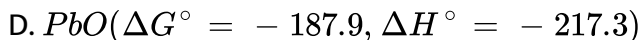
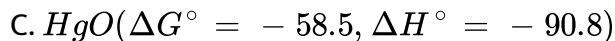
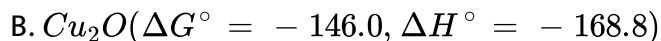
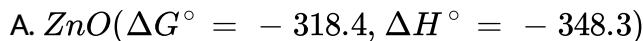
C. 425.5

D. 430.5

Answer: B

 [Watch Video Solution](#)

101. Consider the ΔG_f° and ΔH_f° (kJ/mol) for the following oxides. Which can be most easily decomposed to form the metal and oxygen gas?



Answer: C

 [Watch Video Solution](#)

102. Which of the following option is correct ?

A. $\left[\frac{\partial \ln K_p}{\partial T} \right] = \frac{\Delta H^\circ}{RT^2}$

B. $\frac{\partial \ln K}{\partial T} = \frac{E_a}{RT^2}$

C. $\left[\frac{\partial \ln K_p}{\partial T} \right] = \frac{\Delta U}{RT^2}$

D. All of these

Answer: D



Watch Video Solution

103. Calculate ΔG° (kJ/mol) at $127^\circ C$ for a reaction with

$K_{\text{equilibrium}} = 10^5$:

A. -38.294

B. -16.628

C. -9.16

D. None of these

Answer: A

 [Watch Video Solution](#)

104. When reaction is at standard state at equilibrium, then

A. $\Delta H^\circ = 0$

B. $\Delta S^\circ = 0$

C. equilibrium constant $K=0$

D. equilibrium constant $K=1$

Answer: D

 [Watch Video Solution](#)

105. At 25°C , ΔG° for the process $\text{H}_2\text{O}(l) \rightleftharpoons \text{H}_2\text{O}(g)$ is 8.6 kJ. The vapour pressure of water at this temperature, is nearly :

- A. 24 torr
- B. 285 torr
- C. 23.72 torr
- D. 100 torr

Answer: A

 [Watch Video Solution](#)

106. For the auto-ionization of water at 25°C , $\text{H}_2\text{O}(l) \rightleftharpoons \text{H}^+(\text{aq}) + \text{OH}^-(\text{aq})$ equilibrium constant is 10^{-14} .

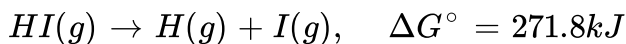
What is ΔG° for the process?

- A. $\cong 8 \times 10^4 J$
- B. $\cong 3.5 \times 10^4 J$
- C. $\cong 10^4 J$
- D. None of these

Answer: A

 [Watch Video Solution](#)

107. The molar entropies of HI(g), H(g) and I(g) at 298 K are 206.5, 114.6, and 180.7 J mol⁻¹K⁻¹ respectively. Using the ΔG° given below, calculate the bond energy of HI.



A. 282.4kJmol⁻¹

B. 298.3kJmol⁻¹

C. 290.1kJmol⁻¹

D. 315.4kJmol⁻¹

Answer: B

 [Watch Video Solution](#)

108. Hess's law states that

- A. the standard enthalpy of an overall reaction is the sum of the enthalpy changes in individual reactions.
- B. enthalpy of formation of a compound is same as the enthalpy of decomposition of the compound into constituent elements, but with opposite sign.
- C. at constant temperature the pressure of a gas is inversely proportional to its volume
- D. the mass of a gas dissolved per litre of a solvent is proportional to the pressure of the gas in equilibrium with the solution

Answer: A



Watch Video Solution

109. An imaginary reaction $X \rightarrow Y$ takes place in three steps



If Hess's law is applicable, then the heat of the reaction ($X \rightarrow Y$) is :

A. $q_1 - q_2 + q_3$

B. $q_2 - q_3 - q_1$

C. $q_1 - q_2 - q_3$

D. $q_3 - q_2 - q_1$

Answer: B

 [Watch Video Solution](#)

110. The enthalpy change for a reaction does not depend upon:

A. the physical states of reactants and products

B. use of different reactants for the same product

C. the number of intermediate reaction steps

D. the differences in initial or final temperature of involved substances

Answer: C

 [Watch Video Solution](#)

111. The standard enthalpy of formation of gaseous H_2O at 298 K is -241.82 kJ/mol. Calculate ΔH° at 373 K given the following values of the molar heat capacities at constant pressure :

$$H_2O(g) = 33.58 \text{ JK}^{-1} \text{ mol}^{-1}, \quad H_2(g) = 29.84 \text{ JK}^{-1} \text{ mol}^{-1}, \quad O_2(g)$$

Assume that the heat capacities are independent of temperature :

A. -242.6 kJ/mol

B. -485.2 kJ/mol

C. -121.3 kJ/mol

D. -286.4 kJ/mol

Answer: A

 [Watch Video Solution](#)

112. Which of the following value of ΔH_f° represent that the product is least stable ?

A. -94.0kcalmol^{-1}

B. $-231.6\text{kcalmol}^{-1}$

C. $+21.4\text{kcalmol}^{-1}$

D. $+64.8\text{kcalmol}^{-1}$

Answer: D



[Watch Video Solution](#)

113. For which of the following substances is the heat of formation in the standard state zero ?

A. Sucrose

B. Ethanol

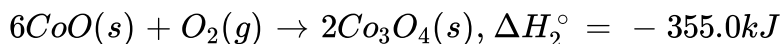
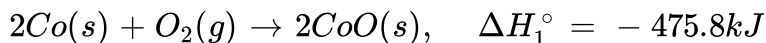
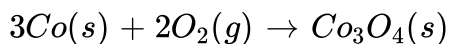
C. Aluminium

D. Calcium chloride

Answer: C

 [Watch Video Solution](#)

114. Calculate the standard enthalpy of reaction for the following reaction using the listed enthalpies of reaction :



A. $-891.2kJ$

B. $-120.8kJ$

C. $+891.2kJ$

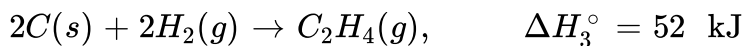
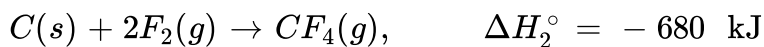
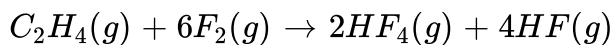
D. $-830.8kJ$

Answer: A



Watch Video Solution

115. Given the following equations and ΔH° values, determine the enthalpy of reaction at 298 K for the reaction :



A. -1165

B. -2486

C. +1165

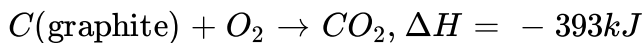
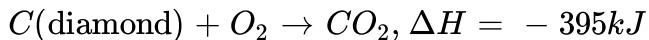
D. +2486

Answer: B



Watch Video Solution

116. Given :



The enthalpy of formation of diamond from graphite is

A. $+2.0 \text{ kJ}$

B. -1.5 kJ

C. -788 kJ

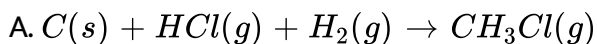
D. 788 kJ

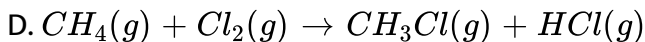
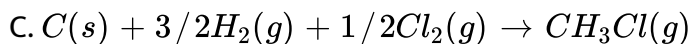
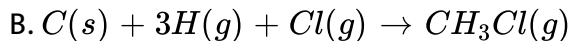
Answer: A



[Watch Video Solution](#)

117. Which of the following equations represents a reaction that provides the enthalpy of formation of CH_3Cl ?

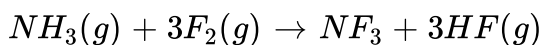




Answer: C

 [Watch Video Solution](#)

118. Use the given standard enthalpies of formation (in kJ/mol) to determine the enthalpy of reaction of the following reaction :



$$\Delta H_f^\circ(NH_3, g) = -46.2, \quad \Delta H_f^\circ(NF_3, g) = -113.0, \quad \Delta H_f^\circ(HF, g) =$$

A. -335.8 kJ/mol

B. -873.8 kJ/mol

C. -697.2 kJ/mol

D. -890.4 kJ/mol

Answer: B

 [Watch Video Solution](#)

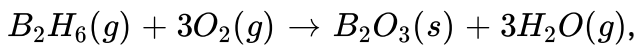
119. The standard enthalpy of formation of octane (C_8H_{18}) is -250kJ/mol . Calculate the enthalpy of combustion of C_8H_{18} . The enthalpy of formation of $CO_2(g)$ and $H_2O(l)$ are -394kJ/mol and -286kJ/mol respectively.

- A. -5200 kJ/mol
- B. -5726 kJ/mol
- C. -5476 kJ/mol
- D. -5310 kJ/mol

Answer: C

 [Watch Video Solution](#)

120. Determine the enthalpy of formation of $B_2H_6(g)$ in kJ/mol of the following reaction :



Given

$$\Delta_r H^\circ = -1941 \text{ kJ/mol}, \quad \Delta H_f^\circ(B_2O_3, s) = -1273 \text{ kJ/mol},$$

$$\Delta H_f^\circ(H_2O, g) = -241.8 \text{ kJ/mol}$$

A. -75.6

B. $+75.6$

C. -57.4

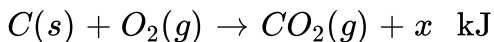
D. -28.4

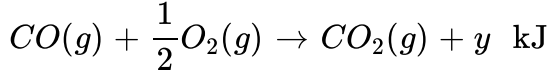
Answer: C



Watch Video Solution

121. Consider the following reactions:





The heat formation of $CO(g)$ is :

A. $-(x + y)$ kJ/mol

B. $(x - y)$ kJ/mol

C. $(y - x)$ kJ/mol

D. None of these

Answer: C



Watch Video Solution

122. If $\Delta_f H^\circ (C_2H_4)$ and $\Delta_f H^\circ (C_2H_6)$ are x_1 and x_2 kcal mol^{-1} , then

heat of hydrogenation of C_2H_4 is :

A. $x_1 + x_2$

B. $x_1 - x_2$

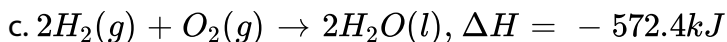
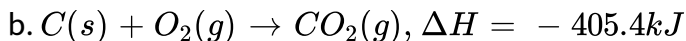
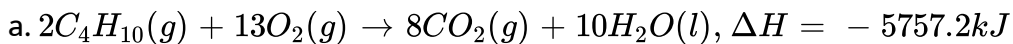
C. $x_2 - x_1$

D. $x_1 + 2x_2$

Answer: C

 [Watch Video Solution](#)

123. Calculate the heat of formation of n butane from the following data:



A. 575.6

B. 287.8

C. 182

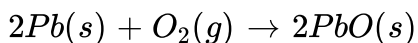
D. 57.56

Answer: B

 [Watch Video Solution](#)

124. The enthalpy of the reaction forming PbO according to the following equation is 438 kJ. What heat energy (kJ) is released in formation of 22.3 g PbO(s)?

(Atomic masses : Pb = 207, O = 16.0)



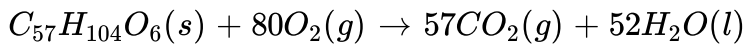
- A. 21.9
- B. 28.7
- C. 14.6
- D. 34.2

Answer: A



[Watch Video Solution](#)

125. The fat, $C_{57}H_{104}O_6(s)$, is metabolized via the following reaction. Given the enthalpies of formation, calculate the energy (kJ) liberated when 1.0 g of this fat reacts.



$$\Delta_f H^\circ(C_{57}H_{104}O_6, s) = -70870 \text{ kJ/mol}, \quad \Delta_f H^\circ(H_2O, l) = -285.8$$

$$\Delta_f H^\circ(CO_2, g) = -393.5 \text{ kJ/mol}$$

A. 37.98

B. 40.4

C. 33.4

D. 30.2

Answer: A



Watch Video Solution

126. The heat of formation of $NH_3(g)$ is -46 kJ mol^{-1} . The ΔH (in kJ mol^{-1}) of the reaction, $2NH_3(g) \rightarrow N_2(g) + 3H_2(g)$ is

A. 46

B. -46

C. 92

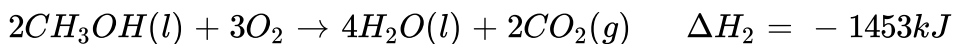
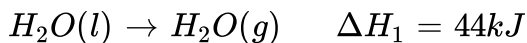
D. - 92

Answer: C



Watch Video Solution

127. Consider the following reaction:



What is the value of ΔH for second reaction if water vapour instead of liquid water is formed as product?

A. - 1409kJ

B. - 1629kJ

C. 1277kJ

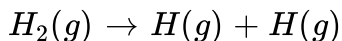
D. None of these

Answer: C



Watch Video Solution

128. The standard enthalpy change for the following reaction is 436.4 kJ :



What is the $\Delta_f H^\circ$ of atomic hydrogen (H)?

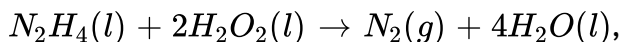
- A. 872.8 kJ/mol
- B. 218.2 kJ/mol
- C. - 218.2 kJ/mol
- D. - 436.9 kJ/mol

Answer: B

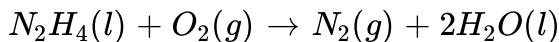


Watch Video Solution

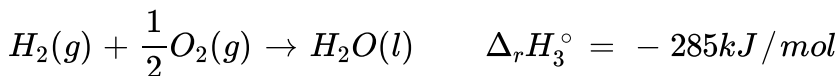
129. Determine enthalpy of formation for $H_2O_2(l)$, using the listed enthalpies of reaction :



$$\Delta_r H_1^\circ = -818 \text{ kJ/mol}$$



$$\Delta_r H_2^\circ = -622 \text{ kJ/mol}$$



- A. -383 kJ/mol
- B. -187 kJ/mol
- C. -498 kJ/mol
- D. None of these

Answer: B

 [Watch Video Solution](#)

130. Heat of combustion of ethanol at constant pressure and at temperature T K is found to be $-qJ \text{ mol}^{-1}$. Hence, heat of combustion (in $J \text{ mol}^{-1}$) of ethanol at the same temperature and at constant volume will be :

A. $RT - q$

B. $-(q + RT)$

C. $q - RT$

D. $q + RT$

Answer: A

 [Watch Video Solution](#)

131. Stearic acid $[CH_3(CH_2)_{16}CO_2H]$ is a fatty acid the part of fat that stores most of the energy .1.0 g of Stearic acid was burnt in a bomb calorimeter . The bomb had capacity of $652 J/^\circ C$. If the temperature of 500 g water rose from 25.0 to $39.3^\circ C$ how much heat is released when the stearic acid was burned?

[Given $C_p(H_2O) = 4.18J/g^\circ c$]

A. 39.21 kj

B. 29.91 kj

C. 108 kJ

D. 9.32 kJ

Answer: A



[Watch Video Solution](#)

132. Gasoline has an enthalpy of combustion 24000 kJ/mol gallon. When gasoline burns in an automobile engine, approximately 30% of the energy released is used to produce mechanical work. The remainder is lost as heat transfer to the engine's cooling system. As a start on estimating how much heat transfer is required, calculate what mass of water could be heated from $25^{\circ}C$ to $75^{\circ}C$ by the combustion of 1.0 gallon of gasoline in an automobile? (Given : $C(H_2O) = 4.18J/g^{\circ}C$)

A. 34.45 kg

B. 80.383 kg

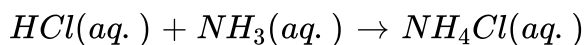
C. 22 kg

D. 224 kg

Answer: B

 [Watch Video Solution](#)

133. A 0.05 L sample of 0.2 M aqueous hydrochloric acid is added to 0.05 L of 0.2 M aqueous ammonia in a calorimeter. Heat capacity of entire calorimeter system is 480 J/K. The temperature increase is 1.09 K. Calculate $\Delta_r H^\circ$ in kJ/mol for the following reaction :



A. - 52.32

B. - 61.1

C. - 55.8

D. - 58.2

Answer: A

 [Watch Video Solution](#)

134. a Coffee cup calorimeter initially contains 125 g of water , at a temperature of 24.2°C ,8 of ammonium nitrate (NH_4NO_3) also at 24.2°C is added to the Water and the final temperature is 18.2°C What is the heat of solution of ammonium nitrate in KJ/mol ? (The specific heat capacity of the solution is $4.2\text{J}/^{\circ}\text{C}$.)

A. 33.51 kJ/mol

B. 39.5 kJ/mol

C. 32.2 kJ/mol

D. 37.3 kJ/mol

Answer: A

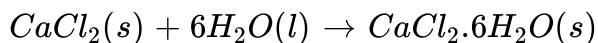


Watch Video Solution

135. Read following statement(s) carefully and select the right option :

(I) The enthalpy of solution of $\text{CaCl}_2 \cdot 6\text{H}_2\text{O}$ in a large volume of water is

endothermic to the extent of 3.5 kcal/mol. If $\Delta H = -23.2$ kcal for the reaction,



then heat of solution of CaCl_2 (anhydrous) in a large volume of water is -19.7 kcal/mol

(II) For the reaction $2\text{Cl}(g) \rightarrow \text{Cl}_2(g)$, the sign of ΔH and ΔS are negative.

A. Statement I and II both are wrong

B. both are correct

C. only I is correct

D. only II is correct

Answer: B



[Watch Video Solution](#)

136. If the enthalpy of formation and enthalpy of solution of HCl (g) are -92.3 kJ/mol and -75.14 kJ/mol respectively then find the enthalpy of Cl^-

(aq):

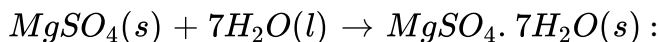
- A. -17.16 kJ/mol
- B. -167.44 kJ/mol
- C. 17.16 kJ/mol
- D. None of these

Answer: B



[Watch Video Solution](#)

137. At 25°C , when 1 mole of MgSO_4 was dissolved in water, the heat evolved was found to be 91.2 kJ. One mole of $\text{MgSO}_4 \cdot 7\text{H}_2\text{O}$ on dissolution gives a solution of the same composition accompanied by an absorption of 13.8 kJ. The enthalpy of hydration, i.e., ΔH_h for the reaction



- A. -105 kJ/mol
- B. -77.4 kJ/mol

C. 105 kJ/mol

D. None of these

Answer: A



Watch Video Solution

138. The enthalpy of neutralization of weak base A OH and a strong base BOH by HCl are -12250 cal/mol and -13000 cal/mol respectively . When one mole of HCl is added to a solution containing 1 mole of A OH and 1 mole of BOH , the enthalpy change was -12500 cal/mol . In what ratio is the acid distribution between A OH and BOH?

A. 2 : 1

B. 2 : 3

C. 1 : 2

D. None of these

Answer: A



Watch Video Solution

139. The absolute enthalpy of neutralization of the reaction,

$MgO(s) + 2HCl(aq.) + H_2O(l)$ will be

- A. less than 57 kJ mol^{-1}
- B. -57 kJ mol^{-1}
- C. greater than 57 kJ mol^{-1}
- D. 57 kJ mol^{-1}

Answer: C



Watch Video Solution

140. Enthalpy of neutralization of HCl by NaOH is -55.84 kJ/mol and by NH_4OH is -51.34 kJ/mol . The enthalpy of ionization of NH_4OH is :

- A. 107.18 kJ/mol

B. 4.5 kJ/mol

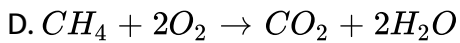
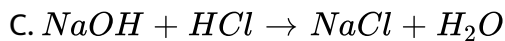
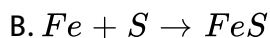
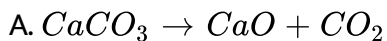
C. - 4.5 kJ/mol

D. None of these

Answer: B

 [Watch Video Solution](#)

141. Which of the following reaction is endothermic?



Answer: A

 [Watch Video Solution](#)

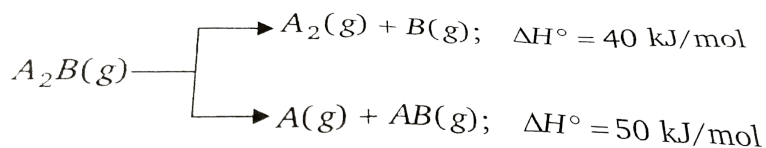
142. Which of the following is not correct ?

- A. Dissolution of a salt in excess of water may be endothermic process
- B. Neutralisation is always exothermic
- C. The absolute value of enthalpy (H) can be determined by calorimeter
- D. The heat of reaction at constant volume is denoted by δU

Answer: C

 [Watch Video Solution](#)

143. Substance $A_2B(g)$ can undergoes decomposition to form two set of products :



If the molar ratio of $A_2(g)$ to $A(g)$ is 5: 3 in a set of product gases, then the energy involved in the decomposition of 1 mole of $A_2B(g)$ is :

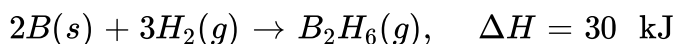
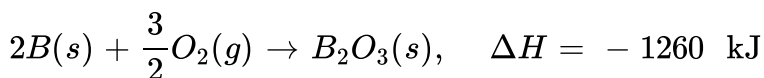
- A. 48.75 kJ/mol
- B. 43.73 kJ/mol
- C. 46.25 kJ/mol
- D. None of these

Answer: B



[Watch Video Solution](#)

144. Boron can undergo the following reactions with the given enthalpy changes :



Assume no other reactions are occurring.

If in a container (operating at constant pressure) which is isolated from the surrounding, mixture of H_2 (gas) and O_2 (gas) are passed over excess

of B(s), then calculate the molar ratio ($O_2:H_2$) so that temperature of the container do not change :

A. 15:3

B. 42:1

C. 1:42

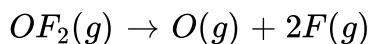
D. 1:84

Answer: D



[Watch Video Solution](#)

145. The enthalpy change for the following reaction is 368 kJ. Calculate the average O-F bond energy.



A. 184 kJ/mol

B. 368 kJ/mol

C. 536 kJ/mol

D. 736 kJ/mol

Answer: A

 Watch Video Solution

146. The enthalpy change for the reaction, $C_2H_6(g) \rightarrow 2C(g) + 6H(g)$ is X kJ. The bond energy of C-H bond is :

A. $\frac{X}{2}$

B. $\frac{X}{3}$

C. $\frac{X}{6}$

D. data insufficient

Answer: D

 Watch Video Solution

147. The table given below lists the bond dissociation energy (E_{diss}) for single covalent bonds formed between C and atoms A, B, D, E.

Bond	E_{diss} (kcal mol ⁻¹)
$C - A$	240
$C - B$	382
$C - D$	276
$C - E$	486

Which of the atoms has smallest size ?

A. D

B. E

C. A

D. D

Answer: B



Watch Video Solution

148. Calculate $P - Cl$ bond enthalpy



$$\Delta H_{\text{atomization}}(P, s) = 314 \text{ kJ/mol},$$

$$\Delta_r H(\text{Cl}, g) = 1231 \text{ kJ/mol}$$

A. 123.66 kJ/mol

B. 371 kJ/mol

C. 19 kJ/mol

D. None of these

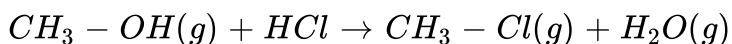
Answer: A



Watch Video Solution

149. Calculate the enthalpy for the following reaction using the given bond energies (kJ/mol) :

$$(C - H = 414, H - O = 463, H - Cl = 431, C - Cl = 326, C - O = 333)$$



A. - 23 kJ/mol

B. - 42 kJ/mol

C. -59 kJ/mol

D. -511 kJ/mol

Answer: A

 [Watch Video Solution](#)

150. Based on the values of B.E. given, $\Delta_f H^\circ$ of N_2H_4 (g) is :

Given : $N - N = 159 \text{ kJ mol}^{-1}$, $H - H = 436 \text{ kJ mol}^{-1}$

$N \equiv N = 941 \text{ kJ mol}^{-1}$, $N - H = 398 \text{ kJ mol}^{-1}$

A. 711 kJ mol^{-1}

B. 62 kJ mol^{-1}

C. -98 kJ mol^{-1}

D. -711 kJ mol^{-1}

Answer: B

 [Watch Video Solution](#)

Level 2

1. A heating coil is immersed in a 100 g sample of H_2O (l) at a 1 atm and 100°C in a closed vessel. In this heating process, 60% of the liquid is converted to the gaseous form at constant pressure of 1 atm. The densities of liquid and gas under these conditions are 1000 kg/m^3 and 0.60 kg/m^3 respectively. Magnitude of the work done for the process is :
(Take : $1\text{L}\cdot\text{atm} = 100\text{ J}$)`

A. 4997 J

B. 4970 J

C. 9994 J

D. None of these

Answer: C



Watch Video Solution

2. A rigid and insulated tank of $3m^3$ volume is divided into two compartments. One compartment of volume of $2m^3$ contains an ideal gas at 0.8314 Mpa and 400 K while the second compartment of volume of $1m^3$ contains the same gas at 8.314 Mpa and 500 K. If the partition between the two compartments is ruptured, the final temperature of the gas is :

A. 420 K

B. 450 K

C. 480 K

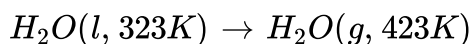
D. None of these

Answer: C



[Watch Video Solution](#)

3. What is the value of change in internal energy at 1 atm in the process?



Given

$$C_{v,m}(H_2O, l) = 75.0 JK^{-1}mol^{-1}; \quad C_{p,m}(H_2O, g) = 33.314 JK^{-1}mol^{-1}$$

$$\Delta H_{vap} \text{ at } 373 \text{ K} = 40.7 kJ/mol$$

(a) $42.91 kJ/mol$

(b) $43086 kJ/mol$

(c) $42.6 kJ/mol$

(d) $49.6 kJ/mol$

A. $42.91 kJ/mol$

B. $43086 kJ/mol$

C. $42.6 kJ/mol$

D. $49.6 kJ/mol$

Answer: C



Watch Video Solution

4. For an ideal gas $\frac{C_{p,m}}{C_{v,m}} = \gamma$. The molecular mass of the gas is M, its specific heat capacity at constant volume is :

A. $\frac{R}{M(\gamma - 1)}$

B. $\frac{M}{R(\gamma - 1)}$

C. $\frac{\gamma RM}{\gamma - 1}$

D. $\frac{\gamma R}{M(\gamma - 1)}$

Answer: A



Watch Video Solution

5. 1 mole of an ideal gas A ($C_{v,m} = 3R$) and 2 mole of an ideal gas B are $\left(C_{v,m} = \frac{3}{2}R\right)$ taken in a container and expanded reversibly and adiabatically from 1 litre of 4 litre starting from initial temperature of 320

K. ΔE or ΔU for the process is :

A. 240 R

B. -240 R

C. 480 R

D. - 960 R

Answer: D



Watch Video Solution

6. Calculate the work done by the system in an irreversible (single step) adiabatic expansion of 2 mole of a polyatomic gas ($\gamma = 4/3$) from 300 K and pressure 10 atm to 1 atm :

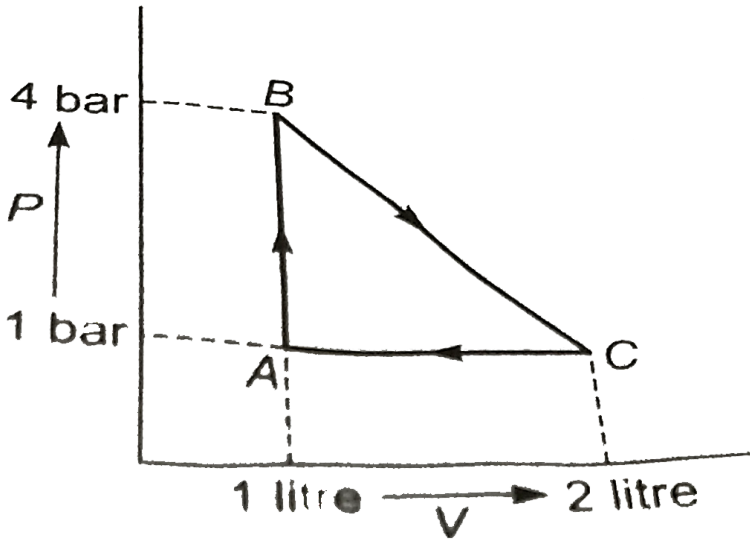
- A. -227
- B. $-205R$
- C. $-405R$
- D. None of these

Answer: C



Watch Video Solution

7. One mole of an ideal gas is carried through the reversible cyclic process as shown in figure. The max. temperature attained by the gas during the cycle



A. $\frac{7}{6R}$

B. $\frac{12}{49R}$

C. $\frac{49}{12R}$

D. None of these

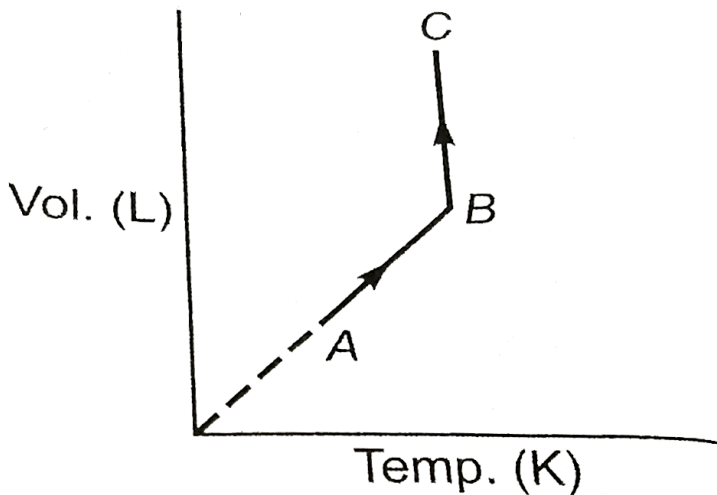
Answer: C



Watch Video Solution

8. Two moles of a triatomic linear gas (neglect vibration degree of freedom) are taken through a reversible process ideal starting from A as shown in figure.

The volume ratio $\frac{V_B}{V_A} = 4$. If the temperature at A is -73°C , then :



Total enthalpy change in both steps is :

- a. $3000 R$
- b. $4200 R$
- c. $2100 R$
- d. 0

A. 3000 R

B. 4200 R

C. 2100 R

D. 0

Answer: B::C

 [Watch Video Solution](#)

9. A gas $\left(C_{v.m} = \frac{5}{2}R\right)$ behaving ideally is allowed to expand reversibly and adiabatically from 1 litre to 32 litre. Its initial temperature is $327^\circ C$.

The molar enthalpy change (in J/mol) for the process is :

A. $-1125R$

B. -675

C. $-1575R$

D. None of these

Answer: C



[Watch Video Solution](#)

10. Two mole of an ideal gas is heated at constant pressure of one atmosphere from $27^\circ C$ to $127^\circ C$. If $C_{v,m} = 20 + 10^{-2}T \text{ JK}^{-1} \cdot \text{mol}^{-1}$, then q and ΔU for the process are respectively:

A. $6362.8J$, $4700J$

B. $3037.2J$, $4700J$

C. $7062.8J$, $5400J$

D. None of these

Answer: A



[Watch Video Solution](#)

11. 10 mole of an ideal gas is heated at constant pressure of one atmosphere from $27^{\circ}C$ to $127^{\circ}C$. If

$C_{v,m} = 21.686 + 10^{-3}T$ ($JK^{-1} \cdot mol^{-1}$), then ΔH for the process is :

- A. 3000 J
- B. 3350 J
- C. 3700 J
- D. 3181.4J, 2350J

Answer: D



[Watch Video Solution](#)

12. For polytropic process $PV^n = \text{constant}$, molar heat capacity (C_m) of an ideal gas is given by:

A. $C_{v,m} + \frac{R}{(n-1)}$

B. $C_{v,m} + \frac{R}{(1-n)}$

C. $C_{v,m} + R$

D. $C_{p,m} + \frac{R}{(n - 1)}$

Answer: B

 [Watch Video Solution](#)

13. 2 mole of an ideal monoatomic gas undergoes a reversible process for which $PV^2 = C$. The gas is expanded from initial volume of 1 L to final volume of 3 L starting from initial temperature of 300 K. Find ΔH for the process :

A. $- 600 R$

B. $- 1000 R$

C. $- 3000 R$

D. None of these

Answer: B

 [Watch Video Solution](#)

14. Calculate ΔS for 3 mole of a diatomic ideal gas which is heated and compressed from 298 K and 1 bar to 596 K and 4 bar: [Given:

$$C_{v,m}(gas) = \frac{5}{2}R, \ln(2) = 0.70, R = 2\text{calK}^{-1}\text{mol}^{-1}]$$

A. -14.7cal K^{-1}

B. $+14.7\text{calK}^{-1}$

C. -4.9calK^{-1}

D. 6.3 cal K^{-1}

Answer: D



Watch Video Solution

15. One mole of an ideal monoatomic gas at 27°C is subjected to a reversible isentropic compression until the temperature reached to

$327^{\circ}C$. If the initial pressure was 1.0atm , then find the value of $\ln P_2$

(Given : $\ln 2 = 0.7$)

- A. 1.75 atm
- B. 0.176 atm
- C. 1.0395 atm
- D. 2.0 atm

Answer: A



[Watch Video Solution](#)

16. Two moles of an ideal gas is expanded irreversibly and isothermally at $37^{\circ}C$ until its volume is doubled and 3.41KJ heat is absorbed from surrounding. $\Delta S_{\text{total}}(\text{system} + \text{surrounding})$ is:

- A. $-0.52\text{J}/\text{K}$
- B. $0.52\text{J}/\text{K}$
- C. $22.52\text{J}/\text{K}$

D. 0

Answer: B

 [Watch Video Solution](#)

17. For a perfectly crystalline solid $C_{p,m} = aT^3 + bT$, where a and b are constant. If $C_{p,m}$ is 0.40 J/K mol at 10 K and 0.92 J/K mol at 20 K, then molar entropy at 20 K is :

- A. 0.92 J/K mol
- B. 8.66 J/K mol
- C. 0.813 J/K mol
- D. None of these

Answer: C

 [Watch Video Solution](#)

18. Which of the following statement (s) is correct?

Statement-1: The entropy of isolated system with P-V work only, is always maximized at equilibrium.

Statement-2: It is possible for the entropy of closed system to decrease substantially in an irreversible process.

Statement-3: Entropy can be created but not destroyed.

Statement-4 ΔS_{system} is zero for reversible process in an isolated system.

A. Statement i, ii, iii

B. Statement ii, iv

C. Statement I, ii, iii

D. all of these

Answer: D



[Watch Video Solution](#)

19. Combustion of sucrose is used by aerobic organisms for providing energy for the life sustaining process. If all the capturing of energy from

the reaction is done through electrical process (non P-V work), then calculate, maximum available energy which can be captured by combustion of 34.2 g of sucrose :

(Given : $\Delta H_{\text{combustion}}(\text{sucrose}) = -6000 \text{ kJ mol}^{-1}$)

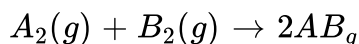
$\Delta S_{\text{combustion}} = 180 \text{ J/K - mol}$ and body temperature is 300 K)

- A. 600 kJ
- B. 594.6 kJ
- C. 5.4 kJ
- D. 605.4 kJ

Answer: D

 [Watch Video Solution](#)

20. For the hypothetical reaction



ΔG_r° and ΔS_r° are 20 kJ/mol and $-20 \text{ JK}^{-1} \text{ mol}^{-1}$ respectively at

$\Delta_r C_p$ is 20 JK^{-1} then ΔH_r° at 400 K is

A. 20 kJ/mol

B. 7.98 kJ/mol

C. 28 kJ/mol

D. None of these

Answer: A

 **Watch Video Solution**

21. Calculate $\Delta_r G^\circ$ for (NH_4Cl, s) at 310K.

Given : $\Delta_r H^\circ (NH_4Cl, s) = -314 \text{ kJ/mol}$, $\Delta_r C_p = 0$

$$S_{N_2(g)}^\circ = 192 \text{ JK}^{-1} \text{ mol}^{-1}, S_{H_2(g)}^\circ = 130.5 \text{ JK}^{-1} \text{ mol}^{-1},$$

$$S_{Cl_2(g)}^\circ = 233 \text{ JK}^{-1} \text{ mol}^{-1}, S_{NH_4Cl(s)}^\circ = 99.5 \text{ JK}^{-1} \text{ mol}^{-1}$$

All given data at 300K

A. -198.56 kJ/mol

B. -426.7 kJ/mol

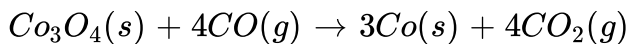
C. -202.3 kJ/mol

D. None of these

Answer: A

 [Watch Video Solution](#)

22. Using listed informations, calculate $\Delta_r G^\circ$ (in kJ/mol) at $27^\circ C$



Given : At 300 K ΔH_f° (kJ/mol) – 891, – 110.5, 0.0, – 393.5

S° (J/K – mol) 102.5, 197.7, 30.0, 213.7

A. – 214.8

B. – 195.0

C. – 200.3

D. -256.45

Answer: D

 [Watch Video Solution](#)

23. Fixed mass of an ideal gas collected in a 24.64 litre sealed rigid vessel at 10 atm is heated from $-73^{\circ}C$ to $27^{\circ}C$ calculate change in gibbs free energy if entropy of gas is a function of temperature as $S = 2 + 10^{-2}T(J/K)$ (1atm = 0.1kJ)

(a)1231.5 J

(b)1281.5 J

(c)781.5 J

(d)None

A. 1231.5 J

B. 1281.5 J

C. 781.5 J

D. None

Answer: C



Watch Video Solution

24. The molar heat capacities at constant pressure (assumed constant with respect to temperature) of A,B and C are in ratio 3:1.5:2.0. the enthalpy change for the exothermic reaction $A + 2B \rightarrow 3C$ at 300k and 310 K is ΔH_{300} and ΔH_{310} respectively then:

A. $\Delta H_{300} > \Delta H_{310}$

B. $\Delta H_{300} < \Delta H_{310}$

C. $\Delta H_{300} = \Delta H_{310}$

D. if

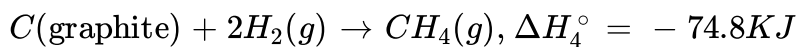
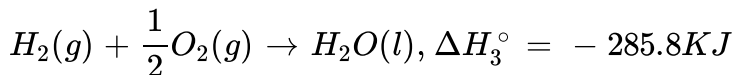
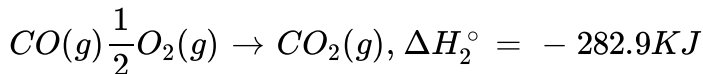
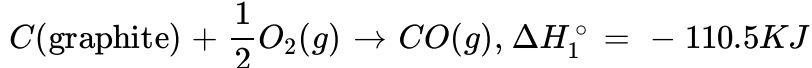
$T_2 > T_1$ then $\Delta H_{310} > \Delta H_{300}$ and if $T_2 < T_1$ then $\Delta H_{310} < \Delta H_{300}$

Answer: C

 [Watch Video Solution](#)

25. Determine ΔU° at 300K for the following reaction using the listed enthalpies of reaction :





A. - 653.5 kJ

B. - 686.2 kJ

C. - 747.4 kJ

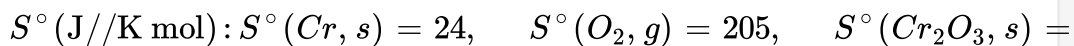
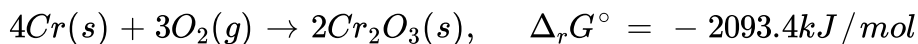
D. None of these

Answer: D



Watch Video Solution

26. Calculate $\Delta_f H^\circ$ (in kJ/mol) for Cr_2O_3 from the $\Delta_r G^\circ$ and the S° values provided at 27°



A. -2258.1kJ/mol

B. -1129.05kJ/mol

C. -964.35kJ/mol

D. None of these

Answer: B

 [Watch Video Solution](#)

27. Calculate the heat produced (in kJ) when 224 gm of CaO is completely converted to CaCO_3 by reaction with CO_2 at 27° in a container of fixed volume.

Given

:

$$\Delta H_f^\circ(\text{CaCO}_3, s) = -1207\text{kJ/mol}, \quad \Delta H_f^\circ(\text{CaO}, s) = -635\text{kJ/mol}$$

$$\Delta H_f^\circ(\text{CO}_2, g) = -394\text{kJ/mol}, \quad [\text{Use } R = 8.3\text{JK}^{-1}\text{mol}^{-1}]$$

A. 702.04 kJ

B. 721.96 kJ

C. 712 kJ

D. 721 kJ

Answer: A

 [Watch Video Solution](#)

28. When 1.0 g of oxalic acid ($H_2C_2O_4$) is burnt in a bomb calorimeter whose capacity is 8.75 KJ/K, the temperature increases by 0.312K, the enthalpy of combustion of oxalic acid at $27^\circ C$ is :

A. $-245.7kJ/mol$

B. $-244.452kJ/mol$

C. $-241.95kJ/mol$

D. None of these

Answer: D

 [Watch Video Solution](#)

29. Enthalpy of neutralization of H_3PO_3 with $NaOH$ is -106.68 kJ/mol . If enthalpy of neutralization of HCl with $NaOH$ is -55.84 kJ/mole , then calculate enthalpy of ionization of H_3PO_3 in to its ions in kJ .

A. 50.84 kJ/mol

B. 5 kJ/mol

C. 2.5 kJ/mol

D. None of these

Answer: B



[Watch Video Solution](#)

30. The enthalpy of neutralization of a Weak monoprotic acid (HA) in 1 M solution with a strong base is -55.95 KJ/mol . If the unionized acid required 1.4 KJ/mol heat for its complete ionization and enthalpy of

neutralization of the strong monobasic acid with a strong monoacidic base is -57.3 kJ/mol . What is the % ionization of the weak acid in molar solution ?

- A. 1 %
- B. 3.57 %
- C. 35.7 %
- D. 0.1

Answer: B



[Watch Video Solution](#)

31. Determine C-C and C-H bond enthalpy (in kJ/mol)

Given

:

$$\Delta_f H^\circ (C_2H_6, g) = -85 \text{ kJ/mol}, \quad \Delta_f H^\circ (C_3H_8, g) = -104 \text{ kJ/mol}$$

$$\Delta_{\text{sub}} H^\circ (C, s) = 718 \text{ kJ/mol}, \quad B. E. (H - H) = 436 \text{ kJ/mol}$$

A. 414345

B. 345414

C. 287404.5

D. None of these

Answer: B

 [Watch Video Solution](#)

32. Consider the following data :

$$\Delta_f H^\circ (N_2H_4, l) = 50 \text{ kJ/mol}, \Delta_f H^\circ (NH_3, g) = -46 \text{ kJ/mol}$$

$$B. E(N-H) = 393 \text{ kJ/mol} \text{ and } B.E.(H-H) = 436 \text{ kJ/mol}$$

$$\Delta_{\text{vap}} H(N_2H_4, l) = 18 \text{ kJ/mol}$$

The N-N bond energy in N_2H_4 is :

A. 226 kJ/mol

B. 154 kJ/mol

C. 190 kJ/mol

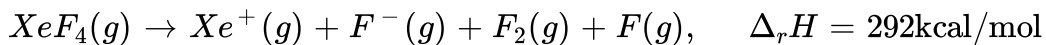
D. None of these

Answer: C



Watch Video Solution

33. What is the bond enthalpy of $Xe - F$ bond ?



Given : Ionization energy of $Xe = 279 \text{ kcal/mol}$

$B. E. (F - F) = 30 \text{ kcal/mol}$, Electron affinity of $F = 85 \text{ kcal/mol}$

A. 24 kcal/mol

B. 34 kcal/mol

C. 8.5 kcal/mol

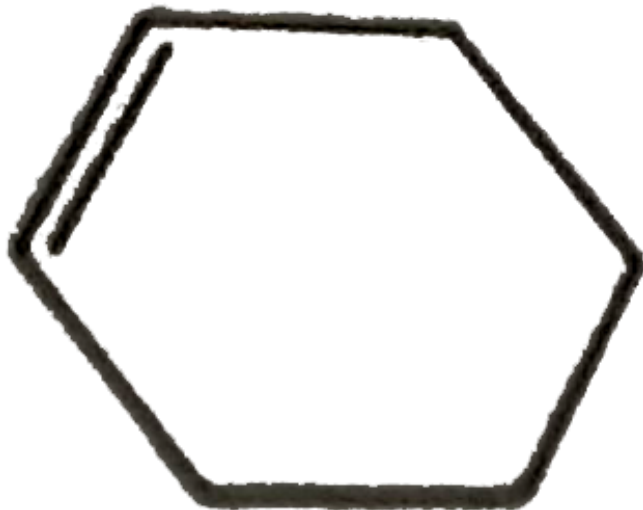
D. None of these

Answer: B



Watch Video Solution

34. If enthalpy of hydrogenation of $C_6H_6(l)$ into $C_6H_{12}(l)$ is $-205kJ/mol$ and resonance energy of $C_6H_6(l)$ is $-152kJ/mol$ then enthalpy of hydrogenation of



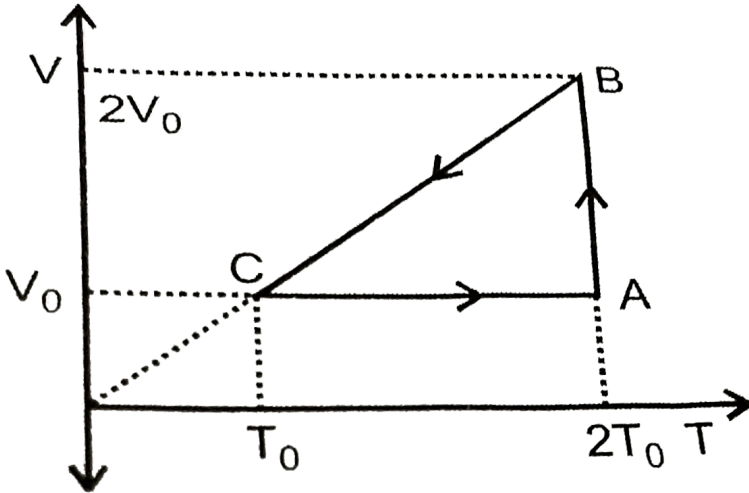
Assume ΔH_{vap} of $C_6H_6(l)$, $C_6H_{12}(l)$ all equal :

A. $-535.5kJ/mol$

B. $-238kJ/mol$

C. $-357kJ/mol$

36. The efficiency of an ideal gas with adiabatic exponent ' γ ' for the shown cyclic process would be



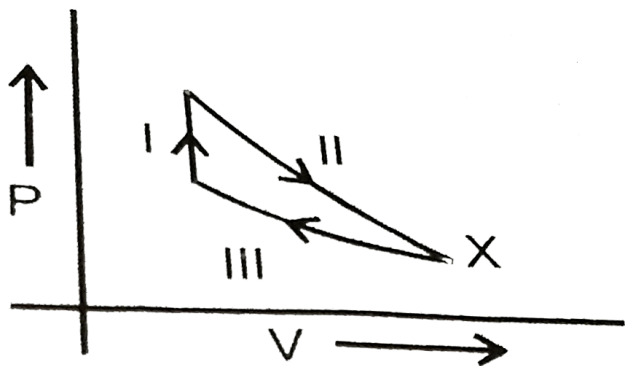
- A. $\frac{(\gamma - 1)(2 \ln 2 - 1)}{1 + (\gamma - 1)2 \ln 2}$
- B. $\frac{(\gamma - 1)(1 - 2 \ln 2)}{(\gamma - 1)2 \ln 2 - 1}$
- C. $\frac{(2 \ln 2 + 1)(\gamma - 1)}{(\gamma - 1)2 \ln 2 + 1}$
- D. $\frac{(2 \ln 2 - 1)}{\gamma/(\gamma - 1)}$

Answer: A



Watch Video Solution

37. Initially one mole of ideal gas ($C_v = \frac{5}{2}R$) at 0.1 atm and 300 K is put through the following cycle:



Step-I : Heating to twice its initial pressure at constant volume.

Step-II : Adiabatic expansion to its initial temperature.

Step-III : Isothermal compression back to 1.00 atm.

what is the volume at state X?

A. 40.4 L

B. 65.0 L

C. 139 L

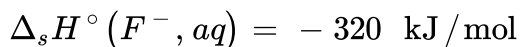
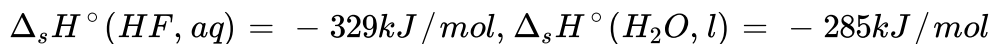
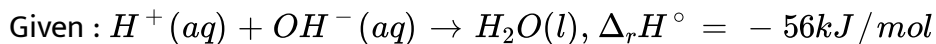
D. 4.35 L

Answer: C



Watch Video Solution

38. What is the enthalpy of neutralization of HF against a strong base?



A. -17 kJ/mol

B. -38 kJ/mol

C. -47 kJ/mol

D. -43 kJ/mol

Answer: C



Watch Video Solution

39. The molar heat capacities of Iodine vapour and solid are 7.8 and 14 cal/mol respectively. If enthalpy of iodine is 6096 cal/mol at $200^{\circ}C$, then what is ΔU (internal energy change) at $250^{\circ}C$ in cal/mol

A. 5360

B. 4740

C. 6406

D. None of these

Answer: B



[Watch Video Solution](#)

40. For the reaction taking place at certain temperature $NH_2COONH_4(s) \rightleftharpoons 2NH_3(g) + CO_2(g)$ if equilibrium pressure is 3 X bar then $\Delta_r G^{\circ}$ would be

A. $-RT \ln 9 - 3RT \ln X$

B. $RT \ln 4 - 3RT \ln X$

C. $-3RT \ln X$

D. None of these

Answer: D

 [Watch Video Solution](#)

Level 3

1. The first law of thermodynamics for a closed system is $dU = dq + dw$, where $dw = dw_{pv} + dw_{\text{non-pv}}$. The most common type of $w_{\text{non-pv}}$ is electrical work. As per IUPAC convention work done on the system is positive.

A system generates 50 J electrical energy, has 150 J of pressure-volume work done on it by the surroundings while releasing 300 J of heat energy. What is the change in the internal energy of the system?

A. -500

B. – 100

C. – 300

D. – 200

Answer: D



Watch Video Solution

2. The first law of thermodynamics for a closed system is $dU = dq + dw$, where $dw = dw_{pv} + dw_{\text{non-pv}}$. The most common type of $w_{\text{non-pv}}$ is electrical work. As per IUPAC convention work done on the system is positive.

A system generates 50 J of electrical energy and delivers 150 J of pressure-volume work against the surroundings while releasing 300 J of heat energy. What is the change in the internal energy of the system?

A. – 100

B. – 400

C. – 300

D. – 500

Answer: D



Watch Video Solution

3. If the boundary of system moves by an infinitesimal amount, the work involved is given by $dw = -P_{\text{ext}}dV$

for irreversible process $w = -P_{\text{ext}}\Delta V$ (where $\Delta V = V_f - V_i$)

for reversible process $P_{\text{ext}} = P_{\text{int}} \pm dP \cong P_{\text{int}}$

so for reversible isothermal process $w = -nRT \ln. \frac{V_f}{V_i}$

2mole of an ideal gas undergoes isothermal compression along three different paths :

(i) reversible compression from $P_i = 2$ bar and $V_i = 8L$ to $P_f = 20$ bar

(ii) a single stage compression against a constant external pressure of 20 bar, and

(iii) a two stage compression consisting initially of compression against a constant external pressure of 10 bar until $P_{\text{gas}} = P_{\text{ext}}$, followed by

compression against a constant pressure of 20 bar until $P_{\text{gas}} = P_{\text{ext}}$

Work done (in bar-L) on the gas in reversible isothermal compression is :

A. 9.212

B. 36.848

C. 18.424

D. None of these

Answer: B



Watch Video Solution

4. If the boundary of system moves by an infinitesimal amount, the work

involved is given by $dw = -P_{\text{ext}}dV$

for irreversible process $w = -P_{\text{ext}}\Delta V$ (where $\Delta V = V_f - V_i$)

for reversible process $P_{\text{ext}} = P_{\text{int}} \pm dP \cong P_{\text{int}}$

so for reversible isothermal process $w = -nRT \ln. \frac{V_f}{V_i}$

2mole of an ideal gas undergoes isothermal compression along three different plaths :

- (i) reversible compression from $P_i = 2$ bar and $V_i = 8L$ to $P_f = 20$ bar
- (ii) a single stage compression against a constant external pressure of 20 bar, and
- (iii) a two stage compression consisting initially of compression against a constant external pressure of 10 bar until $P_{\text{gas}} = P_{\text{ext}}$, followed by compression against a constant pressure of 20 bar until $P_{\text{gas}} = P_{\text{ext}}$

Work done on the gas in single stage compression is :

- A. 36
- B. 72
- C. 144
- D. None of these

Answer: C



[Watch Video Solution](#)

5. If the boundary of system moves by an infinitesimal amount, the work involved is given by $dw = - P_{\text{ext}} dV$

for irreversible process $w = -P_{\text{ext}}\Delta V$ (where $\Delta V = V_f - V_i$)

for reversible process $P_{\text{ext}} = P_{\text{int}} \pm dP \cong P_{\text{int}}$

so for reversible isothermal process $w = -nRT \ln. \frac{V_f}{V_i}$

2mole of an ideal gas undergoes isothermal compression along three different paths :

- (i) reversible compression from $P_i = 2$ bar and $V_i = 8L$ to $P_f = 20$ bar
- (ii) a single stage compression against a constant external pressure of 20 bar, and
- (iii) a two stage compression consisting initially of compression against a constant external pressure of 10 bar until $P_{\text{gas}} = P_{\text{ext}}$, followed by compression against a constant pressure of 20 bar until $P_{\text{gas}} = P_{\text{ext}}$

Total work done on the gas in two stage compression is :

- A. 40
- B. 80
- C. 160
- D. None of these

Answer: B

6. If the boundary of system moves by an infinitesimal amount, the work involved is given by $dw = -P_{\text{ext}}dV$

for irreversible process $w = -P_{\text{ext}}\Delta V$ (where $\Delta V = V_f - V_i$)

for reversible process $P_{\text{ext}} = P_{\text{int}} \pm dP \cong P_{\text{int}}$

so for reversible isothermal process $w = -nRT \ln. \frac{V_f}{V_i}$

2mole of an ideal gas undergoes isothermal compression along three different paths :

(i) reversible compression from $P_i = 2$ bar and $V_i = 8L$ to $P_f = 20$ bar

(ii) a single stage compression against a constant external pressure of 20 bar, and

(iii) a two stage compression consisting initially of compression against a constant external pressure of 10 bar until $P_{\text{gas}} = P_{\text{ext}}$, followed by compression against a constant pressure of 20 bar until $P_{\text{gas}} = P_{\text{ext}}$

Order of magnitude of work is :

A. $w_1 > w_2 > w_3$

B. $w_3 > w_2 > w_1$

$$C. w_2 > w_3 > w_1$$

$$D. w_1 = w_2 = w_3$$

Answer: C



Watch Video Solution

7. Standard Gibb's energy of reaction ($\Delta_r G^\circ$) at a certain temperature can be computed $\Delta_r G^\circ = \Delta_r H^\circ - T \cdot \Delta_r S^\circ$ and the change in the value of $\Delta_r H^\circ$ and $\Delta_r S^\circ$ for a reaction with temperature can be computed as follows :

$$\Delta_r H_{T_2}^\circ - \Delta_r H_{T_1}^\circ = \Delta_r C_p^\circ (T_2 - T_1)$$

$$\Delta_r S_{T_2}^\circ - \Delta_r S_{T_1}^\circ = \Delta_r C_p^\circ \ln \left(\frac{T_2}{T_1} \right)$$

$$\Delta_r G^\circ = \Delta_r H^\circ - T \cdot \Delta_r S^\circ$$

and by $\Delta_r G^\circ = -RT \ln K_{eq}$.

Consider the following reaction : $CO(g) + 2H_2(g) \rightleftharpoons CH_3OH(g)$

Given

$$\Delta_f H^\circ (CH_3OH, g) = -201 \text{ kJ/mol}, \quad \Delta_f H^\circ (CO, g) = -114 \text{ kJ/mol}$$

$$S^\circ (CH_3OH, g) = 240 \text{ J/K-mol}, \quad S^\circ (H_2, g) = 29 \text{ JK}^{-1} \text{ mol}^{-1}$$

$$S^{\circ}(CO, g) = 198 \text{ J/mol-K}, \quad C_{p,m}^{\circ}(H_2) = 28.8 \text{ J/mol-K}$$

$$C_{p,m}^{\circ}(CO) = 29.4 \text{ J/mol-K}, \quad C_{p,m}^{\circ}(CH_3OH) = 44 \text{ J/mol-K}$$

and $\ln\left(\frac{320}{300}\right) = 0.06$, all data at 300 K

$\Delta_r S^{\circ}$ at 300 K for the reaction is :

A. 152.6 J/K-mol

B. 181.6 J/K-mol

C. - 16 J/K-mol

D. None of these

Answer: C



Watch Video Solution

8. Standard Gibb's energy of reaction ($\Delta_r G^{\circ}$) at a certain temperature can be computed $\Delta_r G^{\circ} = \Delta_r H^{\circ} - T \cdot \Delta_r S^{\circ}$ and the change in the value of $\Delta_r H^{\circ}$ and $\Delta_r S^{\circ}$ for a reaction with temperature can be computed as follows :

$$\Delta_r H_{T_2}^{\circ} - \Delta_r H_{T_1}^{\circ} = \Delta_r C_p^{\circ} (T_2 - T_1)$$

$$\Delta_r S_{T_2}^\circ - \Delta_r S_{T_1}^\circ = \Delta_r C_p^\circ \ln \left(\frac{T_2}{T_1} \right)$$

$$\Delta_r G^\circ = \Delta_r H^\circ - T \cdot \Delta_r S^\circ$$

and by $\Delta_r G^\circ = -RT \ln K_{eq}$.

Consider the following reaction : $CO(g) + 2H_2(g) \rightleftharpoons CH_3OH(g)$

Given

$$\Delta_f H^\circ (CH_3OH, g) = -201 \text{ kJ/mol}, \quad \Delta_f H^\circ (CO, g) = -114 \text{ kJ/mol}$$

$$S^\circ (CH_3OH, g) = 240 \text{ J/K-mol}, \quad S^\circ (H_2, g) = 29 \text{ JK}^{-1} \text{ mol}^{-1}$$

$$S^\circ (CO, g) = 198 \text{ J/mol-K}, \quad C_{p,m}^\circ (H_2) = 28.8 \text{ J/mol-K}$$

$$C_{p,m}^\circ (CO) = 29.4 \text{ J/mol-K}, \quad C_{p,m}^\circ (CH_3OH) = 44 \text{ J/mol-K}$$

and $\ln \left(\frac{320}{300} \right) = 0.06$, all data at 300 K

$\Delta_r H^\circ$ at 300 K for the reaction is :

A. -87 kJ/mol

B. 87 kJ/mol

C. -315 kJ/mol

D. -288 kJ/mol

Answer: A



Watch Video Solution

9. Standard Gibb's energy of reaction ($\Delta_r G^\circ$) at a certain temperature can be computed $\Delta_r G^\circ = \Delta_r H^\circ - T \cdot \Delta_r S^\circ$ and the change in the value of $\Delta_r H^\circ$ and $\Delta_r S^\circ$ for a reaction with temperature can be computed as follows :

$$\Delta_r H_{T_2}^\circ - \Delta_r H_{T_1}^\circ = \Delta_r C_p^\circ (T_2 - T_1)$$

$$\Delta_r S_{T_2}^\circ - \Delta_r S_{T_1}^\circ = \Delta_r C_p^\circ \ln. \left(\frac{T_2}{T_1} \right)$$

$$\Delta_r G^\circ = \Delta_r H^\circ - T \cdot \Delta_r S^\circ$$

and by $\Delta_r G^\circ = -RT \ln K_{eq}$.

Consider the following reaction : $CO(g) + 2H_2(g) \rightleftharpoons CH_3OH(g)$

Given :

$$\Delta_f H^\circ (CH_3OH, g) = -201 \text{ kJ/mol}, \quad \Delta_f H^\circ (CO, g) = -114 \text{ kJ/mol}$$

$$S^\circ (CH_3OH, g) = 240 \text{ J/K-mol}, \quad S^\circ (H_2, g) = 29 \text{ JK}^{-1} \text{ mol}^{-1}$$

$$S^\circ (CO, g) = 198 \text{ J/mol-K}, \quad C_{p,m}^\circ (H_2) = 28.8 \text{ J/mol-K}$$

$$C_{p,m}^\circ (CO) = 29.4 \text{ J/mol-K}, \quad C_{p,m}^\circ (CH_3OH) = 44 \text{ J/mol-K}$$

and $\ln \left(\frac{320}{300} \right) = 0.06$, all data at 300 K

$\Delta_r S^\circ$ at 320 K is :

A. 155.18 J/mol-K

B. 150.02 J/mol-K

C. 172 J/mol-K

D. None of these

Answer: D

 [Watch Video Solution](#)

10. Standard Gibb's energy of reaction ($\Delta_r G^\circ$) at a certain temperature can be computed $\Delta_r G^\circ = \Delta_r H^\circ - T \cdot \Delta_r S^\circ$ and the change in the value of $\Delta_r H^\circ$ and $\Delta_r S^\circ$ for a reaction with temperature can be computed as follows :

$$\Delta_r H_{T_2}^\circ - \Delta_r H_{T_1}^\circ = \Delta_r C_p^\circ (T_2 - T_1)$$

$$\Delta_r S_{T_2}^\circ - \Delta_r S_{T_1}^\circ = \Delta_r C_p^\circ \ln. \left(\frac{T_2}{T_1} \right)$$

$$\Delta_r G^\circ = \Delta_r H^\circ - T \cdot \Delta_r S^\circ$$

and by $\Delta_r G^\circ = -RT \ln K_{eq}$.

Consider the following reaction : $CO(g) + 2H_2(g) \rightleftharpoons CH_3OH(g)$

Given

$$\Delta_f H^\circ(\text{CH}_3\text{OH}, g) = -201 \text{ kJ/mol}, \quad \Delta_f H^\circ(\text{CO}, g) = -114 \text{ kJ/mol}$$

$$S^\circ(\text{CH}_3\text{OH}, g) = 240 \text{ J/K-mol}, \quad S^\circ(\text{H}_2, g) = 29 \text{ JK}^{-1} \text{ mol}^{-1}$$

$$S^\circ(\text{CO}, g) = 198 \text{ J/mol-K}, \quad C_{p,m}^\circ(\text{H}_2) = 28.8 \text{ J/mol-K}$$

$$C_{p,m}^\circ(\text{CO}) = 29.4 \text{ J/mol-K}, \quad C_{p,m}^\circ(\text{CH}_3\text{OH}) = 44 \text{ J/mol-K}$$

and $\ln\left(\frac{320}{300}\right) = 0.06$, all data at 300 K

$\Delta_r H^\circ$ at 320 K is :

- A. -288.86 kJ/mol
- B. -289.1 kJ/mol
- C. -87.86 kJ/mol
- D. None of these

Answer: C



Watch Video Solution

11. Consider the following reaction : $\text{CO}(g) + 2\text{H}_2(g) \rightleftharpoons \text{CH}_3\text{OH}(g)$

Given

$$\Delta_f H^\circ(\text{CH}_3\text{OH}, g) = -201 \text{ kJ/mol}, \quad \Delta_f H^\circ(\text{CO}, g) = -114 \text{ kJ/mol}$$

$$S^\circ(\text{CH}_3\text{OH}, g) = 240 \text{ J/K-mol}, \quad S^\circ(\text{H}_2, g) = 29 \text{ JK}^{-1} \text{ mol}^{-1}$$

$$S^\circ(\text{CO}, g) = 198 \text{ J/mol-K}, \quad C_{p,m}^\circ(\text{H}_2) = 28.8 \text{ J/mol-K}$$

$$C_{p,m}^\circ(\text{CO}) = 29.4 \text{ J/mol-K}, \quad C_{p,m}^\circ(\text{CH}_3\text{OH}) = 44 \text{ J/mol-K}$$

and $\ln\left(\frac{320}{300}\right) = 0.06$, all data at 300 K

$\Delta_r G^\circ$ at 320 K is :

A. -48295.2 kJ/mol

B. 240.85 kJ/mol

C. 240.85 kJ/mol

D. -81.91 kJ/mol

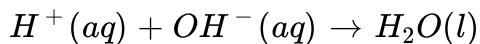
Answer: D



[Watch Video Solution](#)

12. Enthalpy of neutralization is defined as the enthalpy change when 1 mole of acid $\frac{1}{x}$ -base is completely neutralized by base $\frac{1}{y}$ -acid in dilute solution .

For Strong acid and strong base neutralization net chemical change is



$$\Delta_r H^\circ = -55.84 \text{ kJ/mol}$$

$\Delta H_{\text{ionization}}^\circ$ of aqueous solution of strong acid and strong base is zero .

when a dilute solution of weak acid or base is neutralized, the enthalpy of neutralization is somewhat less because of the absorption of heat in the ionization of the because of the absorption of heat in the ionization of the weak acid or base ,for weak acid /base

$$\Delta H_{\text{neutrization}}^\circ = \Delta H_{\text{ionization}}^\circ + \Delta_r H^\circ (H^+ + OH^- \rightarrow H_2O)$$

If enthalpy of neutralization of CH_3COOH by NaOH is -49.86 kJ/mol then enthalpy of ionization of CH_3COOH is:

- (a) 5.98 kJ/mol
- (b) -5.98 kJ/mol
- (c) 105.7 kJ/mol
- (d) None of these

A. 5.98 kJ/mol

B. -5.98 kJ/mol

C. 105.7 kJ/mol

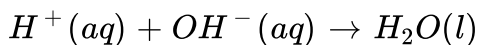
D. None of these

Answer: A

 [Watch Video Solution](#)

13. Enthalpy of neutralization is defined as the enthalpy change when 1 mole of acid /base is completely neutralized by base /acid in dilute solution .

For Strong acid and strong base neutralization net chemical change is



$$\Delta_r H^\circ = - 55.84 \text{KJ/mol}$$

$\Delta H_{\text{ionization}}^\circ$ of aqueous solution of strong acid and strong base is zero .

when a dilute solution of weak acid or base is neutralized, the enthalpy of neutralization is somewhat less because of the absorption of heat in the ionization of the because of the absorption of heat in the ionization of the weak acid or base ,for weak acid /base

$$\Delta H_{\text{neutrlzation}}^\circ = \Delta H_{\text{ionization}}^\circ + \Delta_r H^\circ (H^+ + OH^- \rightarrow H_2O)$$

What is ΔH° for complete neutralization of strong diacidic base

$A(OH)_2$ by HNO_3 ?

A. -55.84 kJ/mol

B. 111.68 kJ/mol

C. 55.84 kJ/mol

D. None of these

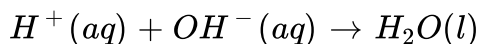
Answer: B



Watch Video Solution

14. Enthalpy of neutralization is defined as the enthalpy change when 1 mole of acid /base is completely neutralized by base /acid in dilute solution .

For Strong acid and strong base neutralization net chemical change is



$$\Delta_r H^\circ = -55.84 \text{ KJ/mol}$$

$\Delta H_{\text{ionization}}^\circ$ of aqueous solution of strong acid and strong base is zero .

when a dilute solution of weak acid or base is neutralized, the enthalpy of neutralization is somewhat less because of the absorption of heat in the ionization of the because of the absorption of heat in the ionization of the weak acid or base ,for weak acid /base

$$\Delta H_{\text{neutrlzation}}^{\circ} = \Delta H_{\text{ionization}}^{\circ} + \Delta_r H^{\circ} (H^{+} + OH^{-} \rightarrow H_2O)$$

under same conditions ,how many mL of 0.1 m NaOH and 0.05 M H_2A (strong diprotic acid) solution should be mixed for a total volume of 100mL to producce the hight rise in temperature ?

A. 25: 75

B. 50: 50

C. 75: 25

D. 66.66: 33.33

Answer: B



Watch Video Solution

15. Gibbs Helmholtz equation relates the enthalpy, entropy and free energy change of the process at constant pressure and temperature as

$$\Delta G = \Delta H - T\Delta S \quad (\text{at constant } P, T)$$

In General the magnitude of ΔH does not change much with the change in temperature but the terms $T\Delta S$ changes appreciably. Hence in some process spontaneity is very much dependent on temperature and such processes are generally known as entropy driven process.

For the reaction at 298 K, $A_2B_4 \rightarrow 2AB_2$

$\Delta H = 2 \text{ kJ}$ and $\Delta S = 20 \text{ J/K}$ at constant P and T, the reaction will be

- A. spontaneous and entropy driven
- B. spontaneous and enthalpy driven
- C. non-spontaneous
- D. at equilibrium

Answer: A



[Watch Video Solution](#)

16. Gibbs Helmholtz equation relates the enthalpy, entropy and free energy change of the process at constant pressure and temperature as

$$\Delta G = \Delta H - T\Delta S \quad (\text{at constant } P, T)$$

In General the magnitude of ΔH does not change much with the change in temperature but the terms $T\Delta S$ changes appreciably. Hence in some process spontaneity is very much dependent on temperature and such processes are generally known as entropy driven process.

When $CaCO_3$ is heated to a high temperature it decomposes into CaO and CO_2 , however it is quite stable at room temperature. It can be explained by the fact that

- A. $\Delta_r H$ dominates the term $T\Delta S$ at high temperature
- B. the term $T\Delta S$ dominates the $\Delta_r H$ at high temperature
- C. at high temperature both $\Delta_r S$ and $\Delta_r H$ becomes negative
- D. thermodynamics can not say anything about spontaneity

Answer: B



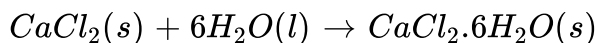
[Watch Video Solution](#)

17. Gibbs Helmholtz equation relates the enthalpy, entropy and free energy change of the process at constant pressure and temperature as

$$\Delta G = \Delta H - T\Delta S \quad (\text{at constant } P, T)$$

In General the magnitude of ΔH does not change much with the change in temperature but the terms $T\Delta S$ changes appreciably. Hence in some process spontaneity is very much dependent on temperature and such processes are generally known as entropy driven process.

The Dissolution of $CaCl_2 \cdot 6H_2O$ in a large volume of water is endothermic to the extent of $3.5 \text{ kcal mol}^{-1}$ and ΔH for the reaction is $-23.2 \text{ kcal mol}^{-1}$.



Select the correct statement :

- A. $\Delta H_{\text{solution}}$ for anhydrous $CaCl_2$ is -19.7 kcal/mol and the process is enthalpy driven
- B. $\Delta H_{\text{solution}}$ for anhydrous $CaCl_2$ is -19.7 kcal/mol and the process is entropy driven
- C. Dissolution of $CaCl_2 \cdot 6H_2O$ in water is enthalpy driven process

D. The $\Delta_r S$ the reaction $CaCl_2(s) + 6H_2O(l) \rightarrow CaCl_2 \cdot 6H_2O(s)$ is

negative

Answer: A



Watch Video Solution

18. Identify the intensive quantities from the following :

(a) Enthalpy

(b) Temperature

(c) Pressure

(d) Mass

A. Enthalpy

B. Temperature

C. Pressure

D. Mass

Answer: B::C



[Watch Video Solution](#)

19. Identify the extensive quantities from the following :

- A. Gibb's energy
- B. Entropy
- C. Refractive index
- D. Specific heat

Answer: A::B



[Watch Video Solution](#)

20. Identify the state functions from the following :

- A. Heat
- B. Work
- C. Enthalpy

D. Free energy

Answer: C

 [Watch Video Solution](#)

21. Which of the following statements is/are correct as per IUPAC sign convention?

- A. The work done by the system on the surrounding is negative
- B. The work done by the surrounding on the system is positive
- C. The heat absorbed by the system from the surrounding is positive
- D. The heat absorbed by the surrounding from the system is positive

Answer: A::B::C

 [Watch Video Solution](#)

22. In an isothermal irreversible expansion of an ideal gas as per IUPAC sign convention :

A. $\Delta U = 0$

B. $\Delta H = 0$

C. $w = -nRT \ln. \frac{P_1}{P_2}$

D. $w = -q$

Answer: A::B::D



Watch Video Solution

23. In reversible isothermal expansion of an ideal gas :

A. $w = 0$

B. $U_1 = U_2$

C. $H_1 = H_2$

D. $q = nRT \ln. \frac{V_2}{V_1}$

Answer: B::C::D



Watch Video Solution

24. An adiabatic process is that process in which :

a.energy is transferred as heat

b.no energy is transferred as heat

c. $\Delta U = w$

d.the temp. of gas increases in a reversible compression

A. energy is transferred as heat

B. no energy is transferred as heat

C. $\Delta U = w$

D. the temp. of gas increases in a reversible compression

Answer: B::C::D



Watch Video Solution

25. In adiabatic process, the work involved during expansion or compression of an ideal gas is given by :

A. $nC_v\Delta T$

B. $\frac{nR}{\gamma - 1}(T_2 - T_1)$

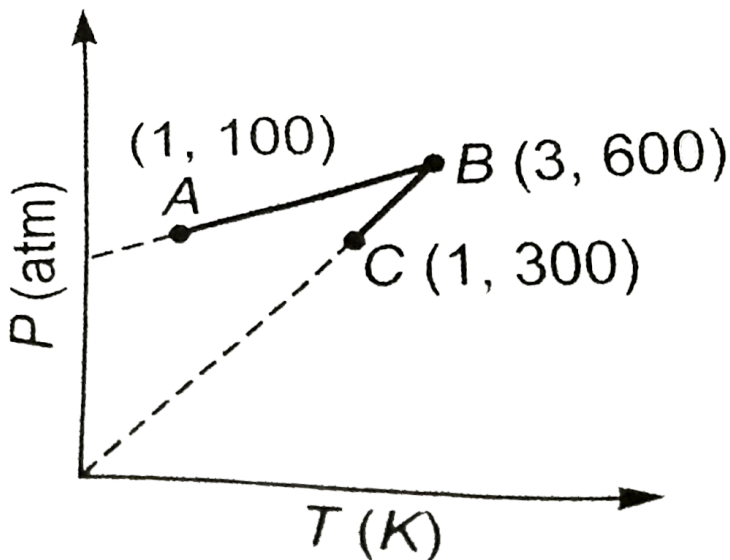
C. $-nRP_{\text{ext}} \left[\frac{T_2P_1 - T_1P_2}{P_1P_2} \right]$

D. $-2.303 RT \log \frac{V_2}{V_1}$

Answer: A::B::C



Watch Video Solution



26.

One mole of an ideal gas is subjected to a two step reversible process (A-B and B-C). The pressure at A and C is same. Mark the correct statement(s)

:

- A. Work involved in the path AB is zero
- B. In the path AB work will be done on the gas by the surrounding
- C. Volume of gas at C = $3 \times$ volume of gas at A
- D. Volume of gas at B is 16.42 litres

Answer: C::D



Watch Video Solution

27. Assume ideal gas behaviour for all the gases considered and neglect vibrational degrees of freedom. Separate equimolar sample. Separate equimolar samples of Ne, O_2 , CO_2 and SO_2 were subjected to a two process as mentioned. Initially all are at same state of temperature and pressure.

Step I \rightarrow All undergo reversible adiabatic expansion to attain same final volume, which is double the original volume thereby causing the decreases in their temperature.

Step II \rightarrow After step I all are given appropriate amount of heat isochorically to restore the original temperature.

Mark the correct option(s) :

A. Due to step I only, the decrease in temperature will be maximum for

Ne

- B. During step II, heat given will be minimum for SO_2
- C. There will be no change in internal energy for any of the gas after both the steps of process are completed
- D. The P-V graph of O_2 and CO_2 will be same

Answer: A::C::D

 [Watch Video Solution](#)

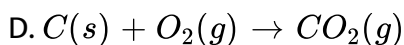
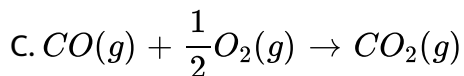
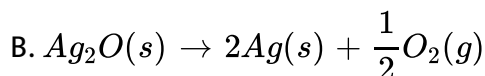
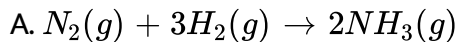
28. Which of the following is/are correct?

- A. $\Delta H = \Delta U + \Delta(PV)$ when P and V both changes
- B. $\Delta H = \Delta U + P\Delta V$ when pressure is constant
- C. $\Delta H = \Delta U + V\Delta P$ when volume is constant
- D. $\Delta H = \Delta U + P\Delta V + V\Delta P$ when P and V both changes

Answer: A::B::C

 [Watch Video Solution](#)

29. $\Delta H < \Delta U$ for the reaction(s) :



Answer: A::C



Watch Video Solution

30. Which of the following conditions may lead to a non-spontaneous change?

a. ΔH and ΔS both $+ve$

b. $\Delta H = -ve$, $\Delta S = +ve$

c. $\Delta H = +ve$, $\Delta S = -ve$

d. $\Delta H = -ve$, $\Delta S = -ve$

A. ΔH and ΔS both $+ve$

B. $\Delta H = -ve, \Delta S = +ve$

C. $\Delta H = +ve, \Delta S = -ve$

D. $\Delta H = -ve, \Delta S = -ve$

Answer: A::C::D

 [Watch Video Solution](#)

31. For a process to be spontaneous :

A. $(\Delta G_{\text{system}})_{T,P} = 0$

B. $\Delta S_{\text{system}} + \Delta S_{\text{surrounding}} > 0$

C. $\Delta S_{\text{system}} + \Delta S_{\text{surrounding}} < 0$

D. $(\Delta G_{\text{system}})_{T,P} < 0$

Answer: B::D

 [Watch Video Solution](#)

32. The normal boiling point of a liquid X is 400 K. Which of the following statement is true about the process $X(l) \rightarrow X(g)$?

- A. at 400 K and 1 atm pressure $\Delta G = 0$
- B. at 400 K and 2 atm pressure $\Delta G = +ve$
- C. at 400 K and 0.1 atm pressure $\Delta G = -ve$
- D. at 410 K and 1 atm pressure $\Delta G = +ve$

Answer: A::B::C



Watch Video Solution

33. When ice melts at $1^\circ C$:

- (a) an increase in entropy
- (b) a decrease in enthalpy
- (c) a decrease in free energy
- (d) process is spontaneous

- A. an increase in entropy
- B. a decrease in enthalpy
- C. a decrease in free energy
- D. process is spontaneous

Answer: A::C::D

 [Watch Video Solution](#)

34. The value of $\Delta H_{\text{transition}}$ of C (graphite) \rightarrow C (diamond) is 1.9 kJ/mol at 25°C . Entropy of graphite is higher than entropy of diamond. This implies that :

- A. C (diamond) is more thermodynamically stable than C (graphite) at 25°C
- B. C (graphite) is more thermodynamically stable than C (diamond) at 25°C
- C. diamond will provide more heat on complete combustion at 25°C

D. $\Delta G_{\text{transition}}$ of C (diamond) \rightarrow C (graphite) is -ve

Answer: B::C::D

 [Watch Video Solution](#)

35. Which of the following statement(s) is/are false?

A. All adiabatic process are isentropic (or isentropic) processes

B. When $(\Delta G_{\text{system}})_{T,P} < 0$, the reaction must be exothermic

C. $dG = VdP - SdT$ is applicable for closed system, both PV and non-PV work

D. The heat of vaporisation of water at $100^\circ C$ is 40.6 kJ/mol. When 9 gm of water vapour condenses to liquid at $100^\circ C$ and 1 atm, then

$$\Delta S_{\text{system}} = 54.42 \text{ J/K}$$

Answer: A::B::C::D

 [Watch Video Solution](#)

36. Which of the following statement(s) is/are true?

A. $\Delta U = 0$ for combustion of $C_2H_6(g)$ in a sealed rigid adiabatic container

B. $\Delta_f H^\circ$ (S, monoclinic) $\neq 0$

C. If dissociation energy of $CH_4(g)$ is 1656 kJ/mol and $C_2H_6(g)$ is 2812 kJ/mol , then value of C-C bond energy will be 328 kJ/mol

D. If

$$\Delta H_f(H_2O, g) = -242 \text{ kJ/mol}, \Delta H_{\text{vap}}(H_2O, l) = 44 \text{ kJ/mol}$$

then, $\Delta_f H^\circ(OH^-, aq.)$ will be -142 kJ/mol

Answer: A:C



Watch Video Solution

37. From the following data, mark the option(s) where ΔH is correctly written for the given reaction.



$$\Delta H = -57.3 \text{ kJ}$$

$$\Delta H_{\text{solution}} HA(g) = -70.7 \text{ kJ/mole}$$

$$\Delta H_{\text{solution}} BOH(g) = -20 \text{ kJ/mole}$$

$\Delta H_{\text{ionization}}$ of $HA = 15 \text{ kJ/mole}$ and BOH is a strong base.

$\Delta H_{\text{ionization}}$ of $HA = 15 \text{ kJ/mol}$ and BOH is a strong base.

	Reaction	ΔH_r (kJ/mol)
(a)	$HA(aq) + BOH(aq) \rightarrow BA(aq) + H_2O$	-42.3
(b)	$HA(g) + BOH(g) \rightarrow BA(aq) + H_2O$	-93
(c)	$HA(g) \rightarrow H^+(aq) + A^-(aq)$	-55.7
(d)	$B^+(aq) + OH^-(aq) \rightarrow BOH(aq)$	-20

23. Select the correct statement(s).

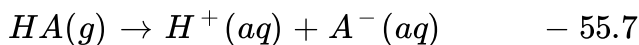
A. Reaction $\Delta_r H$ (kJ/mol)



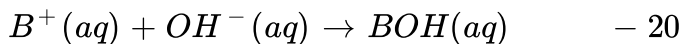
B. Reaction $\Delta_r H$ (kJ/mol)



C. Reaction $\Delta_r H$ (kJ / mol)



D. Reaction $\Delta_r H$ (kJ / mol)



Answer: A::B::C

 [Watch Video Solution](#)

38. Select correct statement(s)

- A. An adiabatic system can exchange energy with its surroundings.
- B. A thermodynamic property which is intensive is additive.
- C. Work done may be zero in a cyclic process.
- D. For a simple compressible substance, the relation $dq - P \cdot Dv = 0$ is true for any cycle involving mechanical work only.

Answer: A::C::D



Watch Video Solution

39. For an isolated system, the entropy :

- A. either increases or remains constant
- B. either decreases or remains constant
- C. can never decrease
- D. can never increase

Answer: A:C



Watch Video Solution

40. The normal boiling point of a liquid X is 400 K. ΔH_{vap} at normal boiling point is 40 kJ/mol. Select correct statement(s) :

- A. $\Delta S_{\text{vaporisation}} < 100 \text{ J/mol.K}$ at 400 K and 2 atm
- B. $\Delta S_{\text{vaporisation}} < 10 \text{ J/mol.K}$ at 400 K and 1 atm

C. $\Delta G_{\text{vaporisation}} < 0$ at 410 K and 1 atm

D. $\Delta U = 43.32$ kJ/mol.K at 400 K and 1 atm

Answer: A::C

 [Watch Video Solution](#)

41. Select incorrect statement(s)

A. A closed system with all adiabatic boundaries must be an isolated system

B. Total heat exchange in a cyclic process may be zero

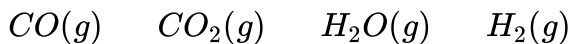
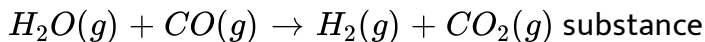
C. Entropy of a closed system is maximum at equilibrium

D. Molar Gibb's Energy is an extensive property

Answer: A::C::D

 [Watch Video Solution](#)

42. Select correct statement(s) for the reaction



$\Delta_f H_{400}^\circ$ (kcal mol ⁻¹)	-25	-95	-55	0
--	-----	-----	-----	---

S_{400}° (cal mol ⁻¹ K ⁻¹)	45	50	40	30
--	----	----	----	----

- A. Reaction is enthalpy driven
- B. Reaction is entropy driven
- C. Reaction is spontaneous at 400 K
- D. Reaction is non-spontaneous at 400 K

Answer: A:C



Watch Video Solution

43. Match the following columns

Column-I	Column-II
(A) Reversible cooling of an ideal gas at constant volume	(P) $w = 0; q < 0; \Delta U < 0$
(B) Reversible isothermal expansion of an ideal gas	(Q) $w < 0; q > 0; \Delta U > 0$
(C) Adiabatic expansion of non-ideal gas into vacuum	(R) $w = 0; q = 0; \Delta U = 0$
(D) Reversible melting of sulphur at normal melting point	(S) $w < 0; q > 0; \Delta U = 0$

 Watch Video Solution

44. Match the following columns

Column-I	Column-II
(A) Adiabatic process	(P) $q = 0$
(B) Isothermal process	(Q) $\Delta H = 0$
(C) Isoenthalpic process	(R) $\Delta T = 0$
(D) Isoentropic process	(S) $\Delta S = 0$

 Watch Video Solution

45. Match the following Column - I and Column - II

Column-I
(A) Reversible isothermal expansion of an ideal gas
(B) Reversible adiabatic compression of an ideal gas
(C) Irreversible adiabatic expansion of an ideal gas
(D) Irreversible isothermal compression of an ideal gas

Column-II
(P) $w = -2.303 nRT \log \left(\frac{V_2}{V_1} \right)$
(Q) $PV^\gamma = \text{constant}$
(R) $w = \frac{nR}{(\gamma - 1)} (T_2 - T_1)$
(S) $\Delta H = 0$

 [Watch Video Solution](#)

46. Match the following columns

Column-I
(A) $\text{PCl}_5(\text{g}) \rightleftharpoons \text{PCl}_3(\text{g}) + \text{Cl}_2(\text{g})$ in a closed system
(B) $2\text{HI}(\text{g}) \rightleftharpoons \text{H}_2(\text{g}) + \text{I}_2(\text{g})$ in a closed system
(C) $\text{N}_2(\text{g}) + 3\text{H}_2(\text{g}) \rightleftharpoons 2\text{NH}_3(\text{g})$ in a closed system
(D) $\text{CO}(\text{g}) + \frac{1}{2}\text{O}_2(\text{g}) \rightleftharpoons \text{CO}_2(\text{g})$ in an isolated system

Column-II
(P) $\Delta H < \Delta U$
(Q) $\Delta H = \Delta U \neq 0$
(R) $\Delta H > \Delta U$
(S) $\Delta U = 0$

 [Watch Video Solution](#)

Column-I (Process)

- (A) Reversible isothermal compression of an ideal gas
 (B) Isothermal free expansion ($P_{\text{ext}} = 0$) of an ideal gas
 (C) Reversible adiabatic expansion of an ideal gas
 (D) Reversible ideal gas expansion

Column-II (Entropy Change)

- (P) $\Delta S_{\text{system}} > 0$
 (Q) $\Delta S_{\text{system}} < 0$
 (R) $\Delta S_{\text{system}} = 0$
 (S) Information insufficient

47.

[View Text Solution](#)**Column-I (Process)**

- (A) Reversible isothermal ideal gas expansion
 (B) Reversible adiabatic ideal gas compression
 (C) Adiabatic free expansion ($P_{\text{ext}} = 0$) of an ideal gas
 (D) Irreversible isothermal ideal gas compression

Column-II (Entropy change)

- (P) $\Delta S_{\text{surrounding}} = 0$
 (Q) $\Delta S_{\text{surrounding}} < 0$
 (R) $\Delta S_{\text{surrounding}} > 0$
 (S) $\Delta S_{\text{system}} = 0$

48.

[View Text Solution](#)

49. Match the following columns

Column-I

- (A) $(\Delta G_{\text{system}})_{T, p} = 0$
 (B) $\Delta S_{\text{system}} + \Delta S_{\text{surrounding}} > 0$
 (C) $\Delta S_{\text{system}} + \Delta S_{\text{surrounding}} < 0$
 (D) $(\Delta G_{\text{system}})_{T, p} > 0$

Column-II

- (P) Process is in equilibrium
 (Q) Process is nonspontaneous
 (R) Process is spontaneous
 (S) System is unable to do useful work



50. Match the following columns

Column-I	Column-II
(A) $(\Delta G_{\text{system}})_{T, P}$	(P) $nR \ln \left(\frac{V_2}{V_1} \right)$
(B) Work done in reversible isothermal ideal gas expansion	(Q) $nRT \ln \left(\frac{P_2}{P_1} \right)$
(C) ΔG for reversible isothermal expansion of an ideal gas	(R) $-nFE$
(D) ΔS_{gas} for isothermal expansion of an ideal gas	(S) $nR \ln \left(\frac{P_1}{P_2} \right)$

 Watch Video Solution

51. Match the following columns

Column-I	Column-II
(A) Heating of an ideal gas at constant pressure	(P) $\Delta H = nC_{p, m} \Delta T \neq 0$
(B) Compression of liquid at constant temperature	(Q) $\Delta U = 0$
(C) Reversible process for an ideal gas at constant temperature	(R) $\Delta G = V \Delta P$
(D) Adiabatic free expansion of an ideal gas	(S) $\Delta G = nRT \ln \left(\frac{P_2}{P_1} \right)$

 Watch Video Solution

52. Match the following columns

Column-I
(Sign of ΔH and ΔS respectively)
(A) - & -
(B) - & +
(C) + & +
(D) + & -

Column-II
(Nature of reaction)
(P) Spontaneous only at low temperature
(Q) Spontaneous only at high temperature
(R) Spontaneous at all temperature
(S) Non-spontaneous at all temperature

 Watch Video Solution

53. Match the following columns

Column-I
(A) Reversible adiabatic compression
(B) Reversible vaporisation of liquid
(C) $2N(g) \rightarrow N_2(g)$
(D) $MgCO_3(s) \xrightarrow{\Delta} MgO(s) + CO_2(g)$

Column-II
(P) $\Delta S_{\text{system}} > 0$
(Q) $\Delta S_{\text{system}} < 0$
(R) $\Delta S_{\text{surrounding}} < 0$
(S) $\Delta S_{\text{surrounding}} = 0$

 Watch Video Solution

54.

Column-I
(A) $H^+(aq)$
(B) $H(g)$
(C) $H_2(g)$
(D) $C(s, \text{diamond})$

Column-II
(P) $\Delta_f H^\circ = 0$
(Q) $\Delta_f H^\circ \neq 0$
(R) $\Delta_f G^\circ = 0$
(S) $\Delta_f S^\circ < 0$

 View Text Solution

55. Match the following columns

Column-I (Partial derivative)	Column-II (Thermodynamic variable)
(A) $\left(\frac{\partial U}{\partial T}\right)_V$	(P) C_P
(B) $\left(\frac{\partial H}{\partial T}\right)_P$	(Q) C_V
(C) $\left(\frac{\partial G}{\partial T}\right)_P$	(R) $-S$
(D) $\left(\frac{\partial G}{\partial P}\right)_T$	(S) V

 Watch Video Solution

56. Match the following columns

Column-I	Column-II
(A) $C(s, \text{graphite}) + O_2(g) \rightarrow CO_2(g)$	(P) $\Delta H^\circ_{\text{combustion}}$
(B) $C(s, \text{graphite}) \rightarrow C(g)$	(Q) $\Delta H^\circ_{\text{formation}}$
(C) $CO(g) + \frac{1}{2} O_2(g) \rightarrow CO_2(g)$	(R) $\Delta H^\circ_{\text{atomization}}$
(D) $CH_4(g) \rightarrow C(g) + 4H(g)$	(S) $\Delta H^\circ_{\text{sublimation}}$

 Watch Video Solution

57.

Column-I	Column-II
(A) $O_2(g)$	(P) $\Delta_f H^\circ = +ve; \Delta_f S^\circ = +ve$
(B) $O_3(g)$	(Q) $\Delta_f H^\circ = -ve; \Delta_f S^\circ = -ve$
(C) $Br_2(l)$	(R) $\Delta_f H^\circ = +ve; \Delta_f S^\circ = -ve$
(D) $H_2O(l)$	(S) $\Delta_f H^\circ = 0; \Delta_f S^\circ = 0$



[View Text Solution](#)

58. Statement-I Heat and work are "definite quantities".

Statement-II Heat and work are not properties of a system. Their values depend on the path of the process and vary accordingly.

- A. If both the statements are TRUE and STATEMENT-2 is the correct explanation of STATEMENT-1
- B. If both the statements are TRUE but STATEMENT-2 is NOT the correct explanation of STATEMENT-1
- C. If STATEMENT-1 is TRUE and STATEMENT-2 is FALSE
- D. If STATEMENT-1 is FALSE and STATEMENT-2 is TRUE

Answer: D



[Watch Video Solution](#)

59. There is no change in internal energy for an ideal gas at constant temperature.

Internal energy of an ideal gas is a function of temperature only.

- A. If both the statements are TRUE and STATEMENT-2 is the correct explanation of STATEMENT-2
- B. If both the statements are TRUE but STATEMENT-2 is NOT the correct explanation of STATEMENT-2
- C. If STATEMENT-1 is TRUE and STATEMENT-2 is FALSE
- D. If STATEMENT-1 is FALSE and STATEMENT-2 is TRUE

Answer: A



[Watch Video Solution](#)

60. Assertion: The heat absorbed during the isothermal expansion of an ideal gas against vacuum is zero.

Reason: The volume occupied by the molecules of an ideal gas is zero.

- A. If both the statements are TRUE and STATEMENT-2 is the correct explanation of STATEMENT-3
- B. If both the statements are TRUE but STATEMENT-2 is NOT the correct explanation of STATEMENT-3
- C. If STATEMENT-1 is TRUE and STATEMENT-2 is FALSE
- D. If STATEMENT-1 is FALSE and STATEMENT-2 is TRUE

Answer: B



[Watch Video Solution](#)

61. ΔH and ΔU are the same of the reaction, $N_2(g) + O_2(g) \rightleftharpoons 2NO(g)$

All reactants and products are gases where all gases are ideal.

- A. If both the statements are TRUE and STATEMENT-2 is the correct explanation of STATEMENT-1
- B. If both the statements are TRUE but STATEMENT-2 is NOT the correct explanation of STATEMENT-1
- C. If STATEMENT-1 is TRUE and STATEMENT-2 is FALSE
- D. If STATEMENT-1 is FALSE and STATEMENT-2 is TRUE

Answer: B

 [Watch Video Solution](#)

62. Statement -1: The magnitude of the work involved in an isothermal expansion is greater than that involved in an adiabatic expansion.

Statement -2: P-v curve (P on y-axis and V on X-axis) decrease more rapidly for reversible adiabatic expansion compared to reversible isothermal expansion starting from same initial state.

- A. If both the statements are TRUE and STATEMENT-2 is the correct explanation of STATEMENT-5
- B. If both the statements are TRUE but STATEMENT-2 is NOT the correct explanation of STATEMENT-5
- C. If STATEMENT-1 is TRUE and STATEMENT-2 is FALSE
- D. If STATEMENT-1 is FALSE and STATEMENT-2 is TRUE

Answer: A



Watch Video Solution

63. Statement -1: Entropy change in reversible adiabatic expansion of an ideal gas is zero.

Statement-2: The increase in entropy due to volume increase just compensates the decrease in entropy due to fall in temperature.

- A. If both the statements are TRUE and STATEMENT-2 is the correct explanation of STATEMENT-6

B. If both the statements are TRUE but STATEMENT-2 is NOT the correct explanation of STATEMENT-6

C. If STATEMENT-1 is TRUE and STATEMENT-2 is FALSE

D. If STATEMENT-1 is FALSE and STATEMENT-2 is TRUE

Answer: A

 [Watch Video Solution](#)

64. There cannot be chemical equilibrium in an open system.

There is no fixed mass in an open system.

A. If both the statements are TRUE and STATEMENT-2 is the correct explanation of STATEMENT-7

B. If both the statements are TRUE but STATEMENT-2 is NOT the correct explanation of STATEMENT-7

C. If STATEMENT-1 is TRUE and STATEMENT-2 is FALSE

D. If STATEMENT-1 is FALSE and STATEMENT-2 is TRUE

Answer: A

 [Watch Video Solution](#)

65. Statement -1: The Standard free energy changes of all spontaneously occurring reactions are negative .

Statement-2: The standard free energies of the elements in their standard states at 1 bar and 2985K aare taken aszero.

A. If both the statements are TRUE and STATEMENT-2 is the correct explanation of STATEMENT-8

B. If both the statements are TRUE but STATEMENT-2 is NOT the correct explanation of STATEMENT-8

C. If STATEMENT-1 is TRUE and STATEMENT-2 is FALSE

D. If STATEMENT-1 is FALSE and STATEMENT-2 is TRUE

Answer: B



Watch Video Solution

66. Statement -1: Enthalpy and entropy of any elements substance in the standard states are taken as zero .

Statement-2: At absolute zero , particles of the perfectly crystalline substance become completely motionless.

(a) If both the statements are TRUE and STATEMENT-2 is the correct explanation of STATEMENT-1

(b) If both the statements are TRUE but STATEMENT-2 is NOT the correct explanation of STATEMENT-1

(c) If STATEMENT-1 is TRUE and STATEMENT-2 is FALSE

(d) If STATEMENT-1 is FALSE and STATEMENT-2 is TRUE

A. If both the statements are TRUE and STATEMENT-2 is the correct explanation of STATEMENT-1

B. If both the statements are TRUE but STATEMENT-2 is NOT the correct explanation of STATEMENT-9

C. If STATEMENT-1 is TRUE and STATEMENT-2 is FALSE

D. If STATEMENT-1 is FALSE and STATEMENT-2 is TRUE

Answer: D

 [Watch Video Solution](#)

67. Statement-1: A reaction which is spontaneous and accompanied by decrease of randomness must be exothermic.

Statement -2: All exothermic reaction that are accompanied by decrease of randomness.

A. If both the statements are TRUE and STATEMENT-2 is the correct explanation of STATEMENT-10

B. If both the statements are TRUE but STATEMENT-2 is NOT the correct explanation of STATEMENT-10

C. If STATEMENT-1 is TRUE and STATEMENT-2 is FALSE

D. If STATEMENT-1 is FALSE and STATEMENT-2 is TRUE

Answer: C

 [Watch Video Solution](#)

68. Assertion (A): May endothermic reactions that are not spontaneous at room temperature become spontaneous at high temperature.

Reason (R) : Entropy of the system increases with increase in temperature.

A. If both the statements are TRUE and STATEMENT-2 is the correct explanation of STATEMENT-11

B. If both the statements are TRUE but STATEMENT-2 is NOT the correct explanation of STATEMENT-11

C. If STATEMENT-1 is TRUE and STATEMENT-2 is FALSE

D. If STATEMENT-1 is FALSE and STATEMENT-2 is TRUE

Answer: B

 [Watch Video Solution](#)

69. Statement-1: Decrease of free energy during the process under constant temperature and pressure provides a measure of its spontaneity.

Statement -2: A spontaneous change must have +ve sign of ΔS_{system} .

- A. If both the statements are TRUE and STATEMENT-2 is the correct explanation of STATEMENT-12
- B. If both the statements are TRUE but STATEMENT-2 is NOT the correct explanation of STATEMENT-12
- C. If STATEMENT-1 is TRUE and STATEMENT-2 is FALSE
- D. If STATEMENT-1 is FALSE and STATEMENT-2 is TRUE

Answer: C

 [Watch Video Solution](#)

70. Statement 1 $|\Delta_f H|$ of $(H_2O, l) > |\Delta_f H|$ of (H_2O, g)

Statement 2 $\Delta H_{\text{condensation}}$ is negative.

(a) If both the statements are TRUE and STATEMENT-2 is the correct explanation of STATEMENT-1

(b) If both the statements are TRUE but STATEMENT-2 is NOT the correct explanation of STATEMENT-1

(c) If STATEMENT-1 is TRUE and STATEMENT-2 is FALSE

(d) If STATEMENT-1 is FALSE and STATEMENT-2 is TRUE

A. If both the statements are TRUE and STATEMENT-2 is the correct explanation of STATEMENT-1

B. If both the statements are TRUE but STATEMENT-2 is NOT the correct explanation of STATEMENT-1

C. If STATEMENT-1 is TRUE and STATEMENT-2 is FALSE

D. If STATEMENT-1 is FALSE and STATEMENT-2 is TRUE

Answer: A



Watch Video Solution

71. All combustion reactions are exothermic.

Enthalpies of products are greater than enthalpies of reactants

$$(\sum v_p \Delta_f H(P) > \sum v_R \Delta_f H(R))$$

- A. If both the statements are TRUE and STATEMENT-2 is the correct explanation of STATEMENT-1
- B. If both the statements are TRUE but STATEMENT-2 is NOT the correct explanation of STATEMENT-1
- C. If STATEMENT-1 is TRUE and STATEMENT-2 is FALSE
- D. If STATEMENT-1 is FALSE and STATEMENT-2 is TRUE

Answer: C



Watch Video Solution

72. Enthalpy of neutralization of CH_3COOH by NaOH is less than that of HCl by NaOH.

Enthalpy of neutralization of CH_3COOH is less because of the absorption of heat in the ionization process.

- A. If both the statements are TRUE and STATEMENT-2 is the correct explanation of STATEMENT-1
- B. If both the statements are TRUE but STATEMENT-2 is NOT the correct explanation of STATEMENT-1
- C. If STATEMENT-1 is TRUE and STATEMENT-2 is FALSE
- D. If STATEMENT-1 is FALSE and STATEMENT-2 is TRUE

Answer: A



[Watch Video Solution](#)

73. Assertion: – Internal energy of a real gas may change during expansion at const. temperature.

Reason: – Internal energy of a real gas is a function of T & P .

- A. If both the statements are TRUE and STATEMENT-2 is the correct explanation of STATEMENT-1
- B. If both the statements are TRUE but STATEMENT-2 is NOT the correct explanation of STATEMENT-1
- C. If STATEMENT-1 is TRUE and STATEMENT-2 is FALSE
- D. If STATEMENT-1 is FALSE and STATEMENT-2 is TRUE

Answer: A



[Watch Video Solution](#)

74. Work is a state function which is expressed in joule.

work appears only at the boundary of the system.

- A. If both the statements are TRUE and STATEMENT-2 is the correct explanation of STATEMENT-1
- B. If both the statements are TRUE but STATEMENT-2 is NOT the correct explanation of STATEMENT-1
- C. If STATEMENT-1 is TRUE and STATEMENT-2 is FALSE
- D. If STATEMENT-1 is FALSE and STATEMENT-2 is TRUE

Answer: D

 [Watch Video Solution](#)

75. The expansion of a gas into an evacuated space takes place non-spontaneously.

A process in which all steps cannot be retraced by themselves is called a spontaneous process.

- A. If both the statements are TRUE and STATEMENT-2 is the correct explanation of STATEMENT-18

B. If both the statements are TRUE but STATEMENT-2 is NOT the correct explanation of STATEMENT-18

C. If STATEMENT-1 is TRUE and STATEMENT-2 is FALSE

D. If STATEMENT-1 is FALSE and STATEMENT-2 is TRUE

Answer: D

 [Watch Video Solution](#)

76. A perfect gas undergoes a reversible adiabatic expansion from (300 K, 200 atm) to (90 K, 10 atm). Find the atomicity of gas.

 [Watch Video Solution](#)

77. 5 mole of an ideal gas at temp. T are compressed isothermally from 12 atm. To 24 atm. Calculate the value of $\ln r$. Where,

$$r = \frac{\text{Work done along reversible process}}{\text{Work done along single step irreversible process}} \quad (\text{Given : } \ln 2 = 0.7)$$

 [Watch Video Solution](#)

78. A diatomic ideal gas is expanded according to $PV^3 = \text{constant}$, under very high temperature (Assume vibration mode active). Calculate the molar heat capacity of gas (in cal / mol K) in this process.

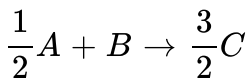
 [Watch Video Solution](#)

79. A heat engine is operating between 500 K to 300 K and it absorbs 10 kcal of heat from 500 K reservoir reversibly per cycle. Calculate the work done (in kcal) per cycle.

 [Watch Video Solution](#)

80. Molar heat capacities at constant pressure for A, B and C are 3, 1.5 and 2 J/K mol. The enthalpy of reaction and entropy of reaction, $A + 2 B \rightarrow 3 C$ are 20 kJ/mol and 20 J/K mol at 300 K. Calculate ΔG (in kJ / mol) for the

reaction,



 [Watch Video Solution](#)

81. Standard molar enthalpy of combustion of glucose is -2880 kJ. If only 25% of energy is available for muscular work and 1.0 km walk consumes 90 kJ of energy, what maximum distance (in km) a person can walk after eating 90 g of glucose.

 [Watch Video Solution](#)

82. Given $C_2H_2(g) + H_2(g) \rightarrow C_2H_4(g) : \Delta H^\circ = -175 \text{ kJ mol}^{-1}$

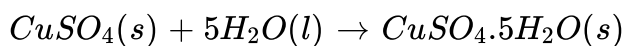
$\Delta H_{f(C_2H_4,g)}^\circ = 50 \text{ kJ mol}^{-1}$, $\Delta H_{f(H_2O,l)}^\circ = -280 \text{ kJ mol}^{-1}$, $\Delta H_{f(CO_2,g)}^\circ = -393 \text{ kJ mol}^{-1}$

If ΔH° is enthalpy of combustion (in kJ mol^{-1}) of $C_2H_2(g)$, then

calculate the value of $\left| \frac{\Delta H^\circ}{257} \right|$

 [Watch Video Solution](#)

83. The integral enthalpies of solution of anhydrous $CuSO_4$ (s) and hydrated $CuSO_4 \cdot 5H_2O$ (s) are -70 kJ per mol and 10 kJ per mol respectively. Determine the magnitude of enthalpy of hydration of 0.1 mole anhydrous $CuSO_4$ (s) as



 [Watch Video Solution](#)

84. If enthalpy of neutralisation of HCl by NaOH is -57 kJ mol^{-1} and with NH_4OH is -50 kJ mol^{-1} . Calculate enthalpy of ionisation of NH_4OH (aq).

 [Watch Video Solution](#)

85. Lattice energy of $NaCl$ (s) is -790 kJ mol^{-1} and enthalpy of hydration is -785 kJ mol^{-1} . Calculate enthalpy of solution of $NaCl$ (s).

 [Watch Video Solution](#)

86. x g sample of NH_4NO_3 is decomposed in a Bomb calorimeter. The temperature of calorimeter increase by $4^\circ C$. The heat capacity of the system is $1.25 \text{ kJ}/^\circ C$. Calculate the value of x . Given molar heat of decomposition of NH_4NO_3 at constant volume is 400 kJ mol^{-1} .

 [Watch Video Solution](#)

87. A heat engine operating between $227^\circ C$ and $77^\circ C$ absorbs 10 kcal of heat from the $227^\circ C$ reservoir reversibly per cycle. Calculate total work done (in kcal) in two cycles.

 [Watch Video Solution](#)

88. Calculate work done in chemical reaction (in kcal)

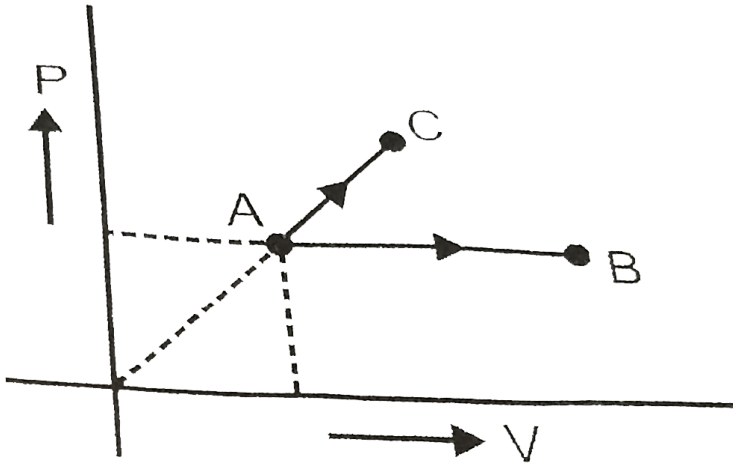
$A(s) + 3B(g) \rightarrow C(l)$ at $227^\circ C$ at 1 atm in closed vessel.

 [Watch Video Solution](#)

89. One mole ideal monoatomic gas is heated according to path AB and AC.

If temperature of state B and state C are equal.

Calculate $\frac{q_{AC}}{q_{AB}} \times 10$.



[▶ Watch Video Solution](#)