



MATHS

BOOKS - CENGAGE MATHS (ENGLISH)

GRAPHS OF ELEMENTARY FUNCTIONS

Illustrations

1. The equation of a tangent to the parabola $y^2 = 8x$ is $xy = x + 2$. The point on this line from which the other tangent to the parabola is perpendicular to the given tangent is (1) $(-1, 1)$ (2) $(0, 2)$ (3) $(2, 4)$ (4) $(-2, 0)$

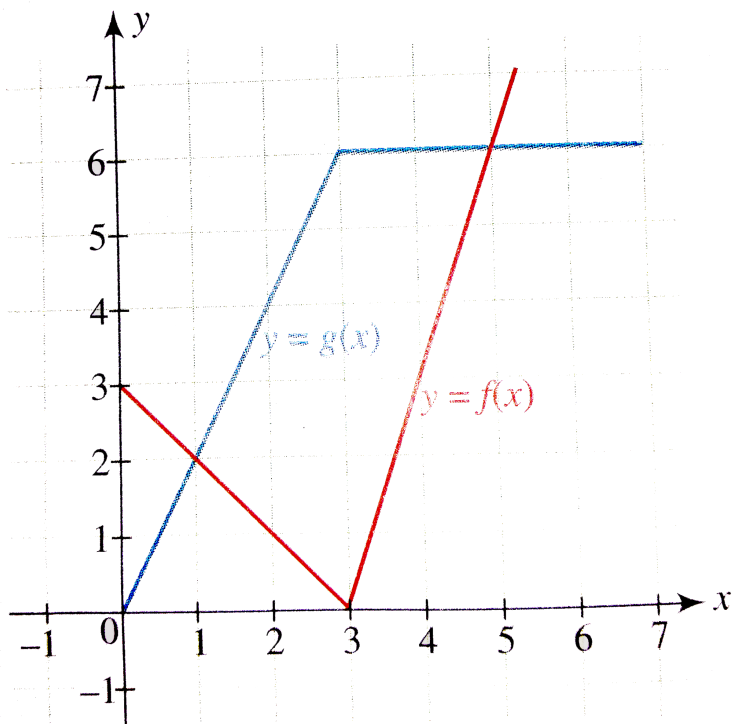


Watch Video Solution

2. Draw the graph of $f(x) = \frac{x^3 - x}{x^2 - 1}$.

 [Watch Video Solution](#)

3. Graph of $y = f(x)$ and $y = g(x)$ is given in the following figure. If $h(x) = f(g(x))$, then find the value of $h'(2)$.



 [Watch Video Solution](#)

4. Let $f(x) = (1 - x)^2 \sin^2 x + x^2$ for all $x \in \mathbb{R}$, and let $g(x) = \int \left(\frac{2(t-1)}{t+1} - \ln t \right) f(t) dt$ for $t \in [1, x]$ for all $x \in (1, \infty)$. Which of the following is true ?



[Watch Video Solution](#)

5. Sketch the regions satisfying the following inequalities:

(a) $x > 2$

(b) $|y| \geq 1$



[Watch Video Solution](#)

6. Shade the regions where points satisfy $|x - y| < 1$.



[Watch Video Solution](#)

7. Plot the region satisfying $|x| + |y| \leq 2$ and $|x| + |y| > 2$.



Watch Video Solution

8. If $x < 2$, then find the values of x^2 graphically.



Watch Video Solution

9. If $x < -1$, then find the values of x^2 graphically.



Watch Video Solution

10. Draw the graph of $f(x) = \begin{cases} x^3, x^2 < 1 \\ x, x^2 \geq 1 \end{cases}$



Watch Video Solution

 Watch Video Solution

11. If $x > 2$, then find the values of $1/x$ graphically.

 Watch Video Solution

12. If $x < -1$, then find the values of $1/x$ graphically.

 Watch Video Solution

13. When $x > -2$, find the values of $1/x$.

 Watch Video Solution

14. When $x < 3$, find the values of $1/x$.



 [Watch Video Solution](#)

15. Draw the graph of $\frac{1}{x} + \frac{1}{y} = 1$.

 [Watch Video Solution](#)

16. Draw the graph of $y = \frac{1}{x^2}$.

 [Watch Video Solution](#)

17. Draw the graphs of following quadratic functions.

(i) $y = x^2 + x + 1$

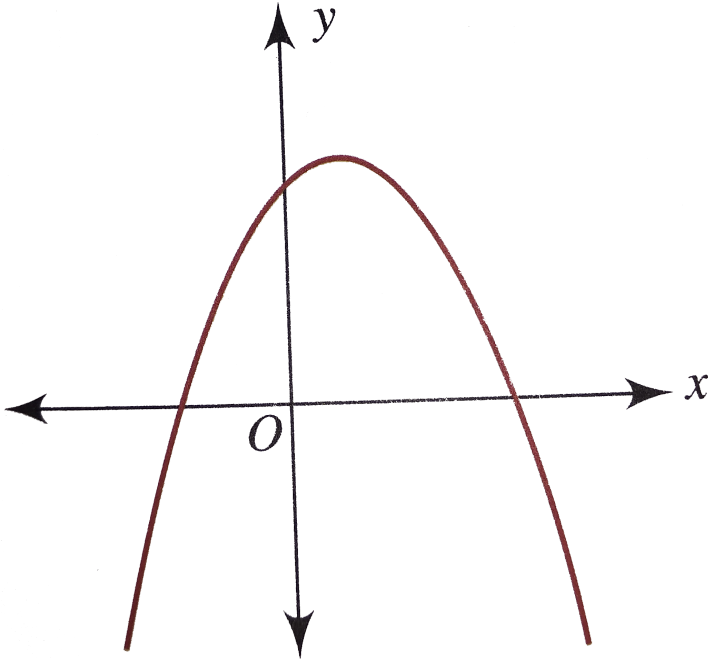
(ii) $y = x^2 - 2x - 3$

(iii) $y = 2 + x - x^2$

(iv) $y = x - 1 - x^2$

 [Watch Video Solution](#)

18. The following figure shows the graph of $f(x) = ax^2 + bx + c$, find the signs of a , b and c .



Watch Video Solution

19. Let $f(x) = 2x(2 - x)$, $0 \leq x \leq 2$. Then find the number of solutions of $f(f(f(x))) = \frac{x}{2}$.



Watch Video Solution

20. $f: R \rightarrow R$ is defined as

$$f(x) = \begin{cases} x^2 + kx + 3, & \text{for } x \geq 0 \\ 2kx + 3, & \text{for } x < 0 \end{cases}.$$

If $f(x)$ is injective,

then find the values of k .



Watch Video Solution

21. If $f(x) = x^3 + 4x^2 + \lambda x + 1$ is a monotonically decreasing function of x in the largest possible interval $\left(-2, -\frac{2}{3}\right)$.

Then (a) $\lambda = 4$ (b) $\lambda = 2$ (c) $\lambda = -1$ (d) λ has no real value



Watch Video Solution

22. For what real values of a do the roots of the equation $x^2 - 2x - (a^2 - 1) = 0$ lie between the roots of the equation $x^2 - 2(a + 1)x + a(a - 1) = 0$.



[Watch Video Solution](#)

23. Find the value of a for which $ax^2 + (a - 3)x + 1 < 0$ for at least one positive real x .



[Watch Video Solution](#)

24. Consider the inequation $9^x - a3^x - a + 3 \leq 0$, where a is real parameter.

The given inequality has at least one negative solution for $a \in$

(a) $(-\infty, 2)$ (b) $(3, \infty)$ (c) $(-2, \infty)$ (d) $(2, 3)$



Watch Video Solution

25. Let a, b, c be real. If $ax^2 + bx + c = 0$ has two real roots α and β , where $\alpha < -1$ and $\beta > 1$, then show that

$$1 + \frac{c}{a} + \left| \frac{b}{a} \right| < 0$$



Watch Video Solution

26. If $b > a$, then the equation $(x - a)(x - b) - 1 = 0$ has

(a) Both roots in (a, b)

(b) Both roots in $(-\infty, a)$

(c) Both roots in $(b, +\infty)$

(d) One root in $(-\infty, a)$

and the other in $(b, +\infty)$



Watch Video Solution

27. When $x > -2$, find the values of $|x|$ graphically.



Watch Video Solution

28. When $x < 3$, find the values of $|x|$ graphically.



Watch Video Solution

29. If $2 \leq |x| \leq 5$, then find the values of x from the graph of $y = |x|$.



Watch Video Solution

30. Draw the graph of $f(x) = \frac{|x - 1|}{x - 1}$.



Watch Video Solution

 Watch Video Solution

31. Draw the graph of $x + |y| = 2y$ and check the differentiability.

 Watch Video Solution

32. Draw the graph of $f(x) = (x + 2)|x - 1|$.

 Watch Video Solution

33. Draw the graph of the function $f(x) = x - |x - x^2|$, $-1 \leq x \leq 1$ and find the points of non-differentiability.

 Watch Video Solution

34. Solve : $x^2 - |x + 2| + x > 0$



Watch Video Solution

35. Draw the graph of $f(x) = |2x - 1| + |2x - 3|$. Find the range of the function.



Watch Video Solution

36. Draw the graph of $f(x) = |x| - |2x - 3|$. Find the range of the function.



Watch Video Solution

37. Let $f(x) = x + 2|x + 1| + 2|x - 1|$. Find the values of k if

$$f(x) = k$$

(i) has exactly one real solution,

(ii) has two negative solutions,

(iii) has two solutions of opposite sign.



Watch Video Solution

38. $f(x) = |ax - b| + c|x| \forall x \in (-\infty, \infty)$, where

$a > 0, b > 0, c > 0$. Find the condition if $f(x)$ attains the

minimum value only at one point.



Watch Video Solution

39. about to only mathematics

- A. On the left of $x = c$
- B. On the right of $x = c$
- C. At no point
- D. At all points

Answer:



[Watch Video Solution](#)

40. If a continuous function f defined on the real line \mathbb{R} assume positive and negative values in \mathbb{R} , then the equation $f(x) = 0$ has a root in \mathbb{R} . For example, if it is known that a continuous function f on \mathbb{R} is positive at some point and its minimum value is negative, then the equation $f(x) = 0$ has a root in \mathbb{R} . Consider $f(x) = ke^x - x$, for all real x where k is a real constant.

The positive value of k for which $ke^x - x = 0$ has only one root is

- A. No point
- B. One point
- C. Two points
- D. More than two points

Answer:



[Watch Video Solution](#)

41. If a continuous function f defined on the real line \mathbb{R} assume positive and negative values in \mathbb{R} , then the equation $f(x) = 0$ has a root in \mathbb{R} . For example, if it is known that a continuous function f on \mathbb{R} is positive at some point and its minimum

value is negative, then the equation $f(x) = 0$ has a root in \mathbb{R} .

Consider $f(x) = ke^x - x$, for all real x where k is a real constant.

For $k > 0$, the set of all values of k for which $y = ke^x - x = 0$ has two distinct roots is

- A. a. $\frac{1}{e}$
- B. b. 1
- C. c. e
- D. d. $\log_e 2$

Answer:



[Watch Video Solution](#)

42. If x and y are arbitrary extensive variables, then

A. $\left(0, \frac{1}{e}\right)$

B. $\left(\frac{1}{e}, 1\right)$

C. $\left(\frac{1}{e}, \infty\right)$

D. $(0, 1)$

Answer:



Watch Video Solution

43. Find the number of solution of $2^x + 3^x + 4^x - 5^x = 0$



Watch Video Solution

44. Draw the graph of $y = \log_x \sqrt{x}$



Watch Video Solution

45. Find the number of roots of the equation $x \log_e x = 1$.



Watch Video Solution

46. If the graphs of the functions $y = \log_e x$ and $y = ax$ intersect at exactly two points, then find the value of a .



Watch Video Solution

47. draw the graph of $f(x) = x + [x]$, $[.]$ denotes greatest integer function.



Watch Video Solution

48. Draw the graph of the function $f(x) = x - |x^2 - x| - 1 \leq x \leq 1$, where $[\cdot]$ denotes the greatest integer function. Find the points of discontinuity and non-differentiability.

 [Watch Video Solution](#)

49. Draw the graph of $f(x) = [x^2]$, $x \in [0, 2)$, where $[\cdot]$ denotes the greatest integer function.

 [Watch Video Solution](#)

50. Draw the graph of $f(x) = [\sqrt{x}]$, $x \in [0, 16)$, where $[\cdot]$ denotes the greatest integer function.

 [Watch Video Solution](#)

51. Draw the graph of $y = [x] + \sqrt{x - [x]}$, where $[\cdot]$ denotes the greatest integer function.



Watch Video Solution

52. Draw the graph of $f(x) = [\log_e x]$, $e^{-2} < x < 10$, where $[\cdot]$ represents the greatest integer function.



Watch Video Solution

53. Solve $x^2 - 4x - [x] = 0$ (where $[\cdot]$ denotes the greatest integer function).



Watch Video Solution

54. Sketch the region of relation $[x] + [y] = 5, x, y \geq 0$, where $[\cdot]$ denotes the greatest integer function.



Watch Video Solution

55. Draw the graph of $f(x) = \{2x\}$, where $\{\cdot\}$ represents the fractional part function.



Watch Video Solution

56. Find the domain of $f(x) = \sqrt{|x| - \{x\}}$ (where $\{\cdot\}$ denotes the fractional part of x).



Watch Video Solution

57. Solve : $x^2 = \{x\}$, where $\{x\}$ represents the fractional part function.



Watch Video Solution

58. Draw the graph of $y^2 = \{x\}$, where $\{ \cdot \}$ represents the fractional part function.



Watch Video Solution

59. Draw the graph of $y = \frac{1}{\{x\}}$, where $\{ \cdot \}$ denotes the fractional part function.

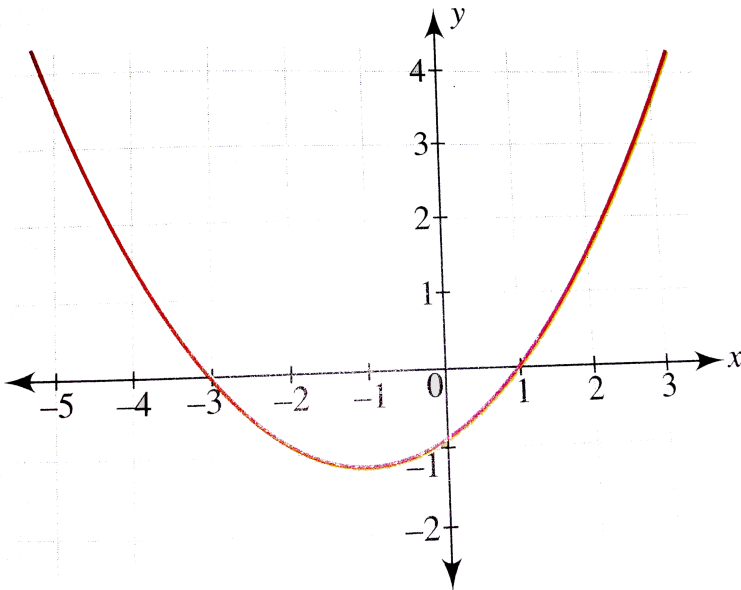


Watch Video Solution

60. Solve : $4\{x\} = x + [x]$ (where $[\cdot]$ denotes the greatest integer function and $\{\cdot\}$ denotes the fractional part function.

 [Watch Video Solution](#)

61. Given the graph of the function $y = f(x)$, draw the graph of $y = \text{sgn}(x)$.



 [Watch Video Solution](#)

62. Draw the graph of $f(x) = \operatorname{sgn}(x^3 - x)$.



Watch Video Solution

63. Draw the graph of $f(x) = \operatorname{sgn}(\log_e x)$.



Watch Video Solution

64. Let a function $f(x)$ be defined in $[-2, 2]$ as

$$f(x) = \begin{cases} \{x\}, & -2 \leq x < -1 \\ |\operatorname{sgn} x|, & -1 \leq x \leq 1 \\ \{-x\}, & 1 < x \leq 2 \end{cases} \quad \text{where } \{x\} \text{ and } \operatorname{sgn} x$$

denote fractional part and signum functions, respectively. Then

find the area bounded by the graph of $f(x)$ and the x-axis.



Watch Video Solution

65. Let $f: \mathbb{R} \rightarrow \mathbb{R}$ be defined as $f(x) = e^{\operatorname{sgn} x} + e^{x^2}$. Then find the range of the function, and also identify the type of the function : one-one or many-one.

 [Watch Video Solution](#)

66. Draw the graph of the function $f(x) = \max\{x, x^2\}$ and write its equivalent definition.

 [Watch Video Solution](#)

67. Let $f: \mathbb{R} \rightarrow \mathbb{R}$ be a function defined by $f(x) = \max\{x, x^3\}$. The set of all points where $f(x)$ is NOT differentiable is

(a) $\{-1, 1\}$

(b) $\{-1, 0\}$

(c) $\{0, 1\}$

(d) $\{-1, 0, 1\}$



Watch Video Solution

68. Find the equivalent definition of

$$f(x) = \max\{x^2, (-x)^2, 2x(1-x)\} \text{ where } 0 \leq x \leq 1$$



Watch Video Solution

69. Let $f: \mathbb{R} \rightarrow \mathbb{R}$ and $g: \mathbb{R} \rightarrow \mathbb{R}$ be respectively given by

$$f(x) = |x| + 1 \text{ and } g(x) = x^2 + 1. \text{ Define } h: \mathbb{R} \rightarrow \mathbb{R} \text{ by}$$

$$h(x) = \begin{cases} \max\{f(x), g(x)\} & \text{if } x \leq 0 \\ \min\{f(x), g(x)\} & \text{if } x > 0 \end{cases}$$

then number of point at which $h(x)$ is not differentiable is



Watch Video Solution

70. Sketch the region of the points satisfying
 $\max \{ |x|, |y| \} \leq 4$.



Watch Video Solution

71. Consider the regions

$$A = \{(x, y) \mid x^2 + y^2 \leq 100\} \text{ and } B = \{x, y \mid \sin(x + y) > 0\}$$

in the plane. Then the area of the region $A \cap B$ is



Watch Video Solution

72. Draw the graphs of the following parabolas :

(i) $x = y^2 - 2y - 3$

(ii) $x = 6 + y - y^2$



Watch Video Solution

73. Find the number of roots of the equation $e^x = \sqrt{-x}$.



Watch Video Solution

74. Let $g(x) = \sqrt{x - 2k}$, $\forall 2k \leq x < 2(k + 1)$, where $k \in$ integer. Check whether $g(x)$ is periodic or not.



Watch Video Solution

75. Plot the region in the first quadrant in which points are nearer to the origin than to the line $x = 3$.



Watch Video Solution

76. Draw the graph of $y = \sqrt{x^2 - 1}$



Watch Video Solution

77. Draw the graph of $y = -\sqrt{6 - 3x^2}$



Watch Video Solution

78. The eccentricity of the ellipse $9x^2 + 25y^2 - 18x - 100y - 116 = 0$ is a. $\frac{25}{16}$ b. $\frac{4}{5}$ c. $\frac{16}{25}$ d. $\frac{5}{4}$



Watch Video Solution

79. Find the area enclosed by the curves $y = \sqrt{x}$ and $x = -\sqrt{y}$ and the circle $x^2 + y^2 = 2$ above the

x-axis.



Watch Video Solution

80. Consider a square with vertices at $(1, 1)$, $(-1, 1)$, $(-1, -1)$, and $(1, -1)$. Set S be the region consisting of all points inside the square which are nearer to the origin than to any edge. Sketch the region S and find its area.



Watch Video Solution

Exercises

1. Draw the graph of $y = \frac{1}{(1/x)}$.



Watch Video Solution

2. (a) Draw the graph of

$$f(x) = \begin{cases} 1, & |x| \geq 1 \\ \frac{1}{n^2}, & \frac{1}{n} < |x| < \frac{1}{n-1}, n = 2, 3, \dots \\ 0, & x = 0 \end{cases}$$

(b) Sketch the region $y \leq -1$.

(c) Sketch the region $|x| < 3$.



Watch Video Solution

3. Sketch the regions which points satisfy $|x + y| \geq 2$.



Watch Video Solution

4. Sketch the region satisfying $|x| < |y|$.



Watch Video Solution

5. For a point P in the plane, let $d_1(P)$ and $d_2(P)$ be the distances of the point P from the lines $x - y = 0$ and $x + y = 0$ respectively. The area of the region R consisting of all points P lying in the first quadrant of the plane and satisfying $2 \leq d_1(P) + d_2(P) \leq 4$, is

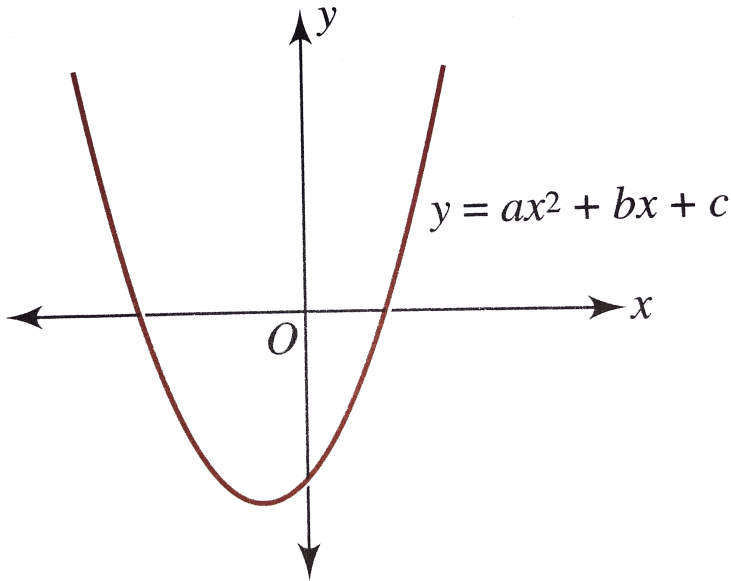
 [Watch Video Solution](#)

6. Draw the graph of $y = \frac{x - 1}{x - 2}$.

 [Watch Video Solution](#)

7. The following figure shows the graph of $f(x) = ax^2 + bx + c$, then find the sign of values of

a , b and c .



Watch Video Solution

8. The entire graph of the equation $y = x^2 + kx - x + 9$ is strictly above the x -axis if and only if (a) $k < 7$ (b) $-5 < k < 7$ (c) $k > -5$ (d) none of these

A. $k < 7$

B. $-5 < k < 7$

C. $k > -5$

D. None of these

Answer:



[Watch Video Solution](#)

9. If $x^2 + 2ax + a < 0 \forall x \in [1, 2]$, the find the values of a .



[Watch Video Solution](#)

10. Draw the graph of $f(x) = x|x|$.



[Watch Video Solution](#)

11. Draw the graph of the function: Solve $\left| \frac{x^2}{x-1} \right| \leq 1$ using the graphical method.



Watch Video Solution

12. Draw the graph of $y = |x^2 - 2x| - x$.



Watch Video Solution

13. Draw the graph of $y = \begin{cases} 2^x, & x^2 - 2x \leq 0 \\ 1 + 3.5x - x^2 & x^2 - 2x > 0 \end{cases}$



Watch Video Solution

14. Draw the graph of $f(x) = |x - 1| + |2x - 3|$. Find the range of the function.



Watch Video Solution

15. Draw the graph of $f(x) = y = |x - 1| + 3|x - 2| - 5|x - 4|$ and find the values of λ for which the equation $f(x) = \lambda$ has roots of opposite sign.



Watch Video Solution

16. Find the set of real value(s) of a for which the equation $|2x + 3| + |2x - 3| = ax + 6$ has more than two solutions.



Watch Video Solution

17. Draw the graph of $y = 2^{\frac{(|x|+x)}{x}}$.



Watch Video Solution

18. Draw the graph of $y = x^{\frac{1}{\log_e x}}$.



Watch Video Solution

19. Find the number of solutions to the equation $x + \log_e x = 0$.



Watch Video Solution

20. Draw the graph of $f(x)=x+[x]$, $[.]$ denotes greatest integer function.



Watch Video Solution

21. Given $f(x)$ is a periodic function with period 2 and it is defined as

$$f(x) = \begin{cases} \left[\cos \frac{\pi x}{2} \right] + 1, & 0 < x < 1 \\ 2 - x, & 1 \leq x < 2 \end{cases}$$

Here $[\cdot]$ represents the greatest integer $\leq x$. If $f(0) = 1$, then draw the graph of the function for $x \in [-2, 2]$.



[Watch Video Solution](#)

22. Draw the region of relation $[x][y] = 6, x, y \geq 0$. Here $[\cdot]$ denotes the greatest integer function.



[Watch Video Solution](#)

23. $\lim_{x \rightarrow c} f(x)$ does not exist for

wher $[\cdot]$ represent greatest integer function $\{ \cdot \}$ represent

fractional part function



Watch Video Solution

24. Let $f(x) = \frac{[x] + 1}{\{x\} + 1}$ for $f: \left[0, \frac{5}{2}\right) \rightarrow \left(\frac{1}{2}, 3\right]$, where $[\cdot]$

represents the greatest integer function and $\{\cdot\}$ represents the fractional part of x .

Draw the graph of $y = f(x)$. Prove that $y = f(x)$ is bijective.

Also find the range of the function.



Watch Video Solution

25. Draw the graph of $y = 2^{\{x\}}$, where $\{\cdot\}$ represents the fractional part function.



Watch Video Solution

26. Find the area of the region containing the points (x, y) satisfying $4 \leq x^2 + y^2 \leq 2(|x| + |y|)$.

 [Watch Video Solution](#)

27. Draw the graph of $y = -\sqrt{x^2 + 2}$

 [Watch Video Solution](#)

28. Draw the graph of $y = |x|^{1/2}$ for $-1 \leq x \leq 1$.

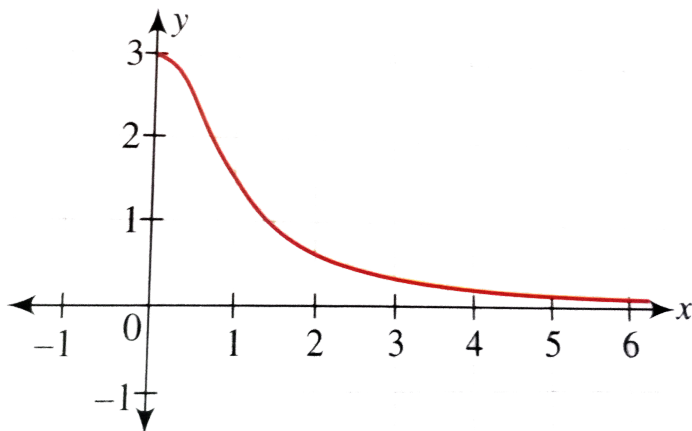
 [Watch Video Solution](#)

29. Draw the graph of $f(x) = \operatorname{sgn}(\log_{0.5} x)$.

 [Watch Video Solution](#)

30. The graph of $y = f(x)$ is as shown in the following figure.

Draw the graph of $y = [f(x)]$.



[▶ Watch Video Solution](#)

31. The function $y = f(x) = \lim_{n \rightarrow \infty} \frac{x^{2n} - 1}{x^{2n} + 1}$. Is this function same as the function $g(x) = \text{sgn}(|x| - 1)$.

[▶ Watch Video Solution](#)

32. An even periodic function $f: \mathbb{R} \rightarrow \mathbb{R}$ with period 4 is such that

$$f(x) = \begin{cases} \max(|x|, x^2), & 0 \leq x < 1 \\ x, & 1 \leq x \leq 2 \end{cases}. \text{ Then draw the}$$

graph of $y = f(x)$ for $x \in \mathbb{R}$



Watch Video Solution

33. The function

$$f(x) = \max\{(1 - x), (1 + x), 2\}, x \in (-\infty, \infty) \text{ is}$$

A. Continuous at all points

B. Differentiable at all points

C. Differentiable at all points except at

$$x = 1 \text{ and } x = -1$$

D. Continuous at all points except at $x = 1$ and $x = -1$,

where it is discontinuous

Answer:



[Watch Video Solution](#)

34. Check the differentiability if $f(x) = \min . \{1, x^2, x^3\}$.



[Watch Video Solution](#)