



MATHS

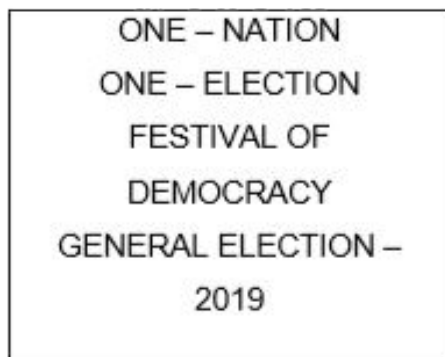
BOOKS - CBSE MODEL PAPER

QUESTION BANK 2021

Multiple Choice Questions

1. A general election of Lok Sabha is a gigantic exercise. About 911 million people were eligible to vote and voter turnout was about 67%, the

highest ever.



Let I be the set of all citizens of India who were eligible to exercise their voting right in general election held in 2019. A relation 'R' is defined on I as follows:

$R = \{(V1, V2) : V1, V2 \in I \text{ and both use their voting right in general election -2019}\}$

Two neighbors X and $Y \in I$ X and Y . X

exercised his voting right while Y did not cast her vote in general election – 2019. Which of the following is true?

A. $(X, Y) \in R$

B. $(Y, X) \in R$

C. $(X, X) \notin R$

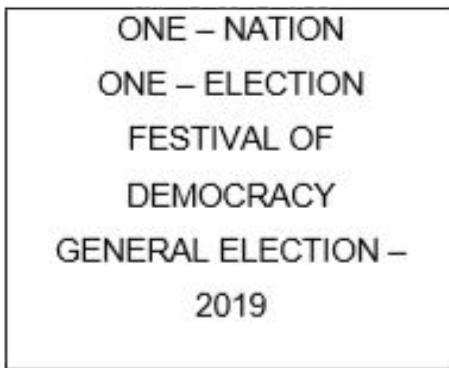
D. $(X, Y) \notin R$

Answer: D



Watch Video Solution

2. A general election of Lok Sabha is a gigantic exercise. About 911 million people were eligible to vote and voter turnout was about 67%, the highest ever.



Let I be the set of all citizens of India who were eligible to exercise their voting right in general election held in 2019. A relation 'R' is defined on I as follows:

$R = \{(V1, V2) : V1, V2 \in I \text{ and both use their voting right in general election -2019}\}$

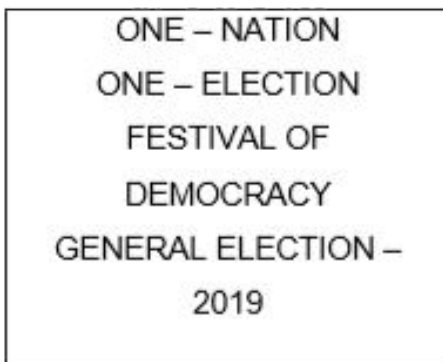
Mr. 'X' and his wife 'W' both exercised their voting right in general election -2019, Which of the following is true?

- A. both (X, W) and $(W, X) \in R$
- B. $(X, W) \in R$ but $(W, X) \notin R$
- C. both (X, W) and $(W, X) \notin R$
- D. $(W, X) \in R$ but $(X, W) \notin R$

Answer: A



3. A general election of Lok Sabha is a gigantic exercise. About 911 million people were eligible to vote and voter turnout was about 67%, the highest ever.



Let I be the set of all citizens of India who were eligible to exercise their voting right in

general election held in 2019. A relation 'R' is defined on I as follows:

$R = \{(V1, V2) : V1, V2 \in I \text{ and both use their voting right in general election -2019}\}$

Three friends F_1, F_2 and F_3 exercised their voting right in general election-2019, then which of the following is true?

A. $(F1, F2) \in R$ $(F2, F3) \in R$ and

$(F1, F3) \in R$

B. $(F1, F2) \in R$ $(F2, F3) \in R$ and

$(F1, F3) \notin R$

C. $(F1, F2) \in R, (F2, F2) \in R$ but

$(F3, F3) \notin R$

D. $(F1, F2), \notin R, (F2, F3) \notin R$ and

$(F1, F3) \notin R$

Answer: A



Watch Video Solution

4. A general election of Lok Sabha is a gigantic exercise. About 911 million people were eligible to vote and voter turnout was about 67%, the

highest ever.



Let I be the set of all citizens of India who were eligible to exercise their voting right in general election held in 2019. A relation 'R' is defined on I as follows:

$R = \{(V1, V2) : V1, V2 \in I \text{ and both use their voting right in general election -2019}\}$

The above defined relation R is _____

A. Symmetric and transitive but not reflexive

B. Universal relation

C. Equivalence relation

D. Reflexive but not symmetric and transitive

Answer: C



Watch Video Solution

5. A general election of Lok Sabha is a gigantic exercise. About 911 million people were eligible to vote and voter turnout was about 67%, the highest ever.



Let I be the set of all citizens of India who were eligible to exercise their voting right in general election held in 2019. A relation 'R' is defined on I as follows:

$R = \{(V1, V2) : V1, V2 \in I \text{ and both use their voting right in general election -2019}\}$

Mr. Shyam exercised his voting right in General Election – 2019, then Mr. Shyam is related to which of the following?

- A. All those eligible voters who cast their votes
- B. Family members of Mr. Shyam
- C. All citizens of India
- D. Eligible voters of India

Answer: A



Watch Video Solution

6. Sherlin and Danju are playing Ludo at home during Covid-19. While rolling the dice, Sherlin's sister Raji observed and noted the possible outcomes of the throw every time belongs to set $\{1,2,3,4,5,6\}$. Let A be the set of players while B be the set of all possible outcomes.



$$A = \{S, D\}, B = \{1, 2, 3, 4, 5, 6\}$$

Let $R: B \rightarrow B$ be defined by $R = \{(x, y) : y$
in divisible by $x\}$ is

A. Reflexive and transitive but not
symmetric

B. Reflexive and symmetric and not
transitive

C. Not reflexive but symmetric and transitive

D. Equivalence

Answer: A



Watch Video Solution

7. Sherlin and Danju are playing Ludo at home during Covid-19. While rolling the dice, Sherlin's sister Raji observed and noted the possible outcomes of the throw every time

belongs to set $\{1,2,3,4,5,6\}$. Let A be the set of players while B be the set of all possible outcomes.



$$A = \{S, D\}, B = \{1,2,3,4,5,6\}$$

Raji wants to know the number of functions from A to B . How many number of functions are possible?

A. 6^0

B. 2^6

C. $6!$

D. 2^{12}

Answer: A



Watch Video Solution

8. Sherlin and Danju are playing Ludo at home during Covid-19. While rolling the dice, Sherlin's sister Raji observed and noted the possible outcomes of the throw every time belongs to set $\{1,2,3,4,5,6\}$. Let A be the set of

players while B be the set of all possible outcomes.



$$A = \{S, D\}, B = \{1,2,3,4,5,6\}$$

Let R be a relation on B defined by $R = \{(1,2), (2,2), (1,3), (3,4), (3,1), (4,3), (5,5)\}$. Then R is

- A. Symmetric
- B. Reflexive
- C. Transitive
- D. None of these three

Answer: D



Watch Video Solution

9. Sherlin and Danju are playing Ludo at home during Covid-19. While rolling the dice, Sherlin's sister Raji observed and noted the possible outcomes of the throw every time belongs to set $\{1,2,3,4,5,6\}$. Let A be the set of players while B be the set of all possible outcomes.



$$A = \{S, D\}, B = \{1,2,3,4,5,6\}$$

Raji wants to know the number of relations possible from A to B. How many numbers of relations are possible?

A. 6^2

B. 2^6

C. 6^{\rightarrow}

D. 2^{12}

Answer: D



Watch Video Solution

10. Sherlin and Danju are playing Ludo at home during Covid-19. While rolling the dice, Sherlin's sister Raji observed and noted the possible outcomes of the throw every time belongs to set $\{1,2,3,4,5,6\}$. Let A be the set of players while B be the set of all possible outcomes.



$A = \{S, D\}, B = \{1,2,3,4,5,6\}$

Let $R: B \rightarrow B$ be defined by $R = \{(1,1), (1,2), (2,2), (3,3), (4,4), (5,5), (6,6)\}$, then R is

- A. Symmetric
- B. Reflexive and Transitive
- C. Transitive and symmetric
- D. Equivalence

Answer: B



Watch Video Solution

11. An organization conducted bike race under 2 different categories-boys and girls. Totally there were 250 participants. Among all of them finally three from Category 1 and two from Category 2 were selected for the final race. Ravi forms two sets B and G with these participants for his college project.

Let $B = \{b_1, b_2, b_3\}$ $G = \{g_1, g_2\}$ where B represents the set of boys selected and G the set of girls who were selected for the final

race.



Ravi decides to explore these sets for various types of relations and functions

Ravi wishes to form all the relations possible from B to G. How many such relations are possible?

A. 2^6

B. 2^5

C. 0

D. 2^3

Answer: A



Watch Video Solution

12. An organization conducted bike race under 2 different categories-boys and girls. Totally there were 250 participants. Among all of them finally three from Category 1 and two from Category 2 were selected for the final

race. Ravi forms two sets B and G with these participants for his college project.

Let $B = \{b_1, b_2, b_3\}$ $G = \{g_1, g_2\}$ where B represents the set of boys selected and G the set of girls who were selected for the final race.



Ravi decides to explore these sets for various types of relations and functions

Let $R: B \rightarrow B$ be defined by $R = \{(x, y) : x?$

and y are students of same sex}, Then this relation R is _____

A. Equivalence

B. Reflexive only

C. Reflexive and symmetric but not transitive

D. Reflexive and transitive but not symmetric

Answer: A



Watch Video Solution

13. An organization conducted bike race under 2 different categories-boys and girls. Totally there were 250 participants. Among all of them finally three from Category 1 and two from Category 2 were selected for the final race. Ravi forms two sets B and G with these participants for his college project.

Let $B = \{b_1, b_2, b_3\}$ $G = \{g_1, g_2\}$ where B represents the set of boys selected and G the set of girls who were selected for the final race.



Ravi decides to explore these sets for various types of relations and functions

Ravi wants to know among those relations, how many functions can be formed from B to G?

A. 2^2

B. 2^{12}

C. 3^2

D. 2^3

Answer: D



Watch Video Solution

14. An organization conducted bike race under 2 different categories-boys and girls. Totally there were 250 participants. Among all of them finally three from Category 1 and two from Category 2 were selected for the final race. Ravi forms two sets B and G with these

participants for his college project.

Let $B = \{b_1, b_2, b_3\}$ $G = \{g_1, g_2\}$ where B represents the set of boys selected and G the set of girls who were selected for the final race.



Ravi decides to explore these sets for various types of relations and functions

Let $R: B \rightarrow G$ be defined by

$R = \{(b_1, g_1), (b_2, g_2), (b_3, g_1)\}$, then R is

A. Injective

B. Surjective

C. Neither Surjective nor Injective

D. Surjective and Injective

Answer: B



Watch Video Solution

15. An organization conducted bike race under 2 different categories-boys and girls. Totally there were 250 participants. Among all of them finally three from Category 1 and two from Category 2 were selected for the final race. Ravi forms two sets B and G with these participants for his college project.

Let $B = \{b_1, b_2, b_3\}$ $G = \{g_1, g_2\}$ where B represents the set of boys selected and G the set of girls who were selected for the final race.



Ravi decides to explore these sets for various types of relations and functions

Ravi wants to find the number of injective functions from B to G. How many numbers of injective functions are possible?

A. 0

B. $2!$

C. $3!$

D. 0!

Answer: A



Watch Video Solution

16. Students of Grade 9, planned to plant saplings along straight lines, parallel to each other to one side of the playground ensuring that they had enough play area. Let us assume that they planted one of the rows of the saplings along the line $y = x - 4$. Let L be

the set of all lines which are parallel on the ground and R be a relation on L .



Answer the following using the above information.

Let relation R be defined by

$$R = \{L_1, L_2\} : L_1 \parallel L_2 \text{ where } L_1, L_2 \in L\}$$

then R is _____ relation

A. Equivalence

B. Only reflexive

C. Not reflexive

D. Symmetric but not transitive

Answer: A



Watch Video Solution

17. Students of Grade 9, planned to plant saplings along straight lines, parallel to each other to one side of the playground ensuring that they had enough play area. Let us assume that they planted one of the rows of the

saplings along the line $y = x - 4$. Let L be the set of all lines which are parallel on the ground and R be a relation on L .



Answer the following using the above information.

Let $R = \{L_1, L_2\} : L_1 \perp L_2$ where

$L_1, L_2 \in L$ which of the following is true?

A. R is Symmetric but neither reflexive nor transitive

B. R is Reflexive and transitive but not symmetric

C. R is Reflexive but neither symmetric nor transitive

D. R is an Equivalence relation

Answer: A



Watch Video Solution

18. Students of Grade 9, planned to plant saplings along straight lines, parallel to each other to one side of the playground ensuring that they had enough play area. Let us assume that they planted one of the rows of the saplings along the line $y = x - 4$. Let L be the set of all lines which are parallel on the ground and R be a relation on L .



Answer the following using the above

information.

The function $f: \mathbb{R} \rightarrow \mathbb{R}$ defined by

$f(x) = x - 4$ is _____

- A. Bijective
- B. Surjective but not injective
- C. Injective but not Surjective
- D. Neither Surjective nor Injective

Answer: A



Watch Video Solution

19. Students of Grade 9, planned to plant saplings along straight lines, parallel to each other to one side of the playground ensuring that they had enough play area. Let us assume that they planted one of the rows of the saplings along the line $y = x - 4$. Let L be the set of all lines which are parallel on the ground and R be a relation on L .



Answer the following using the above information.

Let $f: R \rightarrow R$ be defined by $f(x) = x - 4$.

Then the range of $f(x)$ is _

A. R

B. Z

C. W

D. Q

Answer: A



Watch Video Solution

20. Students of Grade 9, planned to plant saplings along straight lines, parallel to each other to one side of the playground ensuring that they had enough play area. Let us assume that they planted one of the rows of the saplings along the line $y = x - 4$. Let L be the set of all lines which are parallel on the ground and R be a relation on L .



Answer the following using the above

information.

Let $R = \{(L_1, L_2) : L_1 \text{ is parallel to } L_2 \text{ and } L_1 : y = x - 4\}$ then which of the following can be taken as L_2 ?

A. $2x - 2y + 5 = 0$

B. $2x + y = 5$

C. $2x + 2y + 7 = 0$

D. $x + y = 7$

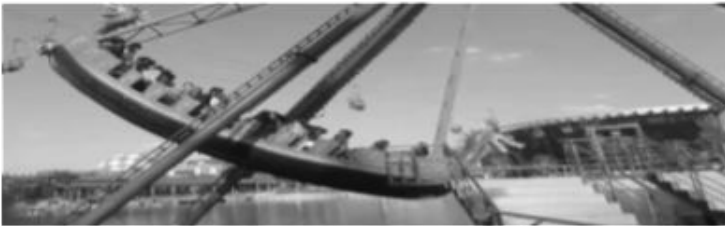
Answer: A



Watch Video Solution

21. Raji visited the Exhibition along with her family. The Exhibition had a huge swing, which attracted many children. Raji found that the swing traced the path of a Parabola as given by $y = x^2$

Answer the following questions using the above information.



Let $f: R \rightarrow R$ be defined by $f(x) = x^2$ is ___

A. Neither Surjective nor Injective

B. Surjective

C. Injective

D. Bijective

Answer: A



Watch Video Solution

22. Raji visited the Exhibition along with her family. The Exhibition had a huge swing, which attracted many children. Raji found that the

swing traced the path of a Parabola as given

by $y = x^2$

Answer the following questions using the above information.



Let $f: \mathbb{N} \rightarrow \mathbb{N}$ be defined by $f(x) = x^2$ is

A. Surjective but not Injective

B. Surjective

C. Injective

D. Bijective

Answer: C



Watch Video Solution

23. Raji visited the Exhibition along with her family. The Exhibition had a huge swing, which attracted many children. Raji found that the swing traced the path of a Parabola as given by $y = x^2$

Answer the following questions using the

above information.



Let $f: \{1, 2, 3, \dots\} \rightarrow \{1, 4, 9, \dots\}$ be defined by $f(x) = x^2$ is _____

- A. Bijective
- B. Surjective but not Injective
- C. Injective but Surjective
- D. Neither Surjective nor Injective

Answer: A

24. Raji visited the Exhibition along with her family. The Exhibition had a huge swing, which attracted many children. Raji found that the swing traced the path of a Parabola as given by $y = x^2$

Answer the following questions using the above information.



Let : $N \rightarrow R$ be defined by $f(x) = x^2$. Range of the function among the following is _____

- A. {1, 4, 9, 16,...}
- B. {1, 4, 8, 9, 10,...}
- C. {1, 4, 9, 15, 16,...}
- D. {1, 4, 8, 16,...}

Answer: A



Watch Video Solution

25. Raji visited the Exhibition along with her family. The Exhibition had a huge swing, which attracted many children. Raji found that the swing traced the path of a Parabola as given by $y = x^2$

Answer the following questions using the above information.



The function $f: \mathbb{Z} \rightarrow \mathbb{Z}$ defined by $f(x) = x^2$ is _____

A. Neither Injective nor Surjective

B. Injective

C. Surjective

D. Bijective

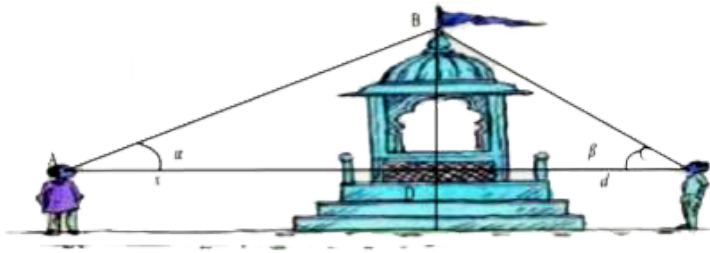
Answer: A



Watch Video Solution

26. Two men on either side of a temple of 30 meters high observe its top at the angles of elevation? α and beta respectively. (as shown

in the figure above). The distance between the two men is $40\sqrt{3}$ meters and the distance between the first person A and the temple is $30\sqrt{3}$ meters. Based on the above information answer the following:



$$\angle CAB = \alpha =$$

A. $\sin^{-1}\left(\frac{2}{\sqrt{3}}\right)$

B. $\sin^{-1}\left(\frac{1}{2}\right)$

C. $\sin^{-1}(2)$

$$D. \sin^{-1} \left(\frac{\sqrt{3}}{2} \right)$$

Answer: B

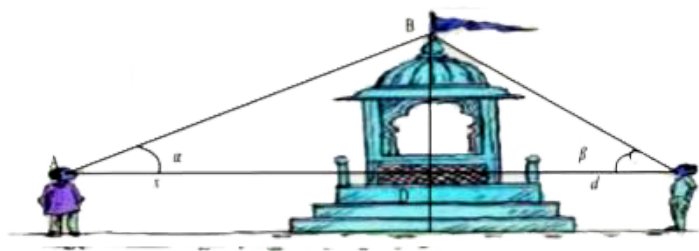


Watch Video Solution

27. Two men on either side of a temple of 30 meters high observe its top at the angles of elevation α and β respectively. (as shown in the figure above). The distance between the two men is $40\sqrt{3}$ meters and the distance between the first person A and the temple is

$30\sqrt{3}$ meters. Based on the above information

answer the following:



$$\angle CAB = \alpha =$$

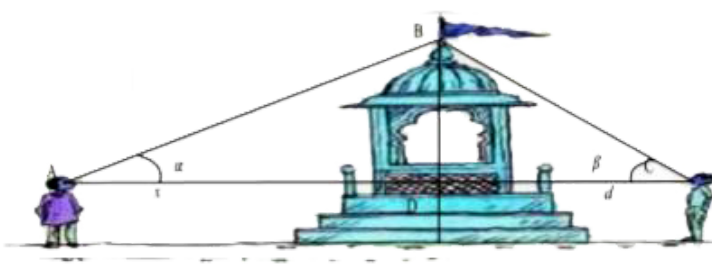
- A. $\cos^{-1}\left(\frac{1}{5}\right)$
- B. $\cos^{-1}\left(\frac{2}{5}\right)$
- C. $\cos^{-1}\left(\frac{\sqrt{3}}{2}\right)$
- D. $\cos^{-1}\left(\frac{4}{5}\right)$

Answer: C



Watch Video Solution

28. Two men on either side of a temple of 30 meters high observe its top at the angles of elevation α and β ? respectively. (as shown in the figure above). The distance between the two men is $40\sqrt{3}$ meters and the distance between the first person A and the temple is $30\sqrt{3}$ meters. Based on the above information answer the following:



$$\angle BCA = \beta =$$

A. $\tan^{-1}\left(\frac{1}{2}\right)$

B. $\tan^{-1}(2)$

C. $\tan^{-1}\left(\frac{1}{\sqrt{3}}\right)$

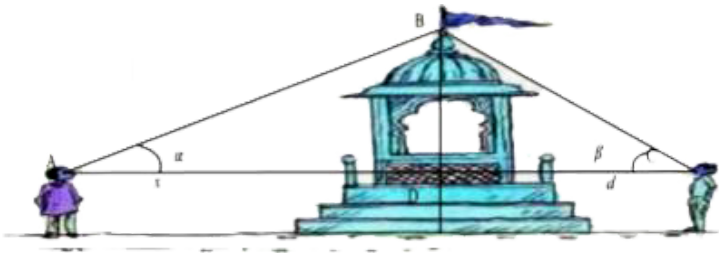
D. $\tan^{-1}(\sqrt{3})$

Answer: D



Watch Video Solution

29. Two men on either side of a temple of 30 meters high observe its top at the angles of elevation α and β respectively. (as shown in the figure above). The distance between the two men is $40\sqrt{3}$ meters and the distance between the first person A and the temple is $30\sqrt{3}$ meters. Based on the above information answer the following:



$$\angle ABC =$$

A. $\frac{\pi}{4}$

B. $\frac{\pi}{6}$

C. $\frac{\pi}{2}$

D. $\frac{\pi}{3}$

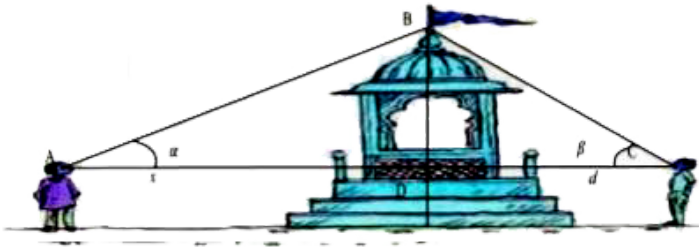
Answer: C



Watch Video Solution

30. Two men on either side of a temple of 30 meters high observe its top at the angles of elevation α and β ? respectively. (as shown in

the figure above). The distance between the two men is $40\sqrt{3}$ meters and the distance between the first person A and the temple is $30\sqrt{3}$ meters. Based on the above information answer the following:



Domain and Range of $\cos^{-1} x =$

A. $(-1, 1), (0, \pi)$

B. $[-1, 1], (0, \pi)$

C. $[-1, 1], [0, \pi]$

$$D. (-1, 1), \left[-\frac{\pi}{2}, \frac{\pi}{2} \right]$$

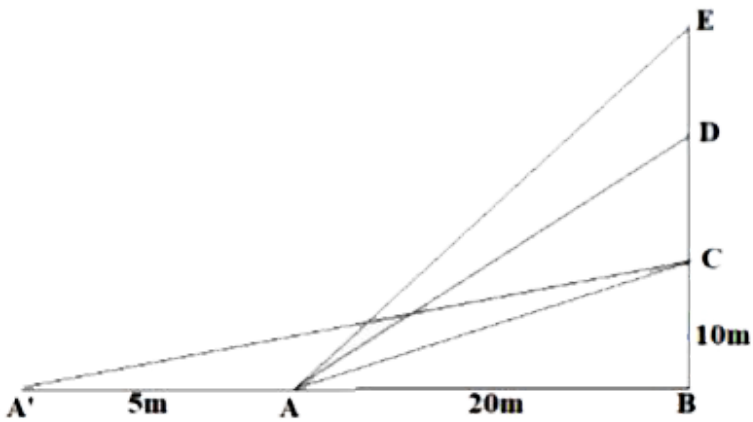
Answer: C



Watch Video Solution

31. The Government of India is planning to fix a hoarding board at the face of a building on the road of a busy market for awareness on COVID-19 protocol. Ram, Robert and Rahim are the three engineers who are working on this project. "A" is considered to be a person

viewing the hoarding board 20 metres away from the building, standing at the edge of a pathway nearby. Ram, Robert and Rahim suggested to the firm to place the hoarding board at three different locations namely C, D and E. "C" is at the height of 10 metres from the ground level. For the viewer A, the angle of elevation of "D" is double the angle of elevation of "C" The angle of elevation of "E" is triple the angle of elevation of "C" for the same viewer. Look at the figure given and based on the above information answer the following:



Measure of $\angle CAB =$

A. $\tan^{-1}(2)$

B. $\tan^{-1}\left(\frac{1}{2}\right)$

C. $\tan^{-1}(1)$

D. $\tan^{-1}(3)$

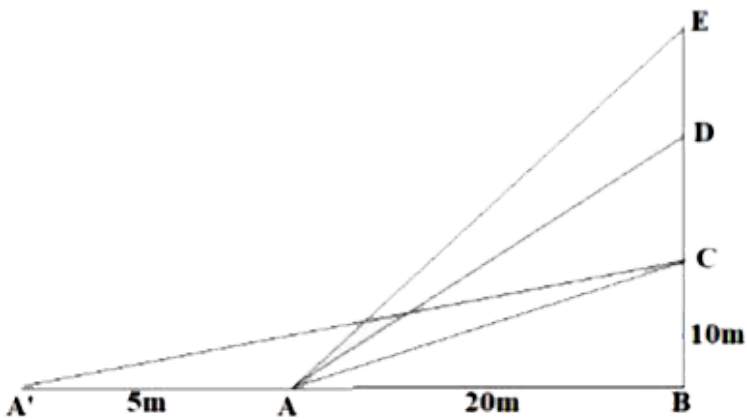
Answer: B



Watch Video Solution

32. The Government of India is planning to fix a hoarding board at the face of a building on the road of a busy market for awareness on COVID-19 protocol. Ram, Robert and Rahim are the three engineers who are working on this project. “A” is considered to be a person viewing the hoarding board 20 metres away from the building, standing at the edge of a pathway nearby. Ram, Robert and Rahim suggested to the firm to place the hoarding

board at three different locations namely C, D and E. "C" is at the height of 10 metres from the ground level. For the viewer A, the angle of elevation of "D" is double the angle of elevation of "C" The angle of elevation of "E" is triple the angle of elevation of "C" for the same viewer. Look at the figure given and based on the above information answer the following:



Measure of $\angle DAB =$

A. $\tan^{-1}\left(\frac{3}{4}\right)$

B. $\tan^{-1}(3)$

C. $\tan^{-1}\left(\frac{4}{3}\right)$

D. $\tan^{-1}(4)$

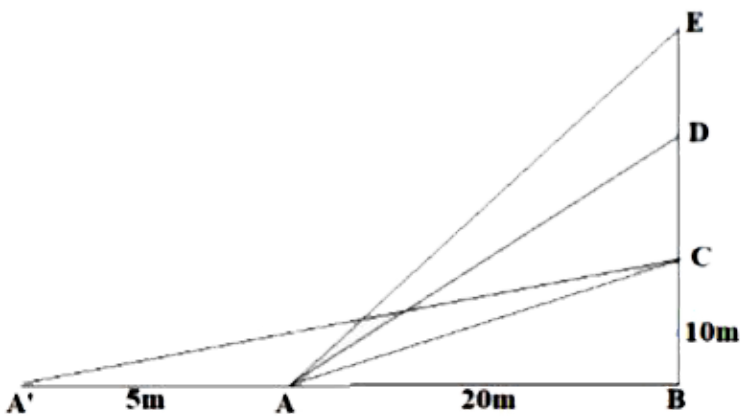
Answer: C



Watch Video Solution

33. The Government of India is planning to fix a hoarding board at the face of a building on the road of a busy market for awareness on COVID-19 protocol. Ram, Robert and Rahim are the three engineers who are working on this project. “A” is considered to be a person viewing the hoarding board 20 metres away from the building, standing at the edge of a pathway nearby. Ram, Robert and Rahim suggested to the firm to place the hoarding

board at three different locations namely C, D and E. "C" is at the height of 10 metres from the ground level. For the viewer A, the angle of elevation of "D" is double the angle of elevation of "C" The angle of elevation of "E" is triple the angle of elevation of "C" for the same viewer. Look at the figure given and based on the above information answer the following:



Measure of $\angle EAB =$

A. $\tan^{-1}(11)$

B. $\tan^{-1} 3$

C. $\tan^{-1} \left(\frac{2}{11} \right)$

D. $\tan^{-1} \left(\frac{11}{2} \right)$

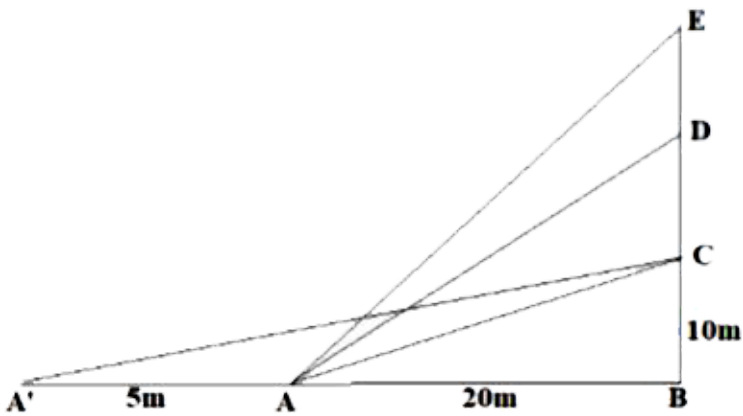
Answer: D



Watch Video Solution

34. The Government of India is planning to fix a hoarding board at the face of a building on the road of a busy market for awareness on COVID-19 protocol. Ram, Robert and Rahim are the three engineers who are working on this project. “A” is considered to be a person viewing the hoarding board 20 metres away from the building, standing at the edge of a pathway nearby. Ram, Robert and Rahim suggested to the firm to place the hoarding

board at three different locations namely C, D and E. "C" is at the height of 10 metres from the ground level. For the viewer A, the angle of elevation of "D" is double the angle of elevation of "C" The angle of elevation of "E" is triple the angle of elevation of "C" for the same viewer. Look at the figure given and based on the above information answer the following:



A^1 Is another viewer standing on the same line of observation across the road. If the width of the road is 5 meters, then the difference between $\angle CAB$ and $\angle CA'B$ Is

A. $\tan^{-1}(1/2)$

B. $\tan^{-1}(1/8)$

C. $\tan^{-1}\left(\frac{2}{5}\right)$

$$D. \tan^{-1} \left(\frac{11}{21} \right)$$

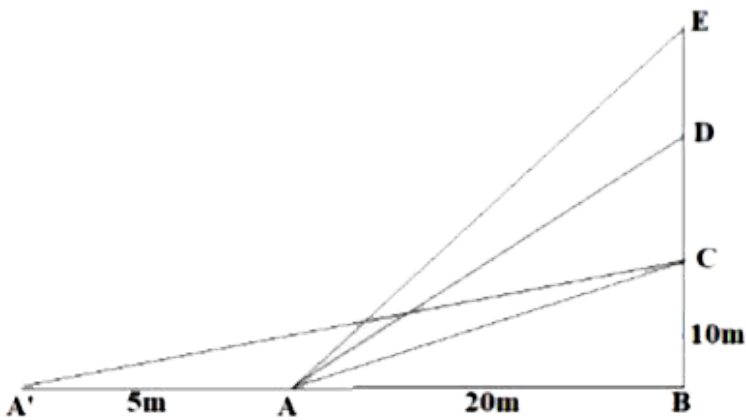
Answer: B



Watch Video Solution

35. The Government of India is planning to fix a hoarding board at the face of a building on the road of a busy market for awareness on COVID-19 protocol. Ram, Robert and Rahim are the three engineers who are working on this project. "A" is considered to be a person

viewing the hoarding board 20 metres away from the building, standing at the edge of a pathway nearby. Ram, Robert and Rahim suggested to the firm to place the hoarding board at three different locations namely C, D and E. "C" is at the height of 10 metres from the ground level. For the viewer A, the angle of elevation of "D" is double the angle of elevation of "C" The angle of elevation of "E" is triple the angle of elevation of "C" for the same viewer. Look at the figure given and based on the above information answer the following:



Domain and Range of $\tan^{-1} x =$

A. $R^+, \left(-\frac{\pi}{2}, \frac{\pi}{2} \right)$

B. $R^-, \left(-\frac{\pi}{2}, \frac{\pi}{2} \right)$

C. $R, \left(-\frac{\pi}{2}, \frac{\pi}{2} \right)$

D. $R, \left(0, \frac{\pi}{2} \right)$

Answer: C



36. A manufacture produces three stationery products Pencil, Eraser and Sharpener which he sells in two markets. Annual sales are indicated below



<u>Market</u>	<u>Products (in numbers)</u>		
	<u>Pencil</u>	<u>Eraser</u>	<u>Sharpener</u>
A	10,000	2000	18,000
B	6000	20,000	8,000

If the unit Sale price of Pencil, Eraser and Sharpener are Rs. 2.50, Rs. 1.50 and Rs. 1.00

respectively, and unit cost of the above three commodities are Rs. 2.00, Rs. 1.00 and Rs. 0.50 respectively, then,

Based on the above information answer the following:

Total revenue of market A

A. Rs. 64,000

B. Rs. 60,400

C. Rs. 46,000

D. Rs. 40600

Answer: D



Watch Video Solution

37. A manufacture produces three stationery products Pencil, Eraser and Sharpener which he sells in two markets. Annual sales are indicated below



Market	Products (in numbers)		
	Pencil	Eraser	Sharpener
A	10,000	2000	18,000
B	6000	20,000	8,000

If the unit Sale price of Pencil, Eraser and Sharpener are Rs. 2.50, Rs. 1.50 and Rs. 1.00

respectively, and unit cost of the above three commodities are Rs. 2.00, Rs. 1.00 and Rs. 0.50 respectively, then,

Based on the above information answer the following:

Total revenue of market B

A. Rs. 35,000

B. Rs. 53,000

C. Rs. 50,300

D. Rs. 30,500

Answer: C



Watch Video Solution

38. A manufacture produces three stationery products Pencil, Eraser and Sharpener which he sells in two markets. Annual sales are indicated below



<u>Market</u>	<u>Products (in numbers)</u>		
	<u>Pencil</u>	<u>Eraser</u>	<u>Sharpener</u>
A	10,000	2000	18,000
B	6000	20,000	8,000

If the unit Sale price of Pencil, Eraser and

Sharpener are Rs. 2.50, Rs. 1.50 and Rs. 1.00 respectively, and unit cost of the above three commodities are Rs. 2.00, Rs. 1.00 and Rs. 0.50 respectively, then,

Based on the above information answer the following:

Cost incurred in market A

A. Rs. 13,000

B. Rs.30,100

C. Rs. 10,300

D. Rs. 31,000

Answer: A::C



Watch Video Solution

39. A manufacture produces three stationery products Pencil, Eraser and Sharpener which he sells in two markets. Annual sales are indicated below



Market	Products (in numbers)		
	Pencil	Eraser	Sharpener
A	10,000	2000	18,000
B	6000	20,000	8,000

If the unit Sale price of Pencil, Eraser and Sharpener are Rs. 2.50, Rs. 1.50 and Rs. 1.00 respectively, and unit cost of the above three commodities are Rs. 2.00, Rs. 1.00 and Rs. 0.50 respectively, then,

Based on the above information answer the following:

Profit in market A and B respectively are

A. (Rs. 15,000, Rs. 17,000)

B. (Rs. 17,000, Rs. 15,000)

C. (Rs. 51,000, Rs. 71,000)

D. (Rs. 10,000, Rs. 20,000)

Answer: A

 [Watch Video Solution](#)

40. A manufacture produces three stationery products Pencil, Eraser and Sharpener which he sells in two markets. Annual sales are indicated below



Market	Products (in numbers)		
	Pencil	Eraser	Sharpener
A	10,000	2000	18,000
B	6000	20,000	8,000

If the unit Sale price of Pencil, Eraser and Sharpener are Rs. 2.50, Rs. 1.50 and Rs. 1.00 respectively, and unit cost of the above three commodities are Rs. 2.00, Rs. 1.00 and Rs. 0.50 respectively, then,

Based on the above information answer the following:

Gross profit in both market

A. Rs.23,000

B. Rs. 20,300

C. Rs. 32,000

D. Rs. 30,200

Answer: B::C



Watch Video Solution

41. Amit, Biraj and Chirag were given the task of creating a square matrix of order 2.

Below are the matrices created by them. A, B, C are the matrices created by Amit, Biraj and Chirag respectively.

$$A = \begin{bmatrix} 1 & 2 \\ -1 & 3 \end{bmatrix} B = \begin{bmatrix} 4 & 0 \\ 1 & 5 \end{bmatrix} C = \begin{bmatrix} 2 & 0 \\ 1 & -2 \end{bmatrix}$$

If $a=4$ and $b=-2$ based on the above information answer the following:

Sum of the matrices A, B and C , $A + (B + C)$

is

A. $\begin{bmatrix} 1 & 6 \\ 2 & 7 \end{bmatrix}$

B. $\begin{bmatrix} 6 & 1 \\ 7 & 2 \end{bmatrix}$

C. $\begin{bmatrix} 7 & 2 \\ 1 & 6 \end{bmatrix}$

D. $\begin{bmatrix} 2 & 1 \\ 7 & 6 \end{bmatrix}$

Answer: C



42. Amit, Biraj and Chirag were given the task of creating a square matrix of order 2.

Below are the matrices created by them. A, B, C are the matrices created by Amit, Biraj and Chirag respectively.

$$A = \begin{bmatrix} 1 & 2 \\ -1 & 3 \end{bmatrix} B = \begin{bmatrix} 4 & 0 \\ 1 & 5 \end{bmatrix} C = \begin{bmatrix} 2 & 0 \\ 1 & -2 \end{bmatrix}$$

If $a=4$ and $b=-2$ based on the above information answer the following:

$(A^T)^T$ is equal to

A. $\begin{bmatrix} 1 & 2 \\ -1 & 3 \end{bmatrix}$

B. $\begin{bmatrix} 2 & 1 \\ 3 & -1 \end{bmatrix}$

C. $\begin{bmatrix} 1 & -1 \\ 2 & 3 \end{bmatrix}$

D. $\begin{bmatrix} 2 & 3 \\ -1 & 1 \end{bmatrix}$

Answer: A



Watch Video Solution

43. Amit, Biraj and Chirag were given the task of creating a square matrix of order 2.

Below are the matrices created by them. A, B ,

C are the matrices created by Amit, Biraj and Chirag respectively.

$$A = \begin{bmatrix} 1 & 2 \\ -1 & 3 \end{bmatrix} B = \begin{bmatrix} 4 & 0 \\ 1 & 5 \end{bmatrix} C = \begin{bmatrix} 2 & 0 \\ 1 & -2 \end{bmatrix}$$

If $a=4$ and $b=-2$ based on the above information answer the following:

$(bA)^T$ is equal to

A. $\begin{bmatrix} -2 & -4 \\ 2 & -6 \end{bmatrix}$

B. $\begin{bmatrix} -2 & 2 \\ -4 & -6 \end{bmatrix}$

C. $\begin{bmatrix} -2 & 2 \\ -6 & -4 \end{bmatrix}$

D. $\begin{bmatrix} -6 & -2 \\ -2 & 4 \end{bmatrix}$

Answer: B



Watch Video Solution

44. Amit, Biraj and Chirag were given the task of creating a square matrix of order 2.

Below are the matrices created by them. A, B, C are the matrices created by Amit, Biraj and Chirag respectively.

$$A = \begin{bmatrix} 1 & 2 \\ -1 & 3 \end{bmatrix} B = \begin{bmatrix} 4 & 0 \\ 1 & 5 \end{bmatrix} C = \begin{bmatrix} 2 & 0 \\ 1 & -2 \end{bmatrix}$$

If $a=4$ and $b=-2$ based on the above

information answer the following:

$AC - BC$ is equal to

A. $\begin{bmatrix} -4 & -6 \\ -4 & 4 \end{bmatrix}$

B. $\begin{bmatrix} -4 & -4 \\ 4 & -6 \end{bmatrix}$

C. $\begin{bmatrix} -4 & -4 \\ -6 & 4 \end{bmatrix}$

D. $\begin{bmatrix} -6 & 4 \\ -4 & -4 \end{bmatrix}$

Answer: C



Watch Video Solution

45. Amit, Biraj and Chirag were given the task of creating a square matrix of order 2.

Below are the matrices created by them. A, B, C are the matrices created by Amit, Biraj and Chirag respectively.

$$A = \begin{bmatrix} 1 & 2 \\ -1 & 3 \end{bmatrix} B = \begin{bmatrix} 4 & 0 \\ 1 & 5 \end{bmatrix} C = \begin{bmatrix} 2 & 0 \\ 1 & -2 \end{bmatrix}$$

If $a=4$ and $b=-2$ based on the above information answer the following:

$(a + b)B$ is equal to

A. $\begin{bmatrix} 0 & 8 \\ 10 & 2 \end{bmatrix}$

B. $\begin{bmatrix} 2 & 10 \\ 8 & 10 \end{bmatrix}$

C. $\begin{bmatrix} 8 & 0 \\ 2 & 10 \end{bmatrix}$

D. $\begin{bmatrix} 2 & 0 \\ 8 & 10 \end{bmatrix}$

Answer: C



Watch Video Solution

46. Three schools DPS, CVC and KVS decided to organize a fair for collecting money for helping the flood victims. They sold handmade fans, mats and plates from recycled material at a cost of Rs. 25, Rs.100 and Rs. 50 each

respectively. The numbers of articles sold are given as



School /Article	DPS	CVC	KVS
Handmade fans	40	25	35
Mats	50	40	50
Plates	20	30	40

Based on the information given above, answer the following questions:

What is the total money (in Rupees) collected by the school DPS?

A. 700

B. 7000

C. 0.33680555555556

D. 7875

Answer: B



Watch Video Solution

47. Three schools DPS, CVC and KVS decided to organize a fair for collecting money for helping the flood victims. They sold handmade fans, mats and plates from recycled material at

a cost of Rs. 25, Rs.100 and Rs. 50 each respectively. The numbers of articles sold are given as



School /Article	DPS	CVC	KVS
Handmade fans	40	25	35
Mats	50	40	50
Plates	20	30	40

Based on the information given above, answer the following questions:What is the total amount of money (in Rs.) collected by schools CVC and KVS?

A. 14000

B. 15725

C. 21000

D. 13125

Answer: A



Watch Video Solution

48. Three schools DPS, CVC and KVS decided to organize a fair for collecting money for helping the flood victims. They sold handmade

fans, mats and plates from recycled material at a cost of Rs. 25, Rs.100 and Rs. 50 each respectively. The numbers of articles sold are given as



School /Article	DPS	CVC	KVS
Handmade fans	40	25	35
Mats	50	40	50
Plates	20	30	40

Based on the information given above, answer the following questions:

What is the total amount of money collected by all three schools DPS, CVC and KVS?

A. Rs. 15,775

B. Rs. 14,000

C. Rs. 21,000

D. Rs. 17,125

Answer: C



Watch Video Solution

49. Three schools DPS, CVC and KVS decided to organize a fair for collecting money for helping the flood victims. They sold handmade fans, mats and plates from recycled material at a cost of Rs. 25, Rs.100 and Rs. 50 each respectively. The numbers of articles sold are given as



School /Article	DPS	CVC	KVS
Handmade fans	40	25	35
Mats	50	40	50
Plates	20	30	40

Based on the information given above, answer the following questions:

If the number of handmade fans and plates are interchanged for all the schools, then what is the total money collected by all schools?

A. Rs. 18,000

B. Rs. 6,750

C. Rs. 5,000

D. Rs. 21,250

Answer: D



50. Three schools DPS, CVC and KVS decided to organize a fair for collecting money for helping the flood victims. They sold handmade fans, mats and plates from recycled material at a cost of Rs. 25, Rs.100 and Rs. 50 each respectively. The numbers of articles sold are given as



School /Article	DPS	CVC	KVS
Handmade fans	40	25	35
Mats	50	40	50
Plates	20	30	40

Based on the information given above, answer the following questions:

How many articles (in total) are sold by three schools?

A. 230

B. 130

C. 430

D. 330

Answer: D



Watch Video Solution

51. On her birth day, Seema decided to donate some money to children of an orphanage home. If there were 8 children less, everyone would have got Rs.10 more. However, if there were 16 children more, everyone would have

got Rs. 10 less. Let the number of children be x and the amount distributed by Seema for one child be y (in Rs.).

Based on the information given above, answer the following questions:



The equations in terms x and y are

$$\text{A. } 5x - 4y = 40$$

$$5x - 8y = -80$$

$$\text{B. } 5x - 4y = 40$$

$$5x - 8y = 80$$

$$\text{C. } 5x - 4y = 40$$

$$5x + 8y = -80$$

$$\text{D. } 5x + 4y = 40$$

$$5x - 7y = -80$$

Answer: A



Watch Video Solution

52. On her birth day, Seema decided to donate some money to children of an orphanage home. If there were 8 children less, everyone would have got Rs.10 more. However, if there were 16 children more, everyone would have got Rs. 10 less. Let the number of children be x and the amount distributed by Seema for one child be y (in Rs.).

Based on the information given above, answer the following questions:



Which of the following matrix equations represent the information given above?

A.
$$\begin{bmatrix} 5 & 4 \\ 5 & 8 \end{bmatrix} \begin{bmatrix} x \\ y \end{bmatrix} = \begin{bmatrix} 40 \\ -80 \end{bmatrix}$$

B.
$$\begin{bmatrix} 5 & -4 \\ 5 & -8 \end{bmatrix} \begin{bmatrix} x \\ y \end{bmatrix} = \begin{bmatrix} 40 \\ 80 \end{bmatrix}$$

C.
$$\begin{bmatrix} 5 & -4 \\ 5 & -8 \end{bmatrix} \begin{bmatrix} x \\ y \end{bmatrix} = \begin{bmatrix} 40 \\ -8 \end{bmatrix}$$

D.
$$\begin{bmatrix} 5 & 4 \\ 5 & -8 \end{bmatrix} \begin{bmatrix} x \\ y \end{bmatrix} = \begin{bmatrix} 40 \\ -80 \end{bmatrix}$$

Answer: C



Watch Video Solution

53. On her birth day, Seema decided to donate some money to children of an orphanage home. If there were 8 children less, everyone would have got Rs.10 more. However, if there were 16 children more, everyone would have got Rs. 10 less. Let the number of children be x and the amount distributed by Seema for one child be y (in Rs.).

Based on the information given above, answer the following questions:



The number of children who were given some money by Seema, is

A. 30

B. 40

C. 23

D. 32

Answer: D



Watch Video Solution

54. On her birth day, Seema decided to donate some money to children of an orphanage home. If there were 8 children less, everyone would have got Rs.10 more. However, if there were 16 children more, everyone would have got Rs. 10 less. Let the number of children be x and the amount distributed by Seema for one child be y (in Rs.).

Based on the information given above, answer the following questions:



How much amount is given to each child by Seema?

A. Rs. 32

B. Rs. 30

C. Rs. 62

D. Rs. 26

Answer: B



Watch Video Solution

55. On her birth day, Seema decided to donate some money to children of an orphanage home. If there were 8 children less, everyone would have got Rs.10 more. However, if there were 16 children more, everyone would have got Rs. 10 less. Let the number of children be x and the amount distributed by Seema for one child be y (in Rs.).

Based on the information given above, answer the following questions:



How much amount Seema spends in distributing the money to all the students of the Orphanage?

A. Rs. 609

B. Rs. 960

C. Rs. 906

D. Rs. 690

Answer: B

56. Two farmers Ramakishan and Gurucharan Singh cultivate only three varieties of rice namely Basmati, Permal and Naura. The sale (in rupees) of these varieties of rice by both the farmers in the month of September and October are given by the following matrices A and B



The total sales in September and October for each farmer in each variety can be represented as _____.

A. $A + B$

B. $A - B$

C. $A > B$

D. $A < B$

Answer: A



Watch Video Solution

57. Two farmers Ramakishan and Gurucharan Singh cultivate only three varieties of rice namely Basmati, Permal and Naura. The sale (in rupees) of these varieties of rice by both the farmers in the month of September and October are given by the following matrices A and B



What is the value of A_{23} ?

A. 10000

B. 20000

C. 30000

D. 40000

Answer: A



Watch Video Solution

58. Two farmers Ramakishan and Gurucharan Singh cultivate only three varieties of rice namely Basmati, Permal and Naura. The sale (in rupees) of these varieties of rice by both

the farmers in the month of September and October are given by the following matrices A and B



The decrease in sales from September to October is given by _____ .

A. $A + B$

B. $A - B$

C. $A > B$

$$D. A < B$$

Answer: B



Watch Video Solution

59. Two farmers Ramakishan and Gurucharan Singh cultivate only three varieties of rice namely Basmati, Permal and Naura. The sale (in rupees) of these varieties of rice by both the farmers in the month of September and October are given by the following matrices A

and B



If Ramkishan receives 2% profit on gross sales, compute his profit for each variety sold in October.

A. Rs. 100, Rs. 200 and Rs. 120

B. Rs. 100, Rs. 200 and Rs. 130

C. Rs. 100, Rs. 220 and Rs. 120

D. Rs. 110, Rs. 200 and Rs. 120

Answer: A



Watch Video Solution

60. Two farmers Ramakishan and Gurucharan Singh cultivate only three varieties of rice namely Basmati, Permal and Naura. The sale (in rupees) of these varieties of rice by both the farmers in the month of September and October are given by the following matrices A and B



If Gurucharan receives 2% profit on gross sales, compute his profit for each variety sold in September.

- A. Rs. 100, Rs. 200, Rs. 120
- B. Rs. 1000 , Rs. 600, Rs. 200
- C. Rs. 400, Rs. 200, Rs. 120
- D. Rs. 1200, Rs. 200, Rs. 120

Answer: B



Watch Video Solution

61. Manjit wants to donate a rectangular plot of land for a school in his village. When he was asked to give dimensions of the plot, he told that if its length is decreased by 50 m and breadth is increased by 50m, then its area will remain same, but if length is decreased by 10m and breadth is decreased by 20m, then its area will decrease by $5300m^2$

Based on the information given above, answer the following questions:



The equations in terms of X and Y are

- A. $x-y=50$, $2x-y=550$
- B. $x-y=50$, $2x+y=550$
- C. $x + y = 50$, $2x + y=550$
- D. $x +y = 50$, $2x + y=550$

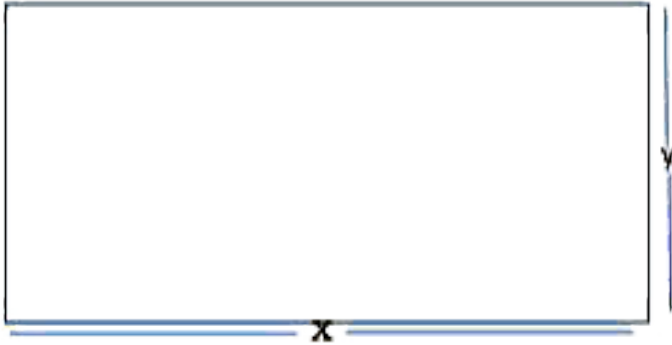
Answer: B



Watch Video Solution

62. Manjit wants to donate a rectangular plot of land for a school in his village. When he was asked to give dimensions of the plot, he told that if its length is decreased by 50 m and breadth is increased by 50m, then its area will remain same, but if length is decreased by 10m and breadth is decreased by 20m, then its area will decrease by $5300m^2$

Based on the information given above, answer the following questions:



Which of the following matrix equation is represented by the given information

A.
$$\begin{bmatrix} 1 & -1 \\ 2 & 1 \end{bmatrix} \begin{bmatrix} x \\ y \end{bmatrix} = \begin{bmatrix} 50 \\ 550 \end{bmatrix}$$

B.
$$\begin{bmatrix} 1 & 1 \\ 2 & 1 \end{bmatrix} \begin{bmatrix} x \\ y \end{bmatrix} = \begin{bmatrix} 50 \\ 550 \end{bmatrix}$$

C.
$$\begin{bmatrix} 1 & 1 \\ 2 & -1 \end{bmatrix} \begin{bmatrix} x \\ y \end{bmatrix} = \begin{bmatrix} 50 \\ 550 \end{bmatrix}$$

D.
$$\begin{bmatrix} 1 & 1 \\ 2 & 1 \end{bmatrix} \begin{bmatrix} x \\ y \end{bmatrix} = \begin{bmatrix} -50 \\ -550 \end{bmatrix}$$

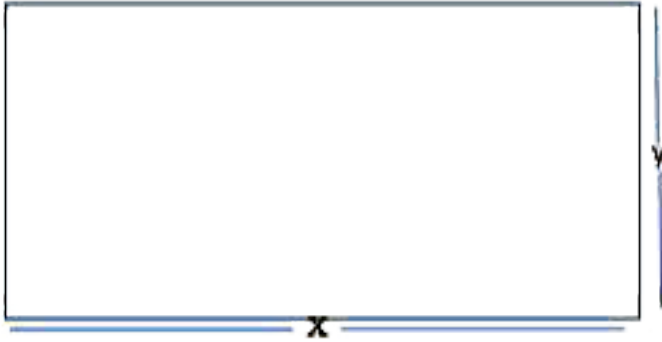
Answer: A



Watch Video Solution

63. Manjit wants to donate a rectangular plot of land for a school in his village. When he was asked to give dimensions of the plot, he told that if its length is decreased by 50 m and breadth is increased by 50m, then its area will remain same, but if length is decreased by 10m and breadth is decreased by 20m, then its area will decrease by $5300m^2$

Based on the information given above, answer the following questions:



The value of x (length of rectangular field) is

- A. 150m
- B. 400m
- C. 200m
- D. 320m

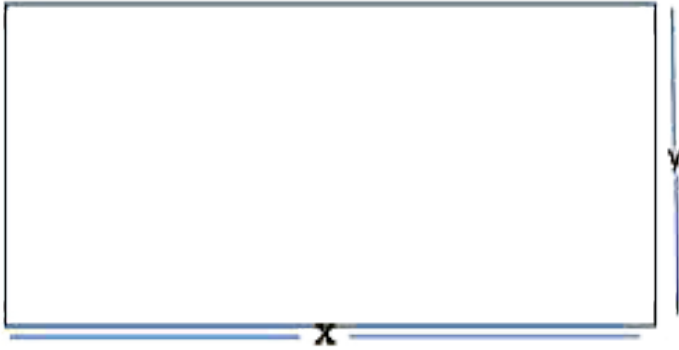
Answer: C



Watch Video Solution

64. Manjit wants to donate a rectangular plot of land for a school in his village. When he was asked to give dimensions of the plot, he told that if its length is decreased by 50 m and breadth is increased by 50m, then its area will remain same, but if length is decreased by 10m and breadth is decreased by 20m, then its area will decrease by $5300m^2$

Based on the information given above, answer the following questions:



The value of y (breadth of rectangular field) is

A. 150m.

B. 200m.

C. 430m.

D. 350m

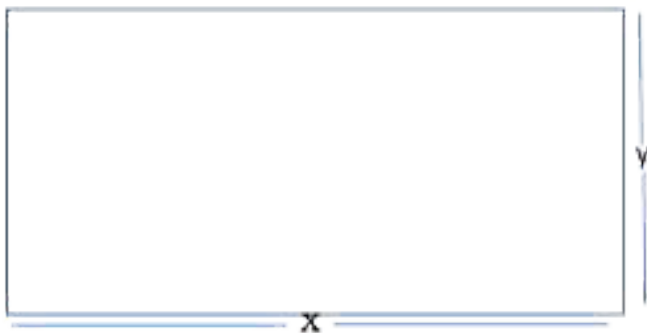
Answer: A



Watch Video Solution

65. Manjit wants to donate a rectangular plot of land for a school in his village. When he was asked to give dimensions of the plot, he told that if its length is decreased by 50 m and breadth is increased by 50m, then its area will remain same, but if length is decreased by 10m and breadth is decreased by 20m, then its area will decrease by $5300m^2$

Based on the information given above, answer the following questions:



How much is the area of rectangular field?

- A. 60000Sq.m.
- B. 30000Sq.m.
- C. 30000m
- D. 3000m

Answer: B



Watch Video Solution

66. The Relation between the height of the plant (y in cm) with respect to exposure to sunlight is governed by the following equation $y = 4x - \frac{1}{2}x^2$ where x is the number of days exposed to sunlight.

The rate of growth of the plant with respect to

sunlight is _____ .



A. $4x - \frac{1}{2}x^2$

B. $4 - x$

C. $x - 4$

D. $x - \frac{1}{2}x^2$

Answer: B



Watch Video Solution

67. The Relation between the height of the plant (y in cm) with respect to exposure to sunlight is governed by the following equation $y = 4x - \frac{1}{2}x^2$ where x is the number of days exposed to sunlight.

What is the number of days it will take for the

plant to grow to the maximum height?



A. 4

B. 6

C. 7

D. 10

Answer: A



Watch Video Solution

68. The Relation between the height of the plant (y in cm) with respect to exposure to sunlight is governed by the following equation $y = 4x - \frac{1}{2}x^2$ where x is the number of days exposed to sunlight.

What is the maximum height of the plant?



A. 12 cm

B. 10 cm

C. 8 cm

D. 6 cm

Answer: C



Watch Video Solution

69. The Relation between the height of the plant (y in cm) with respect to exposure to sunlight is governed by the following equation $y = 4x - \frac{1}{2}x^2$ where x is the number of days exposed to sunlight.

What will be the height of the plant after 2

days?



A. 4cm

B. 6 cm

C. 8cm

D. 10cm

Answer: B



Watch Video Solution

70. The Relation between the height of the plant (y in cm) with respect to exposure to sunlight is governed by the following equation $y = 4x - \frac{1}{2}x^2$ where x is the number of days exposed to sunlight.

If the height of the plant is $\frac{7}{2}$ cm, the number of days it has been exposed to the sunlight is

_____ .



A. 2

B. 3

C. 4

D. 1

Answer: D



Watch Video Solution

71. $P(x) = -5x^2 + 125x + 37500$ is the total profit function of a company, where x is the production of the company.



What will be the production when the profit is maximum?

A. 37500

B. 12.5

C. -12.5

D. -37500

Answer: B



Watch Video Solution

72. $P(x) = -5x^2 + 125x + 37500$ is the total profit function of a company, where x is the production of the company.



What will be the maximum profit?

A. Rs 38,28,125

B. Rs 38281.25

C. Rs 39,000

D. None

Answer: B



Watch Video Solution

73. $P(x) = -5x^2 + 125x + 37500$ is the total profit function of a company, where x is the production of the company.



Check in which interval the profit is strictly increasing .

A. $(12.5, \infty)$

B. for all real numbers

C. for all positive real numbers

D. $(0, 12.5)$

Answer: D



Watch Video Solution

74. $P(x) = -5x^2 + 125x + 37500$ is the total profit function of a company, where x is the production of the company.



When the production is 2units what will be the profit of the company?

A. 37500

B. 37730

C. 37770

D. None

Answer: B



Watch Video Solution

75. $P(x) = -5x^2 + 125x + 37500$ is the total profit function of a company, where x is the production of the company.



What will be production of the company when the profit is Rs 38250?

A. 15

B. 30

C. 2

D. data is not sufficient to find

Answer: A



Watch Video Solution

76. A potter made a mud vessel, where the shape of the pot is based on $f(x) = |x-3| + |x-2|$, where $f(x)$ represents the height of the pot.



When $x > 4$ What will be the height in terms of x ?

A. $x - 2$

B. $x - 3$

C. $2x - 5$

D. $5 - 2x$

Answer: C



Watch Video Solution

77. A potter made a mud vessel, where the shape of the pot is based on $f(x) = |x - 3| + |x - 2|$, where $f(x)$ represents the height of the pot.



Will the slope vary with x value?

A. Yes

B. No

C. None

D. None of these

Answer: A



Watch Video Solution

78. A potter made a mud vessel, where the shape of the pot is based on $f(x) = |x - 3| + |x - 2|$, where $f(x)$ represents the height of the pot.



What is $\frac{dy}{dx}$ at $x=3$

A. 2

B. -2

C. Function is not differentiable

D. 1

Answer: C



Watch Video Solution

79. A potter made a mud vessel, where the shape of the pot is based on $f(x) = |x - 3| + |x - 2|$, where $f(x)$ represents the height of the pot.



When the x value lies between $(2,3)$ then the function is

A. $2x - 5$

B. $5 - 2x$

C. 1

D. 5

Answer: C



Watch Video Solution

80. A potter made a mud vessel, where the shape of the pot is based on $f(x) = |x - 3| + |x - 2|$, where $f(x)$ represents the height of the pot.



If the potter is trying to make a pot using the function $f(x) = [x]$, will he get a pot or not?

Why?

- A. Yes, because it is a continuous function
- B. Yes, because it is not continuous
- C. No, because it is a continuous function

D. No , because it is not continuous

Answer: D



Watch Video Solution

81. The shape of a toy is given as $f(x) = 6(2x^4 - x^2)$. To make the toy beautiful 2 sticks which are perpendicular to each other were placed at a point $(2,3)$, above the toy.



Which value from the following may be abscissa of critical point?

A. $\pm \frac{1}{4}$

B. $\pm \frac{1}{2}$

C. ± 1

D. None

Answer: D



Watch Video Solution

82. The shape of a toy is given as

$f(x) = 6(2x^4 - x^2)$. To make the toy beautiful

2 sticks which are perpendicular to each other

were placed at a point (2,3), above the toy.



Find the slope of the normal based on the position of the stick.

A. 360

B. -360

C. $\frac{1}{360}$

D. $\frac{-1}{360}$

Answer: D



Watch Video Solution

83. The shape of a toy is given as

$f(x) = 6(2x^4 - x^2)$. To make the toy beautiful

2 sticks which are perpendicular to each other

were placed at a point (2,3), above the toy.



What will be the equation of the tangent at
(2,3)?

A. $x + 360y = 1082$

B. $y = 360x - 717$

C. $x = 717y + 360$

D. none

Answer: B



Watch Video Solution

84. The shape of a toy is given as

$f(x) = 6(2x^4 - x^2)$. To make the toy beautiful

2 sticks which are perpendicular to each other

were placed at a point (2,3), above the toy.



Find the second order derivative of the function at $x = 5$.

A. 598

B. 1176

C. 3588

D. 3312

Answer: C



Watch Video Solution

85. The shape of a toy is given as

$f(x) = 6(2x^4 - x^2)$. To make the toy beautiful

2 sticks which are perpendicular to each other

were placed at a point (2,3), above the toy.



At which of the following intervals will $f(x)$ be increasing?

A. $(-\infty, -1/2) \cup (1/2, \infty)$

B. $(-1/2, 0) \cup (1/2, \infty)$

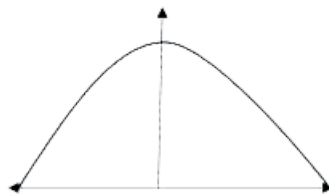
C. $(0, 1/2) \cup (1/2, \infty)$

D. $(-\infty, -1/2) \cup (0, 1/2)$

Answer: B



Watch Video Solution



86.

The bridge connects two hills 100 feet apart.

The arch on the bridge is in a parabolic form.

The highest point on the bridge is 10 feet

above the road at the middle of the bridge as seen in the figure.

Based on the information given above, answer the following questions:

The equation of the parabola designed on the bridge can be

A. $x^2 = 250y$

B. $x^2 = -250y$

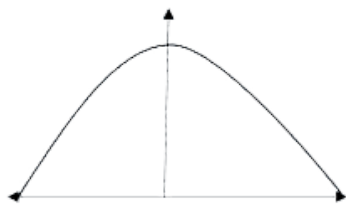
C. $y^2 = 250x$

D. $y^2 = 250y$

Answer: B



Watch Video Solution



87.

The bridge connects two hills 100 feet apart.

The arch on the bridge is in a parabolic form.

The highest point on the bridge is 10 feet above the road at the middle of the bridge as seen in the figure.

Based on the information given above, answer

the following questions:

The value of the integral $\int_{-50}^{50} \frac{x^2}{250} dx$ is

A. $\frac{1000}{3}$

B. $\frac{250}{3}$

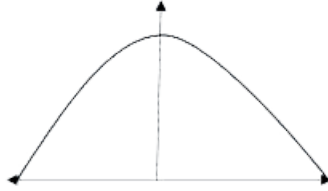
C. 1200

D. 0

Answer: A



Watch Video Solution



88.

The bridge connects two hills 100 feet apart.

The arch on the bridge is in a parabolic form.

The highest point on the bridge is 10 feet

above the road at the middle of the bridge as

seen in the figure.

Based on the information given above, answer

the following questions:

The integrand of the integral $\int_{-50}^{50} x^2 dx$ is

_____ function.

A. Even

B. Odd

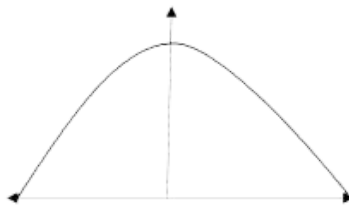
C. Neither odd nor even

D. None

Answer: A



Watch Video Solution



89.

The bridge connects two hills 100 feet apart.

The arch on the bridge is in a parabolic form.

The highest point on the bridge is 10 feet above the road at the middle of the bridge as seen in the figure.

Based on the information given above, answer the following questions:

The area formed by the curve $x^2 = 250y$, x-axis, $y = 0$ and $y = 10$ is

A. $\frac{1000\sqrt{2}}{3}$

B. $\frac{4}{3}$

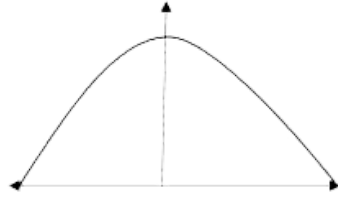
C. $\frac{1000}{3}$

D. 0

Answer: C



Watch Video Solution



90.

The bridge connects two hills 100 feet apart.

The arch on the bridge is in a parabolic form.

The highest point on the bridge is 10 feet above the road at the middle of the bridge as seen in the figure.

Based on the information given above, answer the following questions:

The area formed between $x^2 = 250y$, y -axis, $y = 2$ and $y = 4$ is

A. $\frac{1000}{3}$

B. 0

C. $\frac{1000\sqrt{2}}{3}$

D. none of these

Answer: D



Watch Video Solution

91. A Veterinary doctor was examining a sick cat brought by a pet lover. When it was brought to the hospital, it was already dead.

The pet lover wanted to find its time of death. He took the temperature of the cat at 11.30 pm which was $94.6^{\circ} F$. He took the temperature again after one hour, the temperature was lower than the first observation. It was $93.4^{\circ} F$. The room in which the cat was put is always at $70^{\circ} F$. The normal temperature of the cat is taken as $98.6^{\circ} F$ when it was alive. The doctor estimated the time of death using Newton law of cooling which is governed by the differential equation: $\frac{dT}{dt} \propto (T - 70)$, where $70^{\circ} F$ is the room temperature and T is the temperature of the object at time t .

Substituting the two different observations of T and t made, in the solution of the differential equation $\frac{dT}{dt} = k(T-70)$ where k is a constant of proportion, time of death is calculated.

Which method of solving a differential equation helped in calculation of the time of death?

A. Variable separable method

B. Solving Homogeneous differential equation

C. Solving Linear differential equation

D. all of the above

Answer: A



Watch Video Solution

92. A Veterinary doctor was examining a sick cat brought by a pet lover. When it was brought to the hospital, it was already dead. The pet lover wanted to find its time of death. He took the temperature of the cat at 11.30 pm

which was $94.6^{\circ} F$. He took the temperature again after one hour, the temperature was lower than the first observation. It was $93.4^{\circ} F$. The room in which the cat was put is always at $70^{\circ} F$. The normal temperature of the cat is taken as $98.6^{\circ} F$ when it was alive. The doctor estimated the time of death using Newton law of cooling which is governed by the differential equation: $\frac{dT}{dt} \propto (T - 70)$, where $70^{\circ} F$ is the room temperature and T is the temperature of the object at time t .

Substituting the two different observations of T and t made, in the solution of the

differential equation $\frac{dT}{dt} = k(T-70)$ where k is a constant of proportion, time of death is calculated.

The solution of the differential equation

$$\frac{dT}{dt} = k(T - 70) \text{ is given by,}$$

A. $\log|T - 70| = kt + C$

B. $\log|T - 70| = \log|kt| + C$

C. $T - 70 = kt + C$

D. $T - 70 = kt C$

Answer: A



93. A Veterinary doctor was examining a sick cat brought by a pet lover. When it was brought to the hospital, it was already dead. The pet lover wanted to find its time of death. He took the temperature of the cat at 11.30 pm which was $94.6^{\circ} F$. He took the temperature again after one hour, the temperature was lower than the first observation. It was $93.4^{\circ} F$. The room in which the cat was put is always at $70^{\circ} F$. The normal temperature of the cat is

taken as $98.6^{\circ} F$ when it was alive. The doctor estimated the time of death using Newton law of cooling which is governed by the differential equation: $\frac{dT}{dt} \propto (T - 70)$, where $70^{\circ} F$ is the room temperature and T is the temperature of the object at time t .

Substituting the two different observations of T and t made, in the solution of the differential equation $\frac{dT}{dt} = k(T-70)$ where k is a constant of proportion, time of death is calculated.

If $t = 0$ when T is 72 , then the value of c is

A. -2

B. 0

C. 2

D. $\log 2$

Answer: D



Watch Video Solution

94. Polio drops are delivered to 50K children in a district. The rate at which polio drops are given is directly proportional to the number of

children who have not been administered the drops. By the end of 2nd week half the children have been given the polio drops. How many will have been given the drops by the end of 3rd week can be estimated using the solution to the differential equation $\frac{dy}{dx} = k(50 - y)$ where x denotes the number of weeks and y the number of children who have been given the drops.

Which method of solving a differential equation can be used to solve

$$\frac{dy}{dx} = k(50 - y)?$$

A. Variable separable method

B. Solving Homogeneous differential equation

C. Solving Linear differential equation

D. all of the above

Answer: A



Watch Video Solution

95. Polio drops are delivered to 50K children in a district. The rate at which polio drops are given is directly proportional to the number of children who have not been administered the drops. By the end of 2nd week half the children have been given the polio drops. How many will have been given the drops by the end of 3rd week can be estimated using the solution to the differential equation $\frac{dy}{dx} = k(50 - y)$ where x denotes the number of weeks and y the number of children who have been given the drops.

The solution of the differential equation

$$\frac{dy}{dx} = k(50 - y) \text{ is given by,}$$

A. $\log|50 - y| = kx + C$

B. $-\log|50 - y| = kx + C$

C. $\log|50 - y| = \log|kx| + C$

D. $50 - y = kx + C$

Answer: B



Watch Video Solution

96. Polio drops are delivered to 50K children in a district. The rate at which polio drops are given is directly proportional to the number of children who have not been administered the drops. By the end of 2nd week half the children have been given the polio drops. How many will have been given the drops by the end of 3rd week can be estimated using the solution to the differential equation $\frac{dy}{dx} = k(50 - y)$ where x denotes the number of weeks and y the number of children who have been given the drops.

The value of c in the particular solution given that $y(0)=0$ and $k = 0.049$ is

A. $\log 50$

B. $\log 1/50$

C. 50

D. -50

Answer: B



Watch Video Solution

97. Polio drops are delivered to 50K children in a district. The rate at which polio drops are given is directly proportional to the number of children who have not been administered the drops. By the end of 2nd week half the children have been given the polio drops. How many will have been given the drops by the end of 3rd week can be estimated using the solution to the differential equation $\frac{dy}{dx} = k(50 - y)$ where x denotes the number of weeks and y the number of children who have been given the drops.

Which of the following solutions may be used to find the number of children who have been given the polio drops?

A. $y = 50 - e^{kx}$

B. $y = 50 - e^{-kx}$

C. $y = 50(1 - e^{-kx})$

D. $y = 50(e^{-kx} - 1)$

Answer: C



Watch Video Solution

98. A class XII student appearing for a competitive examination was asked to attempt the following questions

Let \vec{a} , \vec{b} and \vec{c} be three non zero vectors.

If \vec{a} and \vec{b} are such that

$$|\vec{a} + \vec{b}| = |\vec{a} - \vec{b}| \text{ then}$$

A. $\vec{a} \perp \vec{b}$

B. $|\vec{a}| = |\vec{b}|$

C. $\vec{a} = \vec{b}$

D. None of these

Answer: A



Watch Video Solution

99. A class XII student appearing for a competitive examination was asked to attempt the following questions

Let \vec{a} , \vec{b} and \vec{c} be three non zero vectors.

If $\vec{a} = \hat{i} - 2\hat{j}$, $\vec{b} = 2\hat{i} + \hat{j} + 3\hat{k}$ then

evaluate

$$\left(2\vec{a} + \vec{b}\right) \cdot \left[\left(\vec{a} + \vec{b}\right) \times \left(\vec{a} - 2\vec{b}\right)\right]$$

A. 0

B. 4

C. 3

D. 2

Answer: A



Watch Video Solution

100. A class XII student appearing for a competitive examination was asked to attempt the following questions

Let \vec{a} , \vec{b} and \vec{c} be three non zero vectors.

if \vec{a} and \vec{b} are unit vectors and θ be the

angle between them then $|\vec{a} - \vec{b}|$ is

A. $\sin \frac{\theta}{2}$

B. $2\sin \frac{\theta}{2}$

C. $2\cos \frac{\theta}{2}$

D. $\cos \frac{\theta}{2}$

Answer: B



Watch Video Solution

101. A class XII student appearing for a competitive examination was asked to attempt the following questions

Let \vec{a} , \vec{b} and \vec{c} be three non zero vectors.

Let \vec{a} , \vec{b} and \vec{c} be unit vectors such that

$\vec{a} \cdot \vec{b} = \vec{a} \cdot \vec{c} = 0$ and angle between \vec{b}

and \vec{c} is $\frac{\pi}{6}$ then $\vec{a} =$

A. $2\left(\vec{b} \times \vec{c}\right)$

B. $\pm 2\left(\vec{b} \times \vec{c}\right)$

C. $\pm \left(\vec{b} \times \vec{c}\right)$

D. $2\left(\vec{b} \pm \vec{c}\right)$

Answer: C



Watch Video Solution

102. Let \vec{a} , \vec{b} and \vec{c} be three non zero vectors.

The area of the parallelogram formed by \vec{a} and \vec{b} as diagonals is $\vec{a} = \hat{i} - 2\hat{j}$

$$\vec{b} = 2\hat{i} + \hat{j} + 3\hat{k}$$

A. 70

B. 35

C. $\sqrt{70/2}$

D. $\sqrt{70}$

Answer: C



Watch Video Solution

103. A cricket match is organized between two Clubs A and B for which a team from each club is chosen. Remaining players of Club A and Club B are respectively sitting on the plane represented by the equation

$$\vec{r} \cdot (2\vec{i} - \vec{j} + \vec{k}) = 3 \quad \text{and}$$

$$\vec{r} \cdot (\vec{i} + 3\vec{j} + 2\vec{k}) = 8 \text{ to cheer the team of}$$

their own clubs.



Based on the above answer the following:

The Cartesian equation of the plane on which players of Club A are seated is

A. $2x - y + z = 3$

B. $2x - y + 2z = 3$

C. $2x - y + z = -3$

$$D. x - y + z = 3$$

Answer: A



Watch Video Solution

104. A cricket match is organized between two Clubs A and B for which a team from each club is chosen. Remaining players of Club A and Club B are respectively sitting on the plane represented by the equation

$$\vec{r} \cdot \left(2\vec{i} - \vec{j} + \vec{k} \right) = 3 \quad \text{and}$$

$\vec{r} \cdot (\vec{i} + 3\vec{j} + 2\vec{k}) = 8$ to cheer the team of their own clubs.



Based on the above answer the following:

The magnitude of the normal to the plane on which players of club B are seated, is

A. $\sqrt{15}$

B. $\sqrt{14}$

C. $\sqrt{17}$

D. $\sqrt{20}$

Answer: B



Watch Video Solution

105. A cricket match is organized between two Clubs A and B for which a team from each club is chosen. Remaining players of Club A and Club B are respectively sitting on the plane represented by the equation $\vec{r} \cdot (2\vec{i} - \vec{j} + \vec{k}) = 3$ and $\vec{r} \cdot (\vec{i} + 3\vec{j} + 2\vec{k}) = 8$ to cheer the team of their own clubs.



Based on the above answer the following:

The intercept form of the equation of the plane on which players of Club B are seated is

A. $\frac{x}{a} + \frac{y}{\frac{8}{3}} + \frac{z}{2} = 1$

B. $\frac{x}{5} + \frac{y}{\frac{8}{3}} + \frac{z}{3} = 1$

C. $\frac{x}{8} + \frac{y}{\frac{8}{3}} + \frac{z}{4} = 1$

D. $\frac{x}{8} + \frac{y}{7} + \frac{z}{2} = 1$

Answer: C



106. A cricket match is organized between two Clubs A and B for which a team from each club is chosen. Remaining players of Club A and Club B are respectively sitting on the plane represented by the equation

$$\vec{r} \cdot \left(2\vec{i} - \vec{j} + \vec{k} \right) = 3 \quad \text{and}$$

$$\vec{r} \cdot \left(\vec{i} + 3\vec{j} + 2\vec{k} \right) = 8 \text{ to cheer the team of}$$

their own clubs.



Based on the above answer the following:

Which of the following is a player of Club B?

- A. Player sitting at (1, 2, 1)
- B. Player sitting at (0, 1, 2)
- C. Player sitting at (1, 4, 1)
- D. Player sitting at (1, 1, 2)

Answer: D



Watch Video Solution

107. A cricket match is organized between two Clubs A and B for which a team from each club is chosen. Remaining players of Club A and Club B are respectively sitting on the plane represented by the equation $\vec{r} \cdot (2\vec{i} - \vec{j} + \vec{k}) = 3$ and $\vec{r} \cdot (\vec{i} + 3\vec{j} + 2\vec{k}) = 8$ to cheer the team of their own clubs.



Based on the above answer the following:

The distance of the plane, on which players of Club B are seated, from the origin is

A. $\frac{8}{\sqrt{14}}$ units

B. $\frac{6}{\sqrt{14}}$ units

C. $\frac{7}{\sqrt{14}}$ units

D. $\frac{9}{\sqrt{14}}$ units

Answer: A



Watch Video Solution

108. The Indian coast guard, while patrolling, saw a suspicious boat with people. They were nowhere looking like fishermen. The coast guard were closely observing the movement of the boat for an opportunity to seize the boat. They observed that the boat is moving along a planar surface. At an instant of time, the coordinates of the position of the coast guard helicopter and the boat is $(1, 3, 5)$ and $(2, 5, 3)$ respectively.



Based on the above answer the following:

If the line joining the positions of the helicopter and the boat is perpendicular to the plane in which the boat moves, then the equation of the plane is

A. $-x + 2y - 2z = 6$

B. $x + 2y + 2z = 6$

C. $x + 2y - 2z = 6$

$$D. x - 2y - 2z = 6$$

Answer: C



Watch Video Solution

109. The Indian coast guard, while patrolling, saw a suspicious boat with people. They were nowhere looking like fishermen. The coast guard were closely observing the movement of the boat for an opportunity to seize the boat. They observed that the boat is moving along a

planar surface. At an instant of time, the coordinates of the position of the coast guard helicopter and the boat is $(1, 3, 5)$ and $(2, 5, 3)$ respectively.



Based on the above answer the following:

If the coast guard decide to shoot the boat at that given instant of time, then what is the distance (in meters) that the bullet has to travel?

A. 5m

B. 3m

C. 6m

D. 4m

Answer: B



Watch Video Solution

110. The Indian coast guard, while patrolling, saw a suspicious boat with people. They were nowhere looking like fishermen. The coast

guard were closely observing the movement of the boat for an opportunity to seize the boat. They observed that the boat is moving along a planar surface. At an instant of time, the coordinates of the position of the coast guard helicopter and the boat is $(1, 3, 5)$ and $(2, 5, 3)$ respectively.



Based on the above answer the following:

If the coast guard decides to shoot the boat at

that given instant of time, when the speed of bullet is 36m/sec, then what is the time taken for the bullet to travel and hit the boat?

- A. $\frac{1}{8}$ seconds
- B. $\frac{1}{14}$ seconds
- C. $\frac{1}{10}$ seconds
- D. $\frac{1}{12}$ seconds

Answer: D



Watch Video Solution

111. The Indian coast guard, while patrolling, saw a suspicious boat with people. They were nowhere looking like fishermen. The coast guard were closely observing the movement of the boat for an opportunity to seize the boat. They observed that the boat is moving along a planar surface. At an instant of time, the coordinates of the position of the coast guard helicopter and the boat is $(1, 3, 5)$ and $(2, 5, 3)$ respectively.



Based on the above answer the following:

At that given instant of time, the equation of line passing through the positions of the helicopter and boat is

A. $\frac{x - 1}{1} = \frac{y - 3}{2} = \frac{z - 5}{-2}$

B. $\frac{x - 1}{2} = \frac{y - 3}{1} = \frac{z - 5}{-2}$

C. $\frac{x - 1}{-2} = \frac{y - 3}{-1} = \frac{z - 5}{-2}$

D. $\frac{x - 1}{2} = \frac{y - 3}{-1} = \frac{z - 5}{2}$

Answer: A



Watch Video Solution

112. The Indian coast guard, while patrolling, saw a suspicious boat with people. They were nowhere looking like fishermen. The coast guard were closely observing the movement of the boat for an opportunity to seize the boat. They observed that the boat is moving along a planar surface. At an instant of time, the coordinates of the position of the coast guard

helicopter and the boat is $(1, 3, 5)$ and $(2, 5, 3)$ respectively.



Based on the above answer the following:

At a different instant of time, the boat moves to a different position along the planar surface. What should be the coordinates of the location of the boat if the coast guard shoots the bullet along the line whose equation is $\frac{x}{1} = \frac{y - 1}{2} = \frac{z - 2}{1}$ for the bullet to hit the boat?

A. $\left(\frac{-8}{3}, \frac{19}{3}, \frac{-14}{3}\right)$

B. $\left(\frac{8}{3}, \frac{-19}{3}, \frac{-14}{3}\right)$

C. $\left(\frac{8}{3}, \frac{-19}{3}, \frac{-14}{3}\right)$

D. none of the above

Answer: D



Watch Video Solution

113. The equation of motion of a missile are $x = 3t$, $y = -4t$, $z = t$, where the time 't' is given in seconds, and the distance is measured in

kilometres.



Based on the above answer the following:

What is the path of the missile?

A. Straight line

B. Parabola

C. Circle

D. Ellipse

Answer: A



Watch Video Solution

114. The equation of motion of a missile are $x = 3t$, $y = -4t$, $z = t$, where the time 't' is given in seconds, and the distance is measured in kilometres.



Based on the above answer the following:

Which of the following points lie on the path of the missile?

A. $(6, 8, 2)$

B. $(6, -8, -2)$

C. $(6, -8, 2)$

D. $(-6, -8, 2)$

Answer: C



Watch Video Solution

115. The equation of motion of a missile are $x = 3t$, $y = -4t$, $z = t$, where the time 't' is given in seconds, and the distance is measured in kilometres.



Based on the above answer the following:

At what distance will the rocket be from the starting point $(0, 0, 0)$ in 5 seconds?

A. $\sqrt{550}$ kms

B. $\sqrt{650}$ kms

C. $\sqrt{450}$ kms

D. $\sqrt{750}$ kms

Answer: B



Watch Video Solution

116. The equation of motion of a missile are $x = 3t$, $y = -4t$, $z = t$, where the time 't' is given in seconds, and the distance is measured in kilometres.



Based on the above answer the following:

If the position of rocket at a certain instant of time is $(5, -8, 10)$, then what will be the height of the rocket from the ground? (The ground is considered as the xy – plane).

A. 12 km

B. 11 km

C. 20 km

D. 10 km

Answer: D



Watch Video Solution

117. The equation of motion of a missile are $x = 3t$, $y = -4t$, $z = t$, where the time 't' is given in seconds, and the distance is measured in kilometres.



Based on the above answer the following:

At a certain instant of time, if the missile is above the sea level, where the equation of the surface of sea is given by $2x + y + 3z = 1$ and the position of the missile at that instant of time is $(1, 1, 2)$, then the image of the position of the rocket in the sea is

A. $\left(\frac{-9}{7}, \frac{-1}{7}, \frac{-10}{7} \right)$

B. $\left(\frac{9}{7}, \frac{-1}{7}, \frac{-10}{7}\right)$

C. $\left(\frac{-9}{7}, \frac{1}{7}, \frac{-10}{7}\right)$

D. $\left(\frac{-9}{7}, \frac{-1}{7}, \frac{10}{7}\right)$

Answer: A



Watch Video Solution

118. Suppose the floor of a hotel is made up of mirror polished Salvatore stone. There is a large crystal chandelier attached to the ceiling of the hotel room. Consider the floor of the

hotel room as a plane having the equation $x - y + z = 4$ and the crystal chandelier is suspended at the point $(1, 0, 1)$.



Based on the above answer the following:

Find the direction ratios of the perpendicular from the point $(1, 0, 1)$ to the plane $x - y + z = 4$.

A. $(-1, -1, 1)$

B. $(1, -1, -1)$

C. $(-1, -1, -1)$

D. $(1, -1, 1)$

Answer: D



Watch Video Solution

119. Suppose the floor of a hotel is made up of mirror polished Salvatore stone. There is a large crystal chandelier attached to the ceiling of the hotel room. Consider the floor of the hotel room as a plane having the equation $x -$

$y + z = 4$ and the crystal chandelier is suspended at the point $(1, 0, 1)$.



Based on the above answer the following:

Find the length of the perpendicular from the point $(1, 0, 1)$ to the plane $x - y + z = 4$.

- A. $\frac{2}{\sqrt{3}}$ units
- B. $\frac{4}{\sqrt{3}}$ units
- C. $\frac{6}{\sqrt{3}}$ units

D. $\frac{9}{\sqrt{3}}$ units

Answer: A



Watch Video Solution

120. Suppose the floor of a hotel is made up of mirror polished Salvatore stone. There is a large crystal chandelier attached to the ceiling of the hotel room. Consider the floor of the hotel room as a plane having the equation $x - y + z = 4$ and the crystal chandelier is

suspended at the point $(1, 0, 1)$.



Based on the above answer the following:

The equation of the perpendicular from the point $(1, 0, 1)$ to the plane $x - y + z = 4$ is

A. $\frac{x - 1}{2} = \frac{y - 3}{-1} = \frac{z + 5}{2}$

B. $\frac{x - 1}{-2} = \frac{y + 2}{-1} = \frac{z - 5}{2}$

C. $\frac{x - 1}{1} = \frac{y}{-1} = \frac{z - 1}{1}$

D. $\frac{x - 1}{2} = \frac{y}{-2} = \frac{z - 1}{1}$

Answer: C



Watch Video Solution

121. Suppose the floor of a hotel is made up of mirror polished Salvatore stone. There is a large crystal chandelier attached to the ceiling of the hotel room. Consider the floor of the hotel room as a plane having the equation $x - y + z = 4$ and the crystal chandelier is suspended at the point $(1, 0, 1)$.



Based on the above answer the following:

The equation of the plane parallel to the plane $x - y + z = 4$, which is at a unit distance from the point $(1, 0, 1)$ is

A. $x - y + z = (2 - \sqrt{3})$

B. $x - y + z + (2 + \sqrt{3}) = 0$

C. $x - y + z = (2 + \sqrt{3})$

D. Both (a) and (c)

Answer: D



Watch Video Solution

122. Suppose the floor of a hotel is made up of mirror polished Salvatore stone. There is a large crystal chandelier attached to the ceiling of the hotel room. Consider the floor of the hotel room as a plane having the equation $x - y + z = 4$ and the crystal chandelier is suspended at the point $(1, 0, 1)$.



Based on the above answer the following:

The direction cosine of the normal to the plane $x - y + z = 4$ is

A. $\left(\frac{1}{\sqrt{3}}, \frac{-1}{\sqrt{3}}, \frac{-1}{\sqrt{3}} \right)$

B. $\left(\frac{1}{\sqrt{3}}, \frac{-1}{\sqrt{3}}, \frac{1}{\sqrt{3}} \right)$

C. $\left(\frac{-1}{\sqrt{3}}, \frac{-1}{\sqrt{3}}, \frac{1}{\sqrt{3}} \right)$

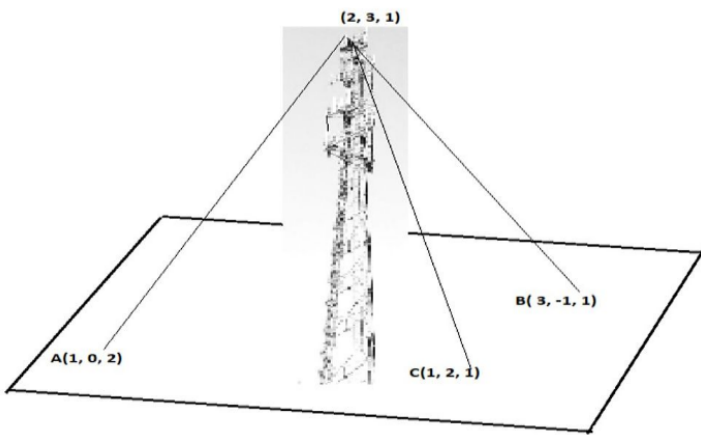
D. $\left(\frac{-1}{\sqrt{3}}, \frac{-1}{\sqrt{3}}, \frac{-1}{\sqrt{3}} \right)$

Answer: B



Watch Video Solution

123. A mobile tower stands at the top of a hill. Consider the surface on which the tower stands as a plane having points $A(1, 0, 2)$, $B(3, -1, 1)$ and $C(1, 2, 1)$ on it. The mobile tower is tied with 3 cables from the point A , B and C such that it stands vertically on the ground. The top of the tower is at the point $(2, 3, 1)$ as shown in the figure.



Based on the above answer the following:

The equation of the plane passing through the points A , B and C is

A. $3x - 2y + 4z = -11$

B. $3x + 2y + 4z = 11$

C. $3x - 2y - 4z = 11$

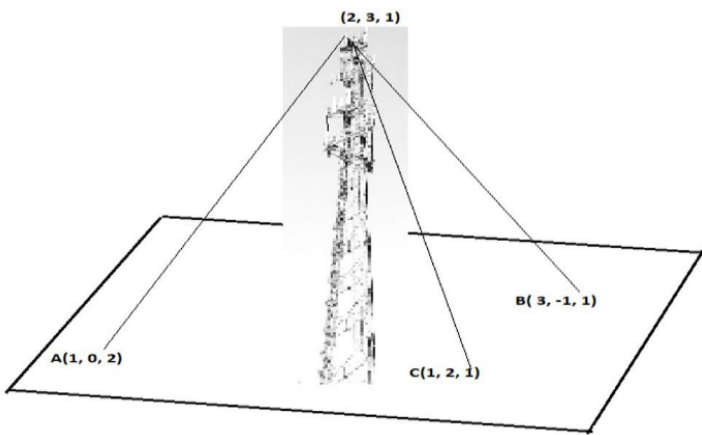
D. $-3x + 2y + 4z = -11$

Answer: B



Watch Video Solution

124. A mobile tower stands at the top of a hill. Consider the surface on which the tower stands as a plane having points $A(1, 0, 2)$, $B(3, -1, 1)$ and $C(1, 2, 1)$ on it. The mobile tower is tied with 3 cables from the point A , B and C such that it stands vertically on the ground. The top of the tower is at the point $(2, 3, 1)$ as shown in the figure.



Based on the above answer the following:

The height of the tower from the ground is

A. $\frac{5}{\sqrt{29}}$ units

B. $\frac{7}{\sqrt{29}}$ units

C. $\frac{6}{\sqrt{29}}$ units

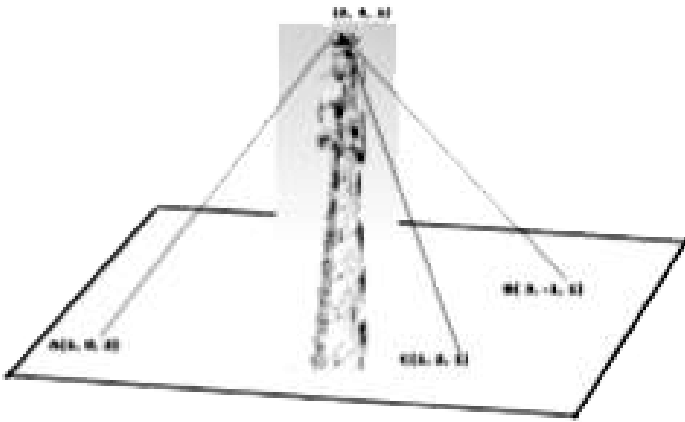
D. $\frac{8}{\sqrt{29}}$ units

Answer: A



Watch Video Solution

125. A mobile tower stands at the top of a hill. Consider the surface on which the tower stands as a plane having points $A(1, 0, 2)$, $B(3, -1, 1)$ and $C(1, 2, 1)$ on it. The mobile tower is tied with 3 cables from the point A , B and C such that it stands vertically on the ground. The top of the tower is at the point $(2, 3, 1)$ as shown in the figure.



Based on the above answer the following:

The equation of the perpendicular line drawn from the top of the tower to the ground is

A. $\frac{x - 1}{2} = \frac{y + 3}{1} = \frac{z - 8}{-2}$

B. $\frac{x - 2}{-2} = \frac{y - 2}{2} = \frac{z - 1}{-4}$

C. $\frac{x - 2}{3} = \frac{y - 3}{2} = \frac{z - 1}{4}$

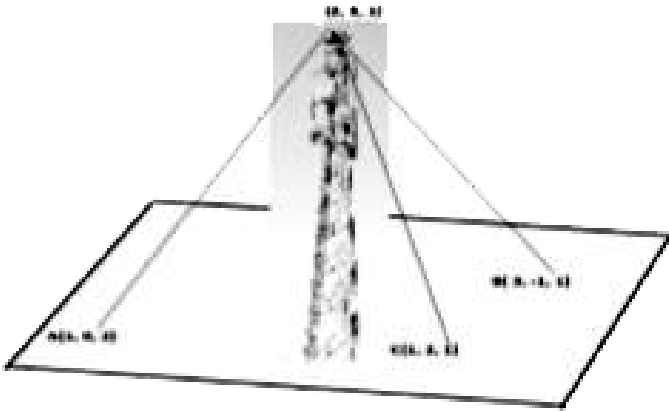
D. $\frac{x + 1}{-2} = \frac{y + 3}{-1} = \frac{z - 5}{2}$

Answer: C



Watch Video Solution

126. A mobile tower stands at the top of a hill. Consider the surface on which the tower stands as a plane having points $A(1, 0, 2)$, $B(3, -1, 1)$ and $C(1, 2, 1)$ on it. The mobile tower is tied with 3 cables from the point A , B and C such that it stands vertically on the ground. The top of the tower is at the point $(2, 3, 1)$ as shown in the figure.



Based on the above answer the following:

The coordinates of the foot of the perpendicular drawn from the top of the tower to the ground are

A. $\left(\frac{43}{29}, \frac{-77}{29}, \frac{-9}{29} \right)$

B. $\left(\frac{9}{7}, \frac{-1}{7}, \frac{-10}{7} \right)$

C. $\left(-\frac{43}{29}, \frac{77}{29}, \frac{-9}{29} \right)$

D. $\left(\frac{43}{29}, \frac{77}{29}, \frac{9}{29}\right)$

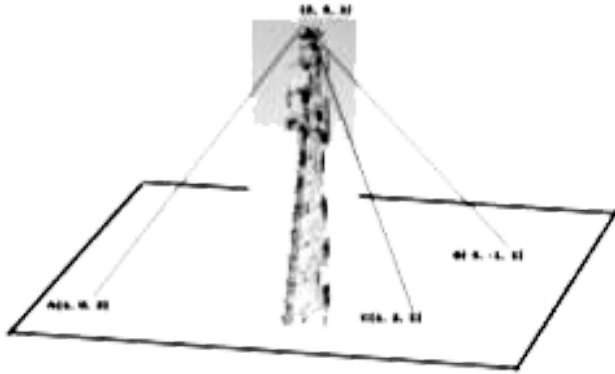
Answer: D



Watch Video Solution

127. A mobile tower stands at the top of a hill. Consider the surface on which the tower stands as a plane having points $A(1, 0, 2)$, $B(3, -1, 1)$ and $C(1, 2, 1)$ on it. The mobile tower is tied with 3 cables from the point A , B and C such that it stands vertically on the ground.

The top of the tower is at the point (2, 3, 1) as shown in the figure.



Based on the above answer the following:

The area of ΔABC is

- A. $\frac{\sqrt{29}}{4}$ sq. units
- B. $\frac{\sqrt{29}}{2}$ sq. units
- C. $\frac{\sqrt{39}}{2}$ sq. units

D. $\frac{\sqrt{39}}{4}$ sq. units

Answer: B

 [Watch Video Solution](#)

128. A coach is training 3 players. He observes that the player A can hit a target 4 times in 5 shots, player B can hit 3 times in 4 shots and the player C can hit 2 times in 3 shots



From this situation answer the following:

Let the target is hit by A, B: the target is hit by B and, C: the target is hit by A and C. Then, the probability that A, B and, C all will hit, is

A. $\frac{4}{5}$

B. $\frac{3}{5}$

C. $\frac{2}{5}$

D. $\frac{1}{5}$

Answer: C



Watch Video Solution

129. A coach is training 3 players. He observes that the player A can hit a target 4 times in 5 shots, player B can hit 3 times in 4 shots and the player C can hit 2 times in 3 shots



From this situation answer the following:

what is the probability that B, C will hit and A will lose?

A. $1/10$

B. $3/10$

C. $7/10$

D. $4/10$

Answer: A



Watch Video Solution

130. A coach is training 3 players. He observes that the player A can hit a target 4 times in 5 shots, player B can hit 3 times in 4 shots and the player C can hit 2 times in 3 shots



From this situation answer the following:

what is the probability that 'any two of A, B and C will hit?

A. $1/30$

B. $11/30$

C. $17/30$

D. $13/30$

Answer: D



Watch Video Solution

131. A coach is training 3 players. He observes that the player A can hit a target 4 times in 5 shots, player B can hit 3 times in 4 shots and the player C can hit 2 times in 3 shots



From this situation answer the following:

What is the probability that ‘none of them will hit the target’?

A. $1/30$

B. $1/60$

C. $1/15$

D. $2/15$

Answer: B



Watch Video Solution

132. A coach is training 3 players. He observes that the player A can hit a target 4 times in 5 shots, player B can hit 3 times in 4 shots and

the player C can hit 2 times in 3 shots



From this situation answer the following:

What is the probability that at least one of A, B or C will hit the target?

A. $59/60$

B. $2/5$

C. $3/5$

D. $1/60$

Answer: A



Watch Video Solution

133. The reliability of a COVID PCR test is specified as follows

Of people having COVID, 90% of the test detects the disease but 10% goes undetected.

Of people free of COVID, 99% of the test is judged COVID negative but 1% are diagnosed as showing COVID positive. From a large population of which only 0.1% have COVID, one

person is selected at random, given the COVID PCR test, and the pathologist reports him/her as COVID positive.



Based on the above information, answer the following

What is the probability of the 'person to be tested as COVID positive' given that 'he is actually having COVID?'

A. 0.001

B. 0.1

C. 0.8

D. 0.9

Answer: D



Watch Video Solution

134. The reliability of a COVID PCR test is specified as follows

Of people having COVID, 90% of the test

detects the disease but 10% goes undetected. Of people free of COVID, 99% of the test is judged COVID negative but 1% are diagnosed as showing COVID positive. From a large population of which only 0.1% have COVID, one person is selected at random, given the COVID PCR test, and the pathologist reports him/her as COVID positive.



Based on the above information, answer the following

What is the probability of the 'person to be tested as COVID positive' given that 'he is actually not having COVID'?

A. 0.01

B. 0.99

C. 0.1

D. 0.001

Answer: A



135. The reliability of a COVID PCR test is specified as follows

Of people having COVID, 90% of the test detects the disease but 10% goes undetected.

Of people free of COVID, 99% of the test is judged COVID negative but 1% are diagnosed as showing COVID positive. From a large population of which only 0.1% have COVID, one person is selected at random, given the COVID PCR test, and the pathologist reports him/her

as COVID positive.



Based on the above information, answer the following

What is the probability that the 'person is actually not having COVID?

A. 0.998

B. 0.999

C. 0.001

D. 0.111

Answer: B



Watch Video Solution

136. The reliability of a COVID PCR test is specified as follows

Of people having COVID, 90% of the test detects the disease but 10% goes undetected.

Of people free of COVID, 99% of the test is

judged COVID negative but 1% are diagnosed as showing COVID positive. From a large population of which only 0.1% have COVID, one person is selected at random, given the COVID PCR test, and the pathologist reports him/her as COVID positive.



Based on the above information, answer the following

What is the probability that the 'person is actually having COVID given that 'he is tested as COVID positive'?

A. 0.83

B. 0.0803

C. 0.083

D. 0.089

Answer: C



Watch Video Solution

137. The reliability of a COVID PCR test is specified as follows

Of people having COVID, 90% of the test detects the disease but 10% goes undetected.

Of people free of COVID, 99% of the test is judged COVID negative but 1% are diagnosed

as showing COVID positive. From a large population of which only 0.1% have COVID, one

person is selected at random, given the COVID PCR test, and the pathologist reports him/her

as COVID positive.



Based on the above information, answer the following

What is the probability that the ‘person selected will be diagnosed as COVID positive’?

A. 0.1089

B. 0.01089

C. 0.0189

D. 0.189

Answer: B



Watch Video Solution

138. In answering a question on a multiple choice test for class XII, a student either knows the answer or guesses. Let $\frac{3}{5}$ be the probability that he knows the answer and $\frac{2}{5}$ be the probability that he guesses. Assume that a student who guesses at the answer will

be correct with probability $1/3$. Let E_1 , E_2 , E be the events that the student knows the answer, guesses the answer and answers correctly respectively.



Based on the above information, answer the following

What is the value of $P(E_1)$?

A. $2/5$

B. $1/3$

C. 1

D. $\frac{3}{5}$

Answer: D



Watch Video Solution

139. In answering a question on a multiple choice test for class XII, a student either knows the answer or guesses. Let $\frac{3}{5}$ be the probability that he knows the answer and $\frac{2}{5}$ be the probability that he guesses. Assume

that a student who guesses at the answer will be correct with probability $1/3$. Let E_1 , E_2 , E be the events that the student knows the answer, guesses the answer and answers correctly respectively.



Based on the above information, answer the following

Value of $P(E \mid E_1)$ is

A. $1/3$

B. 1

C. $\frac{2}{3}$

D. $\frac{4}{5}$

Answer: B



Watch Video Solution

140. In answering a question on a multiple choice test for class XII, a student either knows the answer or guesses. Let $\frac{3}{5}$ be the probability that he knows the answer and $\frac{2}{5}$

be the probability that he guesses. Assume that a student who guesses at the answer will be correct with probability $1/3$. Let E_1 , E_2 , E be the events that the student knows the answer, guesses the answer and answers correctly respectively.



Based on the above information, answer the following

$$\sum_{k=1}^{k=2} P(E | E_k)P(E_k) \text{ Equals}$$

A. $11/15$

B. $4/15$

C. $1/5$

D. 1

Answer: A



Watch Video Solution

141. In answering a question on a multiple choice test for class XII, a student either knows the answer or guesses. Let $3/5$ be the

probability that he knows the answer and $2/5$ be the probability that he guesses. Assume that a student who guesses at the answer will be correct with probability $1/3$. Let E_1 , E_2 , E be the events that the student knows the answer, guesses the answer and answers correctly respectively.



Based on the above information, answer the

following

Value of $\sum_{k=1}^{k=2} p(E_k)$

A. $1/3$

B. $1/5$

C. 1

D. $3/5$

Answer: C



Watch Video Solution

142. In answering a question on a multiple choice test for class XII, a student either knows the answer or guesses. Let $\frac{3}{5}$ be the probability that he knows the answer and $\frac{2}{5}$ be the probability that he guesses. Assume that a student who guesses at the answer will be correct with probability $\frac{1}{3}$. Let E_1 , E_2 , E be the events that the student knows the answer, guesses the answer and answers correctly respectively.



Based on the above information, answer the following

What is the probability that the student knows the answer given that he answered it correctly?

A. $2/11$

B. $5/3$

C. $9/11$

D. 13 / 3

Answer: C



Watch Video Solution

Questions

1. A Veterinary doctor was examining a sick cat brought by a pet lover. When it was brought to the hospital, it was already dead. The pet lover wanted to find its time of death. He took

the temperature of the cat at 11.30 pm which was $94.6^{\circ} F$. He took the temperature again after one hour, the temperature was lower than the first observation. It was $93.4^{\circ} F$. The room in which the cat was put is always at $70^{\circ} F$. The normal temperature of the cat is taken as $98.6^{\circ} F$ when it was alive. The doctor estimated the time of death using Newton law of cooling which is governed by the differential equation: $\frac{dT}{dt} \propto (T - 70)$, where $70^{\circ} F$ is the room temperature and T is the temperature of the object at time t .

Substituting the two different observations of

T and t made, in the solution of the differential equation $\frac{dT}{dt} = k(T-70)$ where k is a constant of proportion, time of death is calculated.

State the degree of the above given differential equation.



[Watch Video Solution](#)

2. A Veterinary doctor was examining a sick cat brought by a pet lover. When it was brought to the hospital, it was already dead. The pet

lover wanted to find its time of death. He took the temperature of the cat at 11.30 pm which was $94.6^{\circ} F$. He took the temperature again after one hour, the temperature was lower than the first observation. It was $93.4^{\circ} F$. The room in which the cat was put is always at $70^{\circ} F$. The normal temperature of the cat is taken as $98.6^{\circ} F$ when it was alive. The doctor estimated the time of death using Newton law of cooling which is governed by the differential equation: $\frac{dT}{dt} \propto (T - 70)$, where $70^{\circ} F$ is the room temperature and T is the temperature of the object at time t .

Substituting the two different observations of T and t made, in the solution of the differential equation $\frac{dT}{dt} = k(T-70)$ where k is a constant of proportion, time of death is calculated.

If the temperature was measured 2 hours after 11.30pm, will the time of death change?
(Yes/No)



Watch Video Solution

3. Polio drops are delivered to 50K children in a district. The rate at which polio drops are given is directly proportional to the number of children who have not been administered the drops. By the end of 2nd week half the children have been given the polio drops. How many will have been given the drops by the end of 3rd week can be estimated using the solution to the differential equation $\frac{dy}{dx} = k(50 - y)$ where x denotes the number of weeks and y the number of children who have been given the drops.

State the order of the above given differential equation.



[Watch Video Solution](#)

4. Solar Panels have to be installed carefully so that the tilt of the roof, and the direction to the sun, produce the largest possible electrical power in the solar panels.

A surveyor uses his instrument to determine the coordinates of the four corners of a roof where solar panels are to be mounted. In the

picture , suppose the points are labelled counter clockwise from the roof corner nearest to the camera in units of meters $P_1(6, 8, 4)$, $P_2(21, 8, 4)$, $P_3(21, 16, 10)$ and $P_4(6, 16, 10)$



What are the components to the two edge vectors defined by $\vec{A} = PV$ of $P_2 - P_1$ and

$\vec{B} = PV$ of $P_4 - P_1$? (where PV stands for position vector)



[Watch Video Solution](#)

5. Solar Panels have to be installed carefully so that the tilt of the roof, and the direction to the sun, produce the largest possible electrical power in the solar panels.

A surveyor uses his instrument to determine the coordinates of the four corners of a roof where solar panels are to be mounted. In the

picture , suppose the points are labelled counter clockwise from the roof corner nearest to the camera in units of meters $P_1(6, 8, 4)$, $P_2(21, 8, 4)$, $P_3(21, 16, 10)$ and $P_4(6, 16, 10)$



Write the vector in standard notation with \hat{i} , \hat{j} and \hat{k} (where \hat{i} , \hat{j} and \hat{k} are the unit vectors along the three axes).



Watch Video Solution

6. Solar Panels have to be installed carefully so that the tilt of the roof, and the direction to the sun, produce the largest possible electrical power in the solar panels.

A surveyor uses his instrument to determine the coordinates of the four corners of a roof where solar panels are to be mounted. In the picture , suppose the points are labelled counter clockwise from the roof corner nearest to the camera in units of meters

$P_1(6, 8, 4)$, $P_2(21, 8, 4)$, $P_3(21, 16, 10)$ and

$P_4(6, 16, 10)$



What are the magnitudes of the vectors \vec{A}
and \vec{B} and in what units?



Watch Video Solution

7. Solar Panels have to be installed carefully so that the tilt of the roof, and the direction to the sun, produce the largest possible electrical power in the solar panels.

A surveyor uses his instrument to determine the coordinates of the four corners of a roof where solar panels are to be mounted. In the picture , suppose the points are labelled counter clockwise from the roof corner nearest to the camera in units of meters $P_1(6, 8, 4)$, $P_2(21, 8, 4)$, $P_3(21, 16, 10)$ and $P_4(6, 16, 10)$



What are the components to the vector \vec{N} perpendicular to \vec{A} and \vec{B} the surface of the roof?



Watch Video Solution

8. Solar Panels have to be installed carefully so that the tilt of the roof, and the direction to the sun, produce the largest possible electrical power in the solar panels.

A surveyor uses his instrument to determine the coordinates of the four corners of a roof where solar panels are to be mounted. In the picture , suppose the points are labelled counter clockwise from the roof corner nearest to the camera in units of meters $P_1(6, 8, 4)$, $P_2(21, 8, 4)$, $P_3(21, 16, 10)$ and $P_4(6, 16, 10)$



What is the magnitude of \vec{N} and its units?

The sun is located along the unit vector

$\vec{S} = \frac{1}{2}\hat{i} - \frac{6}{7}\hat{j} + \frac{1}{7}\hat{k}$. If the flow of solar

energy is given by the vector $\vec{F} = 910S$ in

units of watts/meter², what is the dot product

of vectors \vec{F} with \vec{N} , and the units for this

quantity?



Watch Video Solution

9. Solar Panels have to be installed carefully so that the tilt of the roof, and the direction to the sun, produce the largest possible electrical power in the solar panels.

A surveyor uses his instrument to determine the coordinates of the four corners of a roof where solar panels are to be mounted. In the picture , suppose the points are labelled counter clockwise from the roof corner nearest to the camera in units of meters $P_1(6, 8, 4)$, $P_2(21, 8, 4)$, $P_3(21, 16, 10)$ and

$P_4(6, 16, 10)$



What is the angle between vectors \vec{N} and \vec{S}
? What is the elevation angle of the sun above
the plane of the roof? ($\cos 51^\circ = 0.629$)



Watch Video Solution