



BIOLOGY

BOOKS - TRUEMAN BOOK COMPANY BIOLOGY (HINGLISH)

Plant Kingdom

Multiple Choice Question

1. A full mature plant body, undifferentiated into root, stem and leaf is called.

A. thallus

B. coenocytic

C. hyphae

D. callus

Answer: A



Watch Video Solution

2. Algae are included in

A. Thallophytes

B. spermatophytes

C. Embryophytes

D. Tracheophytes

Answer: A



Watch Video Solution

3. Algae are characterised by

- A. thalloid plant body
- B. ph/ycobilins
- C. unicellular sex organs
- D. mechanical tissue.

Answer: A



Watch Video Solution

4. Algae resemble fungi in the presence of similar

- A. reproductive structure
- B. cell wall
- C. similar reserve food
- D. similar mode of nutrition

Answer: A



Watch Video Solution

5. Green algae are ancestors of angiosperms/land plants because

- A. both have vascular bundles

B. both have starch as reserve food

C. both have jacketed sex organs

D. all of the above

Answer: B



Watch Video Solution

6. Classification of Algae into 11 classes was made by Fritsch on the basis of flagellation, pigmentation and type of reserve food. Out of this, the main criteria used in algal classification grouping of algae is

A. chemical composition of cell wall

B. type of pigmentation

C. nature of food storage

D. shape and colony formation.

Answer: B



Watch Video Solution

7. Study of Algae is called

A. phycology

B. phytology

C. mycology

D. phenology

Answer: A



Watch Video Solution

8. Choose the correct statement.

A. Algae show embryo stage

B. Algae show only haplontic life cycle

C. Algae are plants as they possess cell wall, chl a and starch food.

D. all of the above

Answer: C



Watch Video Solution

9. All algae possess

A. chl a and b

B. chl a, carotenes and phycobilins

C. chl b and carotenes

D. chl a and carotenoids

Answer: D



Watch Video Solution

10. Largest acellular, green, marine alga, popularly called umbrella plant is

A. Ulva

B. Acetabularia

C. Spirogyra

D. Volvox

Answer: B



Watch Video Solution

11. Kelps are

A. fresh water algae

B. marine green algae

C. large marine parenchymatous brown algae

D. large marine parenchymatous and algae.

Answer: C



Watch Video Solution

12. Red eye spot (stigma) is meant for

A. movement

B. vision

C. photoreception

D. photosynthesis

Answer: C



Watch Video Solution

13. Red snow is caused by

A. stigma

B. chloroplast

C. hypnospor

D. aplanospore

Answer: C



Watch Video Solution

14. The diploid stage is represented by one celled zygote only in

A. Chlamydomonas

B. Spirogyra

C. both 1 and 2

D. Funaria

Answer: C



Watch Video Solution

15. Meiosis in Spirogyra/Chlamydomonas/Ulothrix occurs

A. as the zygospore germinates

B. during conjugation

C. during palmella formation

D. during formation of gametes

Answer: A



Watch Video Solution

16. The product of conjugation of Spirogyra is called

A. zoospore

B. zygospore

C. endospore

D. akinete

Answer: B



Watch Video Solution

17. Asexual spores with flagella in algae are called

- A. zoospore
- B. zygospores
- C. aplanospores
- D. hypnospores

Answer: A



Watch Video Solution

18. In spirogyra lateral conjugation takes place in the cells of

- A. two adjacent cells of same filament
- B. two cells of different filaments
- C. among three filaments
- D. within one cell of a filament

Answer: B



Watch Video Solution

19. What is the shape of chloroplast in Spirogyra ?

- A. spiral, bank like
- B. cup like
- C. stellate like

D. U-like

Answer: A



Watch Video Solution

20. Gametes of Spirogyra are

A. biflagellated

B. uniflagellated

C. non-flagellated

D. diploid

Answer: C



Watch Video Solution

21. Choose the correct statement in Spirogyra.

A. Filaments showing scalariform conjugation are always dioecious

B. Filaments showing lateral conjugation are always monoecious

C. Filaments showing lateral conjugation may be monoecious

D. Asexual reproduction occurs by zoospores.

Answer: B



Watch Video Solution

22. Agar-agar, an important solidifying agent used in culture medium, is obtained from

A. red algae

B. green algae

C. kelps

D. yellow algae

Answer: A



Watch Video Solution

23. Red algae show maximum photosynthesis in blue green light. Their main pigment to trap this light is

- A. chlorophyll
- B. phycoerythrin
- C. chl a and xanthophyll
- D. carotenes.

Answer: B



Watch Video Solution

24. Main pigment in phaeophyceae (Brown algae) is

A. phycocyanin

B. phycoerythrin

C. fucoxanthin

D. chlorophyll b

Answer: C



Watch Video Solution

25. Food reserve in Rhodophyta is :-

A. floridean starch

B. laminarian starch

C. animal starch

D. none of these

Answer: A



Watch Video Solution

26. Reserve food in Phaeophyceae is

A. laminarin and manitol

B. glycogen and sorbitol

C. floridean starch

D. glucose and starch.

Answer: A



Watch Video Solution

27. Sieved septa/trumpet hyphae occur in

- A. kelps
- B. All green algae
- C. All red algae
- D. Marine algae.

Answer: A



Watch Video Solution

28. Agar,Alginic acid,Carragenin and Funori in sea weeds are

A. proteins

B. phycocolloids

C. acids

D. fats

Answer: B



Watch Video Solution

29. Red algae are similar to blue-green algae in possession of

A. similar reserve food

B. nucleus

C. phycobilins

D. gas-vascuoles

Answer: C



Watch Video Solution

30. Red algae are able to grow deep in sea as

A. they can trap blue green light of short wave length

in deep layer of water

B. they have clorophyll b to trap blue green light in

deep layer of water

C. Both 1 and 2

D. both wrong.

Answer: A



Watch Video Solution

31. Irish Moss is

A. Chondrus (a red alga)

B. Ulva (green alga)

C. Porphyra (red alga)

D. Gelidium (red alga)

Answer: A



Watch Video Solution

32. A colourless parasitic red algae is

- A. Harveyella
- B. Batrachospermum
- C. Porphyra (red alga)
- D. Cephaleuros

Answer: A



Watch Video Solution

33. Red rust of tea is caused by

- A. *Cephaleuros virescens*
- B. *Puccinia graminis*
- C. *Harveyella*
- D. *Chlamydomonas gametos*

Answer: A



Watch Video Solution

34. A student collected an alga and found that its cells contain both chl a and chl d as well as phycoerythrin but no chl b and flagella. The alga belongs to

A. Rhodophyceae

B. Phaeophyceae

C. Bacillariophyceae

D. Chlorophyceae

Answer: A



Watch Video Solution

35. Allophycocyanin is found in

A. Chlorophyceae

B. Rhodophyceae

C. Both 1 and 2

D. All marine algae

Answer: B



Watch Video Solution

36. The algal forms are mostly marine in

A. Chlorophyceae

B. Phaeophyceae

C. Ascomycetes

D. All of these

Answer: B



Watch Video Solution

37. Algae and fungi are characterised by the possession of

A. mitospores

B. chloroplast

C. multicellular jacketed sex organs

D. unicellular jacketed sex organs

Answer: A



Watch Video Solution

38. What is common in Thallophytes, Bryophytes and pteridophytes?

- A. Dependence on water
- B. Presence of conductive system
- C. Presence of cones
- D. Absence of vascular tissue.

Answer: A



Watch Video Solution

39. Most of the green algae are

- A. fresh water
- B. marine
- C. terrestrial

D. epiphytic/Epizoic

Answer: A



Watch Video Solution

40. Chlorophyll common between phaeophyceae and bacillariophyceae but absent in rhodophyceae is

A. chlorophyll a

B. chlorophyll b

C. chlorophyll c

D. chlorophyll e

Answer: C



Watch Video Solution

41. The pigment found only in some algae

A. chlorophyll a

B. xanthophyll

C. carotene

D. phycobilins

Answer: D



Watch Video Solution

42. The structure in algae helping in perennation to tide over drought are

- A. zoospores, hypnospores and aplanospores
- B. zoospores, akinetes, zygospores
- C. aplanospores, hypnospores and zygospores.
- D. none of the above

Answer: C



Watch Video Solution

43. A single thylakoid per granum is found in the chloroplast of

A. red algae

B. green algae

C. brown algae

D. yellow algae

Answer: A



Watch Video Solution

44. The evolutionary sequence is

A. Thallophyta-Bryophyta-Pteridophyta -Phanerogams

B. Protohyta-Phanerogams-Crypto-gams-Monocots

C. Archegoniatae-Embryophyte

D. Archegoniatae-Embryophyte-Phanerogams-

Monocots

Answer: A



Watch Video Solution

45. Sexual reproduction where a smaller and motile male gamete fuses with larger and motile female gamete known as

A. isogamy

B. anisogamy

C. oogamy

D. heterogamy

Answer: B



Watch Video Solution

46. Life cycle in Chlamydomonas / Ulothrix/ Spirogya is

A. haplontic

B. haplobiontic

C. diplontic

D. diplobiontic

Answer: A



Watch Video Solution

47. In Spirogyra, ladder like structure is formed in

- A. scalariform conjugation
- B. lateral conjugation
- C. direct conjugation
- D. parthenogenesis

Answer: A



Watch Video Solution

48. Which is known as Pond Scum/mermaids tresses?

A. Ulothrix

B. Nostoc

C. Spirogyra

D. Anabaena

Answer: C



Watch Video Solution

49. The gametangia and sporangia of Ulothrix are

A. jacketed and multicellular

B. jacketed and unicellular

C. nonjacketed and multicellular

D. non-jacketed and unicellular

Answer: D



Watch Video Solution

50. Alginic acid is present in the cell wall of

A. bacillariophyceae

B. Euglena

C. Laminaria

D. Diatoms

Answer: C



Watch Video Solution

51. In phaeophyceae, thylakoids are found in group os

A. 3's

B. 4's

C. 5's

D. 6's

Answer: A



Watch Video Solution

52. Match the following

{:(("Phaeophyceae","fucin"),("Cyanophyceae","r-

phycoerythrin"),("Rhodophyceae","c-phycoerythrin"),

("Diatoms","Chrysolaminarin":)}

A. 1-A,2-B,3-C,4-D

B. 1-A,2-C,3-B,4-D

C. 1-C,2-B,3-A,4-D

D. 1-B,2-A,3-D,4-C

Answer: B



Watch Video Solution

53. Plants lacking seed and vascular tissue but forming spores and embryo are

- A. bryophytes
- B. pteridophytes
- C. angiosperms
- D. gymnosperms

Answer: A



Watch Video Solution

54. Bryophytes grow in moist, humid places as

- A. they have no cuticle
- B. require water for fertilization
- C. they do not have roots

D. all of the above

Answer: D



Watch Video Solution

55. Bryophytes don't attain much height because

- A. they do not have vascular supply
- B. they do not have roots and mechanical tissue
- C. they require water for transport of sperms
- D. all of the above.

Answer: D



Watch Video Solution

56. Bryophytes can be distinguished from algae/fungi/thallophytes because they have

A. thallus,haploid ,gametophytic body

B. chloroplast

C. no conducting tissue

D. sterile jacket of cells around multicellular sex organs.

Answer: D



Watch Video Solution

57. Bryophytes show

- A. asexual reproduction & zygotic meiosis
- B. asexual reproduction & sporic meiosis
- C. no asexual reproduction but sporic meiosis
- D. gametophytic dominance and sporic meiosis

Answer: D



Watch Video Solution

58. Rhizoids differ from roots as

- A. rhizoids are always unicellular but roots are multicellular

B. rhizoids arise in gametophytes but roots in sporophytes

C. roots are branched but rhizoids are always unbranched.

D. all of the above.

Answer: B



Watch Video Solution

59. Predominant and largest gaemtophyte is of

A. Selaginella

B. Pinus

C. Moss

D. Rice

Answer: C



Watch Video Solution

60. Which one of the following is true moss

A. Cord moss

B. Club moss

C. Irish moss

D. All of the above.

Answer: A



[Watch Video Solution](#)

61. The spores produced in capsule in moss, germinate to form haploid structure called

- A. leafy gametophyte
- B. protonema
- C. prothallus
- D. peristome

Answer: B



[Watch Video Solution](#)

62. Sex organ of Funaria are

- A. projected and sessile
- B. projected and stalked
- C. embedded and stalked
- D. embedded and sessile

Answer: B



Watch Video Solution

63. Funaria is included in bryophytes because

- A. it is rootless

B. it is without vascular supply

C. its sporophyte is parasite and attached to gametophyte

D. it grows near water.

Answer: C



Watch Video Solution

64. Sporophyte of Funaria is

A. Parasite on gametophyte as it is non green

B. semiparasite on gametophyte as it is green

C. independent of gametophyte as it is green

D. none of the above

Answer: B



Watch Video Solution

65. Archegonium of Funaria secretes mucilage rich in

A. sucrose

B. glucose

C. malic acid

D. citric acid

Answer: A



Watch Video Solution

66. Polytrichum has

- A. heart shaped prothallus
- B. foot, seta and capsule
- C. vascular bundles
- D. mitospores

Answer: B



Watch Video Solution

67. The sporophyte of Funaria begins development within

A. antheridium

B. archegonium

C. capsule

D. protonema

Answer: B



Watch Video Solution

68. Sexual reproduction in bryophytes is

A. oogamous

B. isogamous

C. anisogamous

D. hologamy

Answer: A



Watch Video Solution

69. Bryophytes called amphibians of plant king-dom as

- A. they inhabits damp places
- B. they have tracheids
- C. their sex organs are multicellular and jacketed
- D. their reproductive phase requires water.

Answer: D



Watch Video Solution

70. Bryophytes differ from pteridophytes in

- A. having mitospores
- B. the absence of vascular tissue system
- C. lacking embryo stage
- D. all of the stage

Answer: B



Watch Video Solution

71. Match List I with List II and pick up the correct choice from the under assigned codes

List I

- (a) Thallophyta (c) Bryophyta
(b) Embryophyta (d) Tracheophyta

List II

- (I) Embryophyta excluding Tracheophyta
(II) Bryophyta and Tracheophyta
(III) Phycophyta and Mycophyta
(IV) Bryophyta and Pteridophyta
(V) Pteridophyta and Spermatophyta

- A. *a* *b* *c* *d*
 IV *II* *V* *I*
- B. *a* *b* *c* *d*
 III *II* *I* *V*
- C. *a* *b* *c* *d*
 IV *II* *I* *III*
- D. *a* *b* *c* *d*
 III *IV* *I* *V*

Answer: B



Watch Video Solution

72. A liver wort is

- A. a parasite causing infection of liver
- B. a kind of virus infecting the liver
- C. a flowering plant for treating liver disorders
- D. a plant without differentiation into roots, stem and leaves.

Answer: D



Watch Video Solution

73. Branched rhizoids and leafy gametophytes are characteristics of

A. all bryophytes

B. some bryophytes like mosses

C. algae

D. liverworts.

Answer: B



Watch Video Solution

74. In the life cycle of *Funaria*, spores are beginning of the generation

A. gametophyte

B. sporophyte

C. peristome

D. both 1 and 2

Answer: A



Watch Video Solution

75. Sphagnum is also called 'Peat Moss' because it

A. it grown in acidic marshes (bogs) and helps in peat

formation

B. it is found in peat

C. it retains water

D. it is fossilized quickly.

Answer: A



Watch Video Solution

76. Moss plant is a

A. gametophyte

B. sporophyte

C. sometimes gametophyte and sometimes sporophyte

D. predominantly gametophyte with sporophyte attached to it.

Answer: D



[Watch Video Solution](#)

77. Bryophytes are close to pteridophytes in having

- A. multicellular jacketed sex organs
- B. flagellated oosphere
- C. mitospores in life cycle
- D. all of the above

Answer: A



[Watch Video Solution](#)

78. To which would you assign a plant that has xylem and phloem, produces meiospores, embryo but lacks seeds and flowers?

- A. Bryophytes
- B. Pteridophytes
- C. Tracheophytes
- D. Spermatophytes.

Answer: B



[Watch Video Solution](#)

79. Vascular cryptogams and botanical snakes of plant kingdom are

- A. pteridophytes
- B. tracheophytes
- C. angiosperms
- D. spermatophytes

Answer: A



[Watch Video Solution](#)

80. Tracheophyte include

A. bryophytes,pteridophytes and spermatophytes

B. bryophytes,pteridophytes,gymnosperms and
angiosperms

C. pteridophytes and spermatophytes (gymnosperms
and monocotyledons)

D. pteridophytes and spermatophytes (gymnosperms
and angiosperms)

Answer: D



Watch Video Solution

81. Gametophytic and sporophytic phases are independent in

- A. bryophyte
- B. pteridophyte
- C. gymnosperms
- D. all of the above.

Answer: B



[Watch Video Solution](#)

82. Which one of the following is considered important in the development of seed habit

Or

Selaginella has the character of evolutionary importance.

That character is

A. seed habit and heterosporous nature

B. viviparity

C. rhizophore

D. spikes

Answer: A



Watch Video Solution

83. Heterosporous pteridophytes produce

- A. dioecious gametophytes
- B. monoecious gametophytes
- C. homothallic gametophytes
- D. hermaphrodite gametophytes

Answer: A



Watch Video Solution

84. Rhizophore in Selaginella is

- A. a root
- B. leaf
- C. organ sui genesis

D. a shoot

Answer: C



Watch Video Solution

85. Adiantum, Pteris/ferns are

A. heterosporous

B. homosporous

C. homogametic

D. isomerous

Answer: B



Watch Video Solution

86. The main plant body/dominant plant in life cycle of a fern/Pteridophytes is

- A. gametophyte (x)
- B. sporophyte (2x)
- C. apogamous
- D. aposporous

Answer: B



Watch Video Solution

87. Stem in ferns is underground, monopodial root stock and called

A. rhizome

B. corm

C. bulb

D. sucker

Answer: A



Watch Video Solution

88. Leaves of ferns are

A. fronds with reticulate venation

B. haploid

C. pinnately compound and grow by apical meristem

D. all of the above.

Answer: C



Watch Video Solution

89. Young fern leaves and rhizome are protected by :-

A. fronds with reticulate venation

B. leaf bases

C. ramenta

D. root stock

Answer: C



Watch Video Solution

90. Maiden Hair Fern is

A. Adiantum

B. Cheilanthis

C. Pteris

D. Dryopteris

Answer: A



Watch Video Solution

91. Sporangia bearing leaves in Pteridophytes are called

A. sporophylls

B. megaphylls

C. fronds

D. sorus

Answer: A



Watch Video Solution

92. Fern sperms (antherozoids) are

- A. multiciliated or multi flagellated and spirally coiled
- B. biciliated and coiled
- C. uninucleated and unflagellated
- D. multiciliated sickle shaped

Answer: A



Watch Video Solution

93. What represents the gametophytic generation in pteridophytes?

- A. Main plant body
- B. Heart shaped prothallus

C. Indusium

D. Stomium

Answer: B



Watch Video Solution

94. A collection of sporangia attached to placenta and covered over by indusium is known as

A. sorus

B. sporophyll

C. ramenta

D. spike

Answer: A



Watch Video Solution

95. Archegonium of *Funaria* secretes mucilage rich in

A. sucrose

B. malic acid

C. glucose

D. citric acid

Answer: B



Watch Video Solution

96. A thick, multicellular covering called indusium in ferns over sori is meant for

- A. protection
- B. producing spores
- C. help in dispersal
- D. has no role

Answer: A



Watch Video Solution

97. Antheridium in ferns is

- A. multicellular and jacketed

- B. stalked, hemispherical and borne ventrally in posterior part between rhizoids
- C. its jacket has 32-48 cells
- D. all of the above.

Answer: A



Watch Video Solution

98. Life cycle in ferns is

- A. haplontic
- B. diplohaplontic
- C. haplo-haplontic

D. diplontic

Answer: B



Watch Video Solution

99. First land plant was represented by

A. Ferns

B. Grasses

C. Gymnosperms

D. Algae.

Answer: A



Watch Video Solution

100. Spike moss is

- A. Selaginella
- B. Funaria
- C. Lycopodium
- D. Adiantum

Answer: A



Watch Video Solution

101. Ferns are characterised by

A. cambium

B. xylem vessels

C. young leaves with circinate ptyxis and presence of
ramenta

D. all of the above.

Answer: C



Watch Video Solution

102. Ferns resemble with mosses in one respect

A. both are embryophytes

B. both are tracheophytes

C. both are sporophytes

D. both are aquatic

Answer: A



Watch Video Solution

103. Heteromorphic alternation of generation is found in

A. Spirogyra

B. Mucor

C. Selaginella

D. All of these.

Answer: C



[Watch Video Solution](#)

104. In ferns, circinate ptyxis (vernation) is defined as

- A. arrangement of leaf gaps in stems
- B. coiling of young leaves
- C. arrangement of sori on leaves
- D. attachment of ramenta on young parts.

Answer: B



[Watch Video Solution](#)

105. If sperms of moss and fern are put together near the archegonium of fern, only the sperms of fern find entry into archeogonium, the reason being that

- A. sperms of moss are killed by larger sperms of fern
- B. archegonia of fern secretes a toxoid to kill moss of fern.
- C. archegonia of fern secrete mucilage rich in malic acid to attract sperms of fern only
- D. sperms of moss are less motile and find difficulty in entering archegonium.

Answer: C



Watch Video Solution

106. What may be the possible advantage occurring out of the presence of antheridia and archegonia on the underside of a fern prothallus?

- A. They are protected from direct rays of the sun.
- B. Capillary water accumulates on the underside of prothallus between its lower surface and the soil surface sex organs projecting in this water can be readily fertilised by the ciliated sperms which are chemotactically attracted by the archegonia
- C. The sex organs remain protected from wind

D. Nutrients manufactured by the green prothallus can readily seep downwards to the sex organs due to the action of gravity.

Answer: B



Watch Video Solution

107. Walking fern is named so as

A. it knows walking

B. it is dispersed through walking of animals in forests

C. its spores are able to move with wind

D. it spreads and propagates vegetatively by its leaf tips.

Answer: D



Watch Video Solution

108. A water fern capable of fixing atmospheric nitrogen and used as biofertilizer.

- A. Azolla
- B. Nostoc
- C. Adiantum
- D. Spirulina

Answer: A



Watch Video Solution

109. Which group of gymnosperms is close to angiosperms?

A. Gnetales

B. Ginkgoales

C. Cycadales

D. Coniferales

Answer: A



Watch Video Solution

110. Gymnosperms are different from angiosperms in

- A. absence of seeds
- B. absence of ovary
- C. absence of ovule
- D. absence of sieve cells.

Answer: B



Watch Video Solution

111. Which one constitutes the dominant vegetation in colder regions?

A. Dicots

B. Gymnosperms

C. Monocots

D. Tracheophytes

Answer: B



Watch Video Solution

112. Which one of the following has not changed for the last several thousand years

A. *Pinus excelsa*

B. *Ginkgo biloba*

C. Welwitschia

D. Sequoia

Answer: B



Watch Video Solution

113. Largest ovules, largest male and female gametes and tallest trees are found among

A. angiosperms

B. tree ferns and some monocots

C. gymnosperms

D. dicots

Answer: C



Watch Video Solution

114. Siphonogamy in traceophytes

- A. eliminates dependence on water
- B. brings pollen grains together
- C. carries spores
- D. protects embryo

Answer: A



Watch Video Solution

115. Cycas is a

- A. living fossil
- B. fossil
- C. endangered species
- D. exotic species.

Answer: A



Watch Video Solution

116. The cortex and pith of stem Cycas serves as a source of 'Sago' which is a

- A. proteins

B. cellulose

C. starch

D. mixture of starch and protein.

Answer: C



Watch Video Solution

117. Cycas has the largest

A. ovule and female cone

B. largest male gametophyte

C. sperm

D. all of the above.

Answer: C



Watch Video Solution

118. Cycas is

A. hermaphrodite

B. dioecious

C. monoecious

D. none of these

Answer: B



Watch Video Solution

119. Organised female cone is absent in

A. Ephedra

B. Pinus

C. Cycas

D. None of these

Answer: C



Watch Video Solution

120. Cycas differs from Pteris in having

A. vessels and tracheids

B. motile sperms

C. pollen tube

D. archegonia

Answer: B



Watch Video Solution

121. Coralloid roots of *Cycas* are useful in

A. absorption of water

B. fixation

C. absorption and fixation of nitrogen

D. respiration from air.

Answer: C



Watch Video Solution

122. Coralloid roots of *Cycas* possess a symbiotic alga

A. *Aulosira*

B. *Anabaena*

C. *Oscillatoria*

D. *Chlorella*

Answer: B



Watch Video Solution

123. Phloem of gymnosperms differ from angiosperms in

- A. having no companion cells
- B. having no sieve cells
- C. having phloem fibre
- D. having phloem parenchyma

Answer: A



Watch Video Solution

124. Foliage leaves (needles) in Pinus are borne by

- A. dwarf shoots

B. long shoots

C. both 1 and 2

D. female strobilus

Answer: A



Watch Video Solution

125. At the time of dehiscence winged pollen grain of Pinus is

A. 1 celled

B. 4 celled

C. 3 celled

D. 2 celled

Answer: B



Watch Video Solution

126. Simplest and highly reduced archegonium is found in

A. Pinus

B. Fern

C. Bryophytes

D. Liver worts/mosses

Answer: A



Watch Video Solution

127. Microsporangia of *Cycas* occur over microsporophyll

- A. abaxial
- B. adaxial
- C. lateral
- D. margin.

Answer: A



Watch Video Solution

128. Number of generations present in *Pinus* seed are

A. 2

B. 3

C. 1

D. 4

Answer: B



Watch Video Solution

129. Ploidy in wing of pollen grain and wing of seed of Pinus is

A. x in pollen grain and $2x$ in seed

B. $2x$ in pollens and $2x$ in seed

C. being an outgrowth, chromosomes are absent

D. $1/2 x$ in wing of pollens and polyploidy in seed.

Answer: A



Watch Video Solution

130. The phenomenon of sulphur shower in pine forest is due to

A. dispersal of winged pollens of Pinus

B. dispersal of winged seeds of Pinus

C. bursting of thrid year female cone of Pinus

D. none of the above

Answer: A



Watch Video Solution

131. Which is homologous?

- A. Leaves of Moss and Selaginella
- B. Roots of ferns and moss
- C. Endosperm of Pinus and prothallus of Adiantum
- D. Pinus endosperm & endosperm of Maize

Answer: C



Watch Video Solution

132. In pinus

- A. seeds and ovules are winged
- B. endosperm is triploid
- C. fruits and flowers absent and seeds are naked
- D. all of the above

Answer: C



Watch Video Solution

133. Chilgoza' is a fruit, obtained from a gymnosperm which is

- A. Pinus Roxburghii

B. *Pinus gerardiana*

C. *Cycas revoluta*

D. *Abies balsamiana*

Answer: B



Watch Video Solution

134. Ephedrine obtained from the stem of *Ephedra* is given to cure

A. gastric disorders

B. respiratory disorders

C. arthritis

D. all of the above.

Answer: B



Watch Video Solution

135. No Gymnosperms is

- A. annual and herbaceous
- B. perennial and herbaceous
- C. xerophyte and woody
- D. tree and shrubby

Answer: A



Watch Video Solution

136. Vessels are absent in the xylem of

- A. angiosperms
- B. monocots
- C. gymnosperms excluding gnetales
- D. pteridophytes excluding ferns.

Answer: C



Watch Video Solution

137. One of the main evolutionary features of the alternation of generations from algae to flowering plants

is.

- A. gradual elaboration of gametophyte
- B. gradual elaboration of sporophyte
- C. elimination of sporophytic tissue
- D. elimination of gametophyte.

Answer: B



[Watch Video Solution](#)

138. In which of the following the angiosperms resemble the Gymnosperms

- A. nature of endosperm

B. presence of vessels

C. siphonogamy

D. double fertilization.

Answer: C



Watch Video Solution

139. In gymnosperms and angiosperms the pollen tube carries the male gamete to the site of fertilization and thus does not require water for fertilization. It is referred as

A. porogamy

B. siphonogamy

C. mesogamy

D. syngamy.

Answer: B



Watch Video Solution

140. which one of the following statements is correct?

A. Vascular cryptogams are all heterosporous

B. vascular cryptogams are all homosporous

C. Archegoniates are all homosporous

D. Spermatophytes are all heterosporous.

Answer: D



[Watch Video Solution](#)

141. Cycas has 2 cotyledons yet it is classified as Gymnosperm and not as dicot plant because

- A. it resembles date palm/monocot in appearance.
- B. it has compound leaves
- C. its ovules are naked
- D. it bears megasporophylls

Answer: C



[Watch Video Solution](#)

142. In *Cycas* pollen grains shed at

- A. 2 celled stage
- B. 3 celled stage
- C. 4 celled stage
- D. 5 celled stage

Answer: B



Watch Video Solution

143. What is true for *Cycas*?

- A. *Cycas* is dioecious

B. Ovules without integument

C. Largest female cone

D. All of the above.

Answer: A



Watch Video Solution

144. Which is incorrect about *Cycas*

A. Its xylem has vessels

B. Its young leaves show circinate vernation

C. It does not have organised female flower

D. motile sperms

Answer: A



Watch Video Solution

145. Cycas reproduces vegetatively by

A. sporophyllis

B. bulbils

C. fragmentation

D. rhizome

Answer: B



Watch Video Solution

146. Which one is common between Funaria and Pinus?

- A. No fruits are produced
- B. No seeds are produced
- C. Pollen tube is formed
- D. Antheridia and archegonia are present

Answer: A



Watch Video Solution

147. Among the following, which does not belong to sporophyte generation in Pinus?

- A. Long shoot

B. Dwarf shoot

C. roots are branched but rhizoids are always unbranched.

D. Endosperm

Answer: D



Watch Video Solution

148. Needle in Pinus represents

A. root

B. scale leaf

C. foliage leaf

D. spur

Answer: C



Watch Video Solution

149. The male cone of Pinus is formed of

Or

In pinus male cone bears is large number of

A. antheridia

B. megasporophylls/green

C. microsporophylls

D. ligules

Answer: C



Watch Video Solution

150. Seeds of Pinus are

- A. adaxial, endospermic and potycotyledonous
- B. abaxial, monocotyledonous and endospermic
- C. hypogeal, endospermic and monocot
- D. monocotyledonous, epigeal.

Answer: A



Watch Video Solution

151. Which of the following is not a correct match?

- A. Maiden hair fern: Ginkgo
- B. Bog Moss : Sphagnum
- C. Cord/green moss: Funaria
- D. Walking fern : Adiantum

Answer: A

 [View Text Solution](#)

152. Following are given some trends in the evolution of plants

- A. origin of vascular system

B. origin of rhizoids

C. origin of seeds

D. origin of flowers.

Answer: C



Watch Video Solution

153. Characteristic of Angiosperms which distinguish them from gymnosperms

A. presence of fruits and flowers

B. double fertilization and triploid endosperm formed after double fertilization

C. companion cells in phloem and vessels in xylem

D. all of the above.

Answer: D

 [Watch Video Solution](#)

154. Beginning with germination of a moss spore, what is the sequence of structures that develop after germination?

I. embryo II. Gametes III. Sporophyte IV. Potonema V. gametophore

A. IV,V,III,I,II

B. V,IV,III,II,I

C. III,IV,V,II,I

D. IV,V,II,I,III

Answer: D



Watch Video Solution

155. Angiosperms resemble gymnosperms in

A. presence of companion cells

B. type of fertilization

C. presence of ovules

D. nature of endosperm

Answer: C



[Watch Video Solution](#)

156. An example of a marine angiosperm thriving in shallow seas is

A. Zostera

B. Wolffia

C. Pistia

D. Rhizophora

Answer: A



[Watch Video Solution](#)

157. Which one of the following is considered important in the development of seed habit

Or

Selaginella has the character of evolutionary importance.

That character is

- A. Haplontic life cycle
- B. Free-living gametophyte
- C. Dependent sporophyte
- D. Heterospory

Answer: D



Watch Video Solution

158. Which of the following is grouped under phanerogams?

A. Algae show embryo stage

B. Bryophytes

C. Gymnosperms

D. Pteridophytes

Answer: C



Watch Video Solution

159. The stamen in angiosperms is homologous to which part in gymnosperm and pteridophytes?

A. Microsporangium

B. Micorosporophyll

C. Megasporophyll

D. Male gametophyte

Answer: B



Watch Video Solution

160. The megasporophyll of vascular plants is analogous to which structure in angiosperms

A. stamen

B. ovule

C. carpel

D. leaf

Answer: C



Watch Video Solution

161. To which group of plants does the Banyan tree belong

A. angiosperms

B. Gymnosperms

C. cryptogams

D. phaeophyta

Answer: A



Watch Video Solution

162. Mark the national tree

- A. *Mangifera indica* (Mango tree)
- B. *Ficus benghalensis* (banyan tree)
- C. *Ficus religiosa* (pipal tree)
- D. *Azadirachta indica* (Neem tree)

Answer: B



Watch Video Solution

163. Of the four widely known systems of classification one remains less phylogenetic and more natural, which is of

- A. Engler & Prantl
- B. Benth & Hooker
- C. Rendle
- D. Hutchinson

Answer: B



Watch Video Solution

164. Genera Plantarum was written by

A. Benth and Hooker

B. Hutchinson

C. Rendle

D. Engler and Prantl

Answer: A



Watch Video Solution

165. Dryopteris differs from Funaria in having

A. an independent gametophyte

B. an independent sporophyte

C. swimming antherozoids

D. archegonia

Answer: B



Watch Video Solution

166. Angiosperms have dominated the land flora primarily by their

- A. nature of self pollination
- B. property of producing large number of seeds
- C. domestication by man
- D. power of adaptability in diverse habitat.

Answer: D



[Watch Video Solution](#)

167. In which of the following group, all the organisms are homosporous

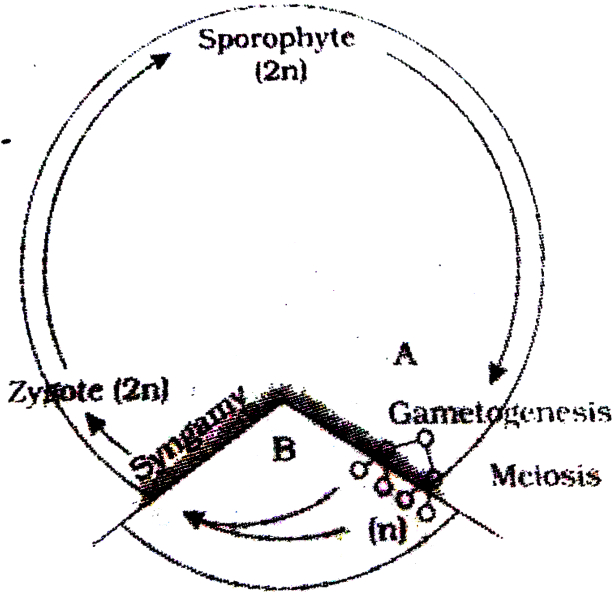
- A. Funaria,Salvinia,Dryopteris
- B. Azolla,Selaginella,Anthoceros
- C. Salvinia,Cedrus,Funaria
- D. Sphagnum,Pteris,Adiantum

Answer: D



[Watch Video Solution](#)

168. See the given life cycle pattern and choose the option which it correctly represents.



- A. Haplontic
- B. Diplontic
- C. Haplo-diplontic
- D. A or C

Answer: B



Watch Video Solution

169. Read the following statements carefully

(i) Protonema is found in mosses and is absent in liverworts.

(ii) In Marchantia, the sporophyte is divided into the foot, seta and capsule

(iii) Archegonia are partially embedded in pteridophytes

(iv) Gymnosperms do not possess vessels in xylem except in some gnetophytes.

A. i,ii,iii

B. ii,iv

C. i,iii,iv

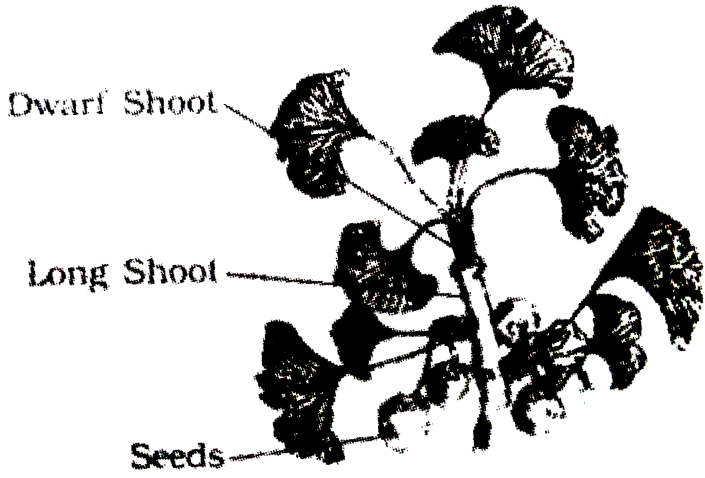
D. All are correct.

Answer: C



Watch Video Solution

170. Find the correct match which identifies these diagrams



(A)

Antherial branch

Branches

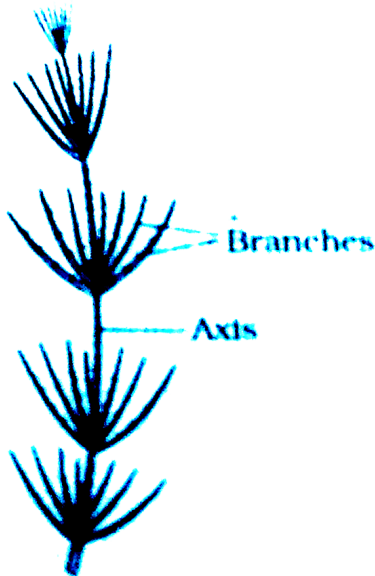


Archegonial branch

(B)



(C)



Branches

Axis

(D)

- A. A B C D
Chara Sphagnum Salvinia Ginkgo

- B.

<i>A</i>	<i>B</i>	<i>C</i>	<i>D</i>
Ginkgo	Chara	Sphagnum	Salvinia
- C.

<i>A</i>	<i>B</i>	<i>C</i>	<i>D</i>
Sphagnum	Ginkgo	Chara	Salvinia
- D.

<i>A</i>	<i>B</i>	<i>C</i>	<i>D</i>
Ginkgo	Sphagnum	Salvinia	Chara

Answer: D



Watch Video Solution

171. The algal group which most biologists believe to have led to evolution of land plants is

- A. phaeophyta
- B. Rhodophyta
- C. Chlorophyta

D. Chrysophyta

Answer: C



Watch Video Solution

172. Phycocolloids are found in the cell walls of

A. Diatoms

B. Spirogyra

C. Red and brown algae

D. All algae

Answer: C



Watch Video Solution

173. Which one of the following is not characteristic of all divisions of vascular plants?

- A. An alternation of generations
- B. The development of seeds
- C. Differentiation into roots, stems and leaves
- D. Xylem and phloem for transporting materials between roots and leaves.

Answer: B



Watch Video Solution

174. Red algae differs from green and brown algae in

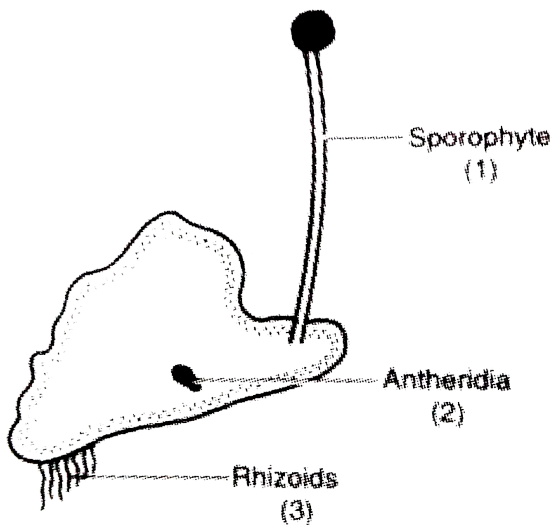
- A. No chlorophyll a
- B. No differentiated cells
- C. No phycocyanin within their cells
- D. No flagellated stages in their life cycles

Answer: D



Watch Video Solution

175. Given is a picture of bryophyte. The correct ploidy levels of the indicated structures are



A. $1:2n, 2:n, 3:n$

B. $1:n, 2:n, 3:n$

C. $1:2n, 2:2n, 3:2n$

D. $1:2n, 2:n, 3:2n$

Answer: A



Watch Video Solution

176. Bryophytes resemble resemble algae in the following aspects

A. Differentiation of the plant body into root, stem and heterotrophic mode of nutrition

B. Thallus-like plant body, lack of vascular tissue: absence of root: and autotrophic mode of nutrition

C. Thallus-like plant body, presence of roots, and autotrophic mode of nutrition

D. Filamentous body: presence of vascular tissue: and autotrophic mode of nutrition

Answer: B





[Watch Video Solution](#)

177. Funaria differs from Pteridium in the absence of

A. Root

B. Seed

C. Archegonia

D. Embryo

Answer: A



[Watch Video Solution](#)

178. Prothallus is

A. Gametophyte,monoecious,autotroph present in
pteridophytes

B. Gametophyte,monoecious,autotroph found in
bryophytes

C. Sporophyte,dioecious,heterotroph found in
bryophytes

D. Gametophyte,dioecious,heterotroph present in
pteridophytes

Answer: A



Watch Video Solution

179. In gymnosperms how many male gametes are produced by each pollen grain

A. 4

B. 3

C. 2

D. 1

Answer: C



[Watch Video Solution](#)

180. Which arrangements of the organisms represents a rank ordering (based on size/importance) from dominant

gametophyte on the left to dominant sporophyte on the right?

- A. Polytrichum, Cycas, Equisetum
- B. Lycopodium, Zosteria, Riccia
- C. Sphagnum, Pteridium, Cedrus
- D. Pinus, Selaginella, Marchantia

Answer: C



Watch Video Solution

181. Red algae do not have

- A. zoospores, hypnospores and aplanospores

- B. Cellulose in cell wall
- C. Floridean starch
- D. Sexual reproduction.

Answer: A



Watch Video Solution

182. Select the wrong statement

- A. Gymnosperm do not have antheridia
- B. Cycas and ferns have multiflagellate gametes
- C. Selaginella is a heterosporous non seed plant
- D. Pinus tree is dioecious

Answer: D



Watch Video Solution

183. Ovule of Pinus can be called

- A. Female gametophyte
- B. Male gametophyte
- C. Megasporangium
- D. Integumented megasporangium

Answer: D



Watch Video Solution

184. Conifers differ from grasses in the

- A. Production of seeds from ovules
- B. Lack of xylem tracheids
- C. Absence of pollen tubes
- D. Formation of endosperm before fertilization.

Answer: D



Watch Video Solution

185. "Ordines Anomali" of Benth and Hooker includes

- A. Seed plants showing abnormal forms of growth and development
- B. Plants represented only in fossil state.
- C. Plants described in the literature but which Bentham and Hooker did not see in original
- D. A few orders which could not be placed satisfactorily in the classification.

Answer: D



Watch Video Solution

186. Which of the following is a wrong combination?

A. Haploid endosperm, archegonia present but antheridium absent-Gymnosperms

B. Triploid endosperm and 7-celled female gametophyte called embryo sac-Angiosperms

C. Embryo stage absent, reproduction by mitospores-Algae

D. Gametophyte independent, biflagellate gametes and reproduction by accessory spores-Mosses.

Answer: D



Watch Video Solution

187. Green algae are also included among the items carried by astronauts in a space ship. Which of the following are the reasons for this?

1. These being very simple plants, are amenable to a variety of experiments. 2. These may provide nourishment to the persons on the space ship. 3. These act as a source of oxygen.

Select the correct answer using the codes given below.

A. 1,2 and 3

B. 1 and 3

C. 1 and 2

D. 2 and 3

Answer: A



Watch Video Solution

188. Consider the following pigments 1. Chlorophyll a 2. Chlorophyll b 3. Chlorophyll c 4. Carotenes 5. Biliproteins 6. Xanthophylls

The characteristic photosynthetic pigments present in Chlorophyceae would include

- A. 1,2,3 and 4
- B. 1,3,4, and 5
- C. 2,3,5 and 6
- D. 1,2,4 and 6

Answer: D



Watch Video Solution

189. Which one of the following pairs is not correctly matched?

A. Red Sea: *Trichodesmium erythreum* a

cyanobacterium

B. Red Tides: *Rhodomenia*, a red algae

C. Red Snow: *Chlamydomonas nivalis*, a green algae

D. Red Rust of Tea: *Cephaleuros virescens*, a green

algae

Answer: B



Watch Video Solution

190. Consider the following statements

1. In pteridophytes, the phloem lacks companion cells.
2. The xylem lacks vessels in majority of pteridophytes.
3. Heterosporous pteridophytes have monoecious gametophytes.
4. Water is essential for fertilization in pteridophytes.

Which of these statements are correct?

A. 1,2,3 and 4

B. 2,3 and 4

C. 1 and 3

D. 1,2 and 4

Answer: D



Watch Video Solution

191. Which one of the statements is correct ?

A. Leaves of conifers are perennial

B. All vascular plants have Sieve Tube Members

C. The red and edible flesh of strawberry is the carpel
tissue

D. Conifers have motile gametes.

Answer: A



Watch Video Solution

192. Which of the following structures in *Pinus* are haploid

- A. Megaspore, endosperm and embryo
- B. Microspore, megaspore and endosperm
- C. Megaspore, integument and root
- D. Microspore, leaf and endosperm

Answer: B



Watch Video Solution

193. More than one answer may be correct : *Marchantia polymorpha*

1. Is dioecious

2. Possesses antheridiophores and archegoniophores

3. Lacks foot and seta in its sporophyte

4. Is heterosporous.

A. 1 and 2

B. 3 and 4

C. 1,2 and 3

D. 2 and 3

Answer: A



Watch Video Solution

194. Consider the following statements

1. The thylakoids of blue-green algae are arranged singly in the stroma of chloroplasts.
2. In blue-green algae, the thylakoids are not only the sites for photosynthesis but also for respiration

Which of the statements given above is/are correct?

- A. 1 only
- B. 2 only
- C. both 1 and 2
- D. Neither 1 nor 2

Answer: B



195. In gymnosperms the pollen chamber represents

- A. A cavity in the ovule in which pollen grains are stored after pollination
- B. An opening in the megagametophyte through which the pollen tube approaches the egg
- C. The microsporangium in which pollen grains develop
- D. A cell in the pollen grain in which the sperms are formed.

Answer: A



Watch Video Solution

196. Bryophytes can be compared with amphibians since both are

(i) Autotrophic (ii) Dependent on water for reproduction
(iii) Without endoskeleton (iv) Devoid of impervious body surface (v) With separate sexes

- A. ii,iv
- B. i,ii,iv
- C. ii,iii,iv
- D. i,iii,iv

Answer: A



View Text Solution

197. In which of the following groups all the organisms contain chlorophyll c

- A. Ectocarpus, Fucus, Sargassum, Laminaria
- B. Macrocystis, Batrachospermum, Polysiphonia, Characium
- C. Chlamydomonas, Asterocystis, Ulothrix, Gelidium
- D. Harveyella, Chondrus, Volvox, Chlorella

Answer: A



Watch Video Solution

198. In which of the following group all the organisms contain phycobilins?

- A. Anabaena, Gelidium, Nereocystis, Zoochlorella
- B. Nostoc, Porphyra, Chondrus, Batrachospermum
- C. Oscillatoria, Sargassum, Volvox, Fucus
- D. None of the above.

Answer: B



Watch Video Solution

199. In which of the following group all the organisms lack motile stages in the life cycle?

A. Chlamydomonas, Ulothrix, Sargassum

B. Chondrus, Gelidium, Batrachospermum

C. Chlorella, Polysiphonia, Volvox

D. All of the above

Answer: B



Watch Video Solution

200. Go through the following statements

(i) IN chlorophyceae the flagella are 2 in number, unequal

in size and lateral in position

(ii) In phaeophyceae flagella are 2-8 in number, equal in size and apical in position (iii) Chlorella and Spirulina are rich in proteins and are used as food supplements even by space travellers. (iv) The leaves in pteridophyta are microphylls as in Selaginella or macrophylls as in ferns.

Which of these are correct

A. i,ii,iii

B. ii,iii

C. i,ii,iv

D. iii,iv

Answer: D



Watch Video Solution

201. In a moss the sporophyte

A. arises from a spore produced from the gametophyte

B. manufactures food for itself, as well as for the gametophyte

C. is partially parasitic on the gametophyte

D. Produces gametes that give rise to the gametophyte

Answer: C



Watch Video Solution

202. Which of these is mismatched

- A. phaneros-visible
- B. kryptos-concealed
- C. gymno-naked
- D. thallusu-diploid

Answer: D



Watch Video Solution

203. Which of the following is a vascular cryptogam

- A. Marchantia

B. Cedrus

C. Equisetum

D. Ginkgo

Answer: C



Watch Video Solution

204. Which one of the following plants is monoecious

A. Cycas

B. Papaya

C. Marchantia

D. Pinus

Answer: D



Watch Video Solution

205. Which one of the following has haplontic life cycle

A. Ustilago

B. Wheat

C. Funaria

D. Polytrichum

Answer: A



Watch Video Solution

206. Mannitol (sugar alcohol) is the stored food in

- A. Fucus
- B. Gracillaria
- C. Chara
- D. Porphyra

Answer: A

 [Watch Video Solution](#)

207. Young leaves of Cycas show

- A. Simple venation

- B. Circinate venation
- C. Alternate arrangement
- D. Opposite arrangement

Answer: B



Watch Video Solution

208. Algae have cell wall made up of

- A. Cellulose, hemicellulose and pectins
- B. Cellulose, galactans and mannans
- C. Hemicellulose, pectins and proteins
- D. Pectins, cellulose and proteins

Answer: B



Watch Video Solution

209. Which of the following algal groups has no motile stage

A. Brown

B. Yellow

C. Red

D. Green

Answer: C



Watch Video Solution

210. Sphagnum is an example of

A. Moss

B. Pteridophyte

C. Algae

D. Gymnosperm

Answer: A



Watch Video Solution

211. Consider the following four statements whether they are correct or wrong.

- A. The sporophyte in liverworts is more elaborate than that in mosses
- B. Salvinia is heterosporous
- C. The life-cycle in all seed-bearing plants is diplontic
- D. In Pinus male and female cones are borne on different trees

Answer: B



Watch Video Solution

212. Selaginella and Salvinia are considered to represent a significant step toward evolution of seed habit because

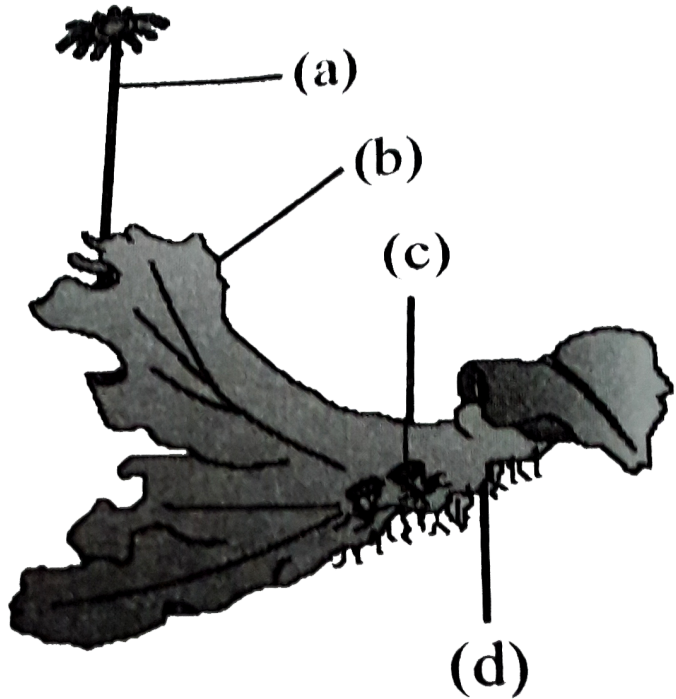
- A. Female gametophyte is free and gets dispersed like seeds
- B. Female gametophyte lacks archegonia
- C. Megaspores possess endosperm and embryo surrounded by seed coat
- D. Embryo develops in female gametophyte which is retained on parent sporophyte

Answer: D



Watch Video Solution

213. Examine the figure given below and select the right option given all the four parts (a,b,c,d) correctly



identified.

A.

<i>a</i>	<i>b</i>	<i>c</i>	<i>d</i>
Archegonia	Female thallus	Gemmacup	Rhizoids

B.

<i>a</i>	<i>b</i>	<i>c</i>	<i>d</i>
Archegoniphore	Female thallus	Bud	Foot

C. *a* *b* *c* *d*
Seta Sporophyte Protonema Rhizoids

D. *a* *b* *c* *d*
Anteridiophore Male thallus Globule Roots

Answer: A



Watch Video Solution

214. Archegoniophore is present in

A. Marchantia

B. Chara

C. Adiantum

D. Funaria

Answer: A



[Watch Video Solution](#)

215. Compared with the gametophytes of the bryophytes, the gametophytes of vascular plants tend to be:-

- A. smaller but to have larger sex organs
- B. larger but to have smaller sex organs
- C. larger and to have larger sex organs
- D. smaller and to have smaller sex organs

Answer: D



[Watch Video Solution](#)

216. The gametophyte is not an independent, free-living generation in

A. Polytrichum, Cycas, Equisetum

B. Adiantum

C. Marchantia

D. Pinus

Answer: D



Watch Video Solution

217. Asexual reproduction in Liverworts takes place by the formation of specialized structures called

A. Gemmae

B. zoospores,akinetes,zygospores

C. Sporangia

D. Microspores

Answer: A



Watch Video Solution

218. Pinus belongs to the class

A. gnetopsida

B. cycadopsida

C. coniferopsida

D. sphenopsida

Answer: C



Watch Video Solution

219. Read the following five statements (A-E) and answer as asked next to them

(A) In Equisetum the female gametophyte is retained on the parent sporophyte

(A) In Equisetum the female gametophyte is retained on the parent sporophyte

(B) In ginkgo male gametophyte is not independent

(C) Sexual reproduction in Volvox is isogamous

(E) The spores of slime moulds lack cell walls

How many of the above statements are correct

A. Four

B. One

C. Two

D. Three

Answer: B



Watch Video Solution

220. Which one of the following pairs is wrongly matched?

- A. viroids-RNA
- B. Mustard-Synergids
- C. Ginkgo-Archegonia
- D. Salvinia-Prothallus

Answer: D

 [Watch Video Solution](#)

221. How many organism in the list given below are autotrophs Lactobacillus, Nostoc, Chara, Nitrosomonas, Nitrobacter, Streptomyces, Sacharomyces, Trypanosoma, Porphyra Wolfia

A. Six

B. Three

C. Four

D. Five

Answer: A



Watch Video Solution

222. Cycas and Adiantum resemble each other in having

A. Motile sperms

B. Cambium

C. Vessles

D. Seeds

Answer: A



Watch Video Solution

223. Which one of the following is common to multicellular fungi, filamentous algae and protonema of mosses

- A. Members of kingdom plantae
- B. Mode of Nutrition
- C. Multiplication by fragmentation
- D. Diplontic life cycle

Answer: C





[Watch Video Solution](#)

224. Which one of the following is a correct statement

- A. In gymnosperms female gametophyte is free-living
- B. Antheridiophores and archegoniophores are present in pteridophytes
- C. Origin of seed habit can be traced in pteridophytes
- D. Pteridophyte gametophyte has a protonemal and leafy stage.

Answer: C



[Watch Video Solution](#)

225. Sex-organs of pteridophytes are

- A. Multicellular and jacketed
- B. Unicellular and jacketed
- C. Unicellular and non jacketed
- D. Multicellular and non jacketed

Answer: A



Watch Video Solution

226. The chloroplasts of algae usually lack

- A. Quantasomes

B. Lamellae

C. Pigments reticulum

D. Grana

Answer: D



Watch Video Solution

227. First amphibian plants of the plant kingdom are

A. Thallophytes

B. Bryophytes

C. pteridophytes

D. Gymnosperms

Answer: B



Watch Video Solution

228. The leaves of fern plants are called

- A. macrophylls
- B. microphylls
- C. sporophylls
- D. megasporophylls

Answer: A



Watch Video Solution

229. The tallest tree species of the gymnosperms is

A. Cycas

B. Pinus

C. Sequoia

D. None of the Above

Answer: C



Watch Video Solution

230. Besides paddy fields, cyanobacteria are also found inside vegetative part of:

A. Equisetum

B. Psilotum

C. Pinus

D. Cycas

Answer: D



Watch Video Solution

231. Select the wrong statement

A. In Oomycetes female gamete is smaller and motile,

while male gamete is larger and non-motile

B. Chlamydomonas exhibits both isogamy and

anisogamy and Fucus shows oogamy

C. Isogametes are similar in structure, function and behaviour

D. Anisogametes differ either in structure, function or behaviour.

Answer: A



Watch Video Solution

232. Which of the following represent maximum number of species among global biodiversity

A. Fungi

B. Mosses and Ferns

C. Algae

D. Lichens

Answer: A



Watch Video Solution

233. Male gametophyte with least number of cells is present in

A. Pinus

B. Pteris

C. Funaria

D. Lilium

Answer: D



Watch Video Solution

234. Which one of the following shows isogamy with non-flagellated gametes

- A. Spirogyra
- B. Sargassum
- C. Ectocarpus
- D. Ulothrix

Answer: A



Watch Video Solution

235. An alga which can be employed as food for humans being is

- A. polysiphonia
- B. Ulothrix
- C. Chlorella
- D. Spirogyra

Answer: C



Watch Video Solution

236. Which of the following is responsible for peat formation?

A. Sphagnum

B. Marchantia

C. Riccia

D. Funaria

Answer: A



Watch Video Solution

237. In which of the following, gametophyte is not independent in free living ?

A. Marchantia

B. Pteris

C. Pinus

D. Funaria

Answer: C



Watch Video Solution

238. Read the following five statements (A to E) and select the option with all correct statement

(A) Mosses and Lichens are the first organisms to colonise a bare rock.

(B) Selaginella is a homoporous pteridophyte.

(C) Coralloid roots in *Cycas* have VAM.

(D) Main plant body in bryophytes is gametophytic whereas in pteridophytes it is sporophytic.

(E) In Gymnperms, male and female gametophytes are present within sporangia located on sporophyte.

A. B,C and D

B. A,D and E

C. B,C and E

D. A,C and D

Answer: B



Watch Video Solution

239. Male gametes are flagellated in

- A. Anabaena
- B. Ectocarpus
- C. Spirogyra
- D. Polysiphonia

Answer: B



Watch Video Solution

240. Which one of the following statements is wrong?

- A. Agar-agar is obtained from Gelidium and Gracilaria

B. Chlorella and Spirulina are used as space food

C. Mannitol is stored food in Rhodophyceae

D. Algin and carrageenan are products of algae.

Answer: C



Watch Video Solution

241. Which one is a wrong statement?

A. Archegonia are found in Bryophyta, Pteridophyta
and Gymnosperms

B. Mucor has biflagellate zoospores

C. Haploid endosperm is typical feature of gymnosperms

D. Brown algae have chlorophyll a and c, and fucoxanthin

Answer: B



Watch Video Solution

242. Male gametophyte in angiosperms produces:

A. two sperms and a vegetative cell

B. single sperm and a vegetative cell

C. single sperm and two vegetative cells

D. three sperms

Answer: A



Watch Video Solution

243. Select the correct statement

A. Salvinia, Ginkgo and Pinus all are gymnosperms

B. Sequoia is one of the tallest trees

C. The leaves of gymnosperms are not well adapted to extremes of climate

D. Gymnosperms are both homosporous and heterosporous

Answer: B



Watch Video Solution

244. In bryophytes and and pteridophytes, transport of male gametes requires

A. Insects

B. Birds

C. Water

D. Wind

Answer: C



Watch Video Solution

245. Conifers are adapted to tolerate extreme environmental conditions because of

- A. Broad hardy leaves
- B. Superficial stomata
- C. Thick cuticle
- D. Presence of vessels.

Answer: C



Watch Video Solution

246. Which one of the following statements is wrong.

- A. Algae increase the level of dissolved oxygen in the immediate environment.
- B. Algin is obtained from red algae, and carrageenin from brown algae.
- C. Agar-agar is obtained from *Gelidium* and *Gracilaria*
- D. *Laminaria* and *Sargassum* are used as food.

Answer: B



Watch Video Solution

247. Zygotic meiosis is characteristic of

A. *Marchantia*

B. Fucus

C. Funaria

D. Chlamydomonas

Answer: D



Watch Video Solution

248. An example of colonial alga is

A. Chlorella

B. Volvox

C. Ulothrix

D. Spirogyra

Answer: B



Watch Video Solution

249. Select the mismatch

- A. Pinus-Dioecious
- B. Cycas-Dioecious
- C. Salvinia -Heterosporous
- D. Equisetum-Homosporous

Answer: A



Watch Video Solution

250. Life cycle of Ectocarpus and Fucus respectively are

- A. haplontic, diplontic
- B. diplontic, haplodiplontic
- C. haplodiplontic, diplontic
- D. haplodiplontic, haplontic

Answer: C



Watch Video Solution

251. Which one is wrongly matched

- A. Unicellular organism -Chlorella

B. Gemma cups-Marchantia

C. Biflagellate Zoospores-Brown algae

D. Uniflagellate gametes-Polysiphonia

Answer: D



Watch Video Solution

252. Which of the following statements is correct?

A. Stems are usually unbranched in both *Cycas* and *Cedrus* .

B. Horsetails are gymnosperms.

C. Selaginella is heterosporous, while salvinia is homosporous.

D. Ovules are not enclosed by ovary wall in gymnosperms.

Answer: D



Watch Video Solution

Assertion And Reason

1. [A] : The mosses form dense growth .

[R] : They produce a large number of spores .

A. If both A and R are true and R is the correct explanation of A

B. If both A and R are true but R is not the correct explanation of A

C. If A is true and R is false

D. If both A and R are false

Answer:

 [Watch Video Solution](#)

2. [A] : Pteridophytes and Gymnosperms are included in Archegoniatae .

[R] : They have archegonia as female reproductive organ .

A. If both A and R are true and R is the correct explanation of A

B. If both A and R are true but R is not the correct explanation of A

C. If A is true and R is false

D. If both A and R are false

Answer:



[Watch Video Solution](#)

3. [A] : Pinus bears resin canals .

[R] : Resin canals are found in cortex and bounded by a glandular epithelial layer that secretes resin.

A. If both A and R are true and R is the correct explanation of A

B. If both A and R are true but R is not the correct explanation of A

C. If A is true and R is false

D. If both A and R are false

Answer:

 [Watch Video Solution](#)

4. [A] : In terms , prothallus is club shaped .

[R] : Prothallus is derived from club shaped zoosporangia

.

A. If both A and R are true and R is the correct explanation of A

B. If both A and R are true but R is not the correct explanation of A

C. If A is true and R is false

D. If both A and R are false

Answer:

 [Watch Video Solution](#)

5. [A] : Either megasporophylls or microsporophylls are found in Gymnosperms .

[R] : Both mega and microsporophylls are common in

Gymnosperms . Megasporophylls are smaller than microsporophylls .

A. If both A and R are true and R is the correct explanation of A

B. If both A and R are true but R is not the correct explanation of A

C. If A is true and R is false

D. If both A and R are false

Answer:



Watch Video Solution

6. [A] : Rhizophore is considered to be stem structure .

[R] : Rhizophore develops from angle meristem present between the two branches of stem .

A. If both A and R are true and R is the correct explanation of A

B. If both A and R are true but R is not the correct explanation of A

C. If A is true and R is false

D. If both A and R are false

Answer:



Watch Video Solution

7. [A] : Neottia and Monotropa are saprophytic angiosperms .

[R] : The association of a fungus with roots of higher plants is mycorrhiza.

A. If both A and R are true and R is the correct explanation of A

B. If both A and R are true but R is not the correct explanation of A

C. If A is true and R is false

D. If both A and R are false

Answer:



Watch Video Solution

8. [A] : Fossil plants serve as an index for paleoclimates .

[R] : Because plant adaptations to varied environmental conditions are well known .

A. If both A and R are true and R is the correct explanation of A

B. If both A and R are true but R is not the correct explanation of A

C. If A is true and R is false

D. If both A and R are false

Answer:



Watch Video Solution

9. [A] : Coralloid root of *Cycas* is confined to bacterial zone.

[R] : Nucleus is absent in young sieve cells .

A. If both A and R are true and R is the correct explanation of A

B. If both A and R are true but R is not the correct explanation of A

C. If A is true and R is false

D. If both A and R are false

Answer:





10. [A] : In Pinus only the dwarf roots become mycorrhizal

.

[R] : Seeds of Pinus are polycotyledonous .

A. If both A and R are true and R is the correct explanation of A

B. If both A and R are true but R is not the correct explanation of A

C. If A is true and R is false

D. If both A and R are false

Answer:

11. [A] : The mosses like liverworts , do not exhibit alternation of generation .

[R] : The adult gametophyte is conspicuous leafy green , photosynthetic plant in ferns .

A. If both A and R are true and R is the correct explanation of A

B. If both A and R are true but R is not the correct explanation of A

C. If A is true and R is false

D. If both A and R are false

Answer:



Watch Video Solution

12. [A] : Mosses do not seem to resist infestations by most fungi and are often seriously damaged by insects .

[R] : They do not possess antibiotic material .

A. If both A and R are true and R is the correct explanation of A

B. If both A and R are true but R is not the correct explanation of A

C. If A is true and R is false

D. If both A and R are false

Answer:



Watch Video Solution

13. [A] : Monotropa is a parasitic plant .

[R] : It does not show proper mycorrhizal association .

A. If both A and R are true and R is the correct explanation of A

B. If both A and R are true but R is not the correct explanation of A

C. If A is true and R is false

D. If both A and R are false

Answer:



Watch Video Solution

14. [A] : Some of the Sea kelps are used as fertilizers .

[R] : They are important source of minerals .

A. If both A and R are true and R is the correct explanation of A

B. If both A and R are true but R is not the correct explanation of A

C. If A is true and R is false

D. If both A and R are false

Answer:



Watch Video Solution

15. [A]: Angiosperms and gymnosperms both are flowering plants .

[R] : They both form covered seeds .

A. If both A and R are true and R is the correct explanation of A

B. If both A and R are true but R is not the correct explanation of A

C. If A is true and R is false

D. If both A and R are false

Answer:



Watch Video Solution