



# CHEMISTRY

## JEE (MAIN AND ADVANCED)

# CHEMISTRY

## CHEMISTRY IN EVERYDAY LIFE

### Level I Exercise

1. The treatment of diseases by using drugs is known as

A. physiotherapy

B. magneto therapy

C. chemotherapy

D. occupuncture

**Answer: C**



**Watch Video Solution**

**2. The classification of drugs in the following manner is most convenient for doctors**

A. Based on pharmacological effect

B. Based on drug action

C. Based on chemical structure

D. Based on molecular targets

**Answer: A**



**Watch Video Solution**

**3. Molecular mass of drugs usually is in the range of**

A.  $10 - 100\mu$

B.  $100 - 500\mu$

C.  $500 - 1000\mu$

D.  $1000 - 10000\mu$

**Answer: B**



**Watch Video Solution**

**4.** An ideal drug should not have the following quality

A. Be toxic

B. Be localised at invading gland.

C. Have to lerable side effects

D. Not injure host cells

**Answer: A**



**Watch Video Solution**

**5. The following can be a drug target**

A. Nucleic acid

B. Paracetmol

C. Omeprazole

D. Terfenadine

**Answer: A**



**Watch Video Solution**

**6.** The main bonding between enzyme and inhibitor is

A. Hydrogen bond

B. Ionic bond

C. van der Waals attractions

D. Strong covalent bond

**Answer: D**



**Watch Video Solution**

**7. The following is not an antacid**

A. Baking soda

B. Magnesite

C. Omeprazole

D. Terfenadine

**Answer: D**



**Watch Video Solution**

**8.** Secretion of HCl in the stomach is stimulated by

A. Histamine

B. Dopamine



C. Noradrenaline

D. Serotonine

**Answer: A**



**Watch Video Solution**

**9.** The following anti histamine does not act as antacid

A. Terfenadine

B. Lansoprazole

C. Cimitidine

D. Rantidine

**Answer: A**



**Watch Video Solution**

**10. Histamine causes**

A. Allergic response to pollen

B. Secreation of acid in stomach

C. Nasal congestion

D. All the above

**Answer: D**



**Watch Video Solution**

**11. Ranitidine is a**

A. Antihistamine

B. Antacid

C. Analgesic drug

D. Tranquiliser

**Answer: A::B**



**Watch Video Solution**

**12.** Luminal, a barbiturate drug is used as a /an

A. Antihistamine

B. Sedative

C. Antiseptic

D. Antimalarial

**Answer: B**



Watch Video Solution

**13.** For the relief of post operative pains, cardiac pains, suitable analgesic is \_\_\_\_\_

A. Codeine

B. Aspirin

C. Ibuprofen

D. Any non - addictive analgesics

**Answer: A**



**14.** Drug which helps to reduce anxiety

- A. Tranquiliser
- B. Diuretic
- C. Analgesic
- D. Antihistamine

**Answer: A**



Watch Video Solution

**15.** Which of the following is used for inducing sleep ?

A. Paracetamol

B. Chloroquine

C. Bithional

D. Barbituric acid derivatives

**Answer: D**



**Watch Video Solution**

**16.** Which of the following is the a tranquilizer?

A. Luminal

B. Seconal

C. Equanil

D. All the three

**Answer: D**



**Watch Video Solution**



**17.** Barbituric acid and its derivatives are well known as

A. Tranquillizers

B. Antiseptics

C. Antibiotics

D. Analgesics

**Answer: A**



**Watch Video Solution**

**18.** The substances which affect the central nervous system and induce sleep are called

A. antipyretics

B. tranquilizers

C. analgesics

D. antiseptic

**Answer: B**



**Watch Video Solution**

**19.** Which of the following is a neurotransmitter ?

A. Dopamine

B. Noradrenaline

C. Serotonine

D. All the above

**Answer: D**



**Watch Video Solution**

20. The enzyme which catalyses the degradation of noradrenaline can be inhibited by

A. Iproniazid

B. KBr

C. Ibuprofen

D. Barbituric acid

**Answer: A**



**Watch Video Solution**

**21.** The properties of LSD are similar to

A. Serotonine

B. Mescacine

C. Adrenaline

D. All

**Answer: D**



**View Text Solution**

**22.** The following can act as only sedative but not hypnotic

A. Thiopentone

B. KBr

C. Barbiturates

D. Barbituric acid

**Answer: B**



**Watch Video Solution**

23. The condensation product of malonyl dichloride and urea in presence of  $POCl_3$  is

A. Barbituric acid

B. Ibuprofen

C. Codine

D. Pencilline

**Answer: A**



**Watch Video Solution**

24. Barbiturates exert deppressant action on

----

A. Gut

B. Heart

C. Cerebrospinal axis

D. All the above

**Answer: C**



**Watch Video Solution**



25. An antipyretic drug on prolonged usage causes irreversible kidney damage. It is

A. Aspirin

B. Paracetmol

C. Phenacetin

D. Pencilline

**Answer: C**



**Watch Video Solution**

**26.** The following step is not involved in the preparation of phenacetin from p - nitrophenol.

A. Ethylation

B. Reduction

C. Acetylation

D. Hydrolysis

**Answer: A**



**Watch Video Solution**

27. The following steps are involved in the conversion of isobutyl benzene into ibuprofen.

A) Reduction B) acetylation C) Hydrolysis D)

Addition of HCN

The correct sequence is\_\_\_\_\_

A. B A C D

B. B D A C

C. A C B D

D. D C B A

**Answer: B**



[View Text Solution](#)

28. I) Aspirin is an acetyl derivative of o-hydroxy benzoic acid

II) In aspirin acetyl group is substituted in the place of phenolic hydrogen

A. only II is correct

B. I & II are correct

C. II is correct

D. both are false

**Answer: B**



**Watch Video Solution**

**29.** Identify the non-narcotic analgesic from the following

A. Diazepam

B. Ibuprofen

C. Formalin

D. Terpineol

**Answer: B**



**Watch Video Solution**

**30.** Which of the following can possibly be used as analgesic without causing addiction and any modification ?

A. Morphine

B. Diazepam

C. N- Acetyl para-aminophenol

D. Tetrahydrocatechol

**Answer: C**



**Watch Video Solution**

**31. 2-Acetoxy benzoic acid can be used as**

- A. Antiseptic
- B. Analgesic
- C. Antibiotic
- D. Mordant dye

**Answer: B**



**Watch Video Solution**

**32.** Substances which relieve body pains are termed as

A. antipyretics

B. antibiotics

C. analgesics

D. antimalarials

**Answer: C**





**33.** The drug given during hypertension is

A. Streptomycin

B. Chloroxylonol

C. Equanil

D. Aspirin

**Answer: C**



Watch Video Solution

**34.** Ibuprofen is a

A. non-narcotic drug

B. antibiotic drug

C. analgesic drug

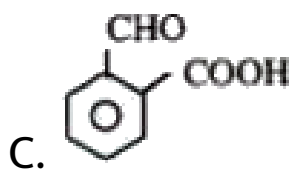
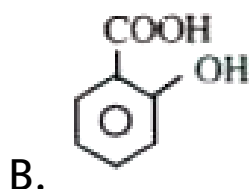
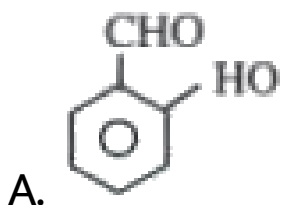
D. 1 and 3

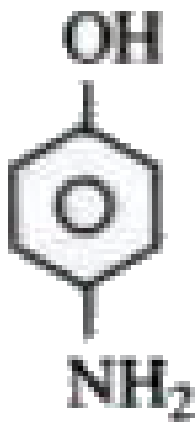
**Answer: D**



**Watch Video Solution**

35. Which one of the following compounds gives aspirin on reacting with acetic anhydride in the presence of conc  $H_2SO_4$ ?





D.

**Answer: B**



**Watch Video Solution**

**36.** Substances which bring down the body temperature during fever are known as

A. antibiotics

B. analgesics

C. antipyretics

D. antimalarial

**Answer: C**



**Watch Video Solution**

**37. Paracetamol is**

A. acetyl derivative of orthohydroxy

benzoic acid

B. acetyl derivative of p-amino phenol

C. acetyl derivative of benzoic acid

D. acetyl derivative of para hydroxy benzoic  
acid

**Answer: A**



**Watch Video Solution**

**38.** Functional groups in aspirin are

A. carboxylic acid

B. ester

C. alcohol

D. 1 and 2

**Answer: D**



**Watch Video Solution**

**39.** The drug used for prevention of heart attacks is

A. Aspirin

B. Valium

C. Chloramphenicol

D. Cephalsoprin

**Answer: A**



**Watch Video Solution**

**40.** Which of the following is a natural product  
?

A. Asparine



B. Ibuprofen

C. Morphine

D. Paracetmol

**Answer: C**



**Watch Video Solution**

**41.** Codeine can be obtained from morphine by treating with

A. Acetic anhydride

B. Glacial acetic acid

C. Phenyl trimethyl ammonium hydroxide

D.  $Sn + HCl$

**Answer: C**



**Watch Video Solution**

**42.** Which of the following is an addictive drug  
?

A. Papaverine

B. Pencilline

C. Sulphadiazine

D. Aspirin

**Answer: A**



**Watch Video Solution**

**43.** An example for coal tar analgesic

A. Acetanilide

B. Aniline

C. Analgin

D. Acetanilide + aniline

**Answer: D**



**Watch Video Solution**

**44.** The following Antipyretic is least toxic

A. aniline

B. o - amino phenol

C. p - amino phenol

D. m - amino phenol

**Answer: C**



**Watch Video Solution**

**45.** Tincture of iodine (2-3%  $I_2$  in water/alcohol) is

A. Antiseptic

B. Disinfectant

C. Analgesic

D. Antipyretic

**Answer: A**



**Watch Video Solution**

**46.** Sulpha drugs are derivatives of

A. Benzene sulphonic acid

B. Sulphanilic acid

C. Sulphanilamide

D. P- aminobenzoic acid

**Answer: C**



**Watch Video Solution**

**47.** The following drugs cannot be considered as anti microbials

A. Antiseptic

B. Antipyretic

C. Antibiotic

D. Disinfectant

**Answer: B**



**Watch Video Solution**

**48.** Biological specimens can be preserved in

A. Formalin

B. Dettol

C. Boric acid

D. Chlorine water

**Answer: A**





[Watch Video Solution](#)

**49.** Urinary infections can be cured by using

A. Chloramphenicol

B. Novestrol

C. Sulphadiazine

D. Dysidazirine

**Answer: A**



[Watch Video Solution](#)

**50.** A class of drugs useful to inhibit the pathogenic action of microbes are called.

A. Antimicrobials

B. Analgesic

C. Antipyretics

D. Tranquilizers

**Answer: A**



**Watch Video Solution**

51. The following antibiotic is Bacteriostatic.

- A. Erythromycin
- B. Amoxycillin
- C. Boric acid
- D. Tincture of Iodine

**Answer: A**



**Watch Video Solution**

**52.** The following is disinfectant under high concentration but antiseptic under low concentration.

A. Phenol

B. BHT

C. BHA

D. Novestrol

**Answer: A**



**Watch Video Solution**

53. Molecular formula of penicillin is

$C_9H_{11}O_4N_2SR$ . The incorrect matching is.\_

A. R = Benzyl penicillin ----- penicillin G

B. R =  $CH_2 - C_6H_4 - OH$  ----- penicillin X

C. R = pent - 2 - enyl ----- amyl penicillin

D. R =  $(CH_2)_6 - CH_2$ ----- n - heptyl  
penicillin

**Answer: C**



**View Text Solution**

**54. Which one is a broad spectrum antibiotic ?**

A. Chloramphenicol

B. Penicillin

C. Phenol

D. Formalin

**Answer: A**



**Watch Video Solution**

55. 0.2 percent solution of phenol is a/an

- A. antiseptic
- B. disinfectant
- C. antibiotic
- D. antifertility drug

**Answer: A**



**Watch Video Solution**

**56.** Which of the following is not an antiseptic drug?

A. furacine

B. dettol

C. gammexane

D. soframycine

**Answer: C**



**Watch Video Solution**



57. Antiseptic applied on the tissue is

A. Soframycine

B. Novestrol

C. Sulphanilamide

D. Pencillin

**Answer: A**



**Watch Video Solution**

58. Very low concentrations of  $SO_2$  acts as

A. Antifertility drug

B. Artificial sweetening agent

C. Disinfectant DTU

D. Antiseptic

**Answer: C**



**Watch Video Solution**

**59.** Amoxycillin is semi synthetic modification  
of

A. Penicillin

B. Streptomycin

C. Tetracycline

D. Chloramphenicol

**Answer: A**



**Watch Video Solution**

**60.** Arsenic drugs are mainly used in the treatment of

A. Jaundice

B. Typhoid

C. Syphilis

D. Cholera

**Answer: C**



**Watch Video Solution**

**61.** Salvarsan is having similarity in structure as that of

A. azodye

B. penicillin

C. ofloxacin

D. chloramphenicol

**Answer: A**



**Watch Video Solution**

**62.** The anti oxidants for wine are

A.  $SO_2$  &  $SO_3^{-2}$

B. *BHT* & *BHA*

C. Citric acid

D. Tetrazine

**Answer: A**



**Watch Video Solution**

**63.** Metabolism of  $C_6H_5COONa$  finally excreted as

A. Benzene

B. Hippuric acid

C. BHT

D. BHA

**Answer: B**



**Watch Video Solution**

**64.** The following substance is more reactive towards oxygen than food material

A. Antioxidant

B. Food colour

C. Food sweetner

D. Food nutrients

**Answer: A**



**Watch Video Solution**

**65.** Control of sweetness of food is difficult with

A. Asparatame



B. Sucrolose

C. Fructose

D. Alitame

**Answer: D**



**Watch Video Solution**

**66.** Sucrolose structure is similar to

A. Saccharin

B. Sucrose

C. Fructose

D. Glucose

**Answer: B**



**Watch Video Solution**

**67.** More number of peptide bonds are present  
in

A. alitame

B. aspartame

C. saccharin

D. sucralose

**Answer: B**



**Watch Video Solution**

**68.** More sweeteners among the following

A. Aspartame

B. Saccharin

C. Sucralose

D. Alitame

**Answer: D**



**Watch Video Solution**

**69.** Which of the following artificial sweetener is a chloroderivative of disaccharide ?

A. Alitame

B. Aspartame

C. Sucralose

D. Saccharine

**Answer: C**



**Watch Video Solution**

**70.** The artificial sweetner aspartame is the methyl ester of the dipeptide

A. Glycylalanine

B. Aspartyl phenyl alanine

C. Phenyl alanyl aspartic acid

## D. Alanyl glycine

**Answer: B**



**Watch Video Solution**

**71.** The trivial names are given in list - I and their chemical names are given in list - II.

**Match the following**

**List - I**

- A) aspirin
- B) ibuprofen
- C) paracetamol
- D) penicillin-III

**List - II**

- 1)  $\alpha$ -methyl-4-(2-methyl propyl) benzene acetic acid
- 2) p-hydroxy benzyl penicillin
- 3) N-(4-hydroxyphenyl) acetamide
- 4) acetyl salicylic acid
- 5) orthosulphobenzimide

The correct match is

	A	B	C	D
1)	4	1	5	2
3)	4	1	3	2

	A	B	C	D
2)	3	2	4	1
4)	1	2	4	3

72. List I contains common names and list-II contains chemical names.

**List - I**

- A) penicillin F
- B) penicillin G
- C) penicillin X
- D) phenacetin

**List - II**

- 1) N-(4-hydroxyphenyl) acetamide
- 2) benzyl penicillin
- 3) *n*-heptyl penicillin
- 4) pent-2-entyl penicillin
- 5) *p* - hydroxy benzyl penicillin

The correct match is

	A	B	C	D
1)	4	2	1	5
3)	2	1	5	3

	A	B	C	D
2)	4	2	5	1
4)	3	5	2	1



Watch Video Solution

73. Penicillin is the name given to a group of natural compounds, with a formula




**List - I**

A) R = -CH<sub>2</sub>-O-C<sub>6</sub>H<sub>5</sub>

B) R = -(CH<sub>2</sub>)<sub>6</sub>-CH<sub>3</sub>

C) R = -CH<sub>2</sub>-C<sub>6</sub>H<sub>5</sub>

D) R = -CH--OH

**List - II**

1) n-aryl penicillin

2) benzyl penicillin

3) n-heptyl penicillin

4) p - hydroxy benzyl penicillin

5) phenoxymethyl penicillin

The correct match is

	A	B	C	D
1)	5	3	2	4
3)	1	3	4	5

	A	B	C	D
2)	2	5	1	3
4)	5	1	3	4



**Watch Video Solution**

**74.** The antiseptic used in good quality soaps is

A. Lysol

B. Bithional



C. Boric acid

D. Salol

**Answer: B**



**Watch Video Solution**

**75.** List-I contains the names of compounds and list-II contains their functions.

# Match the following

## List - I

- A) heroin
- B) aspirin
- C) analgin
- D) barbituric acid

## List - II

- 1) used as artificial sweetener
- 2) used as analgesic and antipyretic
- 3) to suppress headache, discomfort and fever due to cold
- 4) induces sleep in presence of pain
- 5) used to prepare sedatives and hypnotics

The correct match is

	A	B	C	D		A	B	C	D
1)	4	3	1	2	2)	1	2	4	3
3)	4	3	2	5	4)	2	1	5	4



**Watch Video Solution**

**76.** Histidine can be converted into histamine by

A. Decarboxylation of histidine

B. Dehydration of histidine

C. Decarboxylation of histamine

D. Dehydrohalogenation of histamine

**Answer: A**



**Watch Video Solution**

**77.** Naturally occurring  $\alpha$ aminoacid, histidine is\_\_\_\_\_in nature

A. Acidic

B. Basic

C. Amphoteric

D. Neutral

**Answer: B**



**Watch Video Solution**

**78.** In shaving soaps rapid drying is prevented by adding

A. Rosin

B. Glycerol

C. Borax

D. Finely divided sand

**Answer: B**



**Watch Video Solution**

**79.** Liquid dishwashing detergents contain

A. non-ionic detergents

B. cationic detergents

C. anionic detergents

D. sodium carbonate

**Answer: A**



**Watch Video Solution**

**80.** Structurally biodegradable detergent should contain

A. Unbranched alkyl chain

B. Branched alkyl chain

C. Phenyl side chain

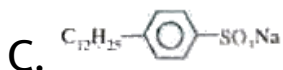
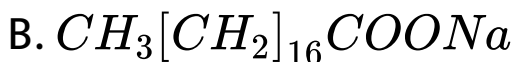
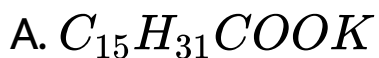
D. Cyclohexyl side chain

**Answer: A**



**Watch Video Solution**

**81.** Which of the following represents a synthetic detergent ?



D. None of these

**Answer: C**



**Watch Video Solution**

## Level II Lecture Sheet Exercise I

1. Which of the following is not a bacterio static antibiotic ?

A. Erythromycin



B. Tetracycline

C. Chloramphenicol

D. Penicillin

**Answer: D**



**Watch Video Solution**

2. Streptomycin, a well known antibiotic, is a derivative of

A. Peptides

B. Carbohydrates

C. Purines

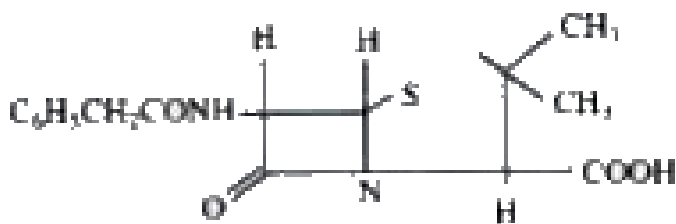
D. Terpenes

**Answer: B**



**Watch Video Solution**

**3.** The structure given below is known as



A. Pennicillin F

B. Penicillin G

C. Penicillin K

D. Ampicillin

**Answer: B**



**View Text Solution**

4. A substance produced by the micro organism which can inhibit the growth of other micro organism is called

A. Antiseptic

B. Antibiotic

C. Antimicrobial

D. Disinfectant

**Answer: B**



**View Text Solution**

**5. Microbes can be killed by using**

A. Penicillin

B. Tetracycline

C. Chloramphenicol

D. Vancomycin

**Answer: A::D**



**Watch Video Solution**

**6.** The drug that is effective in the treatment of typhoid is

A. novalgin

B. quinine

C. chloramphenicol

D. paracetamol

**Answer: C**



**Watch Video Solution**

**7. A broad spectrum antibiotic is**

A. Paracetamol

B. Penicillin-G

C. Aspirin

D. Chloramphenicol

**Answer: D**



**Watch Video Solution**

**8.** Barbituric acid is a condensation product of

A and B. A, B are :

A. 1.  $H_2NCONH_2$ ,  $HO_2C - CO_2H$

B. 2.  $H_2NCONH_2$ ,  $ClCOCH_3$

C. 3.  $H_2N - NH_2, ClCOCH_2COCl$

D. 4.  $H_2NCONH_2, ClOCCH_2COCl$

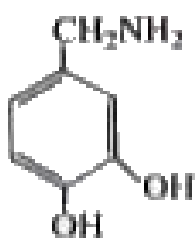
**Answer: D**



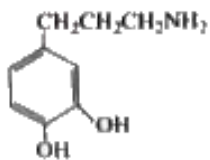
**Watch Video Solution**

**9.** Parkinson's disease is linked to abnormalities in the levels of dopamine in the body. The structure of dopamine is

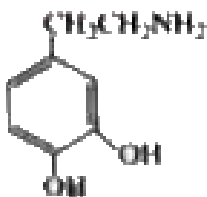




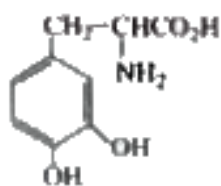
A.



B.



C.



D.

**Answer: C**



**Watch Video Solution**

**10.** The incorrect statement in the following is

A. To accomodate messenger, shape of the receptor site changes

B. The chemical messenger gives message to the cell by entering into the cell

C. Antagonists inhibit the natural function of receptor

D. The drugs that imitate the natural messengers are called agonists

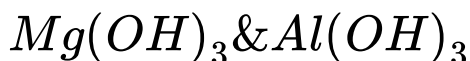
**Answer: B**



**Watch Video Solution**

11.  $Mg(OH)_2 + Al(OH)_3$  Mixture is better antacid than  $NaHCO_3$  because

A.  $NaHCO_3$  Solubility in water is less than



B.  $Al(OH)_3$  and  $Mg(OH)_2$  are insoluble

in water, these do not raise  $P^H$  beyond

7

C. Less acid will be produced due to

excessive  $\text{HCO}_3^-$

D.  $\text{NaHCO}_3$  is stomach irritant

**Answer: A::D**



**Watch Video Solution**

**12.** Detergents are prepared by the action of  $\text{H}_2\text{SO}_4$  followed by neutralization by starting with

- A. Cholesterol
- B. Lauryl alcohol
- C. Cyclohexanol
- D. p-Nitrophenol

**Answer: B**



**Watch Video Solution**

**13.** The group commonly present in synthetic detergents is

A. Rna

B. RNa

C. RCOONa

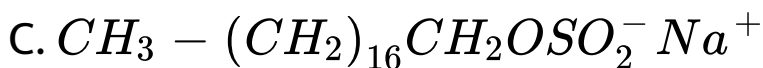
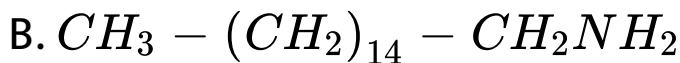
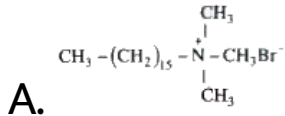
D.  $RC_6H_4SO_3Na$

**Answer: D**

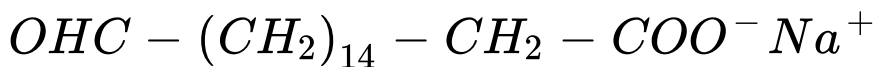


**Watch Video Solution**

**14.** Which one of the following is not a surfactant ?



D.

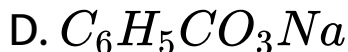
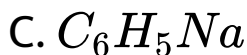
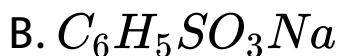
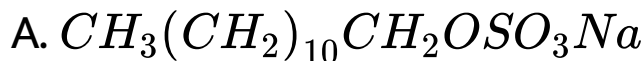


**Answer: B**



**Watch Video Solution**

15. Which of the following is an anionic detergent ?



**Answer: A**



**Watch Video Solution**



**16.** Transparent soaps made by dissolving soap in

A. rosin

B. sodium carbonate

C. trisodium phosphate

D. ethanol

**Answer: D**



**Watch Video Solution**

17. Anionic detergent is a

- A. sodium lauryl sulphate
- B. cetyltrimethyl ammonium bromide
- C. glyceryl palmitate
- D. glyceryl Oleate

**Answer: A**



**Watch Video Solution**

**18. Anti allergy drugs are**

- A. Antimicrobials
- B. Antihistamines
- C. Antivirals
- D. Antifungals

**Answer: B**



**Watch Video Solution**

**19.** The following antihistamine, can acts as anti allergic

A. Brompheniramine

B. Cimitidine

C. Rantidine

D. Paracetmol

**Answer: A**



**Watch Video Solution**

**20.** Which of the following is a acetyl derivative of morphine ?

A. Heroin

B. Codeine

C. Phenacetine

D. Analgin

**Answer: A**



**View Text Solution**

**21.** The addictive property of narcotic drugs is mainly due to their ability to produce

- A. Euphoria
- B. Blood clotting
- C. Mental disorder
- D. Hyper acidity

**Answer: A**



**View Text Solution**

22. Aspirin is acetyl salicylic acid, the pair of functional groups present in the compound is

- A. Hydroxyl, ester
- B. Carboxylic acid, hydroxyl
- C. Carboxylic acid, keto
- D. Carboxylic acid, ester

**Answer: D**



**Watch Video Solution**

23. Which of the following does not provide any calories and stable even at cooking temperature ?

A. Surcose

B. Sucralose

C. Aspartame

D. Sodium benzoate

**Answer: B**



**View Text Solution**



## Level II Lecture Sheet Exercise II More Than One Correct Answer Questions

1. Drugs possessing same structural features will have

A. Same mechanism of action

B. Similar physiological and psychological effect

C. Similar pharmacological effect

D. Same expiry date.

**Answer: A::B::C**



**Watch Video Solution**

2. The substrate will be binded to the active site of the enzyme through

- A. Ionic binding
- B. Hydrogen bonding
- C. van der Waals interactions
- D. Dipole-dipole interactions

**Answer: A::B::C::D**



**View Text Solution**

**3. Enzyme inhibitors may attack on**

A. Active site of enzyme

B. Allosteric site of enzyme

C. Tongue

D. Stomach walls

**Answer: A::B**



Watch Video Solution

4. The chemical messengers transport message between

A. Neuron to neuron

B. Neuron to to muscles

C. Enzyme to receptor are

D. Enzyme to enzyme

**Answer: A::B::C**



 [View Text Solution](#)

5. Chemically Herion is

- A. Morphinediacetate
- B. Morphine dibenzoate
- C. Norcotic drug
- D. Morphinemonobenzoate

**Answer: A::B**



[View Text Solution](#)

6. The following opiate can be used as analgesic

A. Codeine

B. Phenacetine

C. Asparine

D. Heroin

**Answer: A::D**



**View Text Solution**

7. Morphine is used as an

A. Antipyretic

B. antiseptic

C. Analgesic

D. Pain Killer

**Answer: C::D**



**View Text Solution**

8. Which of the following is used as a local anaesthetic agent ?

A. Cocaine

B. Ethyl chloride

C. Mescaline

D. Seconal

**Answer: A::B**



**View Text Solution**



9. Dettol is a mixture of

A. chloroxylenol and terpineol

B. Used as Antiseptic

C. Insecticide

D. Boric acid and bithional

**Answer: A::B**



**View Text Solution**

10. Which of the following statements is not true?

- A. Some disinfectants can be used as antiseptics at low concentration
- B. Sulphadiazine is a synthetic antibacterial
- C. Ampicillin is semi synthetic antibiotic
- D. Aspirin is only analgesic

**Answer: D**



**Watch Video Solution**

**11.** Aqueous ethanolic solution of 2-3% Iodine is

- A. Antiseptic
- B. Tincture of iodine
- C. Antihistamine
- D. Antifertility drug

**Answer: B**



**Watch Video Solution**

12. Phenol is used as

A. an antiseptic

B. a disinfectant

C. Antipyretic

D. a styptic

**Answer: A::B**



**Watch Video Solution**

**13.** Which of the following is used as an anti septic

A. Phenol

B. Chloroform

C. Benzalamine

D. Malic anhydride

**Answer: A::B**



**Watch Video Solution**

**14.** Norethindrone is an example of

- A. synthetic testosterone
- B. synthetic progesterone derivative
- C. preservative
- D. Birth controlling agent

**Answer: B::D**



**View Text Solution**

**15.** Birth control pills essentially contains

- A. synthetic estrogen
- B. synthetic progesterone
- C. Testosteron
- D. prontosil

**Answer: A::B**



**View Text Solution**

**16.** Which of the following drugs is a tranquilizer and sedative?

A. Sulphadiazine

B. Papaverine

C. Equanil

D. Veronal

**Answer: C::D**



**View Text Solution**

**17.** Some statements are given below



A. Chlordiazepoxide and meprobamate are relatively mild tranquilizers suitable for relieving tension

B. Equanil is used in controlling depression and Hypertension

C. If the level of Noradrenaline is low then the person suffers from depression

D. Iproniazid contains heterocyclic ring where as phenelzine contains

homocyclic ring Correct statements are

**Answer: A::B::C::D**



**Watch Video Solution**

**18. Which is true for a detergent molecule?**

- A. It has a non-polar organic part and a polar group
- B. It is not easily biodegraded
- C. It is sodium salt of a fatty acid
- D. It is a surface active reagent

**Answer: A::B::D**



**Watch Video Solution**

**19.** The correct statement in the following is

- A. floating soaps are obtained by beating tiny air bubbles before their hardening
- B. laundry soaps contain sodium resonate
- C. colours and perfumes are added to the toilet soaps to make attractive

D. synthetic detergents are cleaning agents  
but not having properties of soap

**Answer: A::B::C**



**Watch Video Solution**

**20.** Which of the following is not an antihistamine ?

A. Chloropheniramine

B. Dimetap

C. Seconal

D. Equanil

**Answer: C::D**



**View Text Solution**

**21. Which of the following is an artificial sweetner ?**

A. Sucralose

B. Alitame

C. Saccharin

D. Sucrose

**Answer: A::B::C**



**View Text Solution**

**Level Ii Lecture Sheet Exercise Iii Match The  
Following Questions**

## 1. Match the following questions

### List - I

- A) Antipyretic
- B) Laxative
- C) Hypnotic
- D) Both analgesic & Antipyretic

The correct match is

---

### List - II

- I) Epsom salt
- II) Chlorotone
- III) Paracetamol
- IV) Aspirin



**Watch Video Solution**

## 2. Match the following questions

### List - I

- A) Iodoform
- B) Dil.aq.Boric acid
- C) Penicillin-G
- D) Chloramphenicol

### List - II

- I) Narrow spectrum antibiotic
- II) Weak antiseptic for eyes
- III) Antiseptic for wounds
- IV) Broad spectrum antibiotic

.....



**Watch Video Solution**

### 3. Match the following questions

#### List - I

- A) Iodoform
- B) Methyl salicylate
- C) Diethyl ether
- D) Hexachlorocyclohexane

#### List - II

- I) Anaesthetic
- II) Antiseptic
- III) Insecticide
- IV) Detergent
- V) Pain balm



**Watch Video Solution**

## Level II Lecture Sheet Exercise IV Integer Answer Type Questions

1. No. of  $\pi$  bond present in Norethindrone



**Watch Video Solution**



2. No. of chlorine atoms in Bithonol



**Watch Video Solution**

3. No. of acidic hydrogen in Barbuteric acid



**Watch Video Solution**

4. No. of  $\pi$  bonds present in Aspirine



**Watch Video Solution**

5. No. of 'N' atoms present in Novalgin



**Watch Video Solution**

## Practice Sheet 1 Single Answer Questions

1. A medicine which promotes the secretion of urine is called

A. ureic

B. mono ureic

C. diuretic

D. triuretic

**Answer: C**



**View Text Solution**

2. One of the most widely used drug in medicine index is

A. Methyl Salicylate

B. Ethyl Salicylate

C. Acetyl Salicylic acid

D. O-Hydroxyl benzoic acid

**Answer: A**



**Watch Video Solution**

**3. The drug used as an antidepressant is**

A. Luminal

B. tofranil

C. Mescaline

D. Sulphadiazine

**Answer: B**



**Watch Video Solution**

**4. Which of the following is molecular disease**

A. Cancer

B. sugar

C. B.P

D. Allergy

**Answer: A**



**Watch Video Solution**

5. Deficiency of insulin given rise to excessive amount of glucose in the blood and urine and causes

A. diabetics

B. B.P

C. heart problem

D. All

**Answer: A**



**Watch Video Solution**

**6.** The phenolic derivative used in mouth wash is

- A. n- hexyl resorcinol
- B. penta chloro phenol
- C. hexachloro phenol
- D. Thymol

**Answer: A**



**Watch Video Solution**

**7. The odour constituent of apples is**

A. propanol

B. Acetaldehyde

C. pentanone

D. 2 hexanol

**Answer: A**





**Watch Video Solution**

## Practice Sheet 1 One Or More Answer Questions

1. Which of the following is used as an antioxidant in food

A. BTX

B. BHT

C. BHA

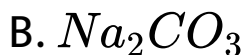
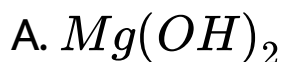
D. All of these

**Answer: B::C**



**View Text Solution**

2. Which of the following is used as an antacid?



D. Aluminium phosphate

**Answer: A::C::D**



**Watch Video Solution**

**3. Which of the following are antibiotics?**

A. Tetracycline

B. Neomycin

C. Carbo mycine

D. Cyclohexane

**Answer: A::B::C**



[Watch Video Solution](#)

4. Which of the following is an alkaloid

A. Nicotine

B. Piperine

C. Codeine

D. Anthracine

**Answer: A::B::C**



[Watch Video Solution](#)

5. Measles is a disease which belongs to the category is?

- A. Viral disease
- B. bacterial disease
- C. Veneral disese
- D. Protozoan disease

**Answer: A**



**View Text Solution**

6. Which of the following is a chlorinated insecticide?

A. DDT

B. Methoxy chloro

C. Pavathion

D. B.H.C

**Answer: A::B::C**



**Watch Video Solution**

7. Oral contraceptive drugs contain

A. Mestanol

B. Norethin drone

C. Equinal

D. Barbutyric acid

**Answer: B**



**View Text Solution**

8. Which of the following is a germicide also?

- A. Cationic detergent
- B. Anionic detergent
- C. Non-ionic detergent
- D. None of these

**Answer: A**



**View Text Solution**

**Practice Sheet 1 Linked Comprehension Type  
Questions Passage I**



1. The opiates are drugs that cause addiction. Heroin and cocaine are among the most famous examples. The chemistry of the brain adapts to the presence of the opiate in such a way that the person taking the drug feels an uncontrollable need to take more of it. Owing to their ability to induce an artificial feeling of well-being, the person taking heroin (or) cocaine quickly becomes addicted to them. Once this happens, the craving for the drug often causes the person.

(i) Neglect ordinary rules of hygiene

(ii) Enter into a life of crime

As a result of drug addict becomes thin and susceptible illness.

Heroin is a derivative of

A. morphine

B. nicotine

C. benzene

D. cocaine

**Answer: A**



**Watch Video Solution**

2. The opiates are drugs that cause addition  
Heroin and cocaine are among the most famous example. The chemistry of the brain adapts to the presence of the opiate in such a way that the person taking the drug feels an uncontrollable need to take more of it. Owing to their ability to induce an artificial feeling of well being, the person taking heroin (or) cocaine quickly becomes addicted to them once this happens the craving for the drug often causes the person.

(i) Neglect ordinary rules of hygiene

(ii) Enter into a life of crime

As a result of drug addict becomes thin and susceptible illness.

Cocaine is

A. Vitamin

B. Hormone

C. Medicine

D. Anti pyritic

**Answer: C**



3. The opiates are drugs that cause addition Heroin and cocaine are among the most famous example. The chemistry of the brain adapts to the presence of the opiate in such a way that the person taking the drug feels an uncontrollable need to take more of it. Owing to their ability to induce an artificial feeling of well being, the person taking heroin (or) cocaine quickly becomes addicted to them once this happens the craving for the drug

often causes the person.

(i) Neglect ordinary rules of hygiene

(ii) Enter into a life of crime

As a result of drug addict becomes thin and susceptible illness.

Morphine on Alkylation and acetylation gives respectively

A. Codeine, heroine

B. Heroin, codeine

C. Heroin, meperidine

D. Meperidine, heroin

**Answer: A**



**Watch Video Solution**

#### 4. Match the following questions

**List - I**

- A) Analgesic
- B) Anti histamine
- C) A sweetening agent
- D) Birth Controlling agent
- E) Preservative

- a) I – B      II – E      III – C      IV – D
- c) I – B      II – E      III – A      IV – C

**List - II**

- I) Ranitidine
- II) Sodium benzoate
- III) Asiprine
- IV) Alitame

- b) I – D      II – B      III – A      IV – C
- d) I – C      II – A      III – D      IV – B



**Watch Video Solution**

**Practice Sheet 1 Linked Comprehension Type  
Questions Passage II**

1. Tranquilizers are medicines or the chemical substances used for the treatment of stress and mild to severe mental diseases. They induce a sense of fitness and relieve stress anxiety and fatigue tranquilizers are also called psychotherapeutic drugs. They acts on central nervous system. They include hypnotics and sedatives

Which of the following is a hypnotic drug

A. Luminal

B. Saconal



C. A & B

D. Butyric acid

**Answer: C**



**Watch Video Solution**

2. Tranquilizers are medicines or the chemical substances used for the treatment of stress and mild to severe mental diseases. They induce a sense of fitness and relieve stress anxiety and fatigue tranquilizers are also

called psychotherapeutic drugs. They acts on central nervous system. They include hypnotics and sedatives

Which of the following is a hallucinogenic drug?

A. LSD

B. Methedrine

C. Calmpose

D. Seconal

**Answer: A**



3. Tranquilizers are medicines or the chemical substances used for the treatment of stress and mild to severe mental diseases. They induce a sense of fitness and relieve stress anxiety and fatigue tranquilizers are also called psychotherapeutic drugs. They acts on central nervous system. They include hypnotics and sedatives

Veronal a barbiturate drug is used as

A. an aesthetic

B. sedative

C. anti septic

D. none of these

**Answer: B**



**Watch Video Solution**

**Practice Sheet 1 Match The Following Questions**

# 1. Match the following questions

## List - I

- A) Anaesthetic
- B) Antiseptic
- C) Insecticide
- D) Detergent
- E) Pain balm

- a) I - B    II - E    III - C    IV - D
- c) I - B    II - E    III - A    IV - C

## List - II

- I) Iodo form
- II) Methyl Salicylate
- III) Diethyl ether
- IV) Hexachloro cyclohexane

- b) I - D    II - B    III - A    IV - C
- d) I - C    II - A    III - D    IV - B



Watch Video Solution

## Practice Sheet 1 Integer Answer Type Question

1. Morphine , Methadone , Aspirin , Heroin , Codeine among them how many drugs are pain killer.



Watch Video Solution

2. Number of Methyl groups in Ibu profen



Watch Video Solution

3. 1% solution of phenol 40% aqueous solution or methanal,  $SO_2$  solution  $Cl_2$  solution  $H_2O_2$  solution among them how many chemicals are disinfections.



Watch Video Solution

4. Sodium benzoate, sodium propionate  
calcium propionate, sodium metabisulphite,  
sodium thiosulphate Among them how many  
chemicals are not food preservatives



**Watch Video Solution**

5. Number of chlorine atoms in sucrose



**Watch Video Solution**

6. Number of chlorine atoms in D.D.T



**Watch Video Solution**

7. Number of acidic hydrogen in Aspirin



**Watch Video Solution**

**Practice Sheet 2 Practice Sheet 2 Single Answer Questions**



1. Hydrazine as a drug is also used in the treatment of

A. Tuberculosis

B. Cholera

C. Typhoid

D. Malaria

**Answer: A**



**Watch Video Solution**

2. The insecticide containing 99% of  $\gamma$  isomer of Benzene hexachloride is known as

A. PDT

B. TNT

C. lindane

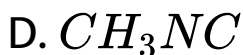
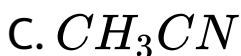
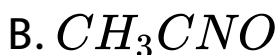
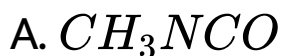
D. Methoxychlor

**Answer: C**



**Watch Video Solution**

3. The poisonous gas evolved in Bhopal tragedy from the pesticide plant of union carbide was



**Answer: A**



**Watch Video Solution**

4. Arsenic drugs are mainly used in the treatment of

A. Syphilis

B. Jaundice

C. Typhoid

D. Cholera

**Answer: A**



**Watch Video Solution**

5. Which of the following is considered to be an anti cancer species.

A. cis-ptatin

B. trans platin

C.  $[ptCl_4]$

D.  $[pt(NH_3)_4]$

**Answer: A**



**Watch Video Solution**

**6. Which one is communicable disease?**

A. T.B

B. Cholera

C. A & B

D. sugar

**Answer: C**



**Watch Video Solution**

7. The chemical extracted from the plant *Rauwalfia serpentina* is

A. reserphine

B. quinine

C. aspirin

D. paracetmal

**Answer: A**



**Watch Video Solution**

## Practice Sheet 2 Practice Sheet 2 One Or More Than One Answer Questions

1. The drug which is used to check viral inflammation in AIDS is

A. Aspirin

B. Equanil

C. Oil of wintergreen

D. LSD

**Answer: A::B::C**







Watch Video Solution

2. The antiseptic present in dettol is

A. Chloroxylonol

B. Bithional

C. Terpinol

D.  $H_2O_2$

**Answer: A::C**



Watch Video Solution

3. The preservative which is ultimately excreted in urine as hippuric acid is

- A. Sodium acetate
- B. Sodium benzoate
- C. Sodium sorbate
- D. Sodium propionate

**Answer: B**



**Watch Video Solution**

4. Nutra sugar is

A. Aspartame

B. Alitame

C. Sucralose

D. Dulcine

**Answer: A**



**Watch Video Solution**

5. Which of the following is/are a surfactant?

A. Detergents

B. Soaps

C. Syndect

D. Sodium propionate

**Answer: A::B::C**



**Watch Video Solution**

**6.** The preservative which is used to preserve bread and cakes is

A. Sodium propionate

B. Sodium sorbate

C. Sodium benzoate

D. Sodium acetate

**Answer: A**



**Watch Video Solution**

7. Which of the following is an artificial edible colour?

A. Tetrazine

B. Saffron

C. Carotene

D. Melamine

**Answer: A**



**Watch Video Solution**

**8. Placebo is often given to patients it is**

A. A sugar pill

B. Anti septic

C. Anti pyretic

D. Disinfectant

**Answer: A**

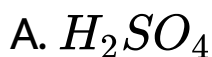


**Watch Video Solution**

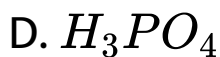
**Practice Sheet 2 Practice Sheet 2 Linked  
Comprehension Type Questions Passage I**

1. Walls of stomach secrete acids to make the stomach acidic and for the digestion of food, when the acid is secreted in excess it leads to indigestion, heart burn, (or) gastric ulcers. The chemicals which are used to neutralize the excess acid present in the gastric juice and to raise the pH of stomach upto an appropriate level are called antacids.

The acid secreted in stomach?







**Answer: B**



**Watch Video Solution**

2. Walls of stomach secrete acids to make the stomach acidic and for the digestion of food, when the acid is secreted in excess it leads to indigestion, heart burn, (or) gastric ulcers. The chemicals which are used to neutralize the

excess acid present in the gastric juice and to raise the pH of stomach upto an appropriate level are called antacids.

Antacids does not contains

A. NaOH

B.  $Mg(OH)_2$

C.  $Al(OH)_3$

D.  $NaHCO_3$

**Answer: A**



**Watch Video Solution**

**3.** Walls of stomach secrete acids to make the stomach acidic and for the digestion of food, when the acid is secreted in excess it leads to indigestion, heart burn, (or) gastric ulcers. The chemicals which are used to neutralize the excess acid present in the gastric juice and to raise the pH of stomach upto an appropriate level are called antacids.

Which acts as natural antacid ?

A. Milk

B. Butter

C. Honey

D. Curd

**Answer: A**



**Watch Video Solution**

**Practice Sheet 2 Practice Sheet 2 Linked  
Comprehension Type Questions Passage li**

1. Antibiotics are the chemicals secreted by the micro organisms which either inhibits the growth (or) destroy the pathogenic bacteria.

Previously chloramycetin used to be a product of fermentation but at present synthetic method has replaced it

Streptomycin is effective in the treatment of

A. Malaria

B. Tuberculosis

C. Typhoid

## D. Cholera

**Answer: B**



**Watch Video Solution**

2. Antibiotics are the chemicals secreted by the micro organisms which either inhibits the growth (or) destroy the pathogenic bacteria. Previously chloramycetin used to be a product of fermentation but at present synthetic method has replaced it

A drug effective in the treatment of pneumonia, bronchitis etc is

A. Penicillin

B. Chloramphenicol

C. Streptomycin

D. Sulphasyanidine

**Answer: A**



**Watch Video Solution**

3. Antibiotics are the chemicals secreted by the micro organisms which either inhibits the growth (or) destroy the pathogenic bacteria. Previously chloramycetin used to be a product of fermentation but at present synthetic method has replaced it

The first viral disease detected in human being?

A. Yellow fever

B. Cold

C. Small fox



## D. Malaria

**Answer: A**



**Watch Video Solution**

## Practice Sheet 2 Practice Sheet 2 Match The Following Questions

### 1. Match the following questions

#### List - I

- A) B.H.A
- B) B.H.C
- C) LSD
- D) B.H.T

- |          |        |         |
|----------|--------|---------|
| a) I - A | II - D | III - B |
| b) I - D | II - B | III - A |
| c) I - B | II - D | III - A |
| d) I - C | II - A | III - D |

#### List - II

- I) Butylated hydroxyl anisole
- II) Butylated hydroxyl toluene
- III) Benzene hexa chlorine
- IV) Lysergic acid diethyl amide

- |        |
|--------|
| IV - C |
| IV - C |
| IV - C |
| IV - B |



**Watch Video Solution**

## 2. Match the following questions

### List - I

#### Name of plant

- A) Coca
- B) Opium
- C) Cinchona
- D) Lupins

- a) I – A      II – D
- b) I – D      II – B
- c) I – B      II – D
- d) I – C      II – A

### List - II

#### Drug

- I) Cocaine
- II) Lupinine
- III) Morphine
- IV) Quinine

- IV – C
- IV – C
- IV – C
- IV – B



**Watch Video Solution**

**Practice Sheet 2 Practice Sheet 2 Integer Answer  
Type Questions**

1. One mole Benzene in presence of light on reaction with 'x' moles of  $Cl_2$  forms B.H.C. what is 'x' ?



**Watch Video Solution**

2. How many functional groups are present in Norethindrone.



**Watch Video Solution**

3. Number of Amino acids present in Aspartame ?



Watch Video Solution

4. Number of Nitrogen atoms in histidine ?



Watch Video Solution

5.  $Mg(OH)_2$ ,  $Al(OH)_3$ , omeprazole,  
Lansoprazole , sodium benzoate , sodium

propionate among them number of antacids medicines ?



**Watch Video Solution**

6. Testostrom, progesteron , norethindrone , ethynylestradial. Among them how many compounds contains steroid ring .



**Watch Video Solution**

7. Number of fused six membered rings in sterol ?



**Watch Video Solution**