



CHEMISTRY

BOOKS - SRS PUBLICATION

HOW FABRICS ARE MADE

Question Bank

1. When we burn artificial fibers it gives a ____
smell.



Watch Video Solution

2. *Fibre* → _ _ → *Fabric*



Watch Video Solution

3. The process of removing seeds from cotton wool is called_____.



Watch Video Solution

4. _____ is called golden fibre.



[Watch Video Solution](#)

5. An example of a natural fibre_____.



[Watch Video Solution](#)

6. Artificial fibre is

A. Cotton

B. Wool

C. Acrylic

D. Jute

Answer: C



Watch Video Solution

7. An instrument for spinning

A. Needle

B. Knife

C. Spindle

D. Scissor

Answer: C



Watch Video Solution

8. Making fabric from cotton yarn is called-

A. Spinning

B. Ginning

C. Weaving

D. Cutting

Answer: C



Watch Video Solution

9. Jute fibre is obtained from this part of a jute plant

A. Root

B. Leaves

C. Flowers

D. Stem

Answer: D



 [Watch Video Solution](#)

10. Name some salts which are used in your home?



[Watch Video Solution](#)

11. Yarn is stronger than fibre why?



[Watch Video Solution](#)

12. What is the difference between natural fibres and artificial fibres?



Watch Video Solution

13. How do you get jute yarn? Write the process.



Watch Video Solution

14. What will happen if a rain coat is made from cotton fabric? Why?



Watch Video Solution

15. Make a flow chart showing the process of getting a fabric (clothes) from cotton plant



Watch Video Solution

16. Siri donated cloth bags to her schoolmates on her birthday.why should we appreciate her?



Watch Video Solution

17. Prepare some slogans to promote using natural fibre bags instead of polythene bags.



Watch Video Solution

18. Prepare a bag using cloth.



[Watch Video Solution](#)

19. Make a scrap book containing picture of different types of febric and name them.



[Watch Video Solution](#)

20. Discuss with your teacher and prepare an information chart about spinning mills in your state.



[Watch Video Solution](#)

21. Collect news items about handloom workers and cotton growers. Analyze one news item in your own way.



Watch Video Solution

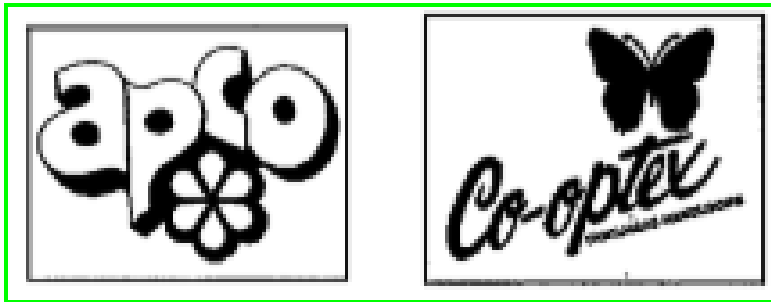
22. What did you do to know whether artificial fibres give pungent smell while burning? Write the steps of your experiment.



Watch Video Solution

23. Observe the logos. What does this mean?

Collect information about this from your school library.



[Watch Video Solution](#)

24. People dress up according to the season. The earth's revolution is responsible for the changing seasons.



[Watch Video Solution](#)

25. Try to find out the properties of each type of fabric(cotton,wool ,polyester,etc.)



[Watch Video Solution](#)

26. Look at the Telangana map and list out the places where cotton is grown.



[Watch Video Solution](#)

27. What are the uses of gunny bags?



Watch Video Solution

28. Where do you see them?



View Text Solution

29. How is jute yarn made?



Watch Video Solution

30. Is this process of artificial fibre similar to that of cotton or is there any difference?

A. same

B. different

C. both

D. none

Answer:



Watch Video Solution

List the fabric items in your house and state what type of fabric they are made of. Classify them into cotton, silk, wool, polyester, terylene, etc. Try to enrich the list as much as you can. For identifying the fabrics, you can take the help of your elders and teachers.

Table: 2

S.No	Type of Fabric	Fabric Items
1.	Cotton	Shirt, towel, saree
2.	Silk	Kurta, saree, wedding gowns, ties, pyjamas
3.	Wool	Sweater, muffler, gloves, jackets, scarfs
4.	Polyester	Raincoat, umbrella, swim suits
5.	Linen	Trousers, shirts, sarée, aprons, table clothes

31.

Which kind of fabric mostly used in your house?



Watch Video Solution

List the fabric items in your house and state what type of fabric they are made of. Classify them into cotton, silk, wool, polyester, terylene, etc. Try to enrich the list as much as you can. For identifying the fabrics, you can take the help of your elders and teachers.

Table: 2

S.No	Type of Fabric	Fabric Items
1.	Cotton	Shirt, towel, saree
2.	Silk	Kurta, saree, wedding gowns, ties, pyjamas
3.	Wool	Sweater, muffler, gloves, jackets, scarfs
4.	Polyester	Raincoat, umbrella, swim suits
5.	Linen	Trousers, shirts, sarée, aprons, table clothes

32.

Q. Which kind of fabric is not to be used in your house?

How can you identify the type of fabric?



Watch Video Solution

Collect some natural and artificial fabrics and observe the following characteristics. Record your observations in table 3.

Table: 3

S.No	Character	Natural Fabric	Artificial Fabric
1.	Water absorbing nature	more	less
2.	Time taken to dry	more time	less time
3.	Smell while burning	no smell	pungent smell
4.	Result after burning	forms ash	melts
5.	Stretching capacity of yarn	less	more
6.	Smoothness	rough	smooth

33.

Which type of fabric are smooth in nature?



[Watch Video Solution](#)

Collect some natural and artificial fabrics and observe the following characteristics. Record your observations in table 3.

Table: 3

S.No	Character	Natural Fabric	Artificial Fabric
1.	Water absorbing nature	more	less
2.	Time taken to dry	more time	less time
3.	Smell while burning	no smell	pungent smell
4.	Result after burning	forms ash	melts
5.	Stretching capacity of yarn	less	more
6.	Smoothness	rough	smooth

34.

Which type of fabric dry in a short time.



[Watch Video Solution](#)

35. Do you find any relation between smoothness and time to dry?



[Watch Video Solution](#)

Collect some natural and artificial fabrics and observe the following characteristics. Record your observations in table 3.

Table: 3

S.No	Character	Natural Fabric	Artificial Fabric
1.	Water absorbing nature	more	less
2.	Time taken to dry	more time	less time
3.	Smell while burning	no smell	pungent smell
4.	Result after burning	forms ash	melts
5.	Stretching capacity of yarn	less	more
6.	Smoothness	rough	smooth

36.

Which fabrics give ash when they are burnt?



[Watch Video Solution](#)

37. Collect some aquatic plants-cut the leaves and stems. Observe them under microscope and record your observations like air

presence/absence of air spaces etc and answer the below:

What make them float?



[Watch Video Solution](#)

38. Coconut is also a fibre. Make a list of some articles made of coconut fibre.



[Watch Video Solution](#)

39. Explain the process of making yarn from cotton wool.



Watch Video Solution

40. What would you do to remove wrinkles from your shirt or skirt?



Watch Video Solution

41. Nibha wants to buy clothes to parents for winter wear. What type of clothes would you suggest? Specify reasons.



Watch Video Solution

42. Why do we call some fibres artificial man made fibres?



Watch Video Solution

43. What will happen, if we use cotton ropes in preparing parachutes?



Watch Video Solution

44. Which fabrics do you prefer? Natural or synthetic? Why? Discuss comparatively.



Watch Video Solution

45. Ramesh wants to buy shirts for summer. What type of clothes would you suggest him to buy?



Watch Video Solution

46. Give two examples of following: Fibres from plant



Watch Video Solution

47. Give two examples of following: Fibres from animals



Watch Video Solution

48. Give two examples of following: Artificial fibres



Watch Video Solution

49. Write about spinning.



Watch Video Solution

50. Write about weaving



Watch Video Solution

51. Gunny bags are made of _____



Watch Video Solution

52. Why is there a difference in the prices of fabrics?



Watch Video Solution

53. What are the advantages of natural fibre over artificial fibre?



Watch Video Solution

54. Traditionally fishermen used cotton nets. Now they are using nylon nets. What is the advantage of using nylon nets?



Watch Video Solution

55. While purchasing your dress what doubts would you clarify from the shopkeeper?



Watch Video Solution

56. Ask your friend to think the name of any food. Now you have to guess its name. For this you can ask some question. Your friend can only answer in Yes or No . What/How many questions did you ask before you could guess the answer ?



Watch Video Solution

57. Your school planned an educational tour to mangalagiri handloom industry. you met a

weaver weaving a saree there.what questions you ask the weaver?



[Watch Video Solution](#)

58. You have met a textile merchant .What questions you ask him?



[Watch Video Solution](#)

59. How do you identify the threads in the febric? Describe the procedure.



[Watch Video Solution](#)

60. You are given a piece of cloth. How do you identify its fibres?



[Watch Video Solution](#)

61. Classify the fabric of following items as natural or artificial. Dhoti, Venkatagiri saree, jeans, umbrella cloth, bed sheets, your shirt or skirt, rain coat, gunny bags.



[Watch Video Solution](#)

62. Read the following fibres and classify them as natural fibre artificial fibre in tabular form.

Wool,nylon,terylene,cotton ,silk
,acrylic,polyester



[Watch Video Solution](#)

63. Write a flow chart regarding coconut husk?



[Watch Video Solution](#)

64. Write the process of mat making using diagram.



Watch Video Solution

65. How do you appreciate the introduction of artificial fibre in the textile industry?



Watch Video Solution

66. Which fibres source material is not exhaustible? Why?



Watch Video Solution

67. What type of clothes do you wear in winter?



Watch Video Solution

68. Cotton is mainly



Watch Video Solution

69. An instrument for spinning



Watch Video Solution

70. Which of the following will be obtained from plants and animals?

A. *A.* Natural fibres

B. *B.* Artificial fibres

C. *C*. Synthetic fibres

D. *D*. Both B and C

Answer: A



Watch Video Solution

71. Which of the following is an example of artificial fibre?

A. 1. Cotton

B. 2. Wool

C. 3. Silk

D. 4. Nylon

Answer: D



Watch Video Solution

72. The process of removing seeds from cotton wool is called_____.



Watch Video Solution

73. Making fabric from cotton yarn is called-



[Watch Video Solution](#)

74. _____ is called golden fibre.



[Watch Video Solution](#)

75. Fibres made up of chemicals are called _____.

A. 1. Artificial

B. 2. man made

C. 3. synthetic

D. 4. All of these

Answer: D



Watch Video Solution

76. Match the following

Match the following.

Group - I

1. Silk ()
2. Wool ()
3. Jute ()
4. Cotton ()

Group - II

- a) Fur of sheep
- b) Plant fibre
- c) Cotton bolls
- d) Silk worm

A. 1. 1-a,2-b,3-c,4-d

B. 2. 1-d,2-a,3-b,4-c

C. 3. 1-d,2-c,3-b,4-a

D. 4. 1-c,2-b,3-d,4-a

Answer: B



Watch Video Solution

77. Match the following

Group - I		Group - II
1. Animal fibre	()	a) Cotton
2. Plant fibre	()	b) Nylon
3. Artificial fibre	()	c) Wool

A. 1. 1-a,2-b,3-c

B. 2. 1-c,2-b,3-a

C. 3. 1-c,2-a,3-b

D. 4. 1-a,2-c,3-b

Answer: C



Watch Video Solution

78. Jute fibre is obtained from this part of a jute plant



Watch Video Solution

79. Looms operated by man power are called

A. 1. Powerlooms

B. 2. handlooms

C. 3. Spindle

D. 4. All of these

Answer: A



Watch Video Solution

80. Looms operated by the electric motors

A. Powerlooms

B. handlooms

C. Spindle

D. All of these

Answer: A



Watch Video Solution

81. Ginning is the process associated with.....



Watch Video Solution

82. Arranging of yarn horizontally and vertically to make fabric is known as.....



Watch Video Solution

83. Which of the following is made up of natural fibre?

A. 1. Rain coat

B. 2. Shoe lace

C. 3. Synthetic saree

D. 4. Silk saree

Answer: D



84. Jute industries are found in the following states.

A. 1. West bengal ,assam

B. 2. Odisha , Bihar

C. 3. Tripura,Meghalaya

D. 4. All of these

Answer: D



85. Match the following columns

Fill the blanks

Silk - Saree

Cotton -

Linen - Trousers

A. Towel

B. Saree

C. Shirt

D. All of these

Answer: D



Watch Video Solution

86. Find the mismatched one

A. 1. Summer-cotton

B. 2. Rainy-silk

C. 3. Winter-wool

D. 4. All of these

Answer: C



Watch Video Solution

87. Match the following

Group - I		Group - II	
1. Cotton	()	a) Moths	
2. Polyester	()	b) Heavy fabrics	
3. Silk	()	c) Light fabrics	

A. 1-1-a,2-b,3-c

B. 2. 1-c,2-b,3-a

C. 3. 1-c,2-a,3-b

D. 4. 1-b,2-c,3-a

Answer: B



Watch Video Solution

88. Choose the correct statement regarding natural fibre

- A. Absorbs more water
- B. Less time to dry
- C. Chemicals are used to make
- D. All of these

Answer: A



Watch Video Solution

89. Cotton grows in ____ soil.



Watch Video Solution

90. The special property of silk fabric:

A. Slippery

B. Coarse

C. Shiny

D. Both A and C

Answer: D



Watch Video Solution

91. Cotton crop is widely grown in districts of

A. Krishna guntur

B. Krishna prakasam

C. Prakasam guntur

D. Chittoor krishna

Answer: C



Watch Video Solution

92. When natural fibre is burnt it gives_____



Watch Video Solution

93. When artificial fibre is burnt

A. *a.* Melts

B. *b.* Give pungent smell

C. *c.* Gives ash

D. *d.* Both a and b

Answer: D



Watch Video Solution

94. Paddy chilli and other commercial crops are usually packed in _____ bags

A. 1. cotton

B. 2. silk

C. 3. jute

D. 4. both 1 and 2

Answer: C



Watch Video Solution

95. Human being in ancient times used _____ as clothes,

A. 1. leaves

B. 2. skin of animals

C. 3. metals

D. 4. all of these

Answer: C



Watch Video Solution

96. Machilipatnam pedana are famous for hand printed cotton textile called _____



97. This is not a plant fibre.....

A. Nylon

B. Hemp

C. Flax

D. Jute

Answer: A



98. Which of the following is not a natural fibre?

A. Silk

B. Wool

C. Polyester

D. Cotton

Answer: C



Watch Video Solution

99. Silk:Insect:Wool:_____



Watch Video Solution

100. Why do we dye the yarns and coated then with chemicals?

- A. To get soft fabric
- B. To make weak fabric
- C. To get strong fabric
- D. All of these

Answer: C



Watch Video Solution

101. If the fibre absorbs less water high in stretching capacity and melts on burning what is it?

- A. *a.* Natural fibres
- B. *b.* Artificial fibres
- C. *c.* man made fibre
- D. *d.* Both b and c

Answer: D



Watch Video Solution

102. What will you do before inserting the thread into the eye of the needle?

A. *a.* WET THE end

B. *b.* Twist the end

C. *c.* both a and b

D. *d.* Melt the end

Answer: C



Watch Video Solution

103. Choose the correct order in making
choose yarn

A. 1. cotton ball → Fibre → Yarn →
Fabric

B. 2. Fibre → Cotton boll → fibre →
fabric`

C. 3. Cotton boll → yarn → fibre →

fabric

D. 4. yarn → fibre → cotton boll →

fabric

Answer: A



Watch Video Solution

104. After washing cotton clothes ____ are formed.



105. Read the table and answer the following question

Type of Fabric	Fabric item
Wool	Sweater, gloves
Polyester	Shirt, skirt
Linen	Trouser, saree

Choose the natural fabric from the table

- A. Wool
- B. polyester
- C. Linen
- D. All of these

Answer: A



Watch Video Solution

106. Read the table and answer the following question

Type of Fabric	Fabric item
Wool	Sweater, gloves
Polyester	Shirt, skirt
Linen	Trouser, saree

Which type of fabric is used in winter season?

A. Wool

B. Linen

C. Polyester

D. Both B and C

Answer: A



Watch Video Solution

107. Read the paragraph and answer the following question

The coconut coir industry is one of the rural industry in India. It is located mainly in the states like Kerala, Tamilnadu, Karnataka, Andhra Pradesh and Odisha. It provides source of income to about 5 lakhs artisans in rural areas. Women constitute about 80% of the work force in coir industry.

Choose the state in which coir industry is located

A. Kerala

B. Tamil Nadu

C. Andhra pradesh

D. All of these

Answer: D



Watch Video Solution

108. Match the following

COLUMN - I (Quantity)

- A) Conductivity
- B) Cell constant
- C) Molar conductance
- D) Equivalent conductance

COLUMN - II (Symbol)

- p) Λ_m
- q) k
- r) Λ_e
- s) l/a

A. 6 lakhs

B. 8 lakhs

C. 5 lakhs

D. 9 lakhs

Answer: C



Watch Video Solution

109. Match the following

COLUMN - I

- A) Hg_2Cl_2
- B) Agar-agar
- C) 0.1 N KCl
- D) Quinhydrone

COLUMN - II

- p) Salt bridge
- q) Calomel electrode
- r) Used in ice cream
- s) Redox electrode

A. 70

B. 80

C. 90

D. 50

Answer: B



Watch Video Solution

110. Match the following

Column - I

- a) Displacement of body in S.H.M
- b) Velocity of body in S.H.M
- c) Acceleration of body in S.H.M
- d) Maximum velocity of body

Column - II

- e) $r\omega\cos\omega t$
- f) $r\sin\omega t$
- g) $r\omega$
- h) $-r\omega^2\sin\omega t$

A. Andhrapradesh

B. karnataka

C. Odisha

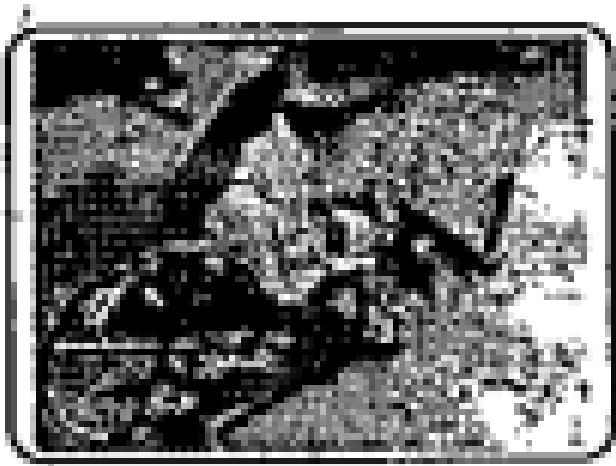
D. All of these

Answer:



Watch Video Solution

111. Identify the given diagram



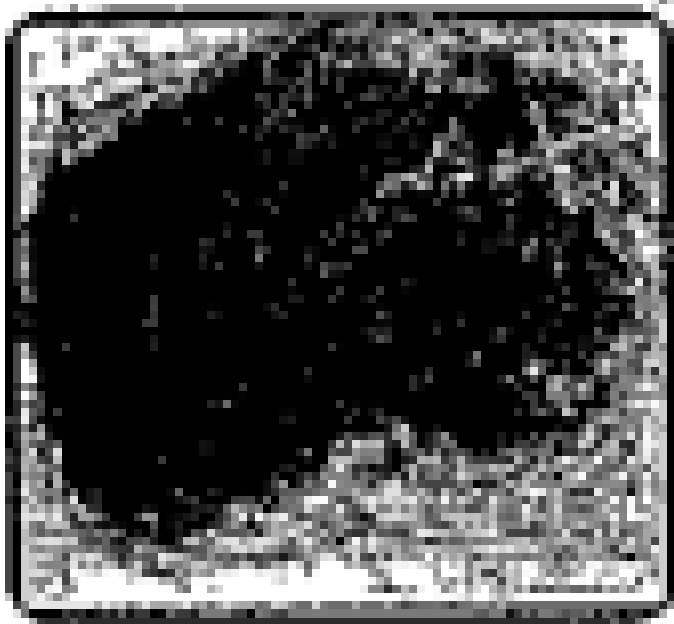
- A. Spindle machine
- B. spinning Wheel
- C. Loom fibre machine
- D. Yarn

Answer: B



Watch Video Solution

112. Identify the given Coir product.



A. Coir path

B. Coir yarn

C. Coir fibre

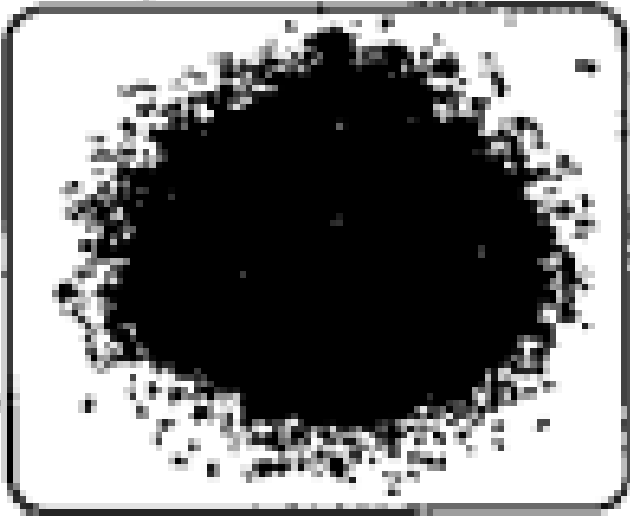
D. White husk

Answer: C



Watch Video Solution

113. Identify the given Coir product.



A. Coir yarn

B. Coir pith

C. Coir fibre

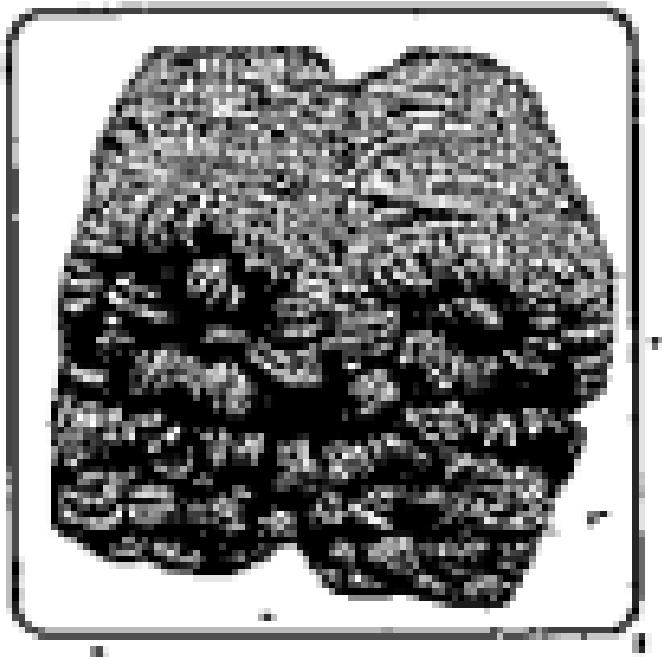
D. Brown husk

Answer: B



Watch Video Solution

114. Identify the given Coir product.



A. Coir yarn

B. Coir fibre

C. Coir path

D. Brown fibre

Answer: A



Watch Video Solution

115. ___ fabric is used in book binding.



Watch Video Solution

116. Choose the correct statement

A. Ancient people used to wear animal skin
as clothes

B. Warriors used to wear animal skin as
clothes

C. Ancient people used to wear leaves as
clothes

D. All of the above correct

Answer: D



Watch Video Solution

117. To protect our environment we should use _____ instead of polythene bags.

A. Cloth bags

B. paper bags

C. both a and b

D. plastic carry bags

Answer: C



Watch Video Solution

118. _____ is famous for carpet industry.

A. Machilipatnam

B. pedana

C. uppada

D. venkatagiri

Answer: A



Watch Video Solution

119. ____ state alone accounts for over 50 % of raw jute production.

A. ASSAM

B. West bengal

C. Bihar

D. Uttar pradesh

Answer: B



 [Watch Video Solution](#)