



BIOLOGY

BOOKS - PEARSON IIT JEE

FOUNDATION

MOVEMENT-AN AMAZING ACTIVITY

Example

1. The movement of organs in human body requires the coordinated functioning of

various systems in addition to skeletal system and muscular system. Discuss.



[Watch Video Solution](#)

2. What is the similarity in the body shape of fish and birds? Justify the purpose.



[Watch Video Solution](#)

**Test Your Concepts Very Short Answer Type
Questions Fill In The Blanks**

1.is the ability of an organism to move from one place to another.



[Watch Video Solution](#)

2. Total number of bones in the adult human is



[Watch Video Solution](#)

3. ____ system gives protection to inner delicate organs





[Watch Video Solution](#)

4. ___ helps in the generation of blood cells.



[Watch Video Solution](#)

5. Give one word for following.

The place where two or more bones are joined together.



[Watch Video Solution](#)

6. ___ is the chain of small bones joined together supporting the body.



[Watch Video Solution](#)

7. Bones possess ____ at the end to reduce friction.



[Watch Video Solution](#)

8. Joint between humerus and radio-ulna is



[Watch Video Solution](#)

9. In birds ____ are modified to wings.



[Watch Video Solution](#)

10. The connective tissue that connects a muscle to a bone is



[Watch Video Solution](#)

11. In cockroach a pair of_____ helps in perceiving the sensation.



Watch Video Solution

12. Earthworm moves by the contraction and relaxation of___



Watch Video Solution

13. The tip of the nose is made up of _____



[Watch Video Solution](#)

14. The girdle that supports shoulder region is_____



[Watch Video Solution](#)

15. The joint that allows movement in only one direction is_____



[Watch Video Solution](#)

Test Your Concepts Very Short Answer Type Questions Select The Correct Alternative

1. Which of the following joints allow movement in many directions ?

- A. Pivot joint
- B. Hinge joint
- C. Ball and socket joint
- D. Gliding joint

Answer: C





Watch Video Solution

2. Name the bands of tough elastic tissue that hold the bones together.

A. Tendon

B. Ligament

C. Cartilage

D. Bone

Answer: B



Watch Video Solution

3. Which of these are parts of hindlimbs?

i) Femur (ii) Humerus (iii) Tarsals (iv) Wrist

A. i and ii

B. i and iii

C. ii and iii

D. i and iv

Answer: B



Watch Video Solution

4. Identify the only movable bone in the skull.

A. Lower jaw

B. Upper jaw

C. Cheek bone

D. Nasal bone

Answer: A



Watch Video Solution

5. Which animal has backbone and ribs interconnected with each other?

A. Fish

B. Snail

C. Cockroach

D. Snake

Answer: D



Watch Video Solution

6. Which of the following animals have hollow bones?

A. Fish

B. Snakes

C. Birds

D. Human beings

Answer: C



Watch Video Solution

7. Identify the bony framework connecting the chest bone and backbone.

A. Vertebrate

B. Muscles

C. Diaphragm

D. Ribcage

Answer: D



Watch Video Solution

8. Where do you find the fixed joint in the human body?

A. Elbow

B. Skull

C. Knee

D. Neck

Answer: B



Watch Video Solution

9. Identify the characteristic feature of the cockroach.

A. Three pairs of legs and two pairs of wings.

B. Two pairs of legs and three pairs of wings.

C. Three pairs of legs but no wings

D. Two pairs of wings but no legs.

Answer: A



[Watch Video Solution](#)

10. The longest bone of the human body is

A. Humerus

B. Femur

C. Radius

D. Vertebral column

Answer: B



[Watch Video Solution](#)

Test Your Concepts Very Short Answer Type Questions True Or False

1. Lifting of hand is caused by the contraction of muscles.



[Watch Video Solution](#)

2. In birds, breastbones are modified to hold flight muscles and help in the movement.



[Watch Video Solution](#)

3. The girdle that supports hip region is called pectoral girdle.



Watch Video Solution

4. Clavicle is also known as breastbone.



Watch Video Solution

5. Endoskeleton is seen in earthworm.



Watch Video Solution

Test Your Concepts Short Answer Type Questions

Answer The Questions

1. Why does your chest move up and down when you breathe?



[Watch Video Solution](#)

2. Explain the role of muscles in body movements.



[Watch Video Solution](#)

3. Define (a) skeleton (b) joint.



[Watch Video Solution](#)

4. Write a note on the functions of pelvic girdle.



[Watch Video Solution](#)

5. Give the importance of vertebral column in human beings.



[Watch Video Solution](#)

6. Setae of earthworm helps in locomotion.
Discuss.



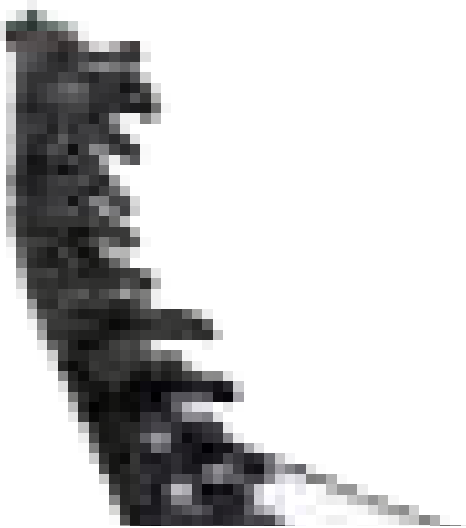
[Watch Video Solution](#)

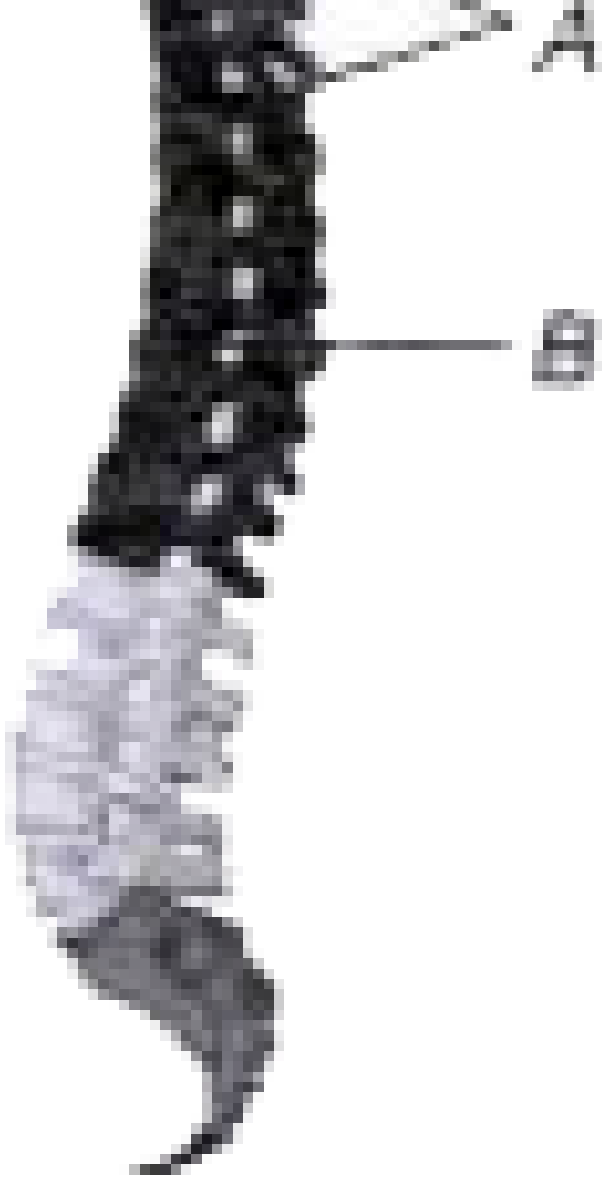
7. Mention the type of skeleton present in earthworm.



[Watch Video Solution](#)

8. Answer the question given below on the basis of the figure given.





(i) Identify the above figure and label the parts A and B. (ii) How many small bones are present

in this part? (iii) Identify the organ which passes through the hollow tube.



[View Text Solution](#)

9. Give scientific reasons.

Fish has a streamlined body.



[Watch Video Solution](#)

10. Give scientific reasons.

Teeth are not considered as bones.



[Watch Video Solution](#)

11. Give scientific reasons.

Bones of skull are immovable.



[Watch Video Solution](#)

12. Give scientific reasons.

Spinal cord is the most vital part in human body.



[Watch Video Solution](#)

Concept Application

1. Why are last two pairs of ribs known as floating ribs?



[Watch Video Solution](#)

2. Why do snakes move in zig-zag manner?



[Watch Video Solution](#)

3. What is the role of biceps and triceps in lifting weight?



[Watch Video Solution](#)

4. Physical exercises help in keeping our bones healthy.



[Watch Video Solution](#)

5. The number of bones in an adult is less than that in an infant.



[Watch Video Solution](#)

6. When a fracture occurs, bones heal naturally with out any treatment.



[Watch Video Solution](#)

Assessment Test Test 1

1. Find the co-related terms.

_____ : Earthworm :: Foot : Snail



[Watch Video Solution](#)

2. Find the co-related terms.

Wrist : Gliding joint :: Elbow: ____



[Watch Video Solution](#)

3. Find the co-related terms.

12 pairs : Ribs :: 33 : _____



[Watch Video Solution](#)

4. Find the co-related terms.

Skeleton : Supports :: _____ : Connects



Watch Video Solution

5. Find the co-related terms.

Skeleton : Supports :: _____ : Connects



Watch Video Solution

6. Pick the odd one out.

Feathers, fins, shell, foot.



[Watch Video Solution](#)

7. Pick the odd one out.

Femur, humerus, tibia, fibula.



[Watch Video Solution](#)

8. Pick the odd one out.

Elbow, knee, neck, skull.



[Watch Video Solution](#)

9. Pick the odd one out.

Skull, vertebral column, sternum, limbs.



Watch Video Solution

10. Pick the odd one out.

Biceps, triceps, diaphragm, knee cap.



Watch Video Solution

11. Match Column I with Column II.

Column I	Column II
(A) Lower jaw in human beings	(a) Snakes
(B) Powerful chest muscles	(b) Snail
(C) Strong muscles attached to ribs	(c) Earthworm
(D) Moves by circular and longitudinal muscles	(d) Birds
(E) Foot helps in the movement	(e) Movable



[Watch Video Solution](#)

Assessment Test Test 1 True Or False

1. The pectoral girdle links the arms with vertebral column.



Watch Video Solution

2. Knee joint is the ball and socket joint.



Watch Video Solution

3. A snail moves with the help of the shell.



Watch Video Solution

4. The backbone in the earthworm helps in movement.



[Watch Video Solution](#)

5. Breaking of bones is known as fracture.



[Watch Video Solution](#)

[Assessment Test Test 1 Answer The Questions](#)

1. Give two examples for ball and socket joints.



[Watch Video Solution](#)

2. Name the bones that form pectoral girdle in human beings.



[Watch Video Solution](#)

3. Identify the joints present in Knee joint



[Watch Video Solution](#)

4. Identify the joints present in Ankle



[Watch Video Solution](#)

5. Identify the joints present in Between skull and spine



[Watch Video Solution](#)

6. Identify the joints present in Shoulder



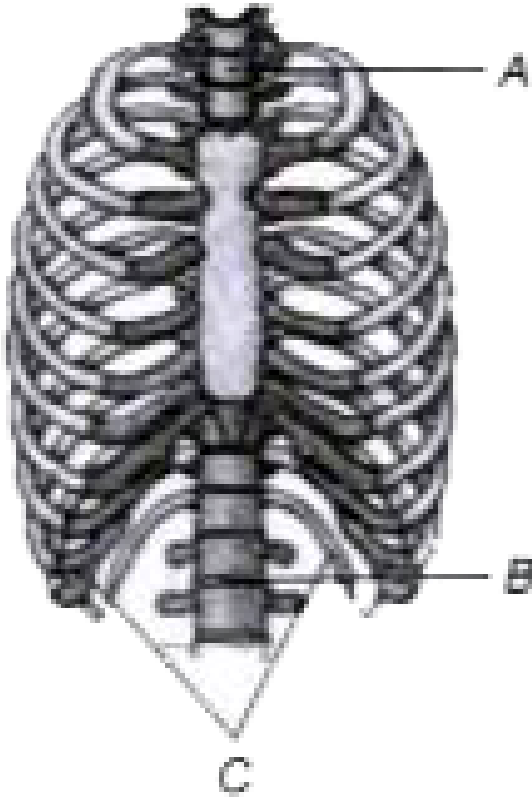


Watch Video Solution

7. Identify the joints present in Elbow



Watch Video Solution

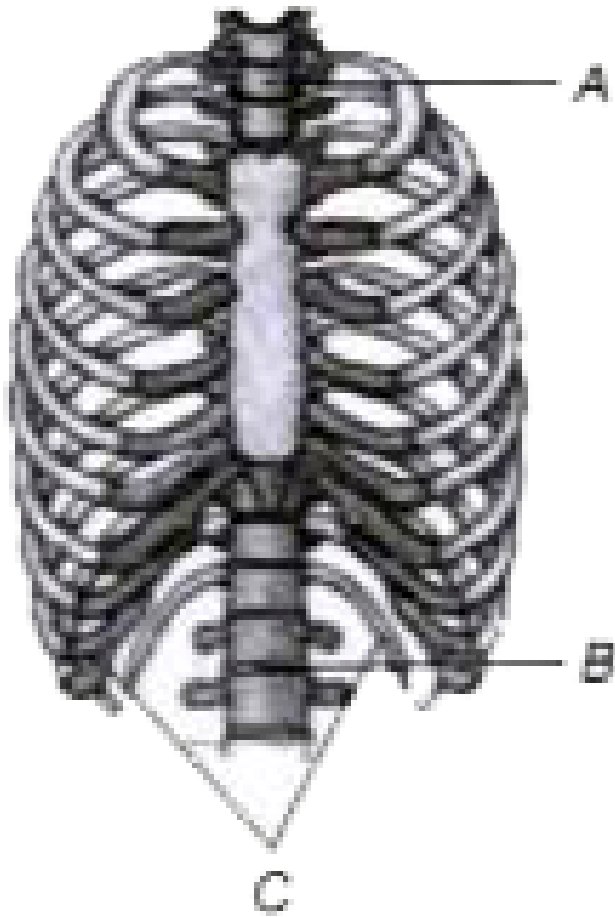


8.

Identify the above figure and label the parts A, B and C.



[View Text Solution](#)

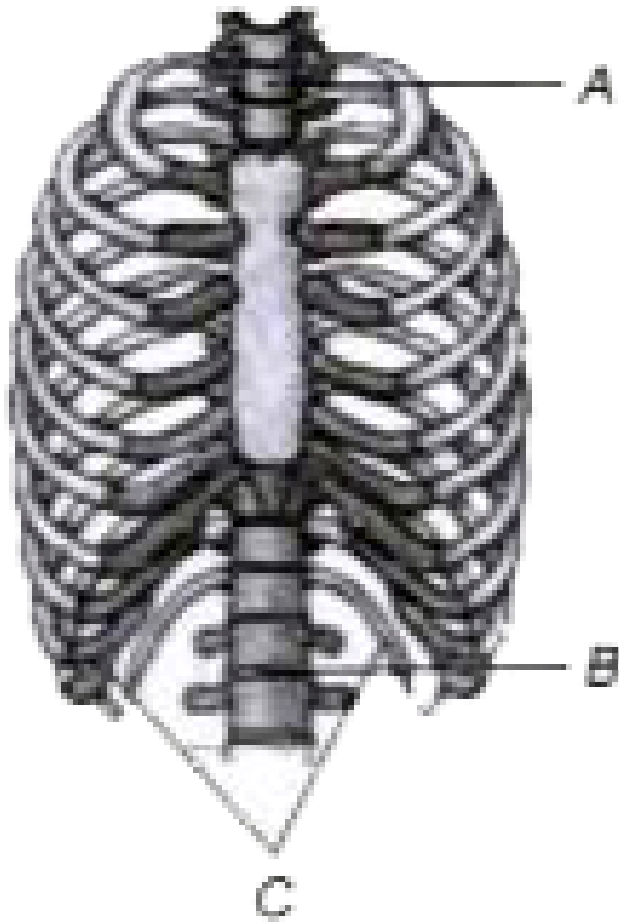


9.

What is the number of bones in it?



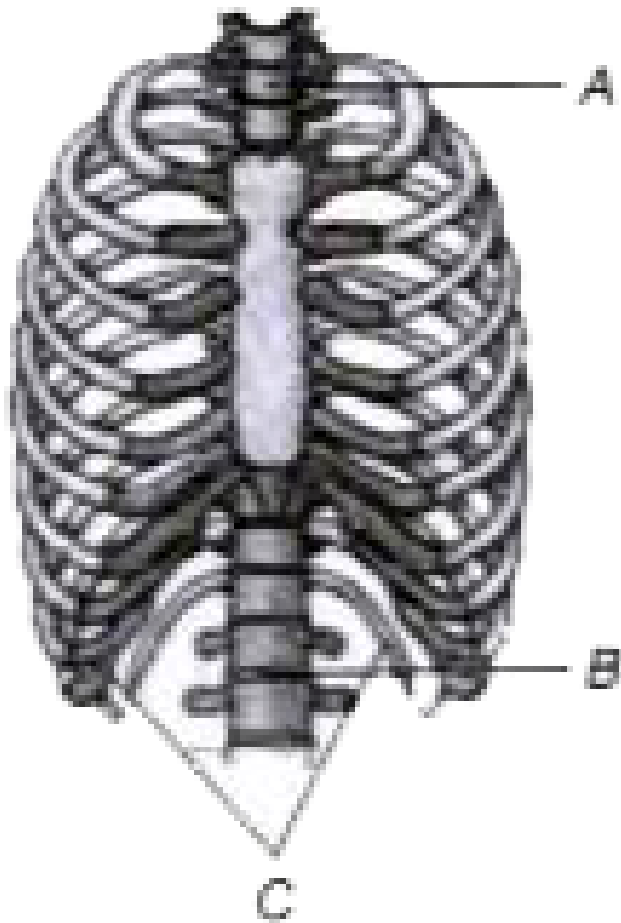
[View Text Solution](#)



10.

What is the significance of C?

 [View Text Solution](#)

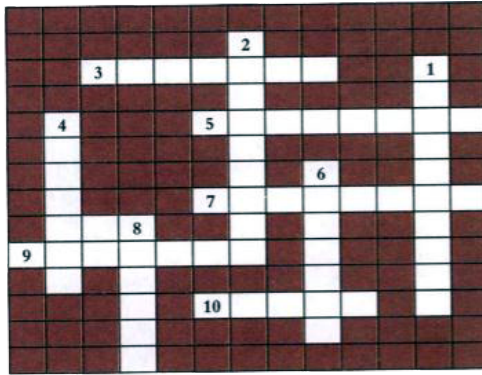


11.

The given figure indicates which organ and what organs does it protect?

 [View Text Solution](#)

Assessment Test Test 1 Crossword



Across

1. Place where two bones meet
3. Brain box
4. Breastbone
5. Protect spinal cord
7. Organs to detect smell in insects
8. Thigh bone
9. Bone in upper arm
10. Place where two bones meet

Down

1. Place where blood cells originate
2. Fibres connecting bones to bones
4. Breastbone
6. Fibres connecting muscles to bone
8. Thigh bone



[View Text Solution](#)