



PHYSICS

BOOKS - MBD -HARYANA BOARD

ELECTRICITY AND CIRCUITS

Example

1. Fill in the blanks .

A device that is used to break an electric circuit is called _____ .



[Watch Video Solution](#)

2. An electric cell has _____ terminals.



[Watch Video Solution](#)

3. Mark 'True' or 'False' for following statements:

Electric current can flow through metals.



[Watch Video Solution](#)

4. Mark 'True' or 'False' for following statements:

Instead of metal wires, a jute string can be used to make a circuit.



[Watch Video Solution](#)

5. Mark 'True' or 'False' for following statements:

Electric current can pass through a sheet of thermo col.



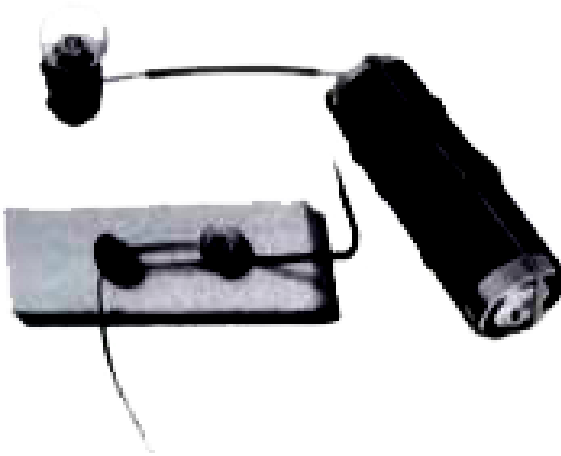
[Watch Video Solution](#)

6. Explain why the bulb would not glow in the arrangement shown in figure .



[Watch Video Solution](#)

7. Complete the drawing shown in Fig 12.14 to indicate where the free ends of the two wires should be joined to make the bulb glow.



[Watch Video Solution](#)

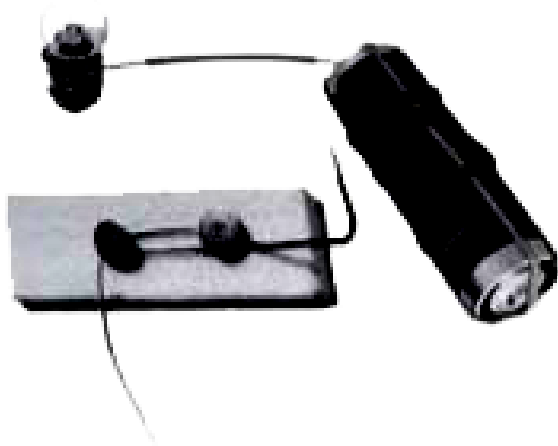
8. What is the purpose of using an electric switch? Name some electrical gadgets that have switches built into them.



Watch Video Solution

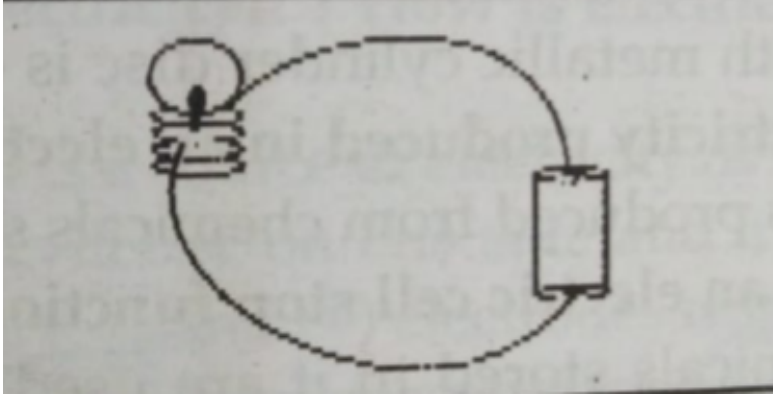
9. Would the bulb glow after completing the circuit shown in Fig. 12.14 if instead of safety

pin we use an eraser?



[Watch Video Solution](#)

10. Would the bulb glow in the circuit shown in fig.?
in fig.?



[Watch Video Solution](#)

11. Using the 'conduction tester' on an object was found that the bulb begins to glow. Is that object a conductor or an insulator? Explain.



[Watch Video Solution](#)

12. Why should an electrician use rubber gloves while repairing an electric switch at your home? Explain.



Watch Video Solution

13. The handles of the tools like screwdrivers and pliers used by electricians for repair work usually have plastic or rubber covers on them. Can you explain why?



Watch Video Solution

14. Why do we use electricity?



Watch Video Solution

15. Where does the torch get electricity from ?



Watch Video Solution

16. Where are electricity cells used ?



Watch Video Solution

17. Which is +ve terminal of an electric cell ?



[Watch Video Solution](#)

18. Which is -ve terminal of an electric cell ?



[Watch Video Solution](#)

19. How is electricity produced in an electric cell ?



[Watch Video Solution](#)

20. When does an electric cell stop functioning ?



Watch Video Solution

21. What is a circuit ?



Watch Video Solution

22. When does a bulb glow ?



[Watch Video Solution](#)

23. In which direction current flows in a circuit ?



[Watch Video Solution](#)

24. What is a switch ?



[Watch Video Solution](#)

25. Name five conductors.



Watch Video Solution

26. Name five conductors.



Watch Video Solution

27. Name any five insulators.



Watch Video Solution

28. Which metals are used to make wires ?



Watch Video Solution

29. Is human body a conductor or an insulator?



Watch Video Solution

30. What are uses of electricity ?



Watch Video Solution

31. What is an electric cell ?How is electricity produced in it ?



Watch Video Solution

32. Write down the structure of a torch bulb.



Watch Video Solution

33. What is the difference between a conductor and an insulator?



Watch Video Solution

34. Why are metals used for making wires ?



Watch Video Solution

35. Pick out conductors and insulators from the following ?

Coin, cork, Glass, Rubber, Keys, Pin, Plastic

scale, Wooden

block, Aluminium

foil, Candle, Sewing needle, Thermocol, Paper and

Lead of pencil.



[Watch Video Solution](#)

36. A device which is used to break the circuit is-

A. Electric cell

B. Switch

C. Electric bulb

D. None of these.

Answer:



Watch Video Solution

37. An electric cell has terminals-

A. Three

B. One

C. Two

D. None of these.

Answer:



Watch Video Solution

38. To make electric wires is used-

A. Rubbr

B. Aluminium

C. Plastic

D. None of these.

Answer:



Watch Video Solution

39. the appliances being used by electricians has rubber because rubber is-

A. Conductor

B. Insulator

C. Has current flowing in the opposite direction.

D. None of these.

Answer:



Watch Video Solution

40. A torch cell has negative terminal made of

-

A. Copper

B. Zinc

C. Rubber

D. None of these.

Answer:



Watch Video Solution

41. In electric cell the source of current is -

- A. Positive terminal
- B. Neative terminal
- C. Chemcals stored in it
- D. None of these.

Answer:



Watch Video Solution

42. In an electric circuit the direction of current in a cell is-

A. from positive to negative terminal

B. from negative to positive terminal

C. for half time from positive to negative terminal and for other half time from

negative to positive terminal.

D. None of these.

Answer:



Watch Video Solution

43. On allowing current to flow in a fuse bulb, the bulb does not glow because -

A. filament breaks.

B. filament is bad conductor of current

C. filament is good conductor of electric current

D. None of these.

Answer:



Watch Video Solution

44. A substance through which electric current can flow is-

A. Conductor

B. Insulator

C. Electric circuit

D. None of these.

Answer:



Watch Video Solution

45. Cell is a device used to convert-

A. electrical energy into light energy

B. magnetic energy into electric energy

C. chemical energy into electrical energy

D. None of these.

Answer:



Watch Video Solution

46. The filament of electric bulb is made of

..... .

A. Tungsten

B. Copper

C. Platinum

D. Aluminium.

Answer:



Watch Video Solution