



## BIOLOGY

### BOOKS - ICSE

### DIGESTIVE SYSTEM

Exercises Tick The Most Appropriate Answer

1. The process of taking in food through the mouth is called

- A. digestion.
- B. ingestion.
- C. assimilation.
- D. absorption.

**Answer:**



Watch Video Solution

2. Digestion begins in the

- A. large intestine.
- B. oesophagus.
- C. stomach.
- D. mouth.

**Answer:**



Watch Video Solution

3. Which of the following help in crushing and grinding food?

- A. canines
- B. molars
- C. incisors

D. premolars

**Answer:**



**Watch Video Solution**

4. The fluid produced by the stomach is called

A. saliva.

B. gastric juice.

C. bile juice.

D. pancreatic juice.

**Answer:**



**Watch Video Solution**

5. Pepsin, a protein digesting enzyme, is present in the

A. oesophagus.

B. mouth.

C. stomach.

D. duodenum.

**Answer:**



**Watch Video Solution**

**6.** Food is absorbed in the

A. mouth

B. small intestine.

C. large intestine.

D. liver.

**Answer:**



**Watch Video Solution**

7. No digestion takes place in the

- A. mouth and pharynx.
- B. pharynx and oesophagus.
- C. oesophagus and stomach.
- D. pharynx and small intestine.

**Answer:**



**Watch Video Solution**

8. Fats are changed into fatty acids and glycerol by the action of

- A. lipase.
- B. bile.
- C. lipids

D. trypsin.

**Answer:**



[Watch Video Solution](#)

9. Glucose is stored in the form of

A. galactose.

B. maltose.

C. glycerin.

D. glycogen.

**Answer:**



[Watch Video Solution](#)

**Exercises Complete The Following Reactions**

1. proteins, proteoses and \_\_\_\_\_  $\xrightarrow{\text{trypsin}}$  \_\_\_\_\_

 [Watch Video Solution](#)

2. Chyme  $\xrightarrow{\text{bile}}$  \_\_\_\_\_

 [Watch Video Solution](#)

3. Maltose  $\xrightarrow{\text{maltase}}$  \_\_\_\_\_

 [Watch Video Solution](#)

4. Sucrose  $\xrightarrow{\text{sucrase}}$  \_\_\_\_\_ + \_\_\_\_\_

 [Watch Video Solution](#)

5. Fats  $\xrightarrow{\text{lipase}}$  \_\_\_\_\_ + \_\_\_\_\_





[Watch Video Solution](#)

## Exercises True Or False

1. The process of taking in food is called assimilation.



[Watch Video Solution](#)

2. Saliva contains lipase which digests carbohydrates.



[Watch Video Solution](#)

3. Stomach walls produce acid and enzymes which help to digest carbohydrates.



[Watch Video Solution](#)



4. The pancreas secretes bile juice.

 [Watch Video Solution](#)

5. State true or false. Water is absorbed in the large intestine.

 [Watch Video Solution](#)

## Exercises Differentiate Between

1. Digestion of fats takes place by\_\_\_\_\_

 [Watch Video Solution](#)

2. mechanical digestion and chemical digestion.

 [Watch Video Solution](#)

3. Distinguish between small intestine and large intestine.

 [Watch Video Solution](#)

4. Distinguish between digestion and assimilation.

 [Watch Video Solution](#)

### Exercises Find The Odd One Out Give Reasons For Your Choice

1. oesophagus, stomach, small intestine, liver

 [Watch Video Solution](#)

2. Find the odd one out.

canines, incisors, saliva, premolars

 [Watch Video Solution](#)

3. salivary amylase, pepsin, trypsin, erepsin

 [Watch Video Solution](#)

4. Maltase, lactase, aminopeptidase, sucrase

 [Watch Video Solution](#)

### Exercises Answer The Following In Short

1. How do teeth help in digestion?

 [Watch Video Solution](#)

2. What is dental plaque?

 [Watch Video Solution](#)

3. What is emulsification of fats?

 [Watch Video Solution](#)

4. Name the enzymes found in pancreatic juice.

 [Watch Video Solution](#)

### Exercises Answer The Following In Detail

1. What is meant by digestion? How does it differ from nutrition?

 [Watch Video Solution](#)

2. Name different types of teeth and their number in an adult human.

 [Watch Video Solution](#)

3. Liver does not secrete any enzymes yet it helps in digestion. How?



[Watch Video Solution](#)

4. What happens to the nutrients absorbed in the blood stream from the small intestine?



[Watch Video Solution](#)

5. How do villi help in absorption? Show with a diagram.



[Watch Video Solution](#)

6. You ate bread in the morning. Starting from the mouth, explain how it was digested.



[Watch Video Solution](#)

## Exercises

1. Number the following processes in their correct sequence of occurrence during digestion.

peristalsis ,tongue pushes the food ,grinding and mixing saliva ,cutting and tearing of food



[Watch Video Solution](#)

## Exercises You Have Eaten Food Containing Fats And Proteins Now Fill In The Blanks Numbered 1 12 To Complete Some Stages Of Digestion Of The Food

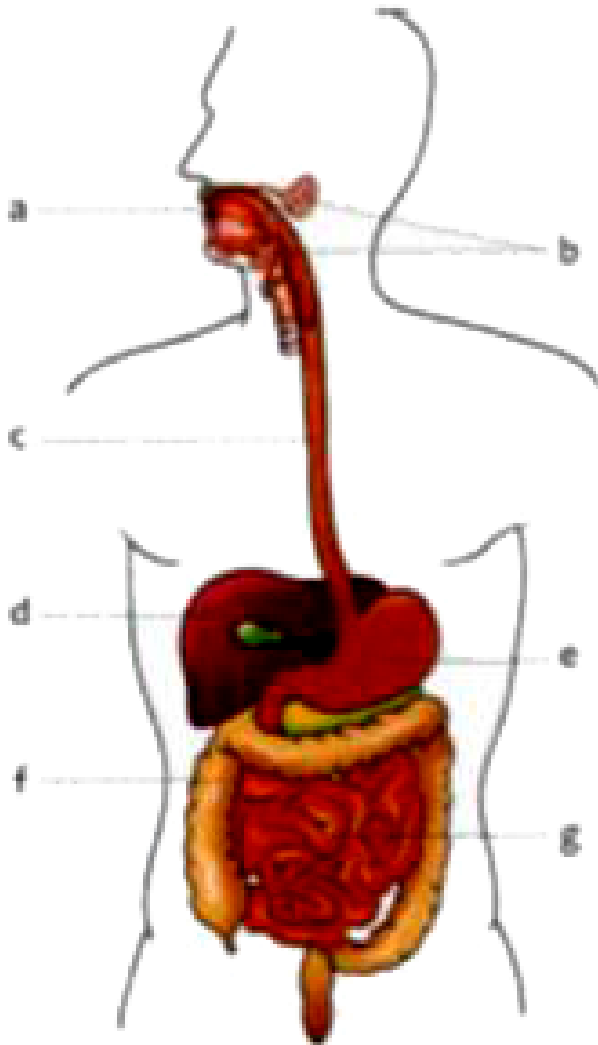
1. In the mouth grinding of food is brought about by \_\_1\_\_ and \_\_2\_\_. The saliva contains \_\_3\_\_ enzymes. The food then passes to stomach through pharynx and \_\_4\_\_. Peristalsis of food is caused by \_\_5\_\_. In the stomach pepsin acts on proteins to change them into \_\_6\_\_ and \_\_7\_\_. Bile is

secreted by \_\_8\_\_. In duodenum, pancreatic juice has \_\_9\_\_ and \_\_10\_\_ enzymes. Lipase acts on fats and converts them into \_\_11\_\_ and \_\_12\_\_ .



[Watch Video Solution](#)

**Exercises Given Is The Diagram Of Human Digestive System**



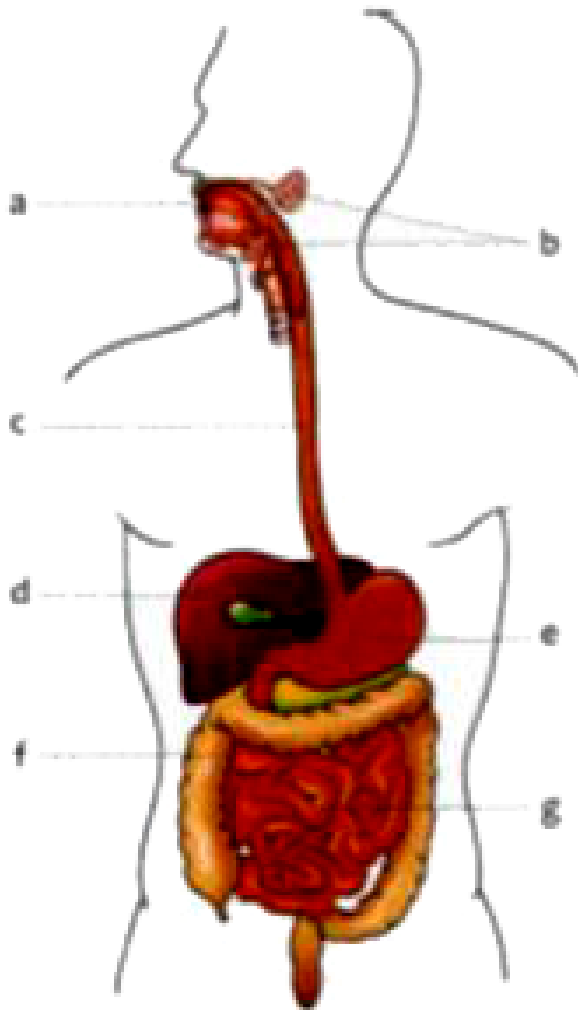
1.

Name the parts labelled a to g.



[Watch Video Solution](#)





2.

Name the parts where

A. hydrochloric acid is added to food.

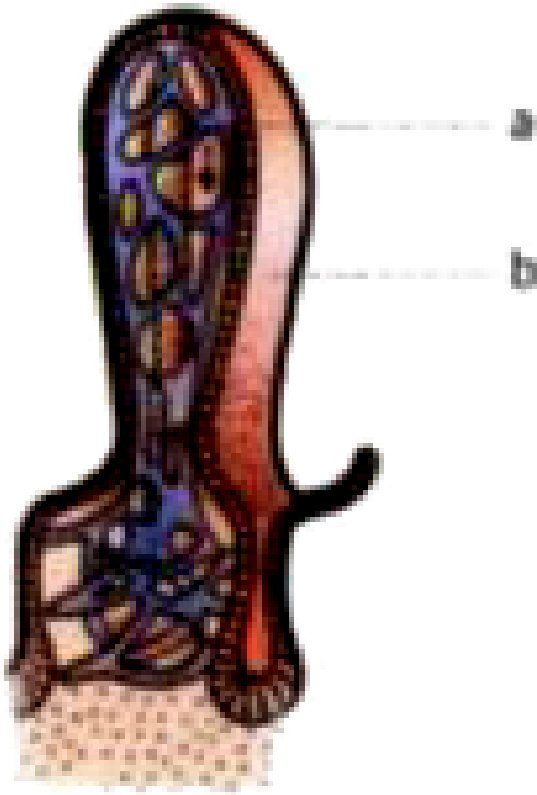
B. bile is produced.

C. water is absorbed.



Watch Video Solution

Exercises Given Is A Diagram Showing The Internal Structure Of A Part Of The Alimentary Canal



1.

Identify the part.



Watch Video Solution

2. Why does tobacco stimulate secretion of adrenaline?

 [Watch Video Solution](#)

3. Name two industrially important enzymes.

 [Watch Video Solution](#)

## Exercises Draw Labelled Diagrams Of The Following

1. Draw a well labelled diagram of Digestive system of humans

 [Watch Video Solution](#)

2. Draw Structure of a tooth

 [Watch Video Solution](#)

## Think And Answer

1. All teeth in our mouth are not alike. Give reason.



Watch Video Solution

2. Why are villi present only in the small intestine?



Watch Video Solution

## Check Your Progress Fill In The Blanks

1. Milk teeth are also called temporary or \_\_\_\_\_ teeth.



Watch Video Solution

2. Name different types of teeth and their number in an adult human.





[Watch Video Solution](#)

3. Food passes from the \_\_\_\_\_ to the oesophagus.



[Watch Video Solution](#)

4. \_\_\_\_\_ is a J-shaped muscular organ.



[Watch Video Solution](#)

5. \_\_\_\_\_ is a long, coiled tube that lies folded in the abdomen.



[Watch Video Solution](#)

6. Saliva contains an enzyme called \_\_\_\_\_



[Watch Video Solution](#)

7. \_\_\_\_\_ is made in the liver and stored in the gall bladder.



[Watch Video Solution](#)

8. Glucose is converted into glycogen and stored in the \_\_\_\_\_



[Watch Video Solution](#)

9. \_\_\_\_\_ changes proteins, proteoses and peptones into polypeptides.



[Watch Video Solution](#)

10. Lipase acts on fats to change them into fatty acids and \_\_\_\_\_



[Watch Video Solution](#)

Test Yourself Multiple Choice Questions Tick Mark V The Correct Choice

1. Which of the following help in the digestion of food?

- A. Nutrients
- B. Hormones
- C. Enzymes
- D. Saliva

**Answer:**



**Watch Video Solution**

2. Saliva contains an enzyme called.

- A. Amylase
- B. Trypsin
- C. Pepsin
- D. None of the above

**Answer:**



**Watch Video Solution**

**3. The front four teeth in each jaw of an adult human are**

- A. incisors
- B. premolars
- C. canines
- D. molars

**Answer:**



**Watch Video Solution**

**4. Finger-like projections called villi are present in**

- A. Stomach



B. Large intestine

C. Small intestine

D. Liver

**Answer:**



[Watch Video Solution](#)

5. Most of digestion takes place in

A. Stomach

B. Small intestine

C. Large intestine

D. Rectum

**Answer:**



[Watch Video Solution](#)

6. Absorption of food takes place in

- A. Small intestine
- B. Pancreas
- C. Large intestine
- D. Liver

**Answer:**



**Watch Video Solution**

7. Absorption of water takes place in

- A. Small intestine
- B. Large intestine
- C. Rectum
- D. Large intestine and rectum

**Answer:**

 [Watch Video Solution](#)

## Test Yourself Fill In The Blanks

1. Saliva is secreted by the .... ..... in the mouth cavity.

 [Watch Video Solution](#)

2. Number of molar teeth present in an human adult are .....

 [Watch Video Solution](#)

3. The teeth which help in biting the food in humans are the

 [Watch Video Solution](#)

4. Food is digested by chemicals called .....

 [Watch Video Solution](#)

5. Changing food to a usable form is called .....

 [Watch Video Solution](#)

6. The liver and ..... are found near the stomach.

 [Watch Video Solution](#)

7. The five steps in the process of nutrition are and \_\_\_\_

 [Watch Video Solution](#)

**Test Yourself Iv Complete The Following Table**

1. Name the causative agent of

malaria



[Watch Video Solution](#)

## Test Yourself V Answer The Following Table

1. Define the following term :

Ingestion



[Watch Video Solution](#)

2. Define the following term :

Absorption



[Watch Video Solution](#)

3. Define the following term :

Digestion

 [Watch Video Solution](#)

4. Define the following term :

Assimilation

 [Watch Video Solution](#)

5. Define the following term :

Alimentary canal

 [Watch Video Solution](#)

6. Define the following term :

digestive system





[Watch Video Solution](#)

7. Define the following:

Enzymes



[Watch Video Solution](#)

8. What are the organs constitute digestive system?



[Watch Video Solution](#)

9. Name different types of teeth and their number in an adult human.



[Watch Video Solution](#)

10. Name the following :

The digestive juices secreted by mouth, pancreas, stomach and small

intestine.



[Watch Video Solution](#)

11. Complete the following by giving the name of digestive juice/enzyme and the product formed in each case.

Protein : \_\_\_\_



[Watch Video Solution](#)

12. Complete the following by giving the name of digestive juice/enzyme and the product formed in each case.

Starch : \_\_\_\_

- (a) Saliva
- (b) Oesophagus
- (c) Tongue
- (d) Liver



[Watch Video Solution](#)



**13.** Describe the functions of the following:

eye



**Watch Video Solution**

**14.** Give the functions of different types of teeth in an adult human.



**Watch Video Solution**

**15.** Give a brief of enzymes or juices secreted by different parts of digestive system.



**Watch Video Solution**

**16.** Draw a well labelled diagram of Digestive system of humans



**Watch Video Solution**

17. Mention various steps in the process of digestion in human.



[Watch Video Solution](#)

## Review Questions Multiple Choice Questions

1. The teeth which help in tearing the food are the :

- A. Incisors
- B. Canines
- C. Premolars
- D. Molars

**Answer:**



[Watch Video Solution](#)

2. Last molar tooth in human beings is called :

- A. Adult tooth
- B. Wisdom tooth
- C. Child tooth
- D. Elder's tooth

**Answer:**



[Watch Video Solution](#)

3. The hardest substance in your body is :

- A. Dentine
- B. Bone
- C. Cement
- D. Enamel

**Answer:**



[Watch Video Solution](#)

**4. Saliva converts starch into :**

- A. Glucose
- B. Sucrose
- C. Maltose
- D. Lactose

**Answer:**



[Watch Video Solution](#)

**5. Proteins of the milk are converted into curd by the enzyme :**

- A. Trypsin

B. Rennin

C. Pepsin

D. Erepsin

**Answer:**



**Watch Video Solution**

**6. Bile juice is produced by :**

A. Stomach

B. Liver

C. Pancreas

D. Gall bladder

**Answer:**



**Watch Video Solution**

1. Molars help in cutting and tearing food.

 [Watch Video Solution](#)

2. Carbohydrates are digested into glucose.

 [Watch Video Solution](#)

3. Proteins are digested into glucose.

 [Watch Video Solution](#)

4. Wisdom tooth appears at the age of 5-6 years when the child starts going to school. State true or false.

 [Watch Video Solution](#)

5. The temporary set of teeth includes incisors, canines and premolars only.

 [Watch Video Solution](#)

6. The ducts from the salivary glands open into the duodenum.

 [Watch Video Solution](#)

7. Saliva changes starch into maltose.

 [Watch Video Solution](#)

**Review Questions Short Answer Questions Fill In The Blanks**

1. The teeth called ..... are a total of four in number on the sides of incisors.



[Watch Video Solution](#)

2. .... is a common opening of food pipe and wind pipe.



[Watch Video Solution](#)

3. Molars are meant for ..... The food.



[Watch Video Solution](#)

4. Incisors are used for ..... And ..... the food.



[Watch Video Solution](#)

5. The ..... Are used for tearing the food.



[Watch Video Solution](#)



6. Which of the following help in crushing and grinding food?

 [Watch Video Solution](#)

7. Name different types of teeth and their number in an adult human.

 [Watch Video Solution](#)

8. The human teeth appear in two sets, the first set is called .....  
Which consists of only ..... teeth.

 [Watch Video Solution](#)

Digestive enzymes    acts on    to form

9. (i) pepsin            2            3 and 4  
(ii) 1                fats            5

 [Watch Video Solution](#)

1. What are the end-products of the digestion of starch, proteins and fats respectively?

 [Watch Video Solution](#)

2. Where is protein digestion accomplished?

 [Watch Video Solution](#)

3. The organ into which the pancreatic juice and the bile juice are poured.....

 [Watch Video Solution](#)

4. Name the enzyme which digests:  
fats in the ileum



[Watch Video Solution](#)

5. The simplest form of carbohydrates.....



[Watch Video Solution](#)

6. The part of alimentary canal where water from the undigested food is absorbed.....



[Watch Video Solution](#)

7. What are the end-products of digestion of:

Proteins



[Watch Video Solution](#)

[Review Questions Short Answer Questions](#)

1. Identify and name the four types of teeth shown below and state their functions.



A



B



C



D



[Watch Video Solution](#)

Review Questions

1. Name the juice secreted by liver. What does it help in ?



[Watch Video Solution](#)

Review Questions

1. Bile is secreted by



[Watch Video Solution](#)

2. What is the main function of bile juice?



[Watch Video Solution](#)

3. Name the three enzymes found in the pancreatic juice and mention their functions.

(i) .....

(ii) .....

(iii) .....

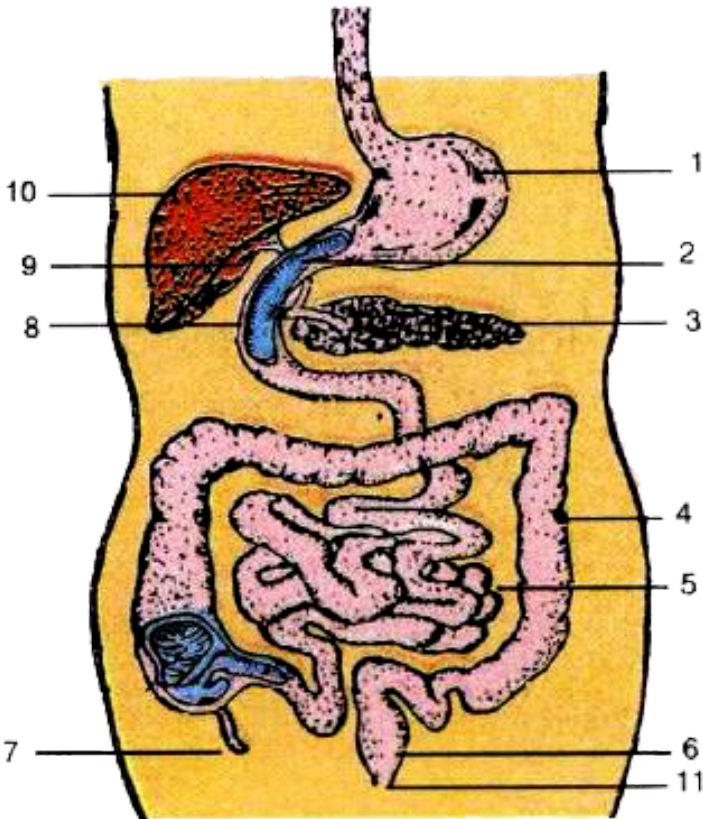


[Watch Video Solution](#)

4. Name the three regions of the large intestine. ....  
.....

 [Watch Video Solution](#)

5. Given alongside is the diagram of the human alimentary canal.

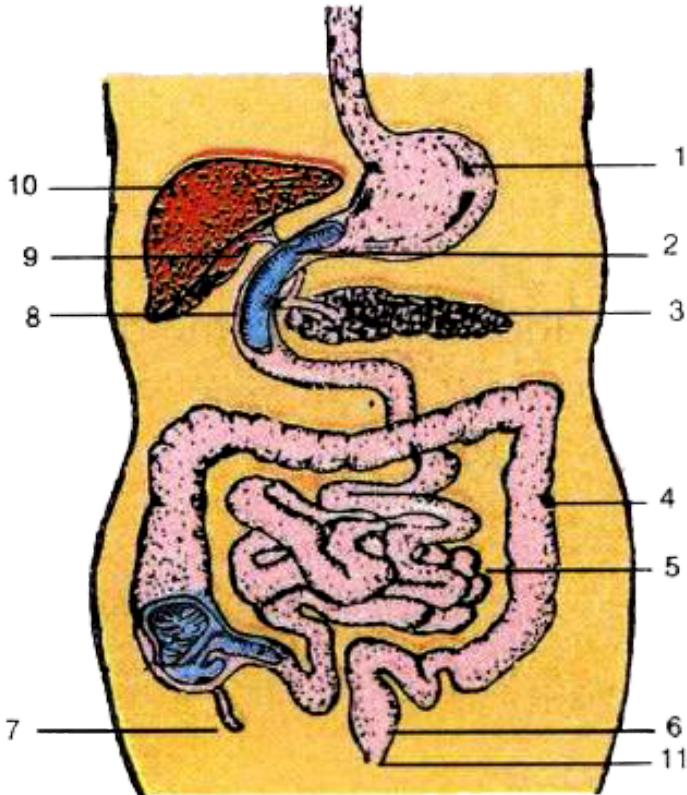


Name the parts 1-11 indicated by guidelines.

- 1..... 2..... 3.....
- 4..... 5..... 6.....
- 7..... 8..... 9.....
- 10..... 11.....

 [Watch Video Solution](#)

6. Given alongside is the diagram of the human alimentary canal.



State the function of the juice secreted by part 1.

.....

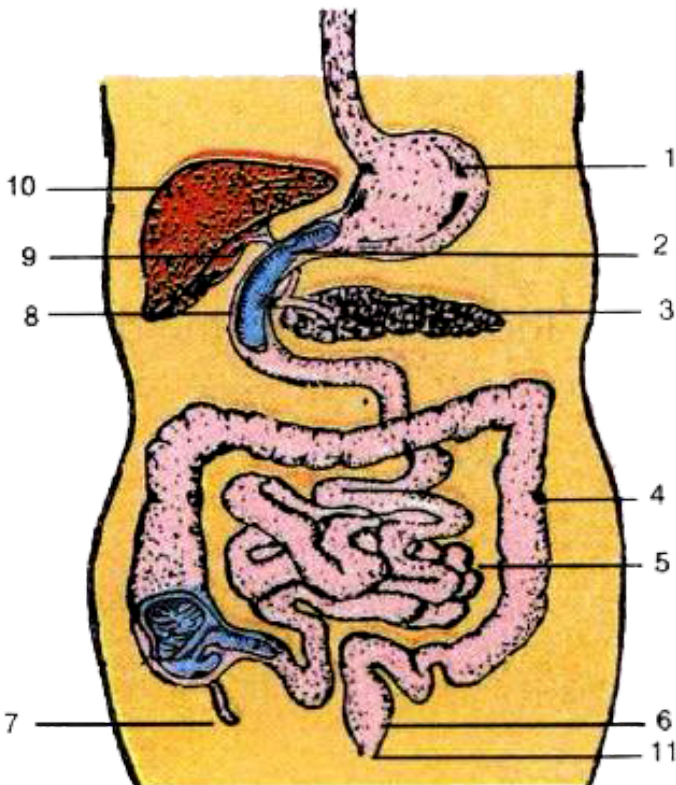
.....

.....



Watch Video Solution

7. Given alongside is the diagram of the human alimentary canal.





State the function of the three enzymes found in the juice secreted by part 3.

.....

.....

.....



[Watch Video Solution](#)

## Review Questions Long Answer Questions

1. Define the term nutrition.



[Watch Video Solution](#)

2. What is the role of liver and pancreas respectively in the digestion of food?



[Watch Video Solution](#)

**3. Name the following :**

The digestive juices secreted by mouth, pancreas, stomach and small intestine.

 [Watch Video Solution](#)

**4. Name the types of teeth present in humans.**

 [Watch Video Solution](#)

**5. Which of the following statements is/are incorrect?**

- (i) Absorption of simple sugar, alcohol, some water and medicines takes place in stomach.
- (ii) Maximum water absorption occurs in large intestine.
- (iii) Small intestine is the major site of digestion and absorption of food.
- (iv) Fatty acid and glycerol are absorbed by lacteals.
- (v) Nothing is absorbed in mouth and large intestine.

 [Watch Video Solution](#)

6. What do you mean by absorption of food?

 [Watch Video Solution](#)

7. Define the following terms : Egestion, digestion, assimilation.

 [Watch Video Solution](#)

8. Given below is a jumbled sequence of the different parts of the human alimentary canal Rewrite them in correct sequence.

Oesophagus, Large Intestine, Small Intestine, Pharynx.

 [Watch Video Solution](#)

9. In what form and in which part is excess glucose stored?

 [Watch Video Solution](#)

**10.** Define the following term :

Digestion



**Watch Video Solution**

**11.** State the four ways in which saliva is useful to us.



**Watch Video Solution**

**12.** Foods are classified into three groups on the basis of the functions they perform in our body. Name these three groups, and briefly state their functions. Also give two sources of each.



**Watch Video Solution**