



BIOLOGY

BOOKS - ICSE

DIGESTIVE SYSTEM IN HUMANS

Exercises Tick The Most Appropriate Answer

1. The process of taking in food through the mouth is called

A. digestion.

B. ingestion.

C. assimilation.

D. absorption.

Answer:



Watch Video Solution

2. Digestion begins in the

A. large intestine.

B. oesophagus.

C. stomach.

D. mouth.

Answer:



Watch Video Solution

3. Which of the following help in crushing and grinding food?

A. canines

B. molars

C. incisors

D. premolars

Answer:



Watch Video Solution

4. The fluid produced by the stomach is called

A. saliva.

B. gastric juice.

C. bile juice.

D. pancreatic juice.

Answer:



Watch Video Solution

5. Pepsin, a protein digesting enzyme, is present in the

A. oesophagus.

B. mouth.

C. stomach.

D. duodenum.

Answer:



Watch Video Solution

6. Food is absorbed in the

A. mouth

B. small intestine.

C. large intestine.

D. liver.

Answer:



Watch Video Solution

7. No digestion takes place in the

A. mouth and pharynx.

B. pharynx and oesophagus.

C. oesophagus and stomach.

D. pharynx and small intestine.

Answer:



Watch Video Solution

8. Fats are changed into fatty acids and glycerol by the action of

A. lipase.

B. bile.

C. lipids

D. trypsin.

Answer:



Watch Video Solution

9. Glucose is stored in the form of

A. galactose.

B. maltose.

C. glycerin.

D. glycogen.

Answer:



Watch Video Solution

Exercises Complete The Following Reactions

1. proteins, proteases and _____ $\xrightarrow{\text{trypsin}}$ _____



Watch Video Solution

2. Chyme $\xrightarrow{\text{bile}}$ _____



Watch Video Solution

3. Maltose $\xrightarrow{\text{maltase}}$ _____



Watch Video Solution

4. Sucrose $\xrightarrow{\text{sucrase}}$ _____ + _____



Watch Video Solution

5. Fats $\xrightarrow{\text{lipase}}$ _____ + _____



Watch Video Solution

Exercises True Or False

1. The process of taking in food is called assimilation.



[Watch Video Solution](#)

2. Saliva contains lipase which digests carbohydrates.



[Watch Video Solution](#)

3. Stomach walls produce acid and enzymes which help to digest carbohydrates.



[Watch Video Solution](#)

4. The pancreas secretes bile juice.



[Watch Video Solution](#)

5. State true or false. Water is absorbed in the large intestine.



[Watch Video Solution](#)

Exercises Differentiate Between

1. Digestion of fats takes place by_____



[Watch Video Solution](#)

2. mechanical digestion and chemical digestion.



[Watch Video Solution](#)

3. Distinguish between small intestine and large intestine.



Watch Video Solution

4. Distinguish between digestion and assimilation.



Watch Video Solution

Exercises Find The Odd One Out Give Reasons For Your Choice

1. oesophagus, stomach, small intestine, liver



Watch Video Solution

2. Find the odd one out.

canines, incisors, saliva, premolars



Watch Video Solution

3. salivary amylase, pepsin, trypsin, erepsin



Watch Video Solution

4. Maltase, lactase, aminopeptidase, sucrase



[Watch Video Solution](#)

Exercises Answer The Following In Short

1. How do teeth help in digestion?



[Watch Video Solution](#)

2. What is dental plaque?



Watch Video Solution

3. What is emulsification of fats?



Watch Video Solution

4. Name the enzymes found in pancreatic juice.



Watch Video Solution

Exercises Answer The Following In Detail

1. What is meant by digestion? How does it differ from nutrition?



[Watch Video Solution](#)

2. Name different types of teeth and their number in an adult human.



[Watch Video Solution](#)

3. Liver does not secrete any enzymes yet it helps in digestion. How?



Watch Video Solution

4. What happens to the nutrients absorbed in the blood stream from the small intestine?



Watch Video Solution

5. How do villi help in absorption? Show with a diagram.



Watch Video Solution

6. You ate bread in the morning. Starting from the mouth, explain how it was digested.



Watch Video Solution

1. Number the following processes in their correct sequence of occurrence during digestion.

peristalsis ,tongue pushes the food ,grinding and mixing saliva ,cutting and tearing of food



[Watch Video Solution](#)

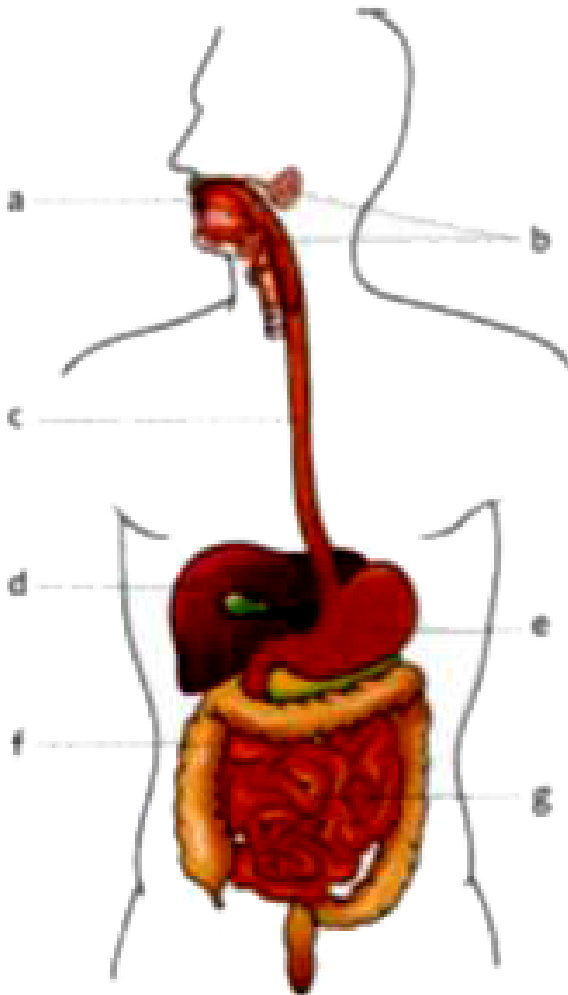
Exercises You Have Eaten Food Containing Fats And Proteins Now Fill In The Blanks Numbered 1 12 To Complete Some Stages Of Digestion Of The Food

1. In the mouth grinding of food is brought about by __1__ and __2__. The saliva contains __3__ enzymes. The food then passes to stomach through pharynx and __4__. Peristalsis of food is caused by __5__. In the stomach pepsin acts on proteins to change them into __6__ and __7__. Bile is secreted by __8__. In duodenum, pancreatic juice has __9__ and __10__ enzymes. Lipase acts on fats and converts them into __11__ and __12__.



Watch Video Solution

Exercises Given Is The Diagram Of Human Digestive System

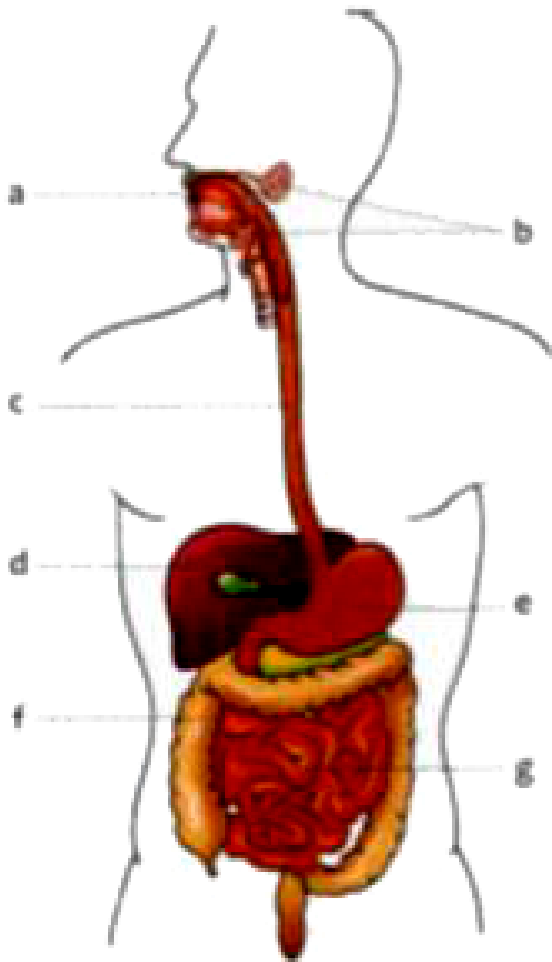


1.

Name the parts labelled a to g.



[Watch Video Solution](#)



2.

Name the parts where

A. hydrochloric acid is added to food.

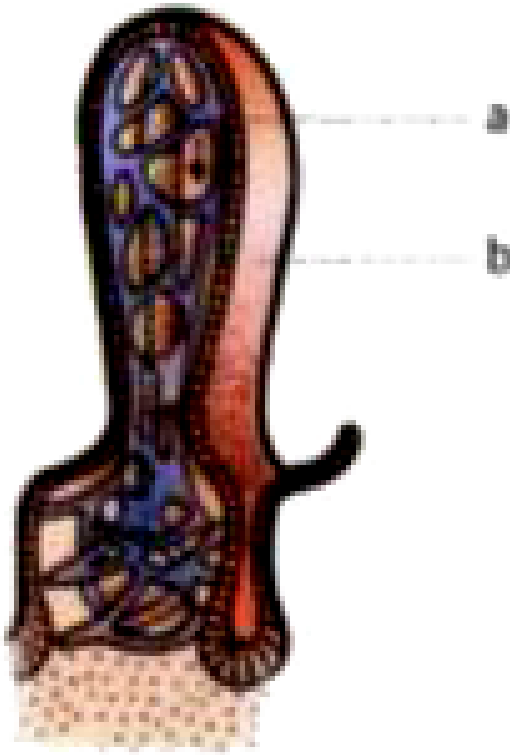
B. bile is produced.

C. water is absorbed.



[Watch Video Solution](#)

Exercises Given Is A Diagram Showing The Internal Structure Of A Part Of The Alimentary Canal



1.

Identify the part.



[Watch Video Solution](#)

2. Why does tobacco stimulate secretion of adrenaline?



Watch Video Solution

3. Name two industrially important enzymes.



Watch Video Solution

Exercises Draw Labelled Diagrams Of The Following

1. Draw a well labelled diagram of Digestive system of humans



[Watch Video Solution](#)

2. Draw Structure of a tooth



[Watch Video Solution](#)

Think And Answer

1. All teeth in our mouth are not alike. Give reason.



Watch Video Solution

2. Why are villi present only in the small intestine?



Watch Video Solution

Check Your Progress Fill In The Blanks

1. Milk teeth are also called temporary or _____ teeth.



Watch Video Solution

2. Name different types of teeth and their number in an adult human.



Watch Video Solution

3. Food passes from the _____ to the oesophagus.



Watch Video Solution

4. _____ is a J-shaped muscular organ.



Watch Video Solution

5. _____ is a long, coiled tube that lies folded in the abdomen.



[Watch Video Solution](#)

6. Saliva contains an enzyme called _____



[Watch Video Solution](#)

7. _____ is made in the liver and stored in the gall bladder.



[Watch Video Solution](#)

8. Glucose is converted into glycogen and stored in the _____



[Watch Video Solution](#)

9. _____ changes proteins, proteases and peptones into polypeptides.



[Watch Video Solution](#)

10. Lipase acts on fats to change them into fatty acids and _____



Watch Video Solution