



BIOLOGY

BOOKS - ICSE

TEST PAPER 2

Tick The Most Appropriate Answer

1. Oxidation of food that takes place in the presence of oxygen is called

- A. aerobic respiration.
- B. anaerobic respiration.
- C. cellular respiration.
- D. none of these

Answer:



Watch Video Solution

2. These are biconcave, disc-shaped cells of the blood.

A. platelets

B. WBCS

C. RBCS

D. none of these

Answer:



Watch Video Solution

3. The diseases that are present from birth are called

- A. air-borne diseases.
- B. congenital diseases.
- C. acquired diseases.
- D. none of these

Answer:



Watch Video Solution

4. The ability of an organism to change for better adjustment with the environment is

A. habitat.

B. adaptation.

C. acclimatisation.

D. evaporation.

Answer:



Watch Video Solution

5. Animals that can fly in the air such as birds and bats are

A. arboreal animals.

B. aerial animals.

C. terrestrial animals.

D. land animals.

Answer:



Watch Video Solution

Write True Or False Correct The False Statements

1. The path through which the air travels to the lungs is called the respiratory tract.



[Watch Video Solution](#)

2. Contraction of auricles and ventricles makes a sound called heartbeat.



[Watch Video Solution](#)

3. What are pathogens?



[Watch Video Solution](#)

4. The plants that live in water are called xerophytes.



[Watch Video Solution](#)

5. The parenchyma tissues provide buoyancy and flexibility to hydrophytes.



[Watch Video Solution](#)

Differentiate Between

1. Anaerobic respiration and Aerobic respiration



[Watch Video Solution](#)

2. red blood cells and white blood cells.



[Watch Video Solution](#)

3. acquired disease and congenital disease.



Watch Video Solution

4. composting and vermicomposting.



Watch Video Solution

5. Symptoms of kwashiorkor and symptoms of marasmus.



Watch Video Solution

6. Differentiate between hydrophytes and mesophytes.



[Watch Video Solution](#)

Give Reasons For The Following

1. The colour of the red blood cells is due to



[Watch Video Solution](#)

2. WBCs easily reach the site of an infection.



[Watch Video Solution](#)

Answer The Following In Detail

1. Where does exchange of gases takes place?



[Watch Video Solution](#)

2. What is meant by double circulation ?



[Watch Video Solution](#)

3. Blood pressure is measured by



[Watch Video Solution](#)

4. Write about any three communicable diseases, their causes, transmission, effects and symptoms in a tabular form.



[Watch Video Solution](#)

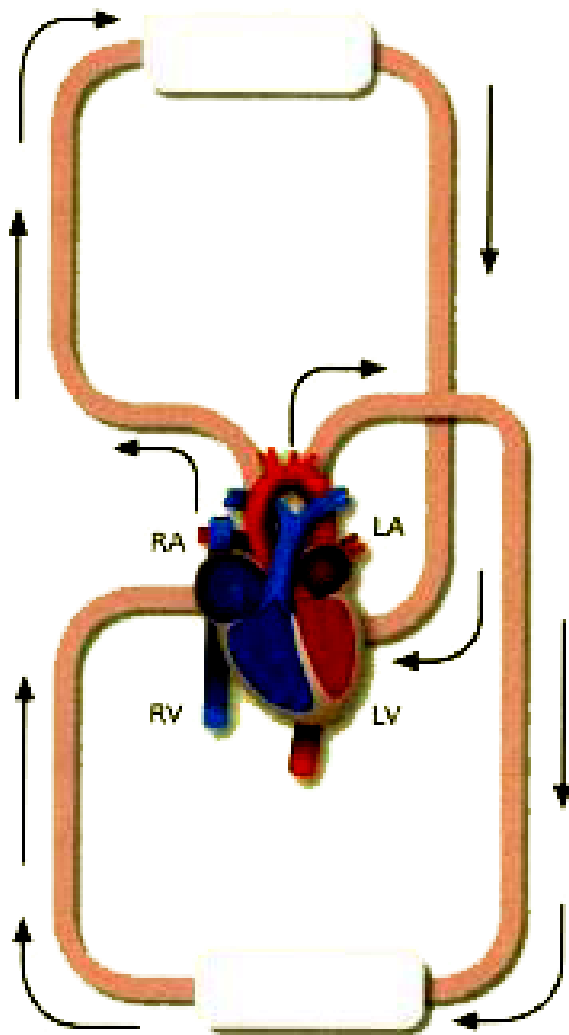
5. Mention the adaptations shown by aquatic animals.



[Watch Video Solution](#)

Label The Schematic Diagram

1. Label the schematic diagram showing circulation of blood in the body.



[Watch Video Solution](#)