



CHEMISTRY

BOOKS - HT Olympiad Previous Year Paper

NSO QUESTION PAPER 2020-21 SET A

Science

1. Match column 1 (method of separation) with column II (property of the components) and

select the correct option from the given codes.

	Column I		Column II
P.	Sedimentation	(i)	Solubility
Q.	Sieving	(ii)	Weight of particles
R.	Winnowing	(iii)	Size of particles
S.	Separating funnel	(iv)	Miscibility

	P	Q	R	S
A.	(iv)	(ii)	(i)	(iii)
B.	(i)	(iii)	(ii)	(iv)
C.	(iii)	(i)	(ii)	(iv)
D.	(ii)	(iii)	(iv)	(i)



[Watch Video Solution](#)

2. Read the given information and identify P, Q, R and S.

P: Has definite shape and volume

Q: Undergoes sublimation

R: Has definite volume but no definite shape

S: Does not have definite shape and definite volume

A.

<i>P</i>	<i>Q</i>	<i>R</i>	<i>S</i>
Rubber ball	Camphor	Air	Milk

B.

<i>P</i>	<i>Q</i>	<i>R</i>	<i>S</i>
Glass bowl	Common salt	Honey	Oxygen

C.

<i>P</i>	<i>Q</i>	<i>R</i>	<i>S</i>
Brick	Naphthalene	Milk	Air

D.

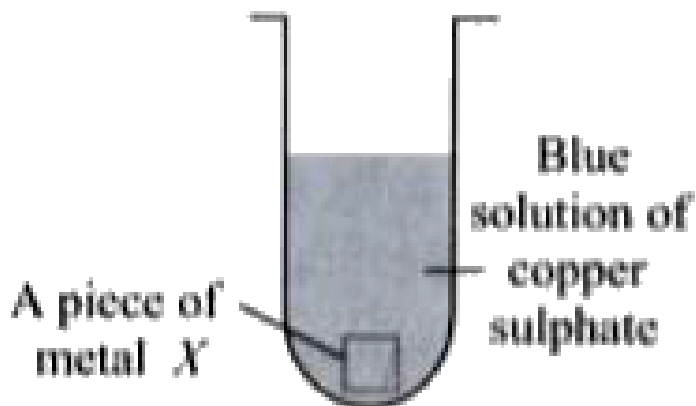
<i>P</i>	<i>Q</i>	<i>R</i>	<i>S</i>
Air	Sugar	Honey	Milk

Answer: C



Watch Video Solution

3. A metallic piece (X) is dropped into copper sulphate solution. After some time, the blue colour of the solution changes to green.



Metal X and the change which has occurred are respectively

A. Aluminium and physical, reversible change

B. Magnesium and physical, irreversible change

C. Iron and chemical, reversible change

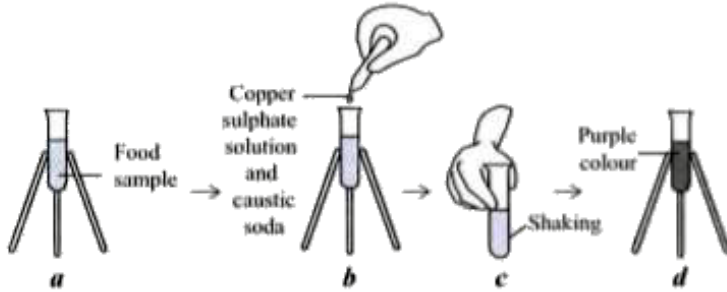
D. Iron and chemical, irreversible change.

Answer: D



Watch Video Solution

4. Identify the test shown in the given figures and select the correct statement regarding it.



- A. This test can be used to check presence of starch in a food sample.
- B. This test can be used to check presence of sugar in a food sample
- C. This test can be used to check presence of protein in a food sample
- D. This test can be used to check presence of fatty acids in a food sample.

Answer: C



Watch Video Solution

5. Which of the following statements regarding air is incorrect?

A. Air contains dust particles and water vapour.

B. Air neither has fixed shape nor has fixed volume.

C. Air has mass and occupies space.

D. Air is incompressible.

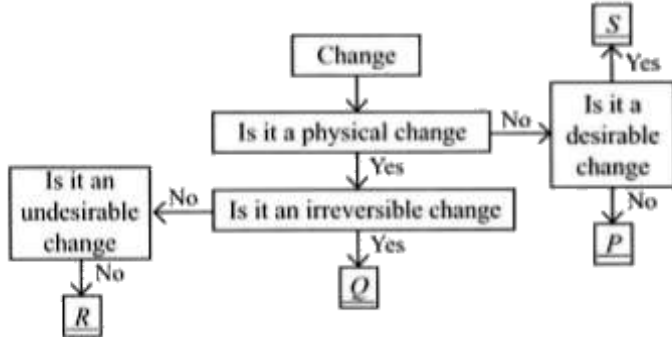
Answer: D



Watch Video Solution

Achievers Section

1. Study the given flow chart and fill in the blanks by selecting an appropriate option.



- | | P | Q | R | S |
|----|-------------------|--------------------------|--------------------------|------------------|
| A. | Souring of milk | Motion of swing | Tearing of paper | Spoilage of food |
| B. | Breaking of glass | Occurrence of earthquake | Rusting of iron | Evaporation |
| C. | Rusting of iron | Shredding of paper | Glowing of filament bulb | Curdling of milk |
| D. | Condensation | Cutting of trees | Volcanic eruption | Evaporation |



[View Text Solution](#)