



PHYSICS

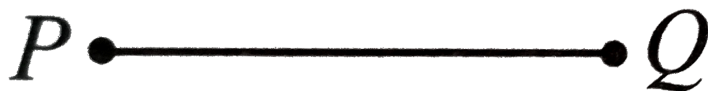
BOOKS - MTG PHYSICS (ENGLISH)

CURRENT ELECTRICITY

Electric Current

1. Ten million electrons pass from point P to point Q in one micro second.

The current and its direction is



A. $1.6 \times 10^{-14} A$, from point P to point Q

B. $3.2 \times 10^{-14} A$ from point P to point Q

C. $1.6 \times 10^{-6} A$ From point Q to P

D. $3.2 \times 10^{-12} \text{ A}$ from point Q to point P

Answer: C



[Watch Video Solution](#)

2.1 ampere current is equivalent to

A. 6.25×10^{-18} electrons s^{-1}

B. 2.25×10^{-18} electrons s^{-1}

C. 6.25×10^{14} electrons s^{-1}

D. 2.25×10^{14} electrons s^{-1}

Answer: A



[Watch Video Solution](#)

3. A current in a wire is given by the equation, . $I = 2t^2 - 3t + 1$, the charge through cross section of : wire in time interval $t=3s$ to $t=5s$ is

A. 32.33C

B. 43.34C

C. 45.5C

D. 42C

Answer: B



[Watch Video Solution](#)

4. The current in a wire varies with time according to the equation $I=4+2t$, where I is in ampere and t is in sec. the quantity of charge which has passed through a cross-section of the wire during the time $t=2$ sec to $t=6$ sec will be

A. 40C

B. 48C

C. 38C

D. 43C

Answer: B



[Watch Video Solution](#)

5. In an atom electrons revolves around the nucleus along a path of radius 0.72\AA ... making 9.4×10^{18} revolution per second. The equivalent current is ($e = 1.6 \times 10^{-19}C$)

A. 1.2A

B. 1.5A

C. 1.4A

D. 1.8A

Answer: B



[Watch Video Solution](#)

Electric Current In Conductors

1. A charge is moving across a junction, then

A. momentum will be conserved

B. momentum will not be conserved

C. at some places momentum be conserved and at other places
momentum will not be conserved

D. none of these.

Answer: D



[Watch Video Solution](#)

2. The direction of the flow of current through electric circuit is

- A. from low potential to high potential.
- B. from high potential to low potential.
- C. does not depend upon potential value
- D. current cannot flow through circuit.

Answer: B



[Watch Video Solution](#)

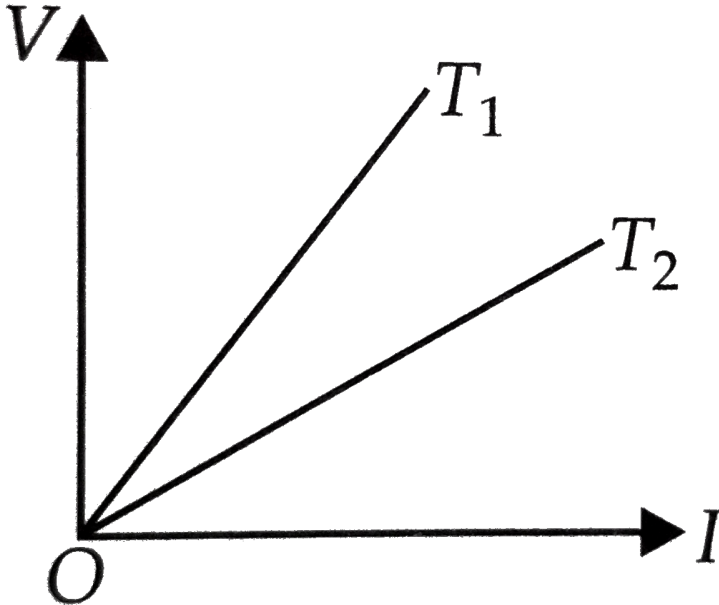
Ohm S Law

1. The electrical resistance of a conductor depends upon
 - A. size of conductor
 - B. temperature of conductor
 - C. geometry of conductor
 - D. all of these

Answer: D

 Watch Video Solution

2. The voltage V and current I v graphs for a conductor at two different temperatures T_1 and T_2 are shown in the figure. The relation between T_1 and T_2 is



A. $T_1 > T_2$

B. $T_1 < T_2$

C. $T_1 = T_2$

D. $T_1 = \frac{1}{T_2}$

Answer: A



Watch Video Solution

3. A wire of resistance 4Ω is used to wind a coil of radius 7 cm. The wire has a diameter of 1.4 mm and the specific resistance of its material is $2 \times 10^{-7}\Omega m$. Find the number of turns in the coil.

A. 50

B. 40

C. 60

D. 70

Answer: D



[Watch Video Solution](#)

4. A cylindrical rod is reformed to half of its original length keeping volume constant. If its resistance before this change were R , then the resistance after reformation of rod will be

A. R

B. $R/4$

C. $3R/4$

D. $R/2$

Answer: B



[Watch Video Solution](#)

5. A wire with 15ohm resistance is stretched by one tenth of its original length and volume of wire is kept constant. Then its resistance will be

A. 15.18Ω

B. 81.15Ω

C. 51.18Ω

D. 18.15Ω

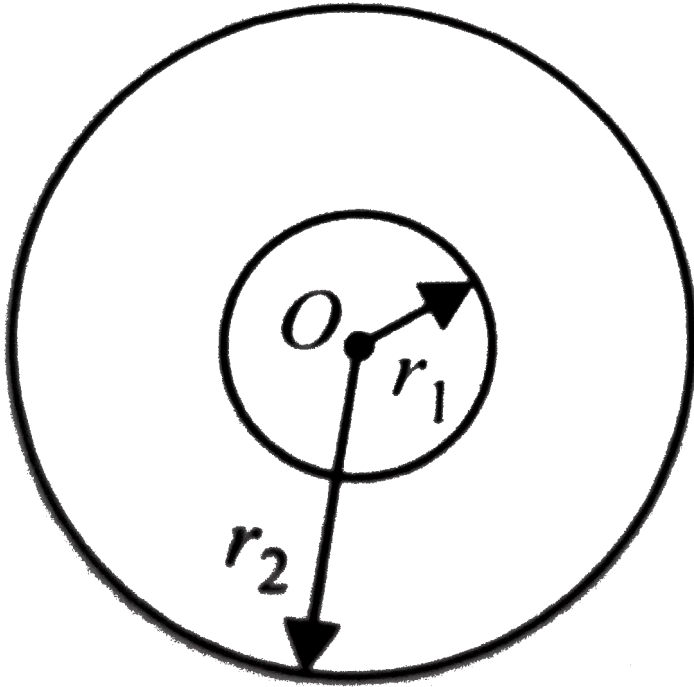
Answer: D



Watch Video Solution

6. Space between two concentric spheres of radii r_1 and r_2 such that $r_1 < r_2$ is filled with a material of resistivity ρ . Find the resistance

between inner and outer surface of the material



A. $\frac{r_1}{r_2} \frac{p}{2}$

B. $\frac{r_2 - r_1}{r_1 r_2} \frac{p}{4\pi}$

C. $\frac{r_1 r_2}{r_2 - r_1} \frac{p}{4\pi}$

D. none of these.

Answer: B



Watch Video Solution

7. The current density varies radial distance r as $J = ar^2$, in a cylindrical wire of radius R . The current passing through the wire between radial distance $R/3$ and $R/2$ is,

A. $\frac{65\pi a R^4}{2592}$

B. $\frac{25\pi a R^4}{72}$

C. $\frac{65\pi a^2 R^3}{2938}$

D. $\frac{81\pi a^2 R^4}{144}$

Answer: A



[Watch Video Solution](#)

Drift Of Electrons

1. For which of the following dependences of drift velocity, v_d on electric field E , Ohm's law obeyed?

A. $v_d \propto E$

B. $v_d \propto E^2$

C. $v_d \propto \sqrt{E}$

D. $v_d \propto \frac{1}{\sqrt{E}}$

Answer: A

 [Watch Video Solution](#)

2. A charged particle having drift velocity of $7.5 \times 10^{-4} \text{ms}^{-1}$ in electric field of $3 \times 10^{-10} \text{Vm}^{-1}$ mobility is

A. $6.5 \times 10^6 \text{m}^2 \text{V}^{-1} \text{s}^{-1}$

B. $2.5 \times 10^6 \text{m}^2 \text{V}^{-1} \text{s}^{-1}$

C. $2.5 \times 10^4 \text{m}^2 \text{V}^{-1} \text{s}^{-1}$

D. $6.5 \times 10^4 \text{m}^2 \text{V}^{-1} \text{s}^{-1}$

Answer: B

Limitations Of Ohm S Law

1. Match the Column I with Column II.

Column I		Column II	
(A)	Ohm's law is applicable to	(p)	metals
(B)	Ohm's law is not applicable to	(q)	greater resistivity
(C)	alloys have	(r)	diodes, electrolytes, semiconductors

A. A-r, B-q, C-p

B. A-p, B-r, C-q

C. A-r, B-p, C-q

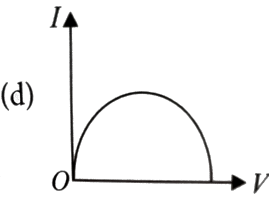
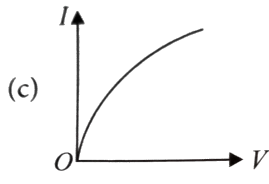
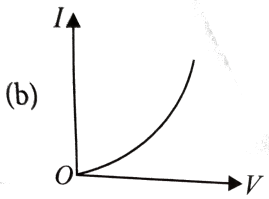
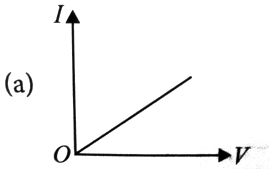
D. A-q, B-r, C-p

Answer: B



Watch Video Solution

2. Which of the following I-V graph represents ohmic conductors?

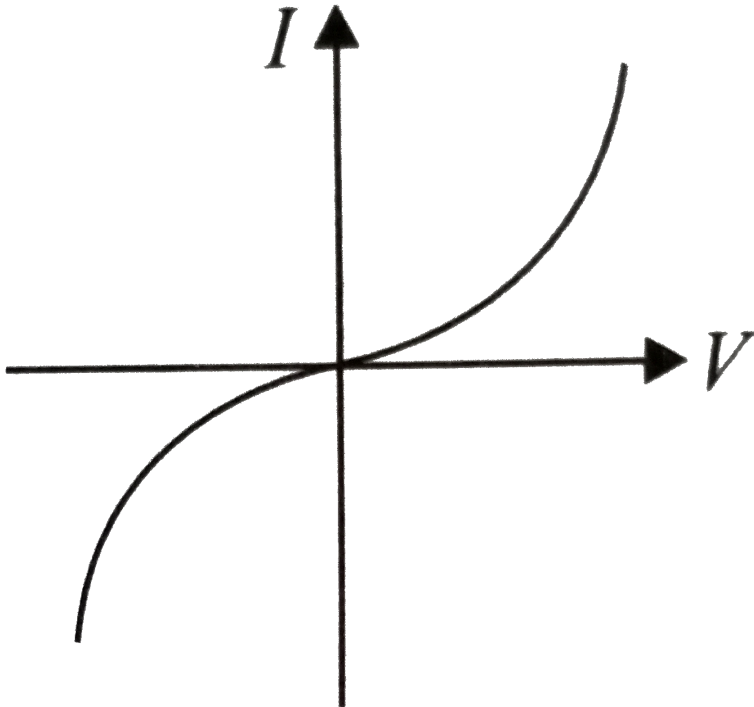


Answer: A



Watch Video Solution

3. The I-V characteristics shown in the figure represents



A. ohmic conductors

B. non-ohmic conductors

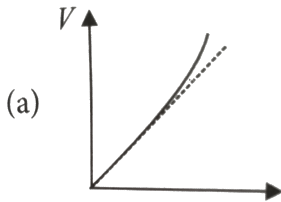
C. insulators

D. superconductors

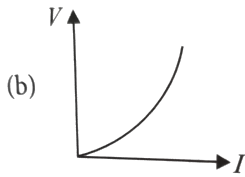
Answer: B

 Watch Video Solution

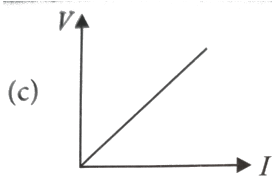
4. Which of the following is correct for V-I graph of a good conductor?



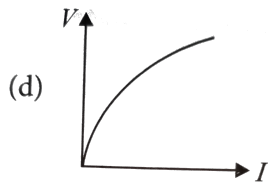
A.



B.



C.



D.

Answer: A



[Watch Video Solution](#)

Resistivity

1. Range of resistivity for metals is

A. $10^{-6}\Omega m$ to $10^{-4}\Omega m$

B. $10^{-7}\Omega m$ to $10^{-5}\Omega m$

C. $10^{-8}\Omega m$ to $10^{-6}\Omega m$

D. $10^{-9}\Omega m$ to $10^{-7}\Omega m$

Answer: C



[Watch Video Solution](#)

2. Wire bound resistors are made by

A. winding the wires of an alloy viz, Cu,Al,Ag

B. winding the wires of an alloy viz, Si,Tu,Fe

C. winding the wires of an alloy viz, Ge,Au,Gr

D. winding the wires of an alloy viz,magnesium, constantan, nichrome

Answer: D



[Watch Video Solution](#)

3. The resistivity of alloy manganin is

A. Nearly independent of temperature

B. Increases rapidly with increase in temperature

C. Decrease with increase in temperature

D. Increase rapidly with decrease in temperature

Answer: A



[Watch Video Solution](#)

4. Arrange the following materials in increasing order of their resistivity,

Nichrome, Copper, Germanium, Silicon

A. Copper < Nichrome < Germanium < Silicon

B. Germanium < Copper < Nichrome < Silicon

C. Nichrome < Copper < Germanium < Silicon

D. Silicon < Nichrome < Germanium < Copper

Answer: A



[Watch Video Solution](#)

5. What is the order of magnitude of the resistance of a (dry) human body?

A. 10Ω

B. $10k\Omega$

C. $10M\Omega$

D. $10\mu\Omega$

Answer: B



[Watch Video Solution](#)

6. Two copper wire of length l and $2l$ have radii, r and $2r$ respectively. What is the ratio of their specific resistance.?

A. 1:2

B. 2:1

C. 1:1

D. 1:3

Answer: C



[Watch Video Solution](#)

7. A resistor is marked with the rings coloured brown, black, green, and gold. The resistance in ohm is

A. $(3.5 \times 10^5 \pm 5 \%)$

B. $(1.10 \times 10^5 \pm 10 \%)$

C. $(8 \times 10^6 \pm 5 \%)$

D. $(1 \times 10^6 \pm 5 \%)$

Answer: D



[Watch Video Solution](#)

Temperature Dependence Of Resistivity

1. The resistance of a heating is 99Ω at room temperature. What is the temperature of the element if the resistance is found to be 116Ω

(Temperature coefficient of the material of the resistor is

$1.7 \times 10^{-4} \text{ } ^\circ\text{C}^{-1}$)

A. $999.9^{\circ}C$

B. $1005.3^{\circ}C$

C. $1020.2^{\circ}C$

D. $1037.1^{\circ}C$

Answer: D

 [Watch Video Solution](#)

2. The resistance of the wire in the platinum resistance thermometer at ice point is 5Ω and at steam point is 5.25Ω . When the thermometer is inserted in an unknown hot bath its resistance is found to be 5.5Ω . The temperature of the hot bath is

A. $100^{\circ}C$

B. $200^{\circ}C$

C. $300^{\circ}C$

D. $350^{\circ}C$

Answer: B



[Watch Video Solution](#)

3. The resistance of wire in a heater at room temperature is $65\ \Omega$. When the heater is connected to a 220V supply the current settles after a few seconds to 2.8A . What is the steady temperature of the wire. (Temperature coefficient of resistance $\alpha = 1.70 \times 10^{-4}\ \text{(^{\circ}C)^{-1}}$)

A. 955°C

B. 1055°C

C. 1155°C

D. 1258°C

Answer: D



[Watch Video Solution](#)

4. A wire has a resistance of 2.5Ω at $28^\circ C$ and a resistance of 2.9Ω at $100^\circ C$. The temperature coefficient of resistivity of material of the wire is

A. $1.06 \times 10^{-3} \text{ } ^\circ C^{-1}$

B. $3.5 \times 10^{-2} \text{ } ^\circ C^{-1}$

C. $2.22 \times 10^{-3} \text{ } ^\circ C^{-1}$

D. $9.95 \times 10^{-2} \text{ } ^\circ C^{-1}$

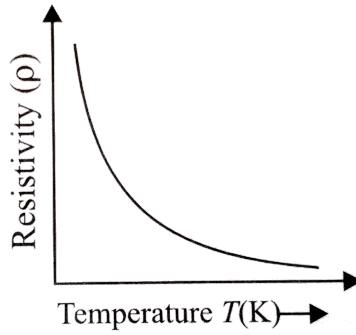
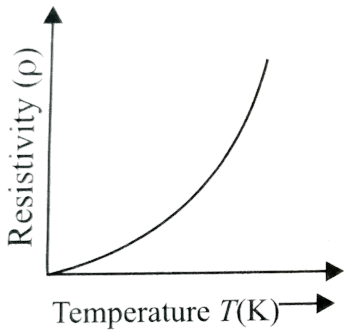
Answer: C



[Watch Video Solution](#)

5. Figure (a) and figure (b) both are showing the variation of resistivity (ρ) with temperature (T) for some materials. Identify the types of these

materials.



- A. Conductor and semiconductor
- B. Conductor and Insulator
- C. Insulator and semiconductor
- D. Both are conductor

Answer: A



Watch Video Solution

6. Why are constantan and manganin used for making standard resistances ?

- A. temperature independent resistivity
- B. very weak temperature dependent resistivity
- C. strong dependence of resistivity with temperature
- D. mechanical strength

Answer: B

 [Watch Video Solution](#)

7. With increase in temperature of the conductivity of

- A. metals increases and of semiconductor decreases.
- B. semiconductors increases and of metals decreases.
- C. in both metals and semiconductors increases
- D. in both metals and semiconductor decreases

Answer: B

 [Watch Video Solution](#)

Electrical Energy Power

1. With increase in temperature of the conductivity of

- A. metals increases and of semiconductor decreases.
- B. semiconductors increases and of metals decreases.
- C. in both metals and semiconductors increases
- D. in both metals and semiconductor decreases

Answer: B



[Watch Video Solution](#)

2. A boy has two spare light bulbs in his drawer. One is marked 220V and 100W and the other is marked 240V and 60W. He tries to decide which of the following assertions are correct?

- A. The 60W light bulb has more resistance and therefore burns less brightly
- B. The 60W light bulb has less resistance and therefore burns less brightly
- C. The 100W light bulb has more resistance and therefore burns more brightly
- D. The 100W light bulb has less resistance and therefore burns more brightly

Answer: A



[Watch Video Solution](#)

3. An electric heater is connected to the voltage supply. After few seconds Current gets its steady value then its initial current will be

- A. equal to its steady current

B. slightly higher than its steady current

C. slightly less than its steady current

D. zero

Answer: B



[Watch Video Solution](#)

4. If voltage across a bulb rated 220 volt-100 watt drops by 2.5 % of its value, the percentage of the rated value by which the power would decrease is

A. 0.2

B. 0.025

C. 0.05

D. 0.1

Answer: C



Watch Video Solution

5. Four wires of the same diameter are connected, in turn, between two points maintained at a constant potential difference, Their resistivities and lengths are, ρ and L (wire 1), 1.2ρ and $1.2L$ (wire 2), 0.9ρ and $0.9L$ (wire 3) and ρ and L (wire 4). Rank the wires according to the rates at which energy is dissipated as heat, greatest first,

A. $4 > 3 > 1 > 2$

B. $4 > 2 > 1 > 3$

C. $1 > 2 > 3 > 4$

D. $3 > 1 > 2 > 4$

Answer: D



Watch Video Solution

6. A heater coil is rated $100\text{W}, 200\text{V}$. It is cut into two identical parts. Both parts are connected together in parallel, to the same sources of 200V . Calculate the energy liberated per second in the new combination.

A. 100J

B. 200J

C. 300J

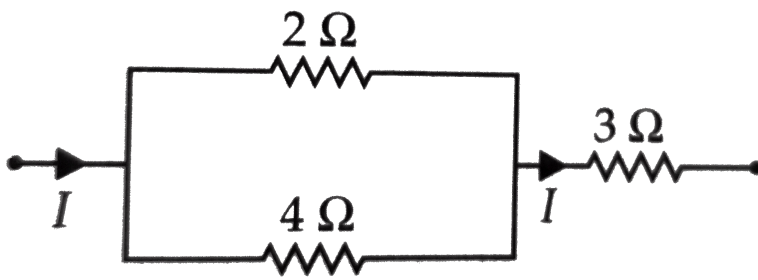
D. 400J

Answer: D



[Watch Video Solution](#)

7. In the circuit shown in figure heat developed across 2Ω , 4Ω and 3Ω resistances are in the ratio



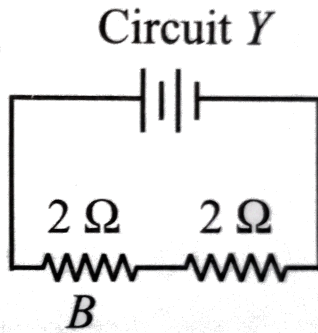
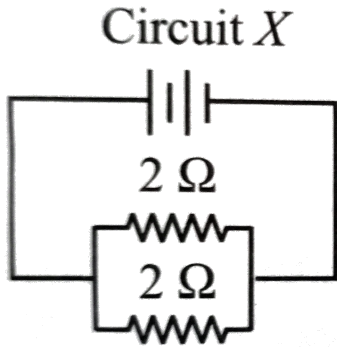
- A. 2 : 4 : 3
- B. 8 : 4 : 27
- C. 4 : 8 : 27
- D. 8 : 4 : 27

Answer: D

 [Watch Video Solution](#)

8. Two $2\ \Omega$ resistances are connected in parallel in the circuit X and in series in circuit Y. The batteries in the two circuits are identical and have zero internal resistance. Assume that the energy transferred to resistor A in circuit X within a certain time is W . The energy transferred to resistor B

in circuit Y in the same time will be



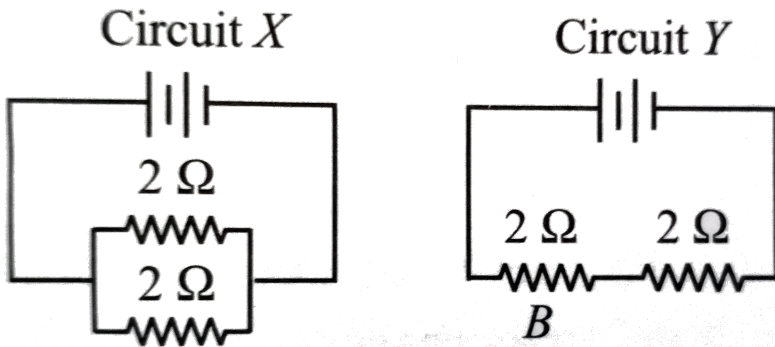
- A. $\frac{1}{4}W$
- B. $\frac{1}{2}W$
- C. $2W$
- D. $4W$

Answer: A

 [Watch Video Solution](#)

Combined Of Resistors

1. Two 2Ω resistances are connected in parallel in the circuit X and in series in circuit Y. The batteries in the two circuits are identical and have zero internal resistance. Assume that the energy transferred to resistor A in circuit X within a certain time is W . The energy transferred to resistor B in circuit Y in the same time will be



A. $\frac{1}{4}W$

B. $\frac{1}{2}W$

C. $2W$

D. $4W$

Answer: A



Watch Video Solution

2. In the series combination of two or more than two resistances

- A. the current through each resistance is same
- B. the voltage through each resistance is same
- C. neither current nor voltage through each resistance is same
- D. both current and voltage through each resistance are same

Answer: A



[Watch Video Solution](#)

3. Match the Column I with Column II.

Column I		Column II	
(A)	Smaller the resistance greater the current in a circuit	(p)	If the same voltage is applied across a resistance
(B)	Greater or smaller the resistance the current is same	(q)	If the same current is passed
(C)	Greater the resistance smaller the power	(r)	When resistances are connected in series
(D)	Greater the resistance greater the power	(s)	When resistances are connected in parallel

A. A -r, B -p, C -q, D -s

B. A -p, B -r, C -q, D -s

C. A -p, B -r, C -q, D -s

D. A -p, B -r, C -q, D -s

Answer: D



Watch Video Solution

4. Combine three resistors 5Ω , 4.5Ω and 3Ω in such a way that the total resistance of this combination maximum

- A. 12.5Ω
- B. 13.5Ω
- C. 14.5Ω
- D. 16.5Ω

Answer: A



[Watch Video Solution](#)

5. The total resistance in the parallel combination of three resistances 9Ω , 7Ω and 5Ω

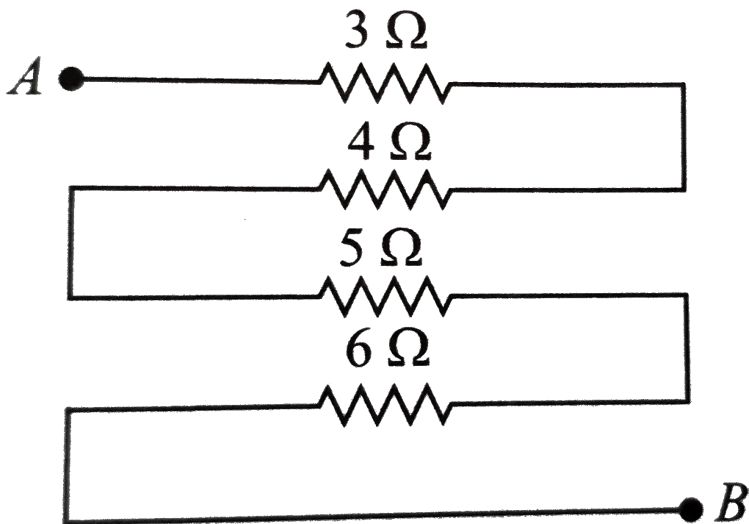
- A. 1.22Ω
- B. 2.29Ω
- C. 4.22Ω

D. 2.02Ω

Answer: D

 Watch Video Solution

6. Equivalent resistance (in ohm) of the given network is



A. 28

B. 18

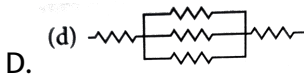
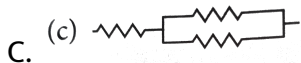
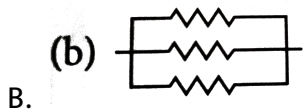
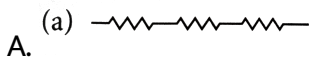
C. 26

D. 25

Answer: B

 Watch Video Solution

7. Which arrangement of 3Ω resistors will give a total resistance of 7Ω ?



Answer: D

 Watch Video Solution

8. The equivalent resistance of series combination of four equal resistors is S . If they are joined in parallel, the total resistance is P . The relation between S and P is given by $S = nP$. Then the minimum possible value of n is

A. 12

B. 14

C. 16

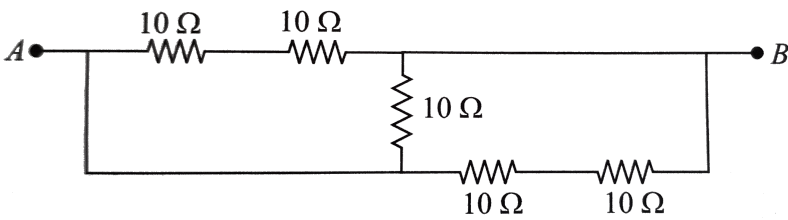
D. 10

Answer: C



[Watch Video Solution](#)

9. Five equal resistances of 10Ω are connected between A and B as shown in figure. The resultant resistance



- A. $10\ \Omega$
- B. $5\ \Omega$
- C. $15\ \Omega$
- D. $6\ \Omega$

Answer: B

[▶ Watch Video Solution](#)

10. The correct combination of three resistances $1\ \Omega$, $2\ \Omega$ and $3\ \Omega$ to get equivalent resistance $\frac{11}{5}\ \Omega$ is

- A. All three are combines in paralle
- B. All three are combines in paralle

C. 1Ω and 2Ω in parallel and 3Ω is in series to both

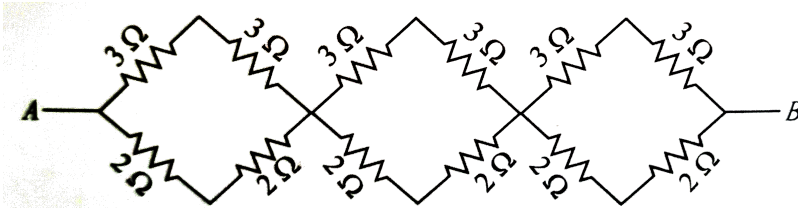
D. 2Ω and 3Ω in parallel and 3Ω is in series to both

Answer: D



Watch Video Solution

11. Equivalent resistance of the given network between points A and B is



A. $31/5\Omega$

B. $41/5\Omega$

C. $36/5\Omega$

D. $49/5\Omega$

Answer: C



Watch Video Solution

12. n resistors each of resistance R first combine to give maximum effective resistance and then combine to give minimum. The ratio of the maximum resistance is

A. n

B. n^2

C. $n^2 - 1$

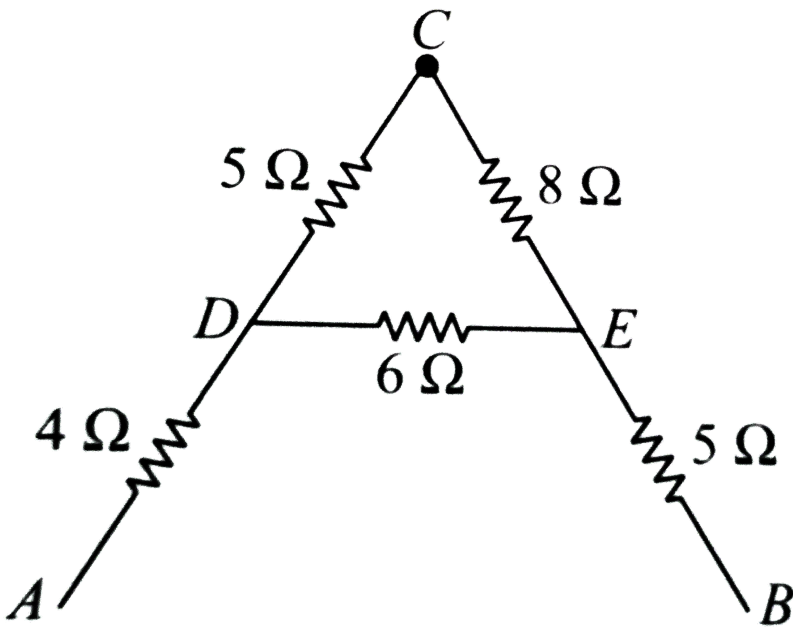
D. n^3

Answer: B



[Watch Video Solution](#)

13. The equivalent resistance between A and B for the circuit shown in this figure is



A. $13.1\ \Omega$

B. $15.1\ \Omega$

C. $17.1\ \Omega$

D. $19.1\ \Omega$

Answer: A



Watch Video Solution

14. A copper cylindrical tube has inner radius a and outer radius b . The resistivity is ρ . The resistance of the cylinder between the two ends is

A. $\frac{\rho l}{b^2 - a^2}$

B. $\frac{\rho l}{2\pi(b - a)}$

C. $\frac{\rho l}{\pi(b^2 - a^2)}$

D. $\frac{\pi(b^2 - a^2)}{\rho l}$

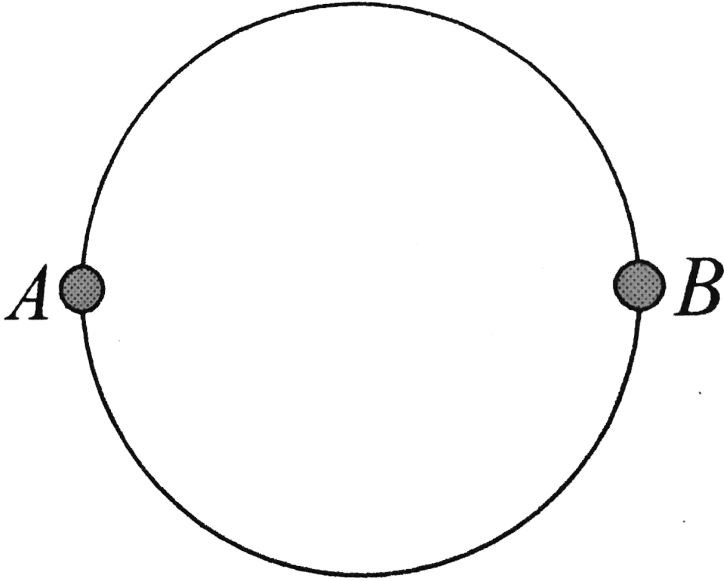
Answer: C



Watch Video Solution

15. A wire of resistance $12\Omega m^{-1}$ is bent to form a complete circle of radius $10cm$. The resistance between its two diametrically opposite

points, A and B as shown in the figure, is



A. 3Ω

B. $6\pi\Omega$

C. 6Ω

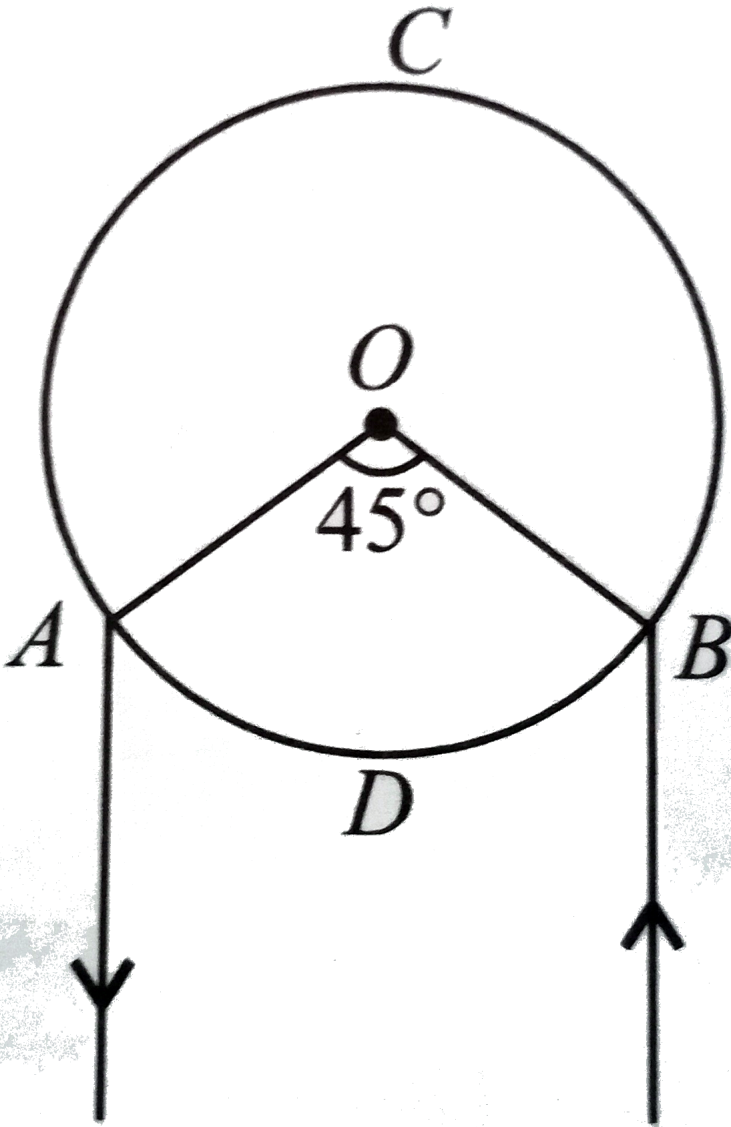
D. $0.6\pi\Omega$

Answer: D



Watch Video Solution

16. A and B are two points on a uniform ring of resistance 15Ω . The $\angle AOB = 45^\circ$. The equivalent resistance between A and B is



A. 1.64Ω

B. 2.84Ω

C. 4.57Ω

D. 2.64Ω

Answer: A



Watch Video Solution

17. Two metal wires of identical dimensions are connected in series. If σ_1 and σ_2 are the conductivities of the metal wires respectively, the effective conductivity of the combination is

A. $\sigma_1 + \sigma_2$

B. $\frac{\sigma_1 + \sigma_2}{2}$

C. $\sqrt{\sigma_1 + \sigma_2}$

D. $\frac{2\sigma_1 + \sigma_2}{\sigma_1 + \sigma_2}$

Answer: D



[Watch Video Solution](#)

18. Three resistors 2Ω , 4Ω and 5Ω are combined in parallel. This combination is connected to a battery of emf 20V and negligible internal Resistance. The total current drawn from the battery is

A. 10A

B. 15A

C. 19A

D. 23A

Answer: C



[Watch Video Solution](#)

19. Three resistors of resistances 3Ω , 4Ω and 5Ω are combined in parallel. This combination is connected to a battery of emf 12V and negligible internal resistance, current through each resistor in ampere is

A. 4,3,2,4

B. 8,7,3,4

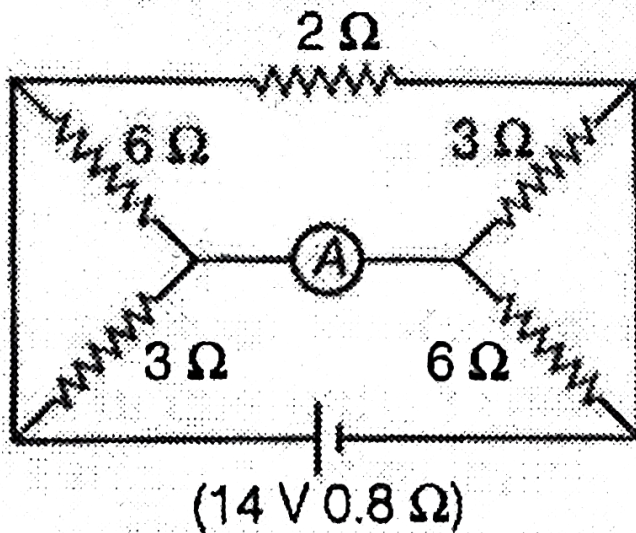
C. 2,5,1,8

D. 5,5,8,2

Answer: A

 [Watch Video Solution](#)

20. The reading of ammeter shown in figure is



A. 6.56A

B. 3.28A

C. 2.18A

D. 1.09A

Answer: C



Watch Video Solution

21. Three resistances 2Ω , 4Ω , 5Ω are combined in series and this combination is connected to a battery of 12 V emf and negligible internal resistance. The potential drop across these resistances are

A. (5, 45, 4.36, 2.18) V

B. (2, 18, 5.45, 4.36) V

C. (4.36, 2.18, 5.45) V

D. (2.18, 4.36, 5.45) V

Answer: D



Watch Video Solution

22. In the shown in the given figure, the resistances R_1 and R_2 are respectively



A. 14Ω and 40Ω

B. 40Ω and 44Ω

C. 40Ω and 30Ω

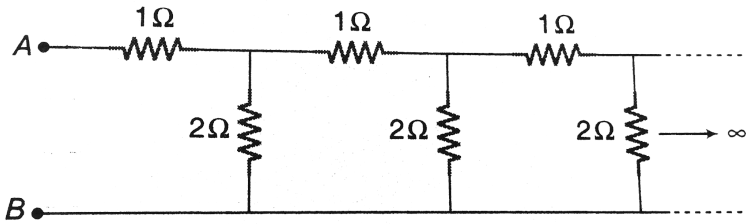
D. 14Ω and 30Ω

Answer: A



View Text Solution

23. An infinite ladder network is constructed with 1Ω and 2Ω resistors as shown. Find the equivalent resistance points A and B .



A. 1Ω

B. 2Ω

C. 3Ω

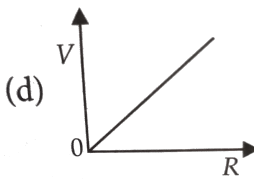
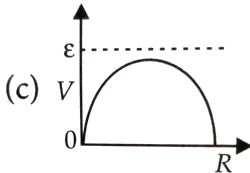
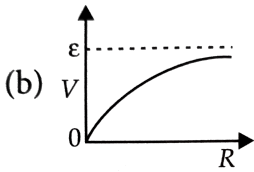
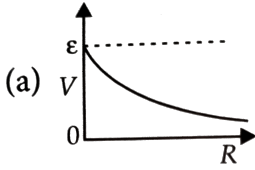
D. 4Ω

Answer: B

 [Watch Video Solution](#)

Cells Emf Internal Resistance

1. A cell having an emf E and internal resistance r is connected across a variable external resistance R . As the resistance R is increased, the plot of potential difference V across R is given by



Answer: B

 [Watch Video Solution](#)

2. A battery of emf 15 V and internal resistance of 4Ω is connected to a resistor. If the current in the circuit is 2A and the circuit is closed. Resistance of the resistor and terminal voltage of the battery will be

A. 2.5Ω , 6V

B. 3.5Ω , 6V

C. 2.5Ω , 7V

D. 3.5Ω , 7V

Answer: D



[Watch Video Solution](#)

3. The battery of a trunk has an emf of 24 V. If the internal resistance of the battery is 0.8Ω . What is the maximum current that can be drawn from the battery?

A. 30A

B. 32A

C. 33A

D. 34A

Answer: A



[Watch Video Solution](#)

4. A battery having 12V emf and internal resistance 3Ω is connected to a resistor. If the current in the circuit is 1A, then the resistance of resistor and lost voltage of the battery when circuit is closed will be

A. 7Ω , $7V$

B. 8Ω , $8V$

C. 9Ω , $9V$

D. 9Ω , $10V$

Answer: C



[Watch Video Solution](#)

5. When a current of 2 A flows in a battery from negative to positive terminal, the potential difference across it is 12 V. If a current of 3 A flowing in the opposite direction produces a potential difference of 15 V, the emf of the battery is

A. 12.6V

B. 13.2V

C. 13.5V

D. 14.0V

Answer: B



[Watch Video Solution](#)

6. In a circuit a cell with internal resistance r is connected to an external resistance R . The condition for the maximum current that drawn from the

cell is

A. $R = r$

B. $R < r$

C. $R > r$

D. $R = 0$

Answer: D



[Watch Video Solution](#)

Kirchoff S Law

1. In parallel combination of n cells, we obtain

A. more voltage

B. more current

C. less voltage

D. less current

Answer: B



[Watch Video Solution](#)

2. If n cells each of emf E and internal resistance r are connected in parallel, then the total emf and internal resistances will be

A. $\varepsilon, \frac{r}{n}$

B. ε, nr

C. $n\varepsilon, \frac{r}{n}$

D. $n\varepsilon, nr$

Answer: A



[Watch Video Solution](#)

3. In the series combination of n cells each cell having emf ε and internal resistance r . If three cells are wrongly connected, then total emf and internal resistance of this combination will be

A. $n\varepsilon, (nr - 3r)$

B. $(n\varepsilon - 2r), nr$

C. $(n\varepsilon - 4\varepsilon), nr$

D. $(n\varepsilon - 6\varepsilon), nr$

Answer: D



[Watch Video Solution](#)

4. Point out the right statements about the validity of, Kirchhoff's junction rule

A. it is based on conservation of charge

B. outgoing currents add up and are equal to incoming currents at a junction.

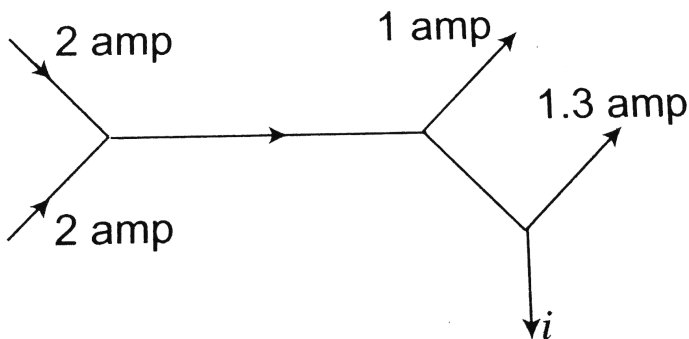
C. bending or reorienting the wire does not change the validity of Kirchhoff's junction rule.

D. all of above.

Answer: D

[▶ Watch Video Solution](#)

5. The figure below shows current in a part of electric circuit. The current i is



A. 1.7A

B. 3.7A

C. 1.3A

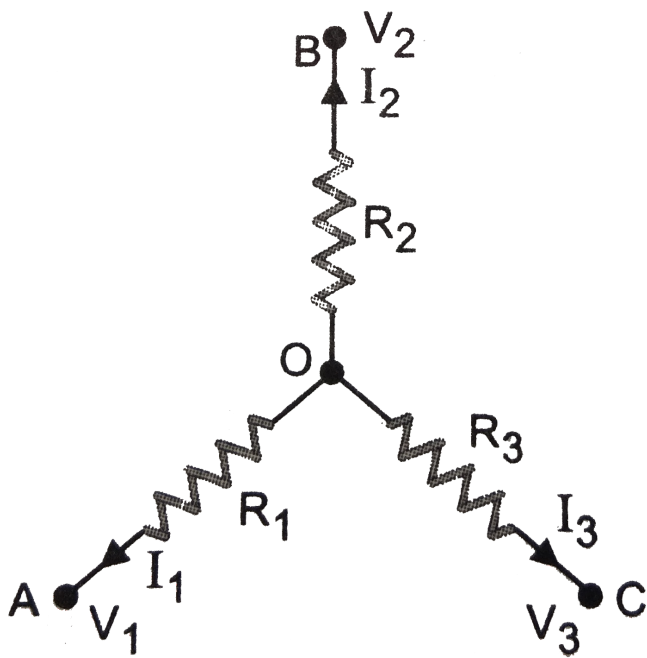
D. 1A

Answer: A



Watch Video Solution

6. A circuit has a section ABC if the potential at point A , B and C are V_1 , V_2 and V_3 respectively, calculate the potential at point O



A. $V_1 + V_2 + V_3$

B. $\left[\frac{V_1 + V_2 + V_3}{R_1 + R_2 + R_3} \right] \left[\frac{1}{R_1 + R_2 + R_3} \right]^{-1}$

C. zero

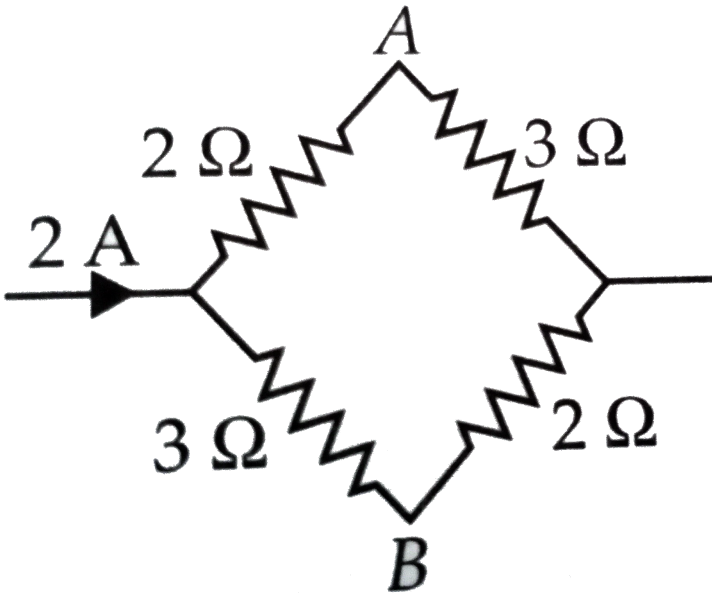
D. $\left[\frac{V_1 + V_2 + V_3}{R_1 + R_2 + R_3} \right] (R_1 + R_2 + R_3)$

Answer: B



Watch Video Solution

7. The potential difference between A and B as shown in figure is



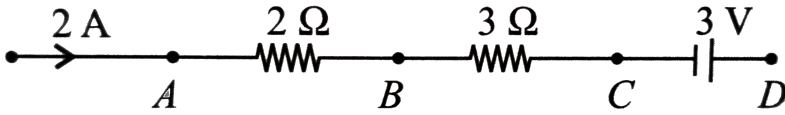
- A. 1V
- B. 2V
- C. 3V
- D. 4V

Answer: A



[Watch Video Solution](#)

8. In the given circuit the potential at point B is zero, the potential at points A and D will be



A. $V_A = 4V, V_D = 9V$

B. $V_A = 3V, V_D = 4V$

C. $V_A = 9V, V_D = 3V$

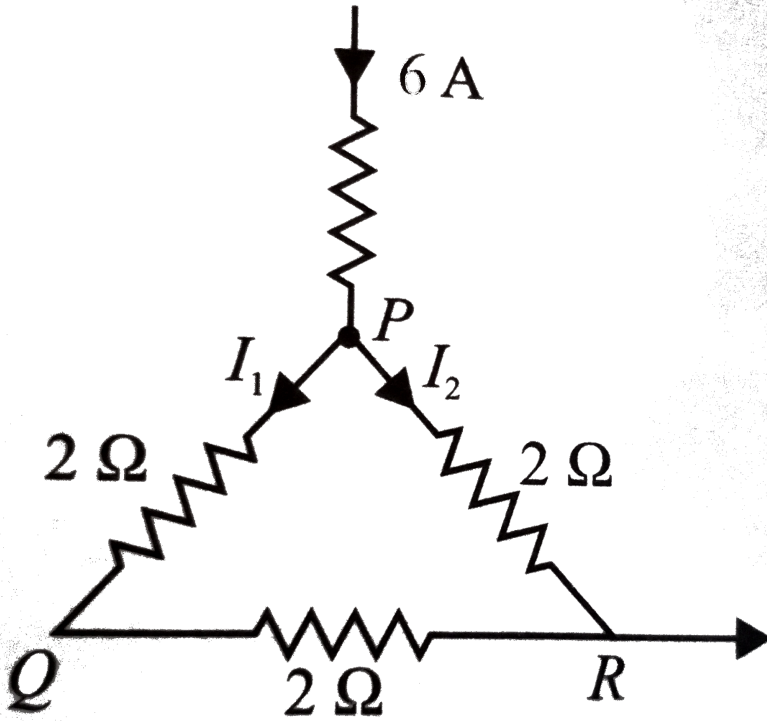
D. $V_A = 4V, V_D = 3V$

Answer: D

[▶ Watch Video Solution](#)

9. A current of 6 A enters one corner P of an equilateral triangle PQR having 3 wires of resistances 2 Ω each and leaves by the corner R. Then

the currents I_1 and I_2 are



A. 2A,4A

B. 4A,2A

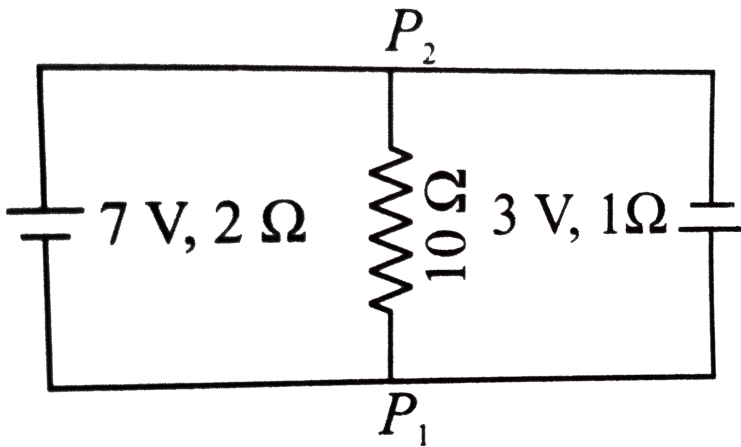
C. 1A,2A

D. 2A,3A

Answer: A

 Watch Video Solution

10. 7 V battery with internal resistance 2Ω and 3V battery with internal resistance 1Ω are connected to a 10Ω resistors as shown in figure, the current in 10Ω resistor is



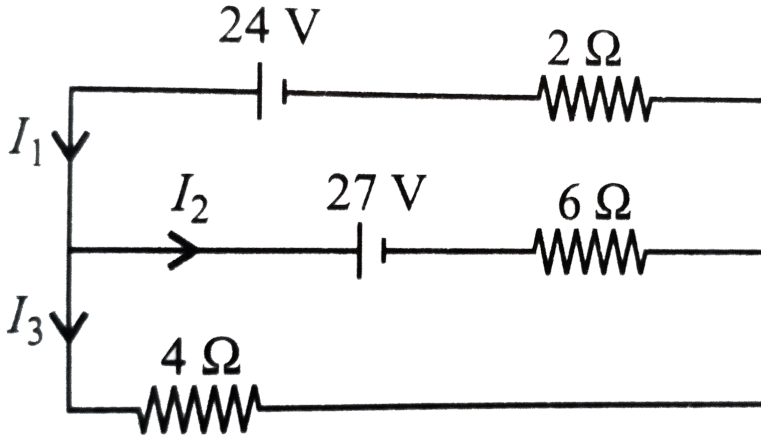
- A. 0.27A
- B. 0.31A
- C. 0.031A
- D. 0.53

Answer: C



Watch Video Solution

11. In the circuit shown, the value of currents I_1 , I_2 and I_3 are



A. $3A, -\frac{3A}{2}, \frac{9}{2}A$

B. $\frac{9}{2}A, -\frac{3}{2}A$

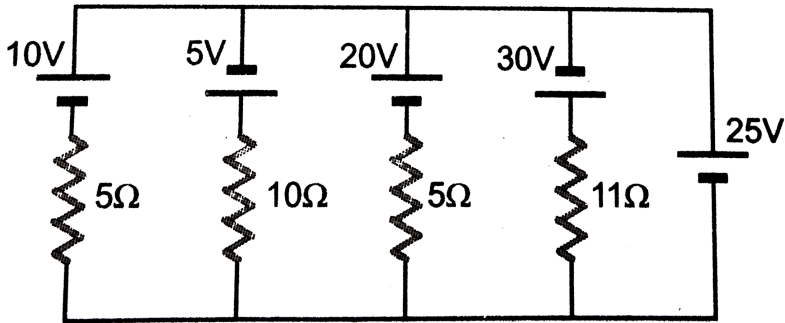
C. $5A, 4A, -3A$

D. $7A, \frac{5}{4}A, \frac{9}{2}A$

Answer: A

 Watch Video Solution

12. In the circuit shown in figure the current flowing through 25 V cell is



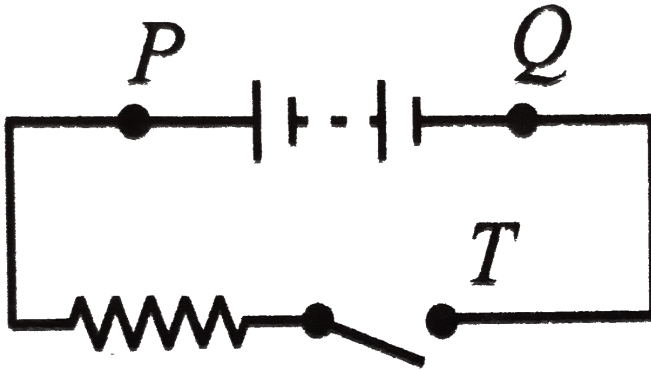
- A. 7.2A
- B. 10A
- C. 12A
- D. 14.2A

Answer: C

 [Watch Video Solution](#)

13. A battery, an open switch and a resistor are connected in series as shown in figure. Consider the following three statements concerning the

circuit. A voltmeter will read zero if it is connected across points



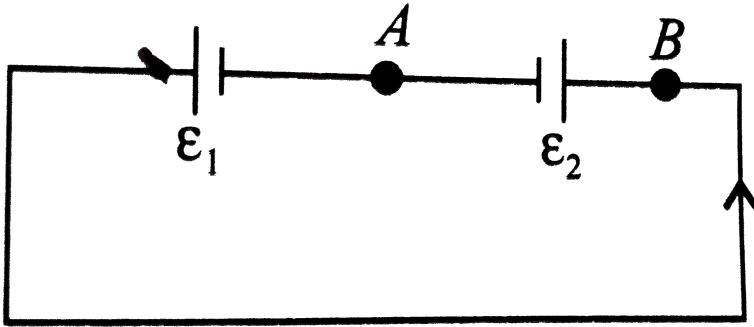
(i) P and T (ii) P and Q (iii) Q and T Which one of the above is/are true?

- A. only i
- B. only iii
- C. only I and iii
- D. I,ii and iii

Answer: C

 [Watch Video Solution](#)

14. Two cells e_1 and e_2 connected in opposition to each other as shown in figure. The cell of emf 9 V and internal resistance 3Ω the cell is of emf 7V and internal resistance 7Ω . The potential difference between the points A and B is



- A. 8.4V
- B. 5.6V
- C. 7.8V
- D. 6.6V

Answer: A



Watch Video Solution

1. In a wheatstone bridge if the battery and galvanometer are interchanged then the deflection in galvanometer will


- A. change in previous direction
- B. not change
- C. change in opposite direction
- D. none of these.

Answer: B



[Watch Video Solution](#)

2. In a Wheatstone's network, $P = 2\Omega$, $Q = 2\Omega$, $R = 2\Omega$ and $S = 3\Omega$.

The resistance with which S is to be shunted in order that the bridge may be balanced is 

- A. 1Ω

B. 2Ω

C. 4Ω

D. 6Ω

Answer: D



Watch Video Solution

3. Four resistances of 3Ω , 3Ω , 3Ω and 4Ω respectively are used to form a Wheatstone bridge. The 4Ω resistance is short circuited with a resistance R in order to get bridge balanced. The value of R will be

A. 10Ω

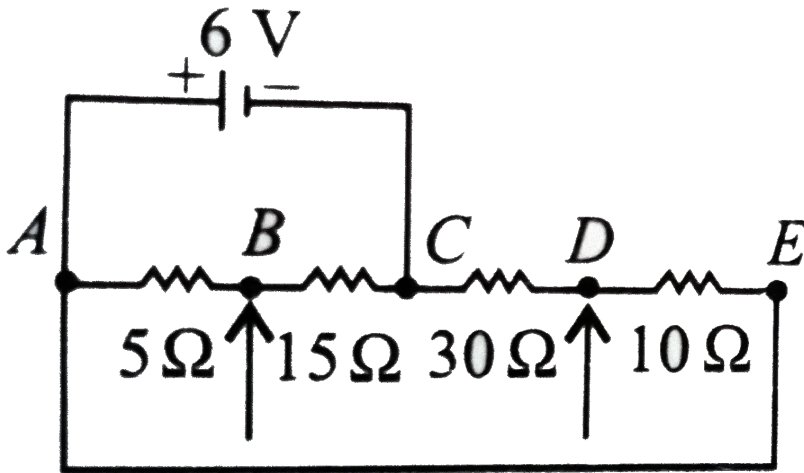
B. 11Ω

C. 12Ω

D. 13Ω

Answer: C

4. Four resistors are connected as shown in the figure. A 6 V battery of negligible resistance is connected across terminal battery of negligible resistance A and C. The potential difference across terminal B and D will be



- A. zero
- B. 1.5V
- C. 2V
- D. 3V

Answer: A



[Watch Video Solution](#)

5. Resistances P , Q , S and R are arranged in a cyclic order to form a balanced Wheatstone's network. The ratio of power consumed in the branches $(P+Q)$ and $(R+S)$ is

A. $1:1$

B. $R:P$

C. $P^2:Q^2$

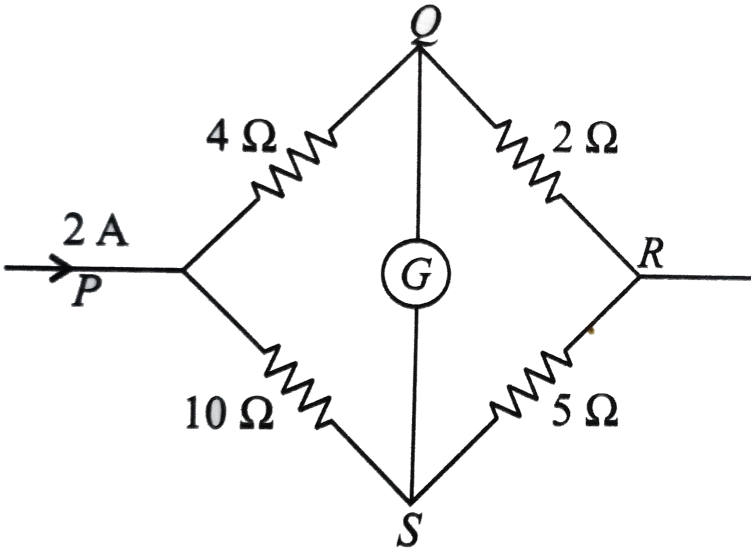
D. $P^2:R^2$

Answer: B



[Watch Video Solution](#)

6. In the shown figure, bridge is balanced, the current flowing through 2Ω resistance is



- A. $\frac{10}{8} A$
- B. $\frac{11}{7} A$
- C. $\frac{13}{7} A$
- D. $\frac{8}{7} A$

Answer: A



Watch Video Solution

Meter Bridge

1. When a metal conductor connected to left gap of a meter bridge is heated, the balancing point

- A. shifts towards right
- B. shifts towards left
- C. remains unchanged
- D. remains at zero

Answer: A



[Watch Video Solution](#)

2. In a meter bridge experiment the ratio of left gap resistance to right gap resistance is 2: 3 the balance point from is

- A. 60cm

B. 50cm

C. 40cm

D. 20cm

Answer: C



[Watch Video Solution](#)

3. A wire connected in the left gap of a meter bridge balance a 10Ω resistance in the right gap to a point, which divides the bridge wire in the ratio 3:2. If the length of the wire is 1m. The length of one ohm wire is

A. 0.057m

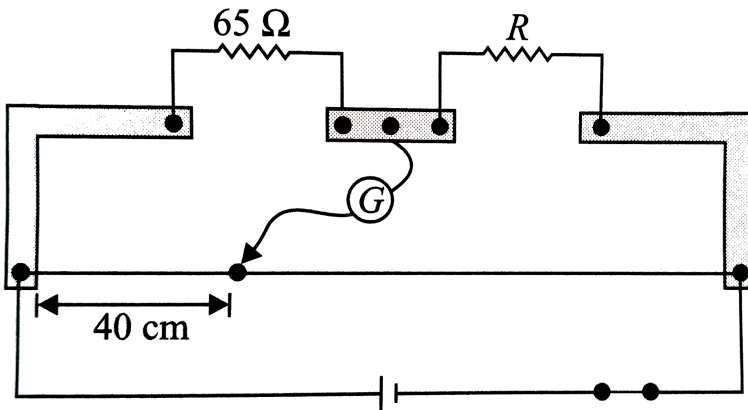
B. 0.067m

C. 0.37m

D. 0.134m

Answer: B

4. What is the value of unknown resistance R , if galvanometer shows null deflection in the given meter bridge set up?



- A. 97.50Ω
- B. 105Ω
- C. 150Ω
- D. 110Ω

Answer: A

1. In a potentiometer of 10 wires, the balance point is obtained on the 7th.

To shift the balance point to 9th wire, we should

- A. decrease resistance in the main circuit.
- B. increase resistance in the main circuit.
- C. decrease resistance in series the cell whose emf is to be measured.
- D. increase resistance in series with the cell whose emf is to be determined

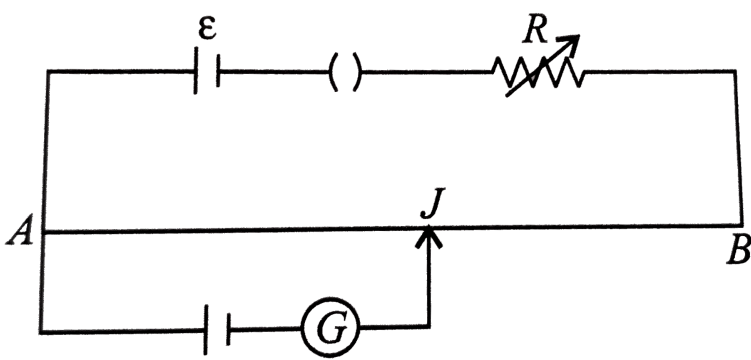
Answer: D



[Watch Video Solution](#)

2. AB is wire of potentiometer with the increase in the value of resistance

R, the shift in the balance point J will be



- A. toward B
- B. toward A
- C. remains constant
- D. first towards B then back towards A

Answer: A

[▶ Watch Video Solution](#)

3. In a potentiometer a cell of emf 1.5V gives a balanced point 32cm length of the cell is replaced by another cell then the balance point shifts to 65.0cm the emf of second cell is

A. 3.05V

B. 2.05V

C. 4.05V

D. 6.05V

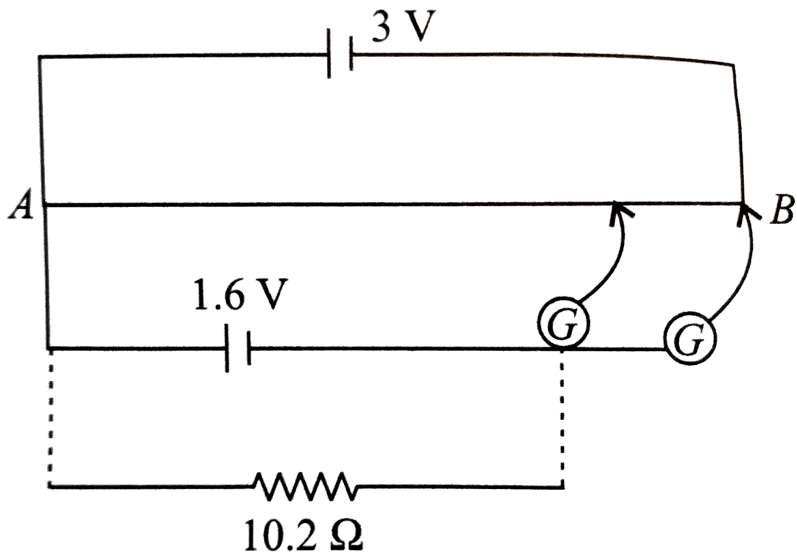
Answer: A



[Watch Video Solution](#)

4. 3V potentiometer used for the determination of internal resistance of a 2.4V cell. The balanced point of the cell in open circuit is 75.8cm. When a resistor of 10.2Ω is used in the external circuit of the cell the balance point shifts to 68.3cm length of the potentiometer wire. The internal

resistance of the cell is



- A. 2.5Ω
- B. 2.25Ω
- C. 1.12Ω
- D. 3.2Ω

Answer: C



Watch Video Solution

5. In a potentiometer the balancing with a cell is at length of 220cm. On shunting the cell with a resistance of 3Ω balance length becomes 130cm. What is the internal resistance of this cell.

- A. 4.5Ω
- B. 7.8Ω
- C. 6.3Ω
- D. 2.08Ω

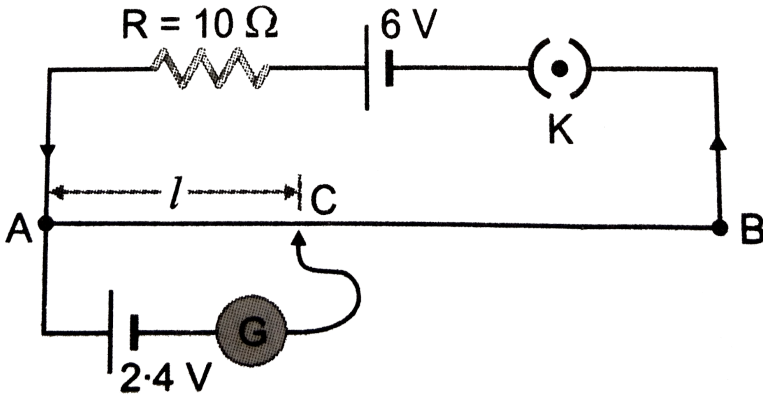
Answer: D



[Watch Video Solution](#)

6. The potentiometer wire of length 200cm has a resistance of 20Ω . It is connected in series with a resistance 10Ω and an accumulator of emf $6V$ having negligible internal resistance. A source of $2.4V$ is balanced against length l of the potentiometer wire. Find the length l of the

potentiometer wire. Find the length l



- A. 100cm
- B. 120cm
- C. 110cm
- D. 140cm

Answer: B

[Watch Video Solution](#)

7. A potentiometer wire of length 100 cm has a resistance of 100Ω it is connected in series with a resistance and a battery of emf 2 V and of

negligible internal resistance. A source of emf 10 mV is balanced against a length of 40 cm of the potentiometer wire. what is the value of the external resistance?

A. 790Ω

B. 890Ω

C. 990Ω

D. 1090Ω

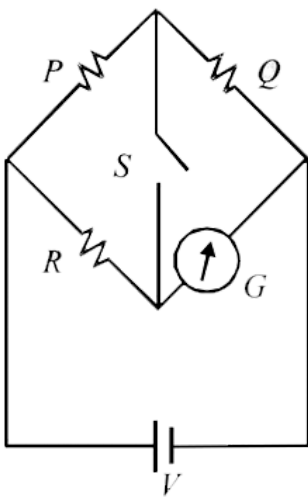
Answer: A



[Watch Video Solution](#)

Hots

1. In the circuit $P \neq R$, the reading of the galvanometer is same with switch S open or closed. Then



A. $I_R = I_G$

B. $I_P = I_G$

C. $I_Q = I_G$

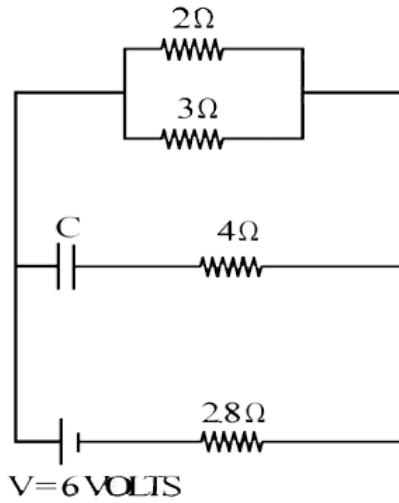
D. $I_Q = I_R$

Answer: A

[▶ Watch Video Solution](#)

2. Calculate the steady state current in the 2- ohm resistor shown in the circuit in the figure. The internal resistance of the battery is negligible

and the capacitance of the condenser C is 0.2 microfarad.



A. 0.6A

B. 0.9A

C. 1.2A

D. 0.1A

Answer: B



[Watch Video Solution](#)

3. A straight copper-wire of length $100m$ and cross-sectional area $1.0mm^2$ carries a current $4.5A$. Assuming that one free electron corresponds to each copper atom, find

(a) The time it takes an electron to displace from one end of the wire to the other.

(b) The sum of electrostatic forces acting on all free electrons in the given wire. Given resistivity of copper is $1.72 \times 10^{-8}\Omega - m$ and density of copper is $8.96g/cm^3$.

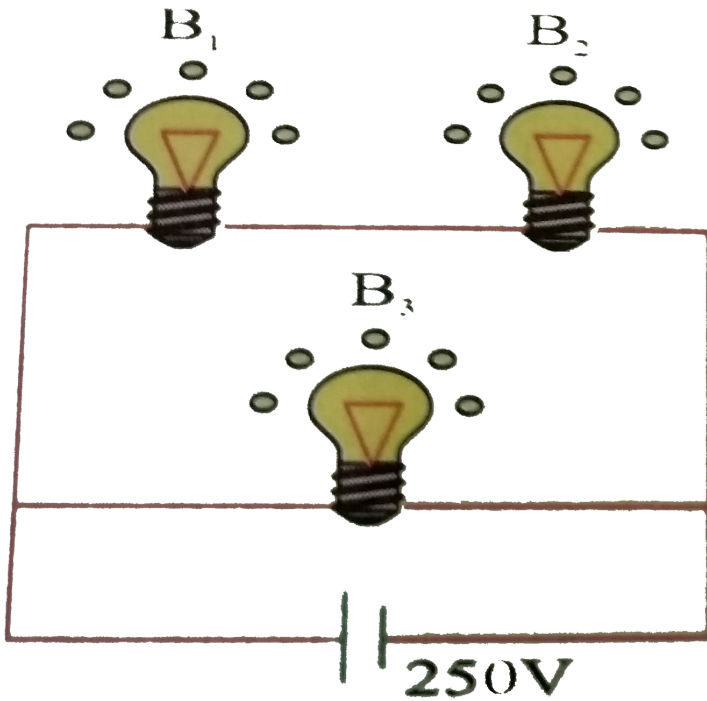
A. The time taken by an electron to displace from one end of the wire to the other is 4×10^6 s.

B. The sum of electric force acting on all free electrons in the given wire is 1×10^6 N.

C. The time taken by an electron to displace from one end of the wire to the other is 3×10^6 s.

D. Both (b) and (c).

Answer: D



4.

A 100 W bulb B_1 and two 60 W bulbs B_2 and B_3 , are connected to a 250V source, as shown in the figure now W_1 , W_2 and W_3 are the output powers of the bulbs B_1 , B_2 and B_3 respectively then

- A. $W_1 > W_2 = W_3$
- B. $W_1 > W_2 > W_3$
- C. $W_1 < W_2 = W_3$

$$D. W_1 < W_2 < W_3$$

Answer: D



Watch Video Solution

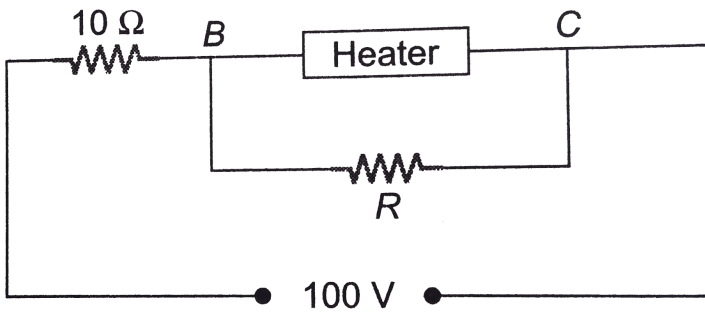
5. Two batteries of emf e_1 and e_2 having internal resistance r_1 and r_2 respectively are connected in series to an external resistance R . Both the batteries are getting discharged. The above described combination of these two batteries has to produce a weaker current than when any one of the batteries is connected to the same resistor. For this requirement to be fulfilled

- A. $\frac{\varepsilon_2}{\varepsilon_1}$ must not lie between $\frac{r_2}{r_1 + R}$ and $\frac{r_1}{r_2 + R}$
- B. $\frac{\varepsilon_2}{\varepsilon_1}$ must not lie between $\frac{r_2}{r_1 + R}$ and $\frac{r_2 + R}{r_1}$
- C. $\frac{\varepsilon_2}{\varepsilon_1}$ must lie between $\frac{r_2}{r_1 + R}$ and $\frac{r_1}{r_2 + R}$
- D. $\frac{\varepsilon_2}{\varepsilon_1}$ must not lie between $\frac{r_2}{r_1 + R}$ and $\frac{r_2 + R}{r_1}$

Answer: B



6. A heater is designed to operate with a power of $1000W$ in a $100V$ line. It is connected in combination with a resistance of 10Ω and a resistance R , to a $100V$ mains as shown in figure. What will be the value of R so that the heater operates with a power of $62.5W$?



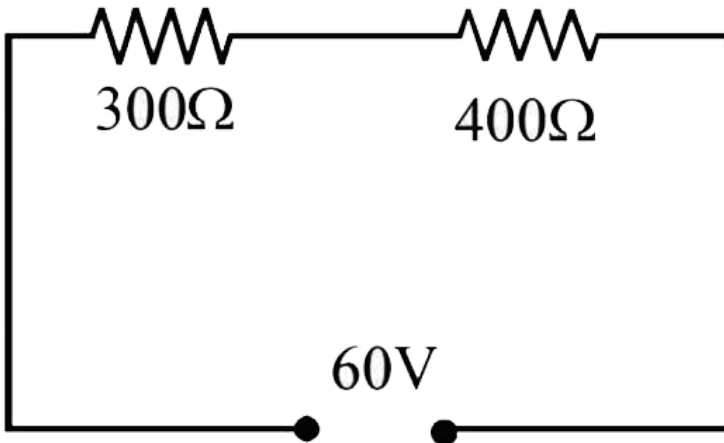
- A. 15Ω
- B. 10Ω
- C. 5Ω
- D. 25Ω

Answer: C



7. State ohm's law.

In the circuit shown in figure, a voltmeter reads 30 volts when it is connected across 400 ohm resistance. Calculate what the same voltmeter will read when it is connected across the 300 ohm resistance.



- A. 30V
- B. 12.5V
- C. 15V
- D. 22.5V

Answer: D



[Watch Video Solution](#)

8. It is desired to make a long cylindrical conductor whose temperature coefficient of resistivity at $20^\circ C$ will be close to zero. If such a conductor is made by assembling alternate disks of iron and carbon, find the ratio of the thickness of a carbon disk to that an iron disk.

(For carbon, $p = 3500 \times 10^{-8} \Omega m$ and $\alpha = -0.50 \times 10^{-3} .^\circ C^{-1}$ for iron)

A. 0.36

B. 0.036

C. 1

D. 2

Answer: B



[Watch Video Solution](#)

1. Consider a current carrying wire (current I) in the shape of a circle. Note that as the current progresses along the wire, the direction of \vec{J} (current density) changes in an exact manner, while the current I remains unaffected. The agent that is essentially responsible for is

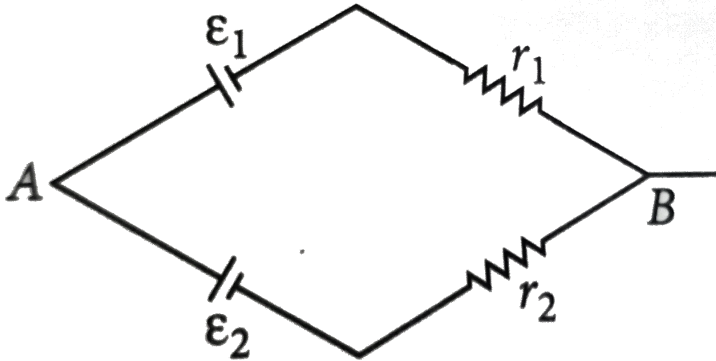
- A. source of e.m.f.
- B. electric field produced by charges accumulated on the surface of wire.
- C. the charges just behind a given segment of wire which push them just right way by repulsion
- D. the charges just behind a given segment of wire which push them just right way by repulsion

Answer: B



[Watch Video Solution](#)

2. Two batteries of emf E_1 and E_2 ($E_2 > E_1$) and internal resistances r_1 and r_2 respectively are connected in parallel as shown in figure.



A. Two batteries of emf E_1 and E_2 ($E_2 > E_1$) and internal resistances r_1 and r_2 respectively are connected in parallel as shown in figure.

B. The equivalent emf E_{eq} is smaller than E

C. Two batteries of emf E_1 and E_2 ($E_2 > E_1$) and internal resistances r_1 and r_2 respectively are connected in parallel as shown in figure.

D.

Answer: A



View Text Solution

3. A resistance R is to be measured using a meter bridge. Student chooses the standard resistance S to be 100Ω . He finds the null point at $l_1 = 2.9\text{cm}$. He is told to attempt to improve the accuracy. Which of the following is a useful way?

- A. He should measure l_1 more accurately.
- B. He should change S to $1000\ \Omega$ and repeat the experiment.
- C. He should change S to $3\ \Omega$ and repeat the experiment
- D. He should give up hope of a more accurate measurement with a meter bridge.

Answer: C



Watch Video Solution

4. Two cells of emfs approximately 5V and 10V are to be accurately compared using a potentiometer of length 400 cm .

- A. The battery that runs the potentiometer should have voltage of 8 V.
- B. The battery of potentiometer can have a voltage of 15 V and R adjusted so that the potential drop across the wire slightly exceeds 10 V.
- C. The first portion of 50 cm of wire itself should have a potential drop of 10 V
- D. Potentiometer is usually used for comparing resistances and not voltages.

Answer: B

 [Watch Video Solution](#)

5. A metal rod of the length 10cm and a rectangular cross-section of 1 cm x $\frac{1}{2}$ cm is connected to a battery across opposite faces. The resistance will be

A. maximum when the battery is connected across

- B. maximum when the battery is connected across
- C. maximum when the battery is connected across
- D. same irrespective of the three faces.

Answer: A

 [Watch Video Solution](#)

6. Which of the following characteristics of electrons determines the current in a conductor?

- A. Drift velocity alone
- B. Thermal velocity alone
- C. Both drift velocity and thermal velocity
- D. Neither drift nor thermal velocity

Answer: A

 [Watch Video Solution](#)

1. Assertion : Electrons which constitute the current are negatively charged.

Reason: Current carrying wire is negatively charged.

A. If both assertion and reason are true and reason is the correct explanation of assertion.

B. If both assertion and reason are true and reason is not the correct explanation of assertion.

C. If assertion is false but reason is true.

D. If assertion is true but reason is false.

Answer: C

 [Watch Video Solution](#)

2. Assertion : Current can be represented with an arrow Reason: Current is a vector quantity.

- A. If both assertion and reason are true and reason is the correct explanation of assertion.
- B. If both assertion and reason are true and reason is not the correct explanation of assertion.
- C. If assertion is true but reason is false
- D. If both assertion and reason are false.

Answer: C

 [Watch Video Solution](#)

3. Assertion : Current flows in a conductor only when there is an external electric field within the conductor.

Reason: The drift velocity of the electrons is directly proportional to the electric field.

A. If both assertion and reason are true and reason is the correct explanation of assertion.

B. If both assertion and reason are true and reason is not the correct explanation of assertion.

C.

D. If assertion is true but reason is false.

Answer: A



Watch Video Solution

4. Assertion: The bending of an insulated wire increase the resistance of wire

Reason : The drift velocity of electron in this wire decreases

A. If both assertion and reason are true and reason is the correct explanation of assertion.

B. If both assertion and reason are true and reason is not the correct explanation of assertion.

C.

D. If assertion is true but reason is false.

Answer: D

 [Watch Video Solution](#)

5. Assertion: Drift velocity of electrons is independent of time.

Reason: Electrons are accelerated in the presence of electric field.

A. If both assertion and reason are true and reason is the correct explanation of assertion.

B. If both assertion and reason are true and reason is not the correct explanation of assertion.

C. If assertion is false but reason is true.

D. If assertion is true but reason is false.

Answer: B

 [Watch Video Solution](#)

6. Assertion: For good conductors, the I-V graph is a perfect straight line inclined to current axis.

Reason: By Ohm's law, voltage across the ends of a conductor is directly proportional to the resistance of the conductor.

- A. If both assertion and reason are true and reason is the correct explanation of assertion.
- B. If both assertion and reason are true and reason is not the correct explanation of assertion.
- C. If assertion is false but reason is true.
- D. If assertion is true but reason is false.

Answer: D



[Watch Video Solution](#)

7. Assertion: The resistance of a conductor decreases with increase in cross sectional area.

Reason: On increasing the cross sectional area of a conductor, more current will flow through the conductor.

- A. If both assertion and reason are true and reason is the correct explanation of assertion.
- B. If both assertion and reason are true and reason is not the correct explanation of assertion.
- C. If assertion is false but reason is true.
- D. If assertion is true but reason is false.

Answer: A



[Watch Video Solution](#)

8. Assertion : Insulators do not allow flow of current through them.

Reason: Insulators have no free charge carrier

A. If both assertion and reason are true and reason is the correct explanation of assertion.

B. If both assertion and reason are true and reason is not the correct explanation of assertion.

C.

D. If assertion is true but reason is false.

Answer: A



[Watch Video Solution](#)

9. Assertion: Ohm's law is not valid if current depends on voltage non-linearly.

Reason: Ohm's law is a fundamental law of nature.

- A. If both assertion and reason are true and reason is the correct explanation of assertion.
- B. If both assertion and reason are true and reason is not the correct explanation of assertion.
- C. If assertion is false but reason is true.
- D. If assertion is true but reason is false.

Answer: C



[Watch Video Solution](#)

10. Assertion : Electromotive force is a force which helps the electrons to flow and produce current.

Reason : Electromotive force is independent of the voltage across the cell.

- A. If both assertion and reason are true and reason is the correct explanation of assertion.
- B. If both assertion and reason are true and reason is not the correct explanation of assertion.
- C. If assertion is false but reason is true.
- D. If assertion is true but reason is false.

Answer: D



Watch Video Solution

11. Assertion : Some electric appliance have three pins, even though if we remove the top pin, it will continue working.

Reason: The third pin is used only as a safety device.

- A. If both assertion and reason are true and reason is the correct explanation of assertion.

B. If both assertion and reason are true and reason is not the correct explanation of assertion.

C. If assertion is false but reason is true

D. If assertion is true but reason is false.

Answer: A

 [Watch Video Solution](#)

12. Assertion : Current is passed through a metallic wire, heating it red. Half of its portion is cooled by cold water jacket, then rest of the half portion become more hot.

Reason: Resistances decreases due to decrease in temperature and so current through wire increases.

A. If both assertion and reason are true and reason is the correct explanation of assertion.

B. If both assertion and reason are true and reason is not the correct explanation of assertion.

C. If assertion is false but reason is true

D. If assertion is true but reason is false.

Answer: A

 [Watch Video Solution](#)

13. Assertion: Kirchhoff's junction rule can be applied to a junction of several lines or a point in a line.

Reason : When steady current is flowing, there is no accumulation of charges at any junction in series with a galvanometer.

A. If both assertion and reason are true and reason is the correct explanation of assertion.

B. If both assertion and reason are true and reason is not the correct explanation of assertion.

C. If assertion is false but reason is true.

D. If assertion is true but reason is false.

Answer: A



Watch Video Solution

14. Assertion : In metre bridge experiment, a high resistance is always connected in series with a galvanometer.

Reason : As resistance increases, current through the circuit increases,

A. If both assertion and reason are true and reason is the correct explanation of assertion.

B. If both assertion and reason are true and reason is not the correct explanation of assertion.

C.

D. If assertion is true but reason is false.

Answer: C



[Watch Video Solution](#)

15. Assertion : Potentiometer is used only to compare potential differences.

Reason: The potentiometer draws current from the voltage source being measured .

- A. If both assertion and reason are true and reason is the correct explanation of assertion.
- B. If both assertion and reason are true and reason is not the correct explanation of assertion.
- C. If assertion is false but reason is true.
- D. If assertion is true but reason is false.

Answer: D



[Watch Video Solution](#)

Drift Of Electrons And The Origin Of Resistivity

1. For which of the following dependences of drift velocity, v_d on electric field E , Ohm's law obeyed?

A. $v_d \propto E$

B. $v_d \propto E^2$

C. $v_d \propto \sqrt{E}$

D. $v_d \propto \frac{1}{\sqrt{E}}$

Answer: A



[Watch Video Solution](#)

2. A charged particle having drift velocity of $7.5 \times 10^{-4} \text{ m s}^{-1}$ in electric field of $3 \times 10^{-10} \text{ V m}^{-1}$ mobility is

A. $6.5 \times 10^6 m^2 V^{-1} s^{-1}$

B. $2.5 \times 10^6 m^2 V^{-1} s^{-1}$

C. $2.5 \times 10^4 m^2 V^{-1} s^{-1}$

D. $6.5 \times 10^4 m^2 V^{-1} s^{-1}$

Answer: B



Watch Video Solution

Resistivity Of Various Materials

1. Range of resistivity for metals is

A. $10^{-6} \Omega m$ to $10^{-4} \Omega m$

B. $10^{-7} \Omega m$ to $10^{-5} \Omega m$

C. $10^{-8} \Omega m$ to $10^{-6} \Omega m$

D. $10^{-9} \Omega m$ to $10^{-7} \Omega m$

Answer: C



[Watch Video Solution](#)

2. Wire bound resistors are made by

A. winding the wires of an alloy viz, Cu,Al,Ag

B. winding the wires of an alloy viz, Si,Tu,Fe

C. winding the wires of an alloy viz, Ge,Au,Gr

D. winding the wires of an alloy viz,magnesium, constantan, nichrome

Answer: D



[Watch Video Solution](#)

3. The resistivity of alloy manganin is

A. Nearly independent of temperature

- B. Increases rapidly with increase in temperature
- C. Decrease with increase in temperature
- D. Increase rapidly with decrease in temperature

Answer: A

 [Watch Video Solution](#)

4. Arrange the following materials in increasing order of their resistivity, Nichrome, Copper, Germanium, Silicon

- A. Copper < Nichrome < Germanium < Silicon
- B. Germanium < Copper < Nichrome < Silicon
- C. Nichrome < Copper < Germanium < Silicon
- D. Silicon < Nichrome < Germanium < Copper

Answer: A

 [Watch Video Solution](#)

5. What is the order of magnitude of the resistnace of a (dry) human body?

- A. 10Ω
- B. $10k\Omega$
- C. $10M\Omega$
- D. $10\mu\Omega$

Answer: B



[Watch Video Solution](#)

6. Two copper wire of length l and $2l$ have radii, r and $2r$ respectively. What si the ratio of their specific resistance.?

- A. $1:2$
- B. $2:1$

C. 1:1

D. 1:3

Answer: C



[Watch Video Solution](#)

7. A resistor is marked with the rings coloured brown, black, green, and gold. The resistance in ohm is

A. $(3.5 \times 10^5 \pm 5 \%)$

B. $(1.10 \times 10^5 \pm 10 \%)$

C. $(8 \times 10^6 \pm 5 \%)$

D. $(1 \times 10^6 \pm 5 \%)$

Answer: D



[Watch Video Solution](#)

1. In the series combination of two or more than two resistances
- A. the current through each resistance is same
 - B. the voltage through each resistance is same
 - C. neither current nor voltage through each resistance is same
 - D. both current and voltage through each resistance are same

Answer: A



[Watch Video Solution](#)

2. Match the Column I with Column II.

Column I		Column II	
(A)	Smaller the resistance greater the current in a circuit	(p)	If the same voltage is applied across a resistance
(B)	Greater or smaller the resistance the current is same	(q)	If the same current is passed
(C)	Greater the resistance smaller the power	(r)	When resistances are connected in series
(D)	Greater the resistance greater the power	(s)	When resistances are connected in parallel

A. A -r, B -p, C -q, D -s

B. A -p, B -r, C -q, D -s

C. A -p, B -r, C -q, D -s

D. A -p, B -r, C -q, D -s

Answer: D



Watch Video Solution

3. Combine three resistors 5Ω , 4.5Ω and 3Ω in such a way that the total resistance of this combination maximum

A. 12.5Ω

B. 13.5Ω

C. 14.5Ω

D. 16.5Ω

Answer: A



[Watch Video Solution](#)

4. The total resistance in the parallel combination of three resistances 9Ω , 7Ω and 5Ω

A. 1.22Ω

B. 2.29Ω

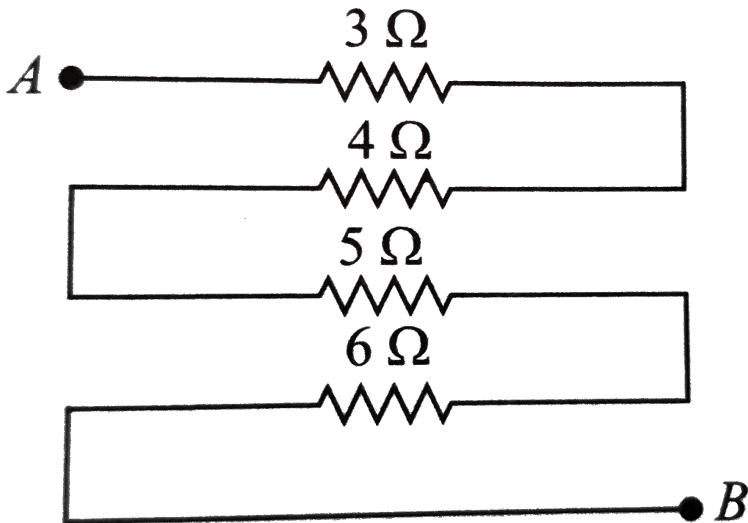
C. 4.22Ω

D. 2.02Ω

Answer: D

 Watch Video Solution

5. Equivalent resistance (in ohm) of the given network is



A. 28

B. 18

C. 26

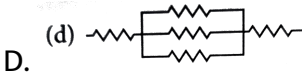
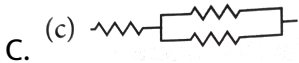
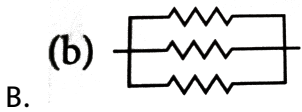
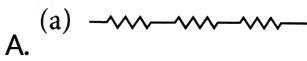
D. 25

Answer: B



Watch Video Solution

6. Which arrangement of 3Ω resistors will give a total resistance of 7Ω ?



Answer: D



Watch Video Solution

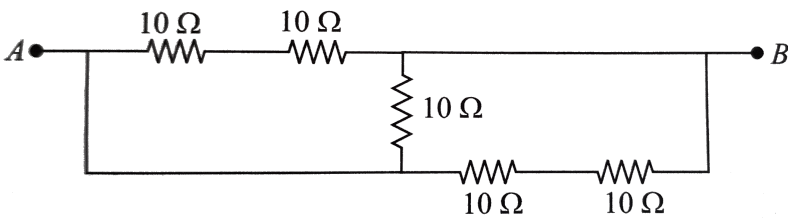
7. The equivalent resistance of series combination of four equal resistors is S . If they are joined in parallel, the total resistance is P . The relation between S and P is given by $S = nP$. Then the minimum possible value of n is

- A. 12
- B. 14
- C. 16
- D. 10

Answer: C

 [Watch Video Solution](#)

8. Five equal resistances of 10Ω are connected between A and B as shown in figure. The resultant resistance



- A. $10\ \Omega$
- B. $5\ \Omega$
- C. $15\ \Omega$
- D. $6\ \Omega$

Answer: B

[▶ Watch Video Solution](#)

9. The correct combination of three resistances $1\ \Omega$, $2\ \Omega$ and $3\ \Omega$ to get equivalent resistance $\frac{11}{5}\ \Omega$ is

- A. All three are combines in paralle
- B. All three are combines in paralle

C. 1Ω and 2Ω in parallel and 3Ω is in series to both

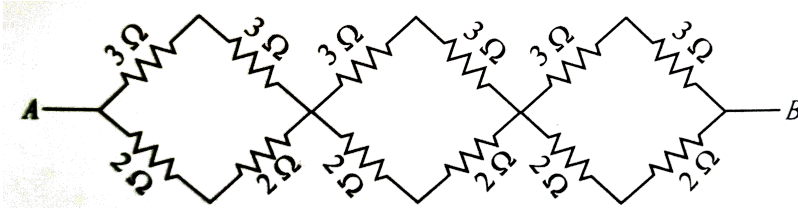
D. 2Ω and 3Ω in parallel and 3Ω is in series to both

Answer: D



Watch Video Solution

10. Equivalent resistance of the given network between points A and B is



A. $31/5\Omega$

B. $41/5\Omega$

C. $36/5\Omega$

D. $49/5\Omega$

Answer: C



Watch Video Solution

11. n resistors each of resistance R first combine to give maximum effective resistance and then combine to give minimum. The ratio of the maximum resistance is

A. n

B. n^2

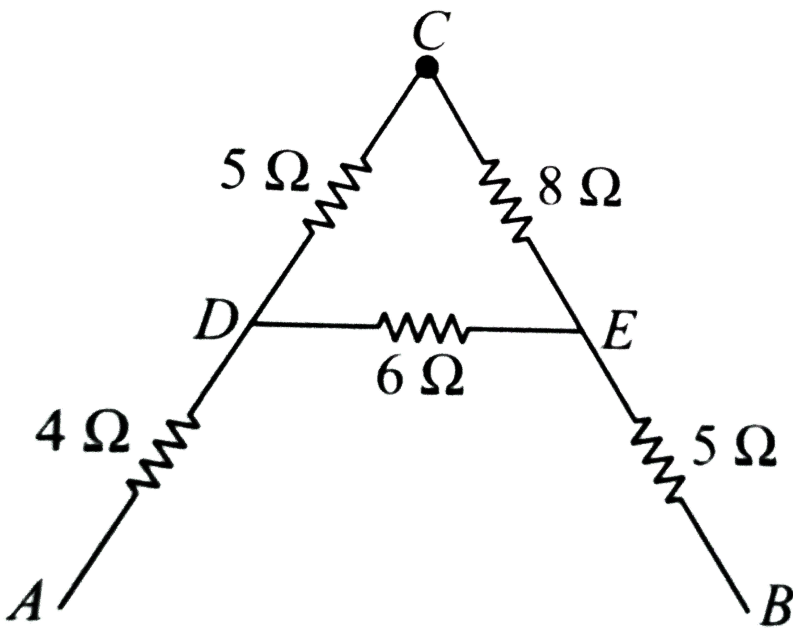
C. $n^2 - 1$

D. n^3

Answer: B

[Watch Video Solution](#)

12. The equivalent resistance between A and B for the circuit shown in this figure is



A. $13.1\ \Omega$

B. $15.1\ \Omega$

C. $17.1\ \Omega$

D. $19.1\ \Omega$

Answer: A



Watch Video Solution

13. A copper cylindrical tube has inner radius a and outer radius b . The resistivity is ρ . The resistance of the cylinder between the two ends is

A. $\frac{\rho l}{b^2 - a^2}$

B. $\frac{\rho l}{2\pi(b - a)}$

C. $\frac{\rho l}{\pi(b^2 - a^2)}$

D. $\frac{\pi(b^2 - a^2)}{\rho l}$

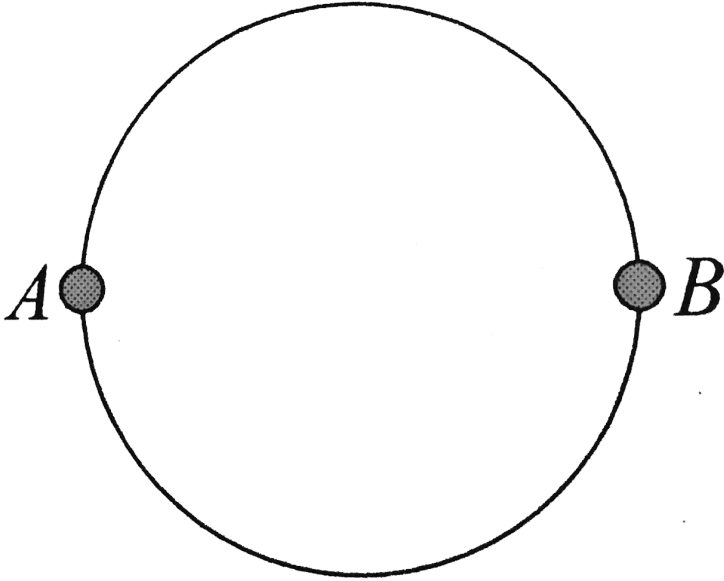
Answer: C



[Watch Video Solution](#)

14. A wire of resistance $12\Omega m^{-1}$ is bent to form a complete circle of radius $10cm$. The resistance between its two diametrically opposite

points, A and B as shown in the figure, is



A. 3Ω

B. $6\pi\Omega$

C. 6Ω

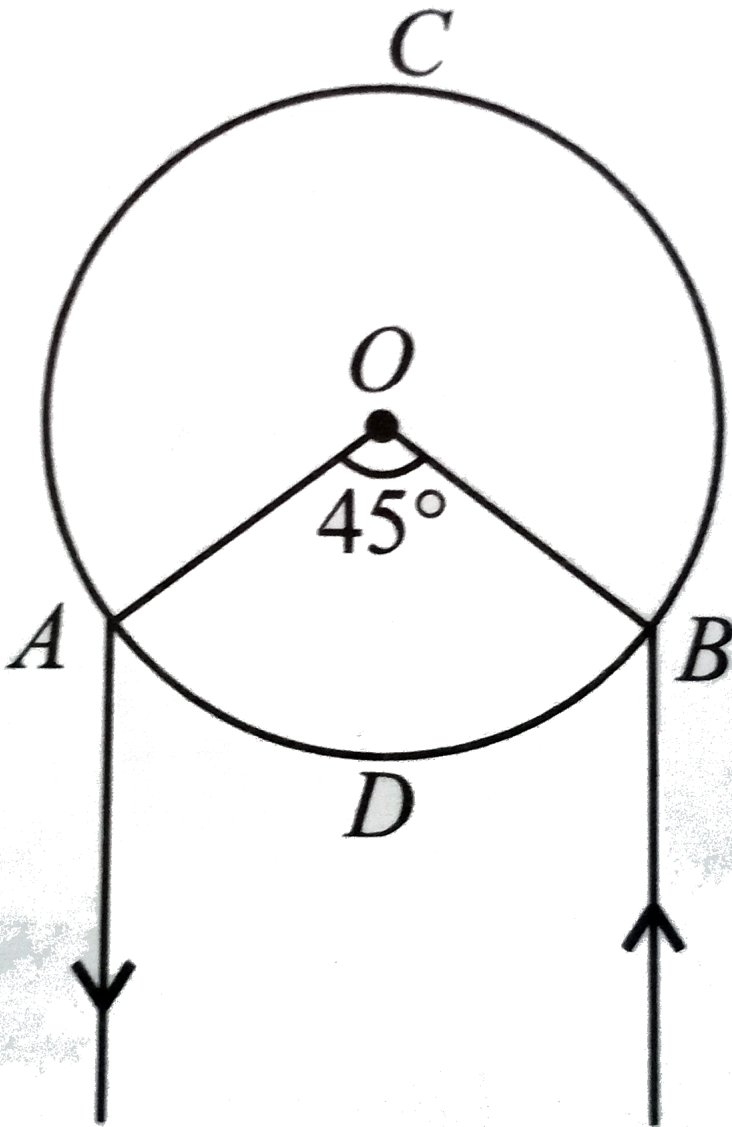
D. $0.6\pi\Omega$

Answer: D



Watch Video Solution

15. A and B are two points on a uniform ring of resistance 15Ω . The $\angle AOB = 45^\circ$. The equivalent resistance between A and B is



A. 1.64Ω

B. 2.84Ω

C. 4.57Ω

D. 2.64Ω

Answer: A



Watch Video Solution

16. Two metal wires of identical dimensions are connected in series. If σ_1 and σ_2 are the conductivities of the metal wires respectively, the effective conductivity of the combination is

A. $\sigma_1 + \sigma_2$

B. $\frac{\sigma_1 + \sigma_2}{2}$

C. $\sqrt{\sigma_1 + \sigma_2}$

D. $\frac{2\sigma_1 + \sigma_2}{\sigma_1 + \sigma_2}$

Answer: D



[Watch Video Solution](#)

17. Three resistors 2Ω , 4Ω and 5Ω are combined in parallel. This combination is connected to a battery of emf 20V and negligible internal Resistance. The total current drawn from the battery is

A. 10A

B. 15A

C. 19A

D. 23A

Answer: C



[Watch Video Solution](#)

18. Three resistors of resistances 3Ω , 4Ω and 5Ω are combined in parallel. This combination is connected to a battery of emf 12V and negligible internal resistance, current through each resistor in ampere is

A. 4,3,2,4

B. 8,7,3,4

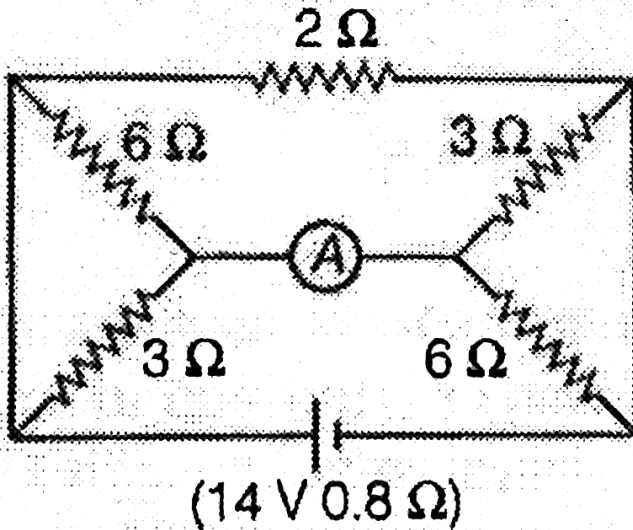
C. 2,5,1,8

D. 5,5,8,2

Answer: A

 Watch Video Solution

19. The reading of ammeter shown in figure is



A. 6.56A

B. 3.28A

C. 2.18A

D. 1.09A

Answer: C



Watch Video Solution

20. Three resistances 2Ω , 4Ω , 5Ω are combined in series and this combination is connected to a battery of 12 V emf and negligible internal resistance. The potential drop across these resistances are

A. (5, 45, 4.36, 2.18) V

B. (2, 18, 5.45, 4.36) V

C. (4.36, 2.18, 5.45) V

D. (2.18, 4.36, 5.45) V

Answer: D



Watch Video Solution

21. In the shown in the given figure, the resistances R_1 and R_2 are respectively



A. 14Ω and 40Ω

B. 40Ω and 44Ω

C. 40Ω and 30Ω

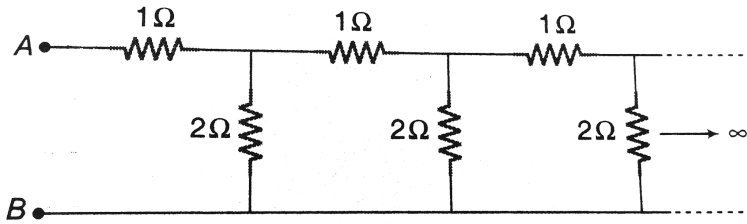
D. 14Ω and 30Ω

Answer: A



View Text Solution

22. An infinite ladder network is constructed with 1Ω and 2Ω resistors as shown. Find the equivalent resistance points A and B .



A. 1Ω

B. 2Ω

C. 3Ω

D. 4Ω

Answer: B



[Watch Video Solution](#)

Cell In Series And In Parallel

1. In parallel combination of n cells, we obtain

A. more voltage

B. more current

C. less voltage

D. less current

Answer: B



[Watch Video Solution](#)

2. If n cells each of emf E and internal resistance r are connected in parallel, then the total emf and internal resistances will be

A. $\varepsilon, \frac{r}{n}$

B. ε, nr

C. $n\varepsilon, \frac{r}{n}$

D. $n\varepsilon, nr$

Answer: A



[Watch Video Solution](#)

3. In the series combination of n cells each cell having emf ε and internal resistance r . If three cells are wrongly connected, then total emf and internal resistance of this combination will be

A. $n\varepsilon, (nr - 3r)$

B. $(n\varepsilon - 2\varepsilon), nr$

C. $(n\varepsilon - 4\varepsilon), nr$

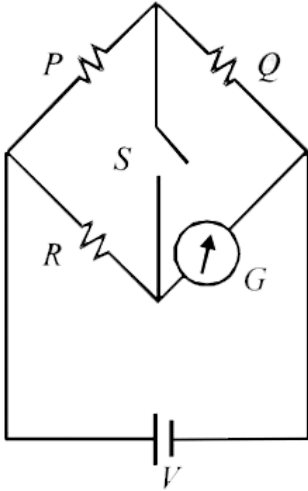
D. $(n\varepsilon - 6\varepsilon), nr$

Answer: D



[Watch Video Solution](#)

1. In the circuit $P \neq R$, the reading of the galvanometer is same with switch S open or closed. Then



A. $I_R = I_G$

B. $I_P = I_G$

C. $I_Q = I_G$

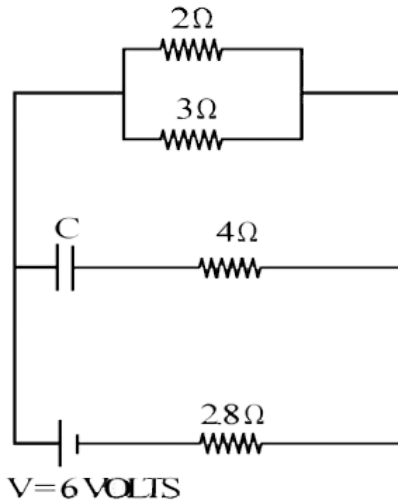
D. $I_Q = I_R$

Answer: A



Watch Video Solution

2. Calculate the steady state current in the 2- ohm resistor shown in the circuit in the figure. The internal resistance of the battery is negligible and the capacitance of the condenser C is 0.2 microfarad.



- A. 0.6A
- B. 0.9A
- C. 1.2A
- D. 0.1A

Answer: B



[Watch Video Solution](#)

3. A straight copper-wire of length $100m$ and cross-sectional area $1.0mm^2$ carries a current $4.5A$. Assuming that one free electron corresponds to each copper atom, find

(a) The time it takes an electron to displace from one end of the wire to the other.

(b) The sum of electrostatic forces acting on all free electrons in the given wire. Given resistivity of copper is $1.72 \times 10^{-8}\Omega - m$ and density of copper is $8.96g/cm^3$.

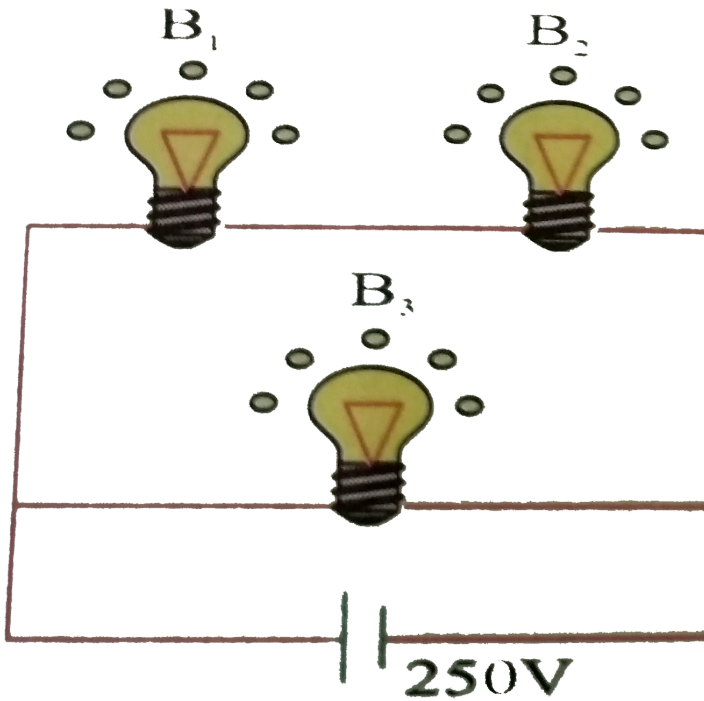
A. The time taken by an electron to displace from one end of the wire to the other is 4×10^6 s.

B. The sum of electric force acting on all free electrons in the given wire is 1×10^6 N.

C. The time taken by an electron to displace from one end of the wire to the other is 3×10^6 s.

D. Both (b) and (c).

Answer: D



4.

A 100 W bulb B_1 and two 60 W bulbs B_2 and B_3 , are connected to a 250V source, as shown in the figure now W_1 , W_2 and W_3 are the output powers of the bulbs B_1 , B_2 and B_3 respectively then

- A. $W_1 > W_2 = W_3$
- B. $W_1 > W_2 > W_3$
- C. $W_1 < W_2 = W_3$

$$D. W_1 < W_2 < W_3$$

Answer: D



Watch Video Solution

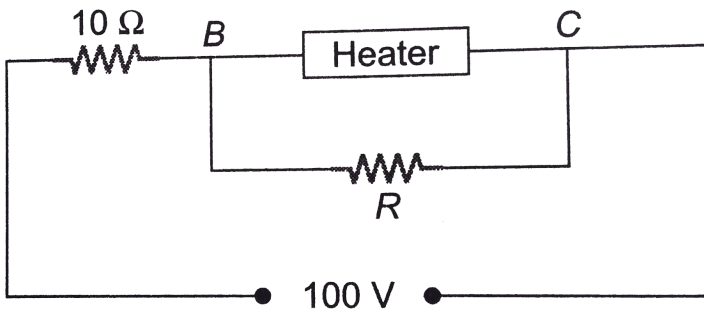
5. Two batteries of emf e_1 and e_2 having internal resistance r_1 and r_2 respectively are connected in series to an external resistance R . Both the batteries are getting discharged. The above described combination of these two batteries has to produce a weaker current than when any one of the batteries is connected to the same resistor. For this requirement to be fulfilled

- A. $\frac{\varepsilon_2}{\varepsilon_1}$ must not lie between $\frac{r_2}{r_1 + R}$ and $\frac{r_1}{r_2 + R}$
- B. $\frac{\varepsilon_2}{\varepsilon_1}$ must not lie between $\frac{r_2}{r_1 + R}$ and $\frac{r_2 + R}{r_1}$
- C. $\frac{\varepsilon_2}{\varepsilon_1}$ must lie between $\frac{r_2}{r_1 + R}$ and $\frac{r_1}{r_2 + R}$
- D. $\frac{\varepsilon_2}{\varepsilon_1}$ must not lie between $\frac{r_2}{r_1 + R}$ and $\frac{r_2 + R}{r_1}$

Answer: B



6. A heater is designed to operate with a power of $1000W$ in a $100V$ line. It is connected in combination with a resistance of 10Ω and a resistance R , to a $100V$ mains as shown in figure. What will be the value of R so that the heater operates with a power of $62.5W$?



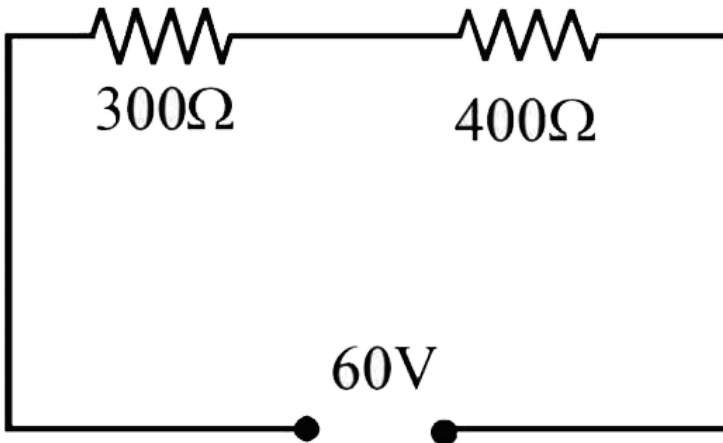
- A. 15Ω
- B. 10Ω
- C. 5Ω
- D. 25Ω

Answer: C



7. State ohm's law.

In the circuit shown in figure, a voltmeter reads 30 volts when it is connected across 400 ohm resistance. Calculate what the same voltmeter will read when it is connected across the 300 ohm resistance.



- A. 30V
- B. 12.5V
- C. 15V
- D. 22.5V

Answer: D



[Watch Video Solution](#)

8. It is desired to make a long cylindrical conductor whose temperature coefficient of resistivity at $20^\circ C$ will be close to zero. If such a conductor is made by assembling alternate disks of iron and carbon, find the ratio of the thickness of a carbon disk to that an iron disk.

(For carbon, $p = 3500 \times 10^{-8} \Omega m$ and $\alpha = -0.50 \times 10^{-3} .^\circ C^{-1}$ for iron)

A. 0.36

B. 0.036

C. 1

D. 2

Answer: B



[Watch Video Solution](#)

1. Consider a current carrying wire (current I) in the shape of a circle. Note that as the current progresses along the wire, the direction of \vec{J} (current density) changes in an exact manner, while the current I remains unaffected. The agent that is essentially responsible for is

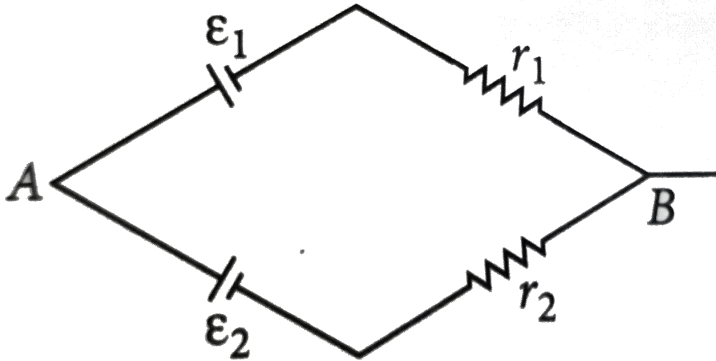
- A. source of e.m.f.
- B. electric field produced by charges accumulated on the surface of wire.
- C. the charges just behind a given segment of wire which push them just right way by repulsion
- D. the charges just behind a given segment of wire which push them just right way by repulsion

Answer: B



[Watch Video Solution](#)

2. Two batteries of emf E_1 and E_2 ($E_2 > E_1$) and internal resistances r_1 and r_2 respectively are connected in parallel as shown in figure.



A. Two batteries of emf E_1 and E_2 ($E_2 > E_1$) and internal resistances r_1 and r_2 respectively are connected in parallel as shown in figure.

B. The equivalent emf E_{eq} is smaller than E

C. Two batteries of emf E_1 and E_2 ($E_2 > E_1$) and internal resistances r_1 and r_2 respectively are connected in parallel as shown in figure.

D.

Answer: A



View Text Solution

3. A resistance R is to be measured using a meter bridge. Student chooses the standard resistance S to be 100Ω . He finds the null point at $l_1 = 2.9\text{cm}$. He is told to attempt to improve the accuracy. Which of the following is a useful way?

- A. He should measure l_1 more accurately.
- B. He should change S to $1000\ \Omega$ and repeat the experiment.
- C. He should change S to $3\ \Omega$ and repeat the experiment
- D. He should give up hope of a more accurate measurement with a meter bridge.

Answer: C



Watch Video Solution

4. Two cells of emfs approximately 5V and 10V are to be accurately compared using a potentiometer of length 400 cm .

- A. The battery that runs the potentiometer should have voltage of 8 V.
- B. The battery of potentiometer can have a voltage of 15 V and R adjusted so that the potential drop across the wire slightly exceeds 10 V.
- C. The first portion of 50 cm of wire itself should have a potential drop of 10 V
- D. Potentiometer is usually used for comparing resistances and not voltages.

Answer: B



[Watch Video Solution](#)

5. A metal rod of the length 10cm and a rectangular cross-section of 1 cm x $\frac{1}{2}$ cm is connected to a battery across opposite faces. The resistance will be

A. maximum when the battery is connected across

- B. maximum when the battery is connected across
- C. maximum when the battery is connected across
- D. same irrespective of the three faces.

Answer: A



[Watch Video Solution](#)

6. Which of the following characteristics of electrons determines the current in a conductor?

- A. Drift velocity alone
- B. Thermal velocity alone
- C. Both drift velocity and thermal velocity
- D. Neither drift nor thermal velocity

Answer: A



[Watch Video Solution](#)

Assertion And Reason

1. Assertion : Electrons which constitute the current are negatively charged.

Reason: Current carrying wire is negatively charged.

A. If both assertion and reason are true and reason is the correct explanation of assertion.

B. If both assertion and reason are true and reason is not the correct explanation of assertion.

C. If assertion is false but reason is true.

D. If assertion is true but reason is false.

Answer: C



[Watch Video Solution](#)

2. Assertion : Current can be represented with an arrow Reason: Current is a vector quantity.

- A. If both assertion and reason are true and reason is the correct explanation of assertion.
- B. If both assertion and reason are true and reason is not the correct explanation of assertion.
- C. If assertion is true but reason is false
- D. If both assertion and reason are false.

Answer: C



[Watch Video Solution](#)

3. Assertion : Current flows in a conductor only when there is an external electric field within the conductor.

Reason: The drift velocity of the electrons is directly proportional to the electric field.

A. If both assertion and reason are true and reason is the correct explanation of assertion.

B. If both assertion and reason are true and reason is not the correct explanation of assertion.

C.

D. If assertion is true but reason is false.

Answer: A



Watch Video Solution

4. Assertion: The bending of an insulated wire increase the resistance of wire

Reason : The drift velocity of electron in this wire decreases

A. If both assertion and reason are true and reason is the correct explanation of assertion.

B. If both assertion and reason are true and reason is not the correct explanation of assertion.

C.

D. If assertion is true but reason is false.

Answer: D

 [Watch Video Solution](#)

5. Assertion: Drift velocity of electrons is independent of time.

Reason: Electrons are accelerated in the presence of electric field.

A. If both assertion and reason are true and reason is the correct explanation of assertion.

B. If both assertion and reason are true and reason is not the correct explanation of assertion.

C. If assertion is false but reason is true.

D. If assertion is true but reason is false.

Answer: B



Watch Video Solution

6. Assertion: For good conductors, the I-V graph is a perfect straight line inclined to current axis.

Reason: By Ohm's law, voltage across the ends of a conductor is directly proportional to the resistance of the conductor.

- A. If both assertion and reason are true and reason is the correct explanation of assertion.
- B. If both assertion and reason are true and reason is not the correct explanation of assertion.
- C. If assertion is false but reason is true.
- D. If assertion is true but reason is false.

Answer: D



[Watch Video Solution](#)

7. Assertion: The resistance of a conductor decreases with increase in cross sectional area.

Reason: On increasing the cross sectional area of a conductor, more current will flow through the conductor.

- A. If both assertion and reason are true and reason is the correct explanation of assertion.
- B. If both assertion and reason are true and reason is not the correct explanation of assertion.
- C. If assertion is false but reason is true.
- D. If assertion is true but reason is false.

Answer: A



[Watch Video Solution](#)

8. Assertion : Insulators do not allow flow of current through them.

Reason: Insulators have no free charge carrier

A. If both assertion and reason are true and reason is the correct explanation of assertion.

B. If both assertion and reason are true and reason is not the correct explanation of assertion.

C.

D. If assertion is true but reason is false.

Answer: A



[Watch Video Solution](#)

9. Assertion: Ohm's law is not valid if current depends on voltage non-linearly.

Reason: Ohm's law is a fundamental law of nature.

- A. If both assertion and reason are true and reason is the correct explanation of assertion.
- B. If both assertion and reason are true and reason is not the correct explanation of assertion.
- C. If assertion is false but reason is true.
- D. If assertion is true but reason is false.

Answer: C



Watch Video Solution

10. Assertion : Electromotive force is a force which helps the electrons to flow and produce current.

Reason : Electromotive force is independent of the voltage across the cell.

- A. If both assertion and reason are true and reason is the correct explanation of assertion.
- B. If both assertion and reason are true and reason is not the correct explanation of assertion.
- C. If assertion is false but reason is true.
- D. If assertion is true but reason is false.

Answer: D



Watch Video Solution

11. Assertion : Some electric appliance have three pins, even though if we remove the top pin, it will continue working.

Reason: The third pin is used only as a safety device.

- A. If both assertion and reason are true and reason is the correct explanation of assertion.

B. If both assertion and reason are true and reason is not the correct explanation of assertion.

C. If assertion is false but reason is true

D. If assertion is true but reason is false.

Answer: A

 [Watch Video Solution](#)

12. Assertion : Current is passed through a metallic wire, heating it red. Half of its portion is cooled by cold water jacket, then rest of the half portion become more hot.

Reason: Resistances decreases due to decrease in temperature and so current through wire increases.

A. If both assertion and reason are true and reason is the correct explanation of assertion.

B. If both assertion and reason are true and reason is not the correct explanation of assertion.

C. If assertion is false but reason is true

D. If assertion is true but reason is false.

Answer: A

 [Watch Video Solution](#)

13. Assertion: Kirchhoff's junction rule can be applied to a junction of several lines or a point in a line.

Reason : When steady current is flowing, there is no accumulation of charges at any junction in series with a galvanometer.

A. If both assertion and reason are true and reason is the correct explanation of assertion.

B. If both assertion and reason are true and reason is not the correct explanation of assertion.

C. If assertion is false but reason is true.

D. If assertion is true but reason is false.

Answer: A



Watch Video Solution

14. Assertion : In metre bridge experiment, a high resistance is always connected in series with a galvanometer.

Reason : As resistance increases, current through the circuit increases,

A. If both assertion and reason are true and reason is the correct explanation of assertion.

B. If both assertion and reason are true and reason is not the correct explanation of assertion.

C.

D. If assertion is true but reason is false.

Answer: C

 [Watch Video Solution](#)

15. Assertion : Potentiometer is used only to compare potential differences.

Reason: The potentiometer draws current from the voltage source being measured .

- A. If both assertion and reason are true and reason is the correct explanation of assertion.
- B. If both assertion and reason are true and reason is not the correct explanation of assertion.
- C. If assertion is false but reason is true.
- D. If assertion is true but reason is false.

Answer: D

 [Watch Video Solution](#)

Others

1. The electrical resistance of a conductor depends upon

- A. size of conductor
- B. temperature of conductor
- C. geometry of conductor
- D. all of these

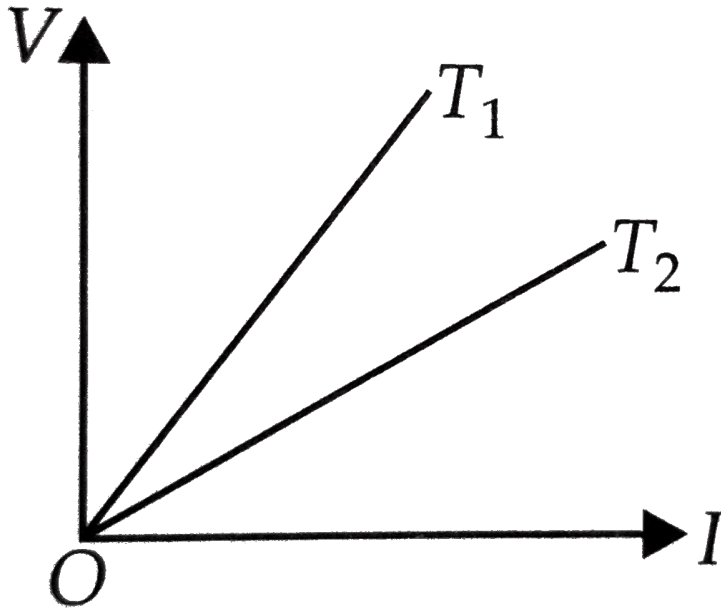
Answer: D



[Watch Video Solution](#)

2. The voltage V and current I v graphs for a conductor at two different temperatures T_1 and T_2 are shown in the figure. The relation between

T_1 and T_2 is



A. $T_1 > T_2$

B. $T_1 < T_2$

C. $T_1 = T_2$

D. $T_1 = \frac{1}{T_2}$

Answer: A



Watch Video Solution

3. A wire of resistance 4Ω is used to wind a coil of radius 7 cm. The wire has a diameter of 1.4 mm and the specific resistance of its material is $2 \times 10^{-7}\Omega m$. Find the number of turns in the coil.

A. 50

B. 40

C. 60

D. 70

Answer: D



[Watch Video Solution](#)

4. A cylindrical rod is reformed to half of its original length keeping volume constant. If its resistance before this change were R, then the resistance after reformation of rod will be

A. R

B. $R/4$

C. $3R/4$

D. $R/2$

Answer: B



[Watch Video Solution](#)

5. A wire with 15Ω resistance is stretched by one tenth of its original length and volume of wire is kept constant. Then its resistance will be

A. 15.18Ω

B. 81.15Ω

C. 51.18Ω

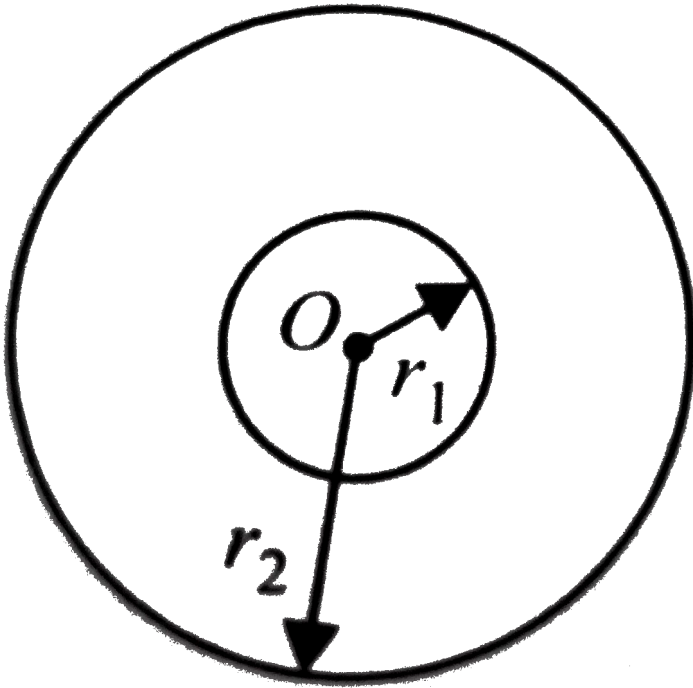
D. 18.15Ω

Answer: D



[Watch Video Solution](#)

6. Space between two concentric spheres of radii r_1 and r_2 such that $r_1 < r_2$ is filled with a material of resistivity ρ . Find the resistance between inner and outer surface of the material



- A. $\frac{r_1}{r_2} \frac{\rho}{2}$
- B. $\frac{r_2 - r_1}{r_1 r_2} \frac{\rho}{4\pi}$
- C. $\frac{r_1 r_2}{r_2 - r_1} \frac{\rho}{4\pi}$

D. none of these.

Answer: B



Watch Video Solution

7. The current density varies radial distance r as $J = ar^2$, in a cylindrical wire of radius R . The current passing through the wire between radial distance $R/3$ and $R/2$ is,

A. $\frac{65\pi a R^4}{2592}$

B. $\frac{25\pi a R^4}{72}$

C. $\frac{65\pi a^2 R^3}{2938}$

D. $\frac{81\pi a^2 R^4}{144}$

Answer: A



Watch Video Solution

8. Match the Column I with Column II.

Column I		Column II	
(A)	Ohm's law is applicable to	(p)	metals
(B)	Ohm's law is not applicable to	(q)	greater resistivity
(C)	alloys have	(r)	diodes, electrolytes, semiconductors

A. A-r, B-q, C-p

B. A-p, B-r, C-q

C. A-r, B-p, C-q

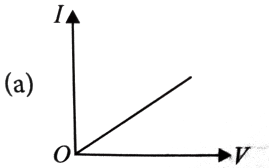
D. A-q, B-r, C-p

Answer: B

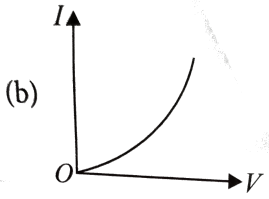


Watch Video Solution

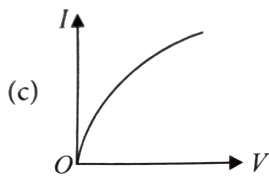
9. Which of the following I-V graph represents ohmic conductors?



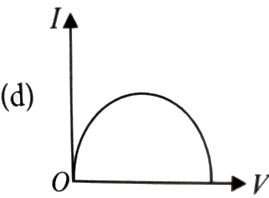
A.



B.



C.

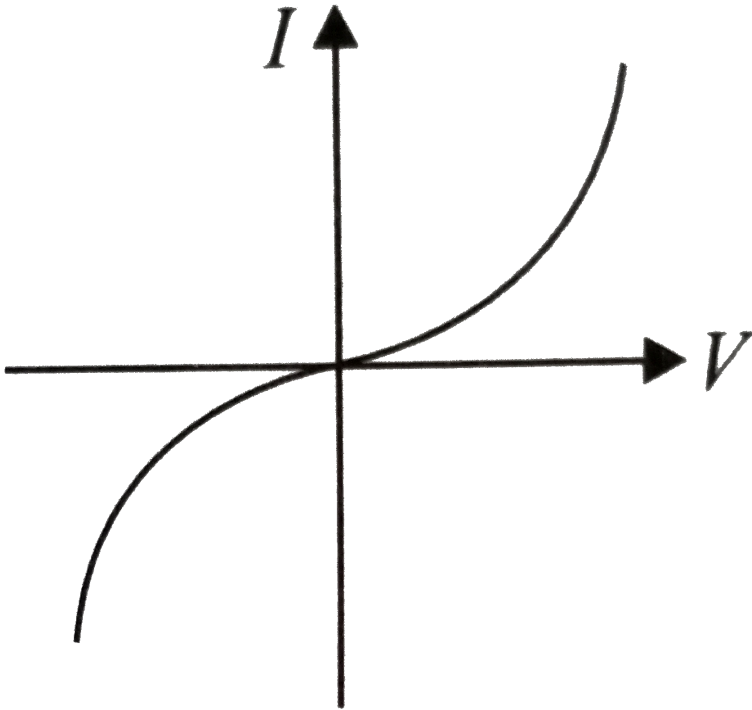


D.

Answer: A

 [Watch Video Solution](#)

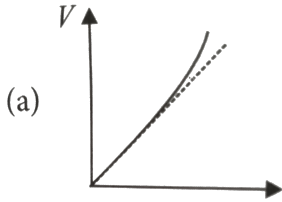
10. The I-V characteristics shown in the figure represents



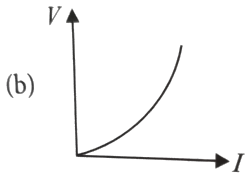
- A. ohmic conductors
- B. non-ohmic conductors
- C. insulators
- D. superconductors

Answer: B

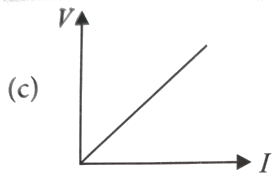
11. Which of the following is correct for V-I graph of a good conductor?



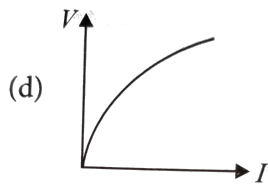
A.



B.



C.



D.

Answer: A

12. Point out the right statements about the validity of, Kirchhoff's junction rule

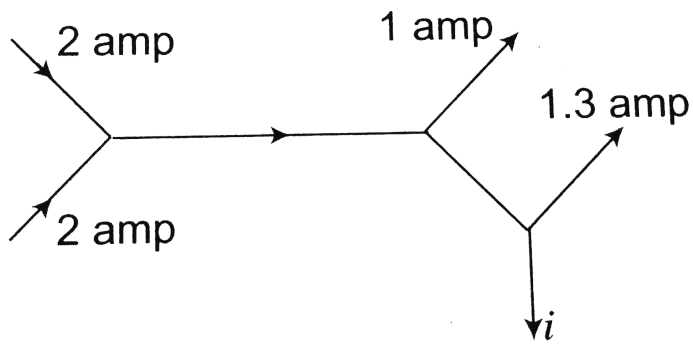
- A. it is based on conservation of charge
- B. outgoing currents add up and are equal to incoming currents at a junction.
- C. bending or reorienting the wire does not change the validity of Kirchhoff's junction rule.
- D. all of above.

Answer: D



[Watch Video Solution](#)

13. The figure below shows current in a part of electric circuit. The current i is



A. 1.7A

B. 3.7A

C. 1.3A

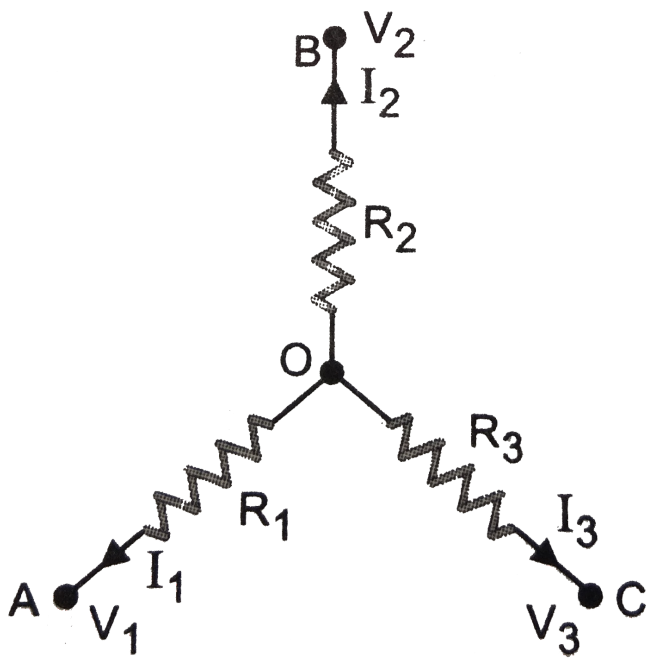
D. 1A

Answer: A



[Watch Video Solution](#)

14. A circuit has a section ABC if the potential at point A , B and C are V_1 , V_2 and V_3 respectively, calculate the potential at point O



A. $V_1 + V_2 + V_3$

B. $\left[\frac{V_1 + V_2 + V_3}{R_1 + R_2 + R_3} \right] \left[\frac{1}{R_1 + R_2 + R_3} \right]^{-1}$

C. zero

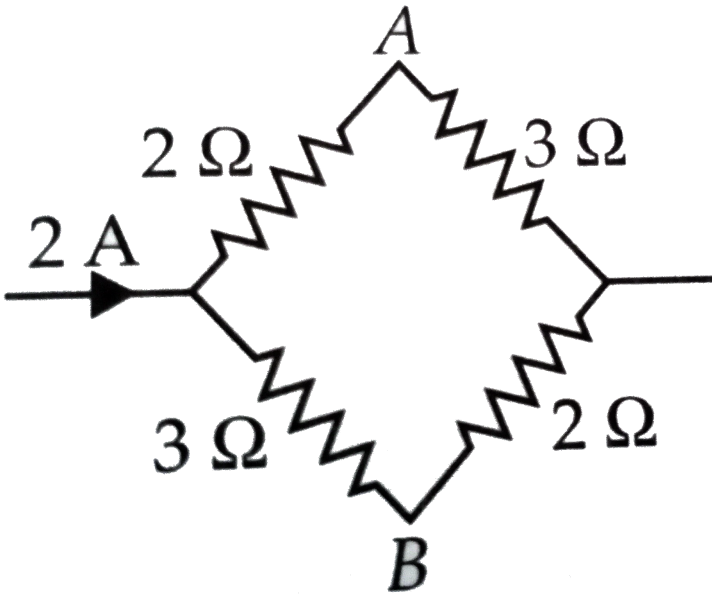
D. $\left[\frac{V_1 + V_2 + V_3}{R_1 + R_2 + R_3} \right] (R_1 + R_2 + R_3)$

Answer: B



Watch Video Solution

15. The potential difference between A and B as shown in figure is



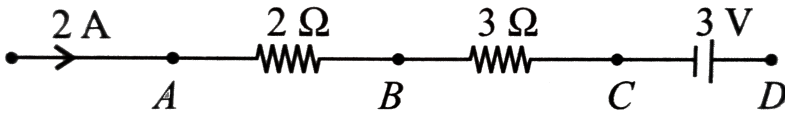
- A. 1 V
- B. 2 V
- C. 3 V
- D. 4 V

Answer: A



[Watch Video Solution](#)

16. In the given circuit the potential at point B is zero, the potential at points A and D will be



A. $V_A = 4V, V_D = 9V$

B. $V_A = 3V, V_D = 4V$

C. $V_A = 9V, V_D = 3V$

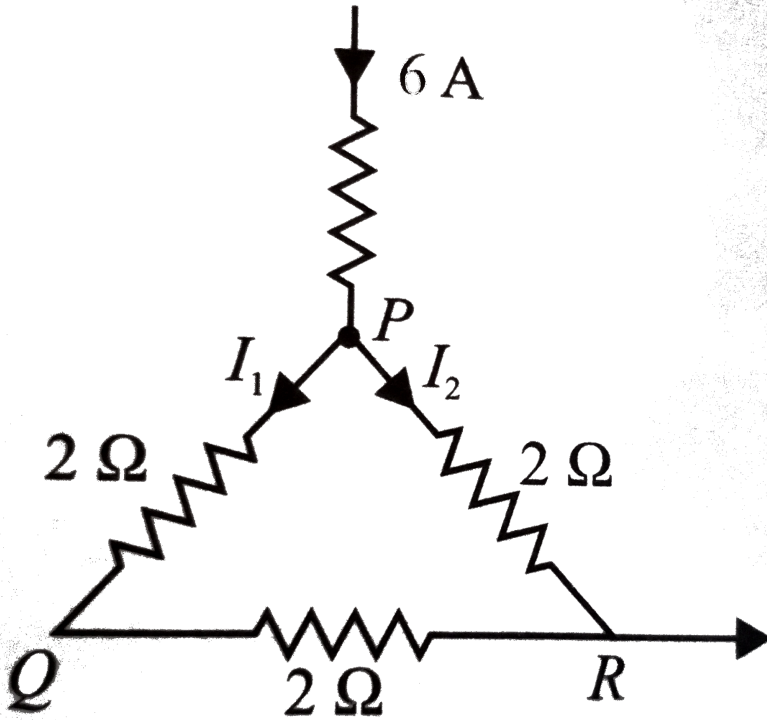
D. $V_A = 4V, V_D = 3V$

Answer: D

 [Watch Video Solution](#)

17. A current of 6 A enters one corner P of an equilateral triangle PQR having 3 wires of resistances 2 Ω each and leaves by the corner R. Then

the currents I_1 and I_2 are



A. 2A,4A

B. 4A,2A

C. 1A,2A

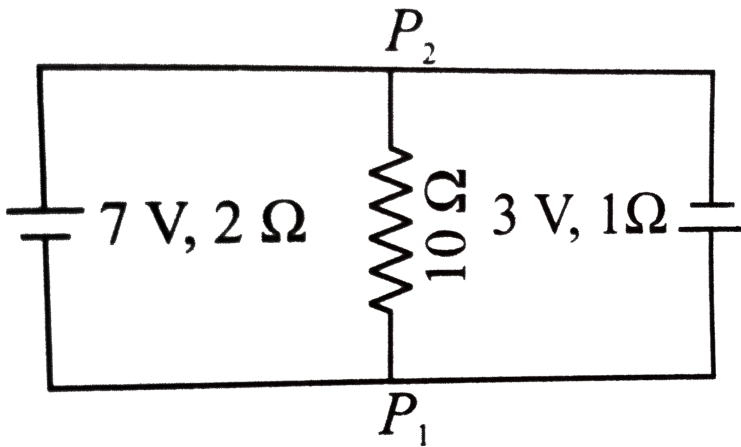
D. 2A,3A

Answer: A



Watch Video Solution

18. 7 V battery with internal resistance 2Ω and 3V battery with internal resistance 1Ω are connected to a 10Ω resistors as shown in figure, the current in 10Ω resistor is



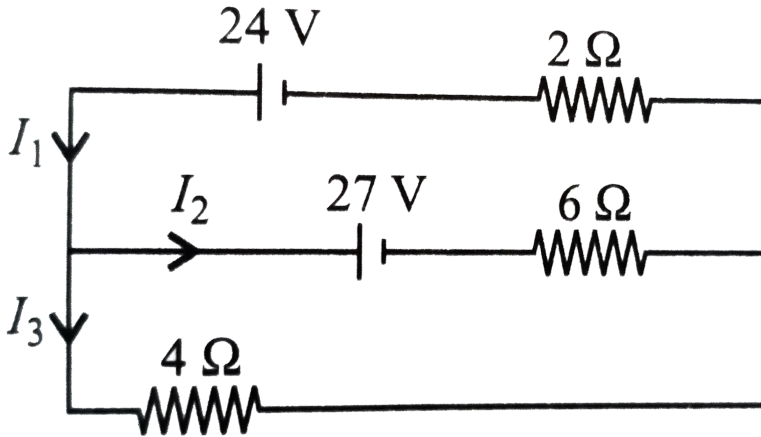
- A. 0.27A
- B. 0.31A
- C. 0.031A
- D. 0.53

Answer: C



Watch Video Solution

19. In the circuit shown, the value of currents I_1 , I_2 and I_3 are



A. $3A, -\frac{3A}{2}, \frac{9}{2}A$

B. $\frac{9}{2}A, -\frac{3}{2}A$

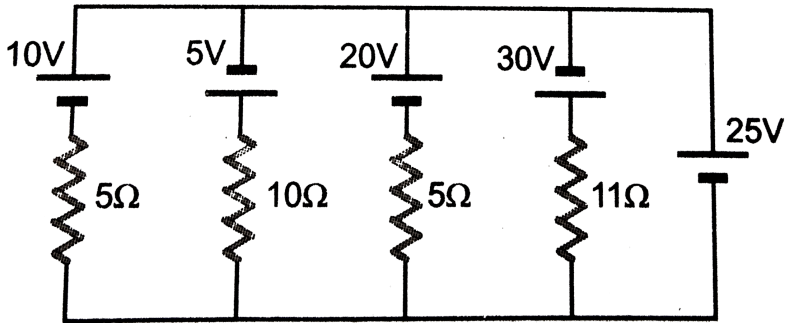
C. $5A, 4A, -3A$

D. $7A, \frac{5}{4}A, \frac{9}{2}A$

Answer: A

 Watch Video Solution

20. In the circuit shown in figure the current flowing through 25 V cell is



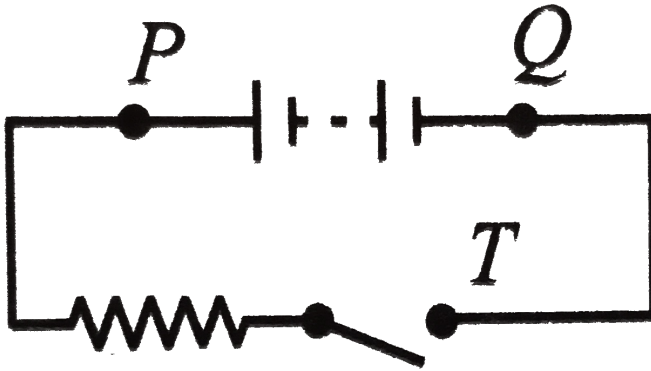
- A. 7.2A
- B. 10A
- C. 12A
- D. 14.2A

Answer: C

[Watch Video Solution](#)

21. A battery, an open switch and a resistor are connected in series as shown in figure. Consider the following three statements concerning the

circuit. A voltmeter will read zero if it is connected across points



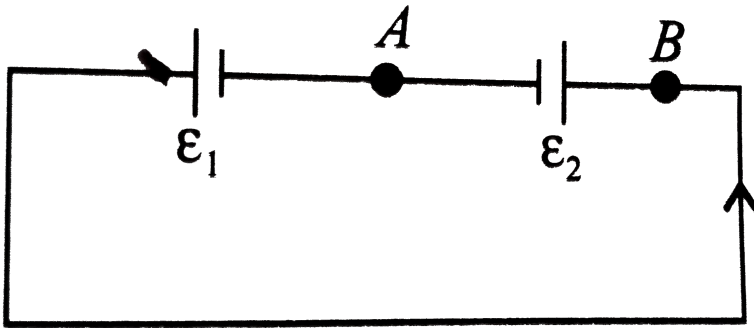
(i) P and T (ii) P and Q (iii) Q and T Which one of the above is/are true?

- A. only i
- B. only iii
- C. only I and iii
- D. I,ii and iii

Answer: C

 [Watch Video Solution](#)

22. Two cells e_1 and e_2 connected in opposition to each other as shown in figure. The cell of emf 9 V and internal resistance 3Ω the cell is of emf 7V and internal resistance 7Ω . The potential difference between the points A and B is



- A. 8.4V
- B. 5.6V
- C. 7.8V
- D. 6.6V

Answer: A

 Watch Video Solution

