



MATHS

BOOKS - MBD

RATIO AND PROPORTION

Example

1. In a class, there are 20 boys and 40 girls. What is the ratio of the number of boys to the number of girls?



[Watch Video Solution](#)

2. Ravi walks 6 km in an hour while Roshan walks 4 km in an hour. What is the ratio of the distance covered by Ravi to the distance covered by Roshan?



[Watch Video Solution](#)

3. Saurabh takes 15 minutes to reach school from his house and Sachin takes one hour to

reach school from house. Find the ratio of the time taken by Saurabh to the time taken by Sachin



[Watch Video Solution](#)

4. Cost of a toffee is 50 paise and cost of a chocolate is $Rs10$. Find the ratio of the cost of a toffee to the cost of a chocolate.

A. 1 : 2

B. 1 : 20

C. 1 : 5

D. 1 : 25

Answer: B



Watch Video Solution

5. In a school, there were 73 holidays in one year. What is the ratio of the number of holidays to the number of days in one year?



Watch Video Solution

6. There are 20 girls and 15 boys in a class.

What is the ratio of number of girls to the number of boys?



[Watch Video Solution](#)

7. There are 20 girls and 15 boys in a class.

What is the ratio of number of girls to the total number of students in the class?



[Watch Video Solution](#)

8. Out of 30 students in a class, 6 like football, 12 like cricket and remaining like tennis. Find the ratio of :

Number of student liking football to number of students liking tennis.



[Watch Video Solution](#)

9. Out of 30 students in a class, 6 like football, 12 like cricket and remaining like tennis. Find the ratio of :

Number of students liking cricket to total number of students.



[Watch Video Solution](#)

10. See the figure and find the ratio of :

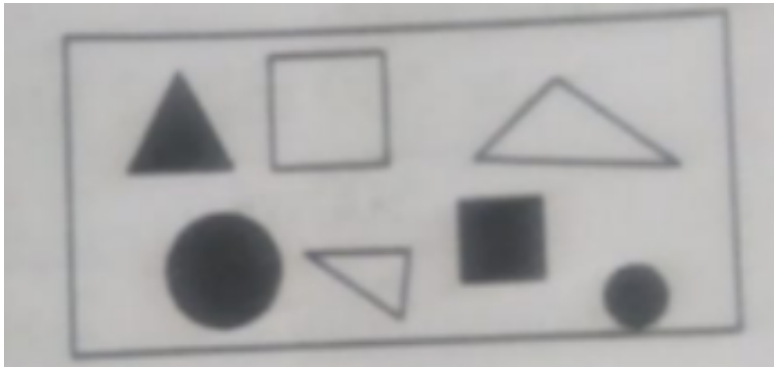
Number of triangles to the number of circles inside the rectangle.



[Watch Video Solution](#)

11. See the figure and find the ratio of :

Number of squares to all the figures inside the rectangle.



[Watch Video Solution](#)

12. See the figure and find the ratio of :

Number of circles to all the figures inside the

rectangle.



[Watch Video Solution](#)

13. Distance travelled by Hamid and Akhtar in an hour are 9 km and 12 km. Find the ratio of speed of Hamid to the speed of Akhtar.



[Watch Video Solution](#)

14. Fill in the following blanks:

$$\frac{15}{18} = \frac{\square}{6} = \frac{10}{\square} = \frac{\square}{30}$$



Watch Video Solution

15. Find the ratio of the following :

$$81 \rightarrow 108$$



Watch Video Solution

16. Find the ratio of the following :

98 \rightarrow 63



Watch Video Solution

17. Find the ratio of the following :

$33km \rightarrow 121km$



Watch Video Solution

18. Find the ratio of the following :

30 min *utes* \rightarrow 45 min *utes*



Watch Video Solution

19. Find the ratio of the following:

30 min *utes* *ot* 1.5 *hours*



Watch Video Solution

20. Find the ratio of the following:

$$40\text{cm} \rightarrow 1.5\text{m}$$



Watch Video Solution

21. Find the ratio of the following:

$$55\text{paise} \rightarrow \text{Re.}1$$



Watch Video Solution

22. Find the ratio of the following:

$500\text{ml} \rightarrow 2\text{litre}$



Watch Video Solution

23. In a year, Seema earns Rs.1,50,000 and saves

Rs 50,000. Find the ratio of :

Money that Seema earns to the money she saves.



Watch Video Solution

24. In a year, Seema earns Rs.1,50,000 and saves Rs 50,000. Find the ratio of :

Money that she saves to the money she spends.



Watch Video Solution

25. There are 102 teachers in a school of 3300 students. Find ratio of the number of teachers to the number of students.



Watch Video Solution

26. In a college out of 4320 tudents,2300 are girls.Find the ratio of :

Number of girls to the total number of students.



Watch Video Solution

27. In a college out of 4320 tudents,2300 are girls.Find the ratio of :

Number of boys to the number of girls.



Watch Video Solution

28. In a college out of 4320 students, 2300 are girls. Find the ratio of :

Number of boys to the total number of students.



Watch Video Solution

29. Out of 1800 students in a school, 750 opted basketball, 800 opted cricket and remaining opted table tennis. If a student can opt only one game, find the ratio of:

Number of students who opted basketball to number of students who opted table tennis.



[Watch Video Solution](#)

30. Out of 1800 students in a school, 750 opted basketball, 800 opted cricket and remaining opted table tennis. If a student can opt only one game, find the ratio of:

Number of students who opted cricket to the number of students who opted basketball.



[Watch Video Solution](#)

31. Out of 1800 students in a school, 750 opted basketball, 800 opted cricket and remaining opted table tennis. If a student can opt only one game, find the ratio of:

Number of students who opted basketball to the total number of students.



Watch Video Solution

32. Cost of a dozen pens is Rs.180 and cost of 8 ball pens is Rs.56. Find the ratio of cost of a

pen to the cost of a ball pen.



[Watch Video Solution](#)

33. Consider the statement: Ratio of breadth and length of a hall is 2 : 5. Complete the following table that shows some possible breadth and lengths of the hall.



[Watch Video Solution](#)

34. Divide 20 pens between Sheela and Sangeeta in the ratio of 3:2.



Watch Video Solution

35. Mother wants to divide Rs.36 amount her daughters Shreya and Bhoomika in the ratio of their ages.If age of Shreya is 15 years and age of Bhoomika is 12 years,find how much Shreya and Bhoomika will get.



Watch Video Solution

36. Present age of father is 42 years and his son 14 years. Find the ratio of:

Present age of father to the present age of son.



Watch Video Solution

37. Present age of father is 42 years and his son 14 years. Find the ratio of:

Age of the father to the age of son, when son was 12 years old.



[Watch Video Solution](#)

38. Present age of father is 42 years and his son 14 years. Find the ratio of:

Age of father after 10 years to the age of son after 10 years.



[Watch Video Solution](#)

39. Present age of father is 42 years and his son 14 years. Find the ratio of:

Age of father to the age of son when father was 30 years old.



[Watch Video Solution](#)

40. Check whether the given ratios are equal, i.e., they are in proportion. If yes, then write them in the proper form.

1:5 and 3:15



[Watch Video Solution](#)

41. Check whether the given ratios are equal,i.e., they are in proportion.If yes,then write them in the proper form.

2: 9 and 18: 81



Watch Video Solution

42. Check whether the given ratios are equal,i.e., they are in proportion.If yes,then write them in the proper form.

15: 45 and 5: 25





[Watch Video Solution](#)

43. Check whether the given ratios are equal, i.e., they are in proportion. If yes, then write them in the proper form.

4: 12 and 9: 27



[Watch Video Solution](#)

44. Check whether the given ratios are equal, i.e., they are in proportion. If yes, then

write them in the proper form.

Rs.10 to Rs.15 and 4 to 6.



[Watch Video Solution](#)

45. Determine if the following are in proportion:

15, 45, 40, 120



[Watch Video Solution](#)

46. Determine if the following are in proportion:

33, 121, 9, 96



Watch Video Solution

47. Determine if the following are in proportion:

24, 28, 36, 48



Watch Video Solution

48. Determine if the following are in proportion:

32, 48, 70, 210



Watch Video Solution

49. Determine if the following are in proportion:

4, 6, 8, 12



Watch Video Solution

50. Determine if the following are in proportion:

33, 44, 75, 100



[Watch Video Solution](#)

51. Write True (T) or False(F) against each of the following statements:

16 : 24 :: 20 : 30



[Watch Video Solution](#)

52. Write True (T) or False(F) against each of the following statements:

$$21:6 :: 35:10$$



Watch Video Solution

53. Write True (T) or False(F) against each of the following statements:

$$12:18 :: 28:12$$



Watch Video Solution

54. Write True(T) or False(F) against each of the following statements:

8:9:24:27



[Watch Video Solution](#)

55. Write True (T) or False(F) against each of the following statements:

5.2:3.9::3:4



[Watch Video Solution](#)

56. Write True (T) or False(F) against each of the following statements:

$$0.9 : 0.36 :: 10 : 4$$



Watch Video Solution

57. Are the following statements true?

$$40 \text{ persons} : 200 \text{ persons} = \text{Rs.}15 : \text{Rs.}75$$



Watch Video Solution

58. Are the following statements true?

$$7.5\textit{litres} : 15\textit{litres} = 5\textit{kg} : 10\textit{kg}$$



Watch Video Solution

59. Are the following statements true?

$$99\textit{kg} : 45\textit{kg} = \textit{Rs.}44 : \textit{Rs.}20$$



Watch Video Solution

60. Are the following statements true?

$$32m : 64m = 6 \text{ sec} : 12 \text{ sec}$$



Watch Video Solution

61. Are the following statements true?

$$45km : 60km = 12 \text{ hours} : 15 \text{ hours}.$$



Watch Video Solution

62. Determine if the following ratios form a proportion. Also, write the middle terms and extreme terms where the ratios form a proportion.

25 cm : 1 m and Rs.40 : Rs.160



Watch Video Solution

63. Determine if the following ratios form a proportion. Also, write the middle terms and extreme terms where the ratios form a

proportion.

39 litres:65 litres and 6 bottles:10 bottles



[Watch Video Solution](#)

64. Determine if the following ratios form a proportion. Also, write the middle terms and extreme terms where the ratios form a proportion.

2kg:80 kg and 25 g:625 g.



[Watch Video Solution](#)

65. Determine if the following ratios form a proportion. Also, write the middle terms and extreme terms where the ratios form a proportion.

200 ml:2.5 litre and Rs.4:Rs.50.



Watch Video Solution

66. If the cost of 7m of cloth is Rs.294, find the cost of 5m of cloth.



Watch Video Solution

67. Ekta earns Rs.1500 in 10 days.How much she will earn in 30 days?



Watch Video Solution

68. If it has rained 276 mm in the last 3 days,how many cm of rain will fall in one full week (7 days)?Assume that the rain continues to fall at the same rate.



Watch Video Solution

69. Cost of 5kg of wheat is Rs.30.50.

What will be the cost of 8 kg of wheat?



Watch Video Solution

70. Cost of 5kg of wheat is Rs.30.50.

What quantity of wheat can be purchased in
Rs.61?



Watch Video Solution

71. The temperature dropped 15 degree celsius in the last 30 days.If the rate of temperature drop remains the same,how many degrees will the temperature drop in the next ten days?



[Watch Video Solution](#)

72. Shaina pays Rs.7500 as rent for 3 months.How much does she have to pay for a whole year,if the rent per month remains same?





[Watch Video Solution](#)

73. Cost of 4 dozens of banana is Rs.60.How many bananas can be purchased for Rs.12.50.



[Watch Video Solution](#)

74. the weight of 72 books is 9 kg.What is the weight of 40 such books?



[Watch Video Solution](#)

75. A truck requires 108 liters of diesel for covering a distance of 594 km. How much diesel will be required by the truck to cover a distance of 1650 km?



Watch Video Solution

76. Raju purchases 10 pens for Rs.150 and Manish buys 7 pens Rs.84. Can you say who got the pens cheaper?



Watch Video Solution

77. Anish made 42 runs in 6 overs and Anup made 63 runs in 7 overs. Who made more runs per over?



[Watch Video Solution](#)

Exercise

1. There are 45 persons working in an office. If the number of females is 25 and the remaining are males, find the ratio of :
the number of females to number of males.



[Watch Video Solution](#)

2. The ratio of number of males to number of females in a club are 7:4. If there are 84 males in the club, the total number of members in the club are



[Watch Video Solution](#)

3. Give two equivalent ratios of 5:4.



[Watch Video Solution](#)

4. Fill in the following blanks:

$$\frac{14}{21} = \frac{\square}{3} = \frac{6}{\square}.$$



[Watch Video Solution](#)

5. Ratio of distance fo the school from Mary's home to the distance of the school from John's home is 2:1

Who lives nearer to the school?



[Watch Video Solution](#)

6. Ratio of distance of the school from Mary's home to the distance of the school from Jhon's home is 2:1. a) Who lives nearer to the school?
b) Complete the following table which shows some possible distance that Mary and John could live from the school.



[Watch Video Solution](#)

7. Ratio of distance fo the school from Mary's home to the distance of the school from John's

home is 2:1

If the ratio of distance of Mary's home to the distance of Kalam's home from school is 1:2, then who lives nearer to the school.



[Watch Video Solution](#)

8. Divide Rs.60 in the ratio 1:2 between Kriti and Kiran.



[Watch Video Solution](#)

9. In a class, there are 20 boys and 40 girls. What is the ratio of the number of boys to the number of girls?



[Watch Video Solution](#)

10. Ravi walks 6 km in an hour while Roshan walks 4 km in an hour. What is the ratio of the distance covered by Ravi to the distance covered by Roshan?



[Watch Video Solution](#)

11. Saurabh takes 15 minutes to reach school from his house and Sachin takes one hour to reach school from house. Find the ratio of the time taken by Saurabh to the time taken by Sachin



Watch Video Solution

12. Cost of a toffee is 50 paise and cost of a chocolate is Rs 10. Find the ratio of the cost of a toffee to the cost of a chocolate.





[Watch Video Solution](#)

13. In a school, there were 73 holidays in one year. What is the ratio of the number of holidays to the number of days in one year?



[Watch Video Solution](#)

14. Are the ratios 25 g:30 g and 40 g :48 kg in proportion?



[Watch Video Solution](#)

15. Are 30,40,45 and 60 in proportion?



Watch Video Solution

16. Do the ratios 15 cm to 2 m and 10 sec to 3 minute form a proportion?



Watch Video Solution

17. Check whether the given ratios are equal
i.e.they are in propoprtn.

1: 5 and 3: 15



[Watch Video Solution](#)

18. Check whether the given ratios are equal
i.e. they are in proportion.

2: 9 and 18: 81



[Watch Video Solution](#)

19. Check whether the given ratios are
equal, i.e., they are in proportion. If yes, then

write them in the proper form.

15: 45 and 5: 25



[Watch Video Solution](#)

20. Check whether the given ratios are equal
i.e.they are in propoprtion.

4: 12 and 9: 27



[Watch Video Solution](#)

21. Check whether the given ratios are equal

i.e.they are in propoprtion.

Rs.10 to Rs.15 and 4 to 6.



Watch Video Solution

22. If the cost of 6 cans of juice is Rs.210 then

what will be the cost of 4 cans of juice?



Watch Video Solution

23. A motoerbike travels 220 km in 5 litres of petrol.How much distance will it cover in 1.5 litres of petrol.



Watch Video Solution

24. If the cost of a dozen of soaps is Rs.153.80 ,what will be the cost of 15 such soaps?



Watch Video Solution

25. Cost of 105 envelopes is Rs.35.How many envelopes can be bought for Rs.10?



Watch Video Solution

26. A car travels 90 km in $2\frac{1}{2}$ hour.

How much time is required to cover 30 km with the same speed?



Watch Video Solution

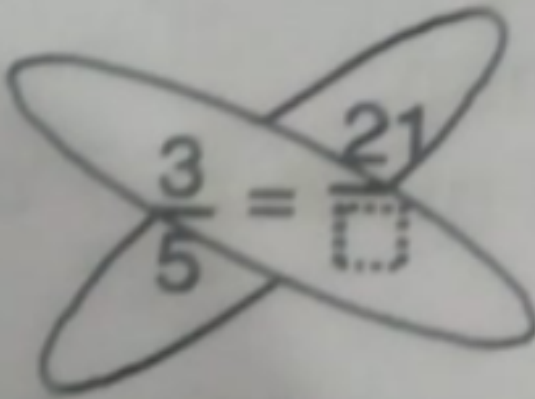
27. A car travels 90 km in $2\frac{1}{2}$ hour.

Find the distance covered in 2 hours with the same speed.



[Watch Video Solution](#)

28. Which of the following complete the given figure?



The image shows a hand-drawn diagram of an atom with four lobes. Inside the atom, the equation $\frac{3}{5} = \frac{21}{\square}$ is written. The number 21 is written above the fraction line, and a square box is drawn below the fraction line to represent the unknown denominator.

A. 35

B. 45

C. 15

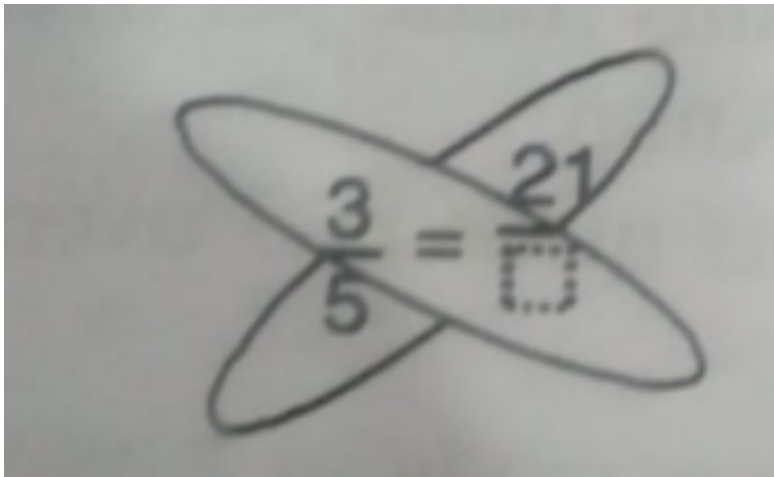
D. 61

Answer:



Watch Video Solution

29. Which of the following complete the given figure?



A. 24

B. 26

C. 18

D. 20

Answer:



Watch Video Solution

30. Fill in the following blanks:

$$\frac{14}{21} = \frac{\square}{3} = \frac{6}{\square}.$$

A. 7

B. 3

C. 2

D. 4

Answer:



Watch Video Solution

31. Fill in the following blanks:

$$\frac{15}{18} = \frac{\square}{6} = \frac{10}{\square} = \frac{\square}{30}$$

A. 5

B. 6

C. 4

D. 2

Answer:



Watch Video Solution

32. Which of the following complete the given

blank space? $\frac{5}{6} = \frac{\square}{30}$

A. 20

B. 25

C. 35

D. 45

Answer:



Watch Video Solution

33. The length of a room is 30 m and breadth is 20 m. The ratio of length to breadth is :

A. 3 : 2

B. 2 : 3

C. 5 : 4

D. 4: 5.

Answer:



Watch Video Solution

34. Sheena has 25 marbles and her friend Shabnam has 30 marbles Ratio of marble of Sheena and Shabnam is.....

A. 2: 3

B. 5: 6

C. 5:4

D. 6:5.

Answer:



Watch Video Solution

35. Find ratio of 50 m and 15 m.

A. 5:3

B. 10:3

C. 3:10

D. 3:5.

Answer:



Watch Video Solution