



BIOLOGY

BOOKS - SRS PUBLICATION

NUTRITION IN ORGANISMS

Question Bank

1. Fill in the Blank

During the photosynthesis gas is released



Watch Video Solution

2. The tiny holes on the surface of leaf are called.



[Watch Video Solution](#)

3. Fill in the Blank

.... is the outermost layer of the teeth.



[Watch Video Solution](#)

4. Choose the correct Answer

Muscular tubular structure that connects pharynx with stomata.

- A. Duodenum
- B. Buccal cavity
- C. Oesophagus
- D. Rectum

Answer: C



Watch Video Solution

5. Choose the correct Answer

Non insectivorous plant

A. Drosera

B. Nepenthes

C. Utricularia

D. Dodder

Answer: D



Watch Video Solution

6. Choose the correct Answer

The green colour pigment in the leaf

A. Chloroplast

B. stomata

C. Chlorophyll

D. All the above

Answer: C



Watch Video Solution

7. Matching

- | | | |
|----------------|-------|---------------------|
| A) Autotrophs | (2) | 1. Mushroom |
| B) Saprophytes | (1) | 2. Mango plant |
| C) Parasite | (4) | 3. Food vacuole |
| D) Holozoic | (5) | 4. Intestinal worms |
| E) Amoeba | (3) | 5. Man |
| | | 6. Egestion |



[Watch Video Solution](#)

8. Answer the following question

Distinguish between Autotrophic and Heterotrophic nutrition.



[Watch Video Solution](#)

9. Write differences between

Autotrophic nutrition - Heterotrophic
nutrition :



Watch Video Solution

10. Answer the following question

What is photosynthesis ? Write its word
equation.



Watch Video Solution

11. Answer the following question

What do you understand by photosynthesis ?



Watch Video Solution

12. Answer the following question

Describe different types of teeth and their functions.



Watch Video Solution

13. Answer the following question

How many types of teeth are there ? Write their functions.



Watch Video Solution

14. Answer the following question

What happen if leaves of a green plant are coated with green paint ?



Watch Video Solution

15. Answer the following question

What happen if leaves of a green plant are coated with green paint ?



Watch Video Solution

16. Answer the following question

What questions will you ask a doctor to know about Gastritis ?



Watch Video Solution

17. Answer the following question

Radha has doubts about gastritis. She consulted a doctor. What questions she might have asked him about Gastritis ?



Watch Video Solution

18. Answer the following question

How can you prove that the leaves other than green also carry out photosynthesis ?



Watch Video Solution

19. Answer the following question

Write about the experiment you did to prove that non-green areas of leaves also conducts photosynthesis ?



Watch Video Solution

20. Answer the following question

Draw a neat labelled diagram of human digestive system ?



Watch Video Solution

21. Answer the following question

Draw the diagram of alimentary canal of man and label the parts.



Watch Video Solution

22. Answer the following question

Draw a flow chart showing nutrition in amoeba.



Watch Video Solution

23. Answer the following question

Draw a flow chart showing nutrition in amoeba.



Watch Video Solution

24. Answer the following question

How will you appreciate the role of saprophytes in the cleaning of the earth surface ?



Watch Video Solution

25. Answer the following question

We cannot imagine our earth without saprophytes. Saprophytes play a key role in the earth's surface and save the environment.

How would you appreciate this?



Watch Video Solution

26. Answer the following question

What precautions will you take to keep your digestive system healthy ?





[Watch Video Solution](#)

27. Answer the following question

Write some healthy tips to keep our digestive system always good in condition.



[Watch Video Solution](#)

28. ONE WORD ANSWER QUESTION

What are the major causes of tooth decay ?



[Watch Video Solution](#)

29. ONE WORD ANSWER QUESTION

Name the type of teeth in our mouth.



[Watch Video Solution](#)

30. ONE WORD ANSWER QUESTION

What are the steps involved in holozoic nutrition ?



[Watch Video Solution](#)

31. ONE WORD ANSWER QUESTION

What is the food of mushrooms ?



[Watch Video Solution](#)

32. ONE WORD ANSWER QUESTION

What is the sources of energy in photosynthesis ?



[Watch Video Solution](#)

33. ONE WORD ANSWER QUESTION

Write the word equation for photosynthesis.



[Watch Video Solution](#)

34. ONE WORD ANSWER QUESTION

What are villi ?



[Watch Video Solution](#)

35. ONE WORD ANSWER QUESTION

What is the mode of nutrition in human beings ?



[Watch Video Solution](#)

36. ONE WORD ANSWER QUESTION

What is the name of special roots of plants in parasitic nutrition ?



[Watch Video Solution](#)

37. ONE WORD ANSWER QUESTION

Write example of carnivorous plants.



[Watch Video Solution](#)

38. ONE WORD ANSWER QUESTION

Write the name of the colouring pigment in green parts of the plants.



[Watch Video Solution](#)

39. ONE WORD ANSWER QUESTION

Which gas is taken and given out by plants during photosynthesis ?



[Watch Video Solution](#)

40. ONE WORD ANSWER QUESTION

Which part connects pharynx with stomata ?



[Watch Video Solution](#)

41. ONE WORD ANSWER QUESTION

What is outermost layer of teeth ?



[Watch Video Solution](#)

42. ONE WORD ANSWER QUESTION

Name the part used by amoeba for movement and capture of food.



[Watch Video Solution](#)

43. ONE WORD ANSWER QUESTION

Where do we see saprophytic nutrition ?



[Watch Video Solution](#)

44. ONE WORD ANSWER QUESTION

Name the part on the leaf that acts as nose.



[Watch Video Solution](#)

45. ONE WORD ANSWER QUESTION

What is formed in the process of photosynthesis ?



[Watch Video Solution](#)

46. ONE WORD ANSWER QUESTION

What are the essential raw materials for photosynthesis ?



[Watch Video Solution](#)

47. YES/NO QUESTION

Vajrasana improves bowel movement and relieves constipation.



[Watch Video Solution](#)

48. YES/NO QUESTION

Tooth is the hardest part of the human body



[Watch Video Solution](#)

49. YES/NO QUESTION

Amoeba is a single - celled organism found in pond water



[Watch Video Solution](#)

50. YES/NO QUESTION

Exchange of gases takes place through chloroplast



[Watch Video Solution](#)

51. YES/NO QUESTION

Chlorophyll captures the energy of the sunlight



[Watch Video Solution](#)

52. YES/NO QUESTION

Fecal matter is removed through through small intestine



[Watch Video Solution](#)

53. YES/NO QUESTION

Water transports digested food to different parts of the body



[Watch Video Solution](#)

54. YES/NO QUESTION

The process of removal of waste products and undigested from the body is called digestion



[Watch Video Solution](#)

55. YES/NO QUESTION

Sun is the ultimate source of energy for all living organisms



[Watch Video Solution](#)

56. YES/NO QUESTION

The process by which green plant make their food is called photoelectric effect



[Watch Video Solution](#)

57. SEQUENCE

Small intestine → ? → Rectum → Anus



[Watch Video Solution](#)

58. SEQUENCE

Amoeba → ? → Food vacuole



[Watch Video Solution](#)

59. SEQUENCE

Incisors → Canines → ? → Molars



[Watch Video Solution](#)

60. SEQUENCE

Mouth → Buccal cavity → Pharynx → ?



[Watch Video Solution](#)

61. SEQUENCE

Ingestion → Digestion → ? →

Assimilation → Egestion.



[Watch Video Solution](#)

62. MULTIPLE CHOICE QUESTION

Carbon Dioxide + Water → + Oxygen +

Water



[Watch Video Solution](#)

63. MULTIPLE CHOICE QUESTION

In plants exchange of gases takes place through

A. stem

B. leaves

C. roots

D. stomata

Answer: D



Watch Video Solution

64. MULTIPLE CHOICE QUESTION

This is important factor for photosynthesis in the plants

- A. Minerals
- B. Sunlight
- C. Chemicals
- D. Nitrogen gas

Answer: B



Watch Video Solution

65. MULTIPLE CHOICE QUESTION

Carbon Dioxide + Water \rightarrow + Oxygen +
Water

- A. Carbon
- B. Calcium
- C. Carbohydrates
- D. Copper

Answer: C



Watch Video Solution

66. MULTIPLE CHOICE QUESTION

Choose the materials required for the activity

"Leaves other than green colour perform photosynthesis"

- A. Green leaves
- B. Red leaves
- C. Iodine solution
- D. Both B & C

Answer: D



Watch Video Solution

67. MULTIPLE CHOICE QUESTION

Choose the precaution while doing bread mould activity.

- A. Use sanitizer
- B. Use mask and gloves
- C. Use powder
- D. All the these

Answer: B



68. MULTIPLE CHOICE QUESTION

What are the material required for the activity " You know the process of tooth decay"?

- A. marbles
- B. hydrochloric acid
- C. test tube
- D. All the these

Answer: D



Watch Video Solution

69. MULTIPLE CHOICE QUESTION

Read the following para and answer the question.

A few plants manufacture their own food but also obtain a part of their nutrition from insects. Leaves of these plants are specially modified to trap insects.

What plant species are explained through above passage ?

A. Insectivorous plants

B. Carnivorous plants

C. Mushroom

D. A or B

Answer: D



Watch Video Solution

70. MULTIPLE CHOICE QUESTION

Read the following para and answer the question.

A few plants manufacture their own food but also obtain a part of their nutrition from insects. Leaves of these plants are specially modified to trap insects.

Insectivorous plants grow in area deficient in

A. zinc

B. copper

C. nitrogen

D. hydrogen

Answer: C



Watch Video Solution

71. MULTIPLE CHOICE QUESTION

Read the following para and answer the question.

A few plants manufacture their own food but also obtain a part of their nutrition from insects. Leaves of these plants are specially modified to trap insects.

Choose the right word in the given box

In \geq *stionrarr* *Di* \geq *stionrarr*



→ Assimilation

A. Egestion

B. Absorption

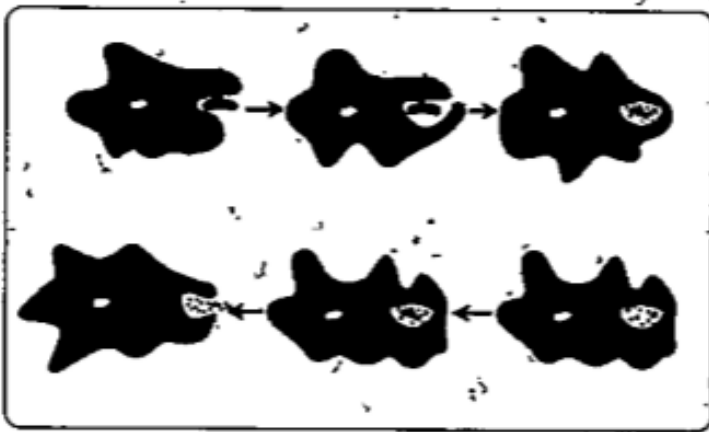
C. Evaporation

D. Conjunction

Answer: B

72. MULTIPLE CHOICE QUESTION

Look at the figure and answer the questions



What does the picture indicate ?

- A. Nutrition
- B. Locomotion

C. Rumination

D. Constipation

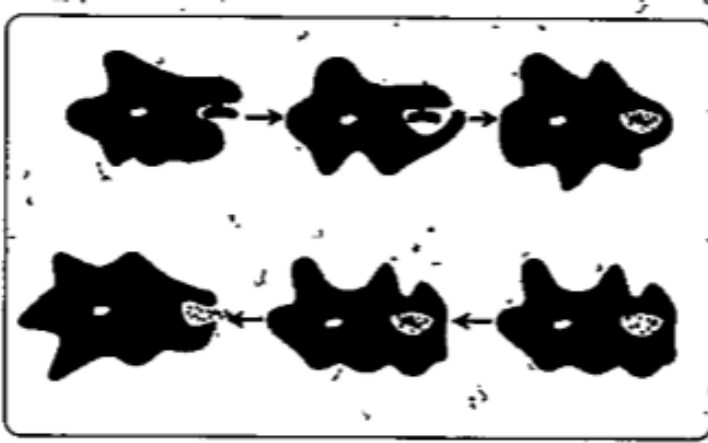
Answer: A



Watch Video Solution

73. MULTIPLE CHOICE QUESTION

Look at the figure and answer the questions



Which part helps in this process ?

- A. Chloroplast
- B. Cell membrane
- C. Pseudopodia
- D. all

Answer: C

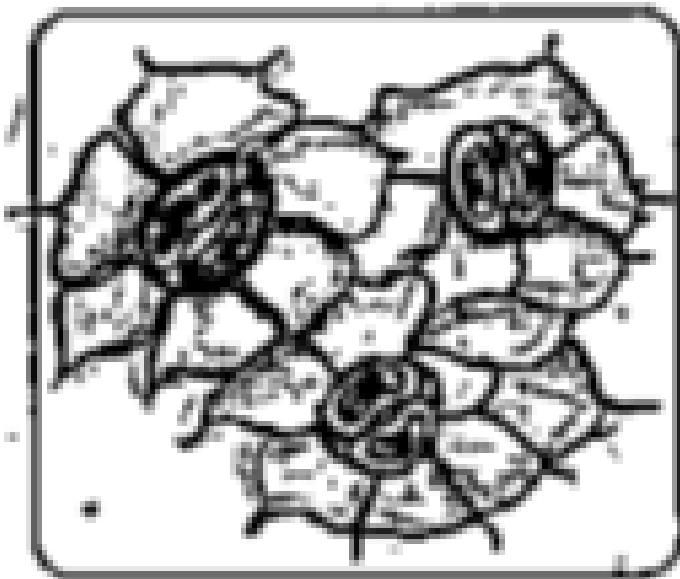




Watch Video Solution

74. MULTIPLE CHOICE QUESTION

Identify the given picture :



A. Stomata

B. Fungi

C. Chlorophyll

D. Cuscuta

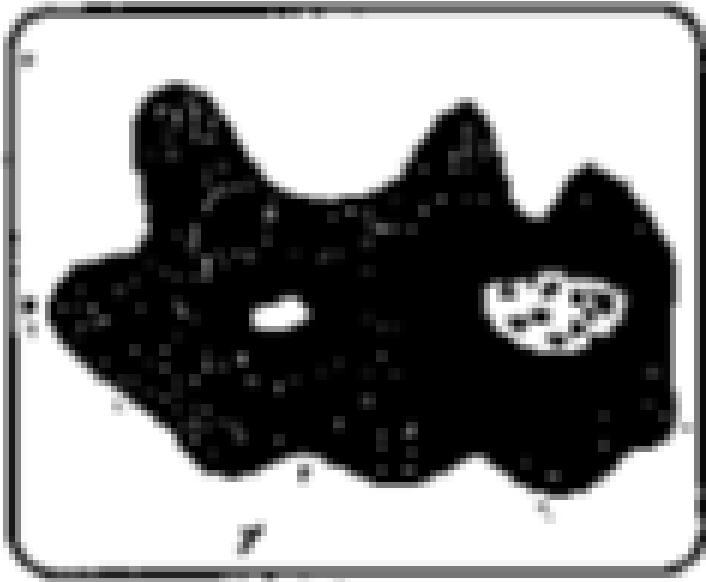
Answer: A



Watch Video Solution

75. MULTIPLE CHOICE QUESTION

Choose the name of the process in the picture.



A. Ingestion

B. Assimilation

C. Absorption

D. Egestion

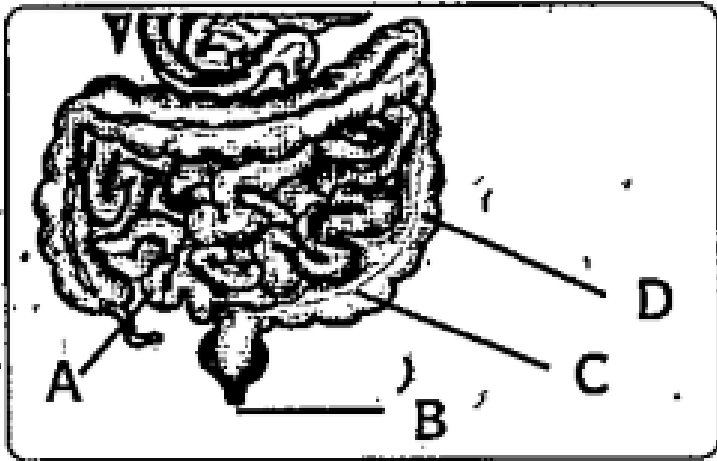
Answer: C



Watch Video Solution

76. MULTIPLE CHOICE QUESTION

Observe the diagram and answer the question.



Identify Part A

A. Large intestine

B. Small intestine

C. Rectum

D. Anus

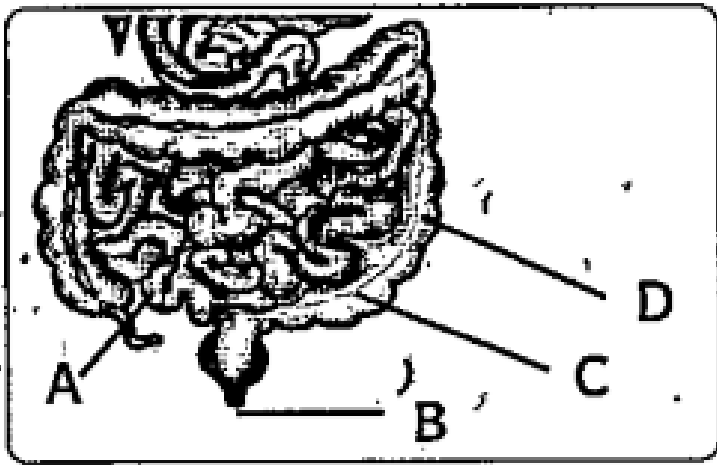
Answer: B



Watch Video Solution

77. MULTIPLE CHOICE QUESTION

Observe the diagram and answer the question.



Identify Part B

A. Rectum

B. Large intestine

C. Anus

D. Small intestine

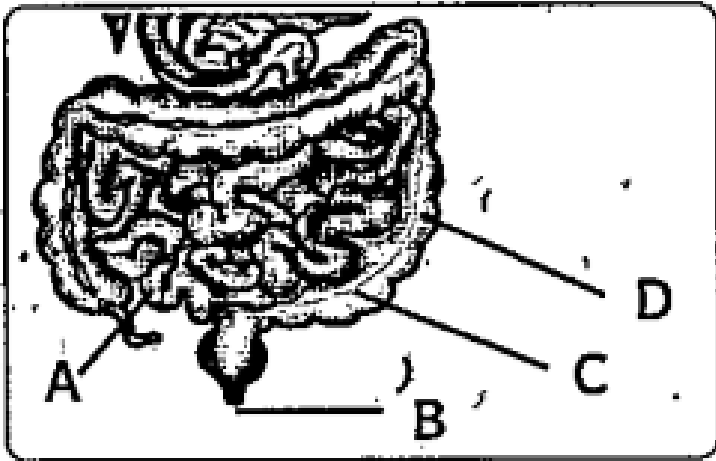
Answer: C



Watch Video Solution

78. MULTIPLE CHOICE QUESTION

Observe the diagram and answer the question.



Identify Part C

A. Rectum

B. Anus

C. Large intestine

D. Small intestine

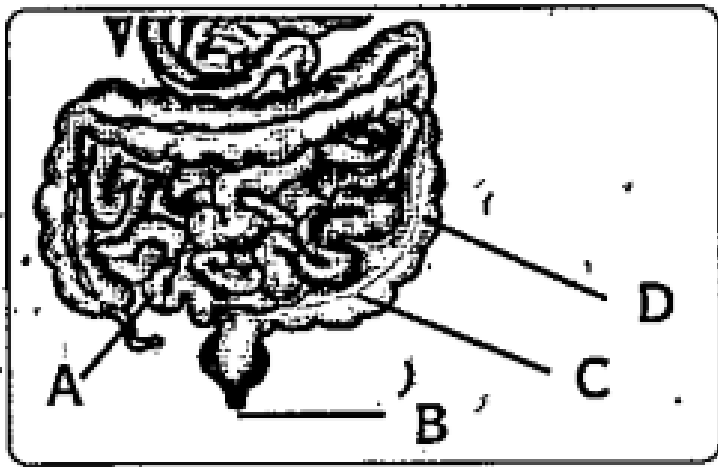
Answer: A



Watch Video Solution

79. MULTIPLE CHOICE QUESTION

Observe the diagram and answer the question.



Identify Part D

A. Small intestine

B. Rectum

C. Anus

D. Large intestine

Answer: D



Watch Video Solution

80. MULTIPLE CHOICE QUESTION

Plants consume insects to obtain

A. nitrogen

B. phosphorus

C. potassium

D. iron

Answer: A



81. MULTIPLE CHOICE QUESTION

Even in the absence of chlorophyll these plants absorb organic substances from dead and decaying matter.

- A. parasites
- B. saprophytes
- C. Carnivorous
- D. Herbivorous

Answer: B



Watch Video Solution

82. MULTIPLE CHOICE QUESTION

Plants depend on the food produced by other plants. This mode of nutrition is known as
Nutrition.

A. autotrophic

B. saprophytic

C. parasitic

D. carnivorous

Answer: C



Watch Video Solution

83. MULTIPLE CHOICE QUESTION

Amoeba is a Called organism.

A. dual

B. triple

C. single

D. quadruple

Answer: C



Watch Video Solution

84. MULTIPLE CHOICE QUESTION

The total length of alimentary canal is.....metres.

A. 7

B. 8

C. 6

D. 9

Answer: D



Watch Video Solution

85. MULTIPLE CHOICE QUESTION

..... Is the hardest part of the human body.

A. Tongue

B. Throat

C. Tooth

D. Skin

Answer: C



Watch Video Solution

86. MULTIPLE CHOICE QUESTION

..... Is the outermost layer of teeth

A. Cavity

B. Enamel

C. Skin

D. All of these

Answer: B



Watch Video Solution

87. MULTIPLE CHOICE QUESTION

..... Is the first part of the small intestine.

A. Pharynx

B. Oesophagus

C. Duodenum

D. Stomach

Answer: C



Watch Video Solution

88. MULTIPLE CHOICE QUESTION

The storage point for undigested food.

A. Anus

B. Mouth

C. Pharynx

D. Rectum

Answer: D



Watch Video Solution

89. MULTIPLE CHOICE QUESTION

.... Leads into oesophagus

A. Stomach

B. Mouth

C. Pharynx

D. Anus

Answer: C



Watch Video Solution

90. MULTIPLE CHOICE QUESTION

Digestion of food is completed in

A. Stomach

B. Pharynx

C. Anus

D. Small intestine

Answer: D



Watch Video Solution

91. MULTIPLE CHOICE QUESTION

Through Fecal matter is removed

A. Rectum

B. Anus

C. Mouth

D. Stomach

Answer: B



Watch Video Solution

92. FILL IN THE BLANK

Leaves work as Of plants.



Watch Video Solution

93. FILL IN THE BLANK

Mushrooms and animals are



[Watch Video Solution](#)

94. FILL IN THE BLANK

The process of intake and utilization of food by organisms is called



[Watch Video Solution](#)

95. FILL IN THE BLANK

Carbon Dioxide + Water \rightarrow Carbohydrate +
..... + Water



[Watch Video Solution](#)

96. FILL IN THE BLANK

..... Gas is taken by plants during
photosynthesis



[Watch Video Solution](#)

97. FILL IN THE BLANK

Glucose is a simple form of Formed in photosynthesis



[Watch Video Solution](#)

98. FILL IN THE BLANK

Mushrooms grow on Matter



[Watch Video Solution](#)

99. FILL IN THE BLANK

Haustoria are a type of



[Watch Video Solution](#)

100. FILL IN THE BLANK

Every year And Are observed as National Deworming Day.



[Watch Video Solution](#)

101. FILL IN THE BLANK

On NDD children in the age group of 1-19 years are given Tablet.



[Watch Video Solution](#)

102. FILL IN THE BLANK

The process of food taken into the body is



[Watch Video Solution](#)

103. FILL IN THE BLANK

Finger like projections in amoeba are called



Watch Video Solution

104. FILL IN THE BLANK

.... Teeth are used to grind food.



Watch Video Solution

105. FILL IN THE BLANK

The finger-like outgrowths in the inner wall of small intestine are called



[Watch Video Solution](#)

106. FILL IN THE BLANK

..... Juice from liver helps in digestion.



[Watch Video Solution](#)

107. MATCH THE FOLLOWING



View Text Solution

108. MATCH THE FOLLOWING

- | <u>Group - A</u> | | <u>Group - B</u> |
|-------------------|-----|---------------------|
| 1. Sun | () | a) Leaves |
| 2. Pigment | () | b) Stomata |
| 3. Food factories | () | c) Light |
| 4. Photo | () | d) Source of energy |
| 5. Tiny pores | () | e) Chlorophyll |



[Watch Video Solution](#)

109. What is tooth decay ?



[Watch Video Solution](#)

110. ONE WORD ANSWER QUESTION

What are the steps involved in holozoic nutrition ?



[Watch Video Solution](#)

111. Explain the given term

Oesophagus



Watch Video Solution

112. Explain the given term

Duodenum



Watch Video Solution

113. Write the differences between parasite and saprophyte.



[Watch Video Solution](#)

114. From where do the plants obtain nitrogen?



[Watch Video Solution](#)

115. Name the following:

Pores through which leaves exchange gases.



[Watch Video Solution](#)

116. Name the following:

Plants that act as scavenger of nature.



Watch Video Solution

117. Name the following:

Those plants that share food and shelter.



Watch Video Solution

118. Name the following:

Plants which cannot make their own food and obtain it from host.



Watch Video Solution

119. What is nutrition ? How many types of nutrition are there ?



Watch Video Solution

120. What are different types of heterotrophic nutrition ?



Watch Video Solution

121. What are the parts of human digestive system ?



Watch Video Solution

122. What questions do you ask a dentist regarding cavities and habits practised for healthy teeth ?



Watch Video Solution

123. In the present Corona crisis, all school are conducting online classes and children are not going to school. They are simply taking rest without any physical activity. In addition to that they are having cool drinks, burgers, oily snacks

etc. What will be the future consequences of this
?



Watch Video Solution

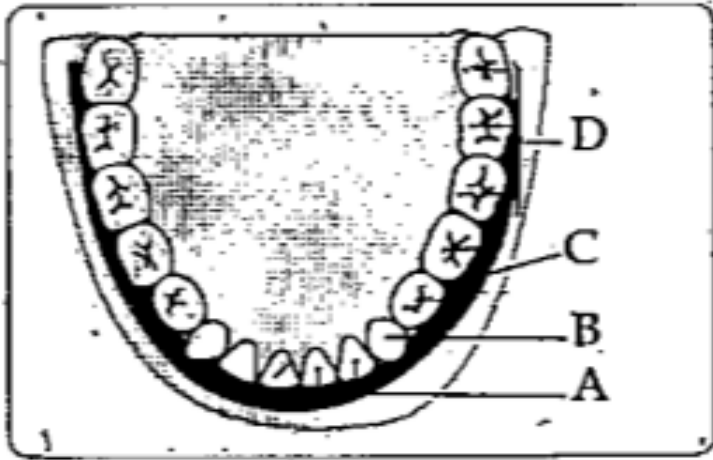
124. Write the type of nutrition for the given organisms.

Organism/Plant

- 1) Dodder plant
- 2) Cow
- 3) Mushroom

 [Watch Video Solution](#)

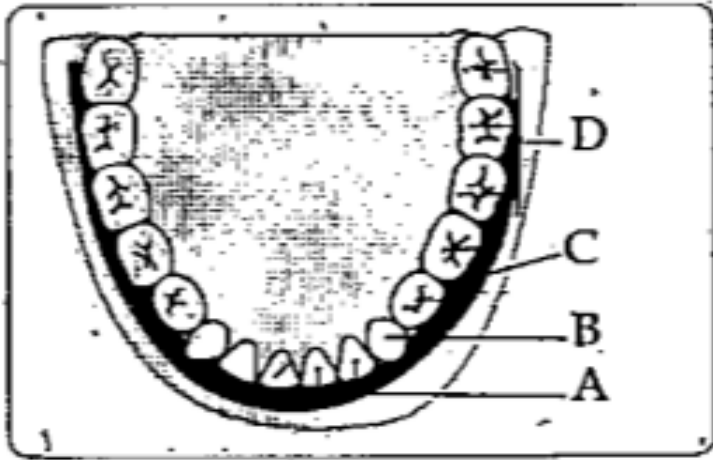
125. Observe the picture and answer the question given.



What is the name and function of set of set teeth A?

[Watch Video Solution](#)

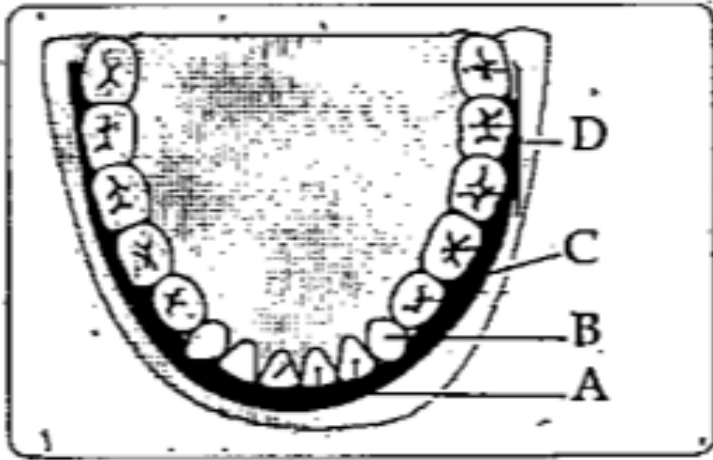
126. Observe the picture and answer the question given.



What is the name and function of set of set teeth B?

[Watch Video Solution](#)

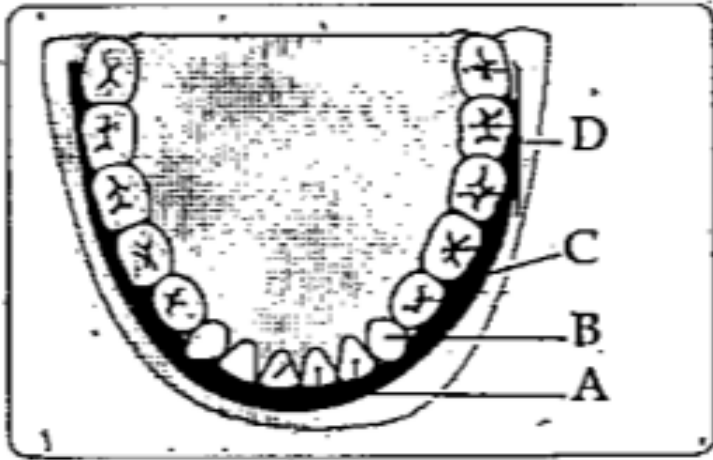
127. Observe the picture and answer the question given.



What is the name and function of set of set teeth C ?

[Watch Video Solution](#)

128. Observe the picture and answer the question given.



What is the name and function of set of set teeth D ?

[Watch Video Solution](#)

129. Is food made in all parts of a plant or only in certain parts?



[Watch Video Solution](#)

130. How do you appreciate the role of yoga in our daily life to get rid of gas and acidity ?



[Watch Video Solution](#)

131. What are the adverse effects of smoking, chewing tobacco and drinking alcohol ?



[Watch Video Solution](#)

132. What are the home remedies of acidity ?



Watch Video Solution