



# PHYSICS

## NCERT - NCERT Physics(HINGLISH)

### ELECTRIC CURRENT AND ITS EFFECTS

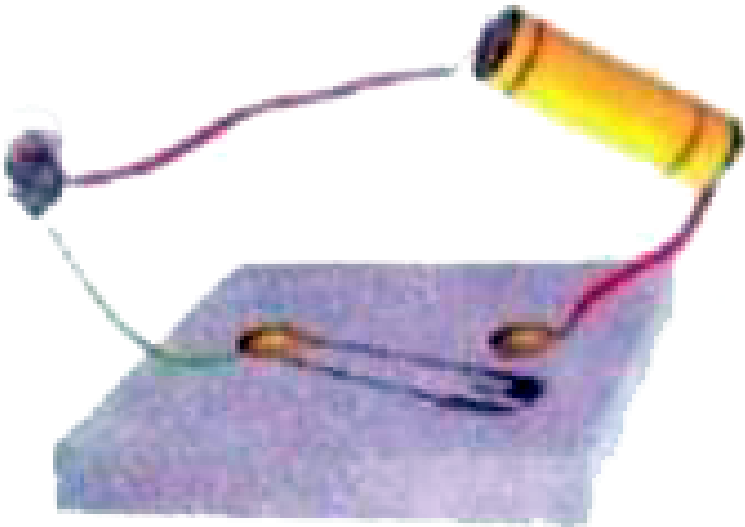
#### Exercise

1. Draw in your notebook the symbols to represent the following components of electrical circuits: connecting wires, switch in

the 'OFF' position, bulb, cell, switch in the 'ON' position, and battery.

 [Watch Video Solution](#)

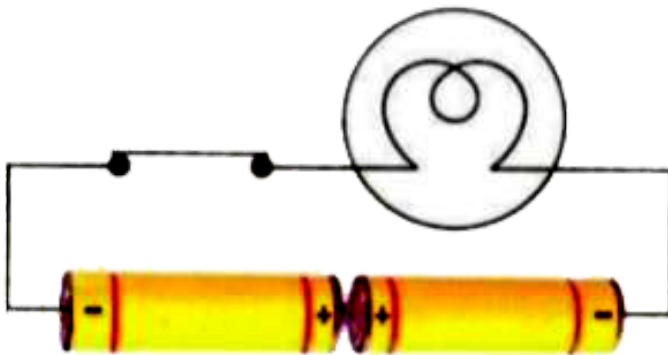
2. Draw the circuit diagram to represent the circuit shown in figure.





Watch Video Solution

3. The bulb in the circuit shown in Figure does not glow. Can you identify the problem? Make necessary changes in the circuit to make the bulb glow.



Watch Video Solution

4. Name any two effects of electric current.



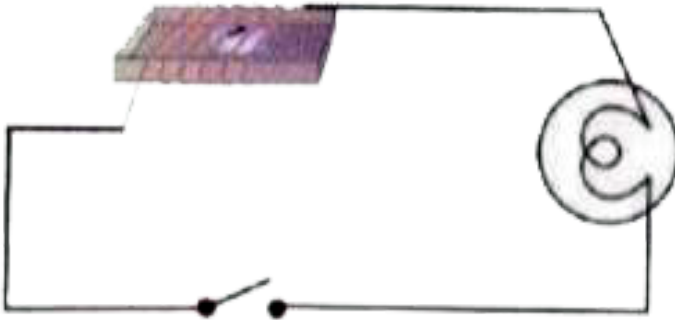
**Watch Video Solution**

5. When the current is switched on through a wire, a compass needle kept nearby gets deflected from its north-south position. Explain.



**Watch Video Solution**

6. Will the compass needle show deflection when the switch in the circuit shown by figure is closed?



 [Watch Video Solution](#)

7. Do you think an electromagnet can be used for separating plastic bags from a garbage heap? Explain.



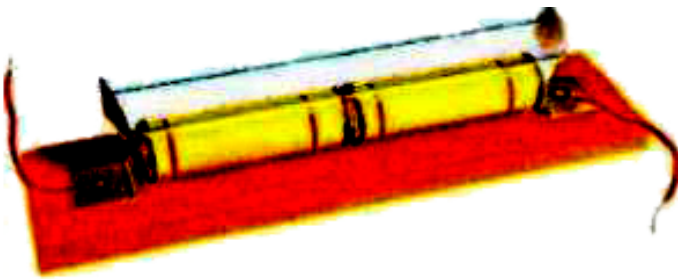
[Watch Video Solution](#)

8. An electrician is carrying out some repairs in your house. He wants to replace a fuse by a piece of wire. Would you agree? Give reasons for your response.



[Watch Video Solution](#)

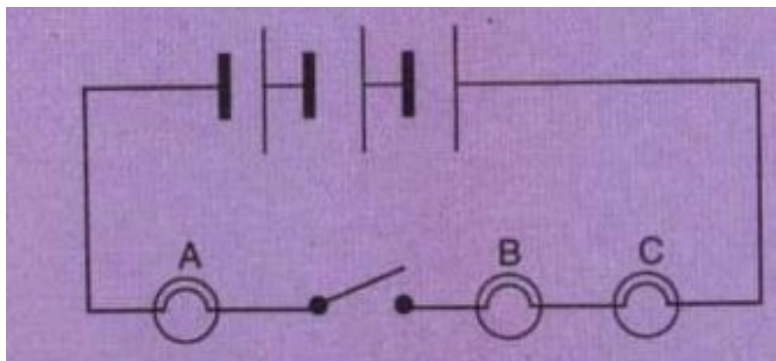
9. Zubeda made an electric circuit using a cell holder shown in Fig., a switch and a bulb. When she put the switch in the 'ON' position, the bulb did not glow. Help Zubeda in identifying the possible defects in the circuit.



**Watch Video Solution**

10. In the circuit diagram shown below :

What will be the order in which the bulbs A, B and C will glow when the switch is moved to the 'on' position ?



[Watch Video Solution](#)

**Exercise Fill In The Blanks**



1. Longer line in the symbol for cell represents its \_\_\_\_\_ terminal.

A. Negative

B. Positive

C. Both (a) and (b)

D. None of the above

**Answer: B**



**Watch Video Solution**

2. The combination of two or more cells is called a \_\_\_\_\_.



**Watch Video Solution**

3. When current is switched 'on' in a room heater, it \_\_\_\_\_.



**Watch Video Solution**

4. Fill in the following blanks with suitable words :

The safety device based on the heating effect of electric current is called \_\_\_\_\_.



[Watch Video Solution](#)

## Exercise True T And False F

1. To make a battery of two cells, the negative terminal of one cell is connected to the

negative terminal of the other cell. (T/F)



**Watch Video Solution**

2. When the electric current through the fuse exceeds a certain limit, the fuse wire melts and breaks. (T/F)



**Watch Video Solution**

3. An electromagnet does not attract a piece of iron. (T/F)



[Watch Video Solution](#)

4. State whether the following statements are true or false :

An electric bell has an electromagnet.



[Watch Video Solution](#)