



BIOLOGY

BOOKS - BETOPPERS

ORGANISATION IN THE LIVING THINGS

Formative Worksheet

1. The cells are made of

A. organelles

B. molecules

C. atoms

D. All

Answer:



Watch Video Solution

2. The molecule of life is

A. Water

B. Oxygen

C. RNA

D. DNA

Answer:



Watch Video Solution

3. Which of the following is true for molecular level of organisation?

A. Atoms → Molecules → Cells →

Compounds → Organelles

B. Cells → Organelles → Compounds

→ Molecules → Atoms

C. Atoms → Molecules → Compounds

→ Organelles → Cells

D. Molecules → Atoms → Compounds

→ Organelles → Cells

Answer:



Watch Video Solution

4. The the smallest living unit, and is capable of performing all the functions of life is

A. Cell

B. Tissue

C. Organ

D. Organ system

Answer:



Watch Video Solution

5. Statement I: In unicellular organisms like Amoeba, Paramecium and bacteria, all the functions are carried out by the single cell.

Statement - II: In multicellular organisms, each cell has the ability to perform all the activities.

A. Statement - I is true, Statement - II is false.

B. Statement - I is false, Statement - II is true.

C. Both statements are true.

D. Both statements are false.

Answer:



Watch Video Solution

6. In a tissue, cells.

A. have same shape

B. perform similar function

C. Both

D. None

Answer:



Watch Video Solution

7. Which of the plant tissues is involved in protection?

A. Epidermal tissue

B. vascular tissue

C. ground tissue

D. all

Answer:



8. The function of vascular bundles is

- A. protection
- B. storage
- C. supply of water
- D. supply of food

Answer:



Watch Video Solution

9. The protective animal tissue is

- A. Epithelial tissue
- B. Connective tissue
- C. nervous tissue
- D. All

Answer:



Watch Video Solution

10. Largest organ of our body is

A. Stomach

B. Lungs

C. Heart

D. Skin

Answer:



Watch Video Solution

11. The internal organs of our body are

(I) Heart (II) Ear (III) Lungs (IV) Nose (V)
Liver(VI) Legs

A. I, II, III

B. II,III,IV

C. I,III,V

D. II, IV,VI

Answer:



Watch Video Solution

12. Which of the following is an organ system in plants

- A. Root system
- B. shoot system
- C. Digestive system
- D. nervous system

Answer:



Watch Video Solution

13. Which of the following is more complex?

A. Population

B. Biotic community

C. Ecosystem

D. Biosphere

Answer:



Watch Video Solution

14. The next higher level of organisation above the individual level is

A. Population

B. Biotic community

C. Ecosystem

D. Biosphere

Answer:



Watch Video Solution

15. Statement - I: Individuals of populations of one species can breed among themselves only

Statement-II: They do not breed with individuals of other species

A. Statement - I is true, Statement - II is

false.

B. Statement - I is false, Statement - II is

true.

C. Both statements are true.

D. Both statements are false.

Answer:



Watch Video Solution

16. The next higher level of organisation above the population level is

- A. Population
- B. Biotic community
- C. Ecosystem
- D. Biosphere

Answer:



Watch Video Solution

17. The biotic community in an area interacts with the non-living physical environment, and the two (i.e., the biotic community and the abiotic environment) together constitute the next higher level of organisation. This is termed as

A. Population

B. Biotic community

C. Ecosystem

D. Biosphere

Answer:



Watch Video Solution

18. Match the following

Column-1

- (1) Biotic
- (2) Abiotic

Column-2

- (p) soil
- (q) plants
- (r) water
- (s) animals

A. 1-p,r, 2-q,s

B. 1-p, q, 2-r,s

C. 1-q,s, 2-p,r

D. 1-p,s, 2-q,r

Answer:



Watch Video Solution

19. Which of the following is the component of biosphere?

A. Hydrosphere

B. Lithosphere

C. Atmosphere

D. All

Answer:



Watch Video Solution

20. Which of the following components of a pond ecosystem is biotic in nature?

A. Detritus

B. Oxygen

C. Algae

D. Water

Answer:



Watch Video Solution

21. Which of the following factors are biotic components of the ecosystem?

A. soils

B. fungi

C. rocks

D. Minerals

Answer:



Watch Video Solution

22. _____ and _____ are the abiotic factors of the ecosystem. The information in which row completes the given statement?

A. i- Sunlight ii- Consumers

B. i- wind ii- Decomposers

C. i- Water ii-Soil

D. i- Producers ii scavengers

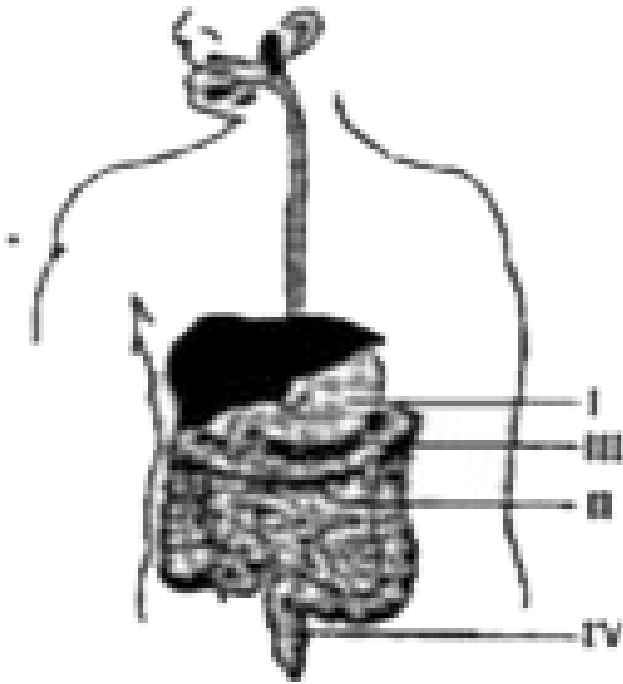
Answer:



Watch Video Solution

23. The given diagram illustrates the human digestive system. Which part represents

stomach?



A. I

B. II

C. III

D. IV

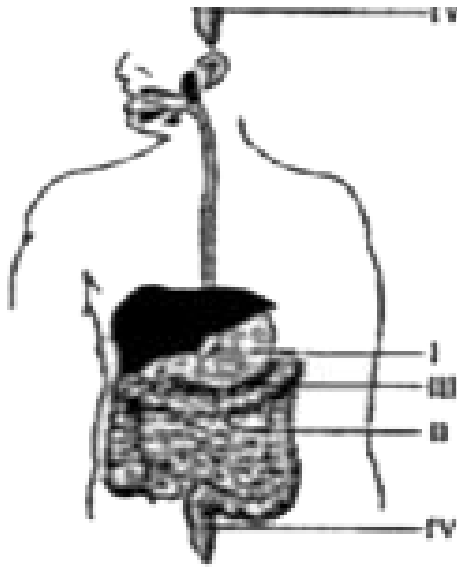
Answer:



Watch Video Solution

24. The given diagram illustrates the human digestive system. Which part represents small

intestine ?



A. I

B. II

C. III

D. IV

Answer:



Watch Video Solution

25. Oesophagus is the part of

- A. Digestive system
- B. Reproductive system
- C. Excretory system
- D. Nervous system

Answer:



[Watch Video Solution](#)

26. The topmost part of the digestive system is

- A. Mouth
- B. small intestine
- C. Oesophagus
- D. Anus

Answer:



[Watch Video Solution](#)

27. The food pipe is

A. Stomach

B. small intestine

C. Oesophagus

D. Anus

Answer:



Watch Video Solution

28. Which of the following statements about cellular respiration in organism is true?

A. Oxygen is released during cellular respiration.

B. Cellular respiration leads to the formation of starch.

C. Cellular respiration leads to the formation of glucose.

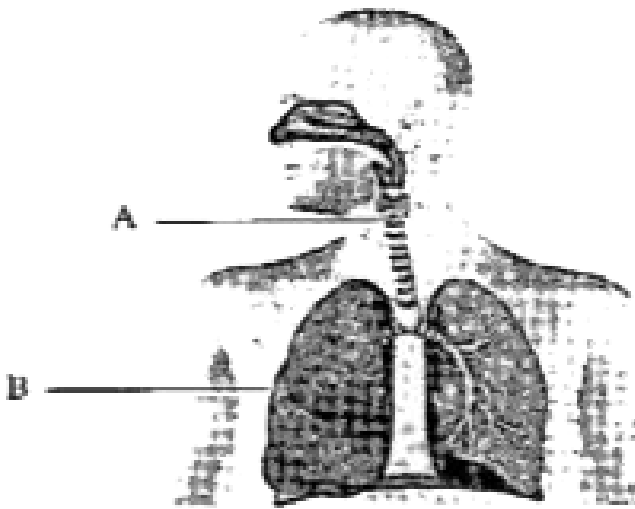
D. Carbon dioxide is released during cellular respiration.

Answer:



Watch Video Solution

29. The given diagram illustrates the human respiratory system. Identify A and B.



A. A-Lungs, B- Trachea

B. A-Trachea, B- Lungs

C. A-Trachea, B- Bronchi

D. A-Bronchi, B- Trachea

Answer:



[Watch Video Solution](#)

30. Circulatory system includes

A. Heart

B. Blood

C. Blood vessels

D. All

Answer:



[Watch Video Solution](#)

31. Brain is the part of

- A. Digestive system
- B. Circulatory system
- C. Excretory system
- D. Nervous system

Answer:



Watch Video Solution

32. Nervous system includes

I. Brain II. Spinal cord III. Heart IV. Ear V. Liver VI.

Pancreas

A. I,III ,V

B. II,IV,VI

C. I,II,IV

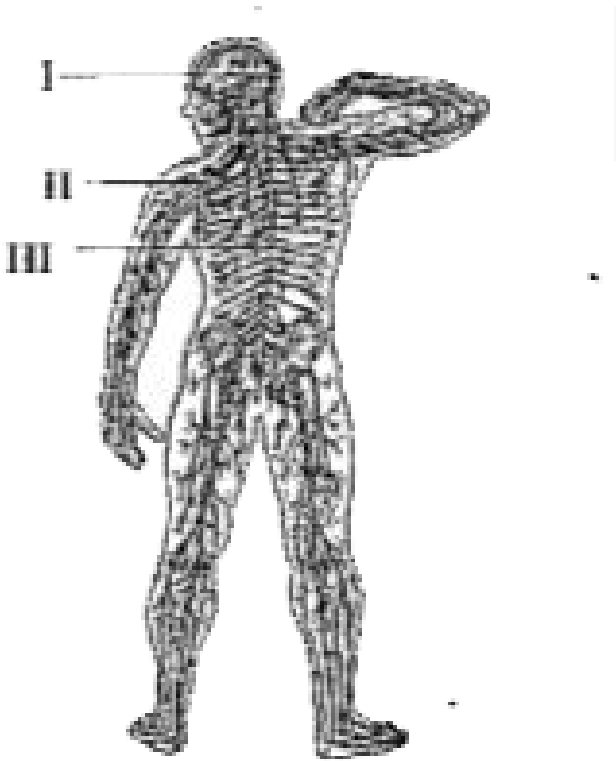
D. I, III,IV

Answer:



Watch Video Solution

33. The given diagram illustrates the human nervous system. Identify spinal cord in the diagram.



A. I

B. II

C. III

D. IV

Answer:

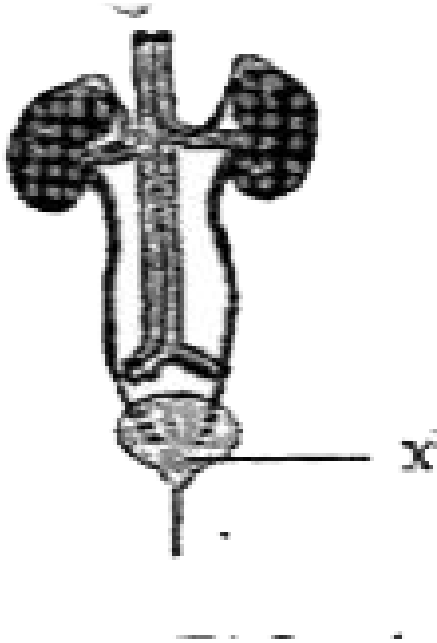


Watch Video Solution

34. The given illustration represents the human excretory system.

In the given illustration, the structure labelled

X represents



A. kidney

B. ureter

C. urinary bladder

D. urethra

Answer:



Watch Video Solution

35. What is the primary excretory product of humans?

A. Ammonia

B. Urea

C. Glucose

D. Starch

Answer:



Watch Video Solution

36. Kidneys perform following functions except

- A. Removal of body toxins
- B. Supplying oxygen to body
- C. Maintaining body salt balance
- D. Filtering of wastes from the blood

Answer:



Watch Video Solution

37. This process of producing young ones of its own kind is called

- A. Digestion
- B. Reproduction
- C. Excretion
- D. Circulation

Answer:



38. The male reproductive cells are

A. eggs

B. ova

C. sperms

D. All

Answer:



39. The female reproductive organ is

A. testis

B. Ovary

C. Both

D. None

Answer:



Watch Video Solution

40. The skeletal system provides shape and rigidity to the body. It also helps in protecting a number of internal organs. Which of the following internal organs is not protected by the ribcage?

A. Heart

B. Liver

C. Lungs

D. Stomach

Answer:



Watch Video Solution

41. Which of the following statements about constituents of rib cage is correct?

A. Rib cage consists of chest bones only.

B. Rib cage protects stomach, lungs, and heart.

C. Vertebral column alone comprises rib cage.

D. Twelve ribs and backbone constitute rib cage.

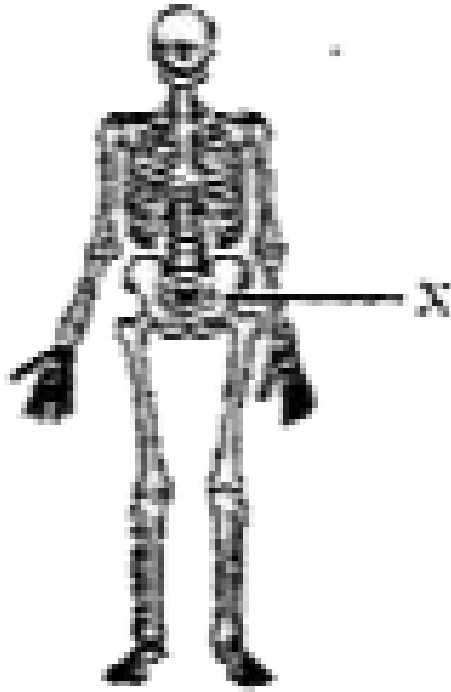
Answer:



Watch Video Solution

42. The given figure represents the human skeletal system. In the given figure, label X

represents the



A. skull

B. rib cage

C. shoulder bones

D. pelvic bones

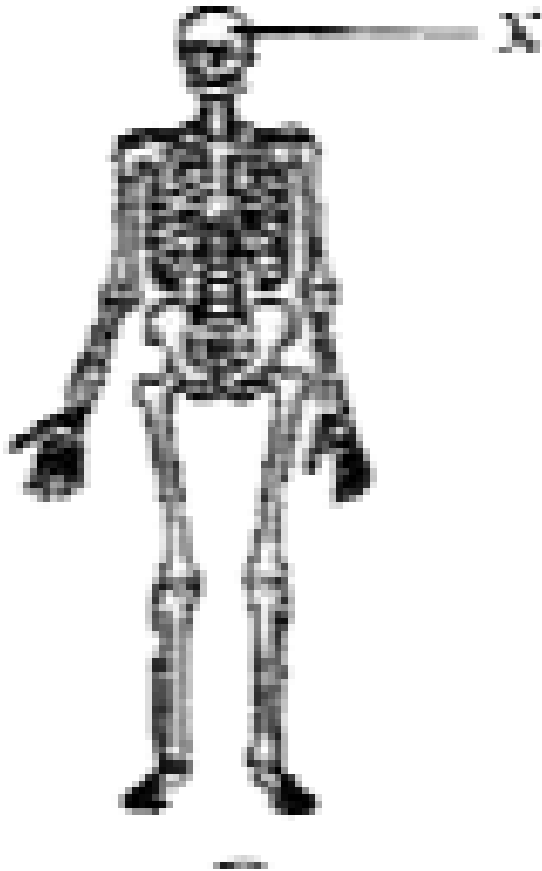
Answer:



Watch Video Solution

43. The given figure represents the human skeletal system. In the given figure, label X

represents the



A. skull

B. rib cage

C. shoulder bones

D. pelvic bones

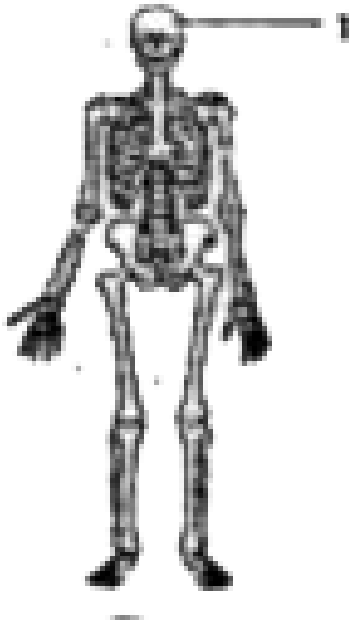
Answer:



Watch Video Solution

44. The given diagram illustrates the human skeleton. The structure labelled I in the given

diagram illustrates the



A. ribs

B. skull

C. backbone

D. pelvic bones

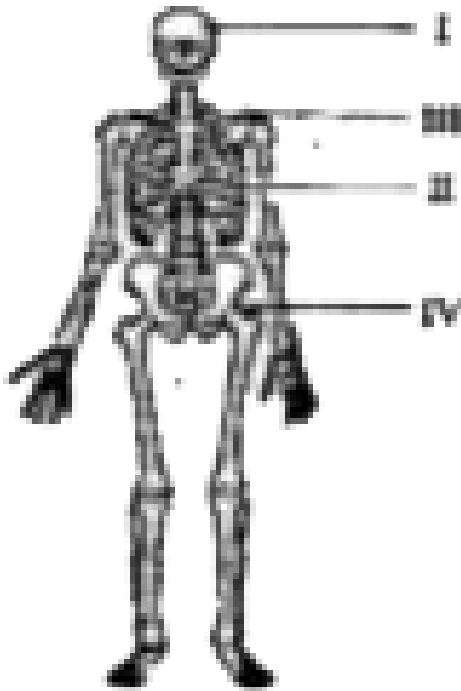
Answer:



Watch Video Solution

45. The given diagram illustrates the human skeleton. Pelvic bones in the given diagram are

labelled as



A. I

B. II

C. III

D. IV

Answer:



Watch Video Solution

46. Match the following columns

	Column A		Column B
i	Brain	a	Rib cage
ii	Heart	b	Skull
iii	Spinal cord	c	Backbone

A. i-a, ii-b, iii-c

B. i-b, ii-a, iii-c

C. i-b, ii-c, iii-a

D. i-c, ii-a, iii-b

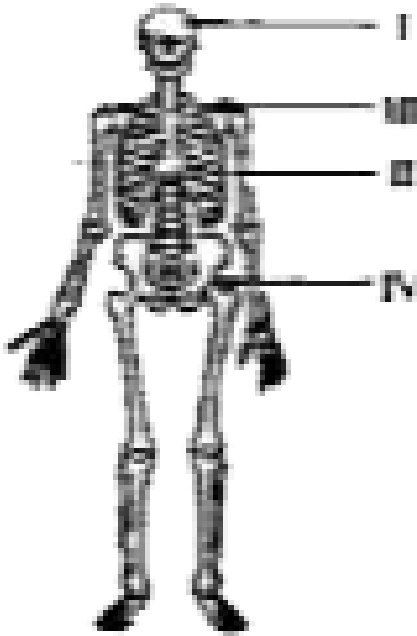
Answer:



Watch Video Solution

47. The given diagram illustrates the human skeleton. Which labelled structure helps in

protecting the brain?



A. I

B. II

C. III

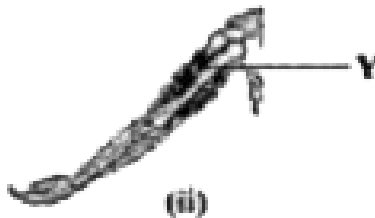
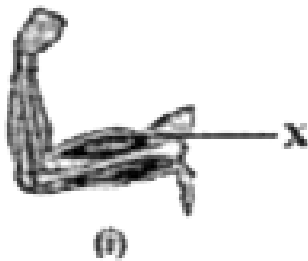
D. IV

Answer:



Watch Video Solution

48. The given figure illustrates two arm muscles X and Y at two positions i and ii. During transition from i to ii,



A. only the relaxation of muscle Y takes place

B. only the contraction of muscle X takes place

C. relaxation of both muscles X and Y takes place

D. contraction of both muscles X and Y takes place

Answer:



Watch Video Solution

Conceptive Worksheet

1. All organisms are made of

A. cells

B. tissues

C. organs

D. organ system

Answer:





2. The important compound, responsible for the transfer of characters from parents to children

A. Carbohydrates

B. Proteins

C. Fats

D. DNA

Answer:



[Watch Video Solution](#)

3. The lowest level of a cellular organisation is

A. Cell

B. Tissue

C. organ

D. Organ system

Answer:



[Watch Video Solution](#)

4. The cell teams are called

A. atoms

B. molecules

C. tissues

D. organs

Answer:



Watch Video Solution

5. The function of cortex is

A. protection

B. storage

C. supply of water

D. supply of food

Answer:



Watch Video Solution

6. Tissues combine to form

A. organs

B. cells

C. organ system

D. None

Answer:



Watch Video Solution

7. Which of the following represents the organs of human body?

A. Stomach

B. Lungs

C. Heart

D. All

Answer:



Watch Video Solution

8. The external organs of our body are

(I) Heart (II) Ear (III) Lungs (IV) Nose (V) Liver
(VI) Legs

A. I, II, III

B. II, III, IV

C. I, III, V

D. II,IV,VI

Answer:



Watch Video Solution

9. Digestive system represents

A. a cell

B. a tissue

C. an organ

D. an organ system

Answer:



Watch Video Solution

10. All the individuals of a single species existing in a given locality or area constitute a

A. Population

B. Biotic community

C. Ecosystem

D. Biosphere

Answer:



Watch Video Solution

11. The populations of different species occurring in a locality constitute the next higher level of organisation called the

A. Population

B. Biotic community

C. Ecosystem

D. Biosphere

Answer:



Watch Video Solution

12. Community has populations of species.

A. same

B. different

C. both

D. none

Answer:



Watch Video Solution

13. Which of the following is an example for an ecosystem?

A. Forest

B. Desert

C. Ponds

D. All

Answer:



Watch Video Solution

14. The highest level of organisation in the living world is

A. Population

B. Biotic community

C. Ecosystem

D. Biosphere

Answer:



Watch Video Solution

15. Consumers are organisms that are dependent on other organisms for food.

Which of the following organisms is not a consumer?

A. Cow

B. Lion

C. Plants

D. Rabbit

Answer:



Watch Video Solution

16. The following food chain exists in an enclosed forest region.

Plants → Rabbit → Fox

Which of these is a consequence of the excessive hunting of rabbit population by humans?

- A. The plant population remains unaffected
- B. The food chain remains unaffected
- C. The fox population decreases

D. The fox population increases

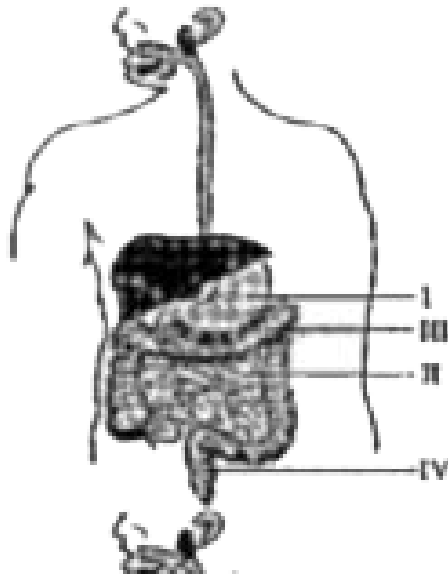
Answer:



Watch Video Solution

17. The given diagram illustrates the human digestive system. Which part represents large

intestine?



A. I

B. II

C. III

D. IV

Answer:



Watch Video Solution

18. The lowest part of digestive system is

- A. Stomach
- B. small intestine
- C. Oesophagus
- D. Anus

Answer:



Watch Video Solution

19. In general, the blood vessel that carry impure blood is

A. artery

B. vein

C. both

D. none

Answer:



20. Which of the following organ system transports gases and materials throughout the body?

- A. Digestive system
- B. Circulatory system
- C. Excretory system
- D. Nervous system

Answer:



Watch Video Solution

21. Spinal cord is the part of

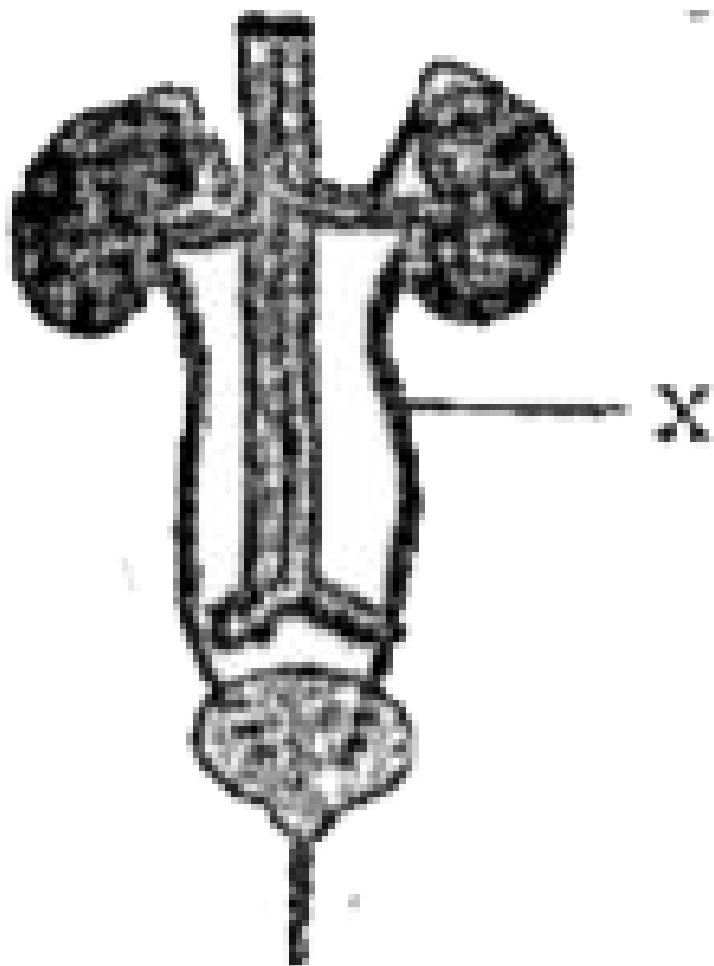
- A. Digestive system
- B. Circulatory system
- C. Excretory system
- D. Nervous system

Answer:



Watch Video Solution

22. The given illustration represents the human excretory system



In the given illustration, the structure labelled

X represents

A. Kidney

B. ureter

C. bladder

D. urethra

Answer:



Watch Video Solution

23. In human excretory system, the structure that helps in the storage of urine is

A. Kidney

B. ureter

C. bladder

D. urethra

Answer:



Watch Video Solution

24. The kidneys are important because they

A. remove body waste

B. digest food material

C. pump blood to all body parts

D. control different body movements

Answer:



Watch Video Solution

25. The female reproductive cells are

A. eggs

B. ova

C. sperms

D. all

Answer:



Watch Video Solution

26. The male reproductive organ is

A. testis

B. ovary

C. Both

D. None

Answer:



Watch Video Solution

27. What is the long , hard structure that starts from the neck to the lower back of the body known as ?

A. Backbone

B. Cartilage

C. Pelvic bone

D. Shoulder bone

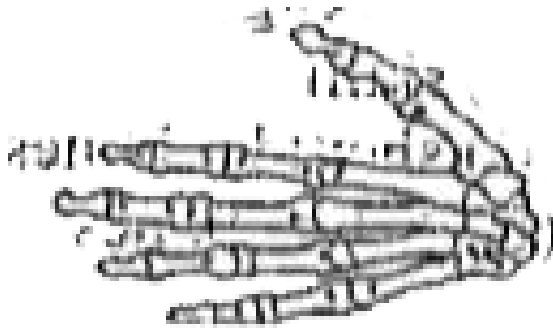
Answer:



Watch Video Solution

28. The given diagram illustrates a part of the human skeletal system. Which of the following functions is performed by the illustrated

image ?



A. Breathing

B. Holding

C. Running

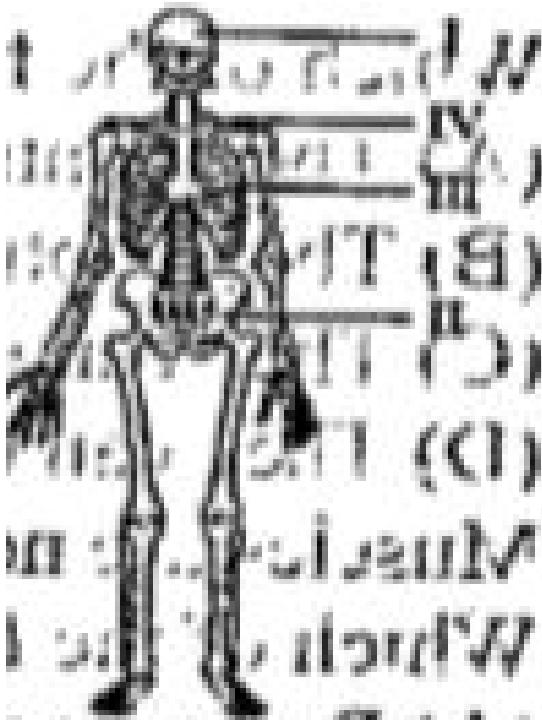
D. Sitting

Answer:



Watch Video Solution

29. The given diagram represents the human skeletal system. In the given figure, the shoulder bones are labelled as



A. I

B. II

C. III

D. IV

Answer:



Watch Video Solution

30. The given figure represents a part of the human skeletal system. The given figure

represents the



A. bones of the hand

B. bones of the feet

C. rib cage

D. back bone

Answer:



Watch Video Solution

31. The rib cage is a part of the skeletal system.

It performs the function of protecting the

- A. heart and the lungs
- B. heart and the stomach
- C. heart and the stomach
- D. kidney and the stomach

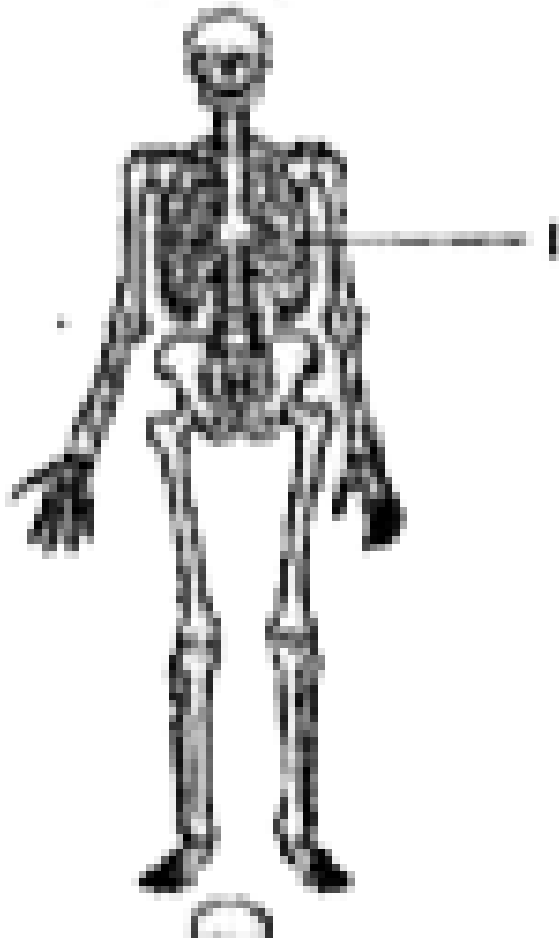
Answer:



Watch Video Solution

32. The given figure represents the human skeletal system. In the given figure, label I

represents the



A. rib cage

B. skull

C. shoulder bones

D. pelvic bones

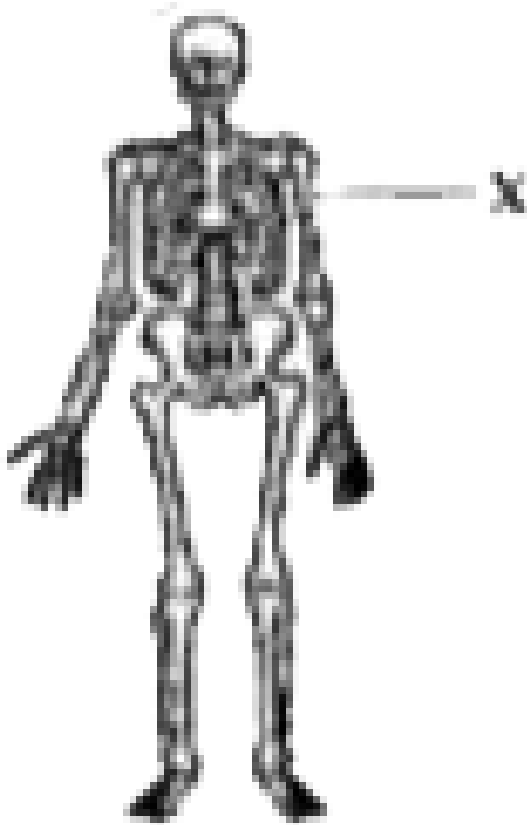
Answer:



Watch Video Solution

33. The given figure represents the human skeletal system. In the given figure, label X

represents the



A. rib cage

B. skull

C. shoulder bones

D. pelvic bones

Answer:



Watch Video Solution

34. Which of the following statements about muscles is incorrect?

A. They contract to move a bone in a particular direction.

B. They contract to bring a bone to its original position.

C. They can only push the bone.

D. They can only pull the bone.

Answer:



Watch Video Solution

35. Muscles are necessary for the movement of bones.

Which of the following statements is correct regarding contraction of muscles?

A. Bones can move in the absence of muscles.

B. Muscles become longer and thinner on contraction.

C. Muscles become shorter and thicker on contraction.

D. Bones can move in the presence of only one muscle.

Answer:



Watch Video Solution

36. Humans perform a variety of activities, like running, walking, playing, lifting weights etc. They are able to do so because of organ system X. The organ system X referred to in the preamble is the

A. muscular system

B. digestive system

C. excretory system

D. circulatory system

Answer:



Watch Video Solution

**Summative
Questions**

Worksheet

Multiple

Choice

1. The lowest level of cellular organisation is a

A. cell

B. organism

C. tissue

D. organelle

Answer:



Watch Video Solution

2. A group of similar cells which perform a particular function is called a

A. Organism

B. Tissue

C. Organelle

D. Organs

Answer:



Watch Video Solution

3. Two organ systems in plants are

A. Roots and stem

B. Root system and shoot system

C. Stem and branches

D. All the above

Answer:



Watch Video Solution

4. A level of organisation above the population is

A. Organism

B. Ecosystem

C. Community

D. Biosphere

Answer:



Watch Video Solution

5. Biosphere consists of

A. Atmosphere, lithosphere and hydrosphere.

B. Atmosphere and hydrosphere

C. Ecosystem only

D. Abiotic and biotic components

Answer:



Watch Video Solution

6. Biotic community consists of

A. Only animals

B. All organisms

C. Only plants

D. Organisms and the environment

Answer:



Watch Video Solution

7. Trachea is a part of

- A. Digestive system
- B. Excretory system
- C. Respiratory system
- D. Circulatory system

Answer:



Watch Video Solution

8. Bones and cartilages are a part of

- A. Skeletal system
- B. Respiratory system
- C. Muscular system
- D. Excretory system

Answer:



[Watch Video Solution](#)

Summative Worksheet li Fill In The Blanks

1. The higher levels of organisation in a multicellular organism are,,.....
And



[Watch Video Solution](#)

2. A group of cells that are similar in size and shape, and do the same job is called a



Watch Video Solution

3. Different tissues that work together form



Watch Video Solution

4. An organ used to get rid of the wastes in our body is



Watch Video Solution

5. In plants, the organ that makes food is the.....



Watch Video Solution

6. Individuals of the same kind of organisms form a



[Watch Video Solution](#)

Summative Worksheet Iii Differentiate Between The Following

1. Differentiate between the Organism and Population



[Watch Video Solution](#)

**2. Differentiate between the
Population and Community**



Watch Video Solution

**3. Differentiate between the
Ecosystem and Biosphere**



Watch Video Solution

4. Differentiate between the Tissues and Organs



[Watch Video Solution](#)

**Summative Worksheet Iv Classify The Following
As Ceils Tissues Organs Organ Systems Or
Organisms**

1. Classify as ceils, tissues, organs, organ
systems or organisms:

Chlamydomonas



[Watch Video Solution](#)

2. Classify as cells, tissues, organs, organ systems or organisms:

Leaf



[Watch Video Solution](#)

3. Classify as cells, tissues, organs, organ systems or organisms:

Stomach





[Watch Video Solution](#)

4. Classify as cells, tissues, organs, organ systems or organisms:

Stem



[Watch Video Solution](#)

5. Classify as cells, tissues, organs, organ systems or organisms:

Shoot system



[Watch Video Solution](#)

6. Classify as cells, tissues, organs, organ systems or organisms:

Skin



[Watch Video Solution](#)

7. Classify as cells, tissues, organs, organ systems or organisms:

Amoeba



[Watch Video Solution](#)

8. Classify as cells, tissues, organs, organ systems or organisms:

Blood



Watch Video Solution

9. Classify as cells, tissues, organs, organ systems or organisms:

Flower



Watch Video Solution

10. Classify as cells, tissues, organs, organ systems or organisms:

Bone



[Watch Video Solution](#)

Summative Worksheet V Name The Main Organs Of The Following Systems

1. Name the main organs of the system

Digestive system



Watch Video Solution

2. Name the main organs of the system

Respiratory system



Watch Video Solution

3. Name the main organs of the system

Circulatory system



Watch Video Solution

4. Name the main organs of the system

Nervous system



[Watch Video Solution](#)

5. Name the main organs of the system

Excretory system



[Watch Video Solution](#)

6. Name the main organs of the system

Skeletal system



[Watch Video Solution](#)

Summative Worksheet Vii Answer The Following Questions

1. What is meant by
higher levels of organisation



[Watch Video Solution](#)

2. What is meant by

lower levels of organisation?



Watch Video Solution

3. Arrange the following in an increasing order of their organisation. Also, complete the missing links in the hierarchy.

Cell, Organ, Community, Population, Biosphere



Watch Video Solution

4. Mention the different levels of organisation in a multicellular organism.



Watch Video Solution

5. Explain the relationship between cells, tissues and organs.



Watch Video Solution

6. Give the functions of system

Digestive system



Watch Video Solution

7. Give the functions of system

Respiratory system



Watch Video Solution

8. Give the functions of system

Circulatory system



Watch Video Solution

9. Give the functions of system

Nervous system



Watch Video Solution

10. Give the functions of system

Excretory system



Watch Video Solution

11. Give the functions of system

Skeletal system



Watch Video Solution

Summative Worksheet Viii The Organs Of Various Systems Are Listed In The First Column Of The

Chart Put A Tick In Any Of The Other Columns If The Organ Belongs To Any Of The Systems

1. The organs of various systems are listed in the first column of the chart. Put a tick in any of the other columns if the organ belongs to any of the systems.

ORGANS	SYSTEM						
	Digestive	Respiratory	Excretory	Reproductive	Circulatory	Nervous	Skeletal
1. Vertebrae.							
2. Large intestine							
3. Bladder							
4. Brain							
5. Nose							
6. Pancreas							
7. Liver							
8. Kidneys							
9. Spinal cord							
10. Lungs							
11. Heart							
12. Ureter							
13. Mouth							
14. Nerves							
15. Wind pipe							
16. Food pipe							
17. Bone							
18. Cartilage							



Watch Video Solution

