



BIOLOGY

BOOKS - BETOPPERS

TISSUES

Formative Worksheet

1. Which type of epithelial tissue is found in the cells lining blood vessels?

A. Squamous epithelium

B. Cuboidal epithelium

C. Columnar epithelium

D. Ciliated epithelium

Answer:

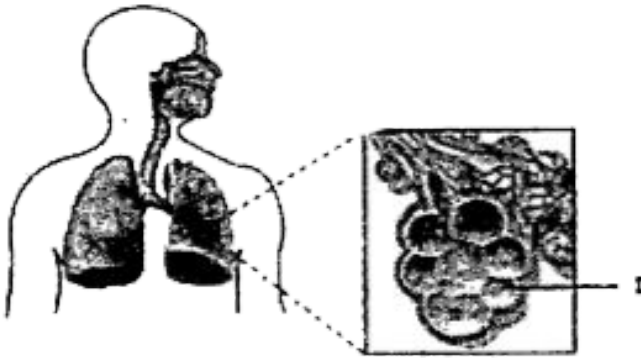


Watch Video Solution

2. The given illustration represents the human respiratory system.

In the given illustration, the structure labelled

I is lined with which type of epithelial tissue?



- A. Columnar epithelium
- B. Stratified squamous
- C. Cuboidal epithelium
- D. Simple squamous

Answer:

 [Watch Video Solution](#)

3. Skin is a protective body covering. Which epithelium is present in skin?

- A. Stratified squamous epithelium
- B. Simple squamous epithelium
- C. Columnar epithelium
- D. Cuboidal epithelium

Answer:



Watch Video Solution

4. The goblet cells are specialised cells found in the intestine, which secrete mucus. Mucus acts as a lubricant. Which of the following epithelial cells is modified as goblet cells?

A. Cuboidal epithelium

B. Columnar epithelium

C. Simple squamous epithelium

D. Stratified squamous epithelium

Answer:



Watch Video Solution

5. Ciliated columnar epithelium, which is made of cilia, is found in the lining of the

A. respiratory tract

B. kidney tubules

C. oesophagus

D. mouth

Answer:



Watch Video Solution

6. ___i___ epithelium is present in the internal lining of kidney tubules. ___ii___ present in the lining of the small intestine. The information in which alternative completes the given statements?

A. i-columnar ii-it is also

B. i-cuboidal ii-it is also

C. i-cuboidal ii- columnar epithelium is

D. i-columnar ii-cuboidal epithelium is

Answer:



Watch Video Solution

7. The linings of __i__ and __ii__ are made of simple squamous epithelial cells. The information in which alternative completes the given statement?

A. i-oesophagus ii-blood vessels

B. i-kidney ii-blood vessels

C. i-kidney tubules ii-intestines

D. i-oesophagus ii-intestines

Answer:



Watch Video Solution

8. The matrix of i is composed of compounds of phosphorus and calcium. The matrix of ii is composed of proteins and sugars. The information in which alternative completes the given statements?

A. i-cartilage ii-bone is

B. i-bone ii-bone is also

C. i-cartilage ii-cartilage is also

D. i-bone ii-cartilage is

Answer:



Watch Video Solution

9. Blood is a type of connective tissue. Which of the following statements about the functions of blood is correct?

A. It helps in transporting gases and nutrients

B. It helps in connecting bones to muscles

C. It helps in the digestion of food

D. It helps in the storage of fats

Answer:



Watch Video Solution

10. In human respiratory system, the air enters the nostrils and is transported to the lungs through trachea. particular connective tissue lines the trachea and prevents it from collapsing. Which connective tissue supports the trachea?

A. Adipose

B. Ligament

C. Tendon

D. Cartilage

Answer:



Watch Video Solution

11. The given figure illustrates a type of connective tissue. In the given figure, the structure labelled 'X' is composed of which types of cells?



A. Adipocytes

B. Osteocytes

C. Monocytes

D. Lymphocytes

Answer:



Watch Video Solution

12. Polar bears live at the North Pole. They have a number of adaptations to enable them to live in the harsh conditions. For example,

they have a thick layer of blubber (fat) up to 11 cm, which helps them in keeping warm while swimming in cold water. Which type of tissues helps the polar bear in the given situation?

- A. Areolar tissue
- B. Adipose tissue
- C. Cartilage tissue
- D. Skeletal tissue

Answer:



Watch Video Solution

13. __i__ muscle fibre helps in the contraction and relaxation of blood vessels. It is spindle in shape and in __ii__ action.

The information in which alternative completes the given statements?

- A. i-smooth ii-voluntary
- B. i-skeletal ii-voluntary
- C. i-smooth ii-involuntary
- D. i-skeletal ii-involuntary

Answer:



Watch Video Solution

14. Smooth muscle cells are found in __i__ and __ii__.

The information in which alternative completes the given statement?

A. i-bronchi ii-hands

B. i-bronchi ii-iris

C. i-heart ii-iris

D. i-heart ii-hands

Answer:



Watch Video Solution

15. The given illustration represents a type of muscle. The type of muscle shown in the given illustration is likely to be found in the



A. muscles of arms

B. muscles of legs

C. stomach

D. heart

Answer:



Watch Video Solution

16. The oesophagus helps in the passage of food from the mouth to the stomach. The muscle cells present in the oesophagus are

i and ii. The information in which alternative completes the given statement?

A. i-multinucleate ii-spindle shaped

B. i-uninucleate ii-cylindrical

C. i-multinucleate ii-cylindrical

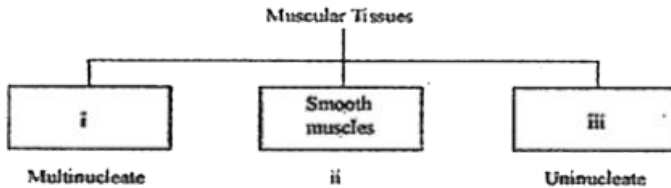
D. i-uninucleate ii-spindle shaped

Answer:



Watch Video Solution

17. The given figure illustrates the types of muscle tissues.



The information in which alternative correctly completes the given flowchart?

A. i-Cardiac muscle ii-Multinucleate iii-

Striated muscle

B. i-Striated muscle ii-Uninucleate iii-

Cardiac muscle

C. i-Cardiac muscle ii-Enucleate iii-Striated
muscle

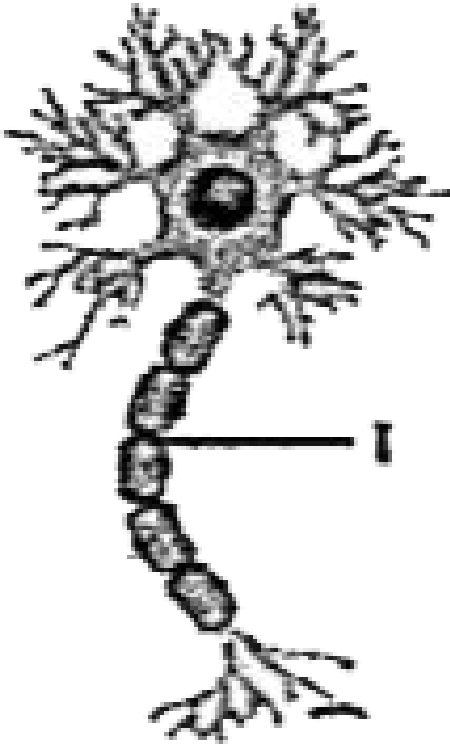
D. i-Striated muscle ii-Enucleate iii-Cardiac
muscle

Answer:



Watch Video Solution

18. The given illustration represents a neuron.



In the given illustration, the structure labeled I
is the

A. nerve ending

B. cell body

C. dendrite

D. axon

Answer:



Watch Video Solution

19. Which connective tissue helps in storing fats?

A. Tendon

B. Ligament

C. Adipose tissue

D. Areolar tissue

Answer:



Watch Video Solution

20. Bones and muscles are connected to each other with the help of a connective tissue. Which connective tissue joins muscles to bones?

A. Tendon

B. Ligament

C. Areolar tissue

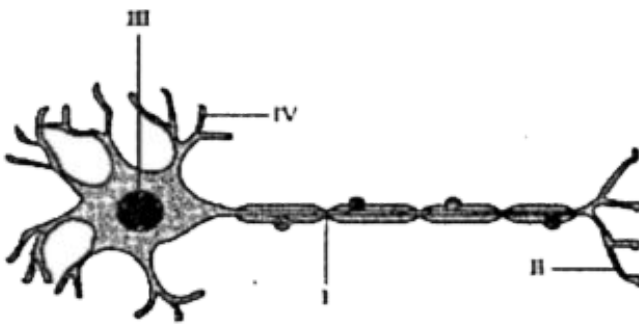
D. Adipose tissue

Answer:



Watch Video Solution

21. The given figure illustrates the structure of nerve cell.



All the activities of the cell are controlled by the part labelled as

- A. I
- B. II
- C. III
- D. IV

Answer:



Watch Video Solution

22. __i__ meristem is responsible for the increase in the length of the stem and roots.

__ii__ responsible for the increase in the girth of the stem and roots. The information in which alternative completes the given statements?

A. i-lateral/ ii-apical meristem is

B. i-apical ii-lateral meristem is

C. i-apical ii-apical meristem is also

D. i- lateral ii-lateral-meristem is also

Answer:



Watch Video Solution

23. Which of the following organelles is absent in the cells of the meristematic tissue?

A. Nucleus

B. Vacuoles

C. Ribosomes

D. Mitochondria

Answer:



Watch Video Solution

24. In plants, meristematic tissue is of three types. The i helps in increasing the length of the plant while the intercalary meristem helps in the ii growth of plants and the iii meristem helps in increasing the thickness of plants.

The information in which alternative completes the given statement?

- A. i-lateral meristem ii-longitudinal iii-apical
- B. i-apical meristem ii-intercalary iii-lateral
- C. i-lateral meristem ii-equatorial iii-apical
- D. i-apical meristem ii-apical iii-lateral

Answer:



Watch Video Solution

25. Which type of permanent tissue helps in storing food in plants?

A. Parenchyma

B. Collenchyma

C. Xylem

D. Phloem

Answer:



Watch Video Solution

26. Simple permanent tissue is made of only one type of cells. Which type of permanent plant tissue provides buoyancy to aquatic plants?

A. Chlorenchyma

B. Sclerenchyma

C. Aerenchyma

D. Collenchyma

Answer:



Watch Video Solution

27. Permanent plant tissues are of two types: simple and complex. Which type of simple permanent tissue provides flexibility to plants?

- A. Parenchyma
- B. Aerenchyma
- C. Collenchyma
- D. Sclerenchyma

Answer:



Watch Video Solution

28. Stomata are present on the epidermis of the leaf. What is the primary function of stomata?

A. Storage

B. Photosynthesis

C. Providing flexibility

D. Carrying out gaseous exchange

Answer:



Watch Video Solution

29. The epidermis of some desert plants is covered with a thick, waxy coating of a chemical called __i__. __ii__ The chemical present in the walls of cork cells. It makes them impervious to water. The information in which alternative completes the given statements?

A. i-cutin ii-suberin is

B. i-suberin ii-cutin is

C. i-cutin ii-cutin is also

D. i-suberin ii- suberin is also

Answer:



Watch Video Solution

30. Some fruits such as plum and apricot have a hard covering over their seeds. Almond fruit has a hard covering over its seeds because of the presence of

A. parenchyma

B. aerenchyma

C. collenchyma

D. sclerenchyma

Answer:



Watch Video Solution

31. The alternatives in the given table can be correctly matched as

	Column A		Column B
i	Cellulose	a	Epidermis
ii	Suberin	b	Sclerenchyma
iii	Lignin	c	Parenchyma
iv	Chitin	d	Cork

A. $i \rightarrow d, ii \rightarrow c, iii \rightarrow a, iv \rightarrow b$

B. $i \rightarrow c, ii \rightarrow d, iii \rightarrow b, iv \rightarrow a$

C. $i \rightarrow b, ii \rightarrow a, iii \rightarrow c, iv \rightarrow d$

D. $i \rightarrow c, ii \rightarrow b, iii \rightarrow a, iv \rightarrow d$

Answer:



Watch Video Solution

32. The given list presents some of the simple permanent tissues found in plants.

I. Parenchyma II. Collenchyma III. Sclerenchyma
IV. Epidermis V. Cork

Which of the following pairs of tissues are made up of dead cells?

A. I and III

B. II and IV

C. III and V

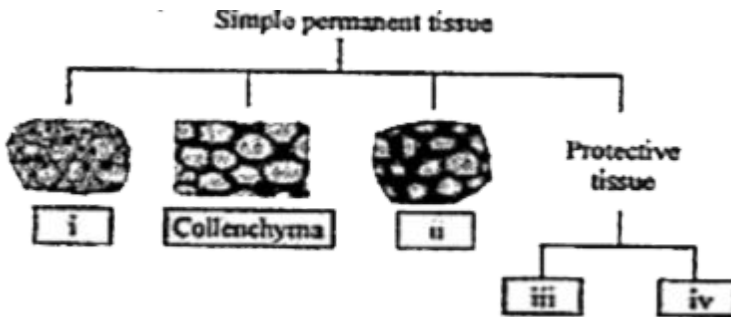
D. I and V

Answer:



Watch Video Solution

33. The given figure illustrates the types of plant tissues.



The information in which alternative correctly completes the given figure?

A. i-Sclerenchyma ii-Cork iii-Epidermis iv-
Parenchyma

B. i-Parenchyma ii-Sclerenchyma iii-
Epidermis iv-Cork

C. i-Sclerenchyma ii-Cork iii-Parenchyma iv-
Epidermis

D. i-Parenchyma ii-Epidermis iii-
Sclerenchyma iv-Cork

Answer:



Watch Video Solution

34. i conducts water and minerals from the roots to different parts of the plant. This movement of water and minerals is ii. The information in which alternative completes the given statements?

- A. i-xylem ii-unidirectional
- B. i-xylem ii-bidirectional
- C. i-pholem ii-undirectional
- D. i-pholem ii-bidirectional

Answer:



Watch Video Solution

Conceptive Worksheet

1. The primary function of the cells of the nervous tissue is to

A. protect the internal organs

B. transmit stimulus

C. transport oxygen

D. aid in movement

Answer:



Watch Video Solution

2. The cells of the tissue that transmit stimulus are known as. The information in which alternative completes the given statement?

A. i-nervous ii-muscle

B. i-muscular ii-muscles

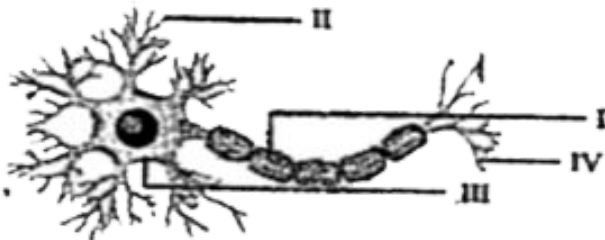
C. i-nervous ii-neurons

D. i-muscular ii-neurons

Answer:

 **Watch Video Solution**

3. The given illustration represents a neuron.



In the given illustration, the cell body of the neuron is labelled as

A. I

B. II

C. III

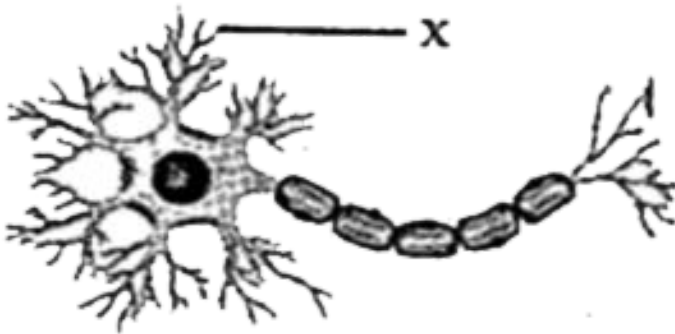
D. IV

Answer:



Watch Video Solution

4. The given illustration represents a neuron.



In the given illustration, the structure labelled

X is the

A. axon

B. dendrite

C. cell body

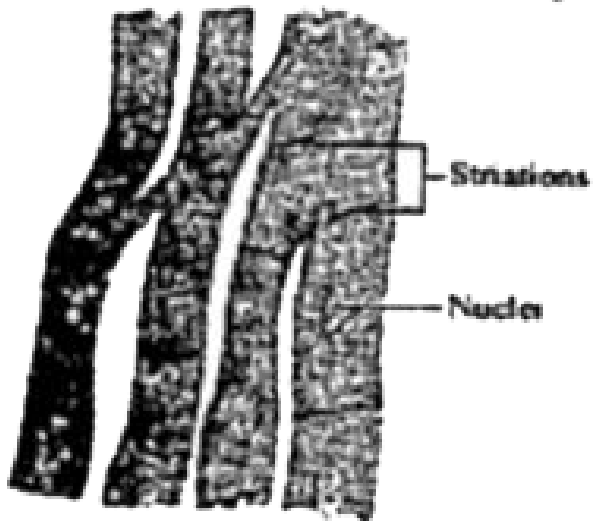
D. nerve ending

Answer:



Watch Video Solution

5. The given illustration represents a type of muscle fibre.



The illustrated muscle fibre is present in the

- A. heart
- B. ureters
- C. iris of the eyes
- D. bronchi of the lungs

Answer:



Watch Video Solution

6. Involuntary muscles control the movement of food in the alimentary canal. The cells of involuntary muscles are

- A. cylindrical and uninucleate
- B. cylindrical and multinucleate
- C. spindle-shaped and uninucleate
- D. spindle-shaped and multinucleate

Answer:



Watch Video Solution

7. The cells of voluntary muscles are long, cylindrical, __i__ and __ii__. The information in which alternative completes the given statement?

- A. i-branched ii-uninucleate
- B. i-branched ii-multinucleate
- C. i-unbranched ii-uninucleate

D. i-unbranched ii-multinucleate

Answer:



Watch Video Solution

8. Which of the following statements about bone is incorrect?

A. It stores fats

B. It is non-flexible and strong

C. It contains calcium and phosphorus compounds

D. It anchors muscles and protects the delicate organs of the body

Answer:



Watch Video Solution

9. Which of the following statements about blood is incorrect?

- A. It transports gases to various parts of the body
- B. It forms the framework of the body
- C. It has a fluid matrix
- D. It contains proteins

Answer:



Watch Video Solution

10. The tissue found between the skin and muscles is called __i__ tissue. Fats are stored in the __ii__ tissue. The information in which alternative completes the given statements?

- A. i-areolar ii-cartilage
- B. i-areolar ii-adipose
- C. i-ligament ii-cartilage
- D. i-ligament ii-adipose

Answer:



Watch Video Solution

11. Cartilage has a solid matrix that is composed of i and ii .

The information in which alternative completes the given statement?

- A. i-calcium ii-phosphorus
- B. i-proteins ii-calcium
- C. i-sugars ii-phosphorus
- D. i-proteins ii-sugars

Answer:



Watch Video Solution

12. Which connective tissue transports gases, nutrients, and wastes to different body parts?

A. Bone

B. Blood

C. Ligament

D. Cartilage

Answer:



Watch Video Solution

13. Ligaments that connect two __i__ are a type of __ii__ tissue.

The information in which alternative completes the given statement?

A. i-bones ii-muscular

B. i-muscles ii-muscular

C. i-bones ii-connective

D. i-muscles ii-connective

Answer:



Watch Video Solution

14. What is the primary function of cuboidal epithelium?

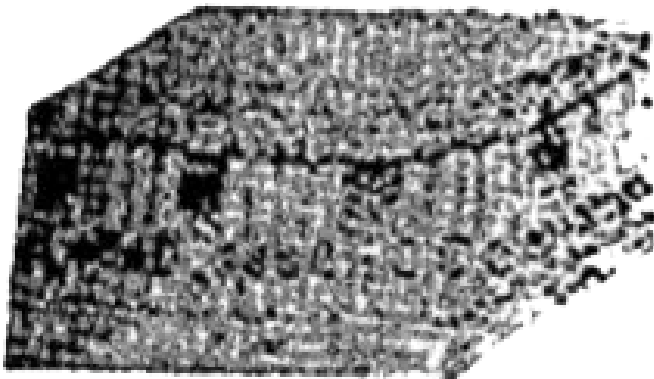
- A. To prevent wear and tear
- B. To provide useful secretions
- C. To prevent microbial infection

D. To provide mechanical support

Answer:

 [Watch Video Solution](#)

15. The given figure represents a cell present in the inner lining of the gut.



Which epithelial tissue is represented in the given figure?

- A. Stratified squamous epithelium
- B. Simple squamous epithelium
- C. Columnar epithelium
- D. Cuboidal epithelium

Answer:



Watch Video Solution

16. Which illustration represents stratified squamous epithelium?



Answer:



Watch Video Solution

17. Which epithelial tissue forms the lining of the mouth?

- A. Stratified squamous
- B. Simple squamous
- C. Columnar
- D. Cuboidal

Answer:



Watch Video Solution

18. The linings of __i__ and the ducts of salivary glands are formed by __ii__ epithelium, which provides mechanical support to these structures. The information in which alternative completes the given statement?

A. i-kidney tubules ii-tubules

B. i-lung alveoli ii-columnar

C. i-kidney tubules ii-cuboidal

D. i-lung alveoli ii-cuboidal

Answer:



Watch Video Solution

19. Which type of epithelium is present in the inner lining of the intestine?

- A. Stratified squamous
- B. Simple squamous
- C. Columnar
- D. Cuboidal

Answer:



Watch Video Solution

20. Simple squamous epithelial cells are extremely __i__ and __ii__.

The information in which alternative completes the given statement?

A. i-thick ii-columnar

B. i-thick ii-flat

C. i-thin ii-columnar

D. i-thin ii-flat

Answer:



Watch Video Solution

21. The xylem is a complex permanent tissue, which is made of four different components. The tracheids and vessels are made up of dead cells and help in the vertical transportation of water and minerals.

Which type of cells makes up the tracheids and vessels?

A. Aerenchyma

B. Collenchyma

C. Chlorenchyma

D. Scler enchyma

Answer:



Watch Video Solution

22. In an experiment to study parasitism in rice plants, it was found that a species of fungi was able to penetrate the stem of rice plant. The fungi produced chemicals which degraded

A. cellulose

B. cuticle

C. suberin

D. lignin

Answer:



Watch Video Solution

23. Which tissue constitutes the husk of a coconut?

A. Aerenchyma

B. Collenchyma

C. Sclerenchyma

D. Chlorenchyma

Answer:



Watch Video Solution

24. Collenchyma consists of __i__ cells that have __ii__ intercellular spaces between them.

The information in which alternative completes the given statement?

A. i-dead ii-no

B. i-dead ii-small

C. i living ii-no

D. i-living ii-small

Answer:



Watch Video Solution

25. __i__ is a type of complex permanent tissue that helps in the bi-directional transportation of __ii__ in plants. The information in which alternative completes the given statement?

- A. i-pholem ii-food
- B. i-pholem ii-water
- C. i-xylem ii-food
- D. i-xylem ii-water

Answer:



Watch Video Solution

26. In plants, water and minerals are primarily transported through

- A. tracheids and vessels
- B. tracheids and sieve-tubes
- C. vessels and companion cells
- D. sieve tubes and companion cells

Answer:



Watch Video Solution

27. Phloem is a type of complex permanent tissue that helps in the translocation of food.

Which component of phloem consists of dead cells?

- A. Sieve tube
- B. Phloem fibre
- C. Companion cell

D. Phloem parenchyma

Answer:



Watch Video Solution

28. Sieve tubes and companion cells are components of

A. xylem

B. phloem

C. collenchyma

D. parenchyma

Answer:



Watch Video Solution

29. In xylem, __i__ helps in the sideways conduction of water and __ii__ play a supportive role. The information in which alternative completes the given statement?

A. i-vessel ii-tracheids

B. i-tracheids ii-parenchyma

C. i-parenchyma ii-fibres

D. i-fibres ii-vessels

Answer:



Watch Video Solution

30. The structural components that conduct water and nutrients vertically in xylem are __i__ and __ii__ . The information in which alternative completes the given statement?

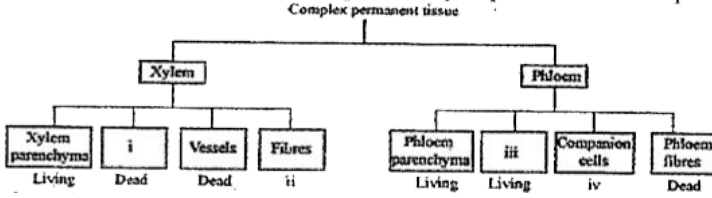
- A. i-companion cells ii-tracheids
- B. i-companion cells ii-sieve tubes
- C. i-vessles ii-sieve tubes
- D. i-vessels ii-tracheids

Answer:



Watch Video Solution

31. The given figure represents the different types of complex permanent tissue in plants.



The information in which alternative correctly completes the given flowchart?

- A. i- Tracheids ii- Living iii-Sieve tube iv-Dead
- B. i-Sieve tube ii-Dead iii-Tracheids iv-Dead
- C. i-Tracheids ii-Dead iii-Sieve tube iv-Living
- D. i-Sieve tube ii-Living iii-Tracheids iv-Living

Answer:


Watch Video Solution

32. The flow of food material in phloem is __i__ and the cells of __ii__ aid in this transport. The information in which alternative completes the given statement?

- A. i-bidirectional ii-sieve tubes
- B. i-unidirectional ii-phloem fibres
- C. i-bidirectional ii-phloem fibres
- D. i-unidirectional ii-sieve tubes

Answer:



Watch Video Solution

Summative Worksheet I

1. Which of the following is a protective tissue?

- A. Muscular tissue
- B. Connective tissue
- C. Epithelial tissue
- D. Nervous tissue

Answer:



Watch Video Solution

2. The tissue which forms the internal lining of organs is

- A. Nervous tissue
- B. Epithelial tissue
- C. Connective tissue
- D. A muscle

Answer:



3. Nervous tissue consists of

A. Nerve cells

B. Tendons

C. Cyton

D. Lymph

Answer:



4. Short branching structures arising from the cell body of a neuron are called

A. Axons

B. Cyton

C. Dendrites

D. Lymph

Answer:



Watch Video Solution

5. The muscles which take part in breathing movements are

- A. Involuntary muscles
- B. Cardiac muscles
- C. Voluntary muscles
- D. All the above

Answer:



Watch Video Solution

6. Muscles found in heart are

- A. Voluntary muscles
- B. Cardiac muscles
- C. Involuntary muscles
- D. All the above

Answer:



Watch Video Solution

7. Tissues found in growing regions are

A. Meristematic tissues

B. Complex tissues

C. Simple tissues

D. Permanent tissues

Answer:



Watch Video Solution

8. Meristematic tissues have

A. small, thin-walled cells rich in cytoplasm

B. Small, thick-walled cells

C. Dead cells

D. Cells which can divide for a short period

Answer:



Watch Video Solution

9. Sclerenchyma is a

A. Thick-walled tissue consisting of dead cells

B. Thick-walled tissue consisting of living cells

C. Thin-walled, living cells

D. None of the above

Answer:



Watch Video Solution

10. Vascular tissues in a plant are

A. Xylem and phloem

B. Xylem, phloem and epidermis

C. Only xylem

D. Only phloem

Answer:



Watch Video Solution

Summative Worksheet II Fill In The Blank

1. About two-third of the body weight is made up of _____ tissue.



[Watch Video Solution](#)

2. Bone is a type of _____ tissue.



[Watch Video Solution](#)

3. Nerve cells are also called _____ .



Watch Video Solution

4. Nerve cells are found in _____ and _____ .



Watch Video Solution

5. _____ muscles are found in the walls of stomach and intestine.



Watch Video Solution

6. Cells are living, elongated and thickened at the corners in _____ tissue.



[Watch Video Solution](#)

7. Xylem and phloem constitute _____ tissue in a plant body.



[Watch Video Solution](#)

8. Water moves upward inside the plant body through _____ tissue.



[Watch Video Solution](#)

9. Movement of food material in the plant body takes place through _____ tissue.



[Watch Video Solution](#)

10. Permanent tissues arise from _____ tissues.



[Watch Video Solution](#)

11. Cells of _____ tissue bring about increase in plant length.



[Watch Video Solution](#)

Summative Worksheet Iii

1. Name the different types of animal tissues.



[Watch Video Solution](#)

2. Describe the structure and functions of different types of animal tissues.



[Watch Video Solution](#)

3. How is connective tissue different from other tissues?



[Watch Video Solution](#)

4. Mention the main characteristics of meristematic tissues.



Watch Video Solution

5. Where are the location of meristematic tissue in plants?



Watch Video Solution

6. What is the function of meristematic tissue?



[Watch Video Solution](#)

7. Name the different types of plant tissues.



[Watch Video Solution](#)

8. Where are stomata present in a plant cell?



[Watch Video Solution](#)

9. State the function of stomata?



[Watch Video Solution](#)

10. Name the tissue which takes part in the movement of water and minerals in the body.



[Watch Video Solution](#)

Summative Worksheet Iv

1. Differentiate between

Parenchyma and Collenchyma



[Watch Video Solution](#)

2. What is the difference between collenchyma and sclerenchyma?



[Watch Video Solution](#)

3. Differentiate between

Skeletal muscle tissue and Cardiac muscle tissue.



[Watch Video Solution](#)

4. Differentiate between

Squamous epithelium and Columnar epithelium



Watch Video Solution

5. Differentiate between cells of Meristematic tissue and permanent tissue



Watch Video Solution

6. Differentiate between

Simple and Complex tissues.



Watch Video Solution

Summative Worksheet V

1. Name the tissue found in the following:

At the tips of root and stem



Watch Video Solution

2. Name the tissue found in the following:

On the surface of roots



Watch Video Solution

3. Name the tissue found in the following:

Lining of stomach



Watch Video Solution

4. Name the tissue found in the following:

Wall of heart



[Watch Video Solution](#)

5. Name the tissue found in the following:

Blood



[Watch Video Solution](#)

6. Name the tissue found in the following:

Brain



[Watch Video Solution](#)

7. Name the tissue found in the following:

Mango peel



[Watch Video Solution](#)

1. Find the odd one out, giving reasons :

Cyton, dendrite, plasma, axon



Watch Video Solution

2. Find the odd one out, giving reasons :

Bone, cartilage, tendon, blood



Watch Video Solution

3. Find the odd one out, giving reasons :

Bone, epithelium, tendon, cartilage



Watch Video Solution

4. Find the odd one out, giving reasons :

Xylem, collenchyma, parenchyma,
sclerenchyma



Watch Video Solution

5. Find the odd one out, giving reasons :

Vessels, companion cells, sieve tubes, collenchyma.



[Watch Video Solution](#)

Summative Worksheet Vii Mark T True Or F False

1. Meristematic cells are small and thin-walled.



[Watch Video Solution](#)

2. Cells of the permanent tissues lack the property of division.



Watch Video Solution

3. Permanent tissue is an immature tissue.



Watch Video Solution

4. Stomata are present in the ground tissue of the leaf.





Watch Video Solution

5. Xylem tissue is made of sieve tubes.



Watch Video Solution

6. Epithelial tissue is a protective tissue.



Watch Video Solution

7. Muscular tissues show the property of contraction and expansion.



[Watch Video Solution](#)

8. Cyton and axon are the parts of a nerve cell.



[Watch Video Solution](#)

9. The fluid part of the blood is called plasma.



[Watch Video Solution](#)

10. Sclerenchyma consists of thick-walled dead cells.



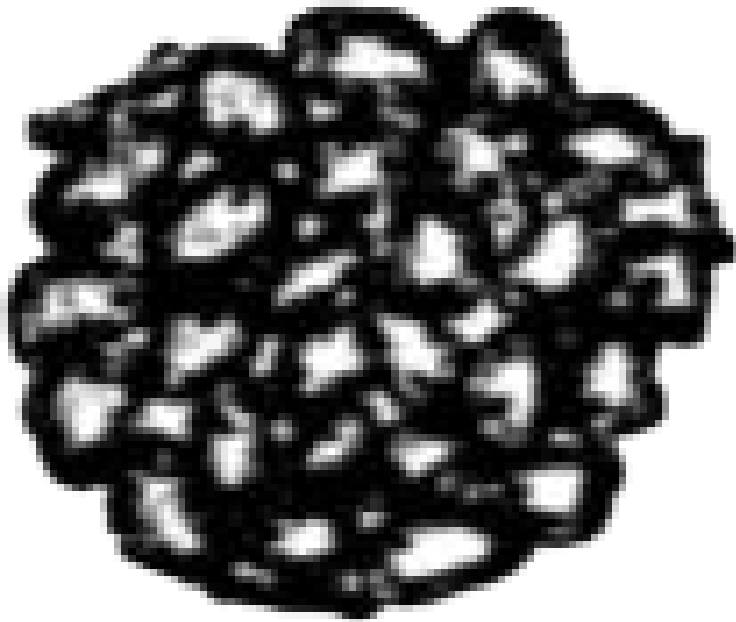
Watch Video Solution

11. Phloem is a complex tissue.



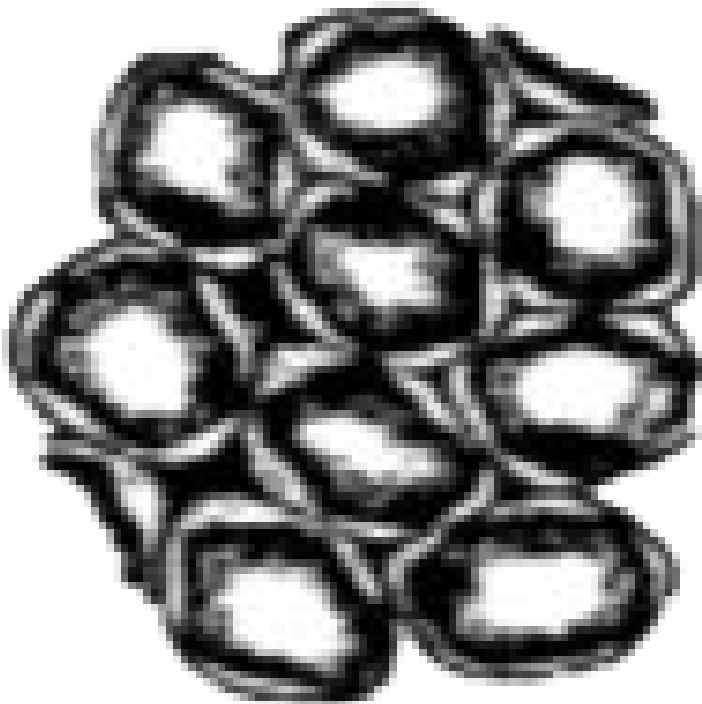
Watch Video Solution

1. See the figure shown below. Identify this figure giving reasons.



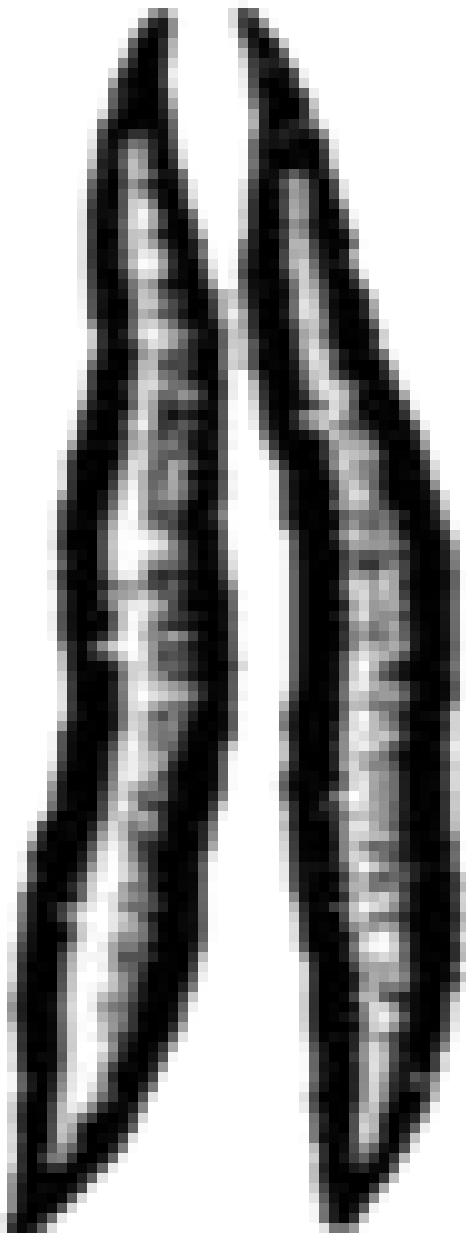
[Watch Video Solution](#)

2. See the figure shown below. Identify this figure giving reasons.



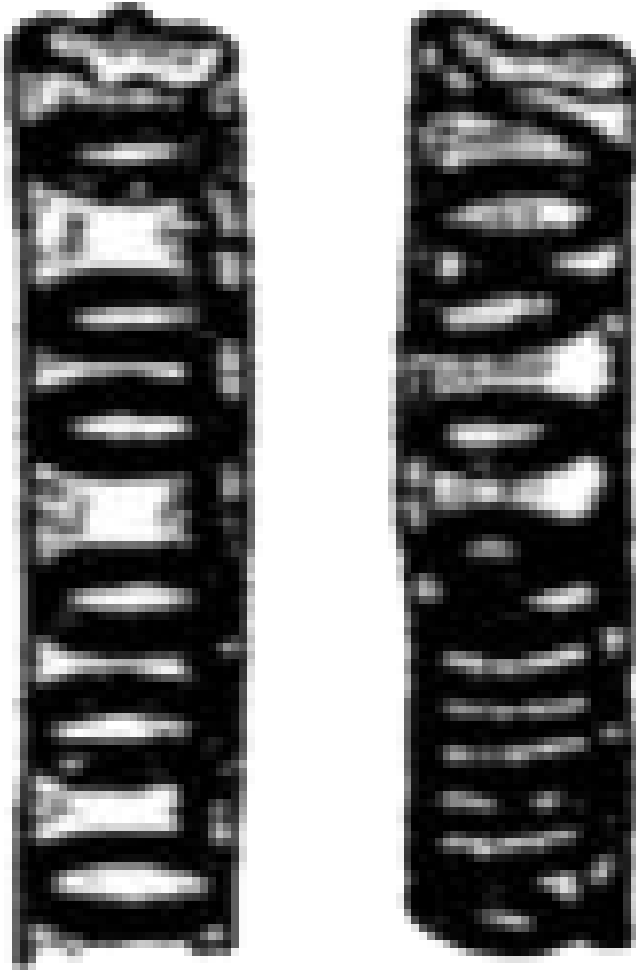
Watch Video Solution

3. See the figure shown below. Identify this figure giving reasons.



Watch Video Solution

4. See the figure shown below. Identify this figure giving reasons.



Watch Video Solution

