



# BIOLOGY

## BOOKS - NAVNEET PUBLICATION

### PLANTS : STRUCTURE AND FUNCTION

#### Question Bank

1. Fill in the blanks:

The part that grows from inside the seed towards the soil is called the \_\_\_\_\_



[Watch Video Solution](#)

2. Fill in the blanks:

\_\_\_\_\_ are the hair like processes near the root tips.



[Watch Video Solution](#)

3. Fill in the blanks:

Monocotyledonous plants have \_\_\_\_\_ roots.



[Watch Video Solution](#)

4. Fill in the blanks:

The part of the stem between two nodes is called an \_\_\_\_\_.



[Watch Video Solution](#)

5. Fill in the blanks:

The broad spread out part of the leaf is called \_\_\_\_\_ while its tip is called the \_\_\_\_\_.



[Watch Video Solution](#)

6. Fill in the blanks:

In the bud condition the petals are covered by leaf like whorl called \_\_\_\_\_.



[Watch Video Solution](#)

7. Write whether following statements are true or false. If false correct and rewrite them:

The part that grows above the soil is called the radical.



[Watch Video Solution](#)

**8.** Write whether following statements are true or false. If false correct and rewrite them:

Fiber like roots arising from the stem are called fibrous roots



**Watch Video Solution**

**9.** Write whether following statements are true or false. If false correct and rewrite them:

Radish and carrot are modified underground stems.



[Watch Video Solution](#)

**10.** Write whether following statements are true or false. If false correct and rewrite them:

Leaves with undivided leaf blade and a single mid rib are called compound leaves .



[Watch Video Solution](#)

**11.** Write whether following statements are true or false. If false correct and rewrite them:

Fertilized ovules form the fruit.



[Watch Video Solution](#)

**12.** Give examples of three plants that have:

Spiny fruits



[Watch Video Solution](#)

**13.** Give examples of three plants that have:

Spiny stem



[Watch Video Solution](#)

**14.** Give examples of three plants that have:  
red flowers



**Watch Video Solution**

**15.** Give examples of three plants that have:  
yellow flowers



**Watch Video Solution**



**16.** Give examples of three plants that have:  
leaves which close at night



**Watch Video Solution**

**17.** Give examples of three plants that have:  
single seeded fruits



**Watch Video Solution**

**18.** Give examples of three plants that have:  
many seeded fruits



**Watch Video Solution**

**19.** Name the following:

Modified roots



**Watch Video Solution**

**20.** Name the following:

Arrangement of leaves



**Watch Video Solution**

**21.** Name the following:

shape of the leaves



**Watch Video Solution**

**22.** Name the following:

parts of the stamen



**Watch Video Solution**

**23.** Name the following:

parts of carpel



**Watch Video Solution**

**24.** What are the similarities and differences between?

Jowar and moong



**Watch Video Solution**

**25.** What are the similarities and differences between?

onion and coriander



**Watch Video Solution**

**26.** What are the similarities and differences between?

Leaves of banana and mango



**Watch Video Solution**

**27.** What are the similarities and differences between?

coconut tree and jowar stalk plant



**Watch Video Solution**

**28.** Certain properties are mentioned. Find a leaf corresponding to each property and describe those plants:

Leaves with smooth surface.



**Watch Video Solution**

**29.** Certain properties are mentioned. Find a leaf corresponding to each property and describe those plants:

Leaves with rough surface : parijataka leaf  
(night flowering jasmine)



[Watch Video Solution](#)

**30.** Certain properties are mentioned. Find a leaf corresponding to each property and describe those plants :

Fleshy leaf : Eicchornia leaf (water hyacinth)



[Watch Video Solution](#)

**31.** Certain properties are mentioned. Find a leaf corresponding to each property and

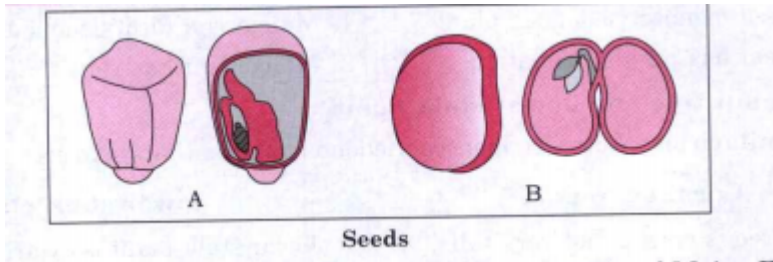


describe those plants:

Spines on leaf.

 [Watch Video Solution](#)

**32.** Explain the following images in your own words:  
words:



 [Watch Video Solution](#)

**33.** Answer the following questions:

Describe the function of various parts of a plant.



**Watch Video Solution**

**34.** Answer the following questions:

Describe the structure of tap root



**Watch Video Solution**

**35.** Answer the following questions:

What are the different types of roots?



**Watch Video Solution**

**36.** Answer the following questions:

What are the different parts of stem?



**Watch Video Solution**

**37.** Answer the following questions:

Describe the different types of leaf.



**Watch Video Solution**

**38.** Answer the following questions:

What is venation? Describe the types of venation with suitable examples.



**Watch Video Solution**

**39.** Answer the following questions:

What are different types of leaves according to their arrangement of leaves on the stem and their shapes?



**Watch Video Solution**

**40.** Observe any one flower and its various parts and describe it in your own words.



**Watch Video Solution**

**41. Use your brain power!**

what would have happened if plants like tamarind, banyan and mango had fibrous roots?



**Watch Video Solution**

**42. Use your brain power!**

What will happen if the root tip is injured?



**Watch Video Solution**

**43.** Use your brain power!

Which types of roots do the fenugreek spinach and onion plants have?



**Watch Video Solution**

**44.** Use your brain power!

Of what use to a plant are the insects flitting about around its flowers?



**Watch Video Solution**

**45.** Draw neat and well labeled diagrams:

(1) Tap root



**Watch Video Solution**

**46.** Draw neat and well labelled diagrams:

different parts of the stem



**Watch Video Solution**



**47.** Draw neat and well labelled diagrams:  
different parts of the leaf.



**Watch Video Solution**

**48.** Answer the following questions:

Which stems are used as vegetables?



**Watch Video Solution**

**49.** Answer the following questions:

Which leaf laminae are used as plates for eating?



**Watch Video Solution**

**50.** Answer the following questions:

Which dicotyledonous seeds are used for cooking purpose?



**Watch Video Solution**

**51. Answer the question orally:**

Are the stipules present in all kinds of plants?



**Watch Video Solution**

**52. Answer the question orally:**

Which part of plant is the pillar like structures of banyan tree?



**Watch Video Solution**

**53.** Answer the question orally:

Where is 250 year old banyan tree located?



**Watch Video Solution**

**54.** Answer the question orally:

which kind of venation is present on the banana leaf?



**Watch Video Solution**