



BIOLOGY

BOOKS - PSEB

NUTRITION IN ANIMALS

Exercise

1. Fill in the blanks: The main steps of nutrition in humans are _____, _____, _____, _____, and _____.



[Watch Video Solution](#)

2. Fill in the blanks: The largest gland in the human body is _____.



[Watch Video Solution](#)

3. Fill in the blanks: The stomach releases hydrochloric acid and _____ juices which act on food.



[Watch Video Solution](#)

4. Fill in the blanks: The inner wall of the small intestine has many finger-like outgrowths called _____.



[Watch Video Solution](#)

5. Fill in the blanks: Amoeba digests its food in the _____.



[Watch Video Solution](#)

6. Mark 'T' if the statement is true and 'F' if it is false:- Digestion of starch starts in the stomach.



[Watch Video Solution](#)

7. Mark 'T' if the statement is true and 'F' if it is false:- The tongue helps in mixing food with saliva.



[Watch Video Solution](#)

8. Mark 'T' if the statement is true and 'F' if it is false:- The gall bladder temporarily stores bile.



Watch Video Solution

9. Mark 'T' if the statement is true and 'F' if it is false:- The ruminants bring back swallowed grass into their mouth and chew it for some time.



Watch Video Solution

10. Fat is completely digested in the

A. stomach

B. mouth

C. small intestine

D. large intestine

Answer:



Watch Video Solution

11. Water from the undigested food is absorbed mainly in the

A. stomach

B. foodpipe

C. small intestine

D. large intestine

Answer:



Watch Video Solution

12. Match the items of Column I with those given in Column II:

Column I	Column II
<u>Food components</u>	<u>Product(s) of digestion</u>
Carbohydrates	Fatty acids and glycerol
Proteins	Sugar
Fats	Amino acids



[Watch Video Solution](#)

13. What are villi? What is their location and function?



[Watch Video Solution](#)

14. Where is the bile produced? Which component of the food does it help to digest?



Watch Video Solution

15. Name the type of carbohydrate that can be digested by ruminants but not by humans. Give the reason also.



Watch Video Solution

16. Why do we get instant energy from glucose?



[Watch Video Solution](#)

17. Which part of the digestive canal is involved in: - absorption of food _____.



[Watch Video Solution](#)

18. Which part of the digestive canal is involved in: - chewing of food _____.



Watch Video Solution

19. Which part of the digestive canal is involved in: - killing of bacteria _____.



Watch Video Solution

20. Which part of the digestive canal is involved in: -complete digestion of food _____.



[Watch Video Solution](#)

21. Which part of the digestive canal is involved in: - formation of faeces _____.



[Watch Video Solution](#)

22. Write one similarity and one difference between the nutrition in amoeba and human beings.



Watch Video Solution

23. Match the items of Column I with suitable items in Column II:

Column I

- (a) Salivary gland
- (b) Stomach
- (c) Liver
- (d) Rectum
- (e) Small intestine
- (f) Large intestine

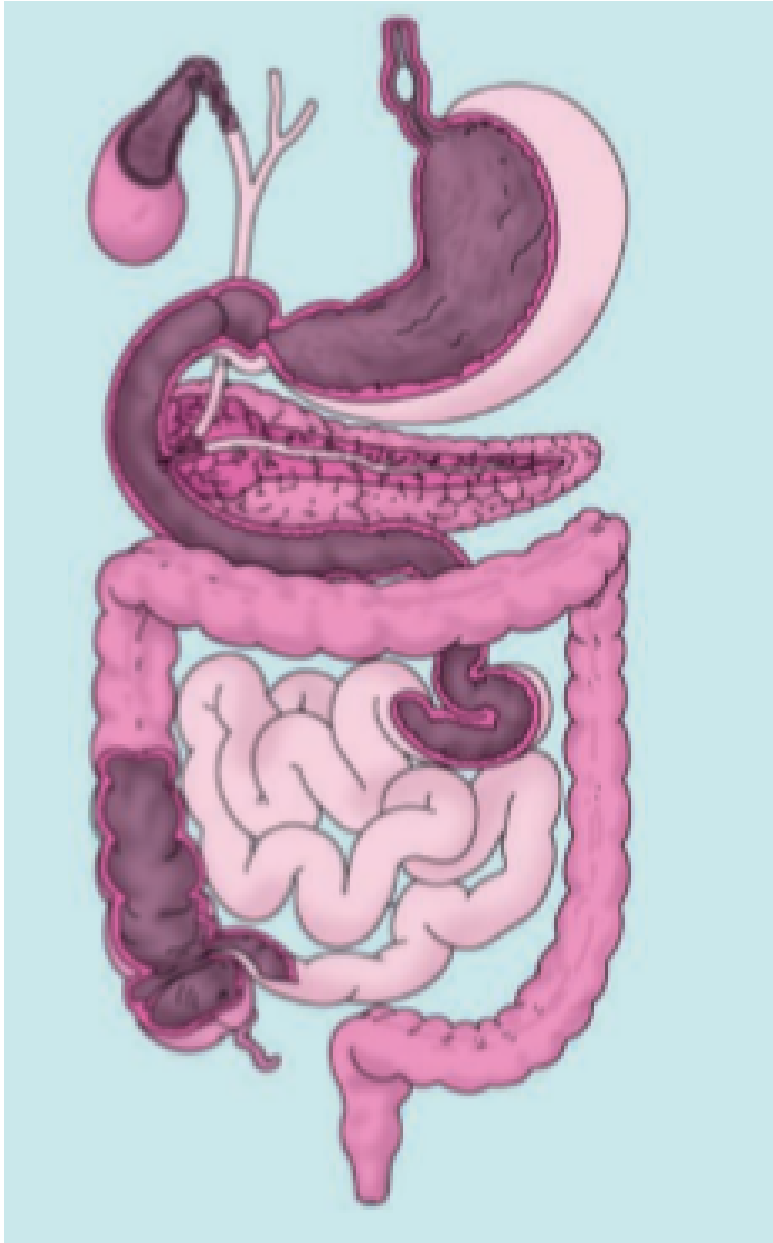
Column II

- (i) Bile juice secretion
- (ii) Storage of undigested food
- (iii) Saliva secretion
- (iv) Acid release
- (v) Digestion is completed
- (vi) Absorption of water
- (vii) Release of faeces



Watch Video Solution

24. Label Fig. 2.11 of the digestive system:





Watch Video Solution

25. Can we survive only on raw, leafy vegetables/grass? Discuss.



Watch Video Solution