



# PHYSICS

## NCERT - NCERT Physics(Hinglish)

### CHEMICAL EFFECTS OF ELECTRIC CURRENT

#### Questions

1. Fill in the blank

Most liquids that conduct electricity are

solutions of \_\_\_\_\_, \_\_\_\_\_ and \_\_\_\_\_



**Watch Video Solution**

## 2. Fill in the blank

The passage of an electric current through a solution causes \_\_\_\_\_ effects.



**Watch Video Solution**

## 3. Fill in the blank

If you pass current through copper sulphate

solution, copper gets deposited on the plate connected to the \_\_\_\_\_ terminal of the battery.



[Watch Video Solution](#)

#### 4. Fill in the blank

The process of depositing a layer of any desired metal on another material by means of electricity is called \_\_\_\_\_



[Watch Video Solution](#)

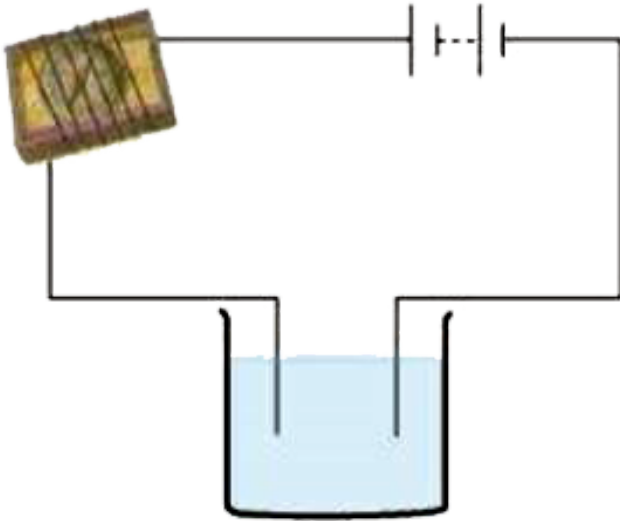
5. When the free ends of a tester are dipped into a solution, the magnetic needle shows deflection. Can you explain the reason?



[Watch Video Solution](#)

6. Name three liquids, which when tested in the manner shown in may cause the magnetic

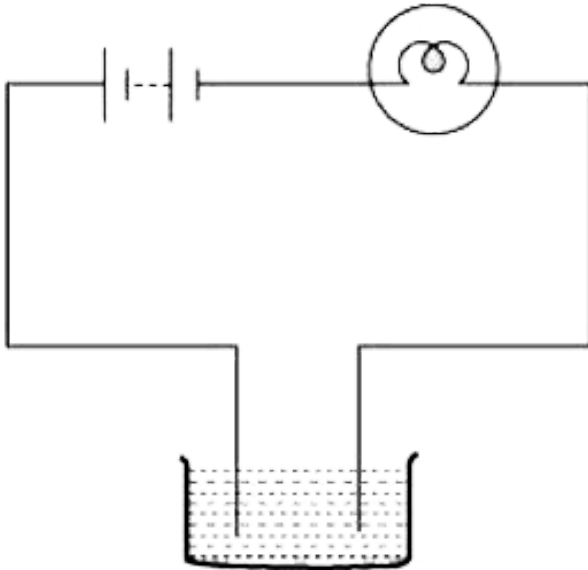
needle to deflect.



[Watch Video Solution](#)

7. The bulb does not glow in the setup shown in List the possible reasons. Explain your

answer.



[Watch Video Solution](#)

**8.** A tester is used to check the conduction of electricity through two liquids, labelled A and

B. It is found that the bulb of the tester glows brightly for liquid A while it glows very dimly for liquid B. You would conclude that

- (i) liquid A is a better conductor than liquid B.
- (ii) liquid B is a better conductor than liquid A.
- (iii) both liquids are equally conducting.
- (iv) conducting properties of liquid cannot be compared in this manner.



**Watch Video Solution**

**9.** Does pure water conduct electricity? If not, what can we do to make it conducting?



**Watch Video Solution**

**10.** In case of a fire, before the firemen use the water hoses, they shut off the main electrical supply for the area. Explain why they do this.



**Watch Video Solution**



**11.** In case of a fire, before the firemen use the water hoses, they shut off the main electrical supply for the area. Explain why they do this.



**Watch Video Solution**

**12.** A child staying in a coastal region tests the drinking water and also the seawater with his tester. He finds that the compass needle deflects more in the case of seawater. Can you explain the reason?





[Watch Video Solution](#)

**13.** Is it safe for the electrician to carry out electrical repairs outdoors during heavy downpour? Explain.



[Watch Video Solution](#)

**14.** Paheli had heard that rain water is as good as distilled water. So, she collected some rain water in a clean glass tumbler and tested it using a tester. To her surprise, she found that

the compass needle showed deflection. What could be the reasons?



**Watch Video Solution**

**15.** Prepare a list of objects around you that are electroplated.



**Watch Video Solution**

**16.** The process that you saw in Activity 14.7 is used for purification of copper. A thin plate of

pure copper and a thick rod of impure copper are used as electrodes. Copper from impure rod is sought to be transferred to the thin copper plate. Which electrode should be attached to the positive terminal of the battery and why?



**Watch Video Solution**