



BIOLOGY

BOOKS - MTG IIT JEE FOUNDATION

FOOTSTEPS TOWARDS NEET

Mcqs

1. The shape of cocci bacterium is

A. rod

B. round

C. spiral

D. comma

Answer: B



Watch Video Solution

2. The hormone insulin

A. prepares the body to fight or run

B. regulates the amount of sugar in blood

C. stimulates growth of the body

D. none of these.

Answer: B



Watch Video Solution

3. The crop cultivated by sowing seeds directly into the soil is

A. paddy

B. Sorghum

C. tomatoes

D. chillies

Answer: B



Watch Video Solution

4. Mosquitoes are vectors for

I. Dengue fever

II. Malaria

III. Cholera

A. I only

B. I and II

C. II and III

D. I,II and III

Answer: B



Watch Video Solution

5. Infectious diseases caused by microorganisms can spread through

I. body contact

II. air

III. Vector

A. I and II

B. I and III

C. II and III

D. I,II and III

Answer: D



Watch Video Solution

6. Which of the following is a closely related character of Euglena with higher plants?

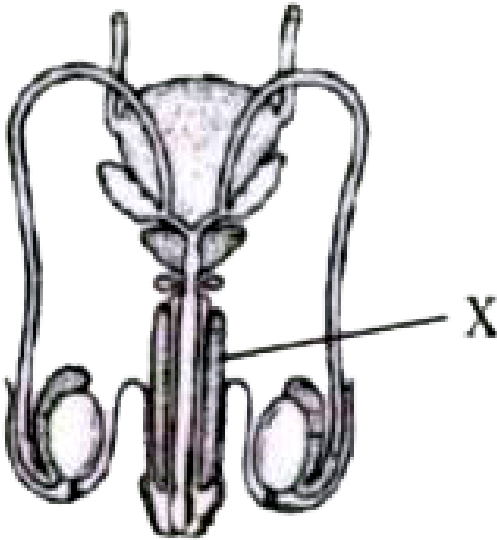
- A. Presence of a flagella
- B. Absence of cell wall
- C. Single-celled body
- D. Presence of chlorophyll

Answer: D



Watch Video Solution

7. Refer to the given figure.



Which of the following is correct about the part labelled as X ?

- A. It is a muscular and erectile tissue.
- B. It aids in delivering the sperms into the vagina of the female.
- C. It produces the sperms.

D. Both (a) and (b)

Answer: D



Watch Video Solution

8. Select the correct option which best suits the given descriptions for P, Q, R and S.

P - A simple tool used for removing weeds.

Q - A tool that is used for ploughing the field.

R- A tool that is used for sowing with the help of tractor.

S - A simple tool used for cutting of crops.

A. P- Sickle,Q- Plough,R- Cultivator,S- Khurpi

B. P-Sickle, Q- Cultivator , R-Hoe , S-Cutter

C. P-Khurpi,Q- Plough, R- Seed drill , S- Hoe

D. P-Hoe, Q-Cultivator, R- Seed drill, S- Sickle

Answer: D



Watch Video Solution

9. Statement 1: To maintain soil fertility, it is essential to prevent desertification and deforestation.

Statement 2: Roots of plants grasp soil well and prevent removal of top soil by air, water, etc.

- A. Both statements 1 and 2 are true and statement 2 is the correct explanation of statement 1.
- B. Both statements 1 and 2 are true but statement 2 is not the correct explanation of statement 1.
- C. Statement 1 is true but statement 2 is false.
- D. Both statements 1 and 2 are false.

Answer: A



Watch Video Solution

10. A woman has a 28 day menstrual cycle. If her menstruation started on April 13, when is she expected

to ovulate?

A. April 19

B. April 24

C. April 27

D. May 1

Answer: C



Watch Video Solution

11. The animal shown in the figure is specially conserved in



- A. Kaziranga National Park
- B. Dudhwa National Park
- C. Nanda Devi Biosphere Reserve
- D. Similipal National Park

Answer: A

 [Watch Video Solution](#)

12. Which of the following are the effects due to the mismanagement of timber logging?

(i) Flooding

(ii) Soil erosion

(iii) Growing economy

A. (i) and (ii)

B. (i) and (iii)

C. (ii) and (iii)

D. (i),(ii) and (iii)

Answer: A



Watch Video Solution

13. Indian Institute of Forest Management is situated at

A. Bhopal

B. Dehradun

C. Coimbatore

D. New Delhi.

Answer: A



Watch Video Solution

14. WWF works in the field of

A. Wildlife conservation

B. child labour

C. forest conservation

D. water conservation.

Answer: A



Watch Video Solution

15. The management of forest or woodlands is known

as

A. sericulture

B. silviculture

C. apiculture

D. pisciculture

Answer: B



Watch Video Solution

16. Select the option which correctly fills the blanks.

(i) _____ and _____ help in the decomposition of plant and animal wastes.

(ii) When too much of water stands in the field and accumulates around the roots of the plant, it is called

(iii) _____ is a simple tool used for removing weeds and ploughing the soil.

A. (i)- Bacteria , fungi , (ii)-water logging , (iii) Hoe

B. (i)-Plants, fungi , (ii)-irrigation , (iii)-Seed drill

C. (i)-Pests, insects , (ii) manuring , (iii)-Tractor

D. (i)-Rodents , bacteria , (ii)-field fallow , (iii)-

Harvester

Answer: A



Watch Video Solution

17. Identify from the following, the process of asexual reproduction in Hydra.

- A. Budding
- B. Sporulation
- C. Fragmentation
- D. Binary fission

Answer: A



Watch Video Solution

18. TSH and ACTH are secreted by

A. pancreas

B. adrenal glands

C. thyroid gland

D. pituitary gland.

Answer: D



Watch Video Solution

19. Main source of vitamin C is

A. milk

B. citrus fruits

C. sugarcane juice

D. dry fruits

Answer: B



Watch Video Solution

20. Smog is a combination of

A. fire and water

B. smoke and fog

C. water and smoke

D. air and water.

Answer: B



Watch Video Solution

21. Read the following statements.

A. A few rivers in India are like sewers.

B. Some cattle may die by feeding on plastic bags.

C. Installation of wastewater treatment plants have cleaned up most of the rivers in India.

D. Sludge is effectively utilised in the production of biogas.

A. A,B and C

B. A,B and D

C. B, C and D

D. A,C and D

Answer: B

 [Watch Video Solution](#)

22. In the given figure, X is formed by the process of



A. commensalism

B. parasitism

C. symbiosis

D. both (a) and (c).

Answer: C



Watch Video Solution

23. Which of the following do not play any role in the greenhouse effect?

A. CO_2 and N_2

B. O_2 and N_2

C. O_2 and water vapour

D. O_2 , N_2 and water vapour

Answer: B



Watch Video Solution

24. Eutrophication is caused by

A. excessive use of fertilizers

B. rapidly growing crops

C. monocropping

D. none of these.

Answer: A



Watch Video Solution

25. Identify the incorrect pair.

- A. Rice - Kharif crop
- B. Cotton - Rabi crop
- C. Maize - Kharif crop
- D. Mustard - Rabi crop

Answer: B



Watch Video Solution

26. Mushroom grows on

A. sandy soil

B. wet soil

C. dry soil

D. all of these.

Answer: B



Watch Video Solution

27. Refer to the given categories according to the IUCN

Red List of threatened species.

(i) Endangered

(ii) Vulnerable

(iii) Critically endangered

(iv) Least concern

(v) Near threatened

Select the correct order of the species according to their conservation priority.

A. $(iii) > (i) > (ii) > (iv) > (v)$

B. $(ii) > (i) > (iii) > (iv) > (v)$

C. $(iii) > (i) > (ii) > (v) > (iv)$

D. $(ii) > (i) > (iii) > (v) > (iv)$

Answer: C



Watch Video Solution

28. The branch of biology which deals with the study of microorganisms is called

A. botany

B. zoology

C. microbiology

D. genetics

Answer: C



Watch Video Solution

29. An unicellular alga is

A. Nostoc

B. Spirogyra

C. Chlamydomonas

D. Vaucheria

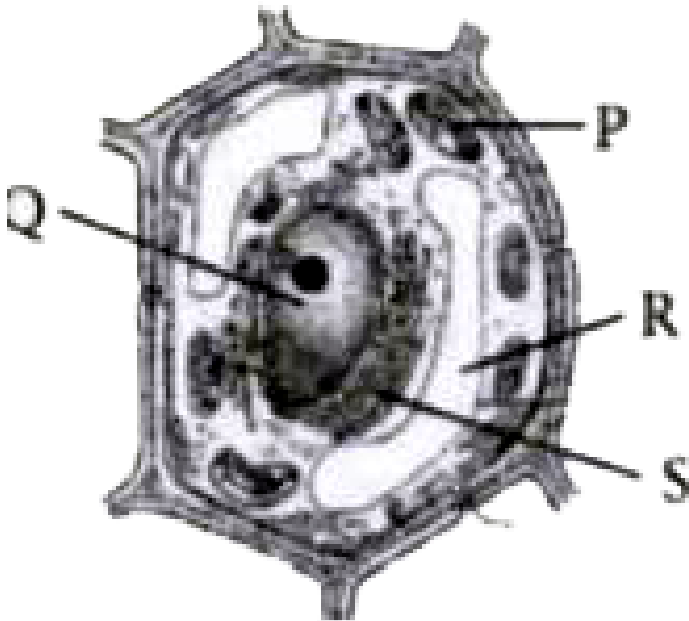
Answer: C



Watch Video Solution

30. Anil wants to see microscopic view of the organelle which takes part in the transmission of hereditary

characters from one generation to the next. Which labelled part will his teacher focus to make a microscopic view of the organelle?



A. P

B. Q

C. R

D. S

Answer: B



Watch Video Solution

31. Which of the following relates to multipurpose protected areas meant for conservation of wildlife?

- A. National parks
- B. Biosphere reserves
- C. Wildlife sanctuaries
- D. None of these

Answer: B



Watch Video Solution

32. Which of the following are the characteristics of viruses?

- A. They are the smallest microorganisms.
- B. They are active inside the host cell.
- C. Antibiotics do not have any effect on them.
- D. All of these

Answer: D



Watch Video Solution

33. Which of the following represents resting stage in the life cycle of butterfly?

A. Caterpillar

B. Larva

C. Pupa

D. Tadpole

Answer: C



Watch Video Solution

34. Which period shows negative growth?

A. Infancy

B. Childhood

C. Adolescence

D. Old age

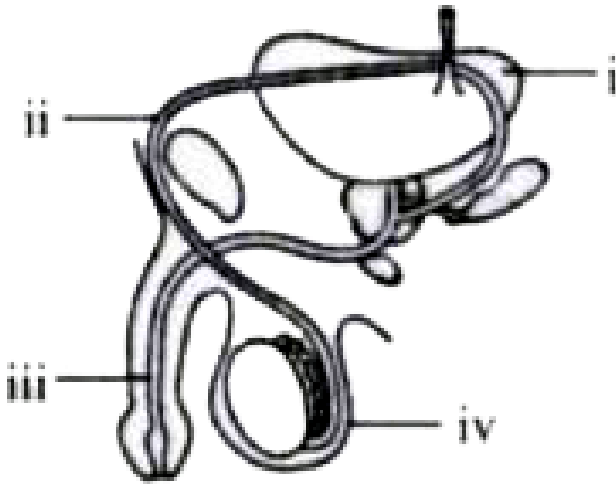
Answer: D



Watch Video Solution

35. The diagram shows the left side view of the male reproductive system. Select the correct option to

identify the parts labelled as i, ii, iii and iv.



A.

Sperm duct	Urethra	Scrotum	Urinary bladder
<i>i</i>	<i>ii</i>	<i>iii</i>	<i>iv</i>

B.

Sperm duct	Urethra	Scrotum	Urinary bladder
<i>ii</i>	<i>iii</i>	<i>iv</i>	<i>i</i>

C.

Sperm duct	Urethra	Scrotum	Urinary bladder
<i>iii</i>	<i>ii</i>	<i>i</i>	<i>iv</i>

D.

Sperm duct	Urethra	Scrotum	Urinary bladder
<i>ii</i>	<i>iv</i>	<i>i</i>	<i>iii</i>

Answer: B



Watch Video Solution

36. Fill in the blanks in the given paragraph and select the correct option.

_____ are the tubes that carry urine out of the kidneys.

Urine is then stored in a urine collecting sac called the

_____. Urine is stored here until it is excreted through

the _____

A. Ureters, urethra, urinary bladder

B. Ureters, urinary bladder, urethra

C. Urinary bladder, ureters, urethra

D. Urethra, ureters, urinary bladder

Answer: B



Watch Video Solution

37. Which of the following is a protozoan disease?

A. Tetanus

B. Measles

C. Filariasis

D. Sleeping sickness

Answer: D



Watch Video Solution

38. Bacteria living in the intestine of herbivores help in the digestion of

A. cellulose

B. proteins

C. fats

D. vitamins

Answer: A



Watch Video Solution

39. Which statement about pathogens is true?

- A. All pathogens are non-parasitic.
- B. All microorganisms are pathogens.
- C. All pathogens are harmful to humans.
- D. All pathogens are beneficial to humans.

Answer: C



Watch Video Solution

40. Identify from the following, a correct statement with reference to asexual reproduction.

A. It involves fusion of units called gametes.

B. It involves only one parent.

C. It is the most common type of reproduction in higher animals.

D. It involves meiosis type of cell division.

Answer: B



Watch Video Solution

41. Which of the following statements are true?

(i) Cigarette smoke is a source of carbon monoxide.

(ii) Smog is a combination of smoke and fog which mainly contains CFCs.

(iii) Burning of coal releases fly ash.

(iv) Acid rain increases the pH of rivers and lakes.

A. (i) and (ii)

B. (i) and (iii)

C. (ii) and (iv)

D. (iii) and (iv)

Answer: B



Watch Video Solution

42. Which of these might indicate a possible drug problem with adolescents?

(i) Always borrowing or stealing money

(ii) Having watery eyes and dilated pupils

(iii) Sudden resistance to discipline at home or at school

(iv) Hiding in quiet places like bathrooms, storerooms, stairways, etc.

A. (i) and (iii) only

B. (i), (ii) and (iii) only

C. (ii), (iii) and (iv) only

D. (i), (ii) (iii) and (iv)

Answer: D



Watch Video Solution

43. An example of people's participation in conservation of forest and wildlife is

A. Chenab Valley, Kashmir

B. Chamba Valley, Himachal Pradesh

C. Silent Valley, Kerala

D. Flower Valley, Uttarakhand.

Answer: C



Watch Video Solution

44. Identify the wrong pair from the following.

- A. Euglena - Binary fission
- B. Yeast - Budding
- C. Spirogyra - Fragmentation
- D. Hydra - Multiple fission

Answer: D



Watch Video Solution

45. Identify the incorrect statement from the following with reference to mitochondria.

A. They are found both in plant cells and animal cells.

B. Their inner membrane has projections called cristae.

C. They contain different kinds of colouring pigments.

D. They are involved in production of energy

Answer: C



Watch Video Solution

46. The bioindicators of air pollution are

A. algae

B. ferns

C. mushrooms

D. lichens

Answer: D



Watch Video Solution

47. A boy is 15 year old and 150 cm tall. At the end of the growth period, he is likely to be (Note : Percentage of full height of 15 years old boy is 95%)

A. 160 cm tall

B. 140 cm tall

C. 158 cm tall

D. 168 cm tall.

Answer: C



Watch Video Solution

48. Harmful ultraviolet rays coming from sun are absorbed by

A. oxygen

B. carbon dioxide

C. ozone layer

D. dust particles of atmosphere.

Answer: C



Watch Video Solution

49. To prevent seed-borne diseases, the seeds must be

- A. sown at right depth
- B. spaced at right intervals
- C. sown in highly wet soil
- D. treated with fungicide solutions.

Answer: D



Watch Video Solution

50. Which of the following rotation of crops will reduce dependence on the use of chemical fertilizers?

- A. Rice and chilli
- B. Wheat and potato

C. Potato and rice

D. Gram and rice

Answer: D



Watch Video Solution

51. Bacteria are used in the production of

I. Alcohol

II. Cheese

III. Yoghurt

A. I only

B. II and III

C. I and III

D. I, II and III

Answer: B



Watch Video Solution

52. A microorganism X is used in the making of bread.

In production of which of these is X also required?

A. Cheese

B. Vinegar

C. Wine

D. Yoghurt

Answer: C



Watch Video Solution

53. Bacteriophage gets attached to the host cell with the help of

A. tail sheath

B. tail fibres

C. spikes

D. collar.

Answer: B



Watch Video Solution

54. Which of the following is not an example of lichen?

A. Cladonia

B. Usnea

C. Giardia

D. Both (a) and (b)

Answer: C



Watch Video Solution

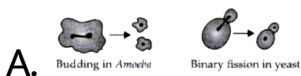
55. Conservation of resources means

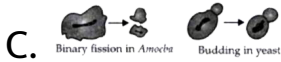
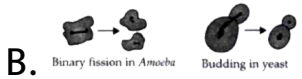
- A. maintaining the earth's resources in their original state
- B. using earth's resources wisely
- C. using resources not in a wasteful manner
- D. all of these.

Answer: D

 [Watch Video Solution](#)

56. Which one out of the following sets of figures correctly depicts reproduction in Amoeba and yeast ?





Answer: B

 [Watch Video Solution](#)

57. Choose the incorrectly matched pair.

A. Group of tissues - Organ

B. Living substance of the cell - Protoplasm

C. Leucoplast - Colourless plastids

D. Vacuoles - Suicidal bags

Answer: D



Watch Video Solution

58. Which method of water purification does not kill microorganisms?

A. Boiling

B. Filtration

C. Chlorination

D. Distillation

Answer: B



Watch Video Solution

59. In girls, puberty starts at the age of

- A. eight years
- B. seven years
- C. eleven years
- D. nineteen years.

Answer: C



Watch Video Solution

60. Intercropping is

- A. growing of one particular crop in a field
- B. growing of two or more crops together in a field
in definite pattern
- C. growing two crops in alternate seasons
- D. none of these.

Answer: B



Watch Video Solution

61. Which of the following soil requires less irrigation?

A. Sandy soil

B. Alluvial soil

C. Loamy soil

D. Clayey soil

Answer: D



Watch Video Solution

62. The size of viruses ranges from

A. 0.015 to 0.2 micron

B. 4 to 8 micron

C. 0.001 to 0.002 micron

D. 1 to 2 micron.

Answer: A



Watch Video Solution

63. Amoebic dysentery is caused by a

A. *Trypanosoma brucei*

B. *Escherichia coli*

C. *Entamoeba histolytica*

D. *Plasmodium*.

Answer: C



Watch Video Solution

64. Drought brings about

A. flooding

B. volcanic eruptions

C. decreased production of food

D. increased photosynthesis in plants.

Answer: C



Watch Video Solution

65. Which of the following is a secondary sexual characteristic of a boy?

A. Growth of facial hair

B. Development of bones and increase in muscle mass

C. Growth of pubic hair

D. All of these

Answer: D



Watch Video Solution

66. A hotspot in India is

- A. Eastern Ghats
- B. Deccan Plateau
- C. Western Ghats
- D. Andaman and Nicobar.

Answer: C



Watch Video Solution

67. Mode of controlling pollution in large cities include

- A. lessening the use of insecticides

B. proper disposal of organic wastes, sewage and industrial effluents

C. shifting of factories out of the residential area

D. all of these.

Answer: D



Watch Video Solution

68. Species that are found exclusively in a particular area with high degree of threat of being wiped out because of introduction of exotic species are known as

A. endangered species

B. extinct species

C. endemic species

D. vulnerable species.

Answer: C



Watch Video Solution

69. Rodenticides are

A. chemicals used to kill insects

B. chemicals used to kill rats

C. high quality fertilizers

D. chemicals used to kill persistent weeds.

Answer: B



Watch Video Solution

70. Agent orange is :

A. herbicide

B. fungicide

C. rodenticide

D. pesticide.

Answer: A



[Watch Video Solution](#)

71. Which of the following organelles is found in both a xylem cell and a neuron?

- A. Cell wall
- B. Golgi body
- C. Chloroplast
- D. Centriole

Answer: B



[Watch Video Solution](#)

72. Deforestation takes place

- A. only by human activities
- B. only by natural reasons
- C. afforestation
- D. both (a) and (b).

Answer: D



Watch Video Solution

73. Rani had an uneven plot of land in which water was scarce. What system could she adopt for irrigation?

- A. Canal

B. Sprinkler

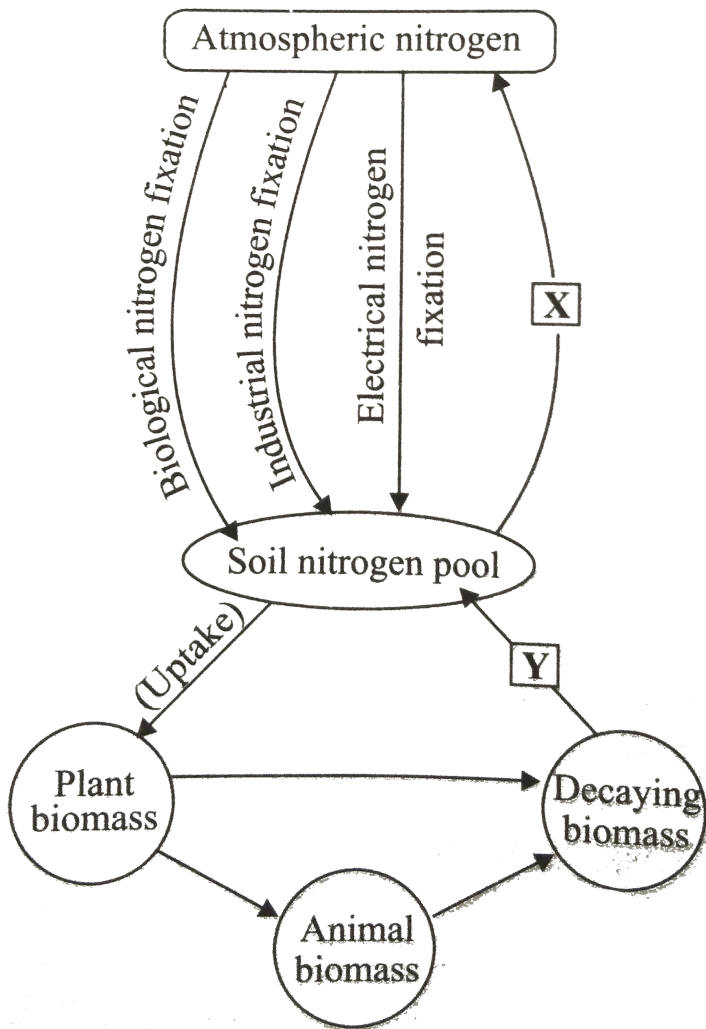
C. Drip

D. Hand pump

Answer: B



Watch Video Solution



74.

Identify the labels X and Y in the given outline of N_2 cycle and select the correct option.

A. X-Denitrification , Y-Ammonification

B. X- N_2 fixation , Y-Ammonification

C. X-Ammonification , Y-Denitrification

D. X-Nitrification , Y-Denitrification

Answer: A



Watch Video Solution

75. Which of the following statement is incorrect about zoos or zoological parks?

A. In 2005, animals are conserved outside their natural homes.

B. The number of zoos/zoological parks is more than 800.

C. Most of them have captive breeding programmes to restore those species which have become extinct in wild.

D. It is an example of in situ conservation.

Answer: D



Watch Video Solution

76. Catalytic converters are used in

A. automobiles

B. wind mills

C. poultry farms

D. diary farms.

Answer: A



Watch Video Solution

77. Viruses are _____ organisms.

A. non-cellular

B. multicellular

C. cellular

D. none of these

Answer: A



Watch Video Solution

78. Select the incorrect statement.

A. The period between conception to birth is called gestation period.

B. Placenta serves as the nutritive, respiratory and excretory organ of the fetus.

C. The young multicellular embryo, formed as a result of cleavage is called blastocyst.

D. The presence of sucrose in the female's genital tract confirms sexual intercourse.

Answer: D



Watch Video Solution

79. Secreted materials from ductless glands are called

A. hormones

B. enzymes

C. plasma

D. none of these.

Answer: A



Watch Video Solution

80. Which one of the following is called pond silk?

A. Spirogyra

B. Fucus

C. Mucor

D. Nostoc

Answer: A



Watch Video Solution

81. What is caused by the harmful effects of certain microorganisms?

- A. Processing and tanning of leather
- B. Food poisoning in humans
- C. Heart disease in humans
- D. Production of antibiotics

Answer: B



Watch Video Solution

82. Ozone hole was first observed over

A. Antarctica

B. Australia

C. Arctic

D. America

Answer: A



Watch Video Solution

83. Caterpillars are the larvae of

A. honeybee

B. butterfly

C. cockroach

D. none of these.

Answer: B



Watch Video Solution

84. World Forest Day is celebrated on

A. 21st June

B. 5th June

C. 21st March

D. 1st December

Answer: C



Watch Video Solution

85. Virus multiplies in

A. culture medium

B. dead tissue

C. living tissue

D. none of these.

Answer: C



Watch Video Solution

86. Chipko movement is concerned with

A. plant conservation

B. Project Tiger

C. animal breeding

D. plant breeding,

Answer: A



Watch Video Solution

87. Which of the following is multicellular filamentary?

A. Spirogyra

B. Chlamydomonas

C. Volvox

D. All of these

Answer: A



Watch Video Solution

88. Agenda 21 is

- A. a product of Earth Summit, which is a blue print for encouraging sustainable development of diversity in 21st century
- B. a list of 21 wild animals to be protected
- C. a list of 21 extinct species
- D. none of these.

Answer: A



Watch Video Solution

89. Which of the following is a viral disease?

A. AIDS

B. Tetanus

C. Whooping cough

D. Cholera

Answer: A



Watch Video Solution

90. Earth Summit which promotes Convention on Biological Diversity was held in 1992 at

A. Kyoto

B. Rio de Janeiro (Brazil)

C. Johannesburg (S. Africa)

D. New Delhi (India).

Answer: B



Watch Video Solution