



BIOLOGY

BOOKS - BETOPPERS

REPRODUCTION IN ANIMALS

Worksheet 1

1. Assertion (A): Reproduction in living organisms essential.

Reason (R): Reproduction is essential for the continuation of species

A. A is correct and R is the correct explanation of A.

B. A is correct and R is not the correct explanation of B

C. A is correct and R is wrong.

D. A is wrong and R is correct.

Answer: A



Watch Video Solution

2. Statement - 1: Asexual reproduction takes place only in unicellular organisms.

Statement - II: Hydra, a multicellular organism multiplies by asexual reproduction.

A. Statement - I is true, Statement - II is false.

B. Statement - I is false, Statement - II is true.

C. Both statements are true.

D. Both statements are false.

Answer: B



Watch Video Solution

3. Assertion (A): 'Human beings are viviparous animals.'

Reason (R): Human beings give birth to young ones.

A. A is correct and R is the explanation of A.

B. A is correct and R is not the correct explanation of B

C. A is correct and R is wrong.

D. A is wrong and R is correct.

Answer: A



View Text Solution

4. Match the following

- | | | | |
|---|----------|---|------------|
| A | Elephant | P | Oviparous |
| B | Insects | Q | Viviparous |
| C | Frog | | |
| D | Tiger | | |



[Watch Video Solution](#)

5. Match the following:

- | | | | |
|---|------------|---|----------------------|
| A | Amoeba | P | Sexual Reproduction |
| B | Tortoise | Q | Asexual Reproduction |
| C | Dog | | |
| D | Paramecium | | |



[Watch Video Solution](#)

6. Statement -I: Birds and Turtles are oviparous animals.

Statement - II: Whale and cow are viviparous animals.

A. Statement -I is true, Statement - II is false.

B. Statement -I is false, Statement - II is true.

C. Both statements are true.

D. Both statements are false.

Answer: C



Watch Video Solution

7. Assertion (A): Crocodile is a oviparous animal.

Reason (R): As it gives birth to young ones, it is a oviparous animals.

A. A is correct and R is the correct explanation of A.

B. A is correct and R is not the correct explanation of B.

C. A is correct and R is wrong.

D. A is wrong and R is correct.

Answer: C



Watch Video Solution

Worksheet 2

1. Spot the errors in the given statements and correct them.

a) The life cycle of butterfly is :

Larva → Egg → Pupa → Adult.

b) Fertilization in insects is internal.



[Watch Video Solution](#)

2. Assertion(A): Larva of mosquito is popularly known as Wiggler

Reason (R): It moves up and down in the water.

A. A is correct and R is the correct explanation of A.

B. A is correct and R is not the correct explanation of B.

C. A is correct and R is wrong.

D. A is wrong and R is correct.

Answer: A



Watch Video Solution

3. Statement -I: Larva of mosquito goes deep into the water to breathe and take dissolved oxygen in water.

Statement -II: {Pupa in mosquito is seen as if suspended in water.

A. Statement -I is true, Statement - II is false.

B. Statement -I is false, Statement - II is true.

C. Both statements are true.

D. Both statements are false.

Answer: B



Watch Video Solution

4. Fill in the following blanks.

Larva of mosquito, is popularly called _____.



Watch Video Solution

5. Fill in the following blanks.

The stage between larva and adult in the life cycle of silk worm is _____.



[Watch Video Solution](#)

6. Say True or False

The female frog is fatter than the male.



[Watch Video Solution](#)

7. Say True or False

For reproduction, the male and female frog come together late in winter season.



[Watch Video Solution](#)

8. Say True or False

Fertilization in Frog is internal.



[Watch Video Solution](#)

9. Say True or False

The whole of zygotes of the frog in a jelly is called Spawn.



[Watch Video Solution](#)

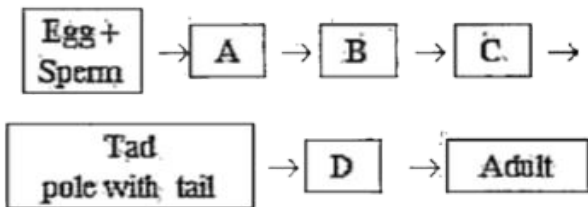
10. A fuses with egg and B is its product. C is the whole mass of zygotes enclosed in thick jelly of frog and D is the intermediate stage between aquatic and land habitat in frog's life cycle. Identify A, B, C and D.





Watch Video Solution

11. Identify A, B, C, D in the life cycle of a frog.



Watch Video Solution

12. Assertion (A): Tadpole stage of frog has both gills and fins.

Reason (R): Gills help in breathing and fins help in swimming.

A. A is correct and R is the correct explanation of A.

B. A is correct and R is not the correct explanation of B.

C. A is correct and R is wrong.

D. A is wrong and R is correct.

Answer: A



Watch Video Solution

13. Match the following:

A) Frog

B) Fish

C) Insects

D) Human being

P) External Fertilization

Q) Internal Fertilization



Watch Video Solution

14. Match the following:

A) Fins

B) Lungs

C) Gills

D) Four Limbs

P) Tadpole

Q) Adult Frog



Watch Video Solution

15. Assertion (A): Cloning is induced (artificial) asexual reproduction.

Reason (R): Cloning is the forming of a baby from a body cell.

A. A is correct and R is the correct explanation of A.

B. A is correct and R is not the correct explanation of B.

C. A is correct and R is wrong.

D. A is wrong and R is correct.

Answer: A



Watch Video Solution

16. Statement -I: The baby thus born was found to be exactly similar to the sheep 'B'and it is termed a 'clone.

Statement - II: The clone had no similarities with the sheep 'A' in whose wombit developed.

A. Statement - I is true, Statement - II is false.

B. Statement - I is false, Statement - II is true.

C. Both statements are true.

D. Both statements are false.

Answer: C



Watch Video Solution

Competitive Worksheet

1. Budding is a type of asexual reproduction found in very few animals such as, coelenterates and ascidians. In budding, the new organism is formed by the

A. breaking of the parent body into many parts

B. formation of a bud on the body of the parent

C. breaking of the parent body and the
release of spore

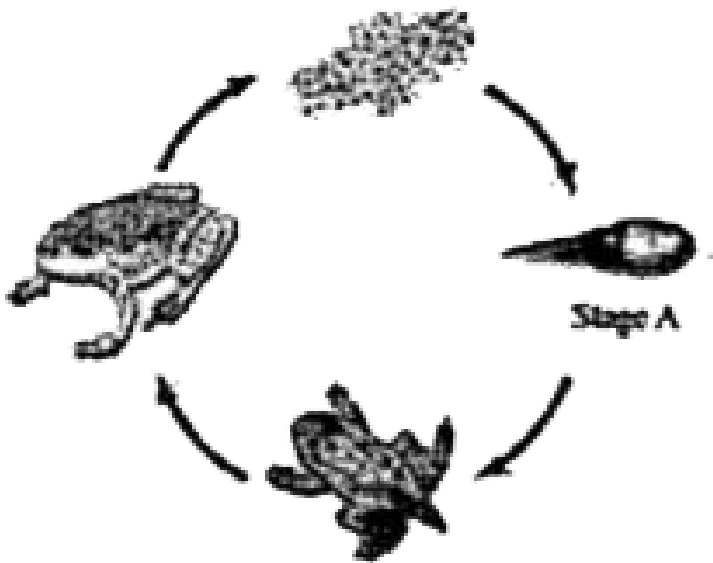
D. formation of a bud on the spores
released by the parent

Answer: B



Watch Video Solution

2. The given diagram shows the life cycle of a
frog.



Stage A in the life cycle of a frog is known as

A. larva

B. pupa

C. tadpole

D. nymph

Answer: C



Watch Video Solution

3. The main components of the reproductive system are the

A. testis and the kidney

B. liver and the kidney

C. testis and the ovary

D. ovary and the liver

Answer: C



View Text Solution

4. Sexual reproduction occurs in most multicellular organisms. It is advantageous because it

A. results in the formation of offsprings that are not identical to the parents

B. results in the formation of several offsprings

C. requires lesser investment of energy

D. requires lesser amount of time

Answer: A



Watch Video Solution

5. During fertilization, the

A. male and female gametes fuse

B. male gamete divides into two cells

C. female gamete divides into two cells

D. female and male gametes are produced

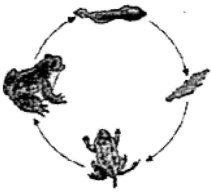
Answer: A

 [View Text Solution](#)

6. Frogs undergo complete metamorphosis.

Which figure represents the life cycle of frogs?





C.



D.

Answer: A



Watch Video Solution

7. Butterflies undergo complete metamorphosis. Which figure represents the life cycle of butterflies?

A.



B.



C.



D.



Answer: A



Watch Video Solution

8. Daniel wants to depict the stages of complete metamorphosis in their order of occurrence. Which arrow diagram represents the stages of complete metamorphosis in their order of occurrence?

A. Egg \rightarrow larva \rightarrow pupa \rightarrow adult

B. Egg \rightarrow pupa \rightarrow larva \rightarrow adult

C. Larva \rightarrow egg \rightarrow pupa \rightarrow adult

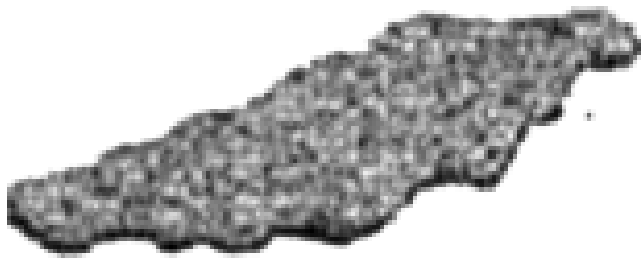
D. Pupa \rightarrow egg \rightarrow larva \rightarrow adult

Answer: A





9. The given figure shows the eggs of a frog.



In the stage that follows the one shown in the given figure, the egg matures and looks like



A.



B.



C.



D.

Answer: B



Watch Video Solution

10. In human females, fertilization takes place
in the

A. Ovary

B. fallopian tube

C. Uterus

D. vagina

Answer: B



View Text Solution

11. In human females, egg cells are produced in the?

A. vagina

B. clitoris

C. uterus

D. ovary

Answer: D



View Text Solution

12. Human beings give birth to live young babies. They need to be nourished externally before they grow into adults.

The mode of reproduction in humans is called

A. oviparous

B. viviparous

C. ovoviviparous

D. ovooviparous

Answer: B



Watch Video Solution

13. The implantation of blastocyst occurs in

A. ovaries

B. cervix

C. uterus

D. fallopian tubes

Answer: C



View Text Solution

14. How many eggs do ovaries produce in one cycle under normal conditions?

A. One

B. Two

C. Three

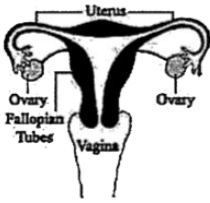
D. Four

Answer: A

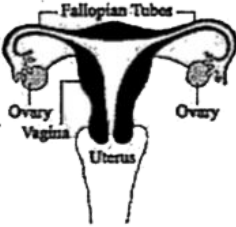


View Text Solution

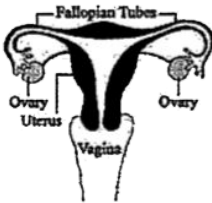
15. The reproductive system is correctly labelled in which diagram?



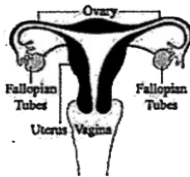
A.



B.



C.



D.

Answer: C



Watch Video Solution

