



BIOLOGY

BOOKS - ICSE

REPRODUCTION IN HUMANS

Review Questions Multiple Choice Questions

1. The testes are located within the :

A. Penis

B. Scrotum

C. Ureter

D. Urinary bladder

Answer:



Watch Video Solution

2. Amoeba most commonly reproduces by :

A. Budding

B. Regeneration

C. Binary fission

D. Multiple fission

Answer:



Watch Video Solution

3. Identify the stage which is formed after the fertilisation of the egg by the sperm ?

A. Ovule

B. Foetus

C. Embryo

D. Zygote

Answer:



Watch Video Solution

4. Internally, the uterus opens into :

A. Urethra

B. Vagina

C. Oviduct

D. Vulva

Answer:



Watch Video Solution

Review Questions Short Answer Questions

1. Distinguish between the following pairs of terms:

Egg and sperm



Watch Video Solution

2. Distinguish between the following pairs of terms:

Sexual reproduction and asexual reproduction

.....



[Watch Video Solution](#)

3. Distinguish between the following pairs of terms:

Budding and regeneration :



 [Watch Video Solution](#)

4. Define the following terms:

Fertilization :



[Watch Video Solution](#)

5. Define the following terms:

Implantation :



[Watch Video Solution](#)

6. State the reason why testes lie outside the abdomen in a scrotum?



Watch Video Solution

7. Why is it important that a very large number of sperms should be present in the semen?



Watch Video Solution

8. List the structures, in their correct sequence, through which the sperms must pass from the time they are produced in the testes to the time they leave the urethra.



[Watch Video Solution](#)

9. State the functions of the following:

Ovary :



[Watch Video Solution](#)

10. State the functions of the following:

Testes :



Watch Video Solution

11. State the functions of the following:

Fallopian tubes ...



Watch Video Solution

12. State the functions of the following:

Seminal vesicles



Watch Video Solution

13. What are the functions of the following:

Uterus



Watch Video Solution

14. Given here is a section of the female reproductive system in humans.

a. Name the parts labelled 1 to 4

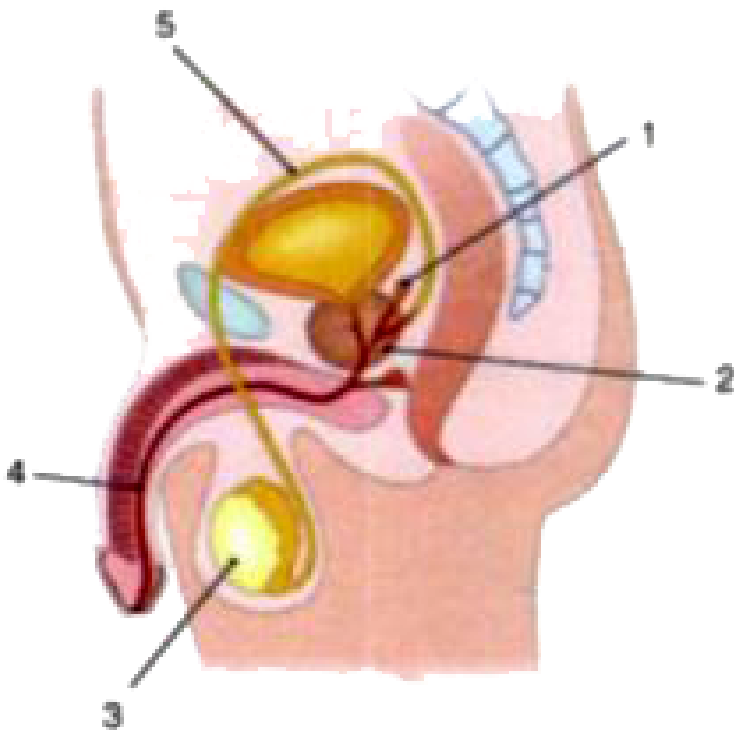


b. Name the part where fertilisation occurs in the female reproductive system.



[Watch Video Solution](#)

15. Given alongside is a diagram of the male reproductive system in humans. Label the parts indicated by numbers 1 to 5, and state their functions.





[Watch Video Solution](#)

Review Questions Long Answer Questions

1. How does a single celled fertilized egg grow into an adult human body ?



[Watch Video Solution](#)

2. Describe the human female reproductive system with a labelled diagram .



Watch Video Solution