



BIOLOGY

BOOKS - ICSE

THE CIRCULATORY SYSTEM

Review Questions Multiple Choice Questions

1. The vein which brings oxygenated blood to the heart from the lungs :

A. Renal vein

B. Superior vena cava

C. Pulmonary vein

D. Coronary vein

Answer:



Watch Video Solution

2. The path which the blood flows through during pulmonary circulation is :

A. RA → RV → Pulmonary arteries →

Lungs → Pulmonary veins → LA

B. LA → LV → Pulmonary veins →

Lungs → Pulmonary arteries → RA

C. LA → LV → Aorta → Body → Vena

Cavae → RA

D. RA → RV → Vena Cavae → Body

→ Aorta → LA

Answer:



Watch Video Solution

Review Questions Short Answer Questions

1. In which organ of our body does blood get oxygenated ?



[Watch Video Solution](#)

2. Which side of the heart (left or right) contains oxygenated blood ?



[Watch Video Solution](#)

3. Name the following:

Three kinds of blood vessels.



Watch Video Solution

4. Name the following:

Two types of blood circulation in the human body.....



Watch Video Solution

5. Name the following:

The membranous structure which divides the heart into a right and a left portion.....



[Watch Video Solution](#)

6. Name the following:

The structure responsible for starting electrical impulses that cause the heart to contract and relax in order to keep pumping blood.....



[Watch Video Solution](#)

7. Name the following:

The scientist who identified different types of blood groups.....



Watch Video Solution

8. Define the terms :

Circulatory system :



Watch Video Solution

9. Define the terms :

Blood :.....



Watch Video Solution

10. Define the terms :

Lymph



Watch Video Solution

11. Define the terms :

Artificial pacemaker.....



Watch Video Solution

**Review Questions Long Answer Questions Write
The Answers In Your Notebook**

**1. Differentiate between the following pairs on
the basis of what is indicated within the
brackets:**

Pulmonary artery and pulmonary vein (kind of blood)



[Watch Video Solution](#)

2. Differentiate between the following pairs on the basis of what is indicated within the brackets:

Artery and vein (direction of blood flow)



[Watch Video Solution](#)

3. Differentiate between the following pairs on the basis of what is indicated within the brackets:

Closed and open vascular system (definition)



Watch Video Solution

4. Differentiate between the following pairs on the basis of what is indicated within the brackets:

Bicuspid and tricuspid valve (location)





[Watch Video Solution](#)

5. Differentiate between the following pairs on the basis of what is indicated within the brackets:

Blood and lymph (composition)



[Watch Video Solution](#)

6. Write important role/roles of each :

Pericardial fluid



[Watch Video Solution](#)

7. Write important role/roles of each :

Aorta



Watch Video Solution

8. Write important role/roles of each :

Vena cavae



Watch Video Solution

9. Name any four heart-related conditions that occur commonly in humans. Briefly explain the cause and symptoms of each of them.



Watch Video Solution

10. Give the functions of lymph.



Watch Video Solution

11. Explain :

Universal donor



Watch Video Solution

12. Explain :

Universal recipient



Watch Video Solution

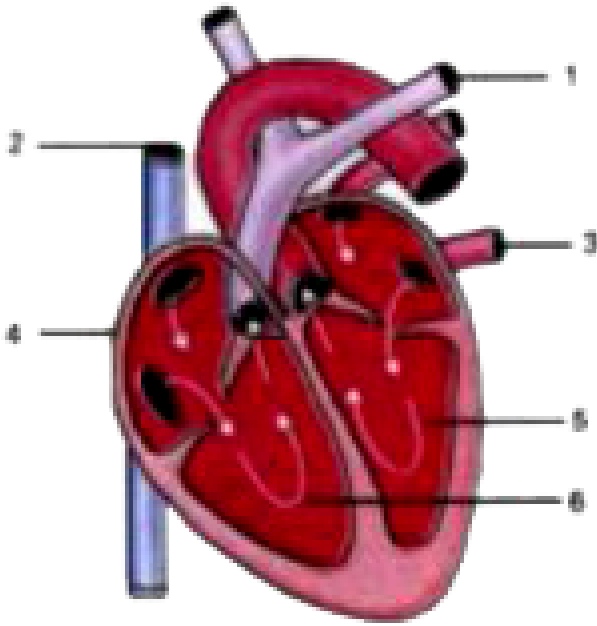
13. During surgical operations or during accidents, the patient may be given blood from outside to save his life. What is the technical name of this process ? Briefly explain the precautions to be observed and taken in this process.



Watch Video Solution

14. Given alongside is a diagram of the human heart showing its internal structure. Label the

parts marked 1 to 6, and answer the following questions.

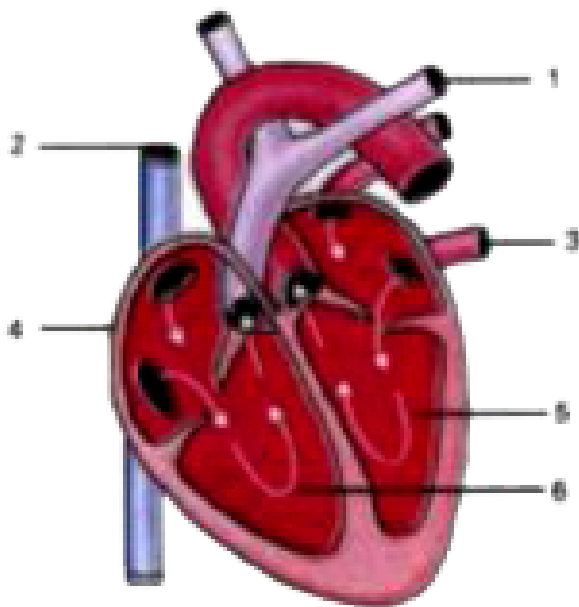


Which type of blood is carried by the blood vessel marked 2 ?



Watch Video Solution

15. Given alongside is a diagram of the human heart showing its internal structure. Label the parts marked 1 to 6, and answer the following questions.

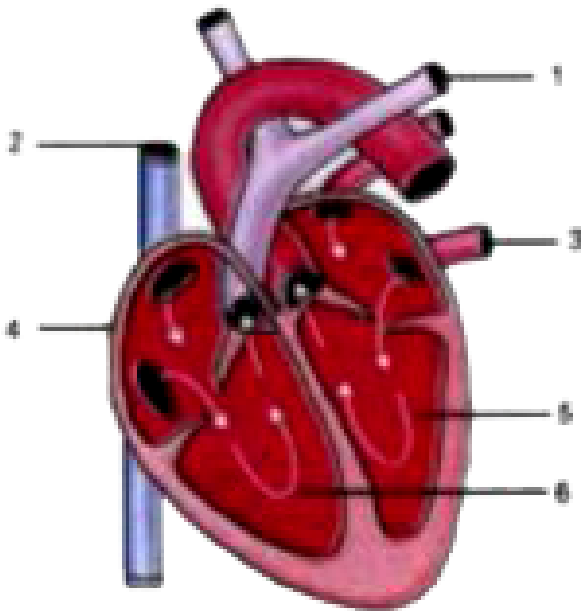


Name the main artery which takes the blood from heart to different parts of the body.



Watch Video Solution

16. Given alongside is a diagram of the human heart showing its internal structure. Label the parts marked 1 to 6, and answer the following questions.



Which chamber of the heart receives deoxygenated blood from the body?



Watch Video Solution