



BIOLOGY

BOOKS - S CHAND BIOLOGY (HINGLISH)

MODEL TEST PAPER 4

Section A

1. Cell theory was first given by, and
.....



[Watch Video Solution](#)

2. How many chambers are present in the heart of : (i) Fishes, (ii) Frog ?



[Watch Video Solution](#)

3. Write one main function of

(a) Apical meristem (b) Lateral meristem.



[Watch Video Solution](#)

4. Differentiate between prokaryotic and eukaryotic cells.



Watch Video Solution

5. What are the advantages of composite fish culture?



Watch Video Solution

6. Explain the general ways of preventing infection.



[Watch Video Solution](#)

7. Give an account of some important viral diseases of human beings.



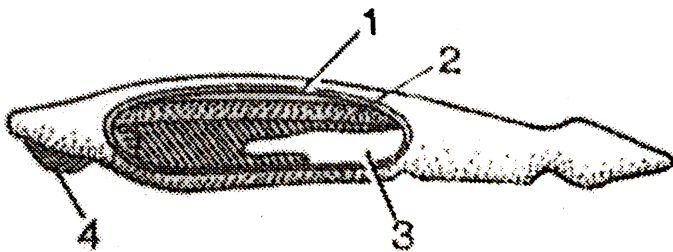
[Watch Video Solution](#)

1. (a) Identify the organism in the following figure

(b) Label the parts number 1 to 4

(c) Name the phylum in which notochord is present

(d) Name the subphylum in which notochord is present throughout life



Watch Video Solution

