



PHYSICS

BOOKS - S CHAND PHYSICS (HINGLISH)

MODEL TEST PAPER 3

Section A

1. State an important characteristic of uniform circular motion. Name the force which brings

about uniform circular motion.



Watch Video Solution

2. To take the boat away from the bank of a river, the boatman pushes the bank with an oar. Why?



Watch Video Solution

3. Does Newton's third law of motion apply to gravitational force?



Watch Video Solution

4. Find the momentum of a body of mass 100 g having a kinetic energy of 20 J.



Watch Video Solution

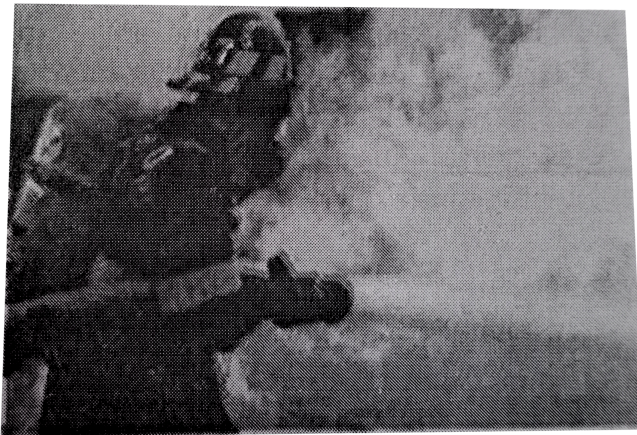
5. Can two astronauts talk on the surface of moon as they do on earth? Why?



Watch Video Solution

6. (a) State Newton's third law of motion and give two examples to illustrate the law.

(b) Explain why, when a fireman directs a powerful stream of water on a fire from a hose pipe, the hose pipe tends to go backward.



Watch Video Solution

7. What do you understand by the term acceleration due to gravity of earth ?

(c) State the SI unit of acceleration due to gravity .



Watch Video Solution

Section B

1. A stone and the earth attract each other with an equal and opposite force. Why then we see only the stone falling towards the earth

but but not the earth rising towards the stone
?



Watch Video Solution

2. How does the kinetic energy of a moving body depend on its (i) speed, and (ii) mass ?



Watch Video Solution