



BIOLOGY

BOOKS - ICSE

DIGESTIVE SYSTEM

Topic 1 1 Mark Questions

1. Pylorus is an opening from:

A. intestine into rectum

B. oesophagus into stomach

C. stomach into intestine

D. mouth cavity into oesophagus

Answer: C



Watch Video Solution

2. The gastric juice contains

A. amylopsin and pepsin

B. pepsin and trypsin

C. HCl and pepsin

D. trypsin and HCl

Answer: C



Watch Video Solution

3. Name the following

The formula which represents the number and kind of teeth in man.



Watch Video Solution

4. What is chyme?



[Watch Video Solution](#)

5. Why amylase is not able to function in the stomach ?



[Watch Video Solution](#)

6. Differentiate between the: Parotid gland and Sublingual gland on the basis of their

location.



[Watch Video Solution](#)

Topic 1 2 Marks Questions

1. Explain the Digestion



[Watch Video Solution](#)

2. Explain the Peristalsis



[Watch Video Solution](#)

3. Name the following:

Mammalian teeth with different shapes.



Watch Video Solution

4. Name the following:

The expulsion of undigested remains of food from the alimentary canal.



Watch Video Solution

5. Give the technical names for the following types of teeth in humans :

The two temporary grinding teeth.



[Watch Video Solution](#)

6. Give the technical names for the following types of teeth in humans :

The three last grinders.



[Watch Video Solution](#)

7. Give the technical names for the following types of teeth in humans :

The broad sharp cutting teeth.



[Watch Video Solution](#)

8. Give the technical names for the following types of teeth in humans :

The pointed tooth for holding and tearing.



[Watch Video Solution](#)

9. Mention reflexes which occur when a person
Chews food



Watch Video Solution

10. Mention reflexes which occur when a
person
Swallows food



Watch Video Solution

11. How is through chewing of food helpful in digestion?



Watch Video Solution

Topic 1 3 Marks Questions

1. Mention the exact location : Stomach



Watch Video Solution

2. Mention the exact location : Tongue



[Watch Video Solution](#)

3. Mention the exact location : Fundus



[Watch Video Solution](#)

4. Given below are sets of five terms each.

Rewrite the terms in a logical sequence

beginning with the word that is underlined:

Rectum, Pharynx, oesophagus, Duodenum,
Stomach



[Watch Video Solution](#)

5. Given below are sets of five terms each.
Rewrite the terms in a logical sequence
beginning with the word that is underlined:

Colon, Buccal cavity, Pancreas, Pharynx,
Stomach



[Watch Video Solution](#)

6. Given below are sets of five terms each. Rewrite the terms in a logical sequence beginning with the word that is underlined:

Oesophagus, Pharynx, Stomach, Large intestine, Small intestine



[Watch Video Solution](#)

7. Give an example for each of the following:

A gastric enzyme



[Watch Video Solution](#)

8. Give an example for each of the following:

Salivary gland



Watch Video Solution

9. Give an example for each of the following:

A salivary enzyme



Watch Video Solution

Topic 1 5 Marks Questions

1. Fill in the blanks : (1) $\xrightarrow{\text{salivary amylase}}$ (2)

.....



Watch Video Solution

2. Fill in the blanks : (1) $\xrightarrow{\text{Pepsin}}$ (2)



Watch Video Solution

3. Fill in the blanks : (1) $\xrightarrow{\text{HCl}}$ (2)



Watch Video Solution

4. Fill in the blanks : (1)..... $\xrightarrow{\text{Amylopsin}}$ (2)



Watch Video Solution

5. Fill in the blanks : (1)..... $\xrightarrow{\text{Ptyalin}}$ (2)



Watch Video Solution

6. Study the diagram and answer the questions that follow :

Label the parts 1 - 4



Watch Video Solution

7. Study the diagram and answer the questions that follow :

Give the function of parts labelled 5 & 6.



Watch Video Solution

8. Study the diagram and answer the questions that follow :



Name the part exposed above the part labelled .3..



[View Text Solution](#)

9. Study the diagram and answer the questions that follow :

Name the hard substance covering the crown of the tooth.



[Watch Video Solution](#)

10. Study the diagram and answer the questions that follow :

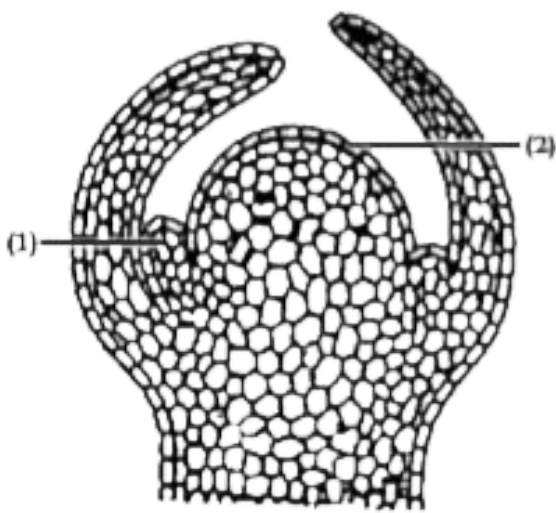


Name the bone-like structure that the root in position.



[View Text Solution](#)

11. Study the diagram given below and answer the questions that follow :

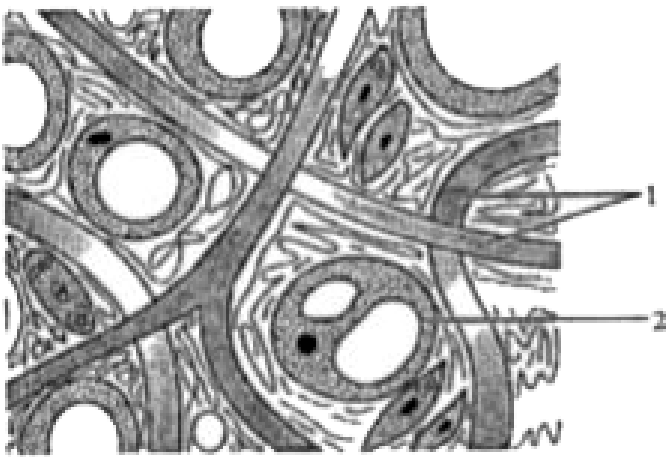


Identify the above structure and mention its location in a plant.



[Watch Video Solution](#)

12. Study the diagram and answer the questions that follow :



Label the parts numbered as 1 and 2.



[Watch Video Solution](#)

13. Study the diagram and answer the questions that follow :



Name the vestigial teeth found in this structure.



View Text Solution

14. Study the diagram and answer the questions that follow :

Write the dental formula of human.



Watch Video Solution

15. Study the diagram and answer the questions that follow :

Draw a neat, labelled diagram of a human tooth



Watch Video Solution

16. Draw a neat and labelled diagram of a tooth.



Watch Video Solution

17. Based on the diagram drawn above in (i), give a suitable term for each of the following descriptions:

1. Exposed portion of tooth above the gums.
2. Hardest substance that covers the crown of the tooth
3. It carries the nerve fibre, blood vessels, and sensory cells.
4. Hard substance around the root that holds tooth in the socket in the jaw.
5. The narrow portion of the gum line.
6. A type of tooth used for tearing and

piercing

7. Bicuspid tooth with one or two roots.



[Watch Video Solution](#)

18. Given below are different types of teeth,
Study the same and answer the questions
given below :

Name the teeth, labelled as A, B, C and D.



[Watch Video Solution](#)

19. Given below are different types of teeth,
Study the same and answer the questions
given below :



State the different parts found in all these
structures.

 [View Text Solution](#)

20. Given below are different types of teeth,
Study the same and answer the questions

given below :



State the hardest structure found in these structures.



[View Text Solution](#)

21. Given below are different types of teeth, Study the same and answer the questions given below :

Explain the specific function of each of these structures.



[Watch Video Solution](#)

22. The picture given below is a part of alimentary canal. Answer the questions that follows:

Identify the organ.



[Watch Video Solution](#)

23. The picture given below is a part of alimentary canal. Answer the questions that

follows:

Name the digestive juice secreted by it.



[Watch Video Solution](#)

24. The picture given below is a part of alimentary canal. Answer the questions that follows:

What is the significance of hydrochloric acid in the digestive juice?



[Watch Video Solution](#)

25. The picture given below is a part of alimentary canal. Answer the questions that follows:

Mention the enzyme in the digestive juice.

What is its action on food?



[Watch Video Solution](#)

Topic 2 1 Mark Questions

1. The digestive juice which does not contain any enzyme:

A. Saliva

B. Gastric juice

C. Bile

D. Pancreatic juice

Answer: C



Watch Video Solution

2. Enzymes present in pancreatic juice are:

A. Pepsin and Rennin

B. Maltase and Invertase

C. Trypsin and Maltase

D. Amylopsin and Trypsin

Answer: D



Watch Video Solution

3. The water from the digested food is mainly absorbed by:

A. Rectum

B. Stomach

C. Colon

D. Duodenum

Answer: C



Watch Video Solution

4. (A) is the largest digestive gland in the human body and secretes (B)....



Watch Video Solution

5. What happens if bile is not present in sufficient quantity in the body?



[Watch Video Solution](#)

6. Define Assimilation.



[Watch Video Solution](#)

Topic 2 2 Mark Questions

1. Given below are sets of five terms each. Rewrite the terms in a logical sequence beginning with the word that is underlined:

Caecum, Rectum , Colon, Jejenum, Ileum



[Watch Video Solution](#)

2. Given below are sets of five terms each. Rewrite the terms in a logical sequence beginning with the word that is underlined:

Ileum, Rectum, Anus, Caecum, Jejunum





[Watch Video Solution](#)

3. Give an example for an intestinal enzyme



[Watch Video Solution](#)

4. Give an example for a digestive gland



[Watch Video Solution](#)

5. Differentiate between the following pairs on the basis of what is given in the brackets:

Anabolism and Catabolism (Mechanism)



[Watch Video Solution](#)

6. Differentiate between the following pairs on the basis of what is given in the brackets:

Small intestine and Large intestine (Function)



[Watch Video Solution](#)

7. Mention the constituent of food if the end result of the test shows :

Blue green to deep red with appearance of precipitate when added to Fehling solution.



[Watch Video Solution](#)

8. Mention the constituent of food if the end result of the test shows :

White to yellow and yellow to orange colour, after adding ammonium hydroxide.



[Watch Video Solution](#)

9. Mention the constituent of food if the end result of the test shows :

Turning blue-black after adding iodine solution.



Watch Video Solution

10. Mention the constituent of food if the end result of the test shows :

Ash that does not burn after continued heating



[Watch Video Solution](#)

11. There are finger like projection found in the inner lining of ileum. Give a suitable reason.



[Watch Video Solution](#)

12. What is the function of rectum?



[Watch Video Solution](#)

13. Mention two ways in which the ileum of a mammal is adapted for the absorption of digested food.



Watch Video Solution

Topic 2 3 Marks Questions

1. Give appropriate biological / technical terms for the following:

An enzyme released in inactive form and activated by hydrochloric acid.



Watch Video Solution

2. Give appropriate biological / technical terms for the following:

An enzyme which digests fats in ileum.



Watch Video Solution

3. Give appropriate biological / technical terms for the following:

An enzyme which digests protein in duodenum



Watch Video Solution

4. Choose the ODD one out from the following terms given and name the CATEGORY to which the others belong :

Stomach, Oesophagus, Trachea, Colon, Small intestine



[Watch Video Solution](#)

5. Choose the ODD one out from the following terms given and name the CATEGORY to which the others belong :

Protease, Lipase, Pectinase, Maltose, Amylase



[Watch Video Solution](#)

6. Why is the small intestine the most important organ of the digestive system?



Watch Video Solution

7. Fill in the blanks

(1) Enterokinase (2)



Watch Video Solution

8. Fill in the blanks

(1) Sucrase (2) +



Watch Video Solution

9. Fill in the blanks

(1) Trypsin (2)



Watch Video Solution

10. Fill in the blanks

(1) Lactase (2) +



[Watch Video Solution](#)

11. Fill in the blanks

(1) Protease (2) +



[Watch Video Solution](#)

12. Fill in the blanks

(1) Steapsin (2) +



[Watch Video Solution](#)

Topic 2 5 Marks Questions

1. Mention the exact location : Pancreas



[Watch Video Solution](#)

2. Mention the exact location : Duodenum



[Watch Video Solution](#)

3. Mention the exact location : Caecum



[Watch Video Solution](#)

4. Mention the exact location : Anus



[Watch Video Solution](#)

5. Mention the exact location : Liver



Watch Video Solution

6. Complete the following paragraph by filling in the blanks (i) to (x) with appropriate words:

(1) is the upper U-shaped tube of the small intestine. It gets bile juice from (ii)..... and pancreatic juice from pancreas through a common bile duct. Bile makes the medium (iii) and (iv) fat. Pancreatic juice

contains pancreatic (v) Duodenum
leads into a coiled tube called (vi) (vii)
..... is the highly coiled part of intestine
and opens into the (viii) In jejunum
and ileum, the partially digested food gets
mixed with intestinal juice called (ix)
The inner lining of ileum has a number of
finger like projections called (x), which
increases the surface area for absorption.



Watch Video Solution

7. (i) Draw a neat and labelled diagram of the alimentary canal.

(ii) Based on the diagram drawn above in (i), give a suitable term for each of the following descriptions :

1. The storage organ for bile juice.
2. A large J-shaped elastic bag.
3. Part of alimentary canal where complete digestion of food takes place. Finger-like minute projection that increases the surface of the small intestine.
5. A long muscular tube that leads from the

pharynx till the stomach.

6. Part of both digestive and respiratory system.

7. A long region that divided into duodenum, jejunum, and ileum



[Watch Video Solution](#)

8. Study the diagram given below and answer the questions that follow:

Name the structure shown and label its parts 1 and 2.



[Watch Video Solution](#)

9. Study the diagram given below and answer the questions that follow:



Name the enzymes present in part 1.



[View Text Solution](#)

10. Study the diagram given below and answer the questions that follow:



State the difference in functions of part labelled as, .2. and .3..



View Text Solution

11. Study the diagram given below and answer the questions that follow:

Name the digestive gland that is visible in this diagram.



Watch Video Solution

12. Study the diagram given below and answer the questions that follow:

State how part.4. helps in digestion.



Watch Video Solution

13. Given below is a diagram depicting a physiological process in mammals. Study the same and answer the following questions :

(i) Name the process occurring in the diagram.

(ii) Explain the process mentioned in part (i).





[Watch Video Solution](#)

14. Given below is a diagram depicting a physiological process in mammals.

Study the same and answer the following questions :

Label the part .X. and .Y..



[Watch Video Solution](#)

15. Given below is a diagram depicting a physiological process in mammals.



Study the same and answer the following questions :

What would happen if this process occurs in the reverse direction ?



[View Text Solution](#)

16. Given below is a diagram depicting a physiological process in mammals.



Study the same and answer the following

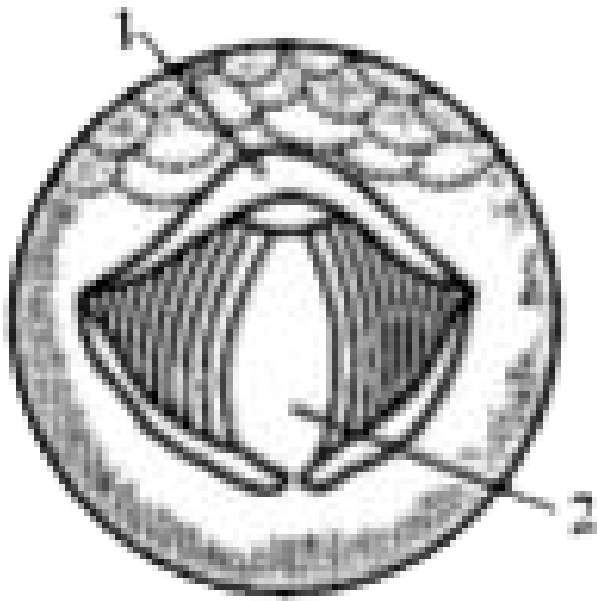
questions :

Define the part .Y..



[View Text Solution](#)

17. Study the diagram given below and answer the questions that follow:



Name the structure shown in the diagram.

State in which part of the body it is present.



Watch Video Solution

18. Study the diagram given below and answer the questions that follow :

How this structure is helpful in digestion ?



Watch Video Solution

19. Study the diagram given below and answer the questions that follow :

Label the parts numbered as .1. and .2..



Watch Video Solution

20. Study the diagram given below and answer the questions that follow :

Name the lymph vessel present in part labelled as .1..



Watch Video Solution

21. Study the diagram given below and answer the questions that follow :

Name the enzymes present in intestinal juice.



Watch Video Solution

22. Study the diagram given below and answer the questions that follow :

Name the structure shown in the diagram. It is a part of which system of the human body?



Watch Video Solution

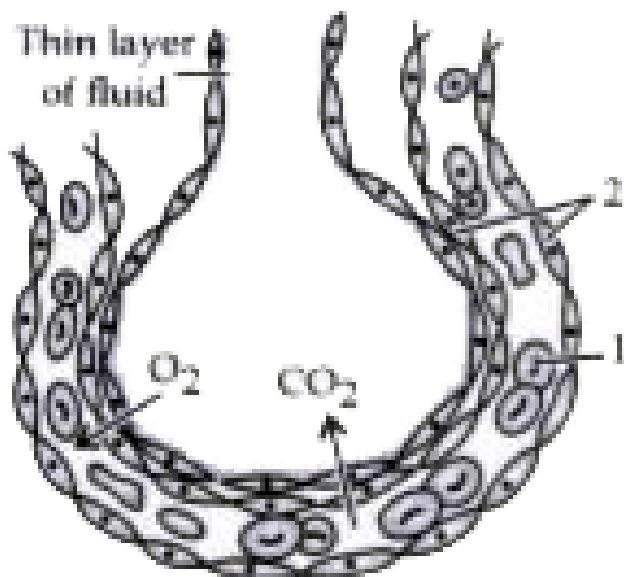
23. Study the diagram given below and answer the questions that follow :

Write the basic function of this structure.



Watch Video Solution

24. Study the diagram given below and answer the questions that follow :



Label the parts numbered as 1 and 2.



[Watch Video Solution](#)

25. Study the diagram given below and answer the questions that follow :

Name the finger-like projections found in the inner wall of the ileum.



Watch Video Solution

26. Study the diagram given below and answer the questions that follow :

How is this structure helpful in digesting fat ?



Watch Video Solution

27. Study the diagram given below and answer the questions that follow :

State its location in the small intestine. State in which part of small intestine, it is present.



Watch Video Solution

28. Study the diagram given below and answer the questions that follow :

How is this structure well adapted for absorption of digested food ?



 [Watch Video Solution](#)

29. Study the diagram given below and answer the questions that follow :

Label the parts numbered 1 and 2.



[Watch Video Solution](#)

30. Study the diagram given below and answer the questions that follow :

Name the lymph vessel present inside the structure.



[Watch Video Solution](#)

31. Study the diagram given below and answer the questions that follow :

Name the digestive juice secreted by the liver.

What are the two pigments present in it?



[Watch Video Solution](#)

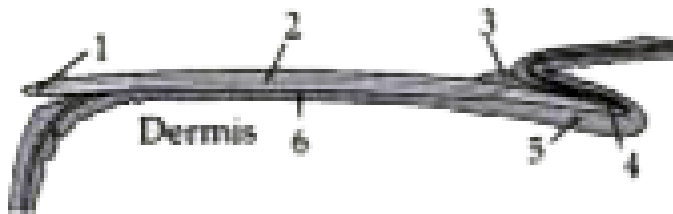
32. Study the diagram given below and answer the questions that follow :

Label the parts 1 - 4.



[Watch Video Solution](#)

33. Study the diagram and answer the questions that follow :



Explain the function of parts 5 and 6.



[Watch Video Solution](#)

34. Study the diagram given below and answer the questions that follow :

Name two enzymes secreted from the part labelled as .3..



Watch Video Solution

35. Study the diagram given below and answer the questions that follow :

Name the pigment that gives colour to the skin.





[Watch Video Solution](#)

36. Study the diagram given below and answer the questions that follow :

What is emulsification?



[Watch Video Solution](#)

37. Study the diagram given below and answer the questions that follow :

Label the parts 1 - 4.



[Watch Video Solution](#)

38. Study the diagram given below and answer the questions that follow :



Explain the function of part labelled as .1. ?

 [View Text Solution](#)

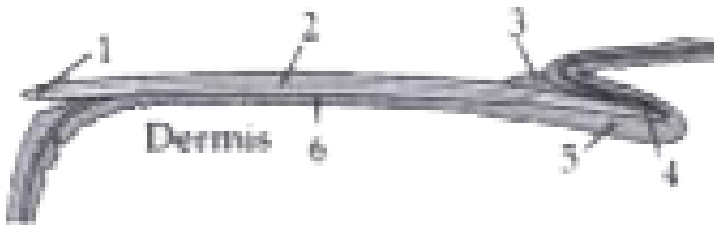
39. Study the diagram given below and answer the questions that follow :



How is intestinal juice secreted into the intestine?

[View Text Solution](#)

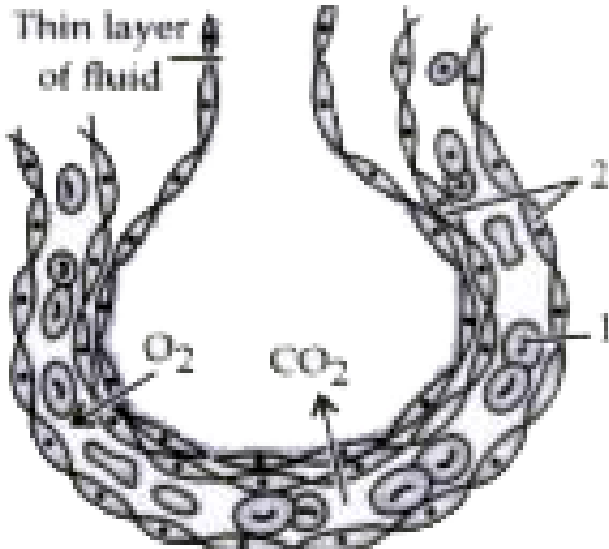
40. Study the diagram and answer the questions that follow :



How does nail grow?

[Watch Video Solution](#)

41. Study the diagram given below and answer the questions that follow :



Name the fluid present inside the capillary.



[Watch Video Solution](#)

Review Questions Multiple Choice Type

1. Pylorus is an opening from

A. oesophagus into stomach

B. mouth cavity into oesophagus

C. stomach into intestine

D. intestine into rectum

Answer:



Watch Video Solution

2. Gastric juice contains

A. HCl and pepsin

B. pepsin and trypsin

C. trypsin and HCl

D. amylopsin and pepsin

Answer:



Watch Video Solution

3. The water from the digested food is mainly absorbed by:

A. stomach

B. duodenum

C. colon

D. rectum

Answer:



Watch Video Solution

4. Which one of the following pairs of types of teeth perform one common function as stated against it?

- A. Incisors, canines Holding
- B. Canines, premolars Tearing
- C. Premolars, molars Grinding
- D. Molars, incisors Tearing

Answer:



Watch Video Solution

Review Questions Very Short Answer Type

1. Give the dental formula of human beings.



[Watch Video Solution](#)

2. Mention two reflexes which occur when a person chews and swallows food.



[Watch Video Solution](#)

3. Consider the following two statements A & B and select the statements from (i)-(iv) that hold true.

A. Small intestine is shorter than large intestine.

B. Small intestine is wider than large intestine.

A. Both the statements are correct.

B. Both the statements are wrong,

C. Statement A is correct, B is wrong

D. Statement B is correct, A is wrong.

Answer:



Watch Video Solution

Review Questions Short Answer Type

1. What is digestion ? Why do only animals require a digestive system?



Watch Video Solution

2. What are the end-products of the digestion of starch, proteins and fats respectively?



[Watch Video Solution](#)

3. Why is there no enzyme to digest vitamin ?



[Watch Video Solution](#)

4. How is through chewing of food helpful in digestion?



Watch Video Solution

5. What is the function of rectum?



Watch Video Solution

6. What is roughage? Give two examples.



Watch Video Solution

7. Mention two ways in which the ileum of a mammal is adapted for the absorption of digested food.



[Watch Video Solution](#)

8. The stomach secretes gastric juice, which contains hydrochloric acid. What is its function ?



[Watch Video Solution](#)

Review Questions Long Answer Type

1. Prepare a possible vegetarian menu for your dinner which would provide all the necessary nutrients.



[Watch Video Solution](#)

2. What are the main characteristics of an enzyme ?



[Watch Video Solution](#)

3. Why is the small intestine the most important organ of the digestive system?



Watch Video Solution

4. How is the liver an important organ in our body ?



Watch Video Solution

5. Define the following terms:

Peristalsis



Watch Video Solution

6. Define the following terms:

Omnivore



Watch Video Solution

7. Define the following terms:

Pylorus



Watch Video Solution

8. Define the following terms:

Kilocalorie



Watch Video Solution

9. Define Assimilation.



[Watch Video Solution](#)

10. List the enzymes and their action on food in the stomach and intestine



[Watch Video Solution](#)

11. Give any four reasons why water is necessary in our body.



[Watch Video Solution](#)

12. You have been supplied with a sample of food. How will you perform tests for the presence of starch and proteins in it?



[Watch Video Solution](#)

Review Questions Structured Application Skill Type

1. Draw a neat and labelled diagram of a tooth.



[Watch Video Solution](#)

2. Try to swallow the saliva in your mouth, and feel your neck with your hand. What happens in the neck ?



[Watch Video Solution](#)

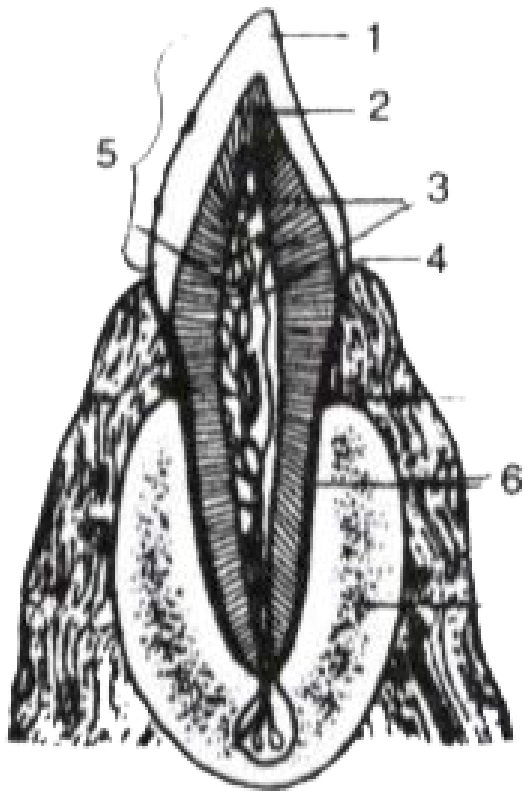
3. Complete the following table by filling in the blanks 1 to 8

Organ	Enzyme	Food acted upon	Final product
1	Pepsin	2	3
Mouth	4	5	Disaccharide
6	7	Maltose	8



[Watch Video Solution](#)

4. Study the diagram given below and then answer the questions that follow :

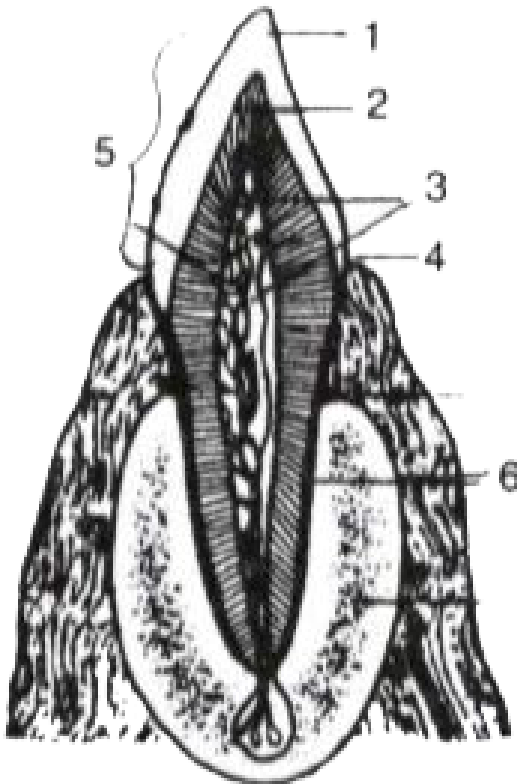


Name the parts labelled 1,2,3,4,5 and 6.



Watch Video Solution

5. Study the diagram given below and then answer the questions that follow :

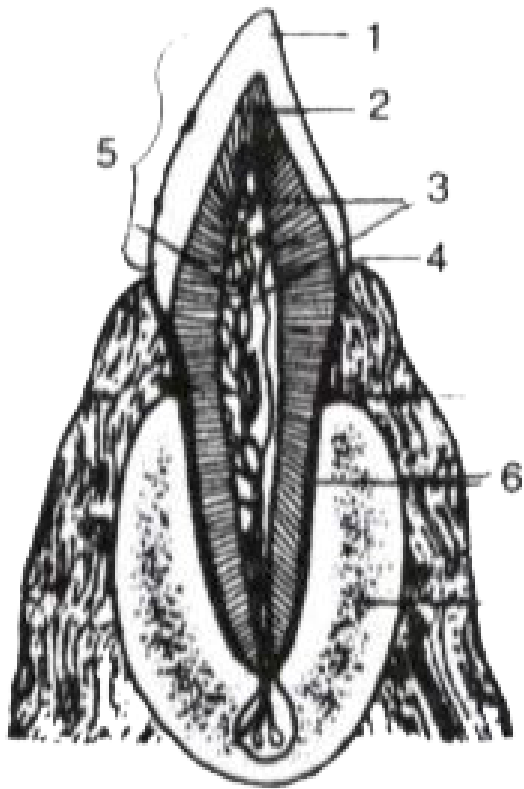


Identify the tooth and give a reason to support your answer.



Watch Video Solution

6. Study the diagram given below and then answer the questions that follow :

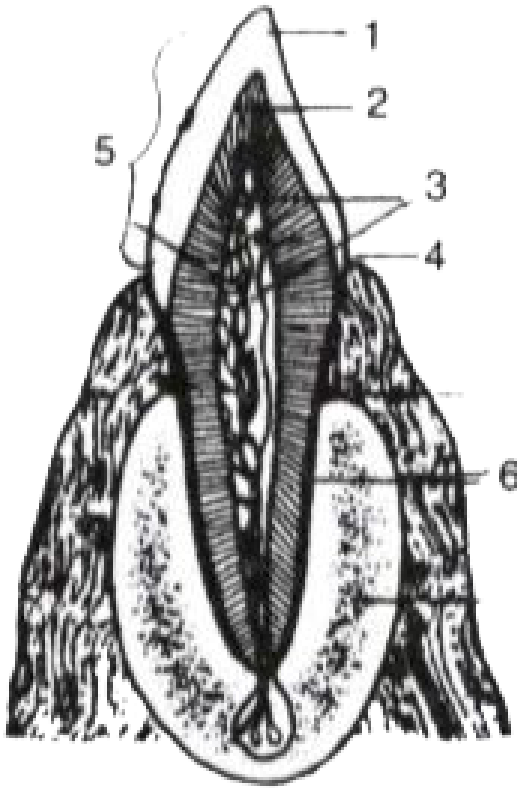


Describe the structure of the part labelled '3'.



Watch Video Solution

7. Study the diagram given below and then answer the questions that follow :



Give the total number of the type of tooth

mentioned in '1' above in an adult and state its function.



[Watch Video Solution](#)

8. Study the following dental formula and then answer the questions that follow :

$$i \frac{3}{4} \quad c \frac{0}{0} \quad pm \frac{0}{1} \quad m \frac{1}{1}$$

What is the total number of teeth in the

(i) upper jaw and (ii) lower jaw ?



[Watch Video Solution](#)

9. Study the following dental formula and then answer the questions that follow :

$$i \frac{3}{4} \quad c \frac{0}{0} \quad pm \frac{0}{1} \quad m \frac{1}{1}$$

State the total number of teeth present in the dentition.



[Watch Video Solution](#)

10. Study the following dental formula and then answer the questions that follow :

$$i \frac{3}{4} \quad c \frac{0}{0} \quad pm \frac{0}{1} \quad m \frac{1}{1}$$

Give the dental formula of an adult human being,



[Watch Video Solution](#)

Review Questions Jumbled Spellings

1. Write the correct word

A predator:

GRIET



[Watch Video Solution](#)

2. Write the correct word

Deficiency of Folic acid (B) produces

MIAAAEN



[Watch Video Solution](#)

3. Write the correct word

A digestive enzyme

ENPISP



[Watch Video Solution](#)

4. Write the correct word

A part of tooth:

TEEDINN



Watch Video Solution

5. Write the correct word

Fatty acids are absorbed into :

TACLELAS



Watch Video Solution

6. Write the correct word

Maltase acts on:

LESOMAT



[Watch Video Solution](#)

7. Write the correct word

Excess amino acids are broken down in:

RIVEL



[Watch Video Solution](#)

8. Write the correct word

An enzyme which digests starch :

YEALMAS



[Watch Video Solution](#)

Progress Check

1. Given below is a jumbled sequence of the different parts of the human alimentary canal
Rewrite them in correct sequence.

Oesophagus, Large Intestine, Small Intestine,
Pharynx.



[Watch Video Solution](#)

2. Give the technical names for the following
types of teeth in humans :

The three last grinders.



[Watch Video Solution](#)

3. Give the technical names for the following types of teeth in humans :

The pointed tooth for holding and tearing.



Watch Video Solution

4. Give the technical names for the following types of teeth in humans :

The broad sharp cutting teeth.



Watch Video Solution

5. Give the technical names for the following types of teeth in humans :

The two temporary grinding teeth.



[Watch Video Solution](#)

6. Name the following parts of a tooth:

Part exposed above the gum.



[Watch Video Solution](#)

7. Name the following parts of a tooth:

The hard substance making the covering of the tooth.



Watch Video Solution

8. Name the following parts of a tooth:

The soft connective tissue contained in the central space of the tooth.



Watch Video Solution

9. Name the following parts of a tooth:

Bone-like structure fixing the root in position.



Watch Video Solution

10. Name the following parts of a tooth:

Slight constriction between the root and the crown.



Watch Video Solution

11. Mention if the following statements are true (T) or false (F):

Saliva moistens and lubricates food.



Watch Video Solution

12. Mention if the following statements are true (T) or false (F):

Saliva contains a protein-digesting enzyme.



Watch Video Solution

13. Mention if the following statements are true (T) or false (F):

Saliva tends to destroy germs in the mouth.



Watch Video Solution

14. Mention if the following statements are true (T) or false (F):

Peristalsis occurs through all regions of the gut.



Watch Video Solution

15. Mention if the following statements are true (T) or false (F):

The food in stomach stays for about 10 hours.



Watch Video Solution

16. Mention if the following statements are true (T) or false (F):

Gastric juice is alkaline.



Watch Video Solution

17. Mention if the following statements are true (T) or false (F):

Gastric juice contains pepsinogen.



Watch Video Solution

18. Name the three salivary glands.



Watch Video Solution

19. Mention if the following statements are true (T) or false (F)

Intestinal villi have a lymph vessel called lacteal.



Watch Video Solution

20. Mention if the following statements are true (T) or false (F)

Intestine is narrow for fast movement of food.



Watch Video Solution

21. Mention if the following statements are true (T) or false (F)

Large intestine secretes no enzymes.



Watch Video Solution

22. Mention if the following statements are true (T) or false (F)

Bile neutralizes the acid content of the food received from the stomach.



Watch Video Solution

23. Mention if the following statements are true (T) or false (F)

Pancreatic juice has enzymes to digest all the major components of food.



Watch Video Solution

24. Mention if the following statements are true (T) or false (F)

The anus is surrounded by circular muscles.



Watch Video Solution

25. Name the following:

The three subdivisions of the small intestine.



Watch Video Solution

26. Name the following:

The three subdivisions of the large intestine.



Watch Video Solution

27. Name the enzyme which digests:

starch in the mouth



Watch Video Solution

28. Name the enzyme which digests:

fats in the ileum



Watch Video Solution

29. Give appropriate biological / technical

terms for the following:

An enzyme which digests protein in duodenum



[Watch Video Solution](#)

30. Name the enzyme which digests:

sucrose in the ileum



[Watch Video Solution](#)

31. What are the end-products of digestion of:

Proteins



Watch Video Solution

32. What are the end-products of digestion of:

Fats



Watch Video Solution

33. What are the end-products of digestion of:

Starch



Watch Video Solution

34. What are the end-products of digestion of:

Sucrose



Watch Video Solution

35. Fill in the blanks.

Liver stores glucose as



Watch Video Solution

36. Fill in the blanks.

Liver produces only in embryo.



Watch Video Solution

37. Fill in the blanks.

Urea is produced in by the deamination
of extra



Watch Video Solution

38. Fill in the blanks.

For testing the action of saliva on starch, the material has to be kept at a temperature of about °C.



Watch Video Solution

39. Mention the constituent of food if the end result of the test shows :

White to yellow and yellow to orange colour, after adding ammonium hydroxide.





[Watch Video Solution](#)

40. Mention the constituent of food if the end result of the test shows :

Turning blue-black after adding iodine solution.



[Watch Video Solution](#)

41. Mention the constituent of food if the end result of the test shows :

Blue green to deep red with appearance of precipitate when added to Fehling solution.



[Watch Video Solution](#)

42. Mention the constituent of food if the end result of the test shows :

Ash that does not burn after continued heating



[Watch Video Solution](#)