



# BIOLOGY

## BOOKS - ICSE

### ICSE EXAMINATION PAPER, 2020

#### Section I

1. Name the following

An organisation that extends relief during  
floods, earthquakes etc.



**Watch Video Solution**

**2. Name the following**

The tissue which conducts water in a plant.



**Watch Video Solution**

**3. Name a modified sweat gland.**



**Watch Video Solution**

4. Name the following

The physical process by which air is taken in and forced out of the lungs



**Watch Video Solution**

5. Name the following

The formula which represents the number and kind of teeth in man.



**Watch Video Solution**

6. The digestive juice which does not contain any enzyme:

A. Saliva

B. Gastric juice

C. Bile

D. Pancreatic juice

**Answer:**



**Watch Video Solution**

7. Which one of the following is a vitamin deficiency disease?

A. Diabetes

B. Goitre

C. Marasmus

D. Scurvy

**Answer:**



**Watch Video Solution**

8. Which one of the following diseases is caused by a fungus?

A. King worm

B. Round worm

C. Tape Worm

D. Typhoid

**Answer:**



**Watch Video Solution**

9. Which one of the following is not an antibiotic?

A. Penicillin

B. Steapsin

C. Streptomycin

D. Chloromycetin

**Answer:**



**Watch Video Solution**

**10.** The term neuter is given to a flower in which both

- A. Androecium and gynoecium are present
- B. Calyx and corolla are present
- C. Androecium and gynoecium are absent
- D. Calyx and corolla are absent.

**Answer:**



**Watch Video Solution**



11. Correct the statements by changing the underlined word :

Iron is the mineral required for the proper functioning of the thyroid gland



**Watch Video Solution**

12. Correct the statements by changing the underlined word :

Respiration takes place in the chloroplasts.



**Watch Video Solution**

**13.** Correct the statements by changing the underlined word :

Vasoconstriction occurs during summer.



**Watch Video Solution**

**14.** Correct the statements by changing the underlined word :

Axis is the first cervical vertebra.



**Watch Video Solution**

**15.** Correct the statements by changing the underlined word :

Segregation is the disposal of waste by burning



**Watch Video Solution**

**16.** Given below are sets of five terms each. Rewrite the terms in a logical sequence beginning with the word that is underlined:

Seed, Seedling , Pollination , Germination ,  
Fertilization



**Watch Video Solution**

**17.** Given below are sets of five terms each.  
Rewrite the terms in correct order in a logical  
sequence beginning with the term that is  
underlined.

Larynx, Alveolus , Trachea , Bronchiole, Nose



**Watch Video Solution**

18. Given below are sets of five terms each.  
Rewrite the terms in a logical sequence  
beginning with the word that is underlined:

Lumbar, Cervical, Coccyx, Sacrum, Thoracic



**Watch Video Solution**

19. Given below are sets of five terms each.  
Rewrite the terms in a logical sequence  
beginning with the word that is underlined:

Caecum, Rectum , Colon, Jejunum, Ileum



**Watch Video Solution**

**20.** Given below are sets of five terms each.

Rewrite the terms in a logical sequence beginning with the word that is underlined:

Metacarpals, Radius , Humerus, Carpals ,  
Phalanges



**Watch Video Solution**

**21.** Choose the odd one out of the following terms given and name the category to which

the others belong:

Pesticides, Old computers, Tissue paper,  
Electronic toys



**Watch Video Solution**

**22.** Choose the odd one out of the following  
terms given and name the category to which  
the others belong:

Saliva, Water, Sweat, Tears



**Watch Video Solution**

**23.** Choose the odd one out of the following terms given and name the category to which the others belong:

Ilium, Sacrum, Ischium, Pubis



**Watch Video Solution**

**24.** Choose the odd one out of the following terms given and name the category to which the others belong:

Whale, Shark, Dolphin



**Watch Video Solution**



**25.** Choose the odd one out of the following terms given and name the category to which the others belong:

Vitamin C, Vitamin K, Vitamin A, Vitamin E



**Watch Video Solution**

**26.** Match the items given in the Column A with the most appropriate ones in Column B

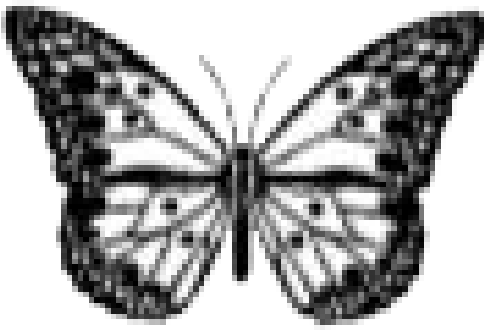
and write the correct matching pairs :

Column A	Column B
(i) Inspiration	- Iodine solution
(ii) Glucose test	- Ribs move inward and downward
(iii) Amoebic dysentery	- Mosquito
(iv) Starch test	- Entamoeba
(v) Vector	- Tape worm
	- Fehling's solution
	- Ribs move upward and outward



**Watch Video Solution**

**27.** Study the picture given below and answer the questions that follow:

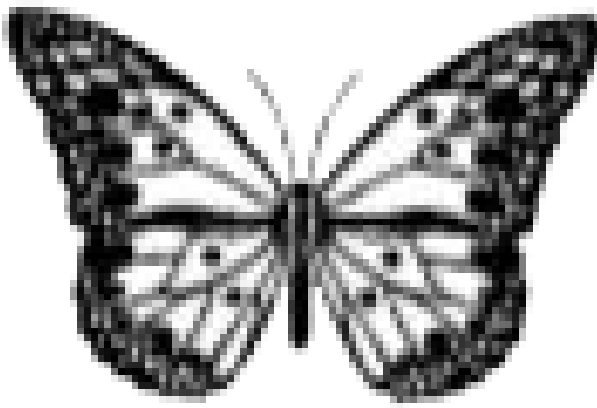


Identify the organism



**Watch Video Solution**

**28.** Study the picture given below and answer the questions that follow:

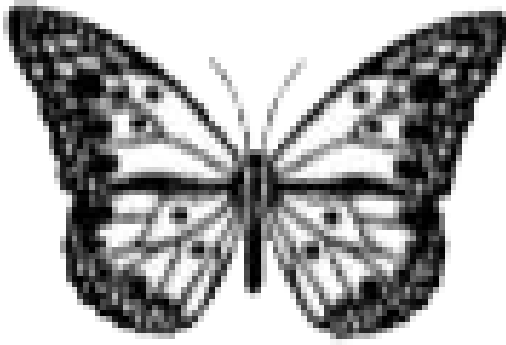


Name the phylum it belongs to.



**Watch Video Solution**

**29.** Study the picture given below and answer the questions that follow:

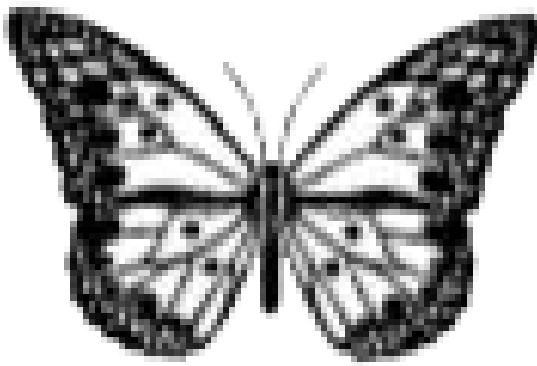


What is its exoskeleton made up of?



**Watch Video Solution**

**30.** Study the picture given below and answer the questions that follow:

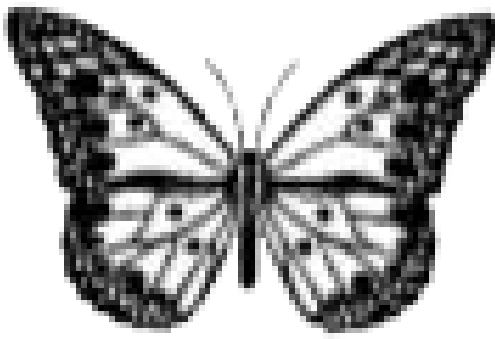


Explain the term .Mouling..



**Watch Video Solution**

**31.** Study the picture given below and answer the questions that follow:



What are Vertebrates?



**Watch Video Solution**

**32. Explain the Digestion**



**Watch Video Solution**

**33. Explain the Antiseptic**



**Watch Video Solution**

**34. Define a tissue.**



**Watch Video Solution**

**35. Explain the Heat Stroke**



**Watch Video Solution**



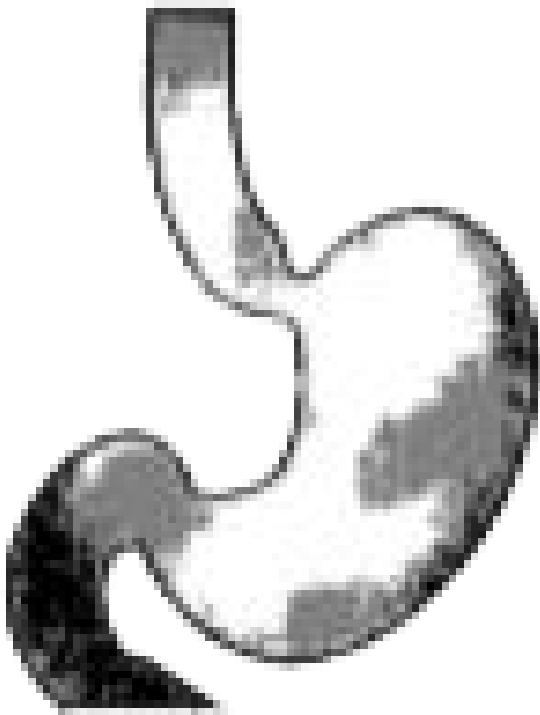
### 36. Explain the Peristalsis



**Watch Video Solution**

## Section II

1. The picture given below is a part of the alimentary canal.



Identify the organ.



**Watch Video Solution**

2. The picture given below is a part of the alimentary canal.



Name the digestive juice secreted by it.



**Watch Video Solution**

3. The picture given below is a part of the alimentary canal.



What is the significance of hydrochloric acid in the digestive juice?



**Watch Video Solution**

4. The picture given below is a part of the alimentary canal.



Mention the enzyme in the digestive juice.

What is its action on food?



Watch Video Solution

5. The picture given below is a part of the alimentary canal.



Draw a neat, labelled diagram of an intestinal villus.



**Watch Video Solution**

**6. Mention the exact location of the Pancreas**



**Watch Video Solution**

**7. Mention the exact location of the Nectaries**



**Watch Video Solution**

**8. Mention the exact location of the Sieve tubes**



**Watch Video Solution**

**9. Mention the exact location of the Stomata**



**Watch Video Solution**

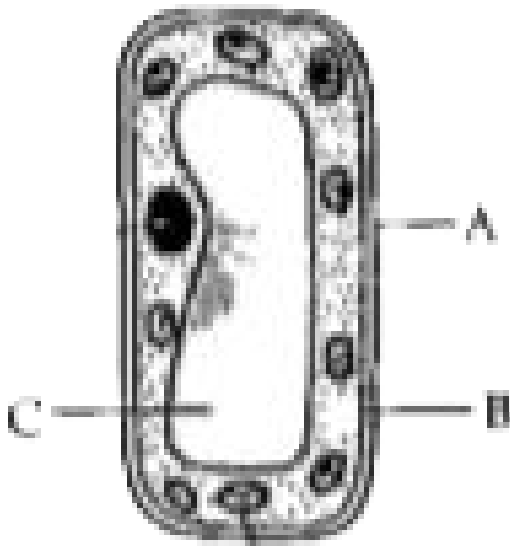
**10. Mention the exact location of the Sternum**



**Watch Video Solution**



**11.** The diagram given below shows a few parts of a cell.

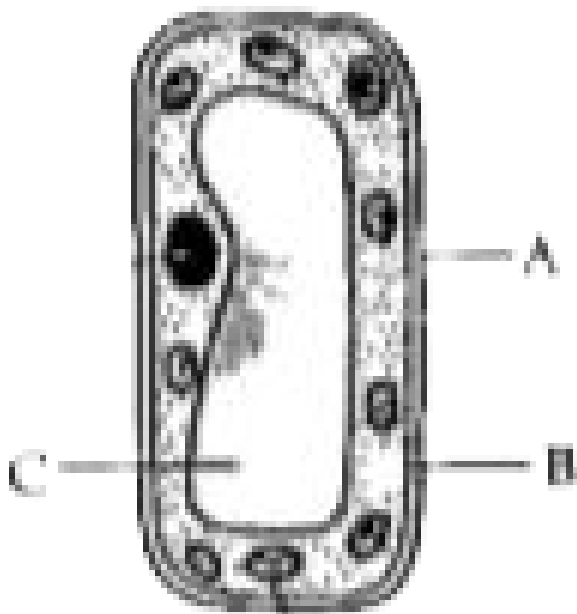


Is it a plant or animal cell? Give a reason to support your answer.



Watch Video Solution

**12.** The diagram given below shows a few parts of a cell.

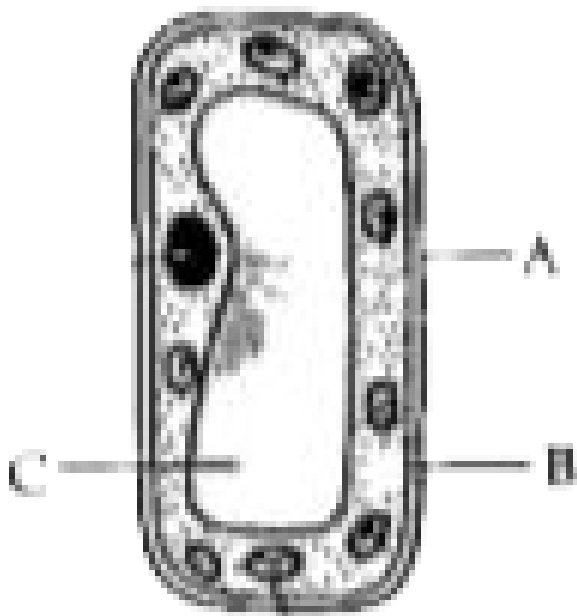


State the difference between the parts labelled A and B on the basis of permeability.



**Watch Video Solution**

**13.** The diagram given below shows a few parts of a cell.



State the difference between the parts labelled A and B on the basis of permeability.



**Watch Video Solution**

**14.** Name the cell organelles concerned with the following functions.

1. Production of energy

2. Protein synthesis



**Watch Video Solution**

**15.** State the functions of the following cell organelles

1. Golgi bodies

2. Endoplasmic reticulum

3. Nucleus



**Watch Video Solution**

**16.** Differentiate between the following pairs on the basis of what is given in the brackets:

Glycolysis and Krebs cycle (Amount of energy released)



**Watch Video Solution**

**17.** Mention one difference between each of the following pairs with reference to what is mentioned in the brackets:

Prokaryotic cell and Eukaryotic cell (Nucleus)



**Watch Video Solution**

**18.** Mention one difference between each of the following pairs with reference to what is mentioned in the brackets:

## Cellulose and Glycogen (Occurrence in organisms)



**Watch Video Solution**

**19.** Mention one difference between each of the following pairs with reference to what is mentioned in the brackets:

Ascariasis and Taeniasis (Pathogen)



**Watch Video Solution**



**20.** Differentiate between the following pairs on the basis of the aspect given in the brackets.

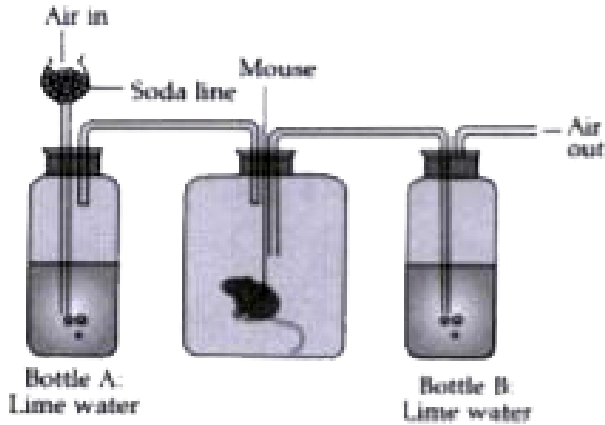
Respiration and photosynthesis (gas released).



**Watch Video Solution**

**21.** Given below is an experimental setup to demonstrate a particular process in animals.

Answer the questions that follow:



(i) Name the physiological process being studied.

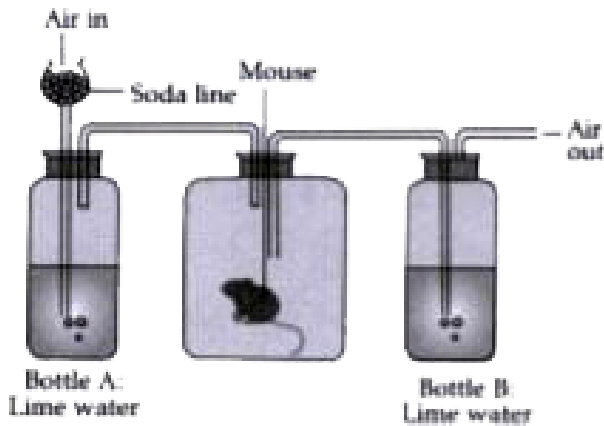
(ii) Define the process mentioned in (i).



**Watch Video Solution**

**22.** Given below is an experimental setup to demonstrate a particular process in animals.

Answer the questions that follow:



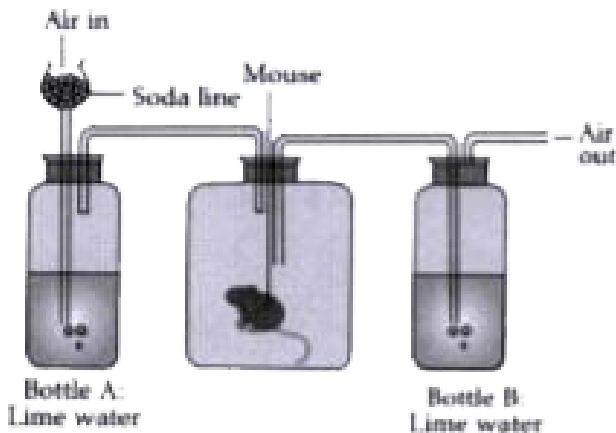
- (i) Name the physiological process being studied.
- (ii) Define the process mentioned in (i).



**Watch Video Solution**

23. Given below is an experimental setup to demonstrate a particular process in animals.

Answer the questions that follow:



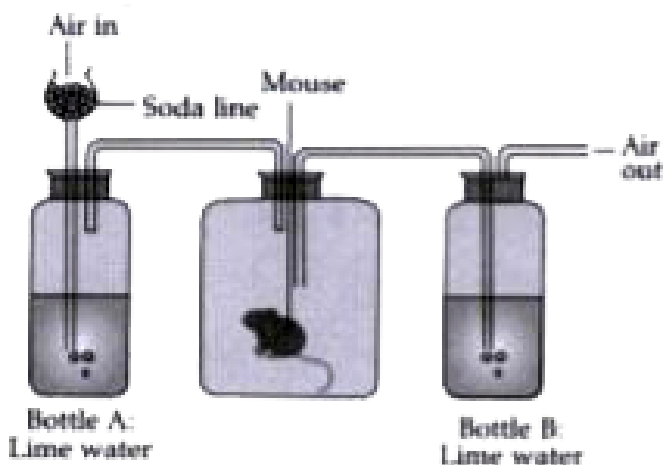
What is the function of soda lime?



**Watch Video Solution**

24. Given below is an experimental setup to demonstrate a particular process in animals.

Answer the questions that follow:



After a few hours what will happen to the lime water in Bottle A and in Bottle B? Give suitable reasons for your answer.



**Watch Video Solution**

**25.** Given below is an experimental setup to demonstrate a particular process in animals.

Answer the questions that follow :



Write a balanced chemical equation for the process carried out by the mouse.



**Watch Video Solution**

**26.** Biceps and (A) ..... are (B) ..... muscles causing opposing movements



**Watch Video Solution**

27. (A) ..... is the largest digestive gland in the human body and secretes (B)....



**Watch Video Solution**

28. (A) ..... is heating milk to a temperature of (B).....  $^{\circ}C$  and then chilling quickly



**Watch Video Solution**

**29.** Glucose is incompletely broken down to (A) ..... alcohol in plants during (B)..... respiration.



**Watch Video Solution**

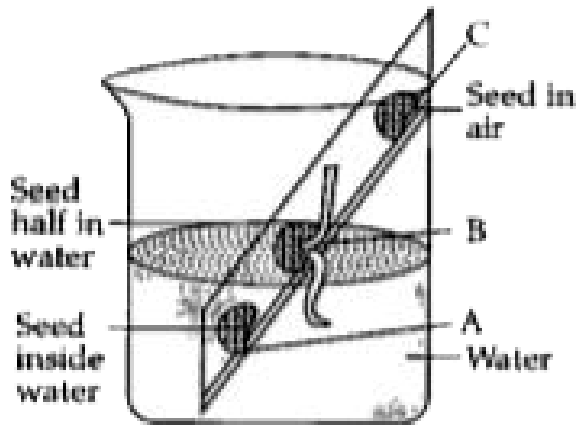
**30.** Scrubbers are devices to remove (A) ..... and (B) ..... air pollutants.



**Watch Video Solution**



**31.** The diagram given below shows three bean seeds placed at different levels.

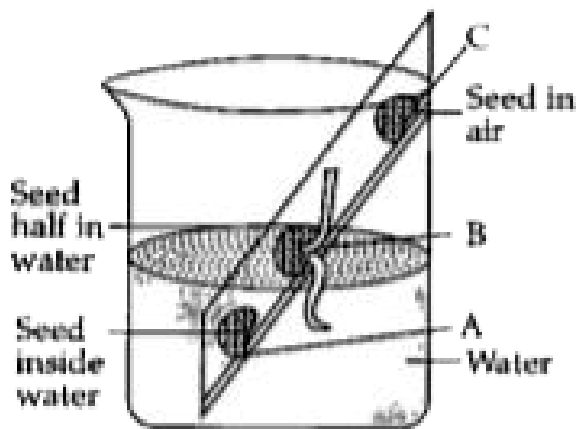


What changes will you observe in the seeds A, B and C after a few days? Explain with suitable reasons.



**Watch Video Solution**

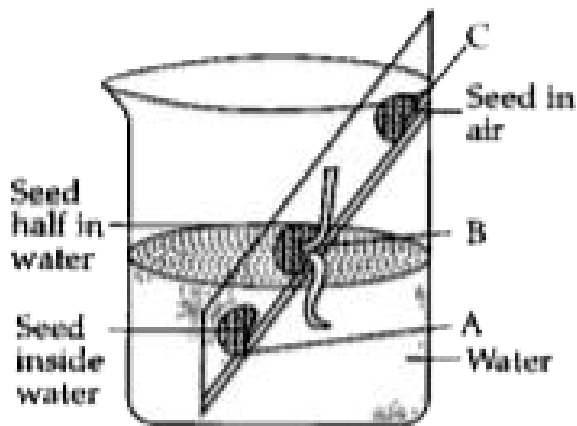
**32.** The diagram given below shows three bean seeds placed at different levels.



What changes will you observe in the seeds A, B and C after a few days? Explain with suitable reasons.



**33.** The diagram given below shows three bean seeds placed at different levels.



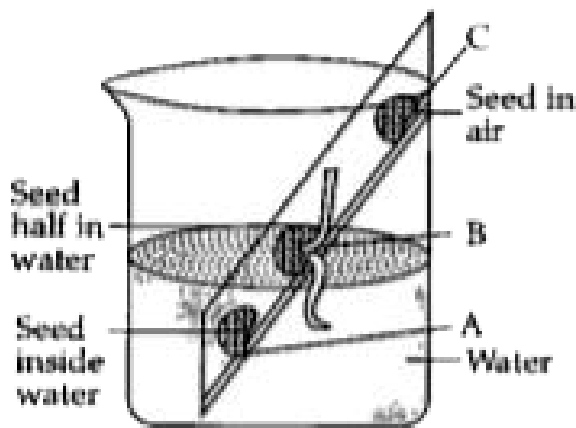
What changes will you observe in the seeds A,

B and C after a few days? Explain with suitable reasons.



**Watch Video Solution**

**34.** The diagram given below shows three bean seeds placed at different levels.

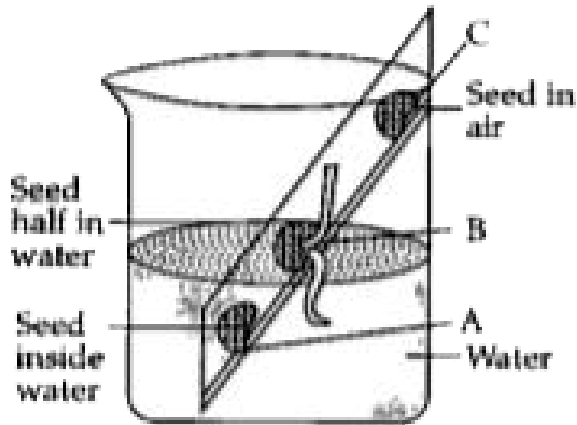


What changes will you observe in the seeds A, B and C after a few days? Explain with suitable reasons.



**Watch Video Solution**

**35.** The diagram given below shows three bean seeds placed at different levels.



What changes will you observe in the seeds A, B and C after a few days? Explain with suitable reasons.



**Watch Video Solution**

**36.** Give biological explanations for the following statements:

A Bat is a Mammal.



**Watch Video Solution**

**37.** Give biological explanations for the following statements:

Leguminous plants increase soil fertility.



**Watch Video Solution**

**38.** Give biological explanations for the following statements:

Earthworms are very useful in agriculture.



**Watch Video Solution**

**39.** Give biological explanations for the following statements:

Roughage is an important part of our diet.



**Watch Video Solution**



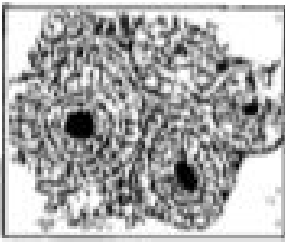
**40.** Give biological explanations for the following statements:

Living rooms in our houses must receive direct sunlight for a few hours.

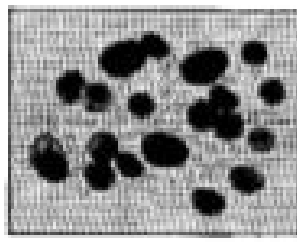


**Watch Video Solution**

**41.** The diagram given below shows the supportive connective tissue.



A



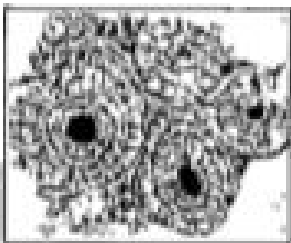
B

Identify the tissues A and B.

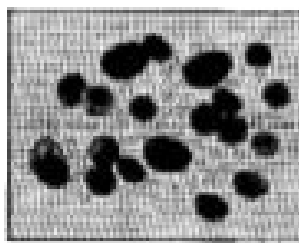


**Watch Video Solution**

**42.** The diagram given below shows the supportive connective tissue.



A



B

Where are the above tissues found in the human body?



**Watch Video Solution**

**43.** What is a joint? Give one example of an immovable joints.



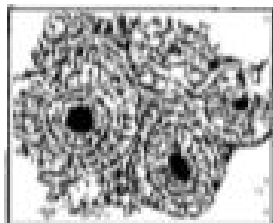
**Watch Video Solution**

**44.** State the function of the Synovial fluid.

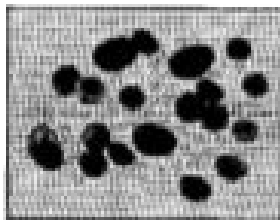


**Watch Video Solution**

**45.** The diagram given below shows the supportive connective tissue.



A



B

Draw neat diagrams of the three types of blood cells.



**Watch Video Solution**

**46.** Give the biological terms for each of the following:

Category of organisms which can interbreed among themselves.



**Watch Video Solution**

**47.** Give the biological terms for each of the following:

Blind sacs in the lungs where exchange of respiratory gases takes place.





[Watch Video Solution](#)

**48.** Give the biological terms for each of the following:

The muscular structure that manipulates food in the mouth.



[Watch Video Solution](#)

**49.** Give the biological terms for each of the following:

The plastids which give red and orange colour to fruits and flowers.



**Watch Video Solution**

**50.** Give the biological terms for each of the following:

Resistance developed in the body due to a previous infection.



**Watch Video Solution**

**51.** Give the biological terms for each of the following:

Disease in which there is no germ and cannot spread from one person to another



**Watch Video Solution**

**52.** Give the biological terms for each of the following:

The principal heat regulating centre in the brain.







[Watch Video Solution](#)

**53.** Give the biological terms for each of the following:

The type of tissue that lines the respiratory tracts.



[Watch Video Solution](#)

**54.** Give the biological terms for each of the following:

The involuntary muscles found in heart.



**Watch Video Solution**

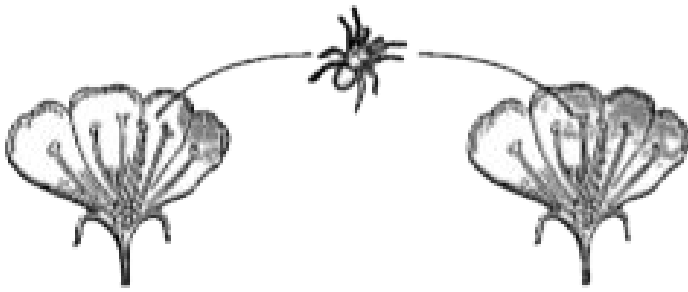
**55.** Give the biological terms for each of the following:

Introduction of weakened germs into the body to develop resistance against a disease.



**Watch Video Solution**

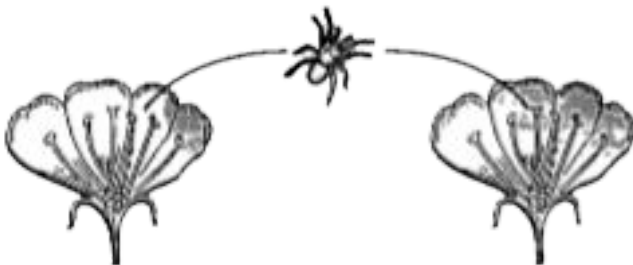
**56.** The diagram given below represents a process occurring in a flower.



Name the process and explain it.

 **Watch Video Solution**

57. The diagram given below represents a process occurring in a flower.

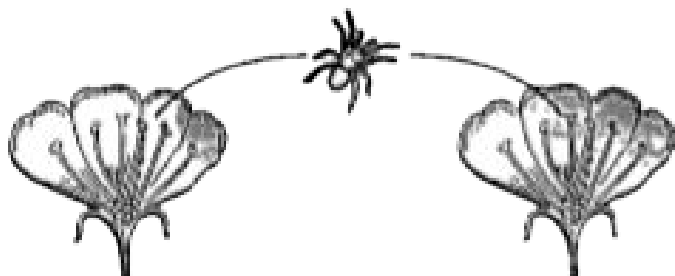


Mention the agent involved in the above process.



**Watch Video Solution**

**58.** The diagram given below represents a process occurring in a flower.

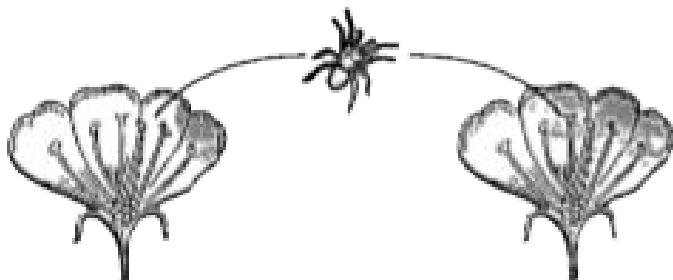


What is Double Fertilisation..



**Watch Video Solution**

**59.** The diagram given below represents a process occurring in a flower.

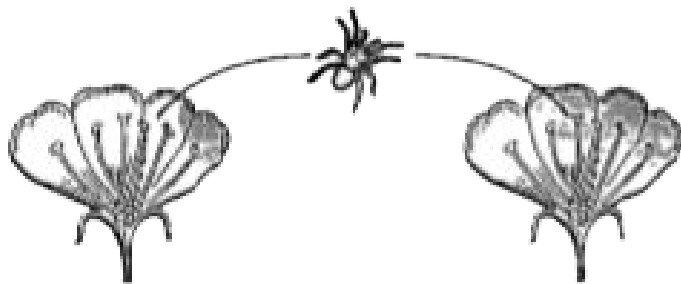


Define the term .Inflorescence..



**Watch Video Solution**

**60.** The diagram given below represents a process occurring in a flower.



Draw a neat, labelled diagram of a carpel.



**Watch Video Solution**

**61.** List any two activities of WHO.



**Watch Video Solution**

**62.** Write a balanced equation to represent anaerobic respiration in plants.



**Watch Video Solution**

**63.** Mention two functions of the human skin



**Watch Video Solution**

**64.** Name the two membranes covering the lungs.



**Watch Video Solution**

**65.** Give two examples of Amphibians.



**Watch Video Solution**