



BIOLOGY

BOOKS - ICSE

TISSUES - PLANT AND ANIMAL TISSUES

Topic 1 1 Mark Questions

1. What is the thickening present in collenchyma cell called?



[Watch Video Solution](#)

2. Name a dead, suberised, waterproof tissue present at the outer surface of mature woody plants.



[Watch Video Solution](#)

3. Name the following

The tissue which conducts water in a plant.



[Watch Video Solution](#)

4. What is the name of parenchyma cells associated with the sieve tube of the phloem called?



[Watch Video Solution](#)

5. In potato, starch is stored in



[Watch Video Solution](#)

6. Parenchyma containing chloroplasts is known as:



[Watch Video Solution](#)

7. Name the dead components of xylem.



[Watch Video Solution](#)

8. Tissues made up of cells that do not have the ability to divide.



[Watch Video Solution](#)

9. Give an example of permanent tissue.



[Watch Video Solution](#)

Topic 1 2 Marks Questions

1. What are the two basic types of plant tissues?



[Watch Video Solution](#)

2. What are the constituents of xylem?



Watch Video Solution

3. Give the technical terms for the

The category of plant tissues that have lost their ability to multiply



Watch Video Solution

4. Give the technical terms for the

The kind of plant cells with thin walls and usually a single large vacuole



[Watch Video Solution](#)

5. Give the technical terms for the

Elongated cells which are thickened at the corners.



[Watch Video Solution](#)

6. Give the technical terms for the

The basic type of tissue which provide the upward movement of water and dissolved materials from the roots to other parts of the plant.



Watch Video Solution

7. Choose the ODD one out from the following terms given and name the CATEGORY to which the others belong :

Parenchyma, Collenchyma, Intercalary
meristem, Xylem, Phloem



[Watch Video Solution](#)

8. Differentiate between the following pairs on
the basis of what is given in the brackets :

Apical meristem and lateral meristem
(Location).



[Watch Video Solution](#)

9. Differentiate between the following pairs on the basis of what is given in the brackets :

Xylem and phloem (Function).



[Watch Video Solution](#)

Topic 1 3 Marks Questions

1. Name the kind of tissue found : At the tip of plant roots



[Watch Video Solution](#)

2. Name the kind of tissue found : At the lower surface of leaf



Watch Video Solution

3. Name the kind of tissue found in the walls of the veins of leaves.



Watch Video Solution

4. Describe different types of neurons on the basis of their functions.



Watch Video Solution

5. Mention any three characteristics of permanent tissues.



Watch Video Solution

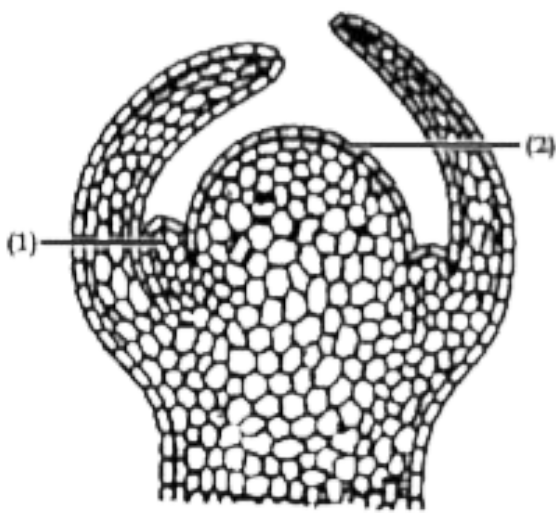
6. On the basis of cell wall, differentiate between parenchyma , collenchyma and sclerenchyma.



[Watch Video Solution](#)

Topic 1 5 Marks Questions

1. Study the diagram given below and answer the questions that follow :

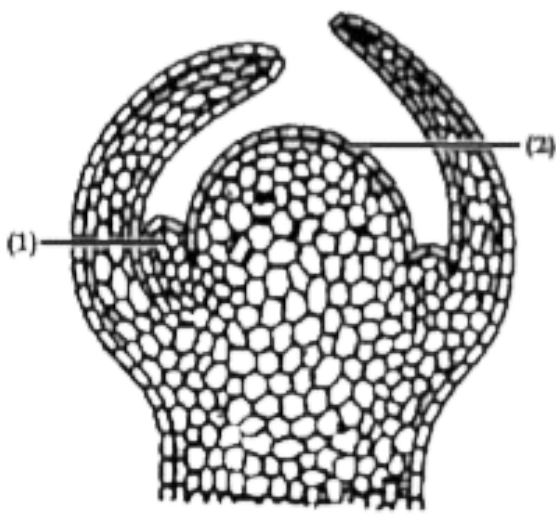


Identify the above structure and mention its location in a plant.



Watch Video Solution

2. Study the diagram given below and answer the questions that follow :

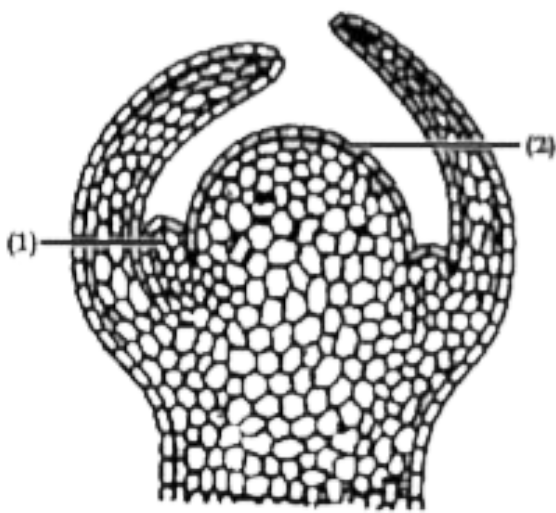


Label the parts numbered 1 and 2.



Watch Video Solution

3. Study the diagram given below and answer the questions that follow :

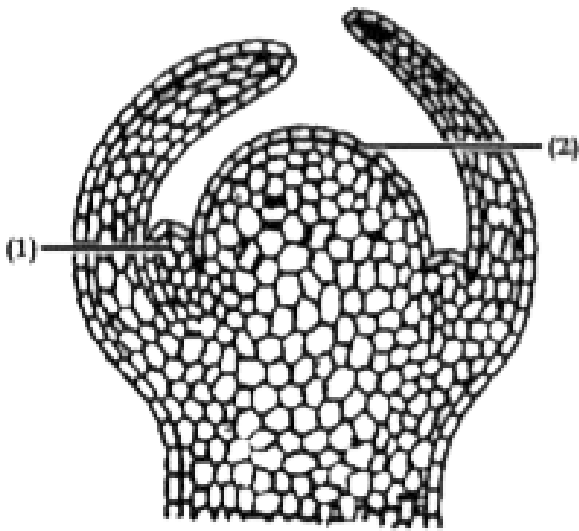


Explain the term .Axillary bud..



[Watch Video Solution](#)

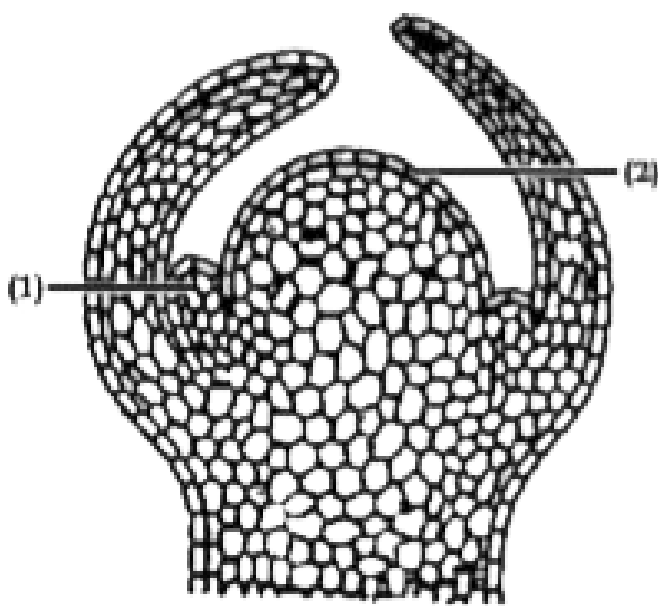
4. Study the diagram given below and answer the questions that follow :



Which tissue is found in this structure?

 [Watch Video Solution](#)

5. Study the diagram given below and answer the questions that follow :



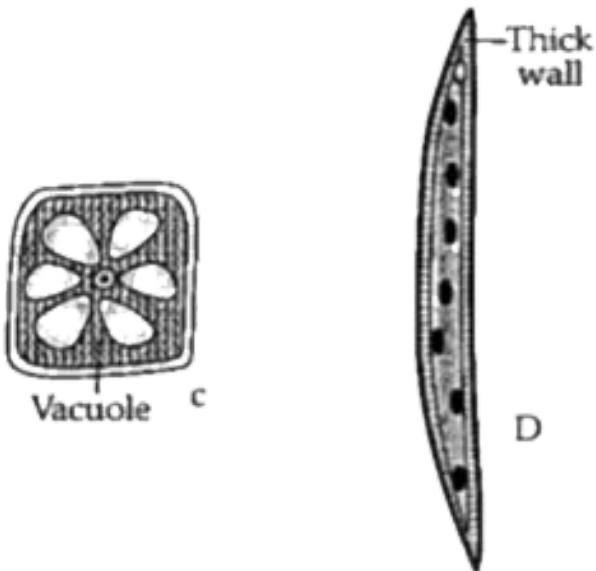
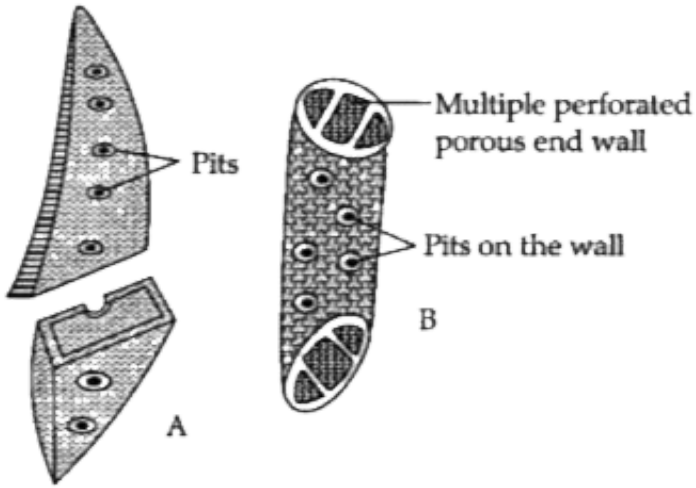
Draw a neat, labelled diagram of a meristematic cell.



[Watch Video Solution](#)

6. Given below are compounds of xylem and phloem. Study the same and answer the

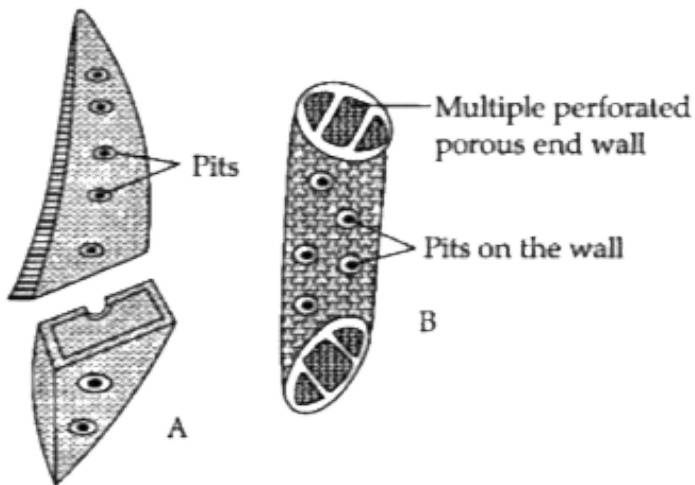
questions given below :

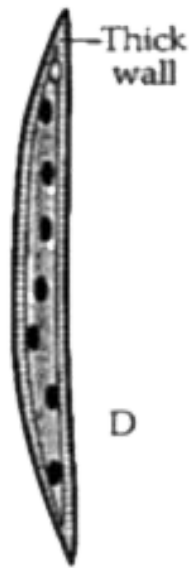
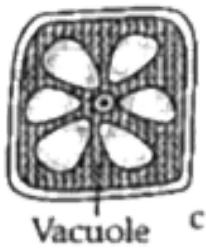


Name the structure labelled as A, B, C, and D.



7. Given below are compounds of xylem and phloem. Study the same and answer the questions given below :

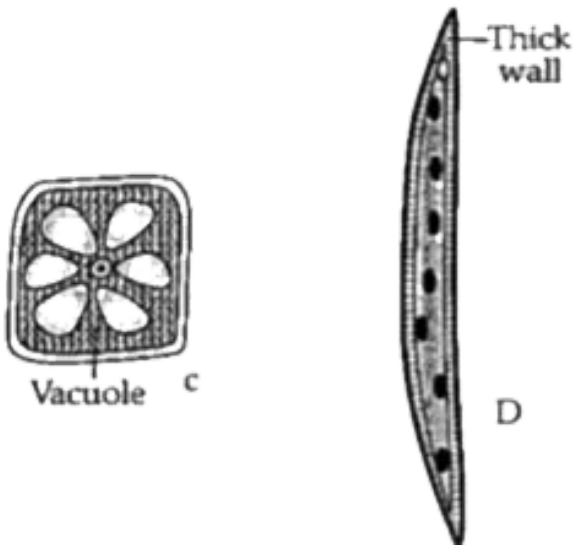
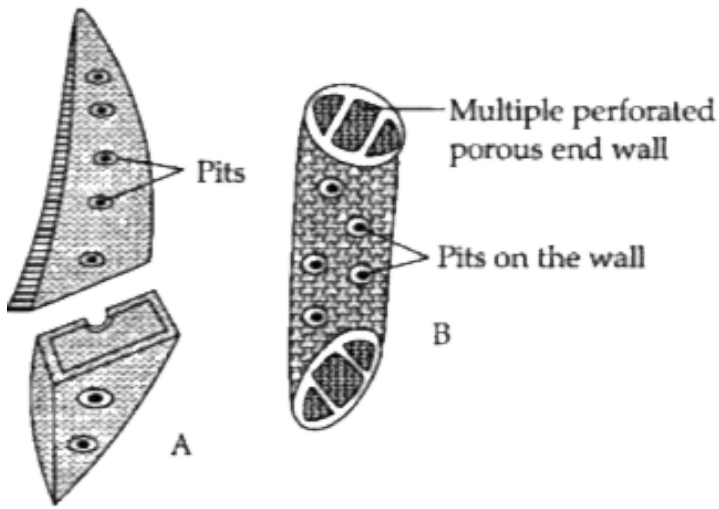




State the location of xylem.

[Watch Video Solution](#)

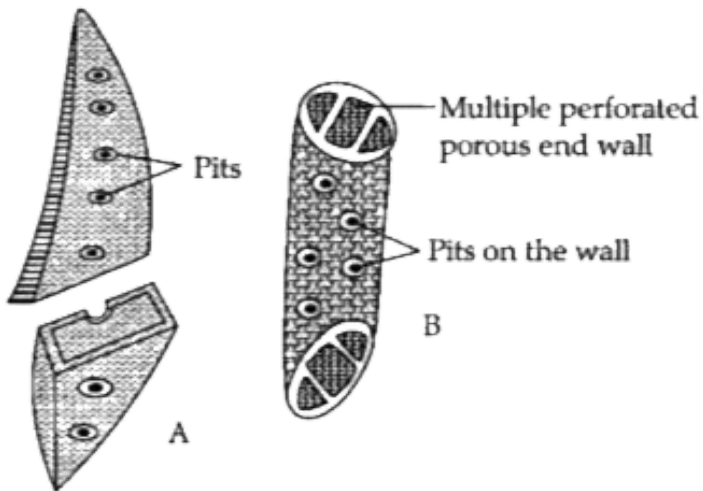
8. Given below are compounds of xylem and phloem. Study the same and answer the questions given below :

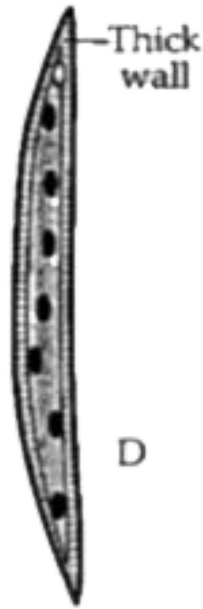
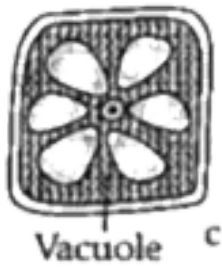


Name the structure among the four that acts as the storage house of food.



9. Given below are compounds of xylem and phloem. Study the same and answer the questions given below :

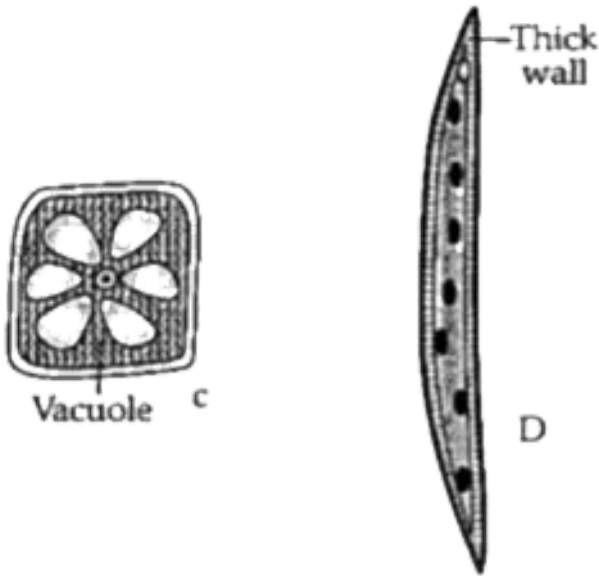
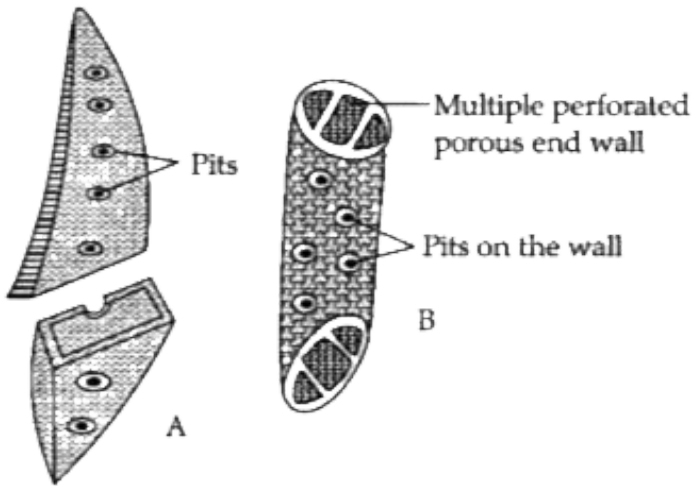




Why is xylem called wood ?

 [Watch Video Solution](#)

10. Given below are compounds of xylem and phloem. Study the same and answer the questions given below :

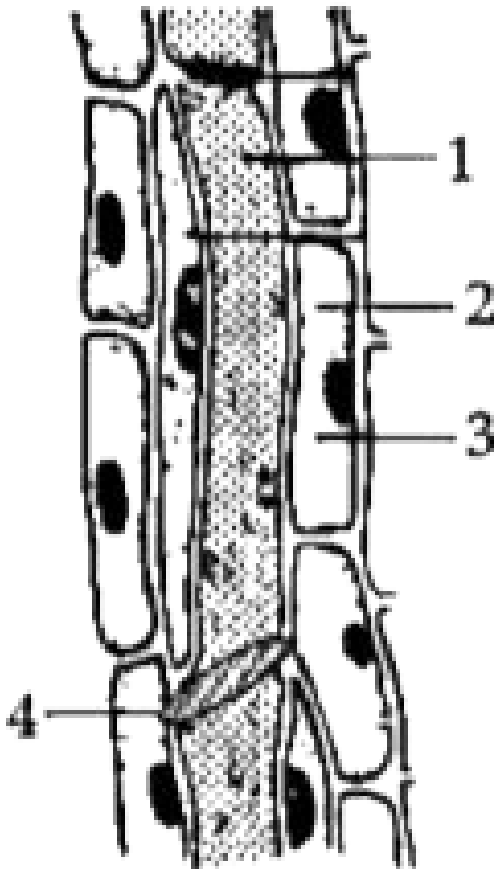


Draw a neat, labelled diagram of a phloem.



Watch Video Solution

11. Study the diagram given below and then answer the questions that follow :



Identify the tissue and give a reason to support your answer.



Watch Video Solution

12. Study the diagram given below and then answer the questions that follow :

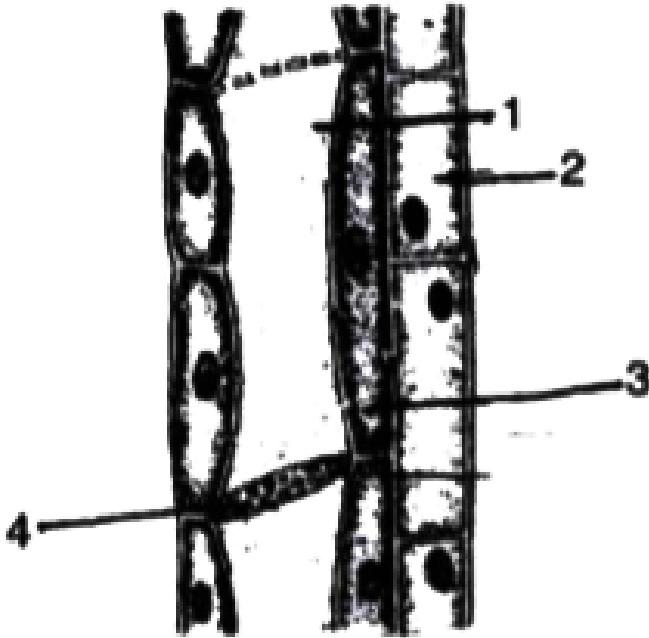


Name the parts labelled 1,2,3 and 4.



Watch Video Solution

13. Study the diagram given below and then answer the question that follow :



Where is this tissue likely to be found in the plant?



[Watch Video Solution](#)

14. Study the diagram given below and then answer the questions that follow :



State the function of the parts labelled 1,2,3 and 4



Watch Video Solution

Topic 2 1 Mark Questions

1. External ears are supported by:

A. Bone

B. Tendon

C. Ligaments

D. Cartilage

Answer: D



Watch Video Solution

2. A fluid connective tissue



Watch Video Solution

3. What is the lubricating fluid around a movable skeletal joint called?



[Watch Video Solution](#)

4. Name a contractile tissue made up of muscles.



[Watch Video Solution](#)

5. Give an example of a nervous tissue.



[Watch Video Solution](#)

Topic 2 2 Marks Questions

1. Name the kind of animal tissue in which
Cells are flat, cuboidal or columnar, forming
protective layer.



[Watch Video Solution](#)

2. Name the kind of animal tissue in which

Cells produce and pour out chemical substances.



Watch Video Solution

3. Name the kind of animal tissue in which

Cells can contract and relax.



Watch Video Solution

4. Name the kind of animal tissue in which
Cells can conduct impulses.



Watch Video Solution

5. Name the tissue responsible for movement
of our body.



Watch Video Solution

6. Name the kinds of cells found in the place
surface of the human skin



Watch Video Solution

7. Name the kinds of cells found in the place
Salivary gland



Watch Video Solution

8. Name the kinds of cells found in the place
Brain



Watch Video Solution

9. Name the kinds of cells found in the place
Inner lining of the wind pipe



Watch Video Solution

10. Give the biological terms for each of the following:

The type of tissue that lines the respiratory tracts.



Watch Video Solution

11. Give the biological terms for each of the following:

The involuntary muscles found in heart.



Watch Video Solution

Topic 2 3 Marks Questions

1. Give one example of each of the following tissues where they are located

Ciliated columnar epithelium



[Watch Video Solution](#)

2. Give one example of each of the following tissues where they are located

Elastic cartilage



[Watch Video Solution](#)

3. Give one example of each of the following tissues where they are located

Unstriated muscles



[Watch Video Solution](#)

4. Name the three kinds of muscles found in the human body. In each case, name one region in the body where they are found.



[Watch Video Solution](#)

5. List the tissues found in the human heart?



[Watch Video Solution](#)

6. Choose the ODD one out from the following terms given and name the CATEGORY to which the others belong: Squamous, Cuboidal, Ciliated, Cardiac muscle, Glandular



[Watch Video Solution](#)

7. Choose the ODD one out from the following terms given and name the CATEGORY to which the others belong: Areolar tissue, Adipose tissue, Tendon, Lymph, Ligament



[Watch Video Solution](#)

8. Choose the ODD one out from the following terms given and name the CATEGORY to which the others belong: Epithelium tissue, Muscular

tissue, Collenchyma, Connective tissue,

Nervous tissue



[Watch Video Solution](#)

Topic 2 5 Marks Questions

1. Given below are four living structures. Study the same and answer the questions given below:



Name the structure A, B, C and D.



[Watch Video Solution](#)

2. Given below are four living structures. Study the same and answer the questions given below:



State the living cells in the structure .D..



[View Text Solution](#)

3. Given below are four living structures. Study the same and answer the questions given

below:



Name the fluid in which the structure .B. is found.



Watch Video Solution

4. Given below are four living structures. Study the same and answer the questions given below:



Name the fluid in which the structure .B. is found.

 [Watch Video Solution](#)

5. Given below are four living structures. Study the same and answer the questions given below:



Draw a neat, labelled diagram of a neuron.

 [View Text Solution](#)

6. Study the diagram given below and answer the questions that follow :



Name the structure shown in the diagram.

State in which part it is present.



Watch Video Solution

7. Study the diagram given below and answer the questions that follow :



How this structure is well adapted to respond to the external stimulus?

A. Study the diagram given below and answer the questions that follow :



How this structure is well adapted to respond to the external stimulus?

B.

C.

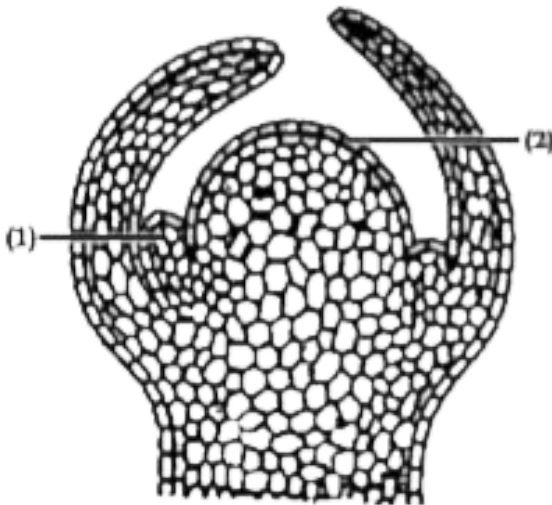
D.

Answer:



View Text Solution

8. Study the diagram given below and answer the questions that follow :



Label the parts numbered 1 and 2.



[Watch Video Solution](#)

9. Study the diagram given below and answer the questions that follow :



Name the broken interval found in the myelin sheath of the axon.



[View Text Solution](#)

10. Study the diagram given below and answer the questions that follow :



Differentiate between the labelled parts 1 and 2.



[View Text Solution](#)

11. Study the diagram given below and answer the questions that follow :



Name the structure shown and label its parts 1 and 2.



[View Text Solution](#)

12. Study the diagram given below and answer the questions that follow :



Does the given structure function voluntarily or involuntarily?



View Text Solution

13. Study the diagram given below and answer the questions that follow :



Name the organ in which this structure is found.



Watch Video Solution

14. Study the diagram given below and answer the questions that follow :



Write two specific characters of this structure.



Watch Video Solution

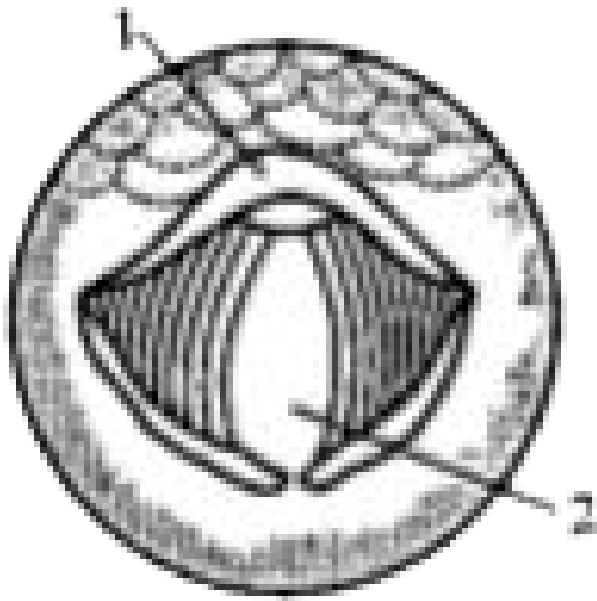
15. Study the diagram given below and answer the questions that follow :



What is an intercalated disc ?

 [View Text Solution](#)

16. Study the diagram given below and answer the questions that follow:



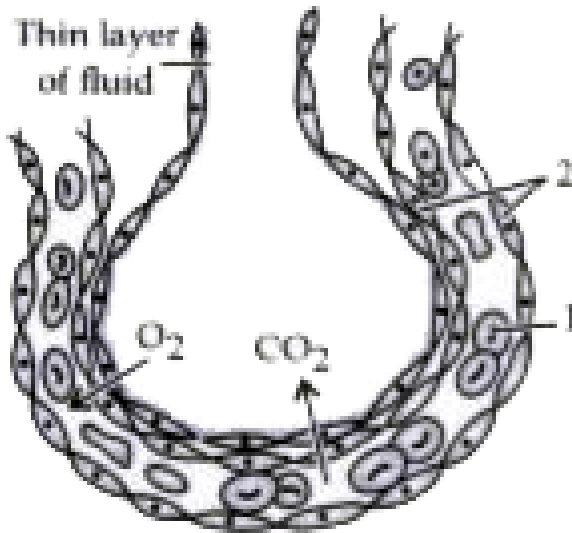
Name the structure shown in the diagram.

State in which part of the body it is present.



Watch Video Solution

17. Study the diagram given below and answer the questions that follow :

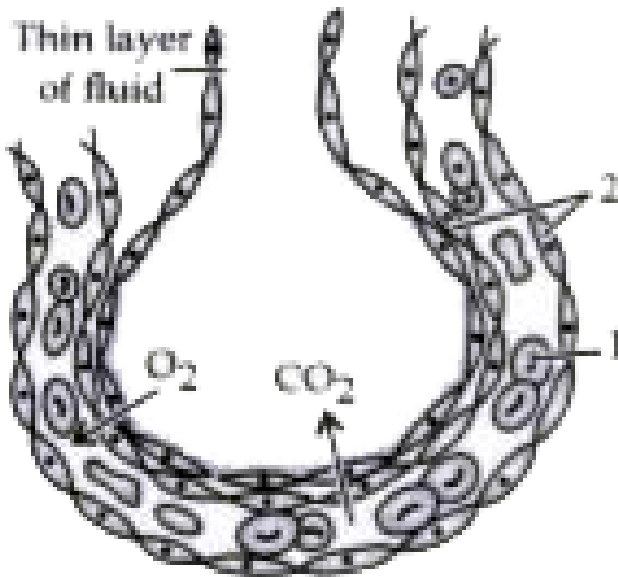


Write the basic function of this structure.



[Watch Video Solution](#)

18. Study the diagram given below and answer the questions that follow :

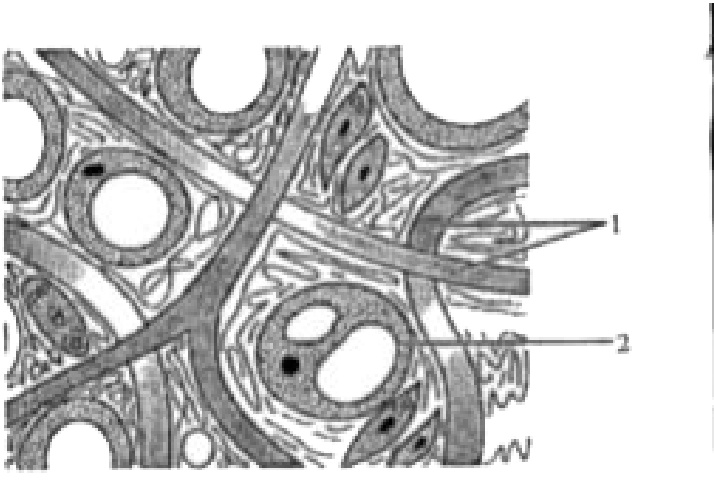


Label the parts numbered as 1 and 2.



Watch Video Solution

19. Study the diagram and answer the questions that follow :

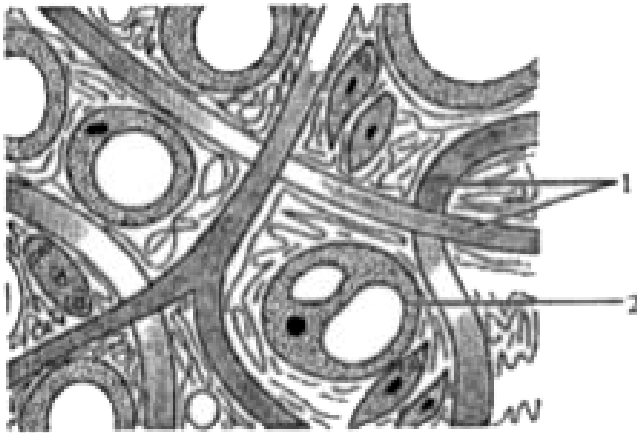


Name the rounded cells filled with fat.



[Watch Video Solution](#)

20. Study the diagram and answer the questions that follow :

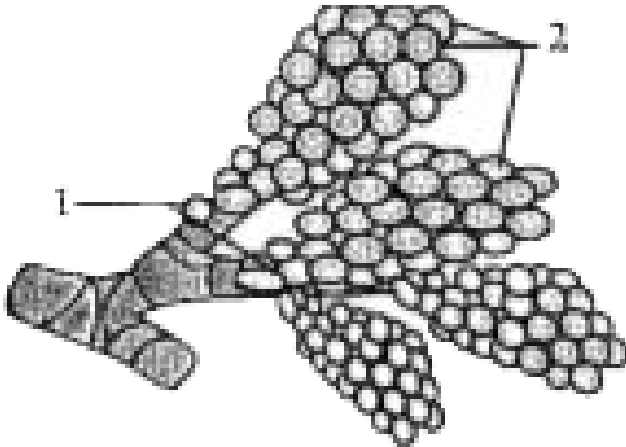


How this structure helpful in conserving body heat ?



[Watch Video Solution](#)

21. Study the diagram given below and answer the questions that follow:

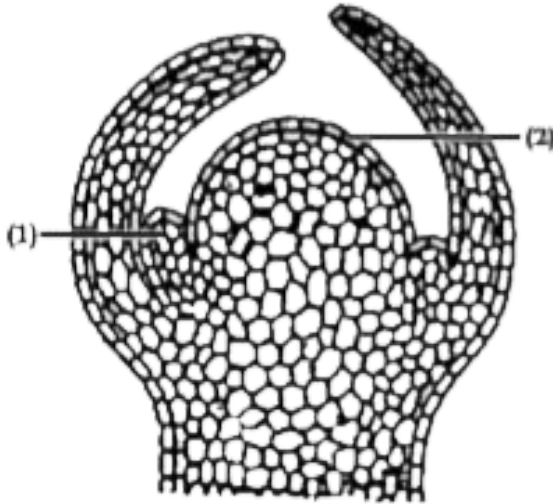


Identify the above structure and mention its location



Watch Video Solution

22. Study the diagram given below and answer the questions that follow :



Label the parts numbered 1 and 2.



Watch Video Solution

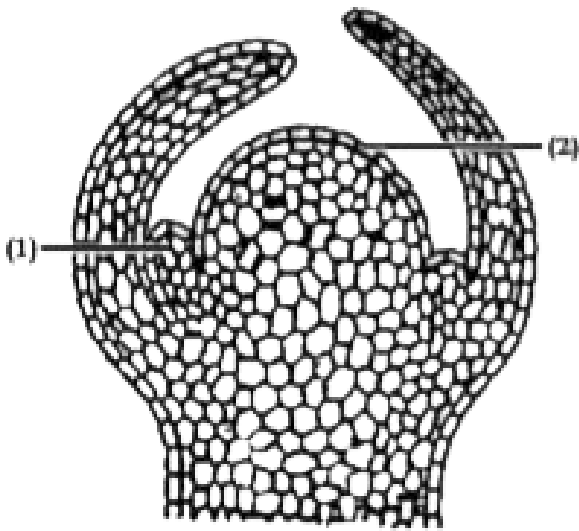
23. Study the diagram given below and answer the questions that follow :



What do you call the cytoplasm of this structure?

 [View Text Solution](#)

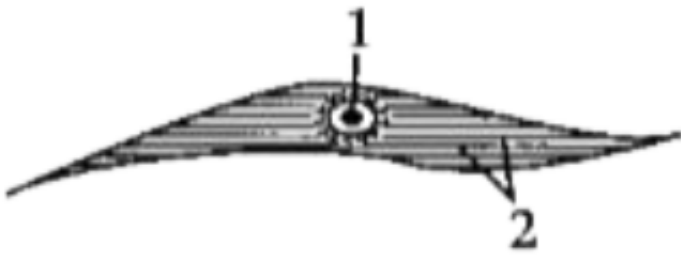
24. Study the diagram given below and answer the questions that follow :



Which tissue is found in this structure?

 [Watch Video Solution](#)

25. Study the diagram given below and answer the questions that follow :



Draw a neat, labelled diagram of a striated muscle.

 [View Text Solution](#)

26. Study the diagram given below and answer the questions that follow :



Identify the above structure and mention its location in a human



[View Text Solution](#)

27. Study the diagram given below and answer the questions that follow :



Label the parts numbered 1 and 2.



[Watch Video Solution](#)

28. Study the diagram given below and answer the questions that follow :



Name the substance responsible for hardening of the bones.



View Text Solution

29. Study the diagram given below and answer the questions that follow :

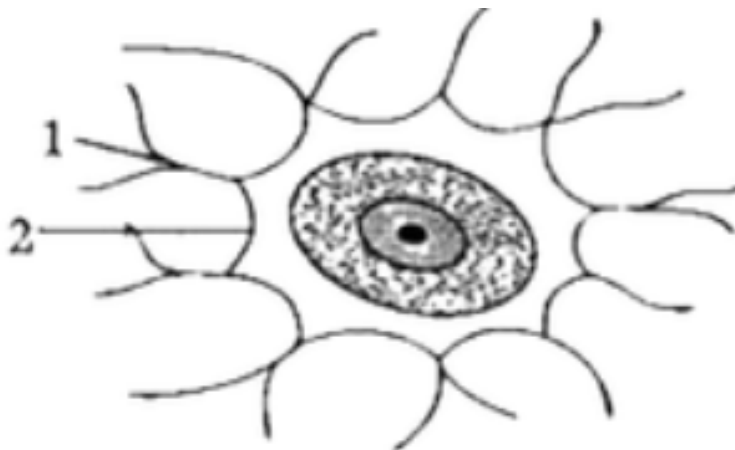


Name the calcified matrix containing bone cells.



[View Text Solution](#)

30. Study the diagram given below and answer the questions that follow :



Draw a neat, labelled diagram of a cartilage



[View Text Solution](#)

31. Study the diagram given below and answer the questions that follow :



Identify the above structure and mention its location in the human body.



[Watch Video Solution](#)

32. Study the diagram given below and answer the questions that follow :



Label the parts numbered 1 and 2.



Watch Video Solution

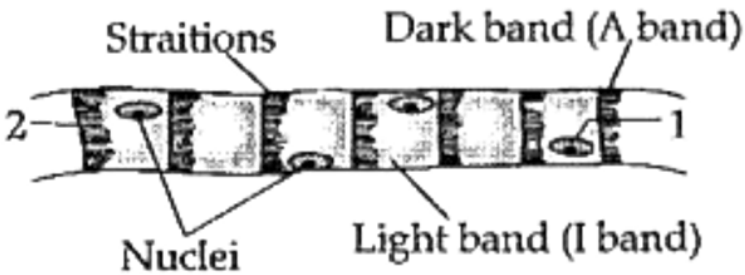
33. Study the diagram given below and answer the questions that follow :



Name the organ where this structure is found.



34. Study the diagram given below and answer the questions that follow :



Name the cell membrane which binds muscle fibres.

35. Study the diagram given below and answer the questions that follow :

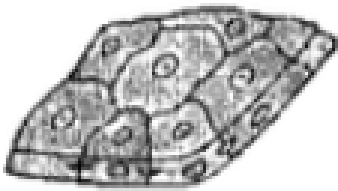


Draw a neat, labelled diagram of an unstriated muscle.

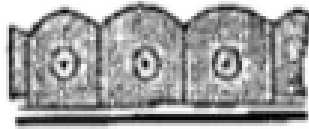


Watch Video Solution

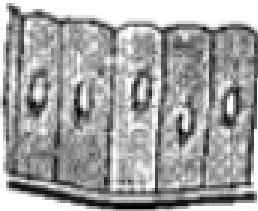
36. Given below are different types of epithelial tissues. Study the same and answer the questions given below:



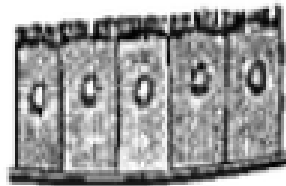
A



B



C



D

Name the structures labelled as A, B, C, and D.



[Watch Video Solution](#)

37. Given below are different types of epithelial tissues. Study the same and answer the questions given below:



State the function of structure .A..

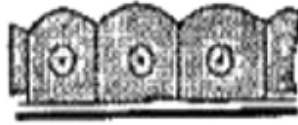


[View Text Solution](#)

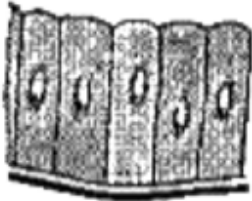
38. Given below are different types of epithelial tissues. Study the same and answer the questions given below:



A



B



C



D

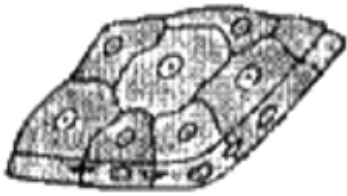
Name the structure found in the nephron and in the lining of the salivary duct.



[Watch Video Solution](#)

39. Given below are different types of epithelial tissues. Study the same and answer

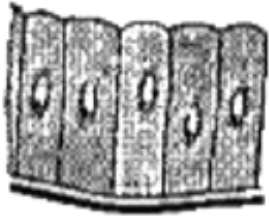
the questions given below:



A



B



C



D

The protoplasmic extensions of the cell that are present in structure .D..



Watch Video Solution

40. Given below are different types of epithelial tissues. Study the same and answer the questions given below:



A



B



C



D

Draw a neat, labelled diagram of columnar ciliated epithelium.



Watch Video Solution

