



BIOLOGY

BOOKS - NAVNEET PUBLICATION

LIFE PROCESSES IN LIVING ORGANISMS

Examples

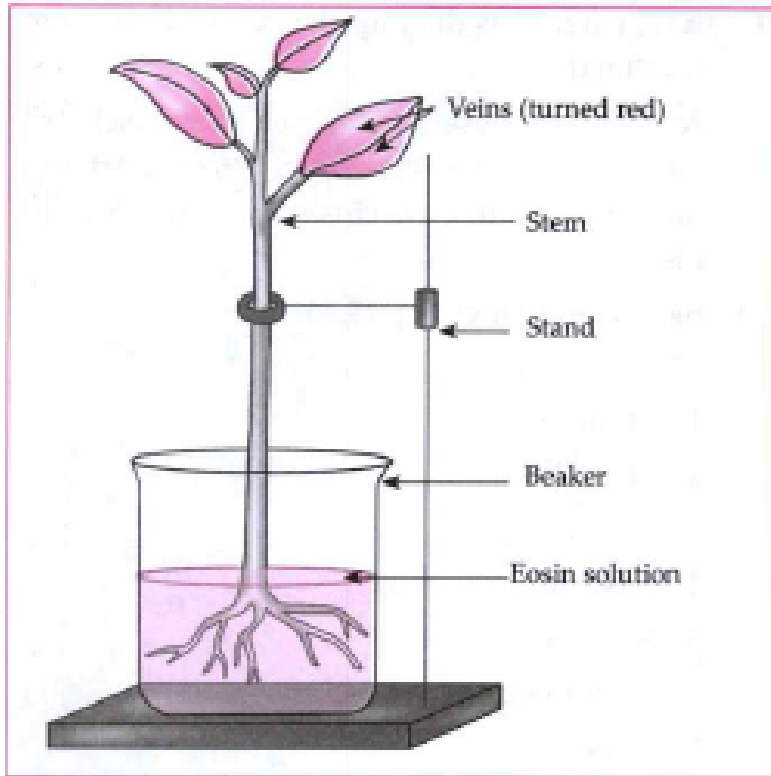
1. How do the digestive system and respiratory system work ?



Watch Video Solution

2. Take a small plant like balsam or tuberose with its roots intact. Wash and clean its roots. As whond in the fig, keep it in the water containing a stain like safranin or eosin. Observe the stem and the veins of the leaves

after 2-3 hours.



Watch Video Solution

3. Why does this happen?

Fruits, flowers fall off after a certain period of time.



[Watch Video Solution](#)

4. Why does this happen?

Substances like resin, gum, etc. are given out of the plant body.



[Watch Video Solution](#)

5. Which waste products are produced in our body through metabolic activities?



Watch Video Solution

6. How does the process of excretion take place in humans?



Watch Video Solution

7. Which are the sensory organs of an organism? What is their function?



[Watch Video Solution](#)

8. Where are the gustatory and olfactory nerves to be found?



[Watch Video Solution](#)

Exercise

1. Choose the correct alternative and write it along with its allotted alphabet:

By the process ofa substance either synthesized or absorbed in one part of the body reaches another.

A. transportation

B. transcription

C. translation

D. transduction

Answer: A



Watch Video Solution

2. Choose the correct alternative and write it along with its allotted alphabet:

All parts of the plant are connected with thetissues.

A. epithelial

B. connective

C. conducting

D. nervous

Answer: C



Watch Video Solution

3. Choose the correct alternative and write it along with its allotted alphabet:

.....cells control the opening and closing of stamata.

A. stomatal

B. Guard

C. Protective

D. Security

Answer: B



Watch Video Solution

4. Choose the correct alternative and write it along with its allotted alphabet:

Waste materials present in the form of crystals of calcium oxalate are called.....

A. graphides

B. oxalates

C. crystallates

D. raphides

Answer: D



Watch Video Solution

5. Choose the correct alternative and write it along with its allotted alphabet:

The functional unit of the kidney that

performs the basic function of filtration is called a.....

A. nephron

B. neuron

C. cyton

D. excron

Answer: A



Watch Video Solution

6. Choose the correct alternative and write it along with its allotted alphabet:

The network of capillaries in Bowman's capsule is called a.....

A. Malpighian body

B. Cup

C. Henle's loop

D. glomerulus

Answer: D



Watch Video Solution

7. Choose the correct alternative and write it along with its allotted alphabet:

Proper coordination between various systems of an organism helps to maintain a state of equilibrium called.....

A. homeostasis

B. statism

C. balance

D. perfection

Answer: A



Watch Video Solution

8. Choose the correct alternative and write it along with its allotted alphabet:

The..... Of any plant shows positive phototropic movement.

- A. root system
- B. shoot system
- C. tissue system

D. conducting tissues

Answer: B



Watch Video Solution

9. Choose the correct alternative and write it along with its allotted alphabet:

There is minute space between two adjacent neurons which is called the

A. synapse

B. synopsis

C. synergy

D. spacing

Answer: A



Watch Video Solution

10. Choose the correct alternative and write it along with its allotted alphabet:

The long tubular cavity of the spinal cord is called the ...canal.

A. spinal

B. nerve

C. central

D. middle

Answer: C



Watch Video Solution

11. Choose the correct alternative and write it along with its allotted alphabet:

..... supplies nutrients to the central nervous system and protects it from shock.

- A. blood cells
- B. cerebrospinal fluid
- C. muscular system
- D. Lymphatic circulation

Answer: B



Watch Video Solution

12. Choose the correct alternative and write it along with its allotted alphabet:

The.....continues downwards as the spinal cord.

A. cerebral hemispheres

B. medulla oblongata

C. corpora quadrigemina

D. crura cerebri

Answer: B



Watch Video Solution

13. Choose the correct alternative and write it along with its allotted alphabet:

.....glands along with the nervous system are responsible for the control and coordinate in our body.

A. sweat

B. endocrine

C. blood

D. exocrine

Answer: C



Watch Video Solution

14. Choose the correct alternative and write it along with its allotted alphabet:

.....contracts uterus during parturition.

A. ADH

B. Vassopressin

C. Oxytocin

D. Thyroxine

Answer: C



Watch Video Solution

15. Choose the correct alternative and write it along with its allotted alphabet:

.....maintains balance of Na^+ and k^+ and stimulates metabolism.

A. Insulin

B. Thyroxin

C. Glucagon

D. Corticosteroid

Answer: D



Watch Video Solution

16. State whether the following statements are

True or false:

Water and minerals enter the cells on the root surface due to differences in concentration.



Watch Video Solution

17. State whether the following statements are

True or false:

In the process of transportaion, excess food, except amino acids, is stored in roots, fruits and seeds.



Watch Video Solution

18. State whether the following statements are

True or false:

Latex of rubber is useful substance for the plants.



[Watch Video Solution](#)

19. State whether the following statements are

True or false:

Kidneys in the human beings is the only excretory organ in the body.



[Watch Video Solution](#)

20. State whether the following statements

are True or false:

The right kidney is on the upper side than the left kidney.



[Watch Video Solution](#)

21. State whether the following statements are

True or false:

Movement shown by plants in response to specific chemicals is called Gravitropic movement.



[Watch Video Solution](#)

22. State whether the following statements are True or false:

Flower of Tuberose opens in the morning while the lotus opens at night.



Watch Video Solution

23. State whether the following statements are True or false:

Control of voluntary movements is done by cerebrum.



Watch Video Solution

24. State whether the following statements are True or false:

There are 12 pairs of cranial nerves and 31 pairs of spinal nerves.



Watch Video Solution

25. State whether the following statements are True or false:

Beta cells in pancreas are same as F cells.



Watch Video Solution

26. Match the pairs and explain :

| Column 'A' | Column 'B' |
|---|----------------------------------|
| (1) Growth of pollen tube towards ovule | (a) Gravitropic movement |
| (2) Growth of shoot system | (b) Chemotropic movement |
| (3) Growth of root system | (c) Phototropic movement |
| (4) Growth towards water | (d) Growth - irrelevant movement |
| | (e) Hydrotropic movement |



Watch Video Solution

27. Match the pairs and explain :

| Plant hormones | Function |
|------------------|---------------------------|
| (1) Auxin | (A) Retardation of growth |
| (2) Gibberellins | (B) Cell division |
| | (C) Enlargement of cells |
| | (D) Stem elongation |



Watch Video Solution

28. Match the pairs and explain :

| Cells | Percentage | Hormones |
|-------------|------------|------------------------|
| Alpha cells | 5% | Pancreatic polypeptide |
| Beta cells | 5% | Somatostatin |
| Delta cells | 20% | Insulin |
| P.P. cells | 70% | Glucagon |



29. The milk was on the stove. Resika was engrossed watching television. She smelled something burning. She ran towards the kitchen. The milk was boiling over. She held the vessel with her bare hands but, screaming, she let it go at once. This activity was controlled bycells. Special ends ofin these cells collected the information, from where it was transferred to the..... and then towards the terminal end of the The chemicals

produced at the terminal end passed through the minute space i.e. In this way, were conducted in the body and the process ofwas completed by conducting the impulses from.....to.....

(Nerve, muscle cell, impulse, dendrite, synapse, impulses, reflex action, cell body)



[Watch Video Solution](#)

30. Name the following :

The neurons that performs the function of

integration in the nervous system.



Watch Video Solution

31. Name the following :

The part of the brain that occupies two thirds of the area.



Watch Video Solution

32. Name the following :

The thread-like fibrous structure at the end of

the spinal cord.



Watch Video Solution

33. Name the following :

Centre of coordination of reflex actions.



Watch Video Solution

34. Name the following :

Parts of the brain that controls the pituitary gland.



[Watch Video Solution](#)

35. Name the following :

Hormone of parathyroid gland.



[Watch Video Solution](#)

36. Name the following :

Hormone of pancreas.



[Watch Video Solution](#)

37. Name the following :

Endocrine gland in the thoracic cage.



Watch Video Solution

38. Name the following :

Four endocrine cells in the pancreas.



Watch Video Solution

39. Name the following :

Controlling centre of involuntary activities.



Watch Video Solution

40. Name the following :

Three parts of nervous system.



Watch Video Solution

41. Name the following :

Parts of excretory system in human beings.



Watch Video Solution

42. Name the following :

Plants hormone secreted at shoot system.



Watch Video Solution

43. Name the following :

Hormone controlling metabolism of calcium and phosphorus.



Watch Video Solution

44. Name the following :

Hormone maintaining pregnancy.



Watch Video Solution

45. Distinguish between the following :

Excretory system of humans and plants.



Watch Video Solution

46. Distinguish between:

Nervous control and Chemical control



Watch Video Solution

47. Distinguish between cerebrum and cerebellum.



Watch Video Solution

48. Name the hormones of the following endocrine glands and the function of each:

Pituitary:



Watch Video Solution

49. Name the hormones of the following endocrine glands and the function of each:

Thyroid



Watch Video Solution

50. Name the hormones of the following endocrine glands and the function of each:

Adrenal



Watch Video Solution

51. Name the hormones of the following endocrine glands and the function of each:

Thymus



Watch Video Solution

52. Name the hormones of the following endocrine glands and the function of each:

Testis



Watch Video Solution

53. Name the hormones of the following endocrine glands and the function of each:

Ovary



Watch Video Solution

54. Define the following:

Transportation



Watch Video Solution

55. Define the following :

Translocation



Watch Video Solution

56. Give meanings of the following terms:

Bowman's capsule



Watch Video Solution

57. Give meanings of the following terms:

Haemodialysis



Watch Video Solution

58. Explain co-ordinatin is plants with the help of suitable examples.



Watch Video Solution

59. Answer the following:

Give some examples of growth irrelevant movements.



Watch Video Solution

60. Answer the following:

When and how is haemodialysis done?

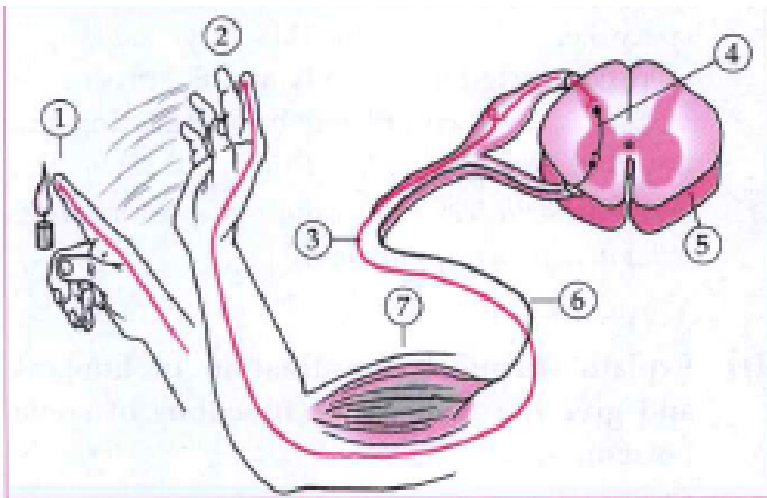


Watch Video Solution

61. What are the functions of nervous system?

 [Watch Video Solution](#)

62. Observe the figures carefully and as per the numbers in that figure, answer the following question.



At 6, which nerve is conducting the response impulse?



[Watch Video Solution](#)

63. What are histones? What are their functions?



[Watch Video Solution](#)

64. Answer the following:

Classify the functions given below into those

of left side of the brain and those of the right side of the brain.

Analytical thinking, Holistic thinking, Intuition, creativity, language, science and mathematics, art and music.



[Watch Video Solution](#)

65. You may have seen how a drunken person struggles to maintain his body balance. An excess of alcohol in the body causes one to

lose control over it. Why does this happen?

Find out the reason with help of the internet.



Watch Video Solution

66. Explain chemical co-ordination in humans and give the names and functions of some hormones.



Watch Video Solution

67. Explain in your own words with suitable examples:

What is meant by coordination?



Watch Video Solution

68. What is homeostasis?



Watch Video Solution

69. How does excretion occur in human being?



[Watch Video Solution](#)

70. Answer the following questions :

Describe the formation of nitrogen molecule ?



[Watch Video Solution](#)

71. How is excretion in plants useful to human beings?



[Watch Video Solution](#)

72. Describe the transportation system in plants.



Watch Video Solution

73. Give the scientific reasons:

All the plants parts are connected with the conducting tissues.



Watch Video Solution

74. Give the scientific reasons:

The cells around the stomata are called guard cells.



Watch Video Solution

75. Give the scientific reasons:

Dialysis is done if the kidneys are not functioning well.



Watch Video Solution

76. Give the scientific reasons:

There should not be a randomness in any step of reactions in human body.



Watch Video Solution

77. Give the scientific reasons:

Chemotropism is called growth relevant movement.



Watch Video Solution

78. Give the scientific reasons:

Muscle cells become able to response to electrical impulses of nerves.



Watch Video Solution

79. Write short note on Root pressure.



Watch Video Solution

80. Write short notes:

Transpiration



Watch Video Solution

81. Write short a note on: Translation .



Watch Video Solution

82. Write short note on Neuron.



Watch Video Solution

83. Write short note on : Human Brain



Watch Video Solution

84. Write short notes:

Reflex action



Watch Video Solution

85. Write short notes:

Spinal cord



Watch Video Solution

86. Why do we eat fruits and vegetables? Do the plants also need minerals like we do?



Watch Video Solution

87. From where do plants get inorganic substances other than carbon dioxide and oxygen?



Watch Video Solution

88. Use your brain power

Which type of plant tissues are xylem and phloem?



Watch Video Solution

89. Use your brain power

At least a small quantity of garbage or waste is produced every day in each house. What will happen if you keep this garbage for many days in your house?





[Watch Video Solution](#)

90. Observe your mother while she elephant's foot (Amorphophallus) or arum leaves. Your hands may also begin to itch if you try to cut these leaves. Why does this happen? Try to find out. Ask your mother what she does to prevent the itching.



[Watch Video Solution](#)

91. As compared to the monsoons and winter a very small quantity of urine is produced in the summer season. Why is it so?



Watch Video Solution

92. In adults, the process of urination is under their control but not in infants. Why is it so?



Watch Video Solution

93. Sometimes, while eating we bite our own finger or tongue by mistake.



Watch Video Solution

94. Sometimes, we choke while eating in a hurry.



Watch Video Solution

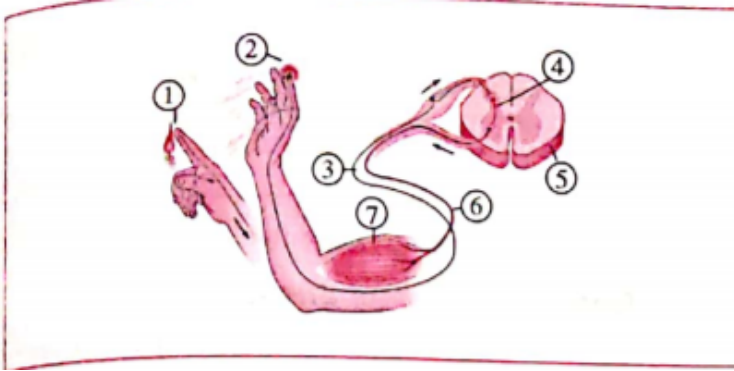
95. Use your brain power

An injury to the medulla oblongata can lead to death. Why?



Watch Video Solution

96. Observe the figure given below carefully and as per the number in that figure answer the following questions:

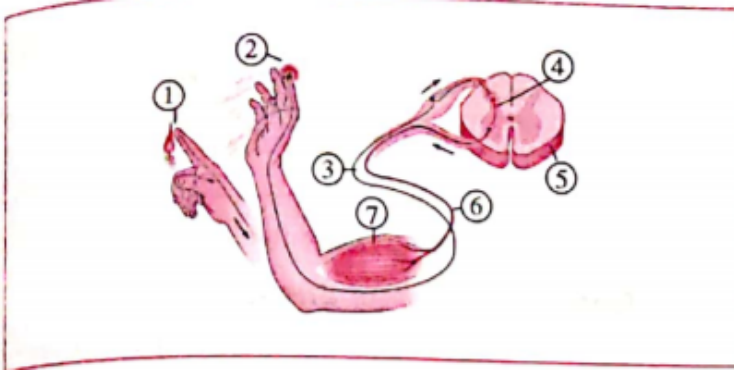


What is happening at 1 and 2?



Watch Video Solution

97. Observe the figure given below carefully and as per the number in that figure answer the following questions:

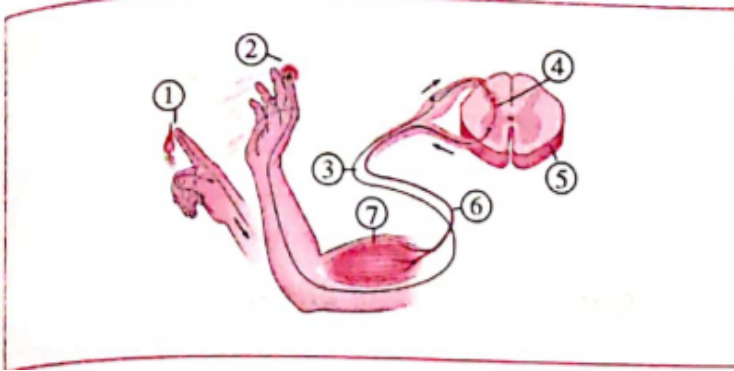


Which nerve carried the impulse to the point marked 3? In which direction is it conducting the impulse?



[Watch Video Solution](#)

98. Observe the figure given below carefully and as per the number in that figure answer the following questions:

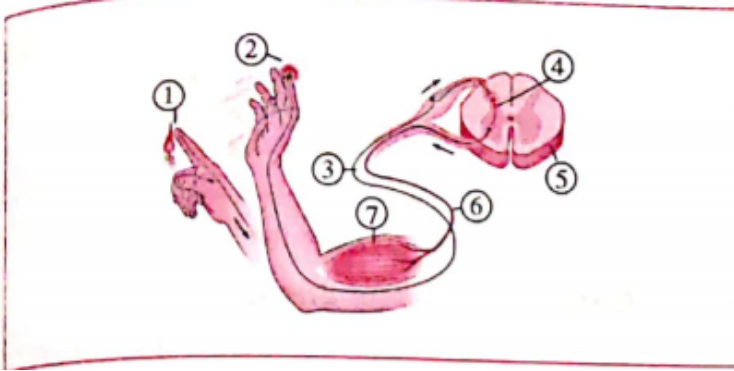


Which is the nerve shown by 4?



Watch Video Solution

99. Observe the figure given below carefully and as per the number in that figure answer the following questions:

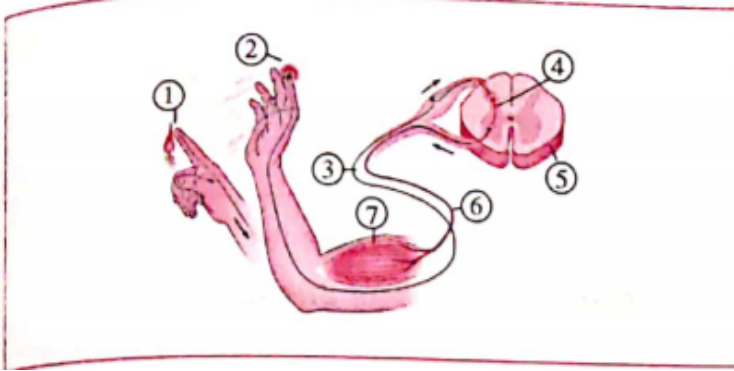


Which is the organ marked as 5?



Watch Video Solution

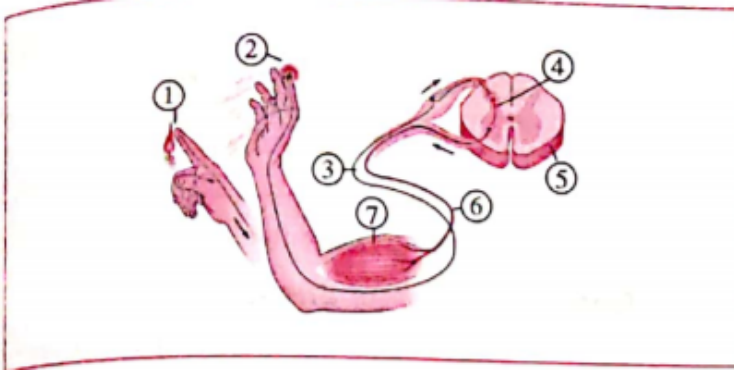
100. Observe the figure given below carefully and as per the number in that figure answer the following questions:



At 6, which nerve is conducting the response impulse?

 [Watch Video Solution](#)

101. Observe the figure given below carefully and as per the number in that figure answer the following questions:



At 7, where has the impulse reached? What is its effect?

[Watch Video Solution](#)

102. Draw neat and labelled diagram:

Human excretory system

[Watch Video Solution](#)

103. Draw neat and labelled diagram:

Nephron



Watch Video Solution

104. Draw neat and labelled diagram:

Vertical Section of Kidney



Watch Video Solution

105. Draw well-labelled and neat diagram of Dialysis of blood.



Watch Video Solution

106. Draw a neat labelled diagram of.

L.S. of human brain



Watch Video Solution

107. Draw a neat labelled diagrams of.

Multipolar neuron



Watch Video Solution

108. Draw well-labelled and neat diagram of

Neuron-muscular junction.



Watch Video Solution

109. Draw well-labelled and neat diagram of Dialysis of blood.



Watch Video Solution