



# BIOLOGY

## BOOKS - TARGET PUBLICATION

### LIFE PROCESSES IN LIVING ORGANISMS

#### Exercise

1. Choose the correct alternative

Due to the effect of root pressure, water and

minerals reach \_\_\_\_\_ of the roots.

A. phloem

B. root cells

C. xylem

D. vacuole

**Answer: C**



**Watch Video Solution**

2. Structural and functional unit of kidney is called as

A. nephron

B. neuron

C. neuroglia

D. Nodes of Ranvier

**Answer: A**



**Watch Video Solution**

### 3. Choose the correct alternative

Urine is store in \_\_\_\_\_ before it is released out of the body.

- A. glomerulus
- B. urethra
- C. ureters
- D. urinary bladder

**Answer: D**



**Watch Video Solution**

#### 4. Choose the correct alternative

In the shoot system of plants \_\_\_\_\_ hormone if found.

A. Abscisic acid

B. Gibberellins

C. Auxin

D. Cytokinins

**Answer: C**



**Watch Video Solution**

5. Choose the correct alternative

wilting of leaves occurs due to

A. auxins

B. Gibberellins

C. abscisic acid

D. cytokinins

**Answer: C**



**Watch Video Solution**

## 6. Choose the correct alternative

The largest part of the brain is

A. pons

B. cerebellum

C. cerebrum

D. medulla oblongata

**Answer: C**



**Watch Video Solution**

7. Choose the correct alternative

Luteinizing hormone \_\_\_\_\_

- A. controls menstrual cycle and ovulation
- B. controls insulin and glucagon levels
- C. maintains balance of  $Na^+$  and  $K^+$
- D. stimulates growth of bones

**Answer: A**



**Watch Video Solution**



8. Choose the correct alternative

\_\_\_\_\_ stimulates liver to convert glycogen into glucose.

A. Insuline

B. Corticosteroid

C. Glucagon

D. Somatostain

**Answer: C**



**Watch Video Solution**

9. Choose the correct alternative

\_\_\_\_\_controls insulin glucagon levels.

- A. calcitonin
- B. somatostatin
- C. Corticosteroid
- D. Parathormone

**Answer: B**



**Watch Video Solution**

**10.** Choose the correct alternative

Pancreatic polypeptide is responsible for

- A. Controlling movements of intestine
- B. pancreatic juice secretion
- C. Growth of gonads
- D. Both A and B

**Answer: D**



**Watch Video Solution**

11. The milk was on the stove. Resika was engrossed watching television. She smelled something burning. She ran towards the kitchen. The milk was boiling over. She held the vessel with her bare hands but, screaming, she let it go at once. This activity was controlled by .....cells. Special ends of .....in these cells collected the information, from where it was transferred to the..... and then towards the terminal end of the ..... . The chemicals produced at the terminal end passed through the minute space i.e. .... . In this way, ..... were conducted in the body and the

process of .....was completed by conducting  
the impulses from.....to.....

(Nerve, muscle cell, impulse, dendrite, synapse,  
impulses, reflex action, cell body)



**Watch Video Solution**

**12.** Select the appropriate options and  
complete the following paragraph.

(amino acids, fruits, translocation of materials.  
phloem, sclerites, leaves, xylem, transpiration)

The food produced in \_\_\_\_\_ is transported to

each cell in the plant body. Excess food. except \_\_\_\_\_ is stored in roots, and \_\_\_\_\_. This process is called \_\_\_\_\_. It is carried out in both the upward and the downward directions by the \_\_\_\_\_.



[Watch Video Solution](#)

**13.** Name the following

The process in which plants release water into the atmosphere in the form of vapors.



[Watch Video Solution](#)

**14.** Name the following

The growth of any part of the plant in response to an external stimulus



**Watch Video Solution**

**15.** Name the following

Two bean-shaped organs located on either side of vertebral column, on the posterior side of abdomen in human.



**Watch Video Solution**

**16.** Name the following

The main controlling part of the nervous system.



**Watch Video Solution**

**17.** Name the following

The protective layers present in the space between the delicate central nervous system and its bony covering.





[Watch Video Solution](#)

**18.** Name the following

The Part of the brain concerned with intelligence and intellectual activities.



[Watch Video Solution](#)

**19.** True or False

If False, write the correct sentence

Guard cells control the opening and closing of stomata.



[Watch Video Solution](#)

## 20. True or False

If False, write the correct sentence

Root pressure is sufficient to lift the water up in shrubs, small plants and small trees.



[Watch Video Solution](#)

## 21. True or False

If False, write the correct sentence

In plants, the process of translocation of material requires energy, which is obtained from ATP.



[Watch Video Solution](#)

**22. True or False**

If False, write the correct sentence

Tendrils of climbers are sensitive to touch.



[Watch Video Solution](#)

**23. True or False**

If False, write the correct sentence

The movement of plant in response to gravity is called hydrotropic movement.



**Watch Video Solution**

**24. True or False**

If False, write the correct sentence

The movements shown by Venus fly trap while

trapping an insect are considered as growth relevant movements.



[Watch Video Solution](#)

## 25. True or False

If False, write the correct sentence

Unicellular animals like Amoeba have a nervous system which produces impulses and responses.



[Watch Video Solution](#)

## 26. True or False

If False, write the correct sentence

The right side of the brain controls speech and logical thinking.



[Watch Video Solution](#)

## 27. True or False

If False, write the correct sentence

Spinal cord is protected by the vertebral column.



[Watch Video Solution](#)

**28. True or False**

If False, write the correct sentence

Filum terminale is a thread-like fibrous structure at the end of spinal cord.



**Watch Video Solution**

**29. True or False**

If False, write the correct sentence

The nerves originating from the brain are called spinal nerves.



[Watch Video Solution](#)

**30.** True or False

If False, write the correct sentence

Endocrine glands along with the nervous system are responsible for the control and coordination in our body



[Watch Video Solution](#)



### 31. True or False

If False, write the correct sentence

Oxytocin plays significant role in regulating water level in the body.



[Watch Video Solution](#)

### 32. True or False

If False, write the correct sentence

Parathormone controls calcium and Phosphorus metabolism.



[Watch Video Solution](#)

### 33. True or False

If False, write the correct sentence

The blood glucose level is controlled by the insulin hormone produced by hypothalamus.



[Watch Video Solution](#)

### 34. Odd one Out

Prolactin, oxytocin, gibberellin, thymosin



[Watch Video Solution](#)

### 35. Odd one Out

Medulla oblongata, nephron, cerebrum,  
cerebellum



[Watch Video Solution](#)

### 36. Odd one Out

Urea, uric acid, resin, creatinine



[Watch Video Solution](#)

### 37. Odd one Out

Pineal gland, adrenal gland, Pituitary gland,  
liver



[Watch Video Solution](#)

### 38. Odd one Out

pancreatic juice, Nor-adrenaline, FSH, LH



[Watch Video Solution](#)

### 39. Complete the analogy

Transpiration , Stomata :: Translocation of materials : \_\_\_\_\_



[Watch Video Solution](#)

### 40. Complete the analogy

Conduction of impulses from sensory organs to the brain and the spinal cord : Sensory neurons :: Conduction of impulses from brain or spinal cord to effector organs : \_\_\_\_\_





[Watch Video Solution](#)

**41. Complete the analogy**

Cranial nerves : 12 pairs :: Spinal nerves : \_\_\_\_\_



[Watch Video Solution](#)

**42. Complete the analogy**

Control of voluntary movements : Cerebrum ::

Control of involuntary activities : \_\_\_\_\_



[Watch Video Solution](#)

43. Complete the analogy

Ovary : Oestrogen :: \_\_\_\_\_ : Testosterone



Watch Video Solution

44. Match the following

Match the functions given in Group A with hormones in Group B.

	Group 'A' (Functions)		Group 'B' (Hormones)
i.	Enlargement of shoot cells	a.	Absciscic acid
ii.	Stem elongation	b.	Gibberellin
iii.	Cell division	c.	Auxin
iv.	Leaf wilting	d.	Cytokinin



Watch Video Solution

## 45. Match the following

Match the pairs

	Group 'A'		Group 'B'
i.	Cerebrum	a.	Control of involuntary activities
ii.	Cerebellum	b.	Decision-making and memory
iii.	Medulla oblongata	c.	Centre of co-ordination of reflex actions
iv.	Spinal cord	d.	Maintaining body's balance



[Watch Video Solution](#)

## 46. Match the following

Match Group A (Glands) with Group B



(location ) and Group C (Hormones).

	Group 'A'		Group 'B'		Group 'C'
i.	Testis	a.	Either side of uterus in women	p.	Parathormone
ii.	Ovary	b.	Behind the stomach	q.	Somatostatin
iii.	Parathyroid	c.	In scrotum	r.	Oestrogen
iv.	Pancreas	d.	Behind thyroid gland	s.	Testosterone



[Watch Video Solution](#)

47. Answer the following

Which hormone responsible for enlargement of cells in shoot in plants?



[Watch Video Solution](#)

**48.** Answer the following

Which types of role of plant tissues xylem and phloem?



**Watch Video Solution**

**49.** Answer the following

Describe the translocation in plants.



**Watch Video Solution**

**50.** Answer the following

How does excretion occur in unicellular organisms?



**Watch Video Solution**

**51.** Answer the following

What are raphides?



**Watch Video Solution**

**52.** Answer the following

What are excretory products of plants useful to human beings?



**Watch Video Solution**

**53.** Answer the following

Define excretion.



**Watch Video Solution**

**54.** Answer the following

Which excretory organ is responsible for excretion of nitrogenous waste in humans?



**Watch Video Solution**

**55.** How does excretion occur in human being?



**Watch Video Solution**

**56.** As compared to the monsoons and winter a very small quantity of urine is produced in the summer season. Why is it so?



**Watch Video Solution**

**57.** In adults, the process of urination is under their control but not in infants. Why is it so?



**Watch Video Solution**

**58.** What is meant by co-ordination?



**Watch Video Solution**

**59.** Answer the following

Write a short note on coordination.



**Watch Video Solution**

**60.** Explain co-ordination in plants with the help of suitable examples.



[Watch Video Solution](#)

**61.** Answer the following

Define geotropic movement



[Watch Video Solution](#)

**62.** Answer the following

Define Phototropic movement



[Watch Video Solution](#)



**63.** Answer the following

Define Gravitropic Movement with example



**Watch Video Solution**

**64.** Answer the following

Define Hydrotropic movement



**Watch Video Solution**

**65.** Answer the following

Define Chemotropic movement



**Watch Video Solution**

**66.** Answer the following

Which types of movements are observed in plants?



**Watch Video Solution**

**67.** Answer the following

In reflex action, which parts of the nervous system are involved?



**Watch Video Solution**

**68.** Describe the conduction of nerve impulse in the neuron.



**Watch Video Solution**

**69.** Answer the following

Explain the types of neuron based on their function.



**Watch Video Solution**

**70.** Which gland is same in male and female reproductive system?



**Watch Video Solution**

**71.** Explain chemical co-ordination in humans and give the names and functions of some hormones.



**Watch Video Solution**

**72.** Name the hormones of the following endocrine glands and the function of each:

Pituitary:



**Watch Video Solution**

**73.** Name the hormones of the following endocrine glands and the function of each:

Thyroid



**Watch Video Solution**

**74.** Name the hormones of the following endocrine glands and the function of each:

Adrenal



**Watch Video Solution**

**75.** Name the hormones of the following endocrine glands and the function of each:

Thymus



**Watch Video Solution**

**76.** Name the hormones of the following endocrine glands and the function of each:

Testis



**Watch Video Solution**

**77.** Name the hormones of the following endocrine glands and the function of each:

Ovary



**Watch Video Solution**

**78.** Write short note on Root pressure.



**Watch Video Solution**



**79.** Write short notes:

Transpiration



**Watch Video Solution**

**80.** Choose the correct alternative.

\_\_\_\_\_ is the hind-most Part of the brain.

A. Pons

B. Medulla oblongata

C. Cerebellum

D. Cerebrum

**Answer:**



**Watch Video Solution**

**81.** Choose the correct alternative.

Which of the following hormone is involved in retardation of growth?

A. Gibberellin

B. Auxin

C. Cytokinin

D. Abscisic acid

**Answer:**



**Watch Video Solution**

**82.** Choose the correct alternative.

Maximum reabsorption of water takes place in

A. proximal convoluted tubules

B. distal convoluted tubules .

C. glomerulus

D. collecting ducts

**Answer:**



**Watch Video Solution**

**83.** Choose the correct alternative.

The growth of pollen grain towards the ovule is known as

A. Bravitropic movement

B. hydrotropic Movement

C. Phototropic movement

D. chemotropic Movement

**Answer:**



**Watch Video Solution**

**84.** State whether the following statement is True or False. If false write the correct statement. Oxytocin plays Significant role in regulating glucose level in the body.



[Watch Video Solution](#)

**85.** Complete the given analogy.

Cranial nerves : \_\_\_\_\_ :: Spinal nerves : 31  
Pairs



[Watch Video Solution](#)

**86.** Use your brain power

An injury to the medulla oblongata can lead to death. Why?



[Watch Video Solution](#)

**87.** Answer the following

Write any two hormones produced by following glands:

Ovary



[Watch Video Solution](#)

**88.** Answer the following

Write any two hormones produced by

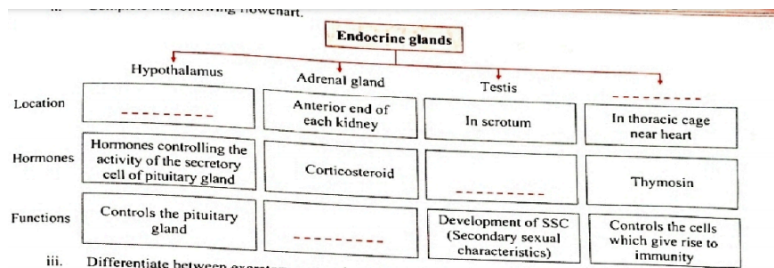
following glands:

Adrenal gland



Watch Video Solution

89. Complete the following flowchart



Watch Video Solution



**90.** Distinguish between the following :

Excretory system of humans and plants.



**Watch Video Solution**