



## BIOLOGY

### BOOKS - VGS PUBLICATION-BRILLIANT

### DIVERSITY IN LIVING ORGANISMS

#### Exercise

1. Variations lead to diversity in living organisms? State reasons.



**Watch Video Solution**

2. What was the basis of early classifications?



[Watch Video Solution](#)

3. What are the advantages of classifying organisms?



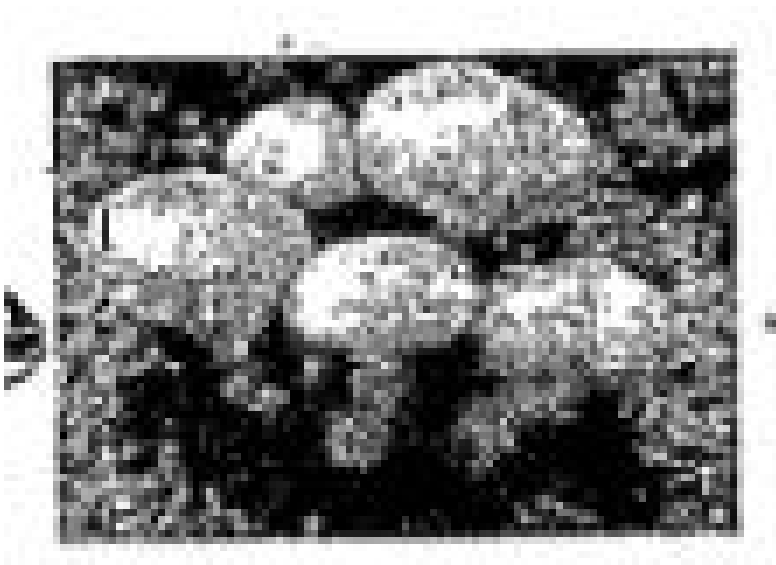
[Watch Video Solution](#)

4. How do monocots differ from dicots?



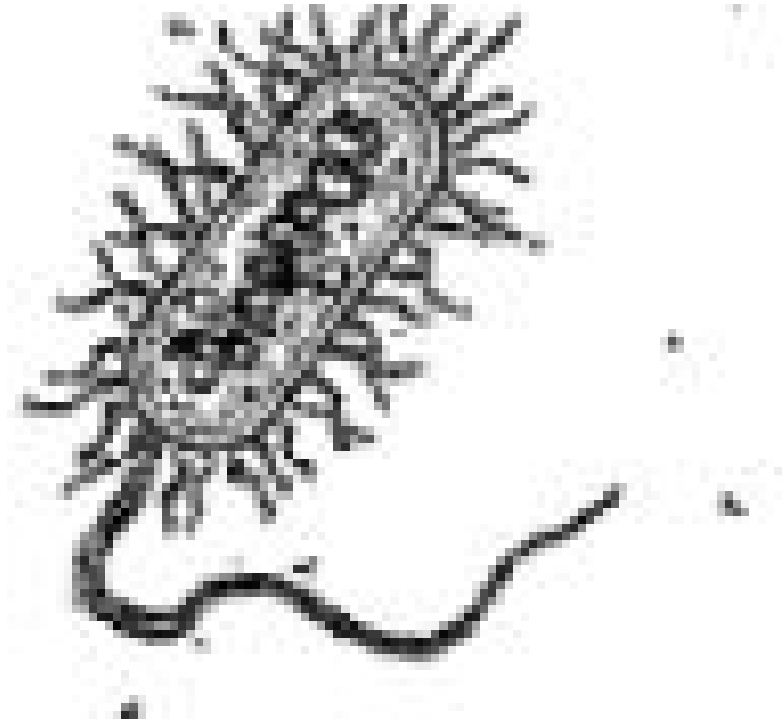
**Watch Video Solution**

5. Name the kingdom to which these organisms belong according to Whittaker?



**Watch Video Solution**

6. Name the kingdom to which these organisms belong according to Whittaker?



**Watch Video Solution**

7. Which phylum do I belong to

My body is made of pores. I live in water. I don't have back bone too.



**Watch Video Solution**

8. Which phylum do I belong to

I am an insect, I have jointed legs.



**Watch Video Solution**

**9.** Which phylum do I belong to

I am a marine living animal with spiny skin, my body is radially symmetrical.



**Watch Video Solution**

**10.** Write some common characters of pisces, reptilia and aves.



**Watch Video Solution**

**11.** Explain how animals in vertebrate are classified into further subgroups.



**Watch Video Solution**

**12.** What is the need of classification?



**Watch Video Solution**

**13.** Who made the classification?



**Watch Video Solution**

**14.** What are the advantage of classification?



**Watch Video Solution**

**15.** Make a flow chart of invertebrates in the kingdom Animalia , based upon their characteristic features ?



**Watch Video Solution**



**16.** Sujata says Bat is not a bird but a mammal.

How can you support Sujata's statement?



**Watch Video Solution**

**17.** What are the characteristic features of dicotyledons?



**Watch Video Solution**

**18.** What are the characteristic features of monocotyledons?



**Watch Video Solution**

**19.** What is a variation ?



**Watch Video Solution**

**20.** What are classification?



**Watch Video Solution**

21. What is the book written by Charles Darwin?  
?



[Watch Video Solution](#)

22. Linnaeus classified organisms into how many kingdoms? What are they?



[Watch Video Solution](#)

**23.** Earnest Haeckel (1866) classified organisms into how many kingdoms? What are they?



**Watch Video Solution**

**24.** Copeland (1938) classified organisms into how many kingdoms? What are they?



**Watch Video Solution**

**25.** Whittaker (1969) classified organisms into how many kingdoms? What are they?



**Watch Video Solution**

**26.** In binomial nomenclature



**Watch Video Solution**

**27.** Explain the hierarchy of classification.



**Watch Video Solution**

**28.** What are the different characteristics selected by Thomas Whittaker for classifying organisms?



**Watch Video Solution**

**29.** What is a species?



**Watch Video Solution**

**30.** What are the characteristics of monera?



**Watch Video Solution**

**31.** What are the 3 major groups of organisms under monera?



**Watch Video Solution**

**32.** What are the characteristics of protista?



**Watch Video Solution**

**33.** What are the special features of fungi?



**Watch Video Solution**

**34.** What are the criteria for classifying plants  
?



**Watch Video Solution**



**35.** What are the differences between spores and seeds?



**Watch Video Solution**

**36.** What are the general characters of animals?



**Watch Video Solution**

**37.** Which character is taken in to consideration for classifying animals?



**Watch Video Solution**

**38.** What are main characteristic features found in Poriferan animals?



**Watch Video Solution**

**39.** What are the characteristic features of Coelenterata animals?



**Watch Video Solution**

**40.** What are the main characteristic features of Platyhelminthes animals?



**Watch Video Solution**

**41.** What are the main characters present among Arthropodan animals?



**Watch Video Solution**

**42.** Write about molluscan animals.



**Watch Video Solution**

**43.** In Echinodermata



**Watch Video Solution**

**44.** How are vertebrates grouped?



**Watch Video Solution**

**45.** Write the characteristic features of amphibians.



**Watch Video Solution**

**46.** What are the specific characteristic features of reptiles?



**Watch Video Solution**

**47.** What are the basic characters found in birds?



**Watch Video Solution**

**48.** Write the characteristics of mammals.



[Watch Video Solution](#)

**49.** Into how many groups mammals are groups?



[Watch Video Solution](#)

**50.** What is the characteristic feature of marsupials?



[Watch Video Solution](#)

51. What is the characteristic feature of Rodents?



[Watch Video Solution](#)

52. What are bilaterally symmetrical animals?



[Watch Video Solution](#)

53. What are radially symmetrical animals?



[Watch Video Solution](#)



**54.** What are diploblastic animals?



**Watch Video Solution**

**55.** What are triploblastic animals?



**Watch Video Solution**

**56.** What are the specific characteristic features of Echinoderms?





[Watch Video Solution](#)

**57.** Sujata says Bat is not a bird but a mammal.

How can you support Sujata's statement?



[Watch Video Solution](#)

**58.** what questions will you ask for need of classification ?



[Watch Video Solution](#)

**59.** Do you know the common names of potato in different languages?



**Watch Video Solution**

**60.** What is bio-diversity?



**Watch Video Solution**

**61.** Who coined the term bio-diversity?



**Watch Video Solution**

**62.** What is the need for system of classification?



**Watch Video Solution**

**63.** What are variations?



**Watch Video Solution**

**64.** What is fauna?



**Watch Video Solution**

**65.** what is flora ?.



**Watch Video Solution**

**66.** Which are called viviparous animals?



**Watch Video Solution**

**67.** What is a notochord?



**Watch Video Solution**

**68.** Name the phylum that sponges belong to



**Watch Video Solution**

**69.** What are cotyledons?



**Watch Video Solution**

**70.** Name two mammals that lay eggs.



**Watch Video Solution**

71. Who wrote the book "Origin of Species"?



[Watch Video Solution](#)

72. Which division is called the amphibian of plant kingdom?



[Watch Video Solution](#)

73. What is evolution?



**Watch Video Solution**

**74.** Name two animals that live in water.



**Watch Video Solution**

**75.** The leaf venation you find in monocots is....



**Watch Video Solution**



**76.** How many cotyledons are present in the embryo of groundnut?



**Watch Video Solution**

**77.** Which type of root system do you find in monocot plants?



**Watch Video Solution**

**78.** What are the uses of Arthropod animals?



[Watch Video Solution](#)

**79.** Who wrote the book 'Vrikshayurveda' ?



[Watch Video Solution](#)

**80.** According to 5 kingdom classification, to which kingdom 'Paramecium' belongs?



[Watch Video Solution](#)

**81.** Organisms that do not have a membrane bound nucleus are called?



**Watch Video Solution**

**82.** Cell wall of bacteria is made of?



**Watch Video Solution**

**83.** give two examples of gymnosperms ?



**Watch Video Solution**

**84.** Which phylum does Octopus belong to?



**Watch Video Solution**

**85.** Name the phylum that Tapeworm belongs to.



**Watch Video Solution**

**86.** Name the phylum that Spider belongs to.



**Watch Video Solution**

**87.** Name the phylum that Hydra belongs to.



**Watch Video Solution**

**88.** Name the phylum Star Fish belongs to.



**Watch Video Solution**

**89.** Which plants have flowers as their reproductive organs?



**Watch Video Solution**

**90.** Who proposed five Kingdom classification ?

How many Kingdoms of this classification contain eukaryotes



**Watch Video Solution**

**91.** Name two bryophytes of Plantae.



**Watch Video Solution**

**92.** Phanerogams bearing naked seeds are called?



**Watch Video Solution**

**93.** Warm blooded, external ear, heart is four Chambered in which phylum these characters

are exclusively present?



**Watch Video Solution**

**94.** Which root system present in dicots?



**Watch Video Solution**

**95.** Scorpions, spiders belongs to the phylum?



**Watch Video Solution**



**96.** What is genus?



**Watch Video Solution**

**97.** Canal system can be seen in?



**Watch Video Solution**

**98.** In which phylum water vascular system can be seen?



**Watch Video Solution**

**99.** Name the phylum of the following organisms whose exclusive characteristics are given below (a) Hallow bones (b) Soft body, Muscular marine animal.



**Watch Video Solution**

**100.** Name the five kingdoms of living organisms classified by Whittaker.



**Watch Video Solution**

**101.** Why are living organisms classified?



**Watch Video Solution**

**102.** What are the major groups of moneran organisms?



**Watch Video Solution**

**103.** What is nomenclature? Who proposed it?



**Watch Video Solution**

**104.** What are the characteristic features of phylum Nematoda? Give examples.



**Watch Video Solution**

**105.** What are the salient features of phylum Annelida? Give examples.



**Watch Video Solution**

**106.** What are the salient features of Mollusca?

Give examples.



**Watch Video Solution**

**107.** What are the differences between spores and seeds?



**Watch Video Solution**

**108.** Give the differences between gymnosperms and angiosperms.



**Watch Video Solution**

**109.** What are the salient features or characteristics of Aves? Give examples.



**Watch Video Solution**

**110.** What are the characteristics possessed by Chordates?



**Watch Video Solution**

**111.** Write briefly about the vertebrates.



**Watch Video Solution**

**112.** Write briefly about the division of phylum chordata.



[Watch Video Solution](#)

**113.** What are the three criteria on which Whittaker based his system of classification?



[Watch Video Solution](#)

**114.** Give any two characters of Echinodermata.



[Watch Video Solution](#)



**115.** What are the conventions followed for writing the scientific names?



**Watch Video Solution**

**116.** What are the major divisions in the plantae? What is the basis for these divisions?



**Watch Video Solution**

**117.** Write similarities between plants and animals.



**Watch Video Solution**

**118.** What is biological diversity, classification, taxonomy and variation?



**Watch Video Solution**

**119.** What is the need of classification?



[Watch Video Solution](#)

**120.** What is the relationship between classification and evolution?



[Watch Video Solution](#)

**121.** Write about classification of Carl Linnaeus?



[Watch Video Solution](#)

**122.** Explain the hierarchy of classification.



**Watch Video Solution**

**123.** What are the characteristics of monera?



**Watch Video Solution**

**124.** What are the characteristics of protista?



**Watch Video Solution**

**125.** What are the characteristic features of Fungi?



**Watch Video Solution**

**126.** Write a flow chart for plant kingdom.



**Watch Video Solution**

**127.** What are the characteristic features of porifera?





[Watch Video Solution](#)

**128.** What are the main characteristic features of Platyhelminthes animals?



[Watch Video Solution](#)

**129.** What are the characteristic features of Arthropods? Give examples.



[Watch Video Solution](#)

**130.** What are the characteristic features of Echinodermata? Give examples.



**Watch Video Solution**

**131.** Explain features of protochordate.



**Watch Video Solution**

**132.** Give two points of differentiation of Phylum Annelida, Arthropoda and Mollusca.



**Watch Video Solution**

**133.** What are the characteristic features of fishes?



**Watch Video Solution**

**134.** Write the characteristic features of amphibians.



**Watch Video Solution**



**135.** What are the specific characteristic features of reptiles?



**Watch Video Solution**

**136.** Write the differences between non-chordata and chordata.



**Watch Video Solution**

**137.** Identify the phylum for the following characteristics given Organisms with joint appendages



**Watch Video Solution**

**138.** Identify the phylum for the following characteristics given Hollow bones and stream lined body



**Watch Video Solution**

**139.** Identify the phylum for the following characteristics given Gills in larva, lungs in most adults, slimy skin



**Watch Video Solution**

**140.** Identify the phylum for the following characteristics given Exoskeleton of hair, external ears, mostly giving birth to live young.



**Watch Video Solution**

**141.** What are the specific characteristic features of reptiles?



**Watch Video Solution**

**142.** Plants those having two seed leaves are called

- A. Dicotyledons
- B. Monocotyledons
- C. Protista
- D. Monera

**Answer:**



**Watch Video Solution**

**143.** The presence of differences between organisms of the same species is called

A. Classification

B. Diversity

C. Variation

D. Lineage

**Answer:**



**Watch Video Solution**

**144.** ‘Origin of species’ was written by

A. Lamarck

B. Charles Darwin

C. Linneaus

D. Whittaker

**Answer:**



Watch Video Solution

**145.** It includes all organisms that are similar enough to interbreed

A. Genera

B. Family

C. Species

D. Class

**Answer:**



**146.** Charak and Sushrut has classified plants on the basis of

A. Economics importance

B. Medical importance

C. Yield of Timber

D. Flower structure

**Answer:**





**147.** Who proposed a five kingdom system in 1969 ?

A. Haeckel

B. Copeland

C. Whittaker

D. Cavalier-Smith

**Answer:**



**Watch Video Solution**

**148.** Whittaker classification is based on

A. Whether the organism are prokaryotes  
or Eukaryotes

B. Mode of acquiring food by organisms

C. Whether the organism are unicellular or  
multicellular

D. All the above

**Answer:**



**Watch Video Solution**

**149.** The cell walls of these contain a fat like chemical peptidoglycon.

A. Archaea

B. Bacteria

C. Eukarya

D. All

**Answer:**



**Watch Video Solution**

**150.** Unicellular, Prokaryotes are included under

A. Monera

B. Protista

C. Fungi

D. Plantae

**Answer:**



**Watch Video Solution**

**151.** Ancient bacteria are included in this in this group of monera.

- A. Eubacteria
- B. Cyanobacteria
- C. Archaeobacteria
- D. All

**Answer:**



**Watch Video Solution**

152. Streptococcus, Rhizobium, e.coli are example for

A. Archaeobacteria

B. Eubacteria

C. Cyanobacteria

D. Eukarya

**Answer:**



**Watch Video Solution**

**153.** Unicellular or multicellular eukaryotes are included in

A. Protista

B. Fungi

C. Monera

D. Porifera

**Answer:**



**Watch Video Solution**

**154.** These reproduce by spores.

A. Fungi

B. Monera

C. Protista

D. Gymnosperms

**Answer:**



**Watch Video Solution**



**155.** The level of classification among plants depend on

A. Whether the plant body has well differentiated distinct parts

B. Whether the plant body has vascular tissue

C. Ability to bear seeds and whether the seeds are enclosed within fruits

D. All

**Answer:**



**Watch Video Solution**

**156.** Non flowering plants are

- A. Cryptogams
- B. Phanerogams
- C. Gymnosperms
- D. Angiosperms

**Answer:**



Watch Video Solution

**157.** Plants do not have seeds enclosed within  
are

A. Gymnosperms

B. Angiosperms

C. Cryptogams

D. Phanerogams

**Answer:**



**158.** Porifera organism are also called as

- A. Sponges
- B. Whales
- C. Protochordates
- D. Annelids

**Answer:**



**159.** Example for sponges

A. Cuplectelea

B. Sycon

C. Spongilla

D. All

**Answer:**



**Watch Video Solution**

**160.** Coral reefs belong to this Phylum

A. Porifera

B. Monera

C. Coelenterata

D. Annelida

**Answer:**



**Watch Video Solution**

**161.** The 'body of these animals are bilaterally, symmetrical, triploblastic and segmented

- A. Nematode
- B. Platyhelminthes
- C. Annelida
- D. Coelenterata

**Answer:**



**Watch Video Solution**

**162.** Wuchereria bancrofti causes disease known as

A. Malaria

B. Cholera

C. Filaria

D. Dengue

**Answer:**



**Watch Video Solution**



**163.** The largest group of Animals belongs to this Phylum.

A. Annelida

B. Arthropoda

C. Echinodermata

D. Molluscs

**Answer:**



**Watch Video Solution**

**164.** The skeleton of Echinoderms is made of

A. Calcium carbonate

B. Sodium carbonate

C. Sodium silicate

D. Magnesium carbonate

**Answer:**



**Watch Video Solution**

**165.** Five fold Radial symmetry with rays of arms in five are seen in

A. Echinodermata

B. Arthropoda

C. Annelida

D. Molluscs

**Answer:**



**Watch Video Solution**

**166.** The first organisms that possess back bone

A. Protochordata

B. Fishes

C. Aves

D. Amphibians

**Answer:**



**Watch Video Solution**

**167.** Vertebrates are group into these many classes

A. 3

B. 4

C. 5

D. 6

**Answer:**



**Watch Video Solution**

**168.** Identify the cold blooded animals.

A. Fishes

B. Mammals

C. Aves

D. Marsupials

**Answer:**



**Watch Video Solution**

**169.** Males carry babies as mother in

A. Dolphin

B. Whale

C. Hippocampus

D. Man

**Answer:**



**Watch Video Solution**

**170.** The only flying mammal is

A. Bat

B. Crow

C. Peacock

D. Hen

**Answer:**



**Watch Video Solution**

**171.** Human being are included in order

A. Marsupials

B. Primates



C. Rodents

D. Logomorpha

**Answer:**



**Watch Video Solution**

**172.** Duck billed platypus and Echidna are

A. Coelenterals

B. Rodents

C. Marsupials

D. Egg laying mammals

**Answer:**



**Watch Video Solution**

**173.** Homo Sapiens is the scientific name of

A. Man

B. Dog

C. Cat

D. Mango

**Answer:**



**Watch Video Solution**

**174.** Insects are included under

A. Arthropods

B. Aves

C. Annelids

D. Coelenterates

**Answer:**



[Watch Video Solution](#)

**175.** Pearls are produced from

- A. Oysters
- B. Sea cucumbers
- C. Snails
- D. Sea horse

**Answer:**



[Watch Video Solution](#)

**176.** Marine living and spine skinned animals are

A. Echinodermata

B. Annelida

C. Coelenterates

D. Nematodes

**Answer:**



**Watch Video Solution**

177. Naked seeds are present in

A. Mango

B. Apple

C. Banana

D. Pinus

**Answer:**



**Watch Video Solution**

178. The book 'System Naturae' was written by

A. Haeckel

B. Linneaus

C. Whittaker

D. Woos

**Answer:**



**Watch Video Solution**

**179.** Locomotory organs in Echinodermata are

A. Wings

B. Fins

C. Pseudopodia

D. Tube feet

**Answer:**



**Watch Video Solution**



**180.** Mammals are

A. Viviparous

B. Skin covered with hair

C. Vertebral column is present

D. All the above

**Answer:**



**Watch Video Solution**

**181.** The science of classification is

A. Limnology

B. Taxonomy

C. Diversity

D. Ecology

**Answer:**



**Watch Video Solution**

**182.** Sea horses (Hippocampus) are used in medicine of

A. Chinese

B. Indian

C. Italian

D. American

**Answer:**



**Watch Video Solution**

**183.** Hydra belongs to this phylum.

A. Porifera

B. Coelenterata

C. Molluscs

D. Nematode

**Answer:**



**Watch Video Solution**

**184.** Starfish is an example for

A. Annelid

B. Arthropod

C. Molluscs

D. Echinodermata

**Answer:**



**Watch Video Solution**

**185.** Binomial nomenclature of an organism denotes

A. Genus, Species

B. Species, order

C. Family, genus

D. Order, class

**Answer:**



**Watch Video Solution**

**186.** Friend of the farmer –

A. Cockroach

B. Earthworm

C. Snail

D. Roundworm

**Answer:**



**Watch Video Solution**

**187.** Amphioxus belongs to –

A. Echinodermata

B. Mollusca

C. Protochordata

D. Arthropoda

**Answer:**



**Watch Video Solution**

**188.** Expand L.U.C.A .....

A. Last Universal Common Ancestor

B. Last Universal Central Animal

C. Last United Central Ancestor



D. Last Universal Common Animal

**Answer:**



**Watch Video Solution**

**189.** Mushrooms belongs to this phylum.

A. Algae

B. Bryophyta

C. Fungi

D. Fern

**Answer:**



**Watch Video Solution**

**190.** Organisms with holes on their body

A. Protozoans

B. Cnidarians

C. Porifers

D. Echinoderms

**Answer:**



[Watch Video Solution](#)

**191.** Egg laying mammals are –

- A. Kangaroo and Bat
- B. Echidna and platypus
- C. Rat and Echidna
- D. Platypus and Whales

**Answer:**



[Watch Video Solution](#)

**192.** Cartilaginous skeleton is seen in

A. Shark

B. Exocetus

C. Frog

D. Tuna

**Answer:**



**Watch Video Solution**

**193.** The largest group of animals is seen in

A. Porifers

B. Annelida

C. Protochordata

D. Arthropoda

**Answer:**



**Watch Video Solution**

**194.** Calcium carbonate structures from the skeletons of

A. Echinodermata

B. Mollusca

C. Protochordata

D. Nematode

**Answer:**



**Watch Video Solution**

195. “Seed leaves” are –

- A. Perisperm
- B. Endosperm
- C. Radicle
- D. Cotyledons

**Answer:**



**Watch Video Solution**

**196.** Mucus glands in the skin and three chambered heart are seen in

A. Aves

B. Pisces

C. Reptilia

D. Amphibia

**Answer:**



**Watch Video Solution**



197. Locomotion in Amoeba is carried by

A. Flagella

B. Pseudopodia

C. Nucleus

D. Contractile vacuole

**Answer:**



**Watch Video Solution**

**198.** The animals which can live both on land and water .....

A. Pisces

B. Reptiles

C. Aves

D. Amphibians

**Answer:**



**Watch Video Solution**

**199.** What is the flightless bird ?

A. Duck

B. Cock

C. Pigeon

D. Ostrich

**Answer:**



**Watch Video Solution**

**200.** The following animals is a cold blooded one

A. Snake

B. Gorilla

C. Parrot

D. Tiger

**Answer:**



**Watch Video Solution**

**201.** Pick out the odd one

A. Shark

B. Tortoise

C. Crocodile

D. Dolphin

**Answer:**



**Watch Video Solution**

**202.** Pick out the odd one

A. Cockroach

B. Earthworm

C. Sycon

D. Frog

**Answer:**



**Watch Video Solution**

**203.** Read the following statements.

a) Exoskeleton of scales, eggs laying outside water are features of Reptalia  
b) Exoskeleton of

scales, endoskeleton of bones breathing through gills features of pisces

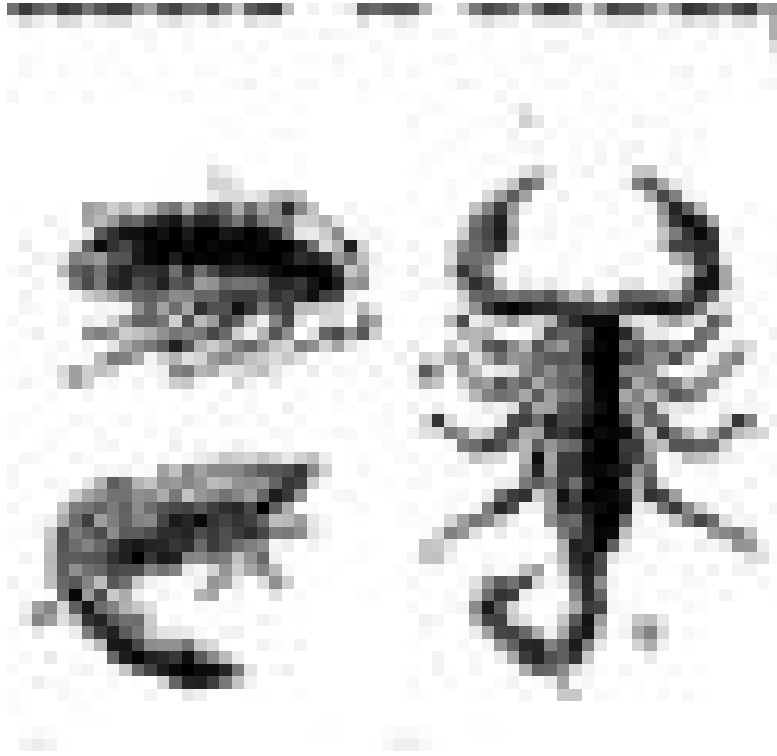
- A. a correct, b incorrect
- B. B correct, a incorrect
- C. Both a, b incorrect
- D. Both a, b correct

**Answer:**



**Watch Video Solution**

204. Name the organisms that belongs to the following phylum.



A. Annelida

B. Arthropoda



C. Mollusca

D. Echinodermata

**Answer:**



**Watch Video Solution**

**205.** Identify the phylum of the organism



A. Arthropoda

B. Mollusca

C. Echinodermata

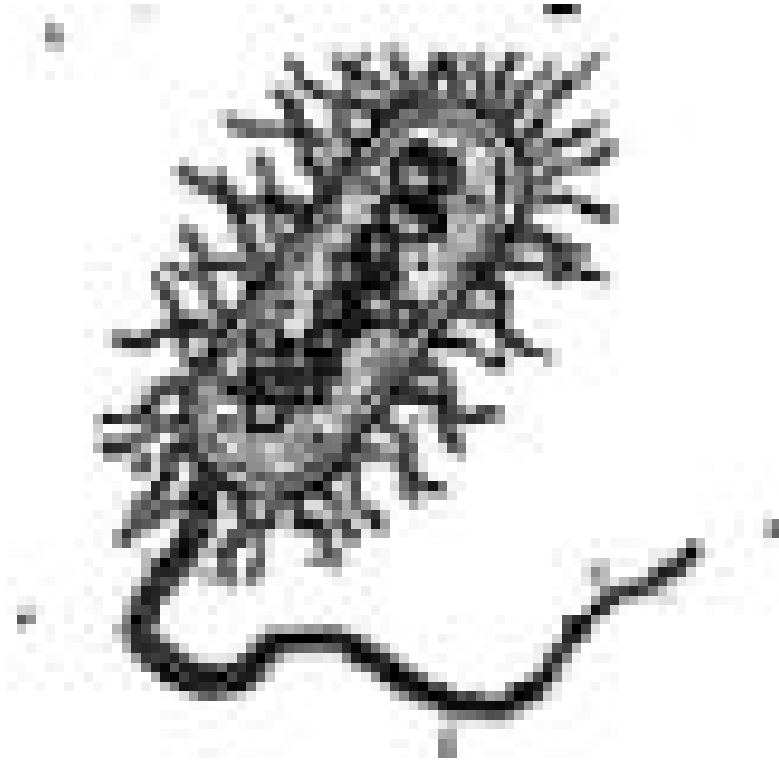
D. Protochordata

**Answer:**



**Watch Video Solution**

206. Name the organism in the picture.



A. Lizard

B. Paramecium

C. Bacteria

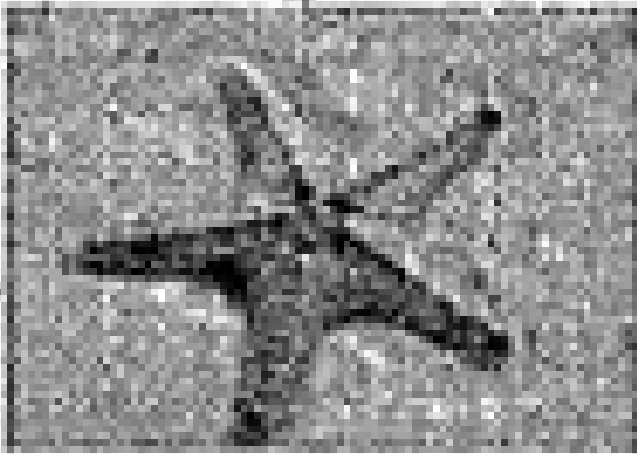
D. Virus

**Answer:**



**Watch Video Solution**

**207.** This animal belongs to



A. Mollusca

B. Arthropoda

C. Echinodermata

D. Amphibia

**Answer:**



**Watch Video Solution**

**208.** I am an oyster. I produce pearls. Which phylum do I belong to?

A. Arthropoda

B. Annelida

C. Mollusca

D. Echinodermata

**Answer:**



**Watch Video Solution**

**209.** I am a crocodile. I have 4 chambered heart. Which phylum do I belong to?

A. Mammal

B. Pisces

C. Amphibia

D. Reptelia

**Answer:**



**Watch Video Solution**

**210.** Arrange the flow chart in the correct order. Phylum(1) → Class(2) → Order(3) → Family(4) → Genus(5).

A. 5,4,3,2,1

B. 1,3,2,4,5

C. 1,2,3,5,4

D. 1,2,3,4,5

**Answer:**



**Watch Video Solution**