



BIOLOGY

BOOKS - VGS PUBLICATION-BRILLIANT

SUMMATIVE ASSESSMENT

Summative Assessment

1. What is the bark of stem?



Watch Video Solution

2. Write any two common diseases of eyes.



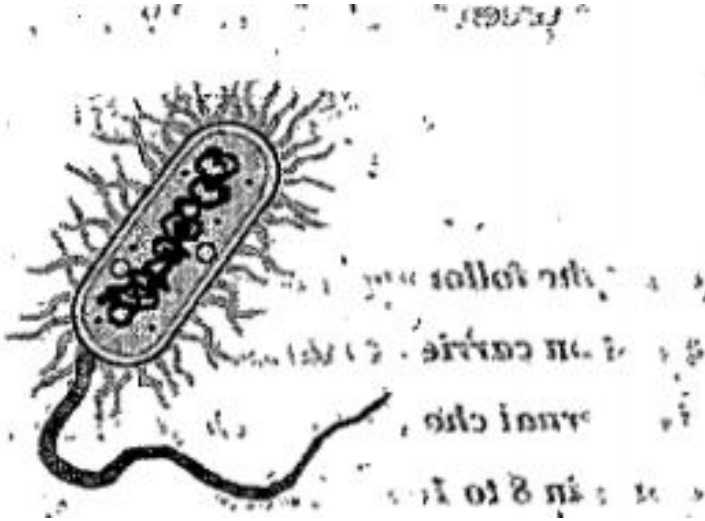
Watch Video Solution

3. What problems will arise due to losing of skin sensation?



Watch Video Solution

4. Identify the diagram



[Watch Video Solution](#)

5. Difference between chemical fertilizers and natural fertilizers.

[Watch Video Solution](#)

6. How do you appreciate the processing protection pebble plants from the enemies?



Watch Video Solution

7. “Save Water” write any two methods to use your house.



Watch Video Solution

8. During the severes of cough and cold we loss taste of food. What is the reason for it?



Watch Video Solution

9. If you touch your elbow. You get a shock like feeling. Why?



Watch Video Solution

10. Read the following paragraph answer the following question. Chicks and duckling are able walk the eggs. Ducklings can even swim after few days.The recognize their mother because of a behavior type called “Imprinting”. Duckling and chicks can stay together. How?



Watch Video Solution

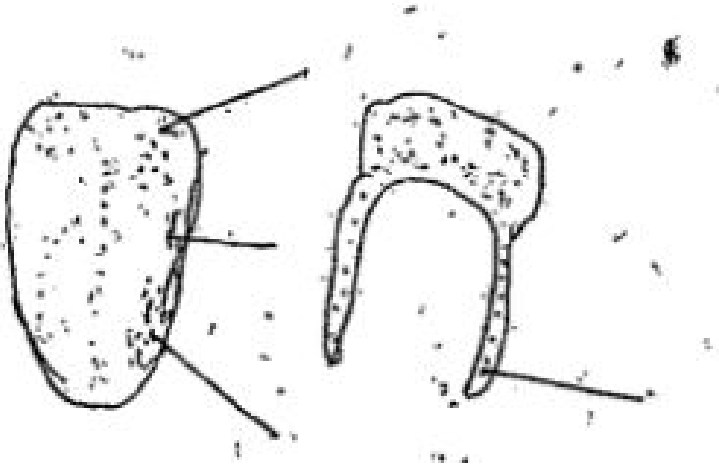
11. Read the following paragraph answer the following question. Chicks and duckling are

able walk the eggs. Ducklings can even swim after few days. They recognize their mother because of a behavior type called “Imprinting”. What is the significance of Imprinting?



Watch Video Solution

12. Identify the diagram & parts.



 [Watch Video Solution](#)

13. Rani said soil health is Important. How can you support her?

 [Watch Video Solution](#)

14. Prepare slogans on Green “ House Effect”?

Write any 4?



[Watch Video Solution](#)

15. Difference between Rods and Cones?



[Watch Video Solution](#)

16. How do monocots differ from dicots?





[Watch Video Solution](#)

17. How can you prove Osmosis through an experiment?



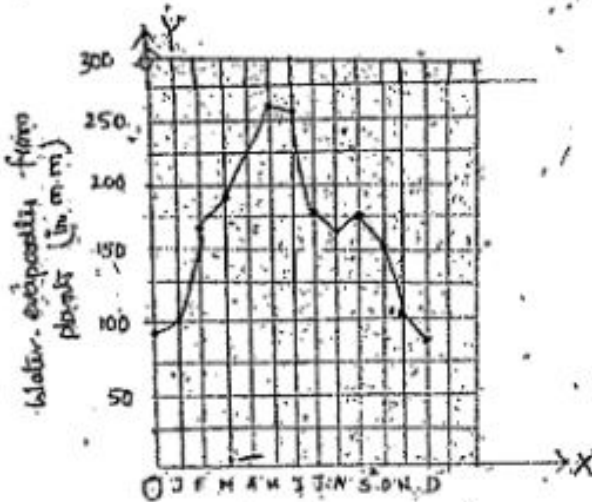
[Watch Video Solution](#)

18. Explain Oxygen cycle and water cycle flow chart.



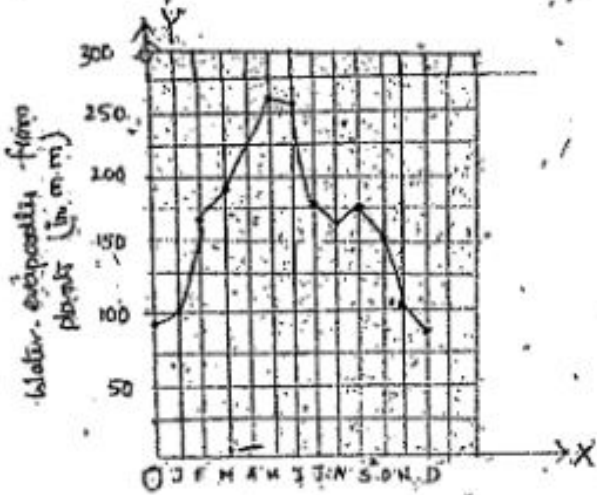
[Watch Video Solution](#)

19. find out from the graph the month in which the most water evaporates from plants?



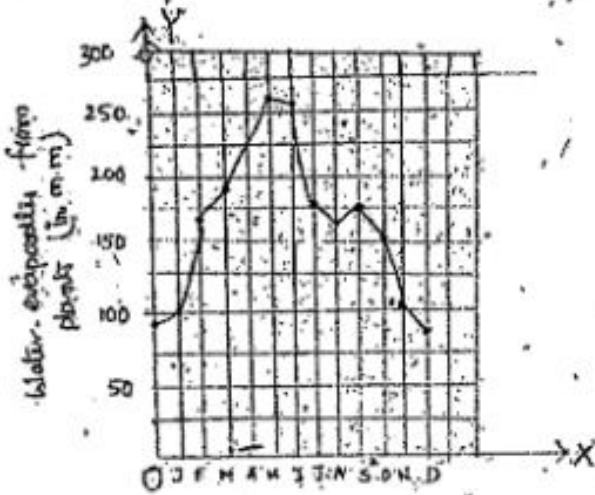
[Watch Video Solution](#)

20. Which months low water release evaporates the plants?



[Watch Video Solution](#)

21. So how does the availability of more water effect on the plants?



[Watch Video Solution](#)

22. What is Meristimatic Tissues?

Meristimatic Tissues	The cells are small and have thin cell well
Dermal Tissues	Covers the plant body and give protection
Ground Tissues	Give support and store food
Vascular Tissue	Mainly comprises of Xylem and Phloem

[Watch Video Solution](#)

23. Which Tissues stored food materials?

Meristimatic: Tissues	The cells are small and have thin cell well
Dermal Tissues	Covers the plant body and give protection
Ground Tissues	Give support and store food
Vascular Tissue	Mainly comprises of Xylend Alphlam



[Watch Video Solution](#)

24. What are the uses of plant tissues?

Meristimatic: Tissues	The cells are small and have thin cell well
Dermal Tissues	Covers the plant body and give protection
Ground Tissues	Give support and store food
Vascular Tissue	Mainly comprises of Xylend Alphlam



[Watch Video Solution](#)

25. Our India is high crop yielding position what are different methods to get high yielding crops?



Watch Video Solution

26. Variations lead to diversity in living organisms? State reasons.



Watch Video Solution

27. Lysosomes are called

- A. Power houses of cell
- B. Mesibrain of cell
- C. Suicidal bags of the cell
- D. Permable membrane

Answer:



Watch Video Solution

28. Find out the false statement.

A. Mitochondrion is 3-7 micron long and about 0-4 microns wide

B. Rudolf Virchow gave the cell theory a final shape

C. Cell is the basic unit of life

D. The outer boundary of the coloured area is actually the cell membrane.

Answer:



Watch Video Solution

29. Which tissue is responsible for conduction of water from roots to other parts of plant body

A. Xylem

B. Parenchyma

C. Collenchyma

D. Phloem

Answer:



[Watch Video Solution](#)

30. Identify unfair match the following

A. Monera-Bacteria

B. Animalia- paramecium

C. Protista- Amoeba

D. Plantae-Ferns

Answer:



[Watch Video Solution](#)

31. This vitamin is essential for the health of eyes

A. Vitamin- 'A'

B. Vitamin -'B'

C. Vitamin- 'k'

D. Vitamin-'c'

Answer:



Watch Video Solution

32. The largest organ in the human being

A. Liver

B. Leg

C. Skin

D. Brain

Answer:



Watch Video Solution

33. The nutrients required for the plants in smaller quantities

- A. Micro nutrient
- B. Macro nutrient
- C. Artificial nutrients
- D. Natural nutrients

Answer:



Watch Video Solution

34. Name of the smallest bone present in the ear

A. Malleus

B. Stapes

C. Incus

D. Tympanum

Answer:



Watch Video Solution

35. The nucleus of the cell discovered by

- A. Robert Brown
- B. Leeuwen Hook
- C. Robert Hooke
- D. Darwin

Answer:



Watch Video Solution