



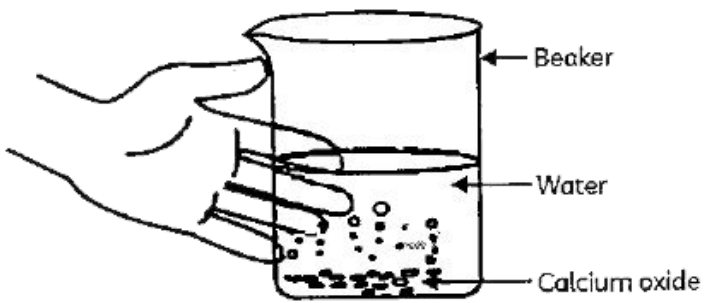
CHEMISTRY

BOOKS - EDUCART PUBLICATION

SAMPLE PAPER 2

Section A

1. Identify the type of reaction in the following experiment:



(I) Combination Reaction

(II) Decomposition Reaction

(III) Exothermic Reaction

(IV) Endothermic Reaction

A. Only (I)

B. Only (II)

C. Both (I) and (III)

D. Both (II) and (IV)

Answer: C



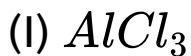
Watch Video Solution

2. A few drops of phenolphthalein indicator were added to an unknown solution A. It acquired pink colour. Now another unknown solution B was added to it dropwise and the solution ultimately became colourless. Predict the nature of the solution A and B.



Watch Video Solution

3. Which of the following are not ionic compounds ?



A. (I) and (II)

B. (II) and (III)

C. (III) and (IV)

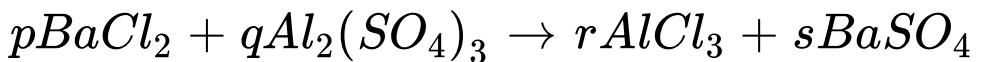
D. (I) and (III)

Answer: B



Watch Video Solution

4. The value of p, q, r and s in balanced chemical equation :



are respectively

A. 3,2,2,3

B. 3,1,2,3

C. 3,1,3,3

D. 3,1,3,2

Answer: D



Watch Video Solution

5. Which of the following is acidic in nature?

A. Milk

B. Human blood

C. Lime water

D. Laundry detergents

Answer: A



Watch Video Solution

6. Packed food items made up of oils and fats are generally flushed with inert gas

To protect them from corrosion.

(II) They protect their flavours.

(III) To protect them from being rancid .

(IV) To protect their taste. Which of the following statements are correct ?

A. (II), (III) ,(IV)

B. (III) and (IV)

C. only (III)

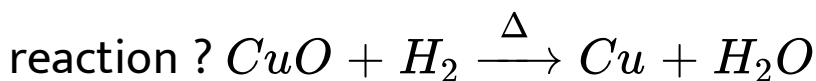
D. (I) and (II)

Answer: A



Watch Video Solution

7. Which component is being reduced in the



A. Cu

B. H_2

C. CuO

D. Both CuO and H_2

Answer: C



Watch Video Solution

8. Soda acid extinguisher contains the chemical :

A. $NaHCO_3$

B. $Na(OH)$

C. Na_2CO_3

D. $NaCl$

Answer: A



Watch Video Solution

9. Select the correct statements w,r,t bases :

(I) Bases have bitter taste and soapy touch .

II With carbon dioxide ,they form salt and

water .

(III) The gas evolved with zinc metal extinguishes a lightning splinter .

A. Statements (I) and (III) are correct

B. Only Statements (I) is correct

C. Statements (I) and (II) are correct

D. Only statement (II) correct

Answer: C



Watch Video Solution

10. On passing electric current through acidified water :

(I) Hydrogen gas is collected over cathode and oxygen gas is collected over anode .

(II) Oxygen gas is collected over cathode and hydrogen gas is collection over anode.

(III) Ratio of Volume of hydrogen gas : oxygen gas = 1 : 2

(IV) Ratio of Volume of hydrogen gas : oxygen gas = 2 : 1

Select the correct statements :

A. Both (I) and (III)

B. Both (I) and (IV)

C. Both (II) and (III)

D. Both (II) and (IV)

Answer: B



Watch Video Solution

11. When do the desert plants take up carbon dioxide ?

A. During early morning

B. During day

C. During night

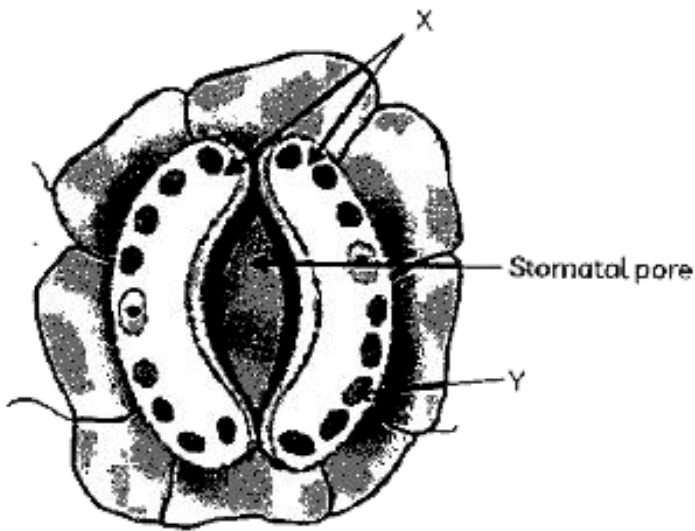
D. All the time

Answer: C



Watch Video Solution

12. Study the diagram of a stomatal pore with labels X and Y and select the option which gives the correct identification and main function of X and Y .



Option	X	Function of X	Y	Function of Y
(a)	Guard cells	Opening and closing of stomatal pore	Chloroplast	Responsible for photosynthesis
(b)	Guard cells	Transpiration	Chloroplast	Gaseous exchange
(c)	Chloroplast	Opening and closing of stomatal pore	Lower Epidermis	Gaseous exchange
(d)	Chloroplast	Transpiration	Guard cells	Opening and closing of stomatal pore

 [View Text Solution](#)

13. Rings of cartilage in the throat prevents :

- A. Collapsing of air passage.
- B. Entering of food in air pipe.
- C. Bacterial infection in the tract
- D. Entering of microbes.

Answer: A



Watch Video Solution

14. Which of the following factors influence ascent of sap ?

(I) Root Pressure

(II) Diffusion

(III) Osmotic Pressure

(IV) Transpiration Pull

(V) Turgor pressure

A. (I) ,(III) ,(IV),(V)

B. (I),(IV),(V)

C. (III) ,(IV),(V)

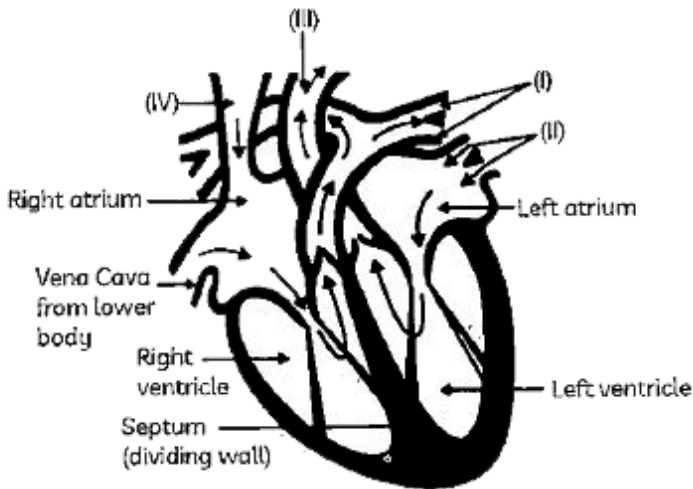
D. (I),(IV)

Answer: D



Watch Video Solution

15. Carefully study the diagram of the human heart with labels (I) , (II) , (III) and (IV) . Select the option which gives correct identification and its main function.



A. (I) Pulmonary artery: Carry oxygenated blood from heart to lungs

B. (II) Pulmonary veins : Carry oxygenated
blood from lungs to the heart

C. (III) Aorta : Carry deoxygenated blood
from heart to lungs

D. (IV) Vena Cava : Carry oxygenated blood
from body parts to heart

Answer: B



View Text Solution

16. What is the final product of protein carbohydrate and fat digestion ?

A. Protein - Ammonia Fats - Fatty Acid +

Glycerol Carbohydrates -Glucose

B. Protein -Amino acid Fats - Fatty Acid

Carbohydrates - maltose

C. Protein - Amino acid Fats - Fatty Acid +

Glycerol Carbohydrates -Glucose

D. Protein -Ammonia Fats - Chylomicrons

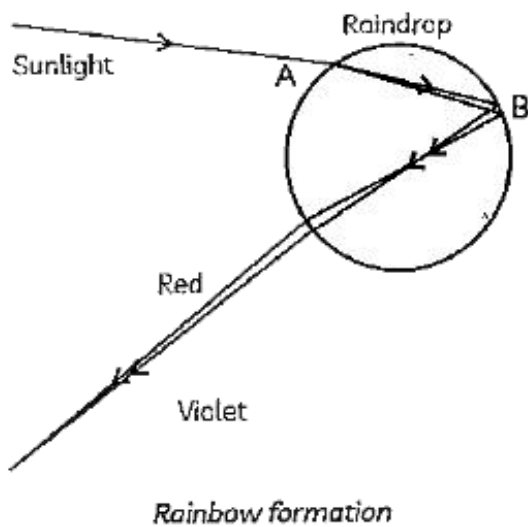
Carbohydrates -Glucose

Answer: C



Watch Video Solution

17. Study the given diagram explaining the formation of rainbow in the sky :



Select the correct statements w.r.t the diagram above.

- A. Dispersion occurs at point A
- B. Internal refraction occurs at point B
- C. Internal reflection occurs at point A
- D. Dispersion occurs at point B

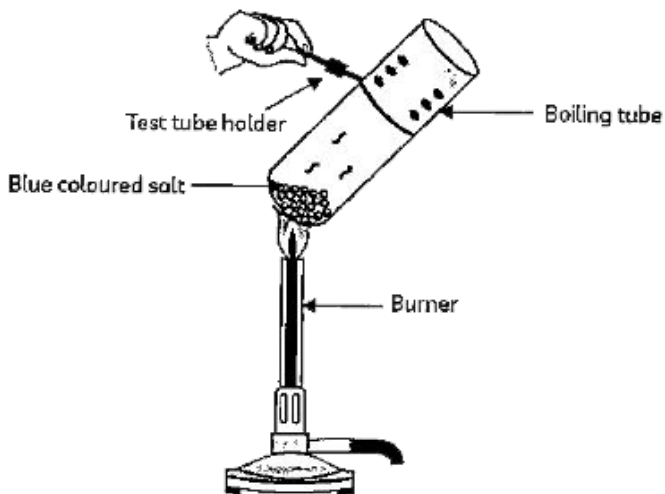
Answer: A



View Text Solution

Section B

1. A blue coloured salt turns white when heated but regains its blue colour when moistened with water as shown in figure below :



The salt is :

- A. $FeSO_4 \cdot 7H_2O$
- B. $CuSO_4 \cdot 5H_2O$
- C. $Na_2CO_3 \cdot 10H_2O$
- D. $CaSO_4 \cdot 2H_2O$

Answer: B



[View Text Solution](#)

2. Why is sodium metal never left open in air ?

A. It melts at room temperature .

B. It reacts with moisture present in air
violently .

C. It reacts with oxygen present in air
violently .

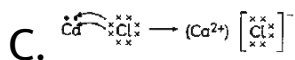
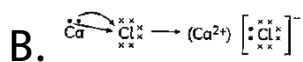
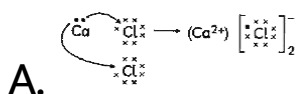
D. Both (b) and (c) .

Answer: C



Watch Video Solution

3. Which of the following option is /are the correct representation of the formula for the compound $CaCl_2$?



D. Cl-Ca-Cl

Answer: A



Watch Video Solution

4. Name the substance obtained by the action of chlorine on dry slaked lime .

- A. Washing soda
- B. Hypochloride
- C. Baking soda
- D. Bleaching powder

Answer: D



Watch Video Solution

5. A salt is obtained using common salt as a raw material it is used glass , soap and paper industries and also used in the manufacture of sodium compounds such as borax. Identify the salt .

A. Caustic soda

B. Bleaching powder

C. Baking soda

D. Washing soda

Answer: D



Watch Video Solution

6. Assertion (A) : Baking soda solution is applied on the area stung by bee or ant .

Reason (R) : Baking soda is base and

neutralises formic acid injected into the area by the insect .

A. Both A and R are true , and R is the correct explanation of A.

B. Both A and R are true , but R is not the correct explanation of A.

C. A is true but R is false .

D. A is false but R is true .

Answer: A



Watch Video Solution

7. Assertion (A) : Silver bromide is used on photographic and X - ray film .

Reason (R) : Silver bromide is photosensitive and change to silver and bromine in presence of sunlight and undergoes decomposition reaction.

A. Both A and R are true , and R is the correct explanation of A.

B. Both A and R are true , but R is not the correct explanation of A.

C. A is true but R is false .

D. A is false but R is true .

Answer: A



Watch Video Solution

8. Assertion (A) : When we blow into a test - tube containing lime water ,it turns milky

Reason (R) : This shows the presence of CO_2 in the exhaled air .

A. Both A and R are true , and R is the correct explanation of A.

B. Both A and R are true , but R is not the correct explanation of A.

C. A is true but R is false .

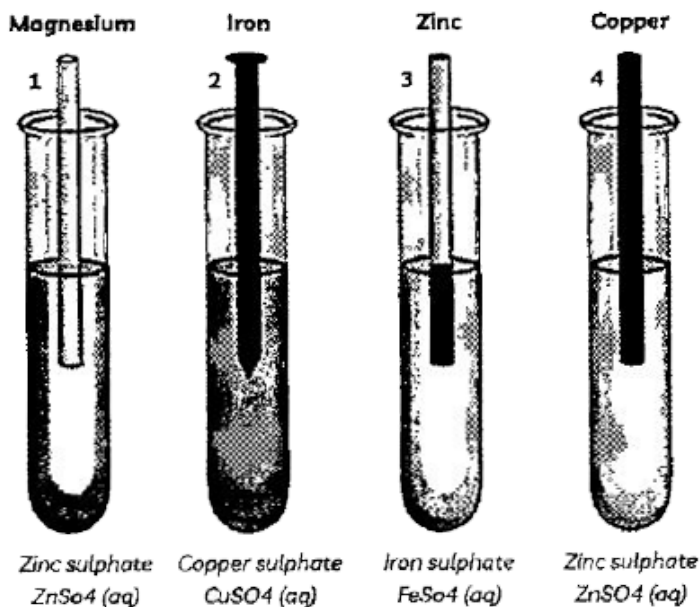
D. A is false but R is true .

Answer: C



Watch Video Solution

9. A student performed an experiment by taking different metals and dipping them in salt solutions in test tubes marked 1,2,3 and 4 as shown in the figure below :



Indicate the correct option from the given

table which represents any reaction taking place in the test tubes :

Option	Test Tube-1	Test Tube-2	Test Tube-3	Test Tube-4
(a)	Yes	Yes	No	Yes
(b)	Yes	No	Yes	No
(c)	Yes	Yes	Yes	No
(d)	No	Yes	Yes	No



[View Text Solution](#)

10. The products of anaerobic respiration in yeast are :

(I) Ethanol

(II) Lactic acid

(III) Carbon dioxide

(IV) Water

A. Both (I) and (II)

B. Both (II) and (III)

C. Both (II) and (IV)

D. Both (I) and (III)

Answer: D



Watch Video Solution

11. Which is the basic filtration unit present in the kidneys .

A. Neuron

B. Bowman ' s capsule

C. Nephrons

D. DCT

Answer: C



Watch Video Solution

12. The exchange of material between the blood and surrounding cells takes place through :

A. Arteries

B. veins

C. Capillaries

D. Nephrons

Answer: C



Watch Video Solution

13. Four statements on blood are given below .

Select the incorrect statements :

(I) Blood is a fluid connective tissue .

(II) Blood consists of a solid medium called plasma in which the cells are suspended .

(III) Plasma transports food ,carbon dioxide and nitrogenous wastes in gaseous form .

(IV) Many other substances like salts are transported by the blood .

A. Both (I) and (II)

B. Both (II) and (III)

C. Both (III) and (IV)

D. Both (I) and (IV)

Answer: B



View Text Solution

14. Which metals do not react with water at all

?

A. Pb

B. Zn

C. Cu

D. Both (a) and (c)

Answer: D

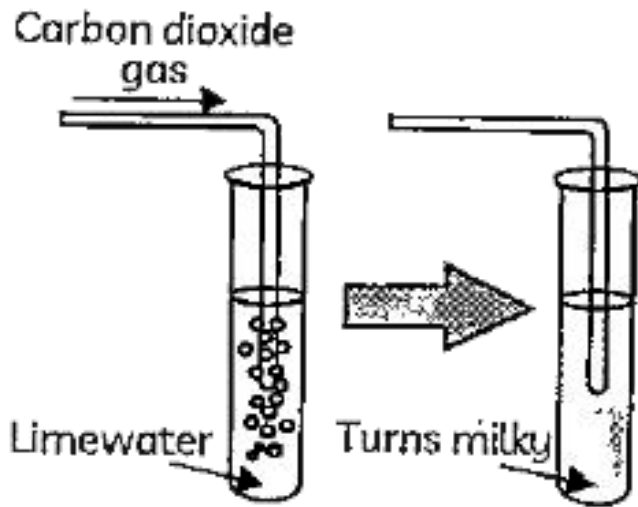


Watch Video Solution

Section C

1. Case 1 : Apoorna took a lime solution and passed a gas 'X' through it .The solution becomes turgid . This solution was then

divided into two parts In the first part ,more of gas 'X' was passed .While in the second part concentrated sulphuric acid was added . A white precipitate was formed in second part



The gas mentioned in above passage is :

A. O_2

B. H_2S

C. CO_2

D. H_2

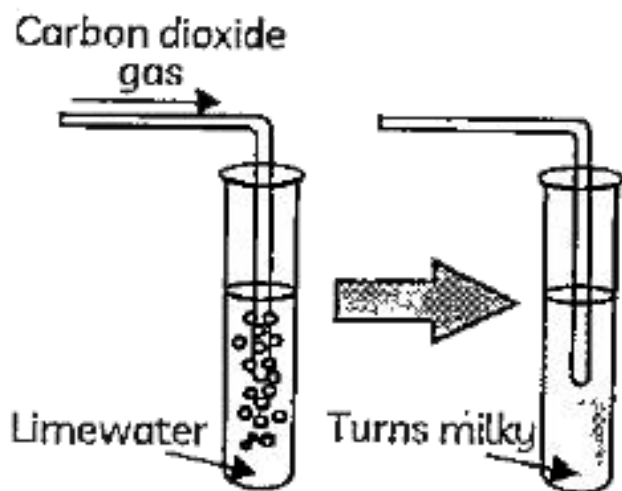
Answer: C



View Text Solution

2. Case 1 : Apoorva took a lime solution and passed a gas 'X' through it .The solution becomes turbid . This solution was then divided into two parts In the first part ,more of gas 'X' was passed .While in the second part

concentrated sulphuric acid was added . A white precipitate was formed in second part



$Ca(HCO_3)$ is :

- A. soluble in water
- B. partly soluble in water
- C. insoluble in water

D. partly insoluble in water

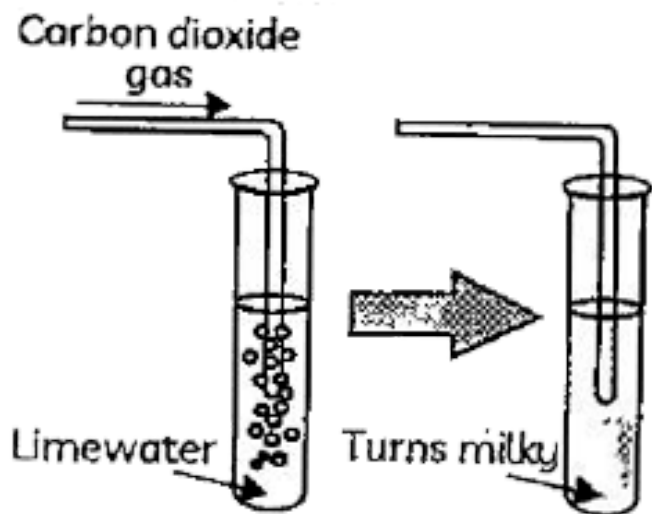
Answer: A



View Text Solution

3. Case 1 : Apoorna took a lime solution and passed a gas 'X' through it .The solution becomes turgid . This solution was then divided into two parts In the first part ,more of gas 'X' was passed .While in the second part concentrated sulphuric acid was added . A

white precipitate was formed in second part



Lime water and chlorine reacts to form :

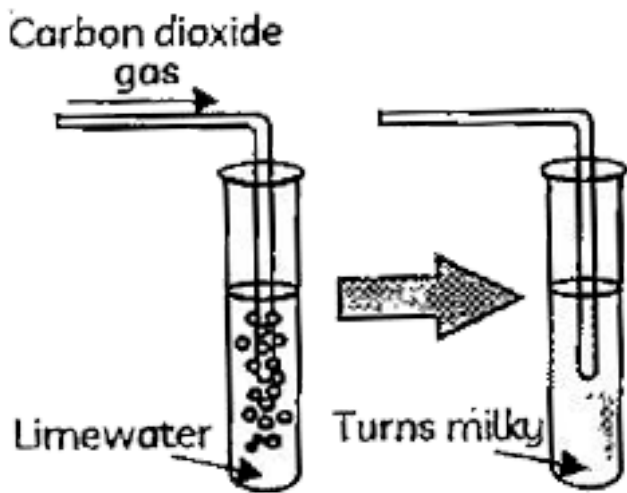
- A. $CaCl_2$
- B. $CaOCl_2$
- C. $Ca(ClO_3)_2$
- D. CaO_2Cl_2

Answer: B



View Text Solution

4. Case 1 : Apoorva took a lime solution and passed a gas 'X' through it .The solution becomes turbid . This solution was then divided into two parts In the first part ,more of gas 'X' was passed .While in the second part concentrated sulphuric acid was added . A white precipitate was formed in second part



Lime water turns milky in the reaction due to the :

- A. Formation of calcium carbonate
- B. CO_2 gas evolved
- C. Formation of calcium bicarbonate
- D. Oxygen gas is evolved

Answer: A



View Text Solution