



# BIOLOGY

## BOOKS - OSWAL PUBLICATION

### DIKSHA QUESTIONS

#### Life Processes Very Short Answer

1. Which organelle perform aerobic respiration in cell?



**Watch Video Solution**

2. Why carbon dioxide is mostly transported in dissolved form?



[Watch Video Solution](#)

3. Enlist the site of synthesis and storage of bile.



[Watch Video Solution](#)

4. If salivary amylase is lacking in the saliva, which of the following events in the mouth cavity will be affected?



**Watch Video Solution**

5. Define photolysis.



**Watch Video Solution**

6. Lack of oxygen in muscles often leads to cramps among cricketers. This results due to



**Watch Video Solution**

7. Why do the walls of trachea not collapse when there is less air in it?



**Watch Video Solution**

**8.** What do you mean by ascent of sap in plants ?



**Watch Video Solution**

**9.** What is osmoregulation? Describe how the kidneys help in osmoregulation in mammals?



**Watch Video Solution**

**10.** Which chemical is used to test the presence of starch ?



**Watch Video Solution**

**11.** In photosynthesis, which substances are used up, which are produced and which are necessary, but remain unchanged after the

reaction?

	Used up	Produced	Remain Unchanged
(a)	Carbon dioxide	Water	Oxygen
(b)	Chlorophyll	Carbon dioxide	Water
(c)	Oxygen	Starch	Cellulose
(d)	Water	Oxygen	Chlorophyll



[Watch Video Solution](#)

**12.** In the following questions, a statement of assertion (A) is followed by a statement of reason (R),

Assertion: Transpiration cools leaf surface.

Reason: Transpiration helps in translocation of sugar in plants

A. Both assertion (A) and reason (R) are true and reason (R) is the correct explanation of assertion (A).

B. Both assertion (A) and reason (R) are true but reason (R) is not the correct explanation of assertion(A).

C. Assertion(A)is true but reason(R)is false.

D. Assertion(A)is false but reason(R)is true.



**Answer:**



**Watch Video Solution**

**13. Assertion:** Villi are present on the internal wall of intestine.

**Reason:** Villi absorb digested food.

A. Both assertion (A) and reason (R) are true and reason (R) is the correct explanation of assertion (A).

B. Both assertion (A) and reason (R) are true but reason (R) is not the correct explanation of assertion(A).

C. Assertion(A)is true but reason(R)is false.

D. Assertion(A)is false but reason(R)is true.

**Answer:**



**Watch Video Solution**

**14.** What is the mode of nutrition in fungi ?

A. Autotrophic

B. Heterotrophic

C. Saprophytic

D. Parasitic

**Answer: C**



**Watch Video Solution**

**15. vocal cords are situated at**

A. pharynx

B. glottis

C. bronchial tube

D. larynx

**Answer: D**



**Watch Video Solution**

**16.** Fill in the blanks: Ultra filtration takes place in \_\_\_\_\_ of the nephron.



**Watch Video Solution**

**17.** Fill in the blanks: \_\_\_\_\_ is involved in breakdown of glucose to produce energy for metabolic activities in a cell.



**Watch Video Solution**

**18.** What happens to the glucose present in the filtrate when it reaches the proximal convoluted tubules?



**Watch Video Solution**

1. What substances are contained in gastric juice ? What are their functions?



[Watch Video Solution](#)

2. What are the end products formed during fermentation in yeast? Under what conditions a similar process takes place in our body that leads to muscle cramps?



[Watch Video Solution](#)

3. Why and how does water enter continuously into the root xylem ?



**Watch Video Solution**

4. Bile juice contains no digestive enzymes, yet it is important for digestion. Why?



**Watch Video Solution**

5. Why does absorption of digested food occur mainly in the small intestine ?



[Watch Video Solution](#)

## Life Processes Long Answer

1. Draw a diagram of human alimentary canal and label on it: Oesophagus, buccal cavity, stomach, small intestine, large intestine, and colon.





[Watch Video Solution](#)

2. Bile juice does not contain any enzyme but is essential for digestion. Why?



[Watch Video Solution](#)

3. Elucidate the process of double circulatory system with the help of a diagram.

Write one function each of the following components of the transport system in human

beings: a) Blood vessels b) Blood platelets c)  
Lymph d) Heart



[Watch Video Solution](#)

4. How does aerobic respiration differ from anaerobic respiration ?



[Watch Video Solution](#)

5. Differentiate between  
Blood and lymph

Basophils and eosinophils

tricuspid and bicuspid valve



**Watch Video Solution**

6. Describe the process of digestion in man.



**Watch Video Solution**

7. Draw a sectional view of the human heart and label on it, aorta, right ventricle, pulmonary vein, pulmonary artery



**Watch Video Solution**

**8. State the functions of blood**



**Watch Video Solution**

**9. What are the functions of lymph ?**



**Watch Video Solution**

**10.** Draw a neat and well labelled diagram of human excretory system.



**Watch Video Solution**

**11.** Show break down of glucose by various pathways.



**Watch Video Solution**

12. Give an experiment to prove that  $CO_2$  is necessary for photosynthesis.



[Watch Video Solution](#)

## Life Processes Multiple Choice Questions

1. To prepare a good temporary mount of the petunia leaf peel showing many stomata, the student has to get the peel from the :

A. lower surface of the leaf

B. tip of the leaf

C. point of attachment of the leaf to its  
petiole.

D. upper surface of the leaf

**Answer: A**



**Watch Video Solution**

2. Which of the following element is essential  
for the formation of protein?

A.  $N_2$

B. Na

C. Ca

D. Fe

**Answer: A**



**Watch Video Solution**

**3. Instant source of energy is \_\_\_\_\_**

A. Sucrose



B. Fats

C. Glucose

D. Amino acids

**Answer: C**



**Watch Video Solution**

4. The breakdown of pyruvate to give carbon dioxide, water and energy takes place in \_\_\_\_\_

A. cytoplasm

B. mitochondria

C. chloroplast

D. nucleus

**Answer: B**



**Watch Video Solution**

5. Blood from superior vena cava flows into

\_\_\_\_\_

A. Right atrium

B. Right ventricle

C. Left atrium

D. Left ventricle

**Answer: A**



**Watch Video Solution**

6. In which of the following vertebrate group/groups, heart does not pump oxygenated blood to different parts of the body ?

A. Pisces and Amphibians

B. Amphibians and Reptiles

C. Amphibians only

D. Pisces only

**Answer: D**



**Watch Video Solution**

7. The doctor measured Ravi's blood pressure and said it is normal now. The range of Ravi's

blood pressure (systolic/diastolic) is likely to be -

A. 120/80 mm of Hg

B. 160/80 mm of Hg

C. 120/60 mm of Hg

D. 180/80 mm of Hg

**Answer: A**



**Watch Video Solution**

8. Observe the given graphical representation below and answer the given question

Among A, B and C the products of respiration in A is likely to be -

A. Alcohol,  $CO_2$ , and 36 ATP

B.  $CO_2$ ,  $H_2O$ , and 36 ATP

C. Alcohol,  $CO_2$ , and 2 ATP

D. Lactic acid,  $CO_2$ , and 2 ATP

**Answer: C**



**View Text Solution**

9. If the structure marked X in the diagram given below is blocked then which of the processes will not occur?

A. Transpiration and respiration

B. Transpiration, photosynthesis and respiration

C. Respiration, transpiration and transportation

D. Respiration and photosynthesis

**Answer: B**



**View Text Solution**

## Reproduction Very Short Answer

1. Name the artificial propagation method used for the propagation of (a) rose plants and (b) apple tree.



**Watch Video Solution**



2. Why is reproduction essential for living organisms ?



**Watch Video Solution**

3. Enlist two contraceptive methods.



**Watch Video Solution**

4. What is the effect of DNA copying which is not perfectly accurate in the reproductive process?



[Watch Video Solution](#)

5. Name the male and female sex hormones.



[Watch Video Solution](#)

6. List two unisexual flowers.



[Watch Video Solution](#)

[Reproduction Short Answer](#)

## 1. Implantation



[Watch Video Solution](#)

## 2. Explain the Placenta



[Watch Video Solution](#)

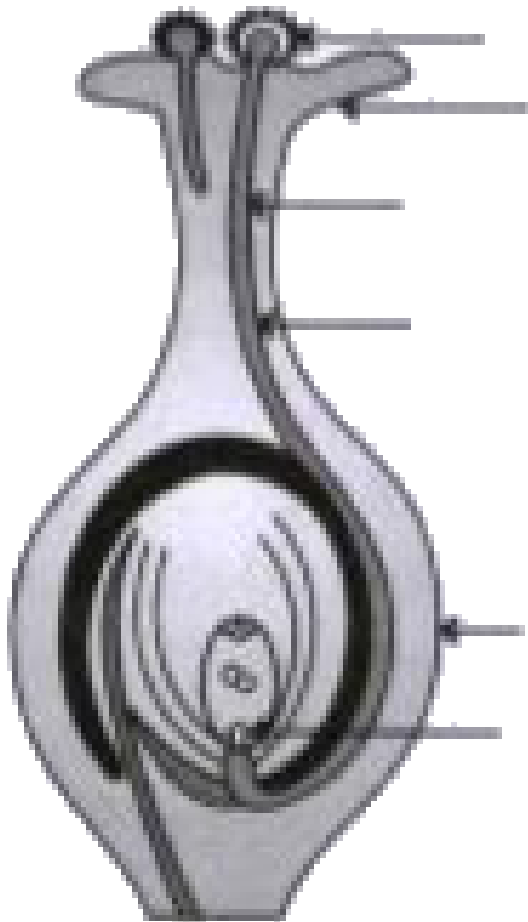
3. What is the average duration of human pregnancy?



[Watch Video Solution](#)

4. (i) Label the following diagram.

(ii) Which process is being shown in the diagram?





**Watch Video Solution**

**5. Discuss spore formation in fungi.**



**Watch Video Solution**

**6. What are various ways to avoid pregnancy?**

**Elaborate any one method.**



**Watch Video Solution**

7. Define vegetative propagation. List its methods and advantages.



**Watch Video Solution**

8. What is placenta? Mention its role during pregnancy.



**Watch Video Solution**

**9.** Draw a labeled diagram of male reproductive system.



**Watch Video Solution**

**10.** Draw a labelled diagram of a human female reproductive system and explain the function of each organ.



**Watch Video Solution**

**11.** Explain Binary Fission in Amoeba and Multiple fission in Plasmodium.



**Watch Video Solution**

**12.** How will an organisms be benefited if it reproduces through spores?



**Watch Video Solution**

**13.** What is reproduction? Lists its two types.





[Watch Video Solution](#)

**14.** How is reproduction in leishmania different from that in plasmodium though both are unicellular?



[Watch Video Solution](#)

**15.** Which part of the flower changes into seed after fertilization?



[Watch Video Solution](#)

**16.** Can you consider cell division as a type of reproduction in unicellular organism? Give one reason.



**Watch Video Solution**

**17.** Name a surgical contraceptive method in case of females.



**Watch Video Solution**

**18.** The unfertilised egg always has one \_\_\_\_\_ chromosome.



**Watch Video Solution**

**19.** Animals produce gametes which fuse to form a \_\_\_\_\_



**Watch Video Solution**

**Reproduction Long Answer**

1. Write the functions of placenta.



**Watch Video Solution**

2. Give reasons: Placenta is extremely essential for foetal development



**Watch Video Solution**

3. Give reasons: Blocking of vas-deferens prevents pregnancy.



[Watch Video Solution](#)

4. Give reasons: Wind acts as a pollinating agent.



[Watch Video Solution](#)

5. Give reasons: Use of condoms prevents pregnancy.



[Watch Video Solution](#)

6. Give reasons: Blocking of Fallopian tubes prevents pregnancy.



[Watch Video Solution](#)

7. Draw the diagram of a flower and label the four whorls. Write the names of gamete producing organs in the flower.



[Watch Video Solution](#)

**8.** Explain regeneration in Planaria.



**Watch Video Solution**

**9.** Why cannot multicellular complex organism show power of regeneration?



**Watch Video Solution**

**10.** Draw a well labelled diagram to show the process of fertilization in flower.



[Watch Video Solution](#)

**11.** What are the different secondary sexual characteristics of males and females?



[Watch Video Solution](#)

**12.** Draw a neat diagram of female reproductive system and label the following:

(a) Part where eggs are formed.

(b) Site of fertilization.



(c) Place of implantation.

(d) Place for entry of sperms.



[Watch Video Solution](#)

**13.** What happens in case an egg fails to fertilize?



[Watch Video Solution](#)

**14.** Give one method to prevent both STD and unwanted pregnancy.



[Watch Video Solution](#)

**15.** Mrs. Seghal's family was very happy after the birth of their second child. Her friend, Mrs. Raman suggested her to undergo tubectomy.

What is tubectomy?



[Watch Video Solution](#)

**16.** Mrs. Seghal's family was very happy after the birth of their second child. Her friend, Mrs.

Raman suggested her to undergo tubectomy.

Why do you think Mrs. Raman gave her such a suggestion?



[Watch Video Solution](#)

**17.** Mrs. Seghal's family was very happy after the birth of their second child. Her friend, Mrs. Raman suggested her to undergo tubectomy. Can tubectomy prevent spread of sexually transmitted diseases?



[Watch Video Solution](#)

**18.** Mrs. Seghal's family was very happy after the birth of their second child. Her friend, Mrs. Raman suggested her to undergo tubectomy. Give reason for your answer. Why is there a need of adopting contraceptive methods?



**Watch Video Solution**

**Reproduction Multiple Choice Questions**

1. When an organism breaks into a number of parts and each part develop into an individual, it is called :

A. Regeneration

B. Budding

C. Binary fission

D. Spore formation

**Answer: A**



**Watch Video Solution**

2. How many chromosomes are present in a ovum of human being?

A. 29

B. 21

C. 22

D. 23

**Answer: D**



**Watch Video Solution**

**3.** The number of chromosomes in parents and offsprings of a particular species remains constant. due to

A. doubling of chromosomes after zygote formation

B. halving of chromosomes during gamete formation

C. doubling of chromosomes after gamete formation

D. halving of chromosomes after gamete formation

**Answer: B**



**Watch Video Solution**

4. In a flower, the parts that produce male and female gametes (germ cells) are

A. stamen and anther

B. filament and stigma



C. anther and ovary

D. stamen and style

**Answer: C**



**Watch Video Solution**

5. In the list of organisms given below, those that does not reproduce by the asexual method are \_\_\_\_\_

A. spirogyra

B. dog

C. yeast

D. amoeba

**Answer: B**



**Watch Video Solution**

**6. Assertion (A):** Simple reproductive methods cannot work for all multicellular organisms.

**Reason (R):** Multicellular organisms cannot simply divide cell by cell.

A. Both A and R are true and R is the correct explanation of A.

B. Both A and R are true but R is not the correct explanation of A.

C. A is true but R is false.

D. A is false but R is true.

**Answer: A**



**Watch Video Solution**

7. Assertion (A): The process of DNA copying does not result in variations.

Reason (R): No biochemical reaction is absolutely reliable

A. Both A and R are true and R is the correct explanation of A.

B. Both A and R are true but R is not the correct explanation of A.

C. A is true but R is false.

D. A is false but R is true.

**Answer:**



**Watch Video Solution**

**8.** Vegetative propagation refers to formation of new plants from

- A. Stem, leaves and flowers
- B. Stem, roots and flowers
- C. Stem, roots and leaves
- D. Stem, flowers and fruits

**Answer: C**



**Watch Video Solution**

9. Which of the following is the correct sequence of events of sexual reproduction in a flower?

A. Pollination, fertilization, seedling, embryo

B. Seedling, embryo, fertilization, pollination

C. Pollination, fertilization, embryo,  
seedling

D. Embryo seedling, fertilization,  
pollination

**Answer: C**



**Watch Video Solution**

**Heredity And Evolution Very Short Answer**

1. What is the full name of the father of genetics?



**Watch Video Solution**

2. What is gene? Where are genes located?



**Watch Video Solution**

3. What is the function of a gene?



**Watch Video Solution**



4. Newly formed DNA copies may not be identical at times. Give reason.



[Watch Video Solution](#)

5. What is speciation ?-



[Watch Video Solution](#)

6. What is the phenotypic ratio obtained in Mendel's dihybrid cross?



[Watch Video Solution](#)

7. Mention any two forms of wild cabbage.



[Watch Video Solution](#)

8. Who had proposed the theory of natural selection?



[Watch Video Solution](#)

## 9. INHERITED TRAITS



[Watch Video Solution](#)

## 10. INHERITED TRAITS



[Watch Video Solution](#)

**11. Assertion:** Evolution is called as organic evolution.

**Reason:** Evolution involves the living organisms.

A. Both assertion (A) and reason (R) are true and reason (R) is the correct explanation of assertion (A).

B. Both assertion (A) and reason (R) are true but reason (R) is not the correct explanation of assertion(A).

C. Assertion(A)is true but reason(R)is false.

D. Assertion(A) is false but reason(R)is true.

**Answer: A**



**Watch Video Solution**

**12.** Choose the correct option: The presence of homologous organs in different animals indicates

A. independent evolution

B. common ancestry

C. different ancestry

D. hierarchy

**Answer: B**



**Watch Video Solution**

**13.** Choose the correct option:

A farmer saves the seeds from his best maize crop plants to sow for next year's crop.

- A. artificial selection
- B. genetic engineering
- C. Natural selection
- D. variation

**Answer: A**



**Watch Video Solution**

**14.** The phenomenon by which a new set of population is formed from the change in frequency of some genes is called \_\_\_\_\_



[Watch Video Solution](#)

## HereditY And Evolution Short Answer

1. What are the different ways in which individuals with a particular trait may increase in a population?



[Watch Video Solution](#)



2. List two differences between acquired traits and inherited traits by giving an example of each.



[Watch Video Solution](#)

3. Define the term evolution. "Evolution cannot be equated with progress". Justify this statement



[Watch Video Solution](#)

4. What are fossils? How are they formed?

Describe in brief two methods of determining the age of fossils.



[Watch Video Solution](#)

5. Will geographical isolation be a major factor in the speciation of a self-pollinating plant species? Why or why not?



[Watch Video Solution](#)

6. Will geographical isolation be a major factor in the speciation of an organism that reproduces asexually? Why or why not?



**Watch Video Solution**

7. What factors could lead to the rise of a new species?



**Watch Video Solution**

**8.** How is the sex of the child determined in human beings?



**Watch Video Solution**

**9.** Can the wing of a butterfly and the wing of a bat be considered homologous organs? Why or why not?



**Watch Video Solution**

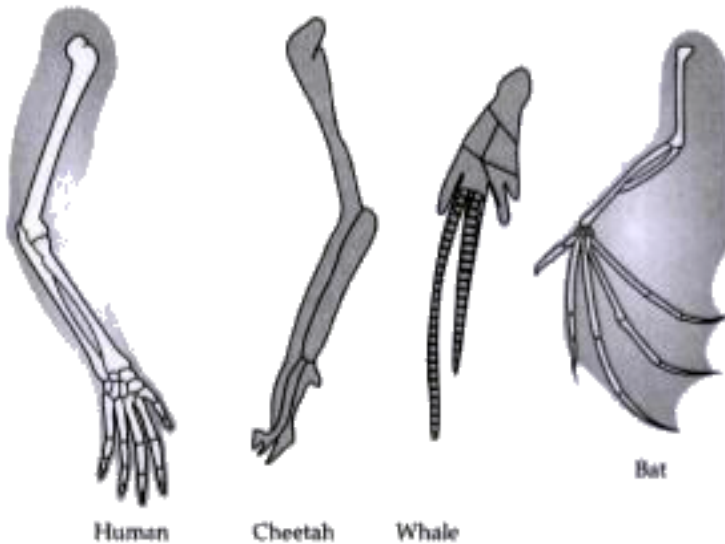
**10.** Mention the total number of chromosomes along with the sex chromosomes that are present in a human female and a human male. Explain how in sexually producing organisms the number of chromosomes in the progeny remains the same as that of the parents.



**Watch Video Solution**

**11.** What do you think is depicted in the figure below? What information do they give us

about evolution? Both butterfly and birds have wings for flight. Are they closely related to each other with ?Why?



[Watch Video Solution](#)

**Heredity And Evolution Long Answer**

1. Mention the function of cellular DNA. Taking tallness as a characteristic for a plant, explain how proteins control the characteristic.



[Watch Video Solution](#)

2. A group of grass hoppers - some green and some brown lived in grassland having dry bushes and dry grass.

Which one would normally be picked up by predatory birds and why?



[Watch Video Solution](#)

3. A group of grass hoppers - some green and some brown lived in grassland having dry bushes and dry grass.

Population of which grasshopper will increase?



[Watch Video Solution](#)

4. A group of grass hoppers - some green and some brown lived in grassland having dry



bushes and dry grass.

Name this phenomenon



**Watch Video Solution**

5. List the steps involved in the formation of new species.



**Watch Video Solution**

6. Explain giving examples how artificial selection has helped in the formation of newer

varieties of cauliflower



**Watch Video Solution**

7. How is the sex of the child determined in human beings?



**Watch Video Solution**

8. Given reason why acquired characters are not inherited.



**Watch Video Solution**

**9.** Evolution has exhibited a greater stability of molecular structure when compared with morphological structures. Comment on the statement and justify your opinion.



**Watch Video Solution**

**10.** Caucasoid (white), Mongoloid (yellow), Negroid (black) and Australoid might have

evolved from a common ancestor. Provide a few evidences in support of this view.



**Watch Video Solution**

**11.** How sexual reproduction creates genetic variation which is needed for better adaptation to changing environment? Provide a suitable explanation.



**Watch Video Solution**

12. Does geographical isolation of individuals of a species lead to formation of a new species? Provide a suitable explanation.



[Watch Video Solution](#)

## Hereditiy And Evolution Multiple Choice Questions

1. Human being belongs to the species of

a) Homo habilis

b) Hominidae

c) Homo sapiens

d) Homo erectus

A. Homo habilis

B. Hominidae

C. Homo sapiens

D. Homo erectus

**Answer: C**



**Watch Video Solution**

2. Which of the following is not a direct conclusion that can be drawn from Mendel's Experiment ?

a) Only one parental trait is expressed

b) Two copies of each trait is inherited in sexually reproducing organism

c) For recessive trait to be expressed, both copies should be identical

d) Natural selection can alter frequency of an inherited trait.

A. Only one parental trait is expressed

- B. Two copies of each trait is inherited in sexually reproducing organism
- C. For recessive trait to be expressed, both copies should be identical
- D. Natural selection can alter frequency of an inherited trait.

**Answer: D**



**Watch Video Solution**



3. Name the organ analogous to the wings of birds

A. Forelimb of human

B. wings of insect

C. Fore-leg of horse

D. none of these

**Answer: B**



**Watch Video Solution**

4. Which of the following is not a direct conclusion that can be drawn from Mendel's Experiment?

A. Only one parental trait is expressed

B. Two copies of each trait are inherited in sexually reproducing organism

C. For recessive trait to be expressed, both copies should be identical

D. Natural selection can alter frequency of an inherited trait

**Answer: D**



**Watch Video Solution**

5. What is the probability that the male progeny will be a boy?

A. 50 %

B. 56 %

C. 47.43 %

D. It varies

**Answer: A**



**Watch Video Solution**

6. With whom you can associate theory of evolution?

A. Charles Darwin

B. Mendel

C. Stanley Miller

D. Harold Urey

**Answer: A**



**Watch Video Solution**

7. Harish went with his mother to the market and bought carrots, tomatoes, radish and potato from a vegetable vendor. Which of these vegetables represent homologous structures?

A. Carrot and potato

B. Potato and radish

C. Radish and carrot

D. Tomato and potato

**Answer: C**



**Watch Video Solution**

## Environment Very Short Answer

1. List two natural ecosystems.



**Watch Video Solution**

2. Which gas is produced due to incomplete combustion of fuel?



**Watch Video Solution**

3. Why is excessive use of CFCs a cause of concern?



**Watch Video Solution**

4. What is 10 per cent law ?



**Watch Video Solution**

**5. What is an ecosystem ?**



**Watch Video Solution**

**6. Some substances cannot be broken down in nature. What are they called?**



**Watch Video Solution**



7. What has led to formation of ozone holes?



[Watch Video Solution](#)

8. A food web



[Watch Video Solution](#)

9. Why is flow of energy in a food chain considered unidirectional?



[Watch Video Solution](#)

**10. Assertion:**A network of food chain existing together in an ecosystem is known as food web.

**Reason:** An animal like kite cannot be a part of a food web.

A. Both assertion (A) and reason (R) are true and reason (R) is the correct explanation of assertion (A).

B. Both assertion (A) and reason (R) are true but reason (R) is not the correct explanation of assertion(A).

C. Assertion (A) is true but reason (R ) is false.

D. Assertion (A) is false but reason (R ) is true.

**Answer: C**



**Watch Video Solution**

**11. Assertion :** Green plants of the ecosystem are the transducers.

**Reason :** Producers trap the radiant energy of the sun and change it into chemical energy.

A. Both assertion (A) and reason (R) are true and reason (R) is the correct explanation of assertion (A).

B. Both assertion (A) and reason (R) are true but reason (R) is not the correct explanation of assertion(A).

C. Assertion (A) is true but reason (R ) is false.

D. Assertion (A) is false but reason (R ) is true.

**Answer: A**



**Watch Video Solution**

**12.** Replacing of plastic cups by the paper cups for selling tea on train is preferred because

A. paper cups are more aesthetic

B. paper cups are more hygienic

C. paper cups are cheaper

D. paper cups are biodegradable and eco-friendly

**Answer: D**



**Watch Video Solution**

**13.** Trophic levels are formed by

A. only plants

B. only animals

C. only carnivores

D. organisms linked in foodchain

**Answer: D**



**Watch Video Solution**

**14.** Gardens and cropfields are examples of

-----



 [Watch Video Solution](#)

15. The contamination of air by adding gases, smoke and ash is called \_\_\_\_\_



[Watch Video Solution](#)

## Environment Long Answer

1. What is biological magnification? Will the levels of this magnification be different at different levels of the ecosystem?





[Watch Video Solution](#)

2. What are the different methods of waste disposal?



[Watch Video Solution](#)

3. "Vegetarian food habits can sustain a larger number of people." Justify the statement in terms of food chain.



[Watch Video Solution](#)

4. State one important function of ozone layer in the atmosphere. How is it formed there? Which compounds are responsible for the depletion of ozone layer? How do these compounds enter into the atmosphere



[Watch Video Solution](#)

5. List three environmental friendly practices which you would like to form a part of your daily habits giving justification for each.



[Watch Video Solution](#)

6. Monika was observing a lizard on the wall which chased an insect and ate it. She felt that lizard is cruel and ugly. Suddenly the lizard fell and was eaten by a cat. She started thinking, how organisms are connected to each other for their food? What is a food chain? Will the world be a better place without lizards?

Make a food chain of five organisms.

To which trophic level does the lizard belong



[Watch Video Solution](#)

7. Differentiate between autotrophs, heterotrophs and decomposers and give one example of each



[Watch Video Solution](#)

## Environment Short Answer

1. We often observe domestic waste decomposing in the bylanes of residential

colonies. Suggest ways to make people realise that the improper disposal of waste is harmful to the environment.



[Watch Video Solution](#)

2. The activities of man had adverse effects on all forms of living organisms in the biosphere. Unlimited exploitation of nature by man disturbed the delicate ecological balance between the living and non-living components of the biosphere. The unfavourable conditions

created by man himself threatened the survival not only of himself but also of the entire living organisms on the mother earth. One of your classmates is an active member of 'Eco club' of your school which is creating environmental awareness amongst the school students, spreading the same in the society and also working hard for preventing environmental degradation of the surroundings.

Why is it necessary to conserve our environment?



**Watch Video Solution**

**3.** The activities of man had adverse effects on all forms of living organisms in the biosphere. Unlimited exploitation of nature by man disturbed the delicate ecological balance between the living and non-living components of the biosphere. The unfavourable conditions created by man himself threatened the survival not only of himself but also of the entire living organisms on the mother earth. One of your classmates is an active member of 'Eco club' of your school which is creating

environmental awareness amongst the school students, spreading the same in the society and also working hard for preventing environmental degradation of the surroundings.

State the importance of green and blue dust bins in the safe disposal of the household waste.



**Watch Video Solution**



4. The activities of man had adverse effects on all forms of living organisms in the biosphere. Unlimited exploitation of nature by man disturbed the delicate ecological balance between the living and non-living components of the biosphere. The unfavourable conditions created by man himself threatened the survival not only of himself but also of the entire living organisms on the mother earth. One of your classmates is an active member of 'Eco club' of your school which is creating environmental awareness amongst the school

students, spreading the same in the society and also working hard for preventing environmental degradation of the surroundings.

List two values exhibited by your classmate who is an active member of Eco- club of your school.



**Watch Video Solution**

5. We do not clean ponds or lakes, but an aquarium needs to be cleaned. Why ?



[Watch Video Solution](#)

6. Accumulation of harmful chemicals in our bodies can be avoided. Explain how this can be achieved ?



[Watch Video Solution](#)

7. What are the problems caused by the non-biodegradable wastes that we generate?



[Watch Video Solution](#)

**8.** Why is damage to the ozone layer a cause for concern? What steps are being taken to limit this damage?



**Watch Video Solution**

**9.** Differentiate between food chain and food web with one example.



**Watch Video Solution**

**10.** If all the waste we generate is biodegradable, will this have no impact on the environment?



**Watch Video Solution**

**11.** What is ozone and how does it affect any ecosystem?



**Watch Video Solution**

**12.** What is the role of decomposers in the ecosystem?



**Watch Video Solution**

**13.** What are trophic levels ? Give an example of a food chain and state the different trophic levels in it.



**Watch Video Solution**

14. Why are some substances biodegradable and some non-biodegradable?



[Watch Video Solution](#)

## Environment Multiple Choice Questions

1. Accumulation of non-biodegradable pesticides in the food chain in increasing amount at each higher trophic level is known as :

A. Eutrophication

B. Pollution

C. Bio-magnification

D. Accumulation

**Answer: C**



**Watch Video Solution**

2. In the given food chain, suppose the amount of energy at fourth trophic level is 5 kJ, what will be the energy available at the



producer level?

Grass →

Grasshopper →

Frog → Snake →

Hawk

A. 5 kJ

B. 50 kJ

C. 500 kJ

D. 5000 kJ

**Answer: D**



3. Which one of the following is an artificial ecosystem ?

A. Pond

B. Crop field

C. Lake

D. Forest

**Answer: B**



4. Which of the following is not an example of abiotic factors

A. Light

B. Plants

C. Heat

D. Temperature

**Answer: B**



**Watch Video Solution**

5. Which of the following are environment-friendly practices?

A. Carrying cloth-bags to put purchases in while shopping

B. Switching off unnecessary lights and fans

C. Walking to school instead of getting your mother to drop you on her scooter

D. All of the above

**Answer: D**



**Watch Video Solution**

6. Which of the following constitute a food-chain?

- A. Grass, wheat and mango
- B. Grass, goat and human
- C. Goat, cow and elephant
- D. Grass, fish and goat

**Answer: B**



**Watch Video Solution**