



BIOLOGY

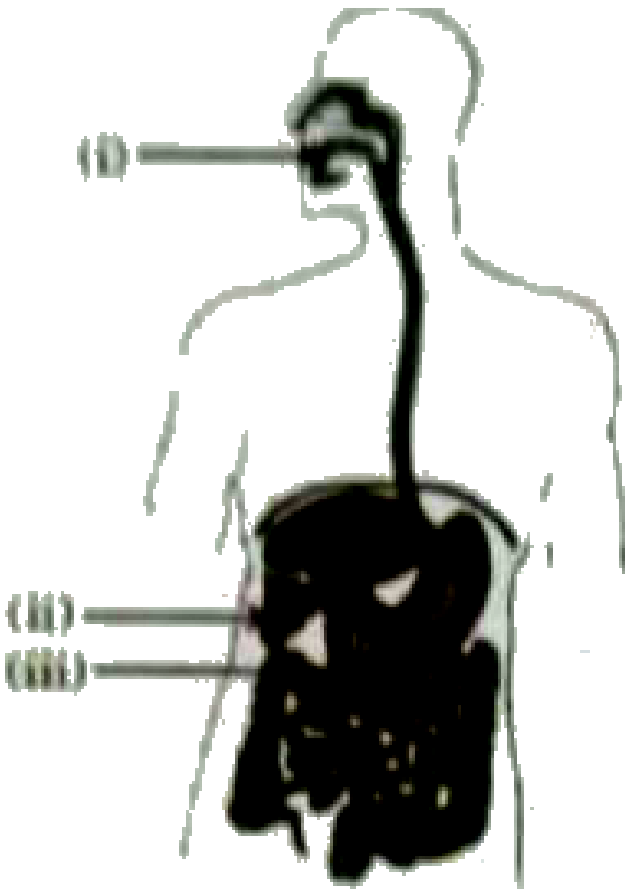
BOOKS - X BOARDS

QUESTION PAPER 2022 TERM 1 SET 2

Section A

1. In Human Alimentary canal, the specific enzyme/juice secreted in locations (i), (ii) and

(iii) are :



A. (i) Amylase (ii) Pepsin (iii) Bile

B. (i) Amylase (ii) Bile (iii) Trypsin

C. (i) Lipase (ii) Amylase (iii) Pepsin

D. (i) Trypsin (ii) Bile (iii) Amylase

Answer:



Watch Video Solution

2. The sequence of anaerobic respiration in our muscle cells during heavy exercise is :

A. Glucose $\xrightarrow{\text{Cytoplasm}}$ Pyruvate $\xrightarrow{\text{Muscle cells}}$

Lactice acid + Energy

B. Glucose $\xrightarrow{\text{Mitochondria}}$ Pyruvate $\xrightarrow{\text{Muscle cells}}$

Carbon dioxide + Water

C. Glucose $\xrightarrow{\text{Cytoplasm}}$ Pyruvate $\xrightarrow{\text{Muscle cells}}$

Ethanol + Carbon dioxide

D. Glucose $\xrightarrow{\text{Mitochondria}}$ Pyruvate $\xrightarrow{\text{Muscle cells}}$

Ethanol + Lactic acid

Answer:



Watch Video Solution

3. The separation of the right side and the left side of human heart is useful to :

A. Keep oxygenated blood from mixing with deoxygenated blood

B. Allow a slow supply of oxygen in the body

C. Supply energy to animals with low energy needs

D. Often change their body temperature

Answer:



Watch Video Solution

4. In spring , sugar stored in root or stem tissue of plants is transported to the buds for :

A. The energy needs of the buds of grow

B. Temperature regulation

C. Balancing the storage in different organs

D. Diffusion process

Answer:



Watch Video Solution

5. The energy released during cellular respiration is used to synthesize :

A. Ribosomes

B. RBC

C. ATP

D. Mitochondria

Answer:



Watch Video Solution

6. Upward movement of water in tall trees is due to

A. Translocation

B. Excretion

C. Photosynthesis

D. Transpiration

Answer:



Watch Video Solution

Section B

1. Assertion (A) : The rate of breathing in aquatic organisms is much slower than that seen in terrestrial organisms.

Reason (R) : The amount of oxygen dissolved

in water is very low as compared to the amounts of oxygen in air.

A. Both Assertion (A) and Reason (R) are true and Reason (R) is the correct explanation of Assertion (A).

B. Both Assertion (A) and Reason (R) are true, but Reason (R) is not the correct explanation of Assertion (A)

C. Assertion (A) is true, but Reason (R) is false.

D. Assertion (A) is false, but Reason (R) is true.

Answer:



Watch Video Solution

2. The function not performed by villi is :

A. To increase the surface area for absorption

B. To ensure rich supply of blood vessels

C. Absorption of food

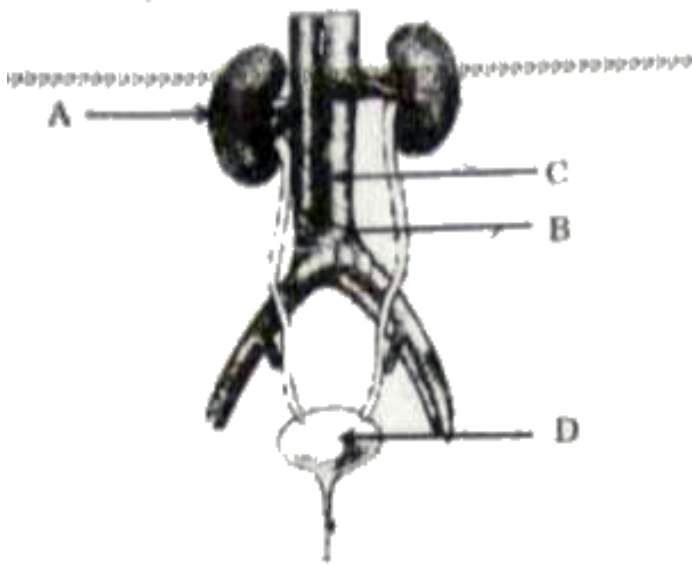
D. Egestion of food

Answer:



Watch Video Solution

3. In the given diagram, A, B, C and D respectively are



A. A-Left kidney, B - Aorta, C - Vena cava: D -
Urethra

B. A-Left kidney, B - Vena cava: C - Aorta: D -
Urinary bladder

C. A - Right kidney, B - Aorta, C - Ureter: D -
Urethra

D. A- Right kidney, - Vena cava, C - Aorta, D -
Urinary bladder

Answer:



Watch Video Solution

4. Thin walled blood vessels are called :

A. Aorta

B. Capillaries

C. Arteries

D. Vena cava

Answer:



Watch Video Solution

5. The function of the lining of mucus in the nasal passage of human beings is to:

- A. Increase the temperature of inhaled air
- B. Move the air in and out
- C. Filter the air that we breathe in

D. Absorb oxygen from the air

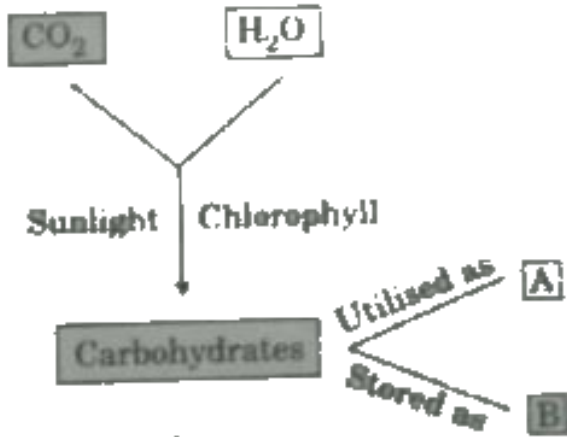
Answer:



Watch Video Solution

6. In the following flow chart showing autotrophic nutrition in green plants, A and B

respectively are :



A. Oxygen and energy

B. Starch and oxygen

C. Energy and starch

D. Oxygen and water

Answer:

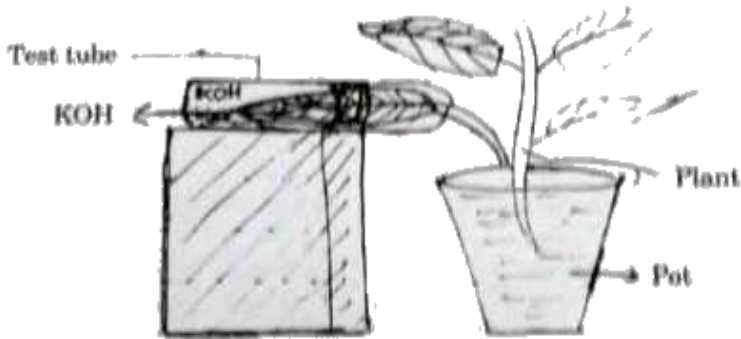


Watch Video Solution

Section C

1. Activity: Take a healthy potted plant with elongated leaves. Select a leaf and insert about one half of this leaf in a test tube containing KOH and make it air tight. Place the set -up in sun for two hours. Take out the leaf from the test tube and dip it in boiling water for a few minutes. Put this leaf in a beaker with alcohol and boil it in a water bath. Wash the

leaf with water and then dip the leaf in iodine solution for a few minutes. The portion of the leaf dipped in KOH solution will not show any change when dipped in iodine solution.



The function of KOH taken in the test tube is to absorb-

A. Released water vapours

B. Released CO_2

C. Released O_2

D. Chlorophyll

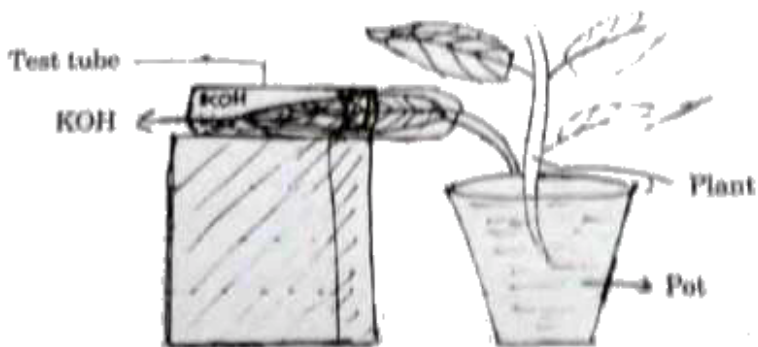
Answer:



Watch Video Solution

2. Activity: Take a healthy potted plant with elongated leaves. Select a leaf and insert about one half of this leaf in a test tube containing KOH and make it air tight. Place the set -up in sun for two hours. Take out the leaf

from the test tube and dip it in boiling water for a few minutes. Put this leaf in a beaker with alcohol and boil it in a water bath. Wash the leaf with water and then dip the leaf in iodine solution for a few minutes. The portion of the leaf dipped in KOH solution will not show any change when dipped in iodine solution.



On the basis of this activity, we may conclude

that the essential factor for photosynthesis is

:

A. Carbon dioxide

B. Oxygen

C. Chlorophyll

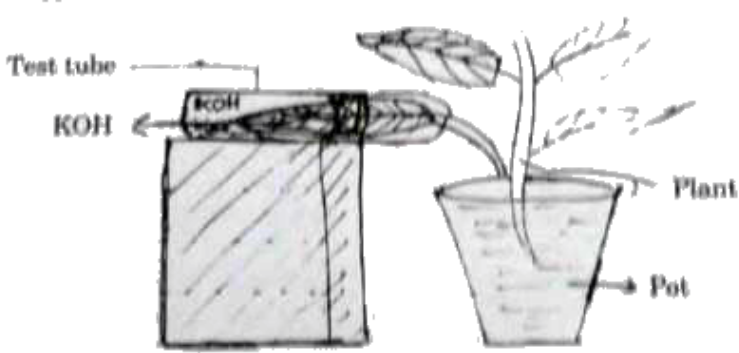
D. Water vapour

Answer:



Watch Video Solution

3. Activity: Take a healthy potted plant with elongated leaves. Select a leaf and insert about one half of this leaf in a test tube containing KOH and make it air tight. Place the set -up in sun for two hours. Take out the leaf from the test tube and dip it in boiling water for a few minutes. Put this leaf in a beaker with alcohol and boil it in a water bath. Wash the leaf with water and then dip the leaf in iodine solution for a few minutes. The portion of the leaf dipped in KOH solution will not show any change when dipped in iodine solution.



The event that does not occur in photosynthesis is:

- A. Absorption of light energy by chlorophyll
- B. Reduction of carbon dioxide to carbohydrates
- C. Oxidation of carbon to carbon dioxide

D. Conversion of light energy to chemical energy

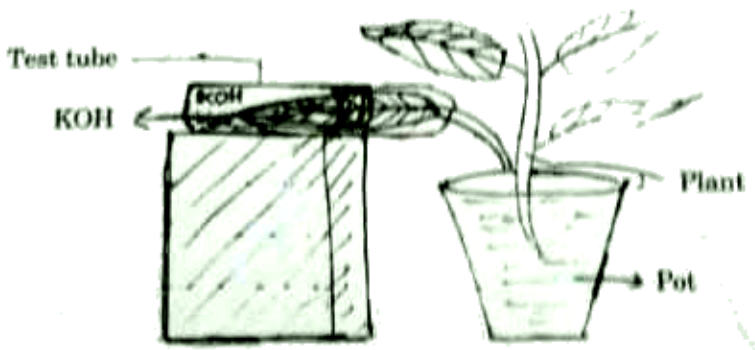
Answer:



[Watch Video Solution](#)

4. Activity: Take a healthy potted plant with elongated leaves. Select a leaf and insert about one half of this leaf in a test tube containing KOH and make it air tight. Place the set -up in sun for two hours. Take out the leaf

from the test tube and dip it in boiling water for a few minutes. Put this leaf in a beaker with alcohol and boil it in a water bath. Wash the leaf with water and then dip the leaf in iodine solution for a few minutes. The portion of the leaf dipped in KOH solution will not show any change when dipped in iodine solution.



Iodine solution gives blue-black colour with:

A. Starch

B. Proteins

C. Glucose

D. Fats

Answer:



Watch Video Solution