



BIOLOGY

BOOKS - EVERGREEN BIOLOGY (ENGLISH)

ENDOCRINE SYSTEM

Review Questions Find The Odd One Out

1. Pituitary, Thyroid, Pancreas, Adrenal and Thymus



[Watch Video Solution](#)

2. GH, ACTH, MSH, LTH, LH, FSH and TSH



[Watch Video Solution](#)

3. Find the odd one out : Mineralocorticoids,
Testosterone, Estrogen, Epinephrine and
Glucocorticoids



[Watch Video Solution](#)

4. Grave's disease, Addison's disease, Cretinism, Myxoedema and Iodine deficiency goitre



[Watch Video Solution](#)

5. Find the odd one out : Steroids, Cortisol, Testosterone, Adrenaline, Prolactin



[Watch Video Solution](#)

6. Vasopressin, Growth hormone, TSH, ACTH,
FSH



Watch Video Solution

7. Goitre, dwarfism, acromegaly, cataract.



Watch Video Solution

8. ADH, TSH, NADP, ACTH



Watch Video Solution

9. Adrenal gland, liver, thyroid gland, pituitary gland.



[Watch Video Solution](#)

10. Cortisone, Somatotropin,
Adrenocorticotrophic hormone, Vasopressin.



[Watch Video Solution](#)

11. Carbonic acid, Acetic acid, Benzoic acid,
Boric acid



Watch Video Solution

12. Saliva, Bile, Sweat, Tears.



Watch Video Solution

13. Cretinism, Myxoedema, Simple goitre,
Acromegaly.



[Watch Video Solution](#)

14. Oxytocin, Insulin, Prolactin, Progesterone.



[Watch Video Solution](#)

Review Questions

1. State whether the following statements are true or false. If false, rewrite the correct statement by changing the bold/dark word

only.

Hormones are secreted directly into the organs.



[Watch Video Solution](#)

2. State whether the following statements are true or false. If false, rewrite the correct statement by changing the bold/dark word only.

Acromegaly is caused because of the hypersecretion of GH in childhood.



[Watch Video Solution](#)

3. State whether the following statements are true or false. If false, rewrite the correct statement by changing the bold/dark word only.

Thyroid gland is known as 'Master gland of the body'.



[Watch Video Solution](#)

4. State whether the following statements are true or false. If false, rewrite the correct statement by changing the bold/dark word only.

The pituitary gland is both exocrine and endocrine in function



[Watch Video Solution](#)

5. State whether the following statements are true or false. If false, rewrite the correct

statement by changing the bold/dark word only.

Alpha cells of pancreas secrete Insulfn.



[Watch Video Solution](#)

6. State whether the following statements are true or false. If false, rewrite the correct statement by changing the bold/dark word only.

Cretinism is caused due to deficiency of adrenaline



[Watch Video Solution](#)

7. Name the endocrine cells present in the Pancreas.



[Watch Video Solution](#)

8. Name the cells of the testes that produce male hormones.



[Watch Video Solution](#)

9. Complete the following sentences with appropriate words

The secretions of endocrine glands are called..... .



[Watch Video Solution](#)

10. Complete the following sentences with appropriate words

The organs influenced by hormones are called..... .



[Watch Video Solution](#)

11. Complete the following sentences with appropriate words

..... glands are partly exocrine and partly endocrine.



[Watch Video Solution](#)

12. Complete the following sentences with appropriate words

..... is called gland of emergency.



 [Watch Video Solution](#)

13. Complete the following sentences with appropriate words

Testosterone is secreted by c.....ells of testis



[Watch Video Solution](#)

14. Complete the following sentences with appropriate words

Deficiency of..... . causes diabetes mellitus



[Watch Video Solution](#)

15. Complete the following sentences with appropriate words

..... Is a temporary endocrine gland



[Watch Video Solution](#)

16. Complete the following sentences with appropriate words

PTH controls calcium and..... . balance



Watch Video Solution

17. Complete the following sentences with appropriate words

Hyposecretion of thyroxine causes cretinism in and in adults.



Watch Video Solution

18. Complete the following sentences with appropriate words

Relaxin is secreted by.....



Watch Video Solution

19. Complete the following sentences with appropriate words

Intermediate lobe of pituitary secretes the hormone called..... .



Watch Video Solution

20. Define the following :

Target organ



Watch Video Solution

21. Define the following :

Tetany



Watch Video Solution

22. Define the following :

Endocrine gland



Watch Video Solution

23. Define the following :

Acromegaly



Watch Video Solution

24. Define the following :

Dwarfism



Watch Video Solution

25. Define the following :

Hyperglycemia



Watch Video Solution

26. Differentiate between the following:

Exocrine and Endocrine glands.



Watch Video Solution

27. Differentiate between the following:

Hormone and an Enzyme.



Watch Video Solution

28. Differentiate between the following:

Nervous and Hormonal control.



Watch Video Solution

29. Differentiate between the following:

Dwarfism and Cretinism



Watch Video Solution

30. Differentiate between the following:

Gigantism and Acromegaly.



Watch Video Solution

31. Differentiate between the following:

Eunuchoidism and Adrenal virilism.



Watch Video Solution

32. Differentiate between the following:

Acromegaly and Cretinism (symptoms)



Watch Video Solution

33. Diabetes mellitus and diabetes insipidus



Watch Video Solution

34. Differentiate between the following:

Vasopressin and Insulin (Deficiency disorder)



[Watch Video Solution](#)

35. Comment upon the following :

Pituitary gland is the "master gland" of the body.



[Watch Video Solution](#)

36. Comment upon the following :

Adrenaline is known as hormone of emergency.





[Watch Video Solution](#)

37. Comment upon the following :

People living in hilly regions usually suffer from simple goitre.



[Watch Video Solution](#)

38. What do you mean by heterocrine gland?

Name the various heterocrine glands.



[Watch Video Solution](#)

39. How are the following disorders caused :
Cretinism, Addison's disease, Acromegaly,
Diabetes insipidus, Dwarfism?



Watch Video Solution

40. Some women develop facial hair. What may
be the cause for it ?



Watch Video Solution

41. There are two kinds of diabetes. Mention their symptoms and causes.



Watch Video Solution

42. What is the chemical nature of hormones?



Watch Video Solution

43. A temporary endocrine gland in the human body is



[Watch Video Solution](#)

44. Describe the hormones and functions of adrenal medulla. Why are they called glands of emergency?



[Watch Video Solution](#)

45. Describe the hormones of thyroid and adrenal glands.



[Watch Video Solution](#)

46. Give the functions of adrenal and thyroxine



Watch Video Solution

47. Describe the functions of aldosterone.



Watch Video Solution

48. How is water and salt balance maintained in the body?





[Watch Video Solution](#)

49. Name the hormone that releases glucose into the blood



[Watch Video Solution](#)

50. The given diagram is an outline of human body showing the position of certain organs. In this diagram

(i) Name the parts labelled 1-5.

(ii) Name the hormone released from 1 that

influences the working of part 2.

(iii) How do part labelled as 3 differs from parts labelled as 1 and 2 in general? Name the endocrine cells present in part 3.

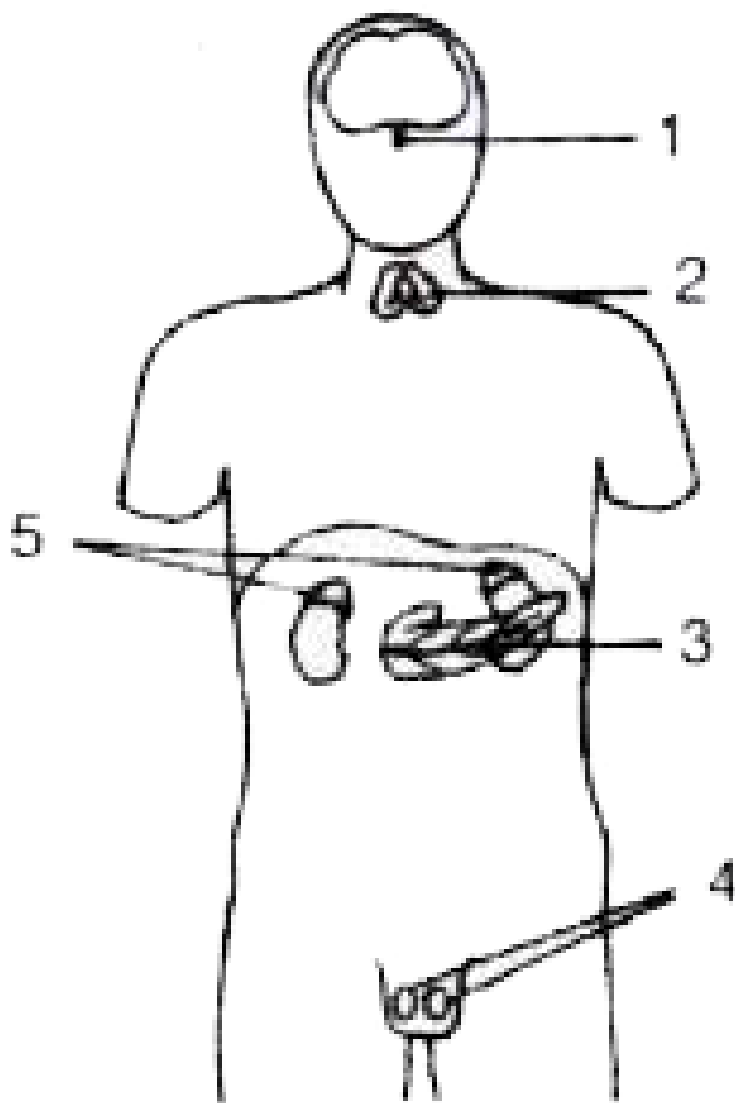
(iv) What will happen if the part labelled as 4 is removed ?

(11) Name the hormones released by part 5.

(VI) Why the part labelled as 1 called master gland? Which part of the forebrain controls the gland labelled 1 ?

(vii) Name the gland that secretes 'emergency

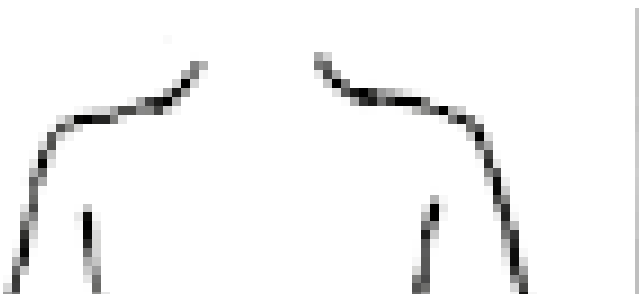
hormone.

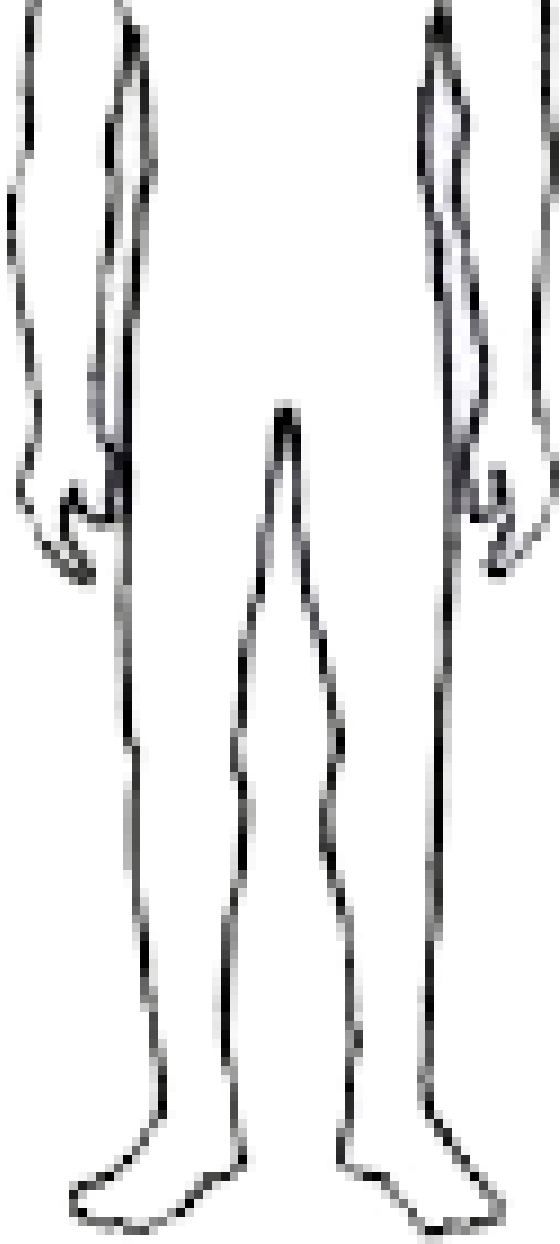


Watch Video Solution

51. (i) Given alongside is the outline of the human body. Redraw the same and then place the following organs in their correct position and label them.

1. Thyroid glands
2. Windpipe
3. Diaphragm
4. Right and left lung
5. Right and left kidney
6. Adrenal glands





(ii) Name the hormone produced by the thyroid gland and state its functions in the

body.

(iii) What would a child suffer from if there was hyposecretion of this gland?



[Watch Video Solution](#)

52. Explain (i) Tropic hormone.

(ii) Hormone

(iii) Diabetes insipidus



[Watch Video Solution](#)

53. Name the hormones which lead to the following conditions :

Diabetes Mellitus



Watch Video Solution

54. Name the hormones which lead to the following conditions :

Growth of beard in women



Watch Video Solution

55. Name the hormones which lead to the following conditions :

Myxoedema



Watch Video Solution

56. Name the hormones which lead to the following conditions :

Gigantism



Watch Video Solution

57. Name the hormones which lead to the following conditions :

Exophthalmic goitre.



Watch Video Solution

58. Given below is statement question followed by four choices. Select and rewrite the correct answer to the given statement from the four choices given below the statement

Insulin is secreted by :

Beta cells of pancreas



[Watch Video Solution](#)

59. Given below is statement question followed by four choices. Select and rewrite the correct answer to the given statement from the four choices given below the statement

Insulin is secreted by :

Beta cells of pancreas



[Watch Video Solution](#)

60. Given below is statement question followed by choices. Select and rewrite the correct answer to the given statement given below the statement

Insulin is secreted by :

Delta cells of pancreas



[Watch Video Solution](#)

61. Insulin is secreted by :



[Watch Video Solution](#)

62. Give technical biological term for the following:

(I) Hormone which stimulate other endocrine glands to produce their specific hormones.



[Watch Video Solution](#)

63. Give technical biological term for the following:

(ii) Hormones which regulate the secretion of other endocrine glands.



[Watch Video Solution](#)

64. Complete the following table by filling in the blanks 1 to 10 with the appropriate terms :

GLAND	SECRETION	FUNCTION/EFFECT ON BODY
1	Testosterone	2
Adrenal	3	4
5	6	Influences metabolism of cells
Lacrimal	7	8
9	Growth hormone	10



[Watch Video Solution](#)

65. Name the hormone responsible for the following functions

Increase in heartbeat.



Watch Video Solution

66. Name the hormone responsible for the following functions

Maintains glucose level in the blood.



Watch Video Solution

67. Name the hormone responsible for the following functions

Converting glycogen to glucose



Watch Video Solution

68. Name the hormone responsible for the following functions

Regulates basal metabolism.



Watch Video Solution

69. Name the hormone responsible for the following functions

Ossification of bones.



Watch Video Solution

70. Name the hormone responsible for the following functions

Prepares the body during emergency.



Watch Video Solution

71. Name the hormone responsible for the following functions

Responsible for normal growth of the whole body.



[Watch Video Solution](#)

72. Name the hormone responsible for the following functions

Regulates the functioning of the male and female reproductive organs.





[Watch Video Solution](#)

73. Name the hormone responsible for the following functions

Increased reabsorption of water in the kidneys.



[Watch Video Solution](#)

74. Name the hormone responsible for the following functions

Increased blood supply to muscles.



[Watch Video Solution](#)

75. Name the hormone responsible for the following functions

Beta cell of pancreas (function).



[Watch Video Solution](#)

76. Name the hormone responsible for the following functions

Name the hormone secreted by islet of Langerhans.



[Watch Video Solution](#)

77. Name the hormone responsible for the following functions

Name the pituitary hormone which stimulates contraction of uterus during child birth.



[Watch Video Solution](#)

78. Give the exact location of the following :

Pituitary gland.



Watch Video Solution

79. Give the exact location of the following :

Thyroid gland



Watch Video Solution

80. Give the exact location of the following :

Islet of Langerhans



Watch Video Solution

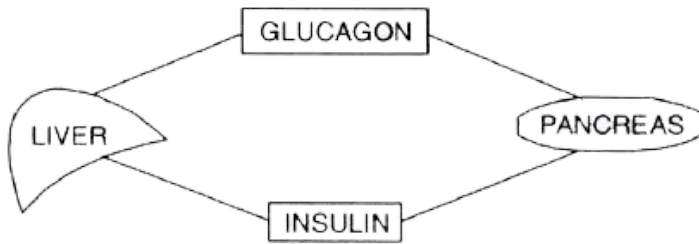
81. Give the exact location of the following :

Adrenal gland



Watch Video Solution

82. Study the diagram given below and then answer the questions that follow:



(i) Name the cells of the pancreas that produce (a) glucagon (b) insulin.

(ii) State the main function of (a) glucagon (b) insulin.

(iii) Why is the pancreas referred to as an exo-endocrine gland ?

(iv) Why is insulin not given orally but is

injected into the body ?

(vj) What is the technical term for the cells of the pancreas that produce endocrine hormones?

(vi) Where in the body is the pancreas located?



[Watch Video Solution](#)

83. Complete the following table by filling the blanks 1 to 8 with appropriate terms.

S.No.	Gland	Secretion	Function/Effect on body
1.	Thyroid	1	2
2.	3	Vasopressin	4
3.	5	6	Promotes glucose utilization by the body cells.
4.	Adrenal medulla	7	8



[Watch Video Solution](#)

84. The gland which secretes both hormone and enzyme is the:

A. pituitary

B. Pancreas

C. Thyroid

D. Adrenal

Answer:



Watch Video Solution

85. Cretinism and myxoedema are due to :

- A. Hypersecretion of thyroxine
- B. Hypersecretion of growth hormone
- C. Hyposecretion of thyroxine
- D. Hyposecretion of growth hormone.

Answer:



Watch Video Solution

86. Hyposecretion of growth hormone.

- A. Hyposecretion of Thyroxine.
- B. Hyposecretion of Growth hormone
- C. Hypersecretion of Thyroxine
- D. Hypersecretion of Growth hormone

Answer:



[Watch Video Solution](#)

87. Expand the following biological abbreviation :

(I) ACTH and TSH

(ii) TSH



[Watch Video Solution](#)

88. Choose the ODD one out of the following terms given and name the CATEGORY to which

the others belong :

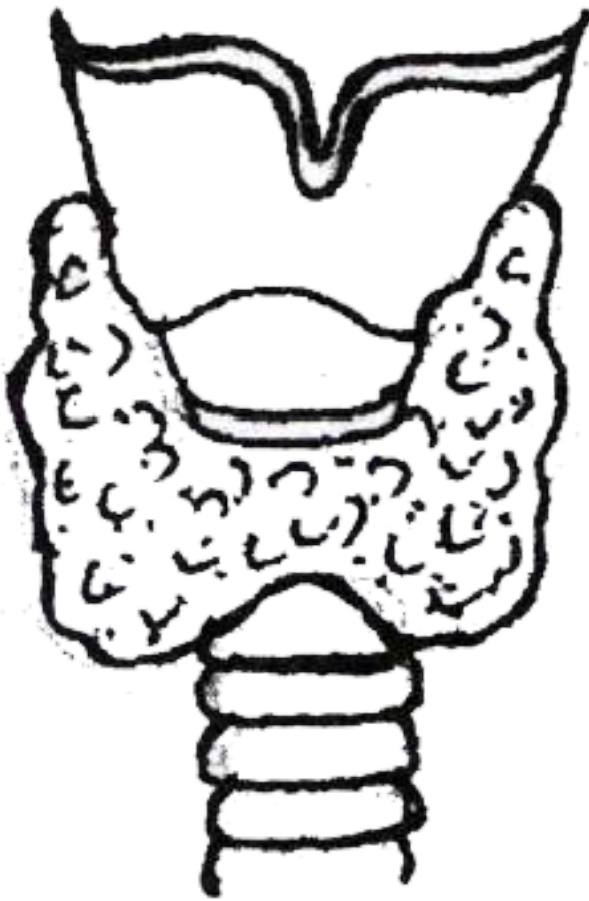
(I) ACTH, TSH, ADH, FSH

(iii) Insulin, Adrenaline, Pepsin, Thyroxine.



[Watch Video Solution](#)

89. The diagram given below represents the location and structure of an endocrine gland. Study the same and answer the questions that follow:



(i) Name the endocrine gland shown in the diagram.

(ii) Name the secretion of the gland which regulates basal metabolism

(iii) Name the mineral element required for the synthesis of the above mentioned hormone.

(iv) Name the disease caused due to undersecretion of the above mentioned hormone in children.

(v) Name the disease caused due to hypersecretion of the above mentioned hormone .



Watch Video Solution

90. Give biological reason for the following statement: Some women have facial hair like beard and moustache.



Watch Video Solution

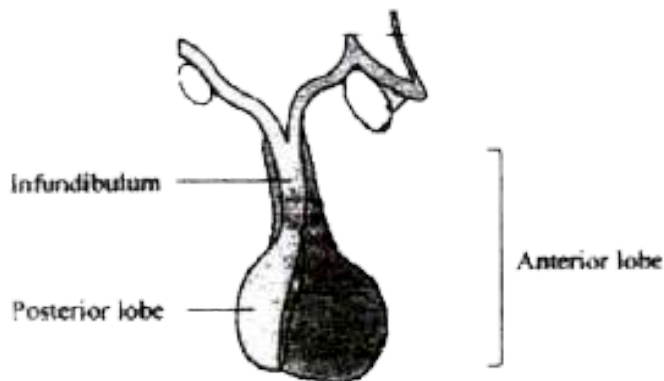
91. Match the items given in Column A with the most appropriate ones in Column B and rewrite the correct matching pairs .

Column A	Column B
(i) Cretinism	(a) Hypersecretion of adrenal cortex
(ii) Diabetes insipidus	(b) Hyposecretion of thyroxine
(iii) Exophthalmic goitre	(c) Hyposecretion of growth hormone
(iv) Adrenal virilism	(d) Hyposecretion of vasopressin
(v) Dwarfism	(e) Hyposecretion of adrenal cortex
	(f) Hypersecretion of growth hormone
	(g) Hypersecretion of thyroxine



Watch Video Solution

92. The diagram given below represents an endocrine gland in the human body. Study the diagram and answer the following questions :



(i) Identify the endocrine gland. Where is it located?

(ii) Why is the above gland referred to as the 'Master gland' ?

(iii) Name the hormone which in deficiency causes Diabetes Insipidus. How does this disorder differ from Diabetes Mellitus ?

(iv) Explain the term 'Hormone'.

What is the role of Tropic hormones in the human body?

(v) Which lobe of the above gland secretes:

1. Oxytocin
2. ACTH
3. Growth hormone.



Watch Video Solution