



BIOLOGY

BOOKS - EVERGREEN BIOLOGY (ENGLISH)

SAMPLE PAPER 2011

Section I

1. Define the following:

The mineral element essential for the clotting

of blood



Watch Video Solution

2. Name the cells of the testes that produce male hormones.



Watch Video Solution

3. Name the The internal layer of the eye which prevents reflection of light.



Watch Video Solution

4. The structural and functional units of kidney.



[Watch Video Solution](#)

5. Name the following :

That part of the chloroplast where the light reaction of photosynthesis takes place.



[Watch Video Solution](#)

6. Mention the exact location of the following structures : Yellow spot.



Watch Video Solution

7. State main functions of :

Coronary artery



Watch Video Solution

8. State two important functions of medulla oblongata and cerebrum.



Watch Video Solution

9. What is the main function of thrombocytes?



Watch Video Solution

10. Aqueous humour and Vitreous humour



Watch Video Solution

11. Copy and complete the following by filling in the blanks 1 to 5 with appropriate words/terms/ phrases:

To test the leaf for starch, the leaf is boiled in water.....(1) It is next boiled in methylated spirit to.....(2)The leaf is placed in warm water to soften it. It is then placed in a dish and (3) solution is added. The region, which contains starch, turns...(4)and the region, which does not contain starch, turns (5)



Watch Video Solution

12. Give the exact location of
Hydathodes.



Watch Video Solution

13. Give the exact location of organ of corti.



Watch Video Solution

14. State main functions of :

Give the exact location of Mitral valve.



Watch Video Solution

15. Give the exact location of the following :

Pituitary gland.



Watch Video Solution

16. Give the exact location of each of the following structures:

Amnion



Watch Video Solution

17. State whether the following statements are True or False. If False rewrite the correct form of the statement by changing the first or last word only:

Lysosomes is a part of the cell in which chromosomes are present



[Watch Video Solution](#)

18. State whether the following statement is True or False. If False rewrite the correct form of the statement by changing the first or last word only :

Urethra carries urine from kidney to the urinary bladder.



[Watch Video Solution](#)

19. Centromere is the organelle of the cell that initiates cell division.



Watch Video Solution

20. State whether true or false. If false, write correct statement:

Gestation is the process of fixing of the zygote to the uterine wall.



Watch Video Solution

21. State whether the following statements are True or False. If False rewrite the correct form of the statement by changing the first or last word only:

Penicillin obtained from *Pencillium notatum* is an antibody.



Watch Video Solution

22. Rewrite and complete the following sentences by inserting the correct word in the

space indicated :

.....vaccine is given to build up immunity against polio.



Watch Video Solution

23. Phenotype is the observable characteristic which is controlled.



Watch Video Solution

24. Fill in the blanks :

Wooden doors usually swell up during rainy season due to



Watch Video Solution

25. Fill in the blanks :

The blood vessel that begins and ends in capillaries is the....



Watch Video Solution

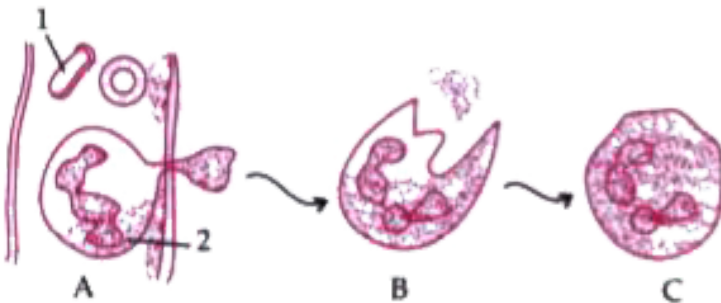
26. Fill in the blanks :

..... is the phenomenon of contraction of the cytoplasm from the cell wall.



Watch Video Solution

27. Study the following diagram carefully and then answer the questions that follow :

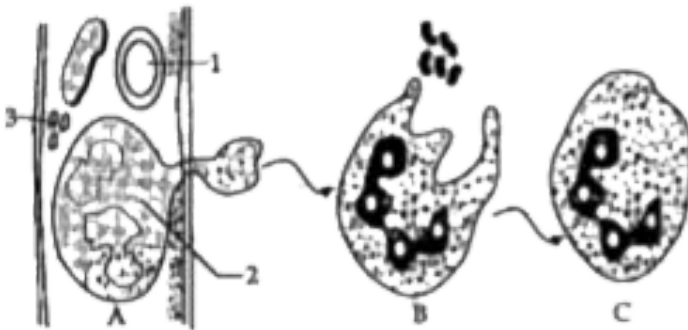


Name the cells labelled



Watch Video Solution

28. Study the diagrams given below and answer the questions that follow:

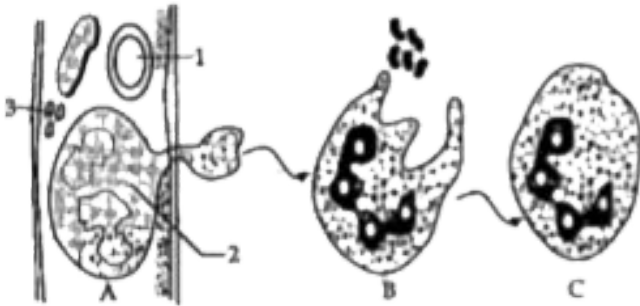


Identify the phenomenon occurring in A.
Explain the phenomenon.



Watch Video Solution

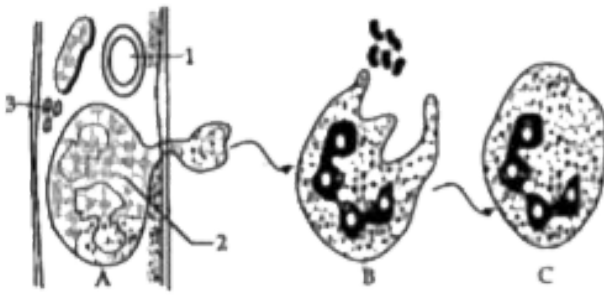
29. Study the diagrams given below and answer the questions that follow:



Mention two structural differences between 1 and 2

[Watch Video Solution](#)

30. Study the diagrams given below and answer the questions that follow:



Name the process occurring in B and C.



[Watch Video Solution](#)

31. Match the items in Column I with that which is most appropriate in Column II.

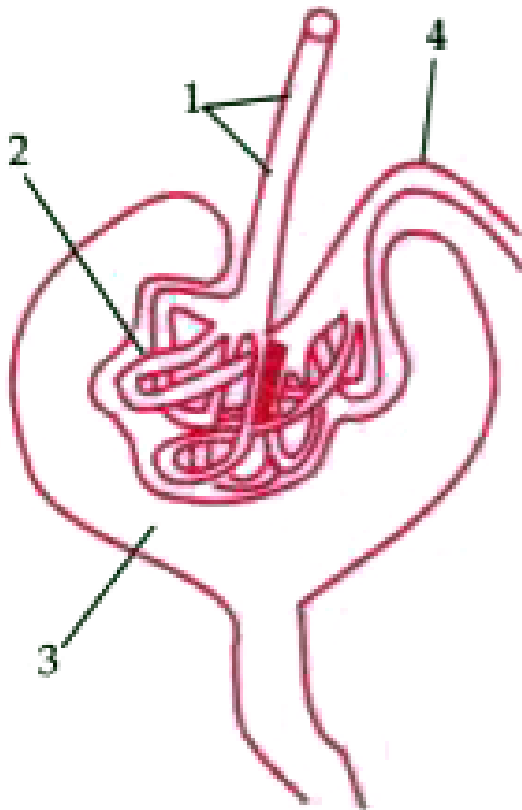
Column I	Column II
(1) Pacemaker	(a) Associated with static body balance
(2) Stroma	(b) Chordae tendinae
(3) Afferent nerve	(c) Site of light reaction
(4) Prolactin	(d) Motor neuron
(5) Saccules	(e) S A node
	(f) Stimulates production of milk by the mammary gland
	(g) Site of dark reaction

	(h) Transmits impulses from receptor organ to spinal cord
	(i) Secreted by anterior lobe of Pituitary gland
	(j) Transfers impulses from spinal cord to muscles.



Watch Video Solution

1. Study the diagram given below and then answer the questions that follow :

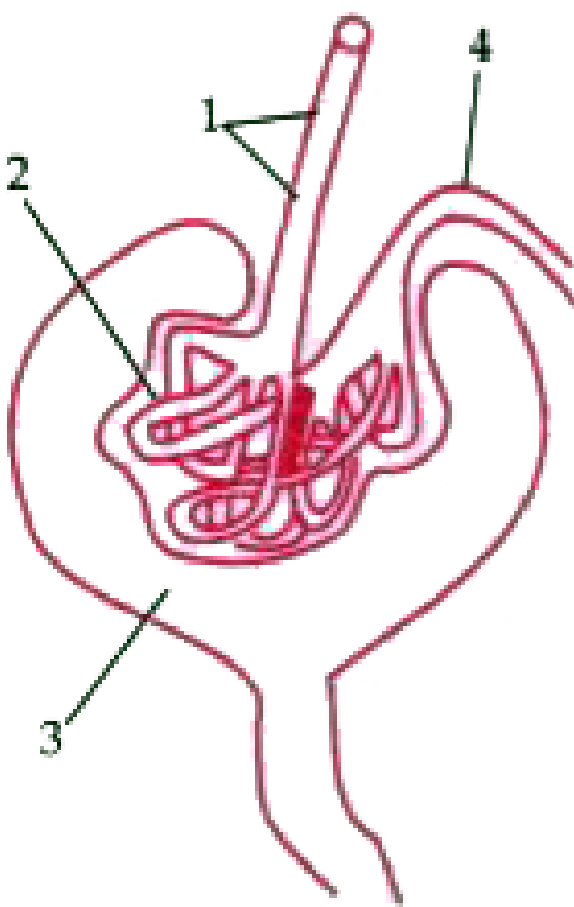


Name the region in the kidney where the above structure is present.



Watch Video Solution

2. Study the diagram given below and then answer the questions that follow :

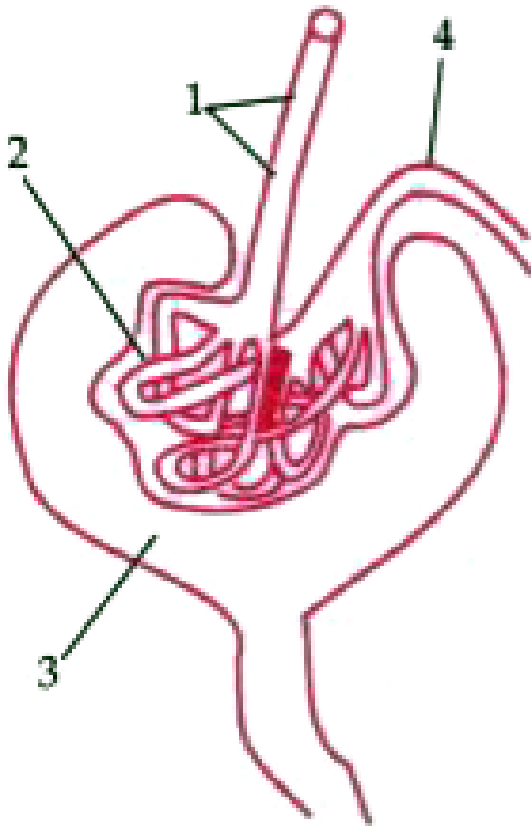


Name the parts labelled 1, 2, 3 and 4.



[Watch Video Solution](#)

3. Study the diagram given below and then answer the questions that follow :

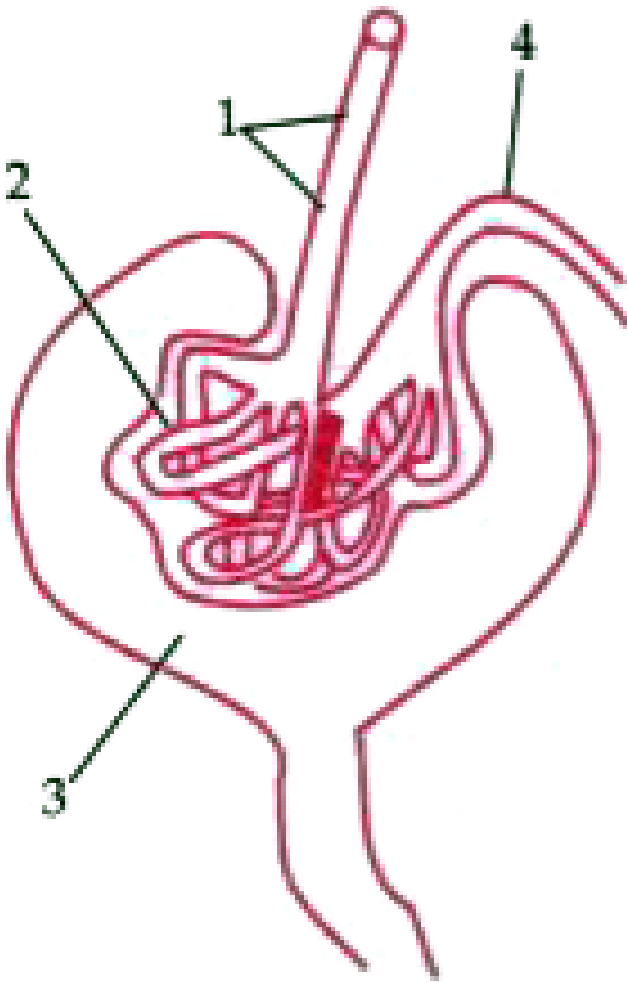


Name the stages involved in the formation of urine.



Watch Video Solution

4. Study the diagram given below and then answer the questions that follow :



What is the technical term given to the process occurring in 2 and 3 ? Briefly describe the process.



Watch Video Solution

5. Give reason for the following

Photosynthesis is considered as a process supporting all life on earth.



[Watch Video Solution](#)

6. Give scientific reasons for the following statements:

Loss of nucleus and mitochondria make erythrocytes more efficient in their function.



[Watch Video Solution](#)

7. Give reasons :

Potato cubes when placed in water become firm and increase in size.



[Watch Video Solution](#)

8. Comment upon the following:

The urine is slightly thicker in summer than in winter.





[Watch Video Solution](#)

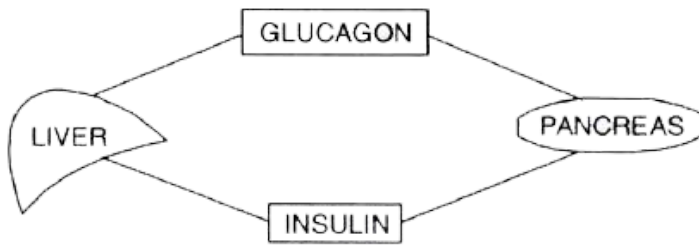
9. Comment upon the following :

People living in hilly regions usually suffer from simple goitre.



[Watch Video Solution](#)

10. Study the diagram given below and then answer the questions that follow:



(i) Name the cells of the pancreas that produce (a) glucagon (b) insulin.

(ii) State the main function of (a) glucagon (b) insulin.

(iii) Why is the pancreas referred to as an exo-endocrine gland ?

(iv) Why is insulin not given orally but is injected into the body ?

(v) What is the technical term for the cells of the pancreas that produce endocrine

hormones?

(vi) Where in the body is the pancreas located?

 [Watch Video Solution](#)

11. Study the diagram given below and then answer the questions that follow :



State the main function of (1) glucagon, (2) insulin.

 [Watch Video Solution](#)

12. Study the diagram given below and then answer the questions that follow :



Why is the pancreas referred to as an exoendocrine gland ?



[Watch Video Solution](#)

13. Study the diagram given below and then answer the questions that follow :



Why is insulin not given orally but is injected into the body ?



[Watch Video Solution](#)

14. Study the diagram given below and then answer the questions that follow :



What is the technical term for the cells of the pancreas that produce endocrine hormones ?

 [Watch Video Solution](#)

15. Study the diagram given below and then answer the questions that follow :



Where in the body is the pancreas located ?

[Watch Video Solution](#)

16. With reference to the functioning of the eye, answer the questions that follow :

What is meant by power of accommodation of the eye?

[Watch Video Solution](#)

17. With reference to the functioning of the eye, answer the questions that follow :

What is the shape of the lens during :

(a) near vision (b) distant vision ?



Watch Video Solution

18. With reference to the functioning of the eye, answer the questions that follow :

Name the two structures in the eye

responsible for bringing about the change in the shape of the lens.



[Watch Video Solution](#)

19. With reference to the functioning of the eye, answer the questions that follow :

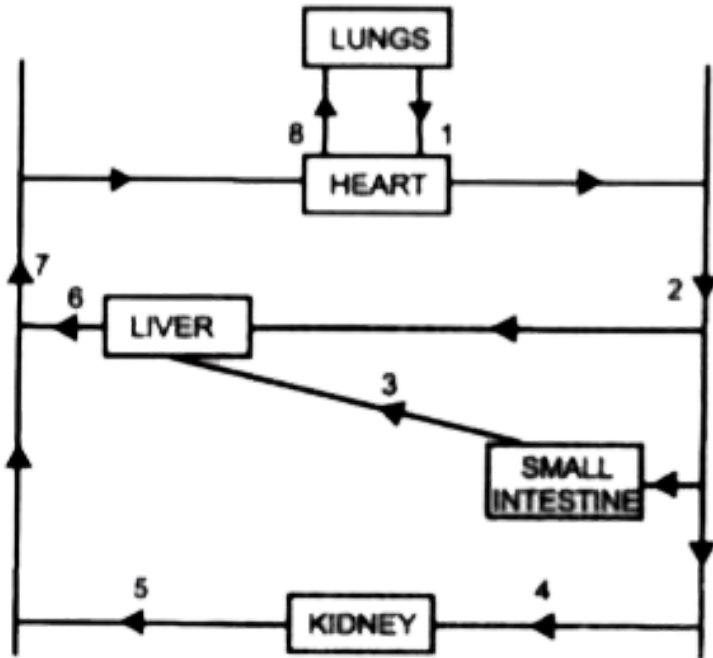
Name the cells of the retina and their respective pigments which get activated :

(a) in the dark (b) in light.



[Watch Video Solution](#)

20. Given below the simplified pathway of the circulatory system of man:

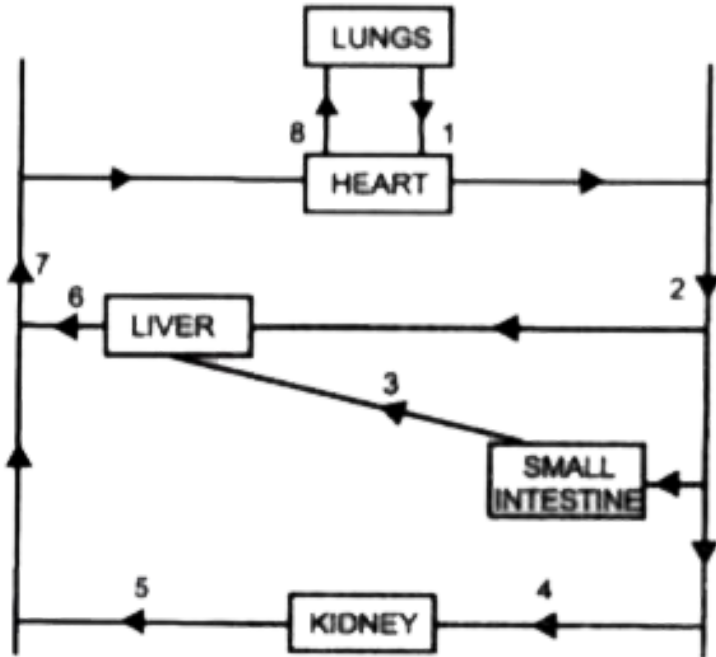


Name the blood vessels labelled 1. 3. 6. and 7.



[Watch Video Solution](#)

21. Given below the simplified pathway of the circulatory system of man:

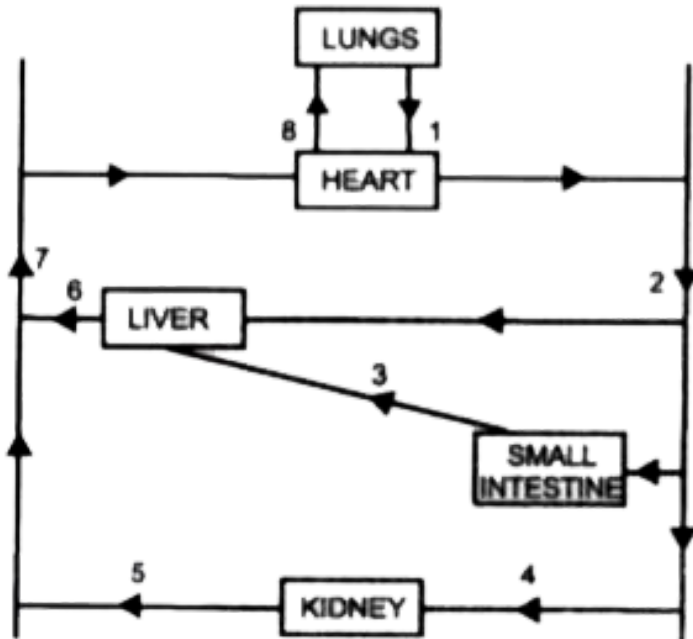


Name the blood vessel that supplies the walls of the heart with oxygen.



[Watch Video Solution](#)

22. Given below the simplified pathway of the circulatory system of man:

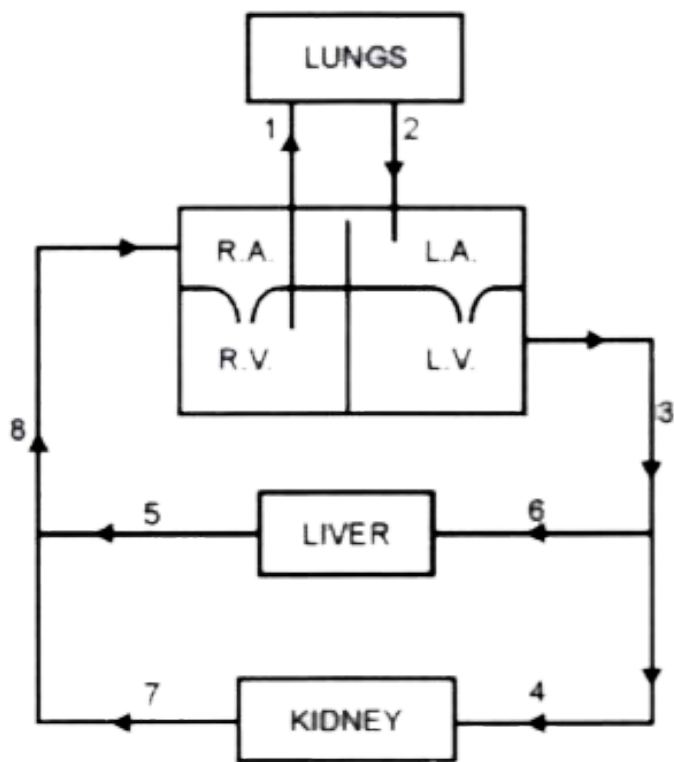


Draw a neat labelled diagram of the blood vessel numbered 2' as seen in a cross-section.



[Watch Video Solution](#)

23. Given below is a diagrammatic representation of a certain part of the process of circulation of blood in man. Study the same and then answer the questions that follow :



Mention two structural differences between blood vessels '3' and '8'



[Watch Video Solution](#)

24. With reference to the human ear, answer the questions that follow :

Give the technical term for the structure found in the inner ear.



[Watch Video Solution](#)

25. With reference to the human ear, answer the questions that follow :

Name the three small bones present in the middle ear. What is the biological term for them collectively?



Watch Video Solution

26. With reference to the human ear, answer the questions that follow :

Name the part of the ear associated with

(a) static balance (6) hearing (c) dynamic balance.



[Watch Video Solution](#)

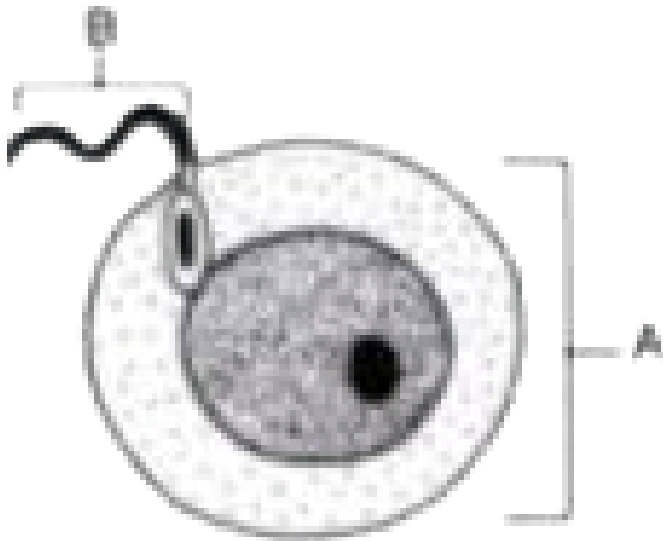
27. With reference to the human ear, answer the questions that follow :

Name the nerve, which transmits messages from the ear to the brain.



[Watch Video Solution](#)

28. The diagram given below represents two reproductive cells A and B. Study the same and then answer the questions that follow:



- (i) Identify the reproductive cells A and B.
- (ii) Name the specific part of the reproductive system where the above cells are produced

(iii) Where in the female reproductive system do these cells unite ?

(iv) Name the main hormones secreted by the
(1) ovary (2) testes.

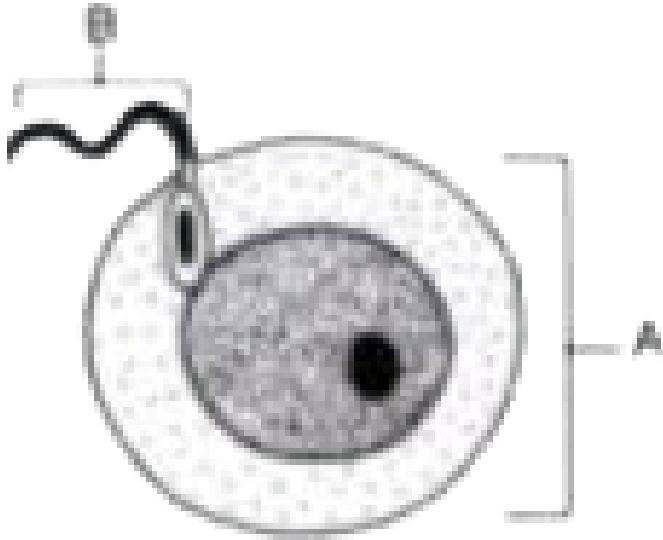
(v) Name an accessory gland found in the male reproductive system and state the function of its secretion.



Watch Video Solution

29. The diagram given below represents two reproductive cells A and B. Study the same and

then answer the questions that follow:



(i) Identify the reproductive cells A and B.

(ii) Name the specific part of the reproductive system where the above cells are produced

(iii) Where in the female reproductive system do these cells unite ?

(iv) Name the main hormones secreted by the

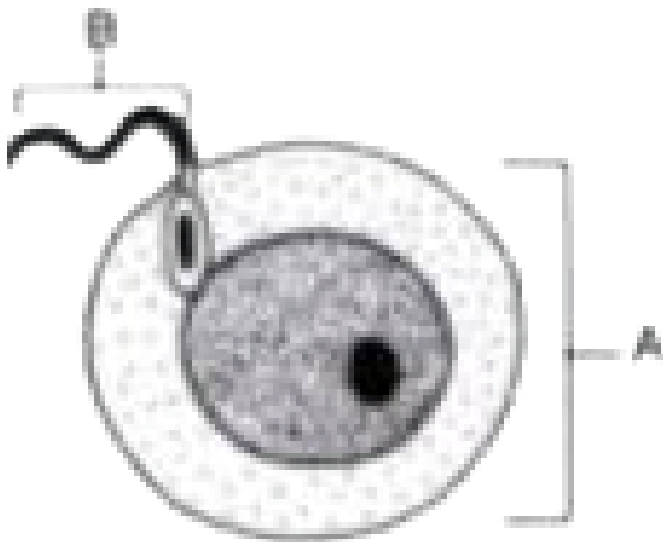
(1) ovary (2) testes.

(v) Name an accessory gland found in the male reproductive system and state the function of its secretion.



[Watch Video Solution](#)

30. The diagram given below represents two reproductive cells A and B. Study the same and then answer the questions that follow:



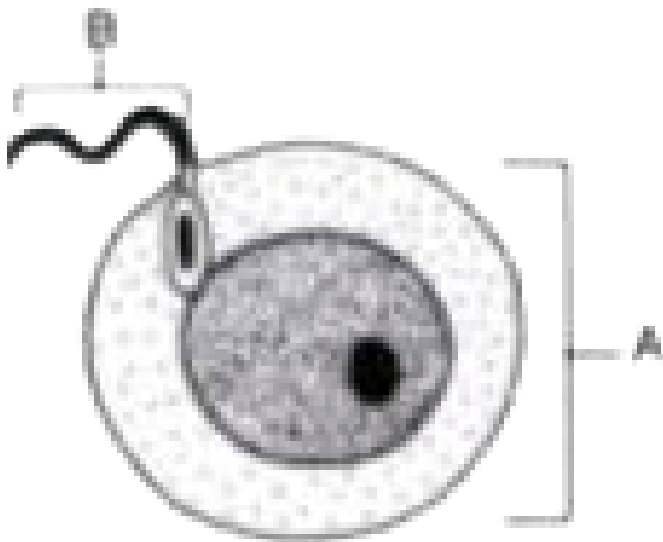
- (i) Identify the reproductive cells A and B.
- (ii) Name the specific part of the reproductive system where the above cells are produced
- (iii) Where in the female reproductive system do these cells unite ?
- (iv) Name the main hormones secreted by the
(1) ovary (2) testes.

(v) Name an accessory gland found in the male reproductive system and state the function of its secretion.



[Watch Video Solution](#)

31. The diagram given below represents two reproductive cells A and B. Study the same and then answer the questions that follow:



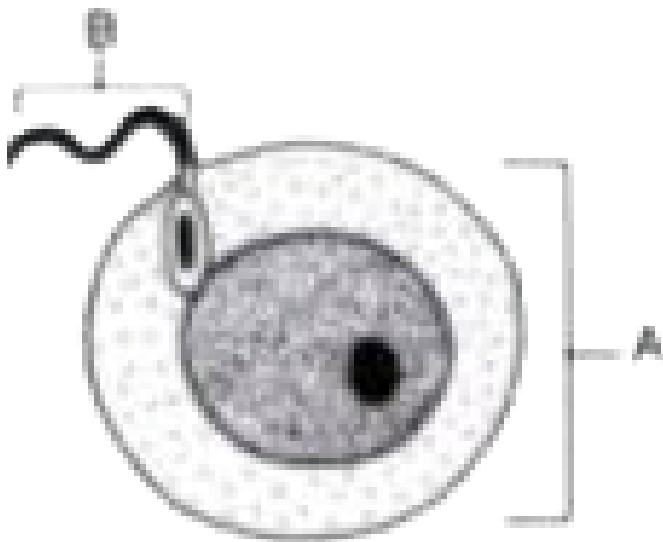
- (i) Identify the reproductive cells A and B.
- (ii) Name the specific part of the reproductive system where the above cells are produced
- (iii) Where in the female reproductive system do these cells unite ?
- (iv) Name the main hormones secreted by the
(1) ovary (2) testes.

(v) Name an accessory gland found in the male reproductive system and state the function of its secretion.



Watch Video Solution

32. The diagram given below represents two reproductive cells A and B. Study the same and then answer the questions that follow:



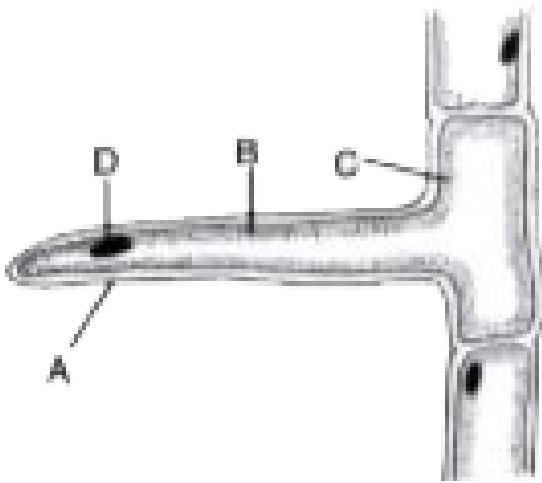
- (i) Identify the reproductive cells A and B.
- (ii) Name the specific part of the reproductive system where the above cells are produced
- (iii) Where in the female reproductive system do these cells unite ?
- (iv) Name the main hormones secreted by the
(1) ovary (2) testes.

(v) Name an accessory gland found in the male reproductive system and state the function of its secretion.



[Watch Video Solution](#)

33. The given diagram represents a layer of epidermal cells showing a fully-grown root hair. Study the diagram and answer the questions that follow :

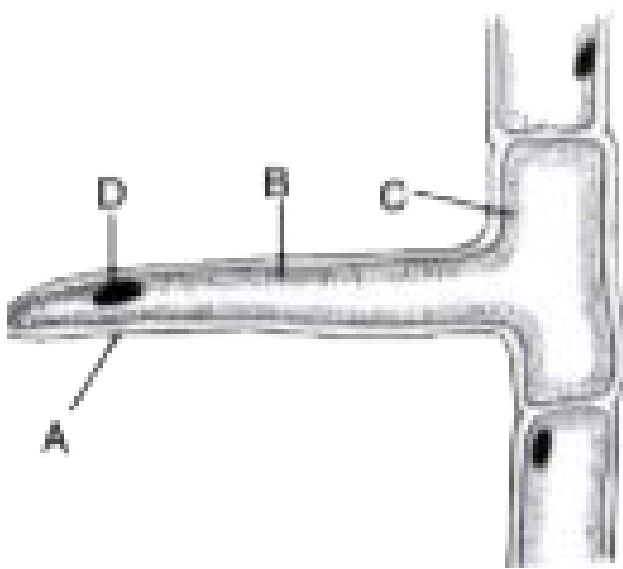


Name the parts labelled A, B, C and D.



[Watch Video Solution](#)

34. The given diagram represents a layer of epidermal cells showing a fully-grown root hair. Study the diagram and answer the questions that follow :



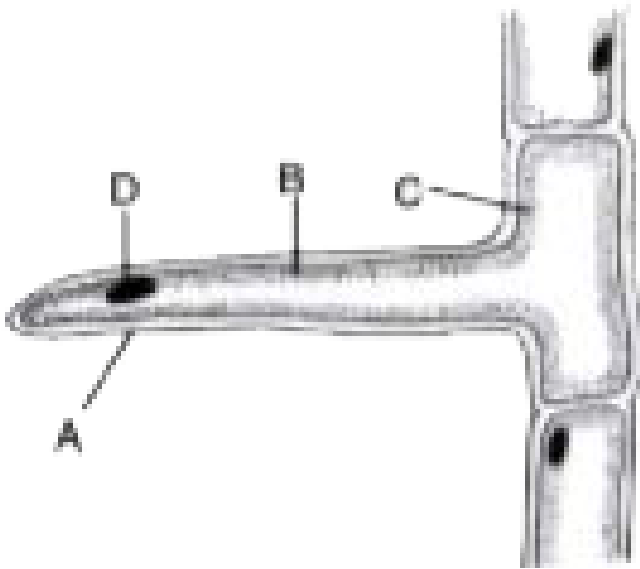
The root hair cell is in a turgid state. Name and explain the process that caused this state

.



Watch Video Solution

35. The given diagram represents a layer of epidermal cells showing a fully-grown root hair. Study the diagram and answer the questions that follow :

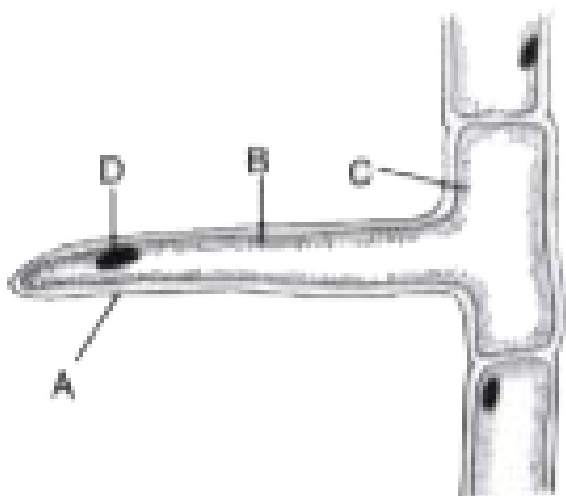


Mention one distinct difference between the parts labelled A and B.



Watch Video Solution

36. The given diagram represents a layer of epidermal cells showing a fully-grown root hair. Study the diagram and answer the questions that follow :



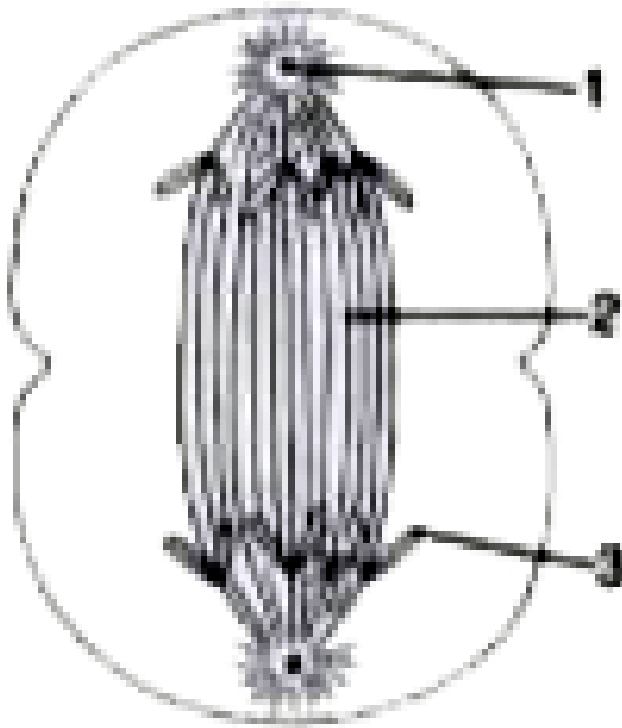
Draw a diagram of the above root hair cell as

it would appear when a concentrated solution of fertilizers is added near it.



Watch Video Solution

37. The diagram given below represents a stage during cell division. Study the same and then answer the questions that follow :

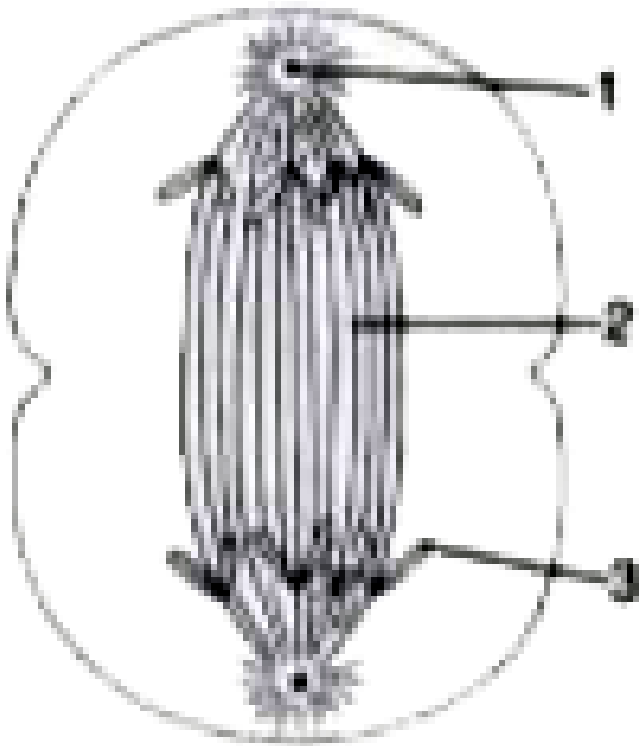


Name the parts labelled 1, 2 and 3.



Watch Video Solution

38. The diagram given below represents a stage during cell division. Study the same and then answer the questions that follow :

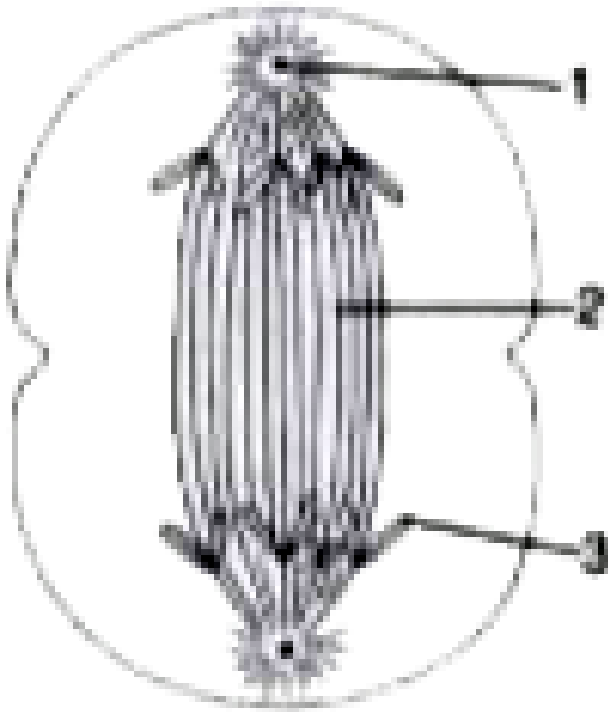


Identify the above stage and give a reason to support your answer.



Watch Video Solution

39. The diagram given below represents a stage during cell division. Study the same and then answer the questions that follow :

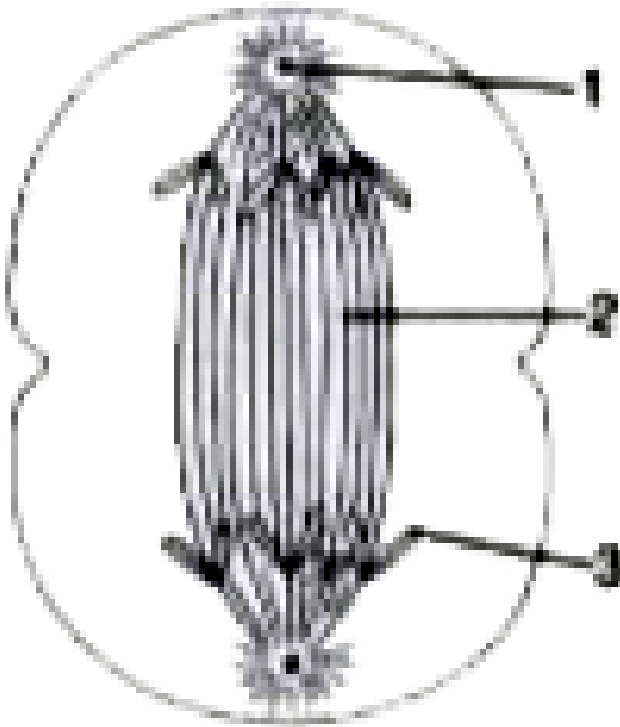


Mention where in the body this type of cell division occurs.



Watch Video Solution

40. The diagram given below represents a stage during cell division. Study the same and then answer the questions that follow :

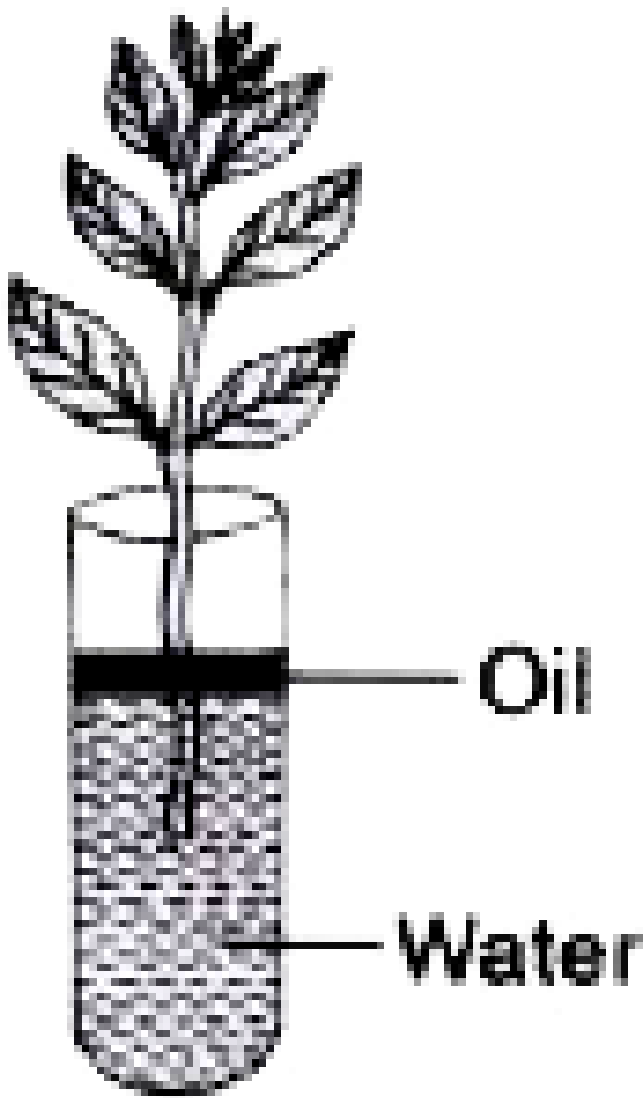


Name the parts labelled 1, 2 and 3.



[Watch Video Solution](#)

41. Study the diagram given below and answer the questions that follow :



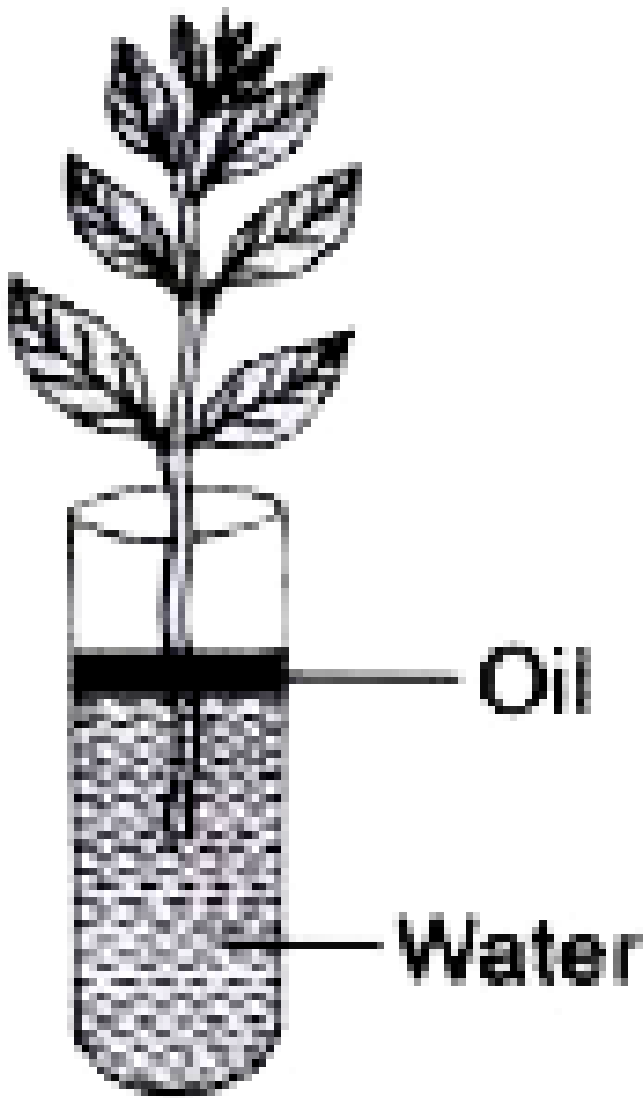
Name the process being studied in the experiment.





[Watch Video Solution](#)

42. Study the diagram given below and answer the questions that follow :



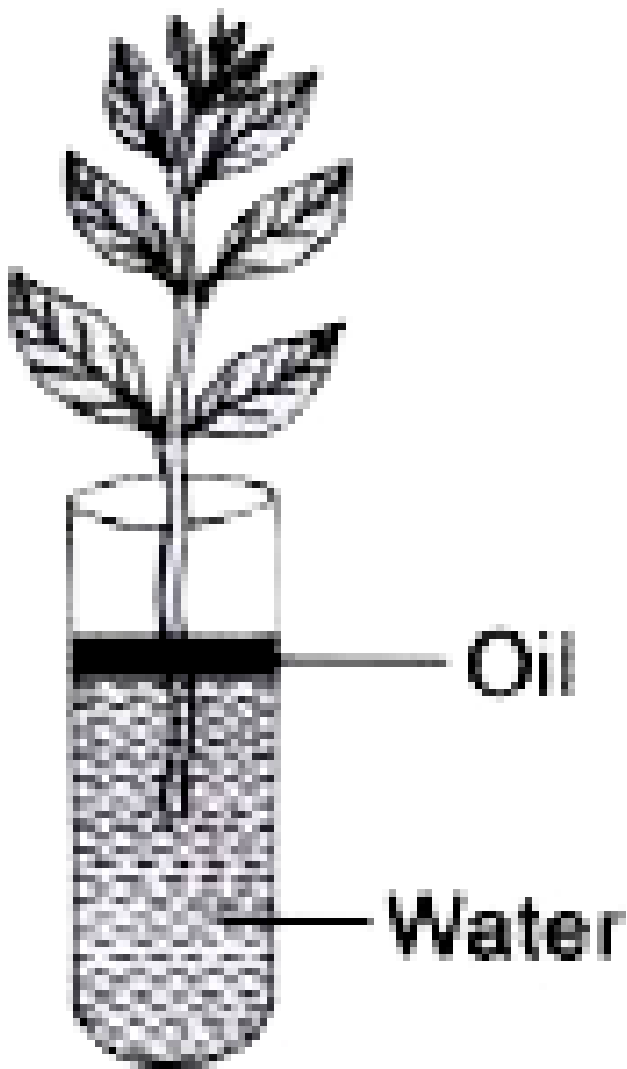
Name the process being studied in the experiment.





[Watch Video Solution](#)

43. Study the diagram given below and answer the questions that follow :

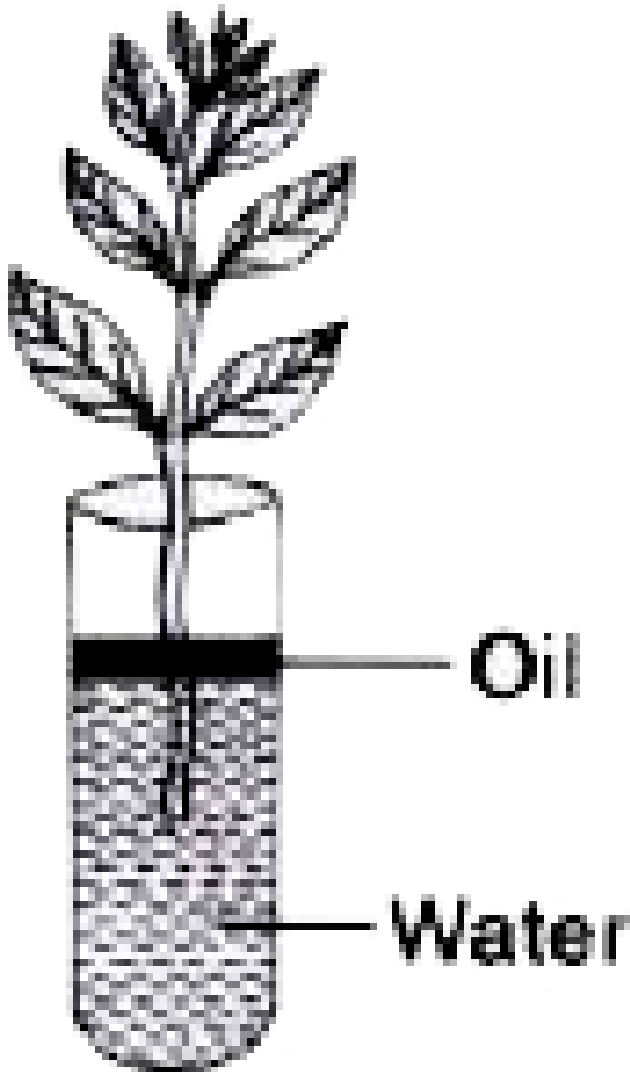


Why is oil placed over water



Watch Video Solution

44. Study the diagram given below and answer the questions that follow :

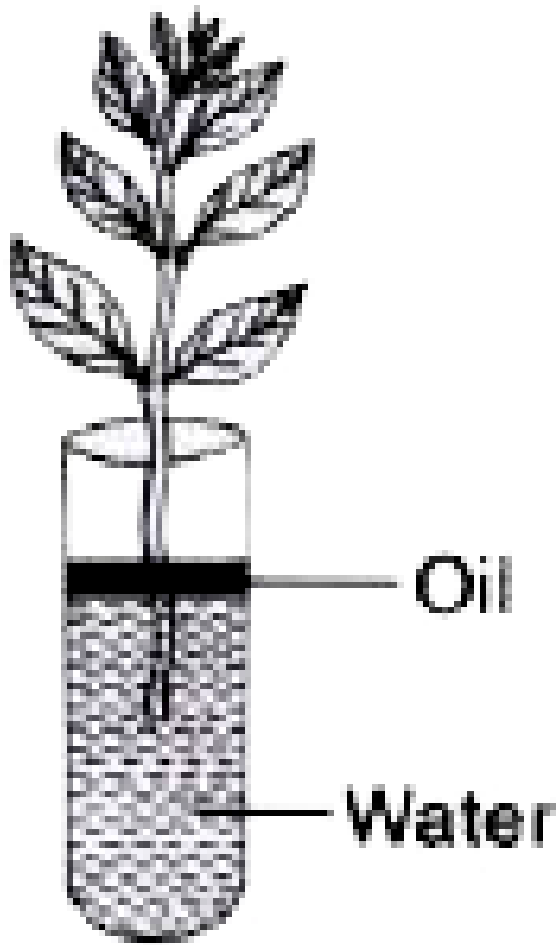


What do we observe with regard to the level of water when this set-up is placed in (1) bright sunlight (2) humid conditions (3) windy day



[Watch Video Solution](#)

45. Study the diagram given below and answer the questions that follow :



Mention any three adaptations found in plants to overcome the process studied in the experiment..



Watch Video Solution

46. Given below is a table comparing the effects of sympathetic and parasympathetic nervous system for four feature (1-4). Which one feature is correctly described ?

S. Feature No.	Sympathetic nervous system	Parasympathetic nervous system
(1) Salivary glands	Stimulates secretion	Inhibits secretion
(2) Pupil of the eye	Dilates	Constricts
(3) Heart rate	Decreases	Increases
(4) Intestinal peristalsis	Stimulates	Inhibits



Watch Video Solution

47. List four major activities of the Red Cross.



Watch Video Solution

48. Define antiseptics and disinfectants. How do these differ? Give one example of a substance which acts both as an antiseptic and disinfectant.



Watch Video Solution

49. Write down the difference between the following pairs as indicated within the brackets :

Erythrocytes and leucocytes (function).



Watch Video Solution

50. Write down the difference between the following pairs as indicated within the brackets :

Guttation and bleeding in plants (cause)



 [Watch Video Solution](#)

51. Expand the abbreviation :

NADP



[Watch Video Solution](#)

52. Differentiate as directed :

Monohybrid and Dihybrid cross (Phenotypic ratio)



[Watch Video Solution](#)

