



BIOLOGY

BOOKS - EVERGREEN BIOLOGY (ENGLISH)

SAMPLE PAPER 2018

Section I

1. Differentiate between the following pairs on the basis of what is mentioned in brackets:

The organization which procures and supplies blood during an emergency



Watch Video Solution

2. Name the following:

The blood vessel which supplies blood to the liver



Watch Video Solution

3. The number of chromosomes present in a nerve cell of a human being.



Watch Video Solution

4. Name the The layer of the eyeball that forms the transparent cornea.



Watch Video Solution

5. Name the following:

The wax-like layer on the epidermis of leaves which reduces transpiration.



Watch Video Solution

6. Copy and complete the following by filling in the blanks 1 to 5 with appropriate words/terms/ phrases:

To test the leaf for starch, the leaf is boiled in water.....(1) It is next boiled in methylated

spirit to.....(2)The leaf is placed in warm water to soften it. It is then placed in a dish and
(3) solution is added. The region, which contains starch, turns...(4)and the region, which does not contain starch, turns (5)



[Watch Video Solution](#)

7. Match the items given in Column A with the most appropriate ones in Column B and

rewrite the correct matching pairs .

Column A	Column B
(i) Cretinism	(a) Hypersecretion of adrenal cortex
(ii) Diabetes insipidus	(b) Hyposecretion of thyroxine
(iii) Exophthalmic goitre	(c) Hyposecretion of growth hormone
(iv) Adrenal virilism	(d) Hyposecretion of vasopressin
(v) Dwarfism	(e) Hyposecretion of adrenal cortex
	(f) Hypersecretion of growth hormone
	(g) Hypersecretion of thyroxine



[Watch Video Solution](#)

8. The statement given below is incorrect.

Rewrite the correct statement by changing the underlined words of the statement.

Normal pale yellow colour of the urine is due to the presence of the pigment Melanin.



[Watch Video Solution](#)

9. The statement given below is incorrect.

Rewrite the correct statement by changing the underlined words of the statement

The outermost layer of Meninges is Pia mater.



Watch Video Solution

10. The statement given below is incorrect.

Rewrite the correct statement by changing the

underlined words of the statement.

The cell sap of root hair is Hypotonic.



[Watch Video Solution](#)

11. The statement given below is incorrect.

Rewrite the correct statement by changing the

underlined words of the statement

Xylem transports starch from the leaves to all

parts of the plant body



[Watch Video Solution](#)

12. Nitrogen bonds are present between the complementary nitrogenous bases of DNA.



Watch Video Solution

13. Choose between the two options to answer the question specified in the brackets for the following:

An example is illustrated below :

Example : Corolla or Calyx (Which is the outer whorl ?) Answer : Calyx

(i) Blood in the renal artery or renal vein

(Which one has more urea ?)

(ii) Perilymph or endolymph (Which one surrounds the organ of Corti ?)

(iii) Lenticels or stomata (Which one remains open always?)

(iv) Sclerotic layer or choroid layer (Which one forms the Iris?)

(v) Blood in the pulmonary artery or pulmonary vein (Which one contains less oxyhaemoglobin?)



Watch Video Solution

14. Choose between the two options to answer the question specified in the brackets for the following:

An example is illustrated below :

Example : Corolla or Calyx (Which is the outer whorl ?) Answer : Calyx

(i) Blood in the renal artery or renal vein (Which one has more urea ?)

(ii) Perilymph or endolymph (Which one surrounds the organ of Corti ?)

(iii) Lenticels or stomata (Which one remains open always?)

(iv) Sclerotic layer or choroid layer (Which one

forms the Iris?)

(v) Blood in the pulmonary artery or pulmonary vein (Which one contains less oxyhaemoglobin?)



[Watch Video Solution](#)

15. Choose between the two options to answer the question specified in the brackets for the following:

An example is illustrated below :

Example : Corolla or Calyx (Which is the outer

whorl ?) Answer : Calyx

(i) Blood in the renal artery or renal vein

(Which one has more urea ?)

(ii) Perilymph or endolymph (Which one

surrounds the organ of Corti ?)

(iii) Lenticels or stomata (Which one remains

open always?)

(iv) Sclerotic layer or choroid layer (Which one

forms the Iris?)

(v) Blood in the pulmonary artery or

pulmonary vein (Which one contains less

oxyhaemoglobin?)



Watch Video Solution

16. Choose between the two options to answer the question specified in the brackets for the following:

An example is illustrated below :

Example : Corolla or Calyx (Which is the outer whorl ?) Answer : Calyx

(i) Blood in the renal artery or renal vein (Which one has more urea ?)

(ii) Perilymph or endolymph (Which one surrounds the organ of Corti ?)

(iii) Lenticels or stomata (Which one remains

open always?)

(iv) Sclerotic layer or choroid layer (Which one forms the Iris?)

(v) Blood in the pulmonary artery or pulmonary vein (Which one contains less oxyhaemoglobin?)



[Watch Video Solution](#)

17. Choose between the two options to answer the question specified in the brackets for the following:

An example is illustrated below :

Example : Corolla or Calyx (Which is the outer whorl ?) Answer : Calyx

(i) Blood in the renal artery or renal vein (Which one has more urea ?)

(ii) Perilymph or endolymph (Which one surrounds the organ of Corti ?)

(iii) Lenticels or stomata (Which one remains open always?)

(iv) Sclerotic layer or choroid layer (Which one forms the Iris?)

(v) Blood in the pulmonary artery or

pulmonary vein (Which one contains less oxyhaemoglobin?)



[Watch Video Solution](#)

18. Given below is a representation of a kind of pollution. Study the same and answer the questions that follow :



(i) Name the kind of pollution.

(ii) List any three common sources of this pollution

(iii) Mention three harmful effects of this pollution on human health.

(iv) Explain the term 'Pollutant'.

(v) Name two soil pollutants.



Watch Video Solution

19. Given below is a representation of a kind of pollution. Study the same and answer the questions that follow :



(i) Name the kind of pollution.

(ii) List any three common sources of this pollution

(iii) Mention three harmful effects of this pollution on human health.

(iv) Explain the term 'Pollutant'.

(v) Name two soil pollutants.



[Watch Video Solution](#)

20. Given below is a representation of a type of pollution. Study the picture and answer the question :



How does this pollution affect human health ?

 [Watch Video Solution](#)

21. Given below is a representation of a type of pollution. Study the picture and answer the

question :



Write one measure to reduce this pollution.



Watch Video Solution

22. Given below is a representation of a type of pollution. Study the picture and answer the question :



State one gaseous compound that leads to the depletion of the ozone layer and creates 'Ozone holes'.



[Watch Video Solution](#)

23. Find the odd term out.

Detergents, X-rays, sewage, oil spills.



[Watch Video Solution](#)

24. Choose the ODD one out from the following terms given and name the CATEGORY to which the others belong:

Example : Nose, Tongue, Arm, Eye. Answer :

Odd Term - Arm, Category - Sense organs

Lumen, muscular tissue, connective tissue, pericardium.



[Watch Video Solution](#)

25. Choose the odd one out of the following set of terms given and name the category to which the others belong:

(i) Phosphate, RNA, Sugar, Nitrogenous base.

(ii) Urethra, uterus, urinary bladder, ureter.

(iii) Cyton, Photon, Axon, Dendron.

(iv) Haemoglobin, glucagon, iodopsin, rhodopsin.

(v) Dendrites, Medullary Sheath, Axon, Spinal cord.



[Watch Video Solution](#)

26. Choose the ODD one out from the following terms given and name the CATEGORY to which the others belong:

Example : Nose, Tongue, Arm, Eye. Answer :

Odd Term - Arm, Category - Sense organs

Centrosome, Cell wall, Cell membrane, Large vacuoles.



Watch Video Solution

27. Find the odd one out and name the category :

Prostate gland, Cowper's gland, seminal vesicle, seminiferous tubules.



Watch Video Solution

Section I Choose The Correct Answer

1. Choose the correct answer to the given statement from the four choices given below the statement:

The number of Spinal nerves in a human being are :

A. 31 pairs

B. 10 pairs

C. 21 pairs

D. 30 pairs

Answer: A



Watch Video Solution

2. Name the following:

A non-biodegradable pesticide.

A. DDT

B. Vegetable peel

C. Cardboard

D. Bark of trees

Answer: A



Watch Video Solution

3. Aqueous humour is present between the :

- A. Lens and Retina
- B. Iris and Lens
- C. Cornea and Iris
- D. Cornea and Lens

Answer: D



Watch Video Solution

4. A strong chemical substance which is used on objects and surfaces in our surroundings to kill germs:

A. Cresol

B. Carbolic acid

C. Iodine

D. Mercurochrome

Answer:



Watch Video Solution

5. Choose the correct option from the four given below:

Which one of the following is a Greenhouse gas ?

A. Oxygen

B. Methane

C. Sulphur dioxide

D. Nitrogen

Answer: b

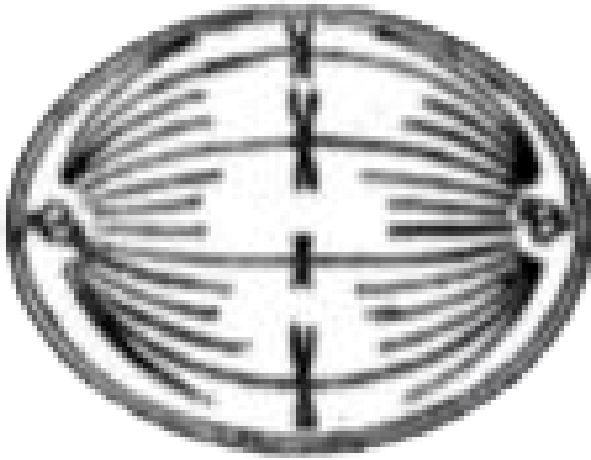


Watch Video Solution

Section II

1. The diagram given below represents a stage during cell division

Study the same and answer the questions that follow :



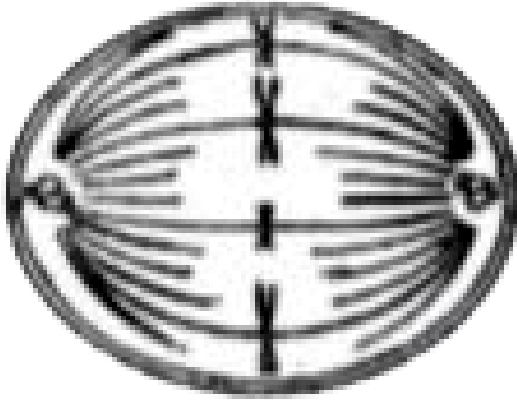
Identify whether it is a plant cell or an animal cell! Give a reason in support of your answer.



Watch Video Solution

2. The diagram given below represents a stage during cell division

Study the same and answer the questions that follow :



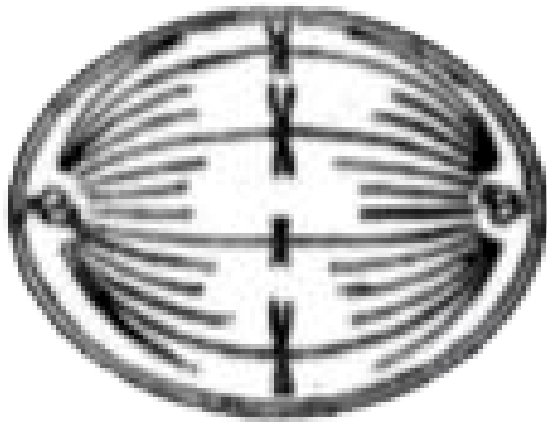
Name the stage depicted in the diagram. What is the unique feature observed in this stage?



Watch Video Solution

3. The diagram given below represents a stage during cell division

Study the same and answer the questions that follow :



Name the type of cell division that occurs during:

Replacement of old leaves by new ones.

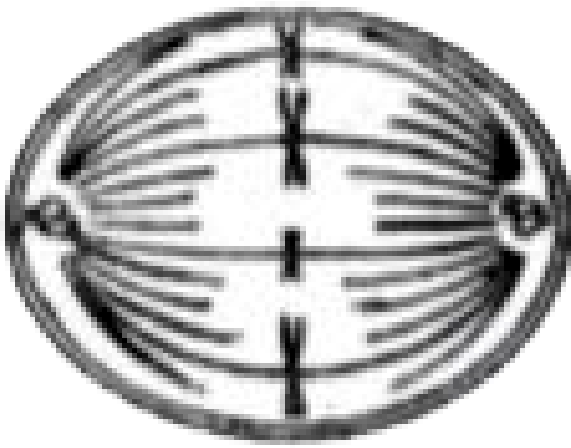
Formation of gametes



[Watch Video Solution](#)

4. The diagram given below represents a stage during cell division

Study the same and answer the questions that follow :



What is the stage that comes before the stage shown in the diagram ?

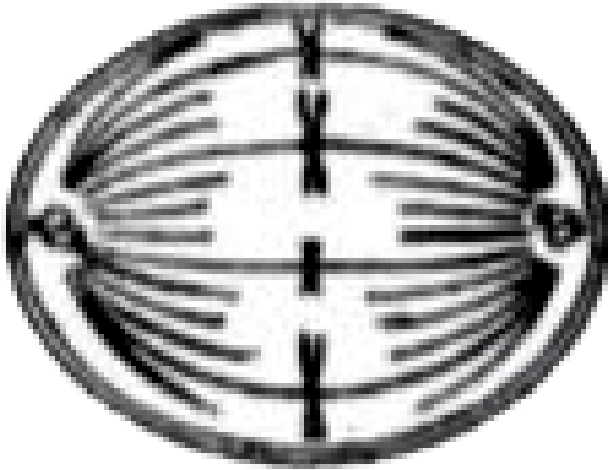


[Watch Video Solution](#)

5. The diagram given below represents a stage during cell division

Study the same and answer the questions that

follow :



Draw a neat, labelled diagram of the stage mentioned in.



Watch Video Solution

6. Give the exact location and one function of the following:

Epididymis



[Watch Video Solution](#)

7. (b) Mention the exact location of the following:

(i) Proximal convoluted tubule.

(ii) Lacrimal gland

(iii) Malleus

(iv) Hydathodes

(v) Semilunar valve



Watch Video Solution

8. (b) Mention the exact location of the following:

(i) Proximal convoluted tubule.

(ii) Lacrimal gland

(iii) Malleus

(iv) Hydathodes

(v) Semilunar valve



[Watch Video Solution](#)

9. Give the exact location of
Hydathodes.



[Watch Video Solution](#)

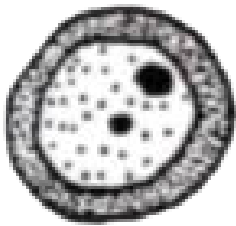
10. State the exact location of the following
Pulmonary semilunar valve



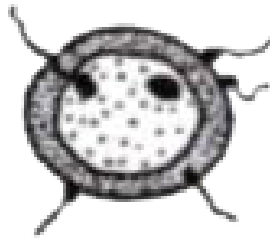
[Watch Video Solution](#)

11. Given below are diagrams showing the different stages in the process of fertilisation of an egg in the human female reproductive tract.

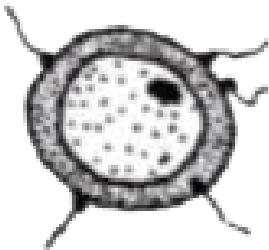
Study the diagrams and answer the questions



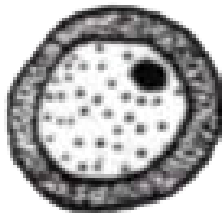
A



B



C



D

(i) Arrange the letters given below each

diagram in a logical sequence to show the correct order in the process of fertilisation.

(ii) Where does fertilisation normally take place? What is 'Implantation' that follows fertilisation ?

(iii) Mention the chromosome number of the egg and zygote in humans.

(iv) Explain the term 'Gestation'. How long does Gestation last in humans ?

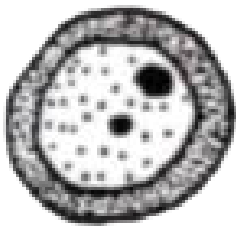
(v) Draw a neat, labelled diagram of a mature human sperm.



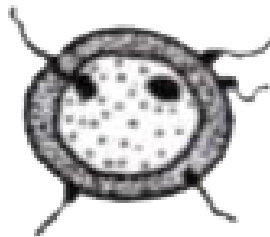
[Watch Video Solution](#)

12. Given below are diagrams showing the different stages in the process of fertilisation of an egg in the human female reproductive tract.

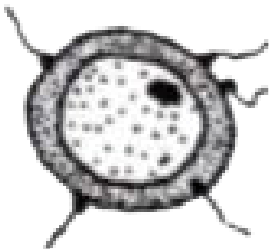
Study the diagrams and answer the questions



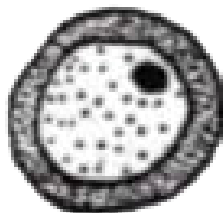
A



B



C



D

(i) Arrange the letters given below each

diagram in a logical sequence to show the correct order in the process of fertilisation.

(ii) Where does fertilisation normally take place? What is 'Implantation' that follows fertilisation ?

(iii) Mention the chromosome number of the egg and zygote in humans.

(iv) Explain the term 'Gestation'. How long does Gestation last in humans ?

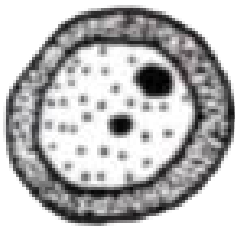
(v) Draw a neat, labelled diagram of a mature human sperm.



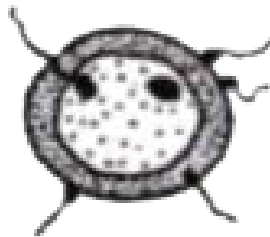
Watch Video Solution

13. Given below are diagrams showing the different stages in the process of fertilisation of an egg in the human female reproductive tract.

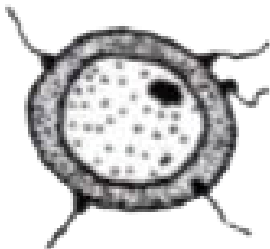
Study the diagrams and answer the questions



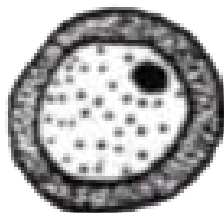
A



B



C



D

(i) Arrange the letters given below each

diagram in a logical sequence to show the correct order in the process of fertilisation.

(ii) Where does fertilisation normally take place? What is 'Implantation' that follows fertilisation ?

(iii) Mention the chromosome number of the egg and zygote in humans.

(iv) Explain the term 'Gestation'. How long does Gestation last in humans ?

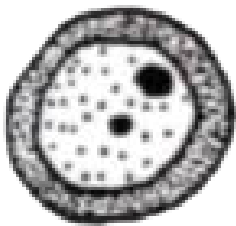
(v) Draw a neat, labelled diagram of a mature human sperm.



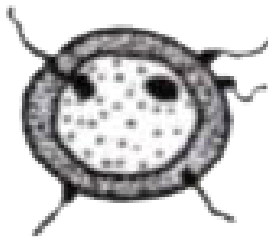
[Watch Video Solution](#)

14. Given below are diagrams showing the different stages in the process of fertilisation of an egg in the human female reproductive tract.

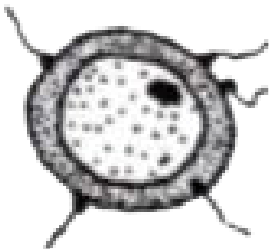
Study the diagrams and answer the questions



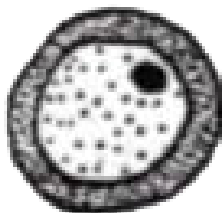
A



B



C



D

(i) Arrange the letters given below each

diagram in a logical sequence to show the correct order in the process of fertilisation.

(ii) Where does fertilisation normally take place? What is 'Implantation' that follows fertilisation ?

(iii) Mention the chromosome number of the egg and zygote in humans.

(iv) Explain the term 'Gestation'. How long does Gestation last in humans ?

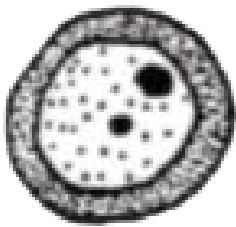
(v) Draw a neat, labelled diagram of a mature human sperm.



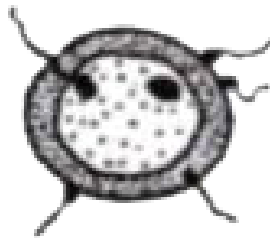
[Watch Video Solution](#)

15. Given below are diagrams showing the different stages in the process of fertilisation of an egg in the human female reproductive tract.

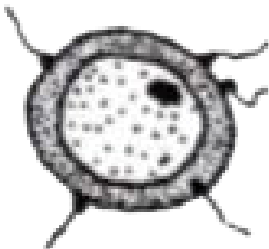
Study the diagrams and answer the questions



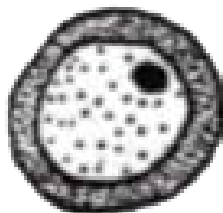
A



B



C



D

(i) Arrange the letters given below each

diagram in a logical sequence to show the correct order in the process of fertilisation.

(ii) Where does fertilisation normally take place? What is 'Implantation' that follows fertilisation ?

(iii) Mention the chromosome number of the egg and zygote in humans.

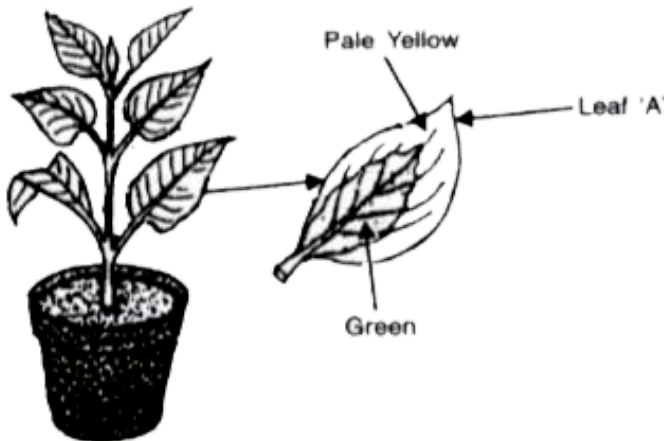
(iv) Explain the term 'Gestation'. How long does Gestation last in humans ?

(v) Draw a neat, labelled diagram of a mature human sperm.



[Watch Video Solution](#)

16. A potted plant with variegated leaves was taken in order to prove a factor necessary for photosynthesis. The potted plant was kept in the dark for 24 hours and then placed in bright sunlight for a few hours. Observe the diagrams and answer the questions.

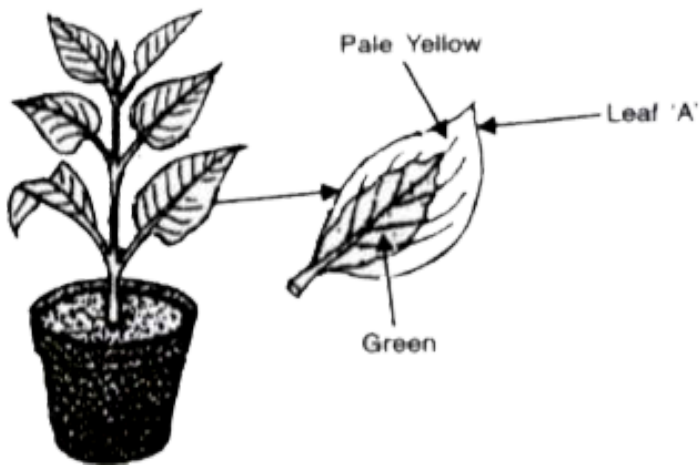


What aspect of photosynthesis is being tested in the above diagram?



Watch Video Solution

17. A potted plant with variegated leaves was taken in order to prove a factor necessary for photosynthesis. The potted plant was kept in the dark for 24 hours and then placed in bright sunlight for a few hours. Observe the diagrams and answer the questions.



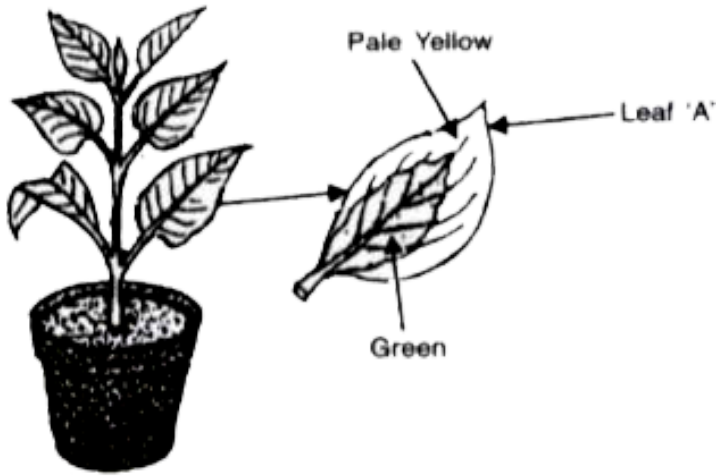
Represent the process of photosynthesis in the form of a balanced equation



Watch Video Solution

18. A potted plant with variegated leaves was taken in order to prove a factor necessary for photosynthesis. The potted plant was kept in

the dark for 24 hours and then placed in bright sunlight for a few hours. Observe the diagrams and answer the questions.

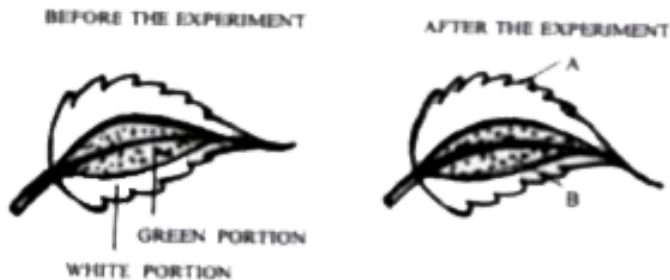


Why was the plant kept in the dark before beginning the experiment?



[Watch Video Solution](#)

19. The diagram given below is an experiment conducted to study a factor necessary for photosynthesis. Observe the diagram and then answer the following questions.

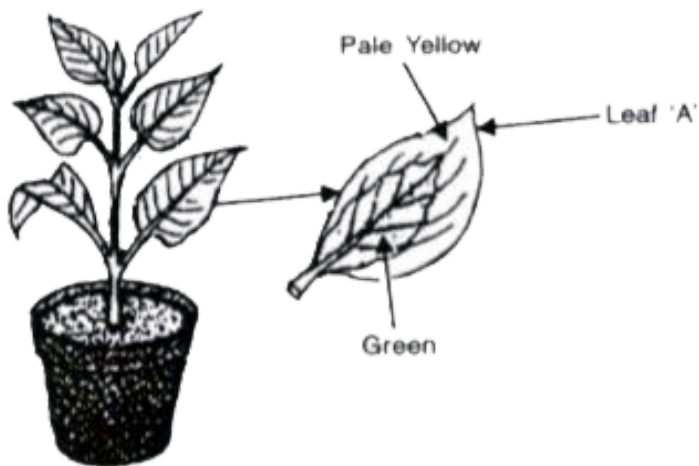


Name the test performed on the leaf and the solution used for the test.



[Watch Video Solution](#)

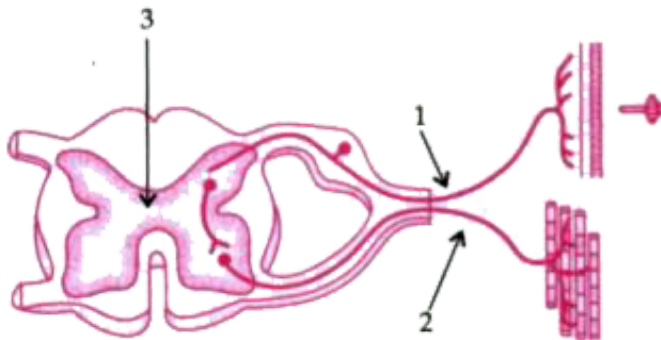
20. A potted plant with variegated leaves was taken in order to prove a factor necessary for photosynthesis. The potted plant was kept in the dark for 24 hours and then placed in bright sunlight for a few hours. Observe the diagrams and answer the questions.



Draw a neat labelled diagram of a chloroplast

 [Watch Video Solution](#)

21. The diagram given below shows the internal structure of a spinal cord depicting a phenomenon. Study the diagram and answer the questions:

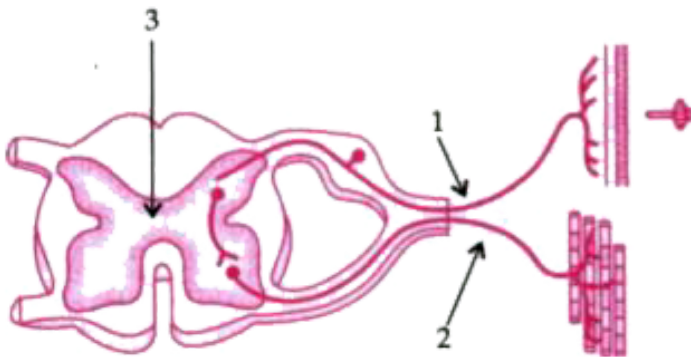


Name the phenomenon that is depicted in the diagram. Define the phenomenon.



[Watch Video Solution](#)

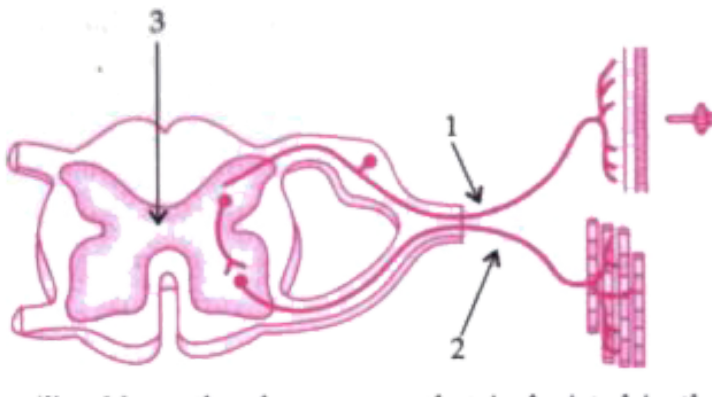
22. The diagram given below shows the internal structure of a spinal cord depicting a phenomenon. Study the diagram and answer the questions:



Give the technical term for the point of contact between the two nerve cells.

 [Watch Video Solution](#)

23. The diagram given below shows the internal structure of a spinal cord depicting a phenomenon. Study the diagram and answer the questions:



Name the phenomenon that is depicted in the diagram. Define the phenomenon.

 [Watch Video Solution](#)

24. How does the arrangement of neurons in the spinal cord differ from that of the brain?



Watch Video Solution

25. Mention two ways by which the spinal cord is protected in our body.



Watch Video Solution

26. Give appropriate biological or technical terms for the following:

Process of maintaining water and salt balance in the blood.



Watch Video Solution

27. Give technical/biological term for the following:

(ii) Hormones which regulate the secretion of other endocrine glands.





[Watch Video Solution](#)

28. Give appropriate biological / technical terms for the following:

The ripened ovule.



[Watch Video Solution](#)

29. Give biological/ technical terms for the following:

The condition in which a pair of chromosomes carry similar alleles of a particular character.



[Watch Video Solution](#)

30. Give appropriate biological or technical terms for the following:

The complex consisting of a DNA strand and a core of histones.



[Watch Video Solution](#)

31. Give the biological/technical terms for the following:

The onset of menstruation in a young girl.



Watch Video Solution

32. Give biological technical terms for the following

Squeezing out of white blood cells from the capillaries into the surrounding tissues,



Watch Video Solution

33. Give appropriate biological or technical terms for the following:

The fluid which surrounds the foetus.



Watch Video Solution

34. Give appropriate biological or technical terms for the following:

The relaxation phase of the heart.



Watch Video Solution

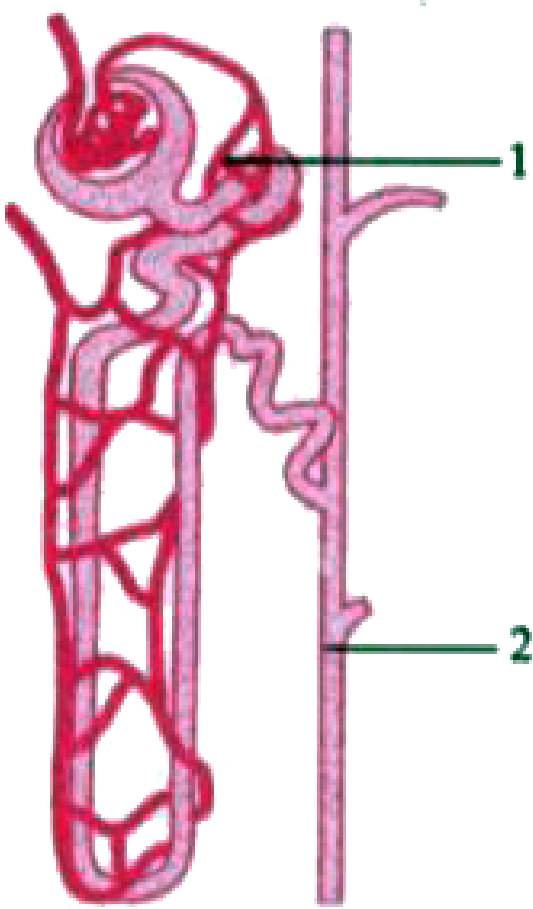
35. Give biological term for the following

The difference between the birth rate and the death rate.



Watch Video Solution

36. The diagram given below is that of a structure present in a human kidney. Study the same and answer the questions that follow:

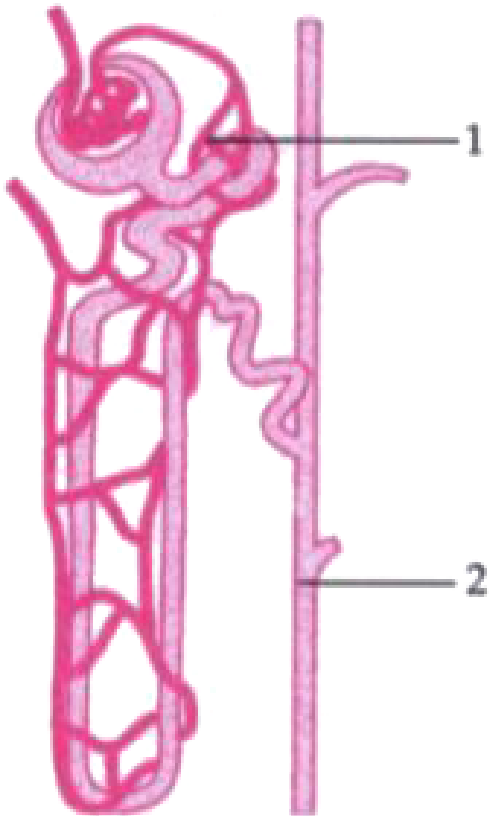


Name the structure represented in the diagram.



[Watch Video Solution](#)

37. The diagram given below is that of a structure present in a human kidney. Study the same and answer the questions that follow:



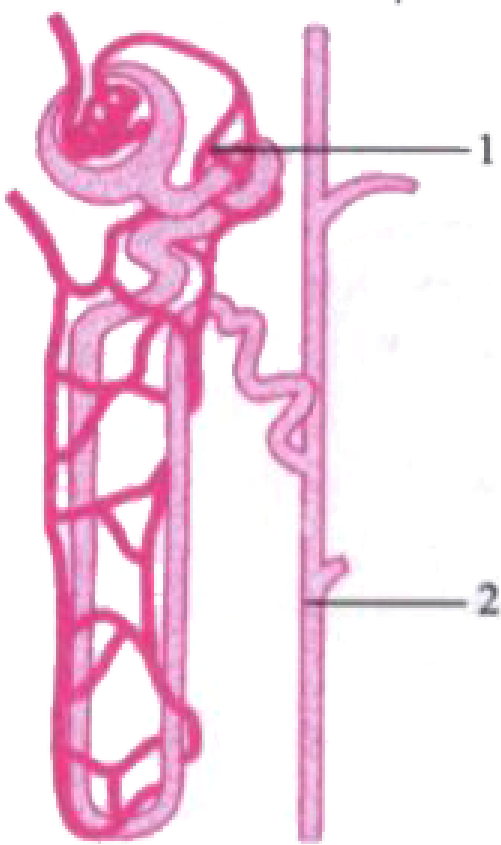
What is the liquid entering part '1' called ?

Name two substances present in this liquid that are reabsorbed in the tubule.



Watch Video Solution

38. The diagram given below is that of a structure present in a human kidney. Study the same and answer the questions that follow:



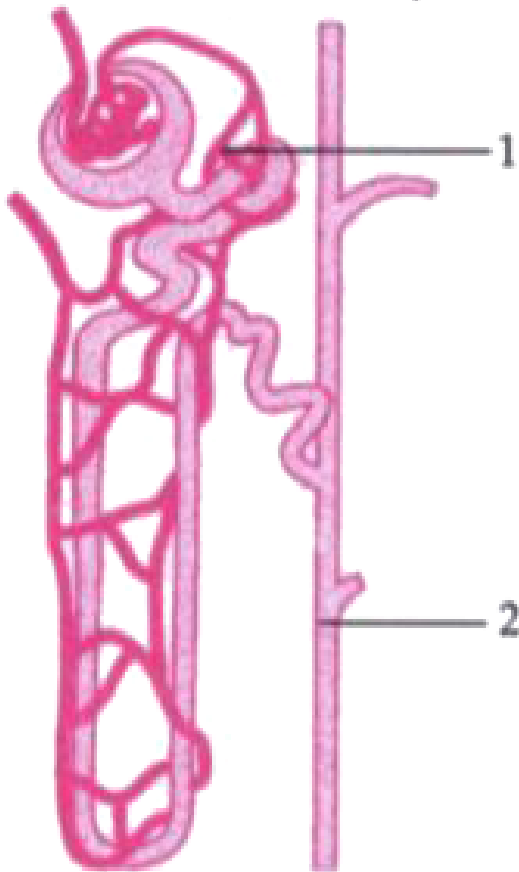
What is the fluid that comes to part '2' called ?

Name the main nitrogenous waste in it.



Watch Video Solution

39. The diagram given below is that of a structure present in a human kidney. Study the same and answer the questions that follow:

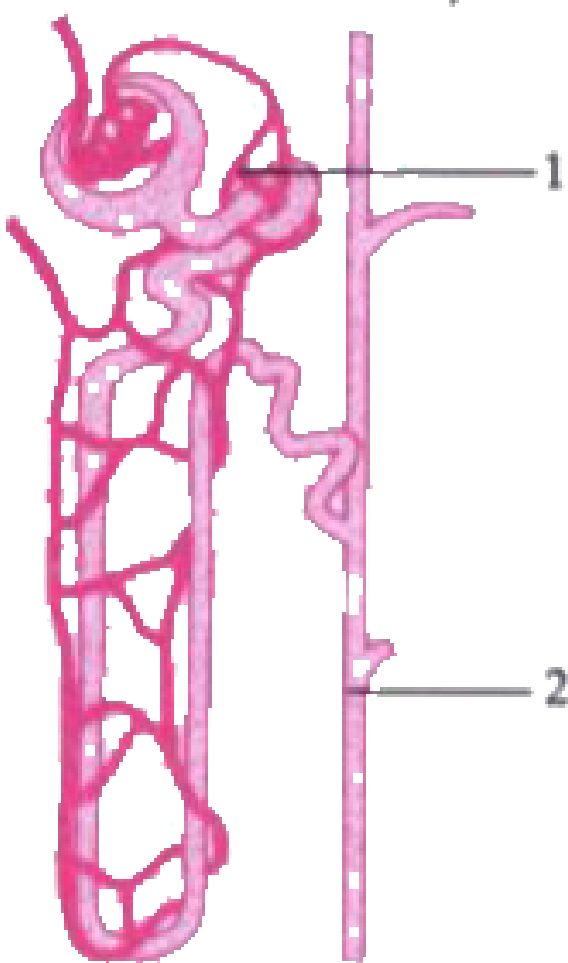


Mention the three main steps involved in the formation of the fluid



Watch Video Solution

40. The diagram given below is that of a structure present in a human kidney. Study the same and answer the questions that follow:



Name the substance which may be present in the fluid in part 2' if a person suffers from Diabetes mellitus.



Watch Video Solution

41. Differentiate between the following pair on the basis of what is mentioned within bracket
leaf and liver (from In which glucose is stored)



Watch Video Solution

42. Differentiate between the following pair on the basis of what is mentioned within bracket
ATP and AIDS (expand the abbreviations)



Watch Video Solution

43. Differentiate between :

Testosterone and Oestrogen (organ which secretes]



Watch Video Solution

44. Differentiate between the following pair on the basis of what is mentioned within brackets:

Ureter and Urethra [function]



Watch Video Solution

45. Differentiate between the following pairs

on the basis of what is mentioned in brackets:

Hypotonic solution and Hypertonic solution

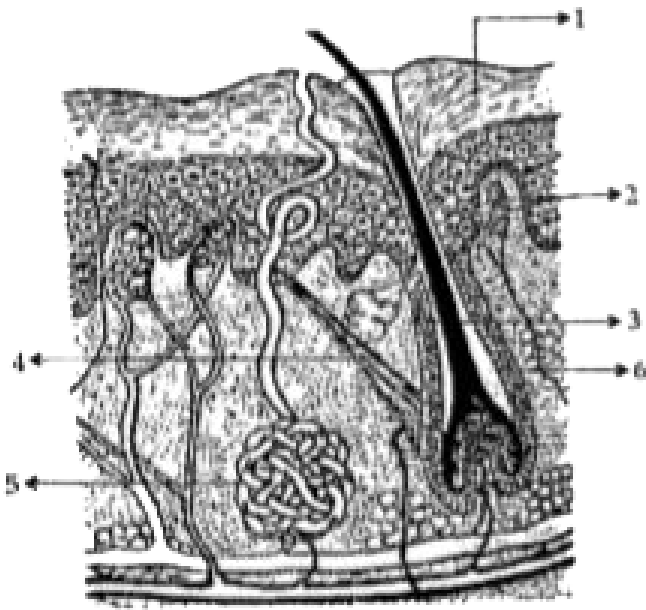
[condition of a plant cell when placed in them]



Watch Video Solution

46. Study the diagram and answer the

questions that follow :

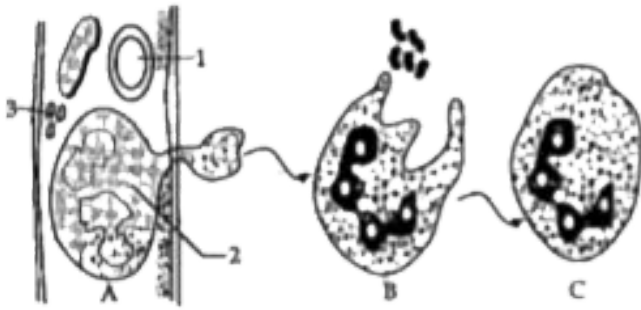


Label the parts 1 - 4.



[Watch Video Solution](#)

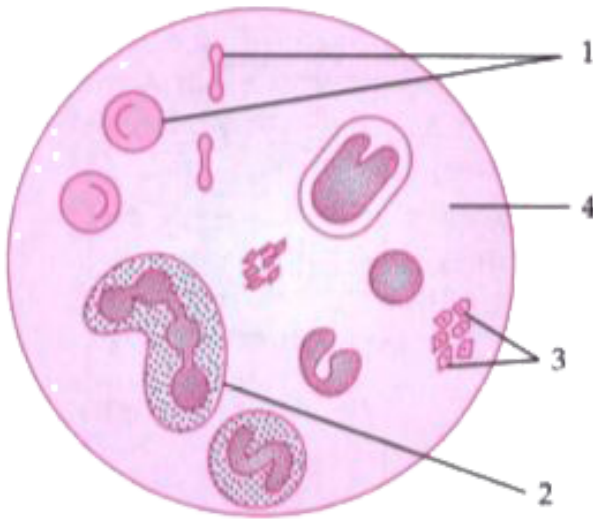
47. Study the diagrams given below and answer the questions tht follow:



Mention two structural differences between 1 and 2

[Watch Video Solution](#)

48. Given below is a diagram of a human blood smear. Study the diagram and answer the questions that follow:

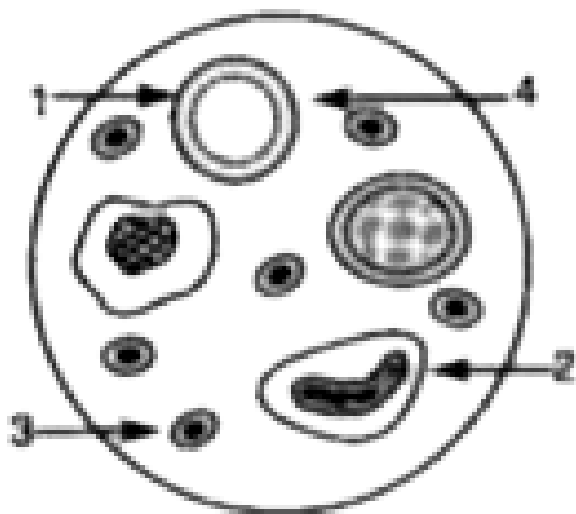


Name the soluble protein found in part 4 which forms insoluble threads during clotting of blood



Watch Video Solution

49. Given below is a diagram of a human blood smear. Study the diagram and answer the questions that follow:



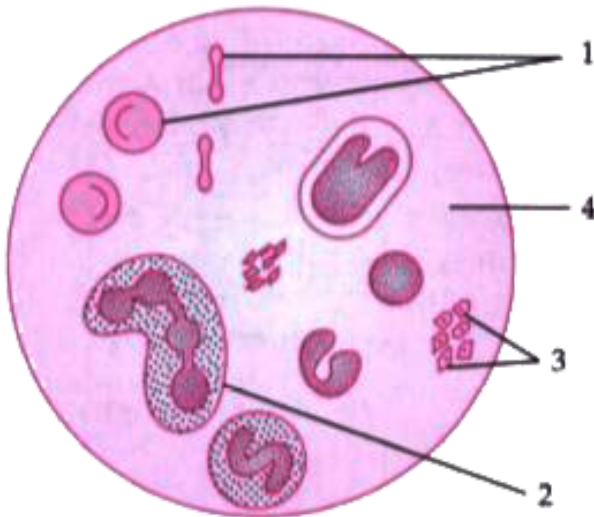
Smear of human blood

What is the average lifespan of the component numbered '1' ?



Watch Video Solution

50. Given below is a diagram of a human blood smear. Study the diagram and answer the questions that follow:



Component numbered '1' do not have certain organelles but are very efficient in their function Explain.



[Watch Video Solution](#)

51. Give biological reason for the following statement

Education is very important for population control.



[Watch Video Solution](#)

52. Comment upon the following:

The placenta is an important structure for the

development of a foetus.



[Watch Video Solution](#)

53. Give biological reason for the following statements :

Plants growing in fertilized soil are often found to wilt if the soil is not adequately watered.



[Watch Video Solution](#)

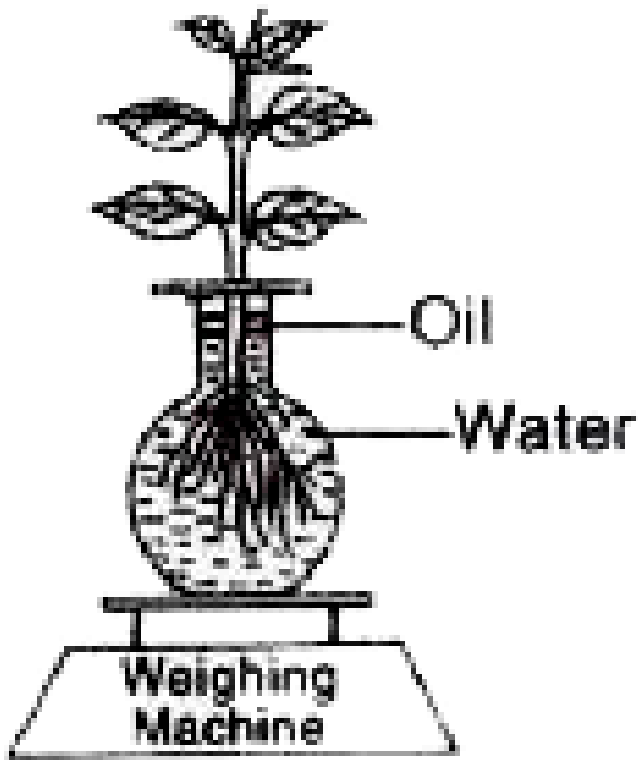
54. Give biological reason for the following:

We should not put sharp objects into our ears.



Watch Video Solution

55. The diagram below represents a process in plants. The setup was placed in bright sunlight. Answer the following questions :



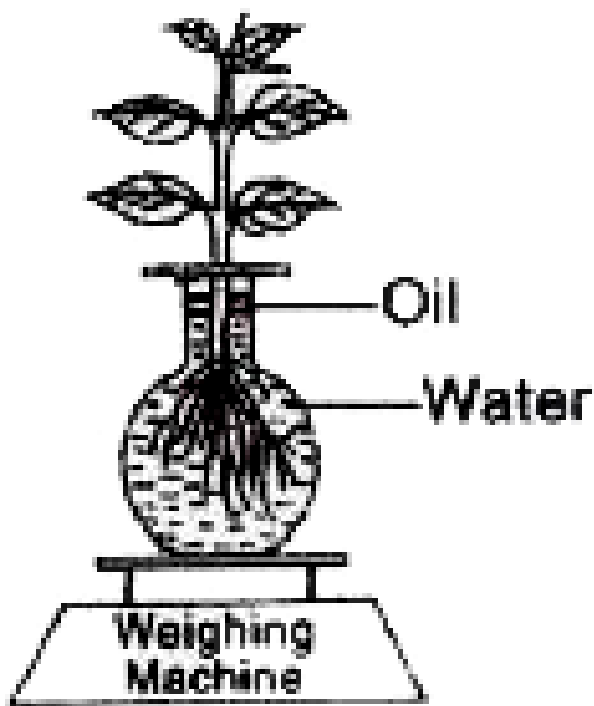
Name the physiological process depicted in the diagram .

Why was oil added to the water?



Watch Video Solution

56. The diagram below represents a process in plants. The setup was placed in bright sunlight. Answer the following questions :



When placed in bright sunlight for four hours, what do you observe with regard to the initial

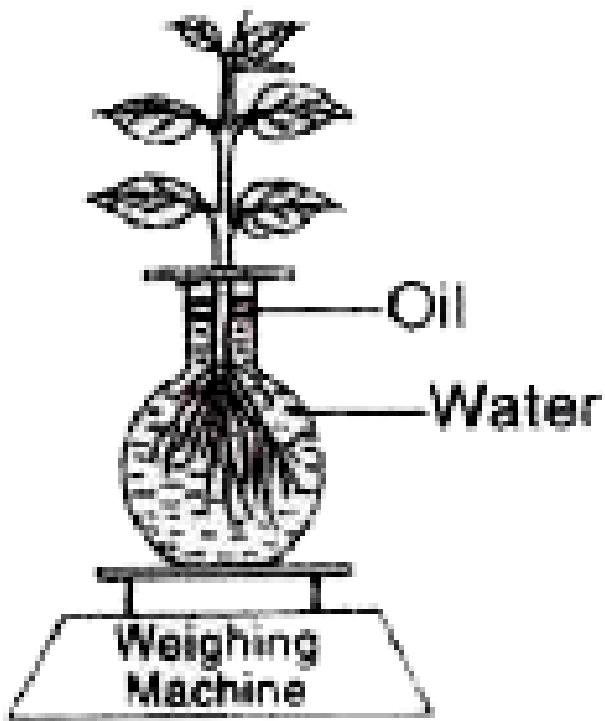
and final weight of the plant?

Give a suitable reason for your answer.



Watch Video Solution

57. The diagram below represents a process in plants. The setup was placed in bright sunlight. Answer the following questions :



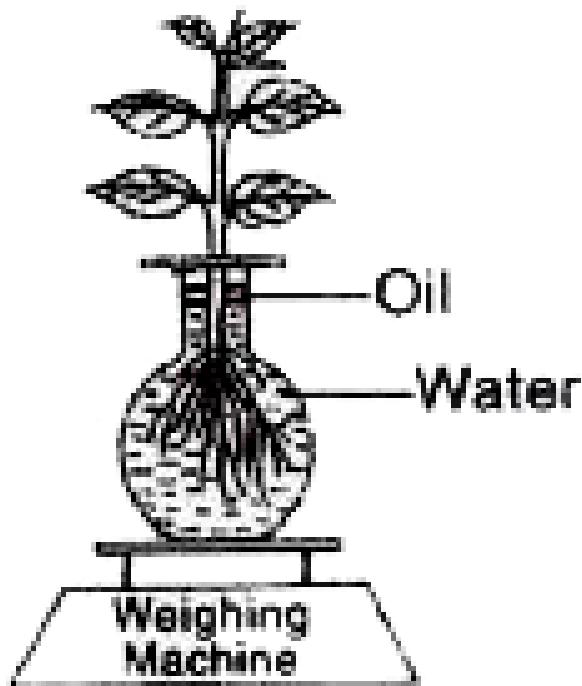
What happens to the level of water when this setup is placed in:

1. Humid conditions?
2. Windy conditions?



Watch Video Solution

58. The diagram below represents a process in plants. The setup was placed in bright sunlight. Answer the following questions :

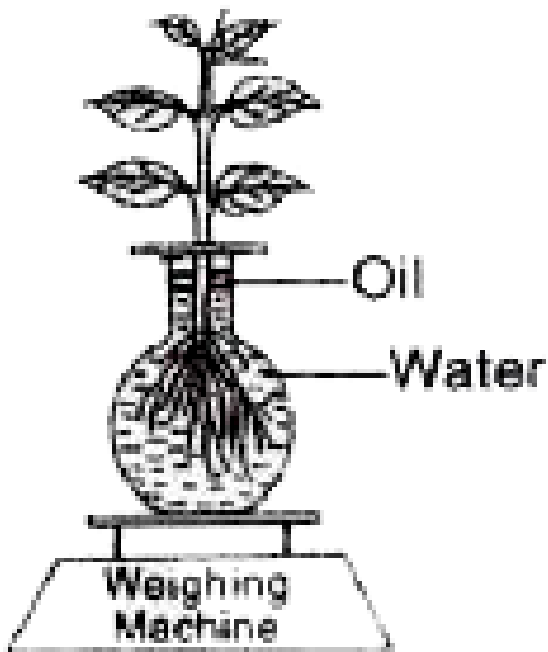


Mention any three adaptations found in plants to overcome this process?



[Watch Video Solution](#)

59. The diagram below represents a process in plants. The setup was placed in bright sunlight. Answer the following questions :



Explain the term 'Guttation'



[Watch Video Solution](#)

60. A pea plant which is homozygous for Green pods which are inflated [GGII) is crossed with a homozygous plant for yellow pods which are constricted (ggii). Answer the following questions:

Give the phenotype and genotype of the F generation. Which type of pollination has occurred to produce F, generation?



[Watch Video Solution](#)

61. A pea plant which is homozygous for Green pods which are inflated [GGII) is crossed with a homozygous plant for yellow pods which are constricted (ggii). Answer the following questions:

Write the phenotypic ratio of the F generation.



Watch Video Solution

62. Give biological reason for the following statements :

Plants growing in fertilized soil are often found to wilt if the soil is not adequately watered.



[Watch Video Solution](#)

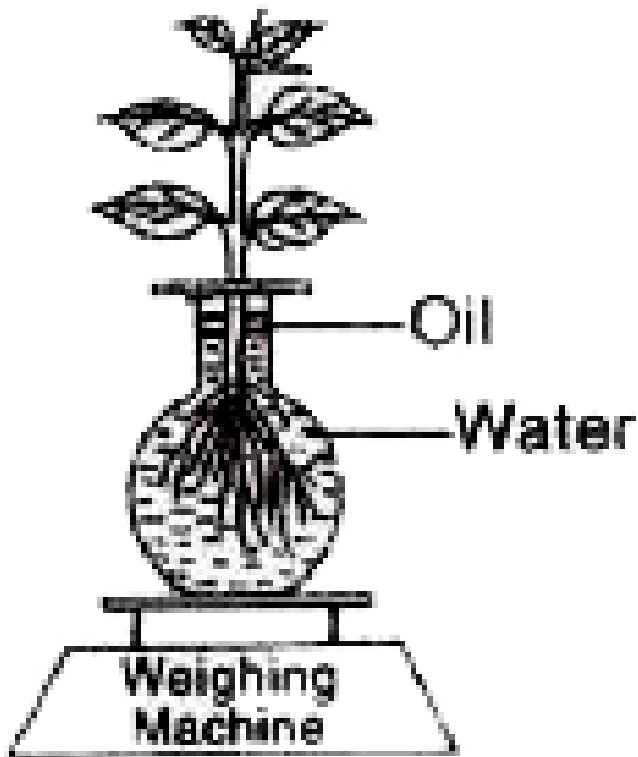
63. Give biological reason for the following:

We should not put sharp objects into our ears.



[Watch Video Solution](#)

64. The diagram below represents a process in plants. The setup was placed in bright sunlight. Answer the following questions :



Name the physiological process depicted in

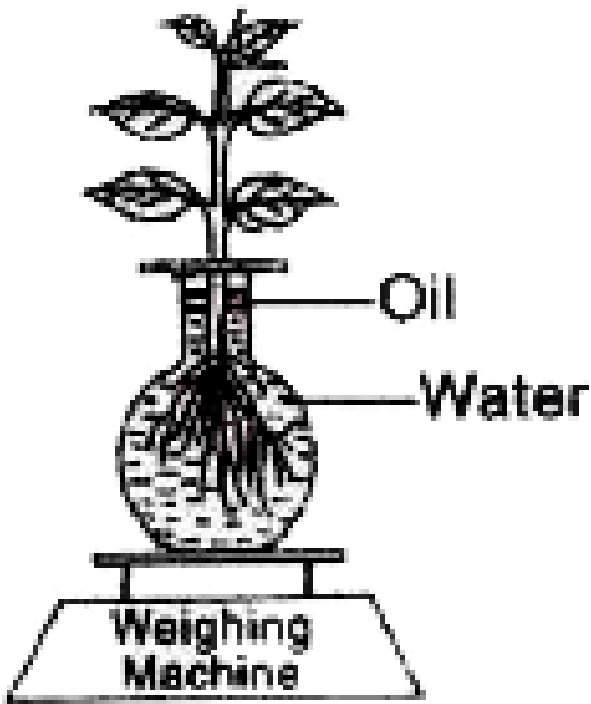
the diagram .

Why was oil added to the water?



[Watch Video Solution](#)

65. The diagram below represents a process in plants. The setup was placed in bright sunlight. Answer the following questions :



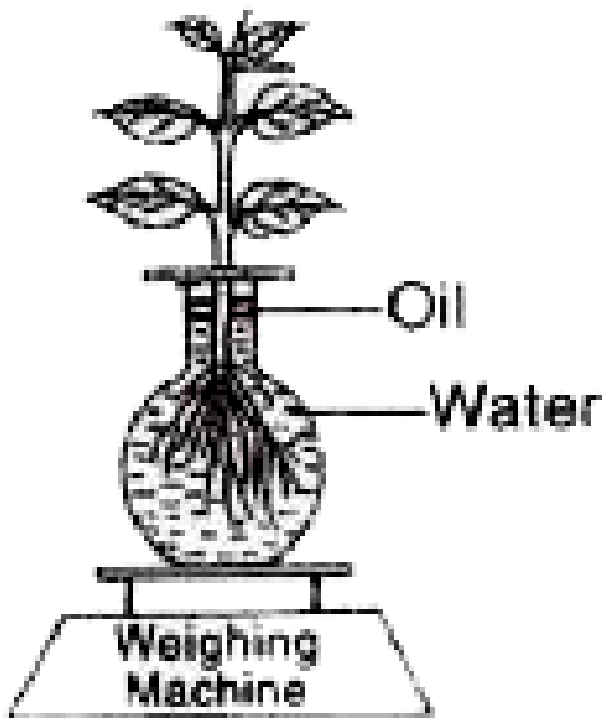
When placed in bright sunlight for four hours, what do you observe with regard to the initial and final weight of the plant?

Give a suitable reason for your answer.



Watch Video Solution

66. The diagram below represents a process in plants. The setup was placed in bright sunlight. Answer the following questions :



What happens to the level of water when this

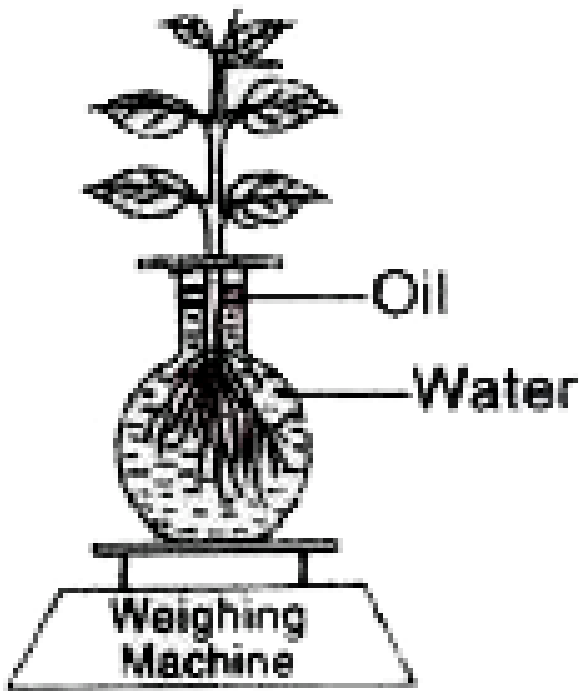
setup is placed in:

1. Humid conditions? 2. Windy conditions?



[Watch Video Solution](#)

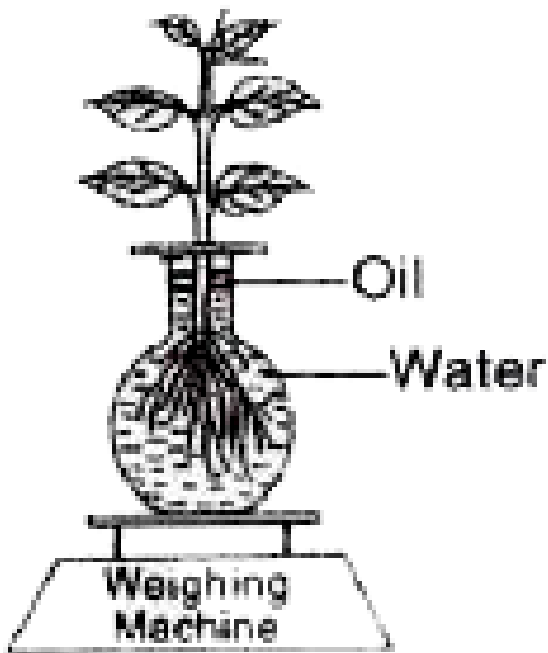
67. The diagram below represents a process in plants. The setup was placed in bright sunlight. Answer the following questions :



Mention any three adaptations found in plants to overcome this process?

 [Watch Video Solution](#)

68. The diagram below represents a process in plants. The setup was placed in bright sunlight. Answer the following questions :



Explain the term 'Guttation'



Watch Video Solution

69. A pea plant which is homozygous for Green pods which are inflated [GGII) is crossed with a homozygous plant for yellow pods which are constricted (ggii). Answer the following questions:

Give the phenotype and genotype of the F generation. Which type of pollination has occurred to produce F₁ generation?



Watch Video Solution

70. A pea plant which is homozygous for Green pods which are inflated [GGII) is crossed with a homozygous plant for yellow pods which are constricted (ggii). Answer the following questions:

Write the phenotypic ratio of the F generation.



[Watch Video Solution](#)

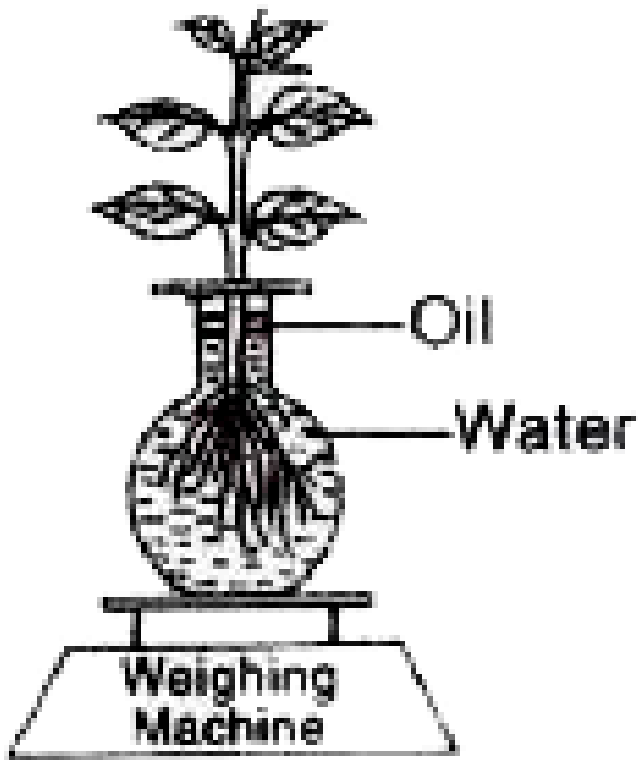
71. Give biological reason for the following:

We should not put sharp objects into our ears.



Watch Video Solution

72. The diagram below represents a process in plants. The setup was placed in bright sunlight. Answer the following questions :



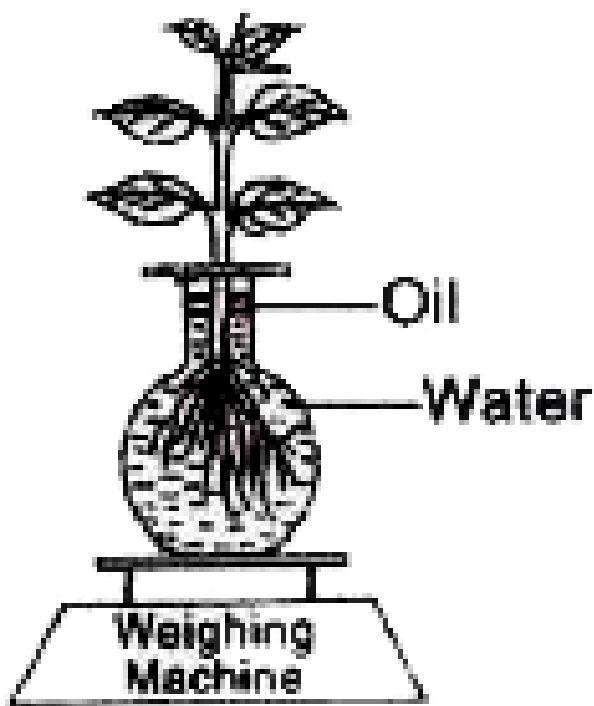
Name the physiological process depicted in the diagram .

Why was oil added to the water?



Watch Video Solution

73. The diagram below represents a process in plants. The setup was placed in bright sunlight. Answer the following questions :



When placed in bright sunlight for four hours, what do you observe with regard to the initial

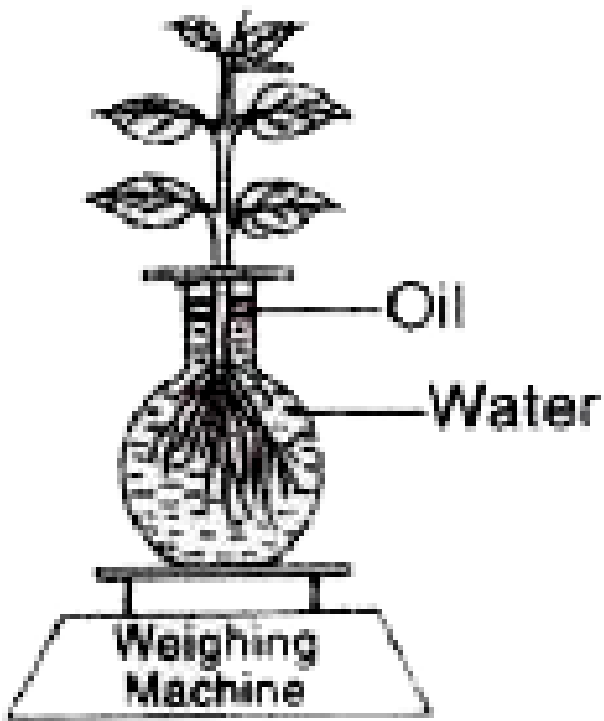
and final weight of the plant?

Give a suitable reason for your answer.



Watch Video Solution

74. The diagram below represents a process in plants. The setup was placed in bright sunlight. Answer the following questions :



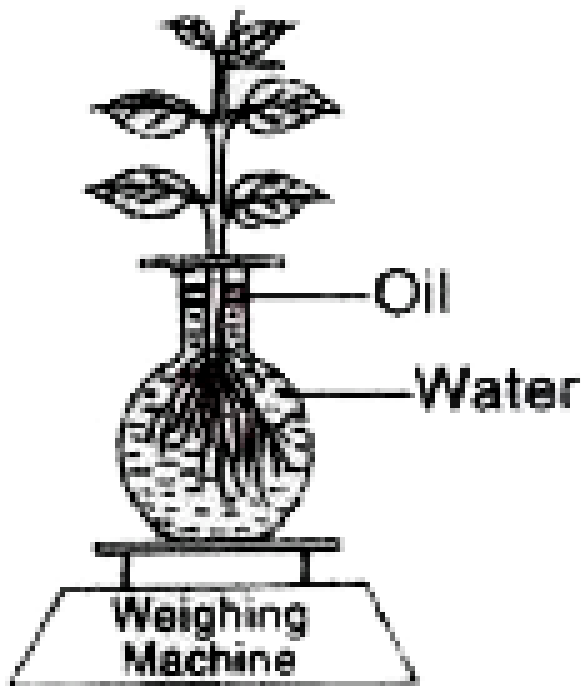
What happens to the level of water when this setup is placed in:

1. Humid conditions?
2. Windy conditions?



Watch Video Solution

75. The diagram below represents a process in plants. The setup was placed in bright sunlight. Answer the following questions :

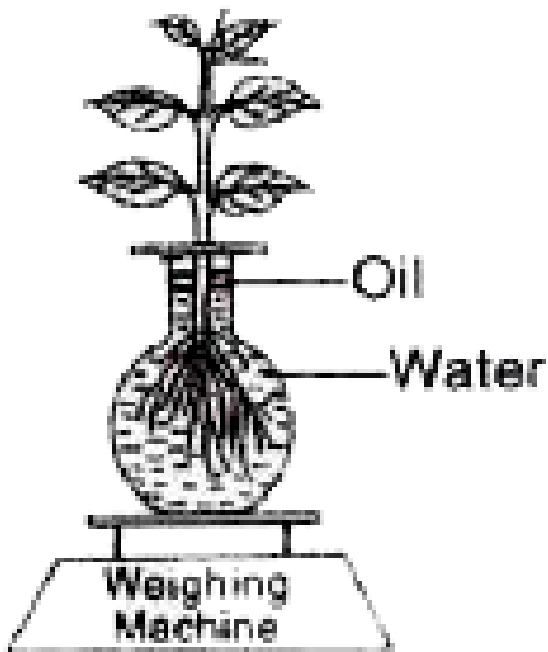


Mention any three adaptations found in plants to overcome this process?



[Watch Video Solution](#)

76. The diagram below represents a process in plants. The setup was placed in bright sunlight. Answer the following questions :



Explain the term 'Guttation'



[Watch Video Solution](#)

77. A pea plant which is homozygous for Green pods which are inflated [GGII) is crossed with a homozygous plant for yellow pods which are constricted (ggii). Answer the following questions:

Give the phenotype and genotype of the F generation. Which type of pollination has occurred to produce F₁ generation?



[Watch Video Solution](#)

78. A pea plant which is homozygous for Green pods which are inflated [GGII) is crossed with a homozygous plant for yellow pods which are constricted (ggii). Answer the following questions:

Write the phenotypic ratio of the F generation.



[Watch Video Solution](#)