



# BIOLOGY

## BOOKS - EVERGREEN BIOLOGY (ENGLISH)

### SAMPLE QUESTION PAPER -5

#### Section I

1. A membrane that disappears during late prophase.



[Watch Video Solution](#)

2. Give the biological/technical terms for the following:

The stage of cell division in which the nuclear membrane disappears and the chromosomes become short and thick.



[Watch Video Solution](#)

**3.** Give technical term for:

A membrane which allows the passage of molecules selectively.



**Watch Video Solution**

**4.** The repeated units of DNA molecule.



**Watch Video Solution**

5. Gene is a specific part of a chromosome that determines hereditary characteristics.



[Watch Video Solution](#)

6. Explain (i) Tropic hormone.

(ii) Hormone

(iii) Diabetes insipidus



[Watch Video Solution](#)

7. Write short notes on Diffusion.



[Watch Video Solution](#)

8. Explain the term Osmoregulation.



[Watch Video Solution](#)

9. Define the following term : Synapse.



[Watch Video Solution](#)

**10.** Explain the term Reflex action.



**Watch Video Solution**

**11.** State the main functions of the following :

Auditory nerve



**Watch Video Solution**

**12.** Phloem fibres and phloem parenchyma are dead cells.



**Watch Video Solution**

**13. State the main functions of the following:**

Tears



**Watch Video Solution**

**14. Define Coronary artery**



**Watch Video Solution**

15. Cerebrospinal fluid is secreted by



Watch Video Solution

16. Expand the following biological abbreviations:

(i) NADP

(ii) ADH

(iii) ATP

(iv) DNA

(v) TSH





17. State one difference in each of the following with respect to the aspect stated within the brackets.

(i) Mitosis and meiosis (chromosome number)

(ii) Cranial and spinal nerves (total number in adults)

(iii) Tubectomy and vasectomy (parts operated)

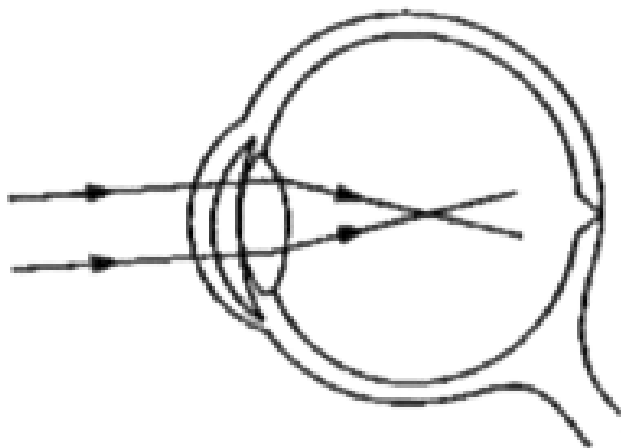
(iv) Colourblindness and night blindness (caused due to)

(v) Cerebrum and spinal cord (arrangement of neurons)



[Watch Video Solution](#)

**18.** Given below is a diagram depicting a defect of the human eye, study the same and then answer the questions that follow:



(i) Name the defect shown in the diagram.

(ii) What are the two possible reasons that cause this defect?

(iii) Name the type of lens used to correct this defect.

(iv) With the help of a diagram show how the defect shown above is rectified using a suitable lens.



**Watch Video Solution**

**19.** Slate the main functions of:

Lymphocytes



**Watch Video Solution**

**20.** The Leydig cells secrete



**Watch Video Solution**

**21.** Guard cells help in



**Watch Video Solution**

22. Q) Eustachian tube connects



[Watch Video Solution](#)

23. Corpus luteum secretes



[Watch Video Solution](#)

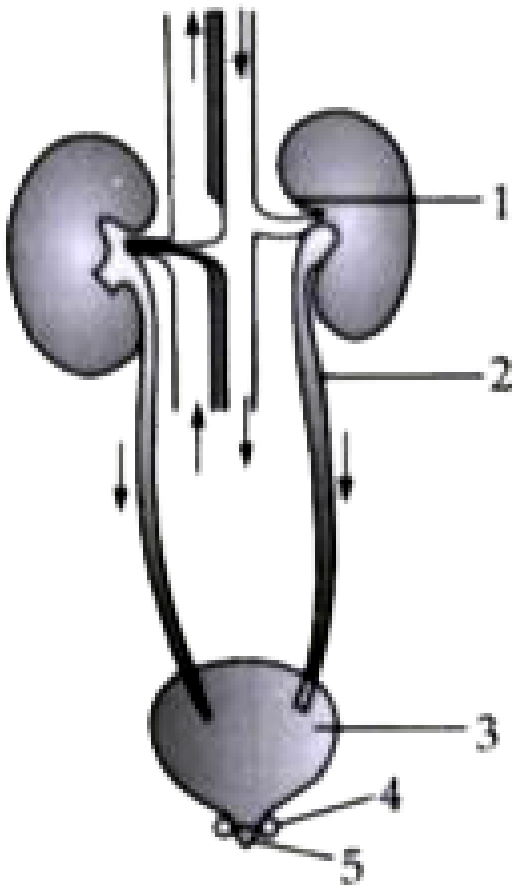
24. Name the structure that transmits characteristics from parents to offspring.



Watch Video Solution

## Section II

1. The diagram given below represents an organ system in the human body. Study the same and answer the questions that follow:



Name the structural and functional units of the part marked 1.



**Watch Video Solution**

2. Give biological reason for the following :

On sprinkling common salt on grass growing in a lawn, the grass is killed



[Watch Video Solution](#)

3. Comment upon the following :

Wilted lettuce becomes crisp/firm when placed in cold water for a while .



[Watch Video Solution](#)



4. Gametes have a haploid number of chromosomes.



**Watch Video Solution**

5. Account for the following briefly :

Herbaceous plants growing in well watered soils are found to wilt on a hot day.



**Watch Video Solution**

**6. Give reasons :**

Plants begin to die when excess of soluble fertilizers are added to the soil.

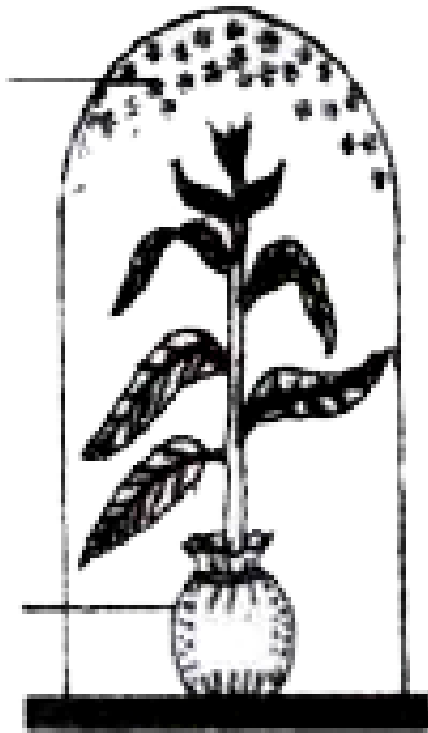


**Watch Video Solution**

**7. Given below is an experimental set-up to study a particular process:**

WATER

COVERED  
POTTED



Name the process being studied.



**Watch Video Solution**

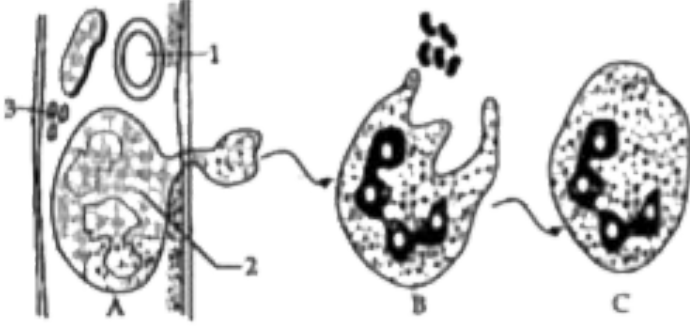
**8.** Match the items given in Column A with the most appropriate ones in Column B and rewrite the correct matching pairs .

Column A	Column B
(i) Cretinism	(a) Hypersecretion of adrenal cortex
(ii) Diabetes insipidus	(b) Hyposecretion of thyroxine
(iii) Exophthalmic goitre	(c) Hyposecretion of growth hormone
(iv) Adrenal virilism	(d) Hyposecretion of vasopressin
(v) Dwarfism	(e) Hyposecretion of adrenal cortex
	(f) Hypersecretion of growth hormone
	(g) Hypersecretion of thyroxine



**Watch Video Solution**

**9.** Study the diagrams given below and answer the questions that follow:



Identify the phenomenon occurring in A.  
Explain the phenomenon.

[Watch Video Solution](#)

**10.** The following paragraph is related to absorption of water from the soil. Copy and complete the following paragraph by selecting the correct word from those given in the box.

You may use the term only once .

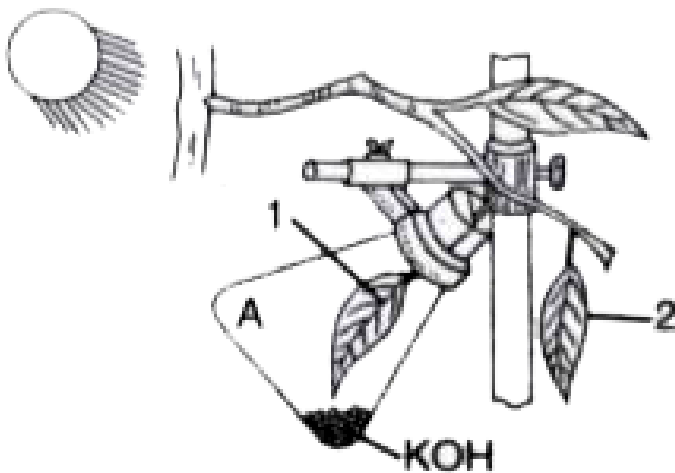
Exosmosis, Hypertonic, Osmosis, Isotonic,  
Hypotonic, Cortical, Endosmosis

Water enters the root hair from the soil by the process of . . . . . This is because the solution in the soil is ..... whereas the cell sap in the root hair cell is .... The water then passes through the .... cells by cell to cell .... and reaches the xylem of the root.



**Watch Video Solution**

11. The figure given below represents an experiment to demonstrate a particular aspect of photosynthesis. The alphabet "A" represents a certain condition inside the flask



What is the aim of the experiment

[Watch Video Solution](#)

**12.** Match the items given in Column A with the most appropriate ones in Column B and REWRITE the correct matching pairs:

Column A	Column B
(i) Cranial nerves	Testosterone
(ii) Leydig cells	Natural reflex
(iii) Acetylcholine	12 pairs
(iv) Spinal nerves	Prolactin
(v) Sneezing	Neurotransmitter
	18 pairs
	31 pairs
	Conditioned reflex

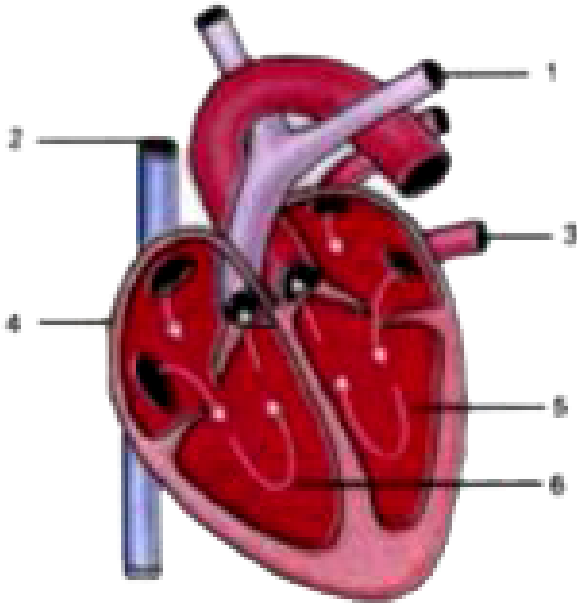


**Watch Video Solution**

**13.** Given alongside is a diagram of the human heart showing its internal structure. Label the parts marked 1 to 6, and answer the following



questions.



Name the main artery which takes the blood from heart to different parts of the body.



**Watch Video Solution**

**14.** Differentiate between the following pair on the basis of what is mentioned within bracket leaf and liver (from In which glucose is stored)



**Watch Video Solution**

**15.** Differentiate between the following pair on the basis of what is mentioned within bracket NADP and ATP ( Expand the abbreviation)



**Watch Video Solution**

**16. Differentiate between :**

Testosterone and Oestrogen (organ which secretes]



**Watch Video Solution**

**17. Differentiate between the following pair on the basis of what is mentioned within brackets:**

Ureter and Urethra [function]



**Watch Video Solution**

**18.** Differentiate between the following pairs on the basis of what is mentioned in brackets:

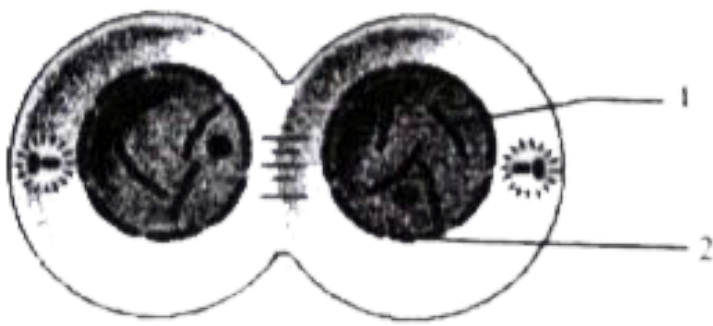
Hypotonic solution and Hypertonic solution

[condition of a plant cell when placed in them]



**Watch Video Solution**

**19.** Study the diagram given below which represents a stage during the mitotic cell division and answer the questions that follow:



Identify the stage giving suitable reasons.



**Watch Video Solution**

20. How does the arrangement of neurons in the spinal cord differ from that of the brain?



**Watch Video Solution**

**21.** The part of ear responsible for static balance is



**Watch Video Solution**

**22.** Answer the following questions briefly :

Explain how the human eye adapts itself to bright light and dim light.



**Watch Video Solution**

**23.** What is Parthenocarpy ? Give one example.



**Watch Video Solution**

**24.** Give biological reason for the following statements :

Plants growing in fertilized soil are often found to wilt if the soil is not adequately watered.



**Watch Video Solution**