



# BIOLOGY

## BOOKS - NAVNEET PUBLICATION

### ANIMAL CLASSIFICATION

#### Examples

1. Which criteria are used for classification of organisms ?



**Watch Video Solution**

2. How the plants are classified ?



**Watch Video Solution**

## Exercise

1. Choose the correct alternative and write its alphabet against the sub question number:

System of classification based on evolution was brought into practice by.....and .....

A. Darwin, Mendel

B. Lamarck, De Vries

C. Morgan, Mayor

D. Dobzansky, Meyer

**Answer: D**



**Watch Video Solution**

**2. Choose the correct alternative and write its alphabet against the sub question number:**

Artificial method of animal classification was proposed by .....

A. Aristotle

B. Darwin

C. Lamarck

D. Whittaker

**Answer: A**



**Watch Video Solution**

3. Choose the correct alternative and write its alphabet against the sub question number:

Animals attached to substratum are called ..... animals.

A. sessile

B. sedentary

C. lame

D. motionless

**Answer: B**



Watch Video Solution

4. Choose the correct alternative and write its alphabet against the sub question number:

In coelenterates, ..... are useful for capturing the prey whereas ..... inject the toxin in the body of prey.

A. tentacles, cnidoblast

B. hands, legs

C. flagella, sting

D. cilia, sting cells

**Answer: A**



**Watch Video Solution**

5. Choose the correct alternative and write its alphabet against the sub question number:

Body of annelidan animals is long, cylindrical and..... Segmented

A. annular

B. metamerically

C. jointed

D. cuticular

**Answer: B**



**Watch Video Solution**

**6.** Choose the correct alternative and write its alphabet against the sub question number:

..... is second largest phylum in animal kingdom

A. Mollusca



B. Arthropoda

C. Porifera

D. Platyhelminthes

**Answer: A**



**Watch Video Solution**

7. Choose the correct alternative and write its alphabet against the sub question number:

Endoskeleton of Cyclostomata animals is

.....

A. bony

B. bony and cartilaginous

C. cartilaginous

D. none of the above

**Answer: C**



**Watch Video Solution**

**8.** Choose the correct alternative and write its alphabet against the sub question number:

Body cavity between the body and internal organs is called .....

A. gastrocoel

B. enteron

C. coelom

D. cave

**Answer: C**



**Watch Video Solution**

9. Choose the correct alternative and write its alphabet against the sub question number:

Larvae of..... metamorphose into adults after settling down at bottom of the sea.

Hemichordata

Urochordata

Cephalochordata

Cyclostomata

A. Hemichordata

B. Urochordata

C. Cephalochordata

## D. Cyclostomata

**Answer: B**



**Watch Video Solution**

**10.** Body organization of unicellular animals is referred to as \_\_\_\_\_ organization.

A. cellular

B. tissue

C. protoplasmic

D. organ

**Answer: C**



**Watch Video Solution**

**11.** Choose the correct alternative and write its alphabet against the sub question number:  
  
..... is a cold blooded animal.

A. Bat

B. Snake

C. Rabbit

D. Elephant

**Answer: B**



**Watch Video Solution**

**12.** Choose the correct alternative and write its alphabet against the sub question number:

Calcereous spines are present on the body of ..... animal.

fish

snail

sponge

star fish

A. fish

B. snail

C. sponge

D. star fish

**Answer: D**



**Watch Video Solution**



**13.** Choose the correct alternative and write its alphabet against the sub question number:

Due to which similar characteristic honey bee and cockroach are included in the same phylum?

- A. Wings
- B. Three pair of legs
- C. Jointed appendages
- D. Antenna

**Answer: C**



Watch Video Solution

**14.** Which special cells are present in the body of sponges (Porifera)?

A. Collar cells

B. Cnidoblasts

C. Germ cells

D. Ectodermal cells

**Answer: A**



Watch Video Solution

15. Which of the following animals' body shows bilateral symmetry?

A. Starfish

B. Jellyfish

C. Earthworm

D. Sponge

**Answer: C**



**Watch Video Solution**

**16.** Which of the following animals can regenerate it's broken body part?

A. Cockroach

B. Frog

C. Sparrow

D. Starfish

**Answer: D**



**Watch Video Solution**

**17. Bat is included in which class ?**

A. Amphibia

B. Reptilia

C. Aves

D. Mammalia

**Answer: D**



**Watch Video Solution**

**18.** Write whether the following statements are true or false with proper explanation :

Greek philosopher Linnaeus was the first to perform the animal classification



**Watch Video Solution**

**19.** Write whether the following statements are true or false with proper explanation :

Greek philosopher Linnaeus was the first to perform the animal classification





[Watch Video Solution](#)

**20.** Write whether the following statements are true or false with proper explanation :

Arthropoda animals bear numerous pores on their body.



[Watch Video Solution](#)

**21.** Write whether the following statements are true or false with proper explanation :

Porifera animals have special] type of collar cells



**Watch Video Solution**

**22.** Write whether the following statements are true or false with proper explanation :

Aschelminthes have acoelomate and bilaterally symmetrical body.



**Watch Video Solution**



**23.** Write whether the following statements are true or false with proper explanation :

Planet Earth has highest number of animals from phylum Arthropoda.



**Watch Video Solution**

**24.** Write whether the following statements are true or false with proper explanation :

Animals belonging to phylum Annelida perform locomotion with the help of tube-feet





[Watch Video Solution](#)

**25.** Write whether the following statements are true or false with proper explanation :

Herdmania has notochord in only tail region and hence it is called Urochordate.



[Watch Video Solution](#)

**26.** Write whether the following statements are true or false with proper explanation :

Mammals breathe with the help of lungs.



**Watch Video Solution**

**27.** Write whether the following statements are true or false with proper explanation :

Amphibians are warm blooded.



**Watch Video Solution**

**28.** Match the columns:

(1)	Phylum	Characteristics
(1)	Mollusca	(a) Collar cells
(2)	Hemichordata	(b) Mantle
		(c) Trunk
		(d) Cnidoblasts



Watch Video Solution

29. Match the columns:

(2) Phylum	Characteristics
(1) Porifera	(a) Tunic
(2) Coelenterata	(b) Collar cells
	(c) Tentacles bearing cnidoblasts
	(d) Mantle



Watch Video Solution

**30. Match the columns:**

(3) Subphylum/Class	Characteristics
(1) Cyclostomata	(a) Collar cells
(2) Urochordata	(b) Sucker
	(c) Tunic
	(d) Chitinous exoskeleton



**Watch Video Solution**

**31. Find the odd one out:**

Physalia, Hyalonema, Euplectella, Spongilla



**Watch Video Solution**

**32.** Find the odd one out:

Planaria, Liverfluke, Filarial worm, Tapeworm



**Watch Video Solution**

**33.** Find the odd one out:

Star fish, Sea-urchin, Nereis, Sea-cucumber



**Watch Video Solution**

**34.** Find the odd one out:

Cockroach, Butterfly, Spider, Honey bee



**Watch Video Solution**

**35.** Find the odd one out:

Amphioxus, Herdmania, Doliolum, Oikopleura



**Watch Video Solution**

**36.** Find the odd one out:

Frog, Tortoise, Toad, Salamander



**Watch Video Solution**

**37.** Find the odd one out:

Tube feet, Setae, Parapodia, Sucker



**Watch Video Solution**



**38.** Find the odd one out:

Shark, Sting ray, Electric ray, Pomfret



**Watch Video Solution**

**39.** Find the correlation :

Annelida : Earthworm :: Platyhelminthes :

.....



**Watch Video Solution**

**40.** Find the correlation :

Horse : Mammal :: Seahorse : .....



**Watch Video Solution**

**41.** Find the correlation :

Parapodia : Annelida :: Tube feet : .....



**Watch Video Solution**

**42.** Find the correlation :

Frog : Amphibia :: Turtle : .....



**Watch Video Solution**

**43.** Find the correlation :

Proboscis : Hemichordata : : Suctorial mouth :

.....



**Watch Video Solution**

**44.** Find the correlation :

Bird from very cold regions : Penguin :: Aquatic

Mammal from very cold regions : .....



**Watch Video Solution**

**45.** Complete the chart:

Body cavity	Germ Layer	Phylum
Absent	.....	Porifera
Absent	Triploblastic	.....
Pseudocoelom	.....	Aschelminthes
Present	.....	Arthropoda



**Watch Video Solution**

46. Complete the chart:

Type	Character	Examples
Cyclostomata	.....	.....
.....	Gill respiration	.....
Amphibia	.....	.....
.....	.....	Whale, Cat, Man
.....	Poikilotherms	.....



Watch Video Solution

47. Distinguish between:

Butterfly and Bat.



Watch Video Solution

**48. Distinguish between:**

Non-Chordates and Chordates



**Watch Video Solution**

**49. Distinguish between :**

phylum Platyhelminthes and Phylum Aschelminthes. OR Write any two points of differences between flat worms and round worms.



**Watch Video Solution**

**50. Distinguish between:**

Urochordata and Cephalochordata



**Watch Video Solution**

**51. Distinguish between:**

Cyclostomata and Pisces



**Watch Video Solution**

**52. Distinguish between :**

Amphibia and Reptilia.



**Watch Video Solution**

**53. Aves and Mammalia**



**Watch Video Solution**

**54. Identify me.**

I am diploblastic and acoelomate. Which phylum do I belong to?





[Watch Video Solution](#)

**55.** Identify me.

My body is radially symmetrical. Water vascular system is present in my body. I am referred as fish though I am not. What is my name?



[Watch Video Solution](#)

**56. Identify me:**

I live in your small intestine. Pseudocoelom is present in my thread like body. In which phylum will you include me?



**Watch Video Solution**

**57. Identify me:**

Though I am multicellular, there are no tissues in my body. What is the name of my phylum?



**Watch Video Solution**

**58. Identify me.**

Who am I? I have suckers. I am blood sucking ectoparasite and my body is segmented.



**Watch Video Solution**

**59. Identify me.**

Who am I? I have suckers. I am blood sucking ectoparasite and my body is segmented.



**Watch Video Solution**

## 60. Classification-based questions:

identify me:

I have chitinous exoskeleton, I have four pairs of walking appendages. I can sting you. Who am I ? What phylum do I belong to ?



**Watch Video Solution**

61. Write the characteristics of following animals with reference to their classification:

Bath sponge.





[Watch Video Solution](#)

**62.** Write the characteristics of following animals with reference to their classification:  
Jelly fish.



[Watch Video Solution](#)

**63.** Write the characteristics of following animals with reference to their classification:  
Grasshopper.



[Watch Video Solution](#)

**64.** Write the characteristics of following animals with reference to their classification:

Rohu



**Watch Video Solution**

**65.** Write the characteristics of following animals with reference to their classification:

Frog



**Watch Video Solution**

**66.** Write the characteristics of following animals with reference to their classification:

Lizard.



**Watch Video Solution**

**67.** Write the characteristics of following animals with reference to their classification:

Penguin.



**Watch Video Solution**

**68.** Write the characteristics of following animals with reference to their classification:

Elephant.



**Watch Video Solution**

**69.** Characters of a phylum are given below.

Read them carefully and answer the questions

::

(a) Spines of calcium carbonate are present on the body. (b) These animals are exclusively



marine. (c) They perform the locomotion with the help of tube feet. (d) Their skeleton is made up of calcareous plates or spicules.

Animals of which phylum show the above character?



**Watch Video Solution**

**70.** Characters of a phylum are given below.

Read them carefully and answer the questions

::

(a) Spines of calcium carbonate are present on

the body. (b) These animals are exclusively marine. (c) They perform the locomotion with the help of tube feet. (d) Their skeleton is made up of calcareous plates or spicules.

Give an example from that phylum.



**Watch Video Solution**

**71.** Characters of a phylum are given below.

Read them carefully and answer the questions

::

(a) Spines of calcium carbonate are present on

the body. (b) These animals are exclusively marine. (c) They perform the locomotion with the help of tube feet. (d) Their skeleton is made up of calcareous plates or spicules.

Give an example from that phylum.



**Watch Video Solution**

**72.** Identify my class/phylum and give one example of it.

I have mammary glands and exoskeleton in the form of hair.



**Watch Video Solution**

**73.** Identify my class/phylum and give one example of it.

We form the highest number of animals on the planet. We have bilateral symmetry and our exoskeleton is in the form of chitin.



**Watch Video Solution**

**74.** Identify my class/phylum and give one example of it.

I live in your small intestine, my body is long and thread like and pseudocoelomate.



**Watch Video Solution**

**75. Classification-based questions:**

Tell me who am I? What is my class/phylum?

My body is divided into proboscis, collar and trunk. I am marine animal.



**Watch Video Solution**

## 76. Classification-based questions:

Tell me who am I? What is my class/phylum?

I stay inside two shells. My body is divided into head, foot and visceral mass.



**Watch Video Solution**

## 77. Classification-based questions:

Tell me who am I? What is my class/phylum?

I am male as well as female. I am endoparasite

having a coelmate and bilaterally symmetrical and flattened body.



**Watch Video Solution**

**78. Classification-based questions:**

Tell me who am I? What is my class/phylum?

I am sedentary marine animal drinking water all the time through numerous pores on the body.



**Watch Video Solution**

## 79. Classification-based questions:

Tell me who am I? What is my class/phylum?

I am venomous, eight legged creature havinf  
chitinous exoskeleton.



[Watch Video Solution](#)

## 80. Classification-based questions:

Tell me who am I? What is my class/phylum?

My body is covered by tunic. As a larva I swim  
but as an adult I settle down.



[Watch Video Solution](#)



**81.** Give scientific classification of shark upto class.



**Watch Video Solution**

**82.** Identify the class of given animals and write one characteristic of it:

Kangaroo



**Watch Video Solution**

**83.** Identify the class of given animals and write one characteristic of it:

Penguin



**Watch Video Solution**

**84.** Identify the class of given animals and write one characteristic of it:

Crocodile



**Watch Video Solution**

**85.** Identify the class of given animals and write one characteristic of it:

Frog



**Watch Video Solution**

**86.** Identify the class of given animals and write one characteristic of it:

Sea- horse.



**Watch Video Solution**

**87.** Give scientific reasons.

Our body irritates if it comes in contact with jellyfish.



**Watch Video Solution**

**88.** Balanoglossus is a connecting link between Non-chordates and Chordates.



**Watch Video Solution**

**89.** Balanoglossus is a connecting link between Non-chordates and Chordates.



**Watch Video Solution**

**90.** Vertebrates are Chordates but all Chordates are not Vertebrates.



**Watch Video Solution**

**91.** Give scientific reasons :

Though tortoise lives on land as well as in water, it cannot be included in class- Amphibia.



**Watch Video Solution**

**92.** Give scientific reasons:

Body temperature of reptiles is not constant.



**Watch Video Solution**

**93.** Write in brief about progressive changes in animal classification.



**Watch Video Solution**

**94.** State four benefits of animal classification?



**Watch Video Solution**

**95.** What is the exact difference between grades of organization and symmetry? Explain

with examples?



**Watch Video Solution**

**96.** Answer the following questions:

Into which phyla is Non-Chordata divided? In which three subphyla are Chordates divided?



**Watch Video Solution**

**97.** To which phylum does cockroach belong?

Justify your answer with scientific reasons.





**Watch Video Solution**

**98.** Write four distinguishing characters of phylum-Echinodermata.



**Watch Video Solution**

**99.** Answer the following questions:

Write the characteristics of chordates.



**Watch Video Solution**

**100.** Answer the following questions:

Write the characteristics of vertebrates.



**Watch Video Solution**

**101.** Animals like gharial and crocodile live in land. Are they amphibians or reptiles?



**Watch Video Solution**

**102.** Animals like whale, walrus live in water (ocean). Whether they are included in Pisces or Mammalia?



**Watch Video Solution**

**103.** Write short note on Benefits of classification.



**Watch Video Solution**

**104.** Write short notes on:

Germ layers.



**Watch Video Solution**

**105.** Write short note on Coelom.



**Watch Video Solution**

**106.** Write short note on Notochord.



**Watch Video Solution**

**107.** complete the paragraph by choosing the appropriate words given in the brackets :

(Linnaeus, ~ Dobzhansky, Carl Woese, Theophrastus, Artificial method, Aristotle, Natural system, Traditional system)

Time to time, different scientists have tried to classify the animals. Greek philosopher..... was the first to perform the animal classification. Aristotle classified the animals, according to the criteria like body size, habits and habitats. classification proposed by

Aristotle is known as ..... Besides Aristotle, artificial method of classification was followed by ....., Pliny, John Ray and ..... Later on, .....of classification' was followed. Natural system of classification was based on various other criteria. By the time, system of classification based on evolution was also brought into practice. It was used by ..... and Meyer. Recently, ..... has also proposed the animal classification.



**Watch Video Solution**

**108.** complete the paragraph by choosing the appropriate words given in the brackets :

Class Amphibia consist of animals which are strictly ..... only during their larval stages. At that time they breathe through their ..... Tadpoles are such stages which later ..... to form adult frog. Adult frog respire with the help of ..... when in water and with ..... when on land. Thus, it is a true ..... For performing cutaneous respiration, i.e. respiration through skin, they lack ..... in any form. The skin is also kept moist by staying near the water bodies. Amphibians do not

have a ..... but eyes are bulging and prominent, this solves the problems of vision.



**Watch Video Solution**

**109.** Read the paragraph and answer the questions given below :

Locomotion is considered as an important characteristics of the animals. However, animals belonging to Porifera are said to be sedentary. Every other phylum has typical locomotory organs. E.g. Nereis crawls with the



help of parapodia, whereas earthworm buries in soil by setae. Spiders have four pairs of walking legs, crab has five while all insects have three pairs of walking legs. The walking legs are also called appendages. Starfish moves with the help of tube feet. Snails and bivalves use muscular foot for locomotion. Birds flying with their spread out wings and fish swimming with their fins, both have spindle-shaped body tapering at both the ends. While flying or swimming such body offers least resistance during locomotion. Mammals have two pairs of limbs while

animals like snakes are limbless. Other animals belonging to the class of snakes also have very weak limbs, which make them creep on the ground.

Answer the question:

What are the locomotory organs in phylum Annelida?



**Watch Video Solution**

**110.** Read the paragraph and answer the questions given below :

Locomotion is considered as an important characteristics of the animals. However, animals belonging to Porifera are said to be sedentary. Every other phylum has typical locomotory organs. E.g. Nereis crawls with the help of parapodia, whereas earthworm buries in soil by setae. Spiders have four pairs of walking legs, crab has five while all insects have three pairs of walking legs. The walking legs are also called appendages. Starfish moves with the help of tube feet. Snails and bivalves use muscular foot for locomotion. Birds flying with their spread out wings and

fish swimming with their fins, both have spindle-shaped body tapering at both the ends. While flying or swimming such body offers least resistance during locomotion. Mammals have two pairs of limbs while animals like snakes are limbless. Other animals belonging to the class of snakes also have very weak limbs which make them creep on the ground.

Answer the question:

Which phylum has a characteristic of jointed appendages?



**Watch Video Solution**

**111.** Read the paragraph and answer the questions given below :

Locomotion is considered as an important characteristics of the animals. However, animals belonging to Porifera are said to be sedentary. Every other phylum has typical locomotory organs. E.g. Nereis crawls with the help of parapodia, whereas earthworm buries in soil by setae. Spiders have four pairs of walking legs, crab has five while all insects have three pairs of walking legs. The walking

legs are also called appendages. Starfish moves with the help of tube feet. Snails and bivalves use muscular foot for locomotion. Birds flying with their spread out wings and fish swimming with their fins, both have spindle-shaped body tapering at both the ends. While flying or swimming such body offers least resistance during locomotion. Mammals have two pairs of limbs while animals like snakes are limbless. Other animals belonging to the class of snakes also have very weak limbs which make them creep on the ground.

Answer the question:

Which the locomotory organ of animals belong to Phylum Mollusca?



**Watch Video Solution**

**112.** Read the paragraph and answer the questions given below :

Locomotion is considered as an important characteristics of the animals. However, animals belonging to Porifera are said to be sedentary. Every other phylum has typical

locomotory organs. E.g. Nereis crawls with the help of parapodia, whereas earthworm buries in soil by setae. Spiders have four pairs of walking legs, crab has five while all insects have three pairs of walking legs. The walking legs are also called appendages. Starfish moves with the help of tube feet. Snails and bivalves use muscular foot for locomotion. Birds flying with their spread out wings and fish swimming with their fins, both have spindle-shaped body tapering at both the ends. While flying or swimming such body offers least resistance during locomotion.



Mammals have two pairs of limbs while animals like snakes are limbless. Other animals belonging to the class of snakes also have very weak limbs which make them creep on the ground.

Answer the question:

Which class of animals show weak legs?



**Watch Video Solution**

**113.** Read the paragraph and answer the questions given below :

Locomotion is considered as an important characteristics of the animals. However, animals belonging to Porifera are said to be sedentary. Every other phylum has typical locomotory organs. E.g. Nereis crawls with the help of parapodia, whereas earthworm buries in soil by setae. Spiders have four pairs of walking legs, crab has five while all insects have three pairs of walking legs. The walking legs are also called appendages. Starfish moves with the help of tube feet. Snails and bivalves use muscular foot for locomotion. Birds flying with their spread out wings and

fish swimming with their fins, both have spindle-shaped body tapering at both the ends. While flying or swimming such body offers least resistance during locomotion. Mammals have two pairs of limbs while animals like snakes are limbless. Other animals belonging to the class of snakes also have very weak limbs which make them creep on the ground.

Answer the question:

In which class of animals the forelimbs are modified?



**Watch Video Solution**

**114.** Sketch , label and classify

Hydra



**Watch Video Solution**

**115.** Diagram-based questions:

Sketch label and classify the following organism:

Jellyfish



**Watch Video Solution**

**116.** Sketch , label and classify

Planaria



**Watch Video Solution**

**117.** Diagram-based questions:

Sketch label and classfy the following  
organism:

Liverfluke:



**Watch Video Solution**

**118. Diagram-based questions:**

Sketch label and classfy the following organism:

Round worm:



**Watch Video Solution**

**119. Sketch , label and classify**

Earthworm



**Watch Video Solution**

**120. Diagram-based questions:**

Sketch label and classfy the following organism:

Leech



**Watch Video Solution**

**121. Sketch , label and classify**

Butterfly



**Watch Video Solution**

## 122. Diagram-based questions:

Sketch label and classfy the following organism:

Cockroach



**Watch Video Solution**

## 123. Sketch , label and classify

Octopus



**Watch Video Solution**



**124.** Sketch , label and classify

Starfish



**Watch Video Solution**

**125.** Sketch , label and classify

Shark



**Watch Video Solution**

**126.** Sketch , label and classify

Frog



**Watch Video Solution**

**127.** Sketch , label and classify

Wall Lizard



**Watch Video Solution**

**128.** Sketch , label and classify

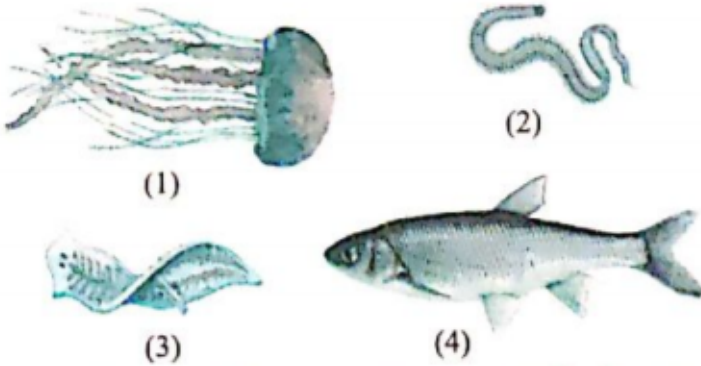
Pigeon



**Watch Video Solution**

### 129. Diagram-based questions:

Label the following animals:

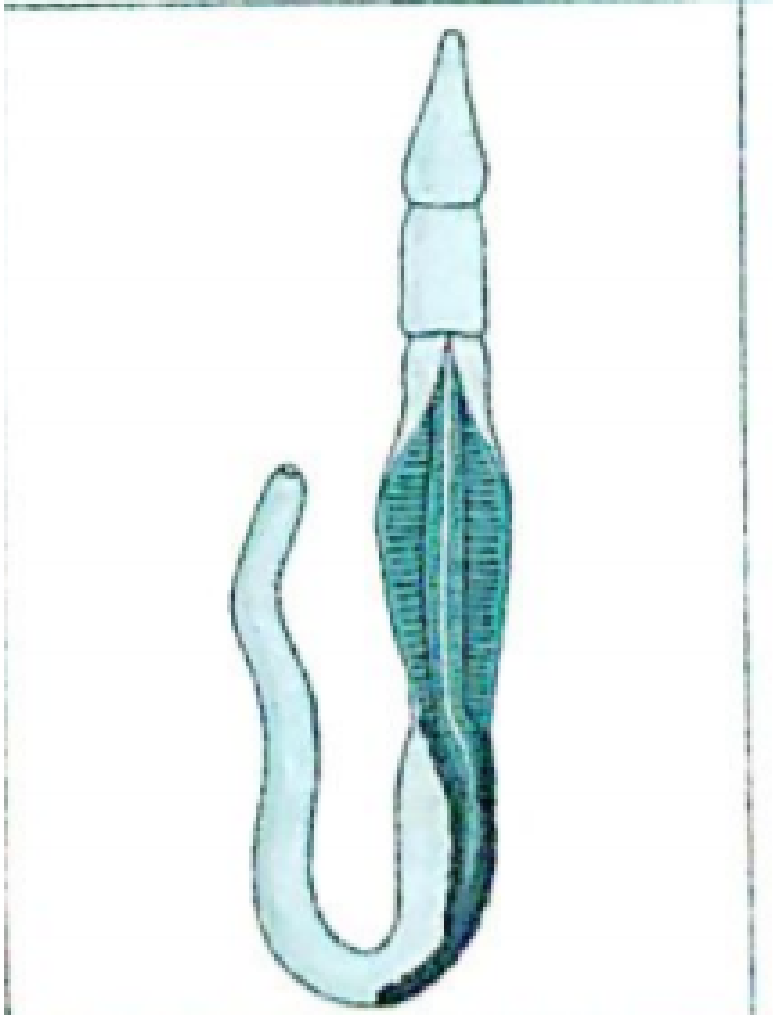


**Watch Video Solution**

### 130. Diagram-based questions:

Identify the animal given in the figure and

label the figure:



Watch Video Solution

### 131. Diagram-based questions:

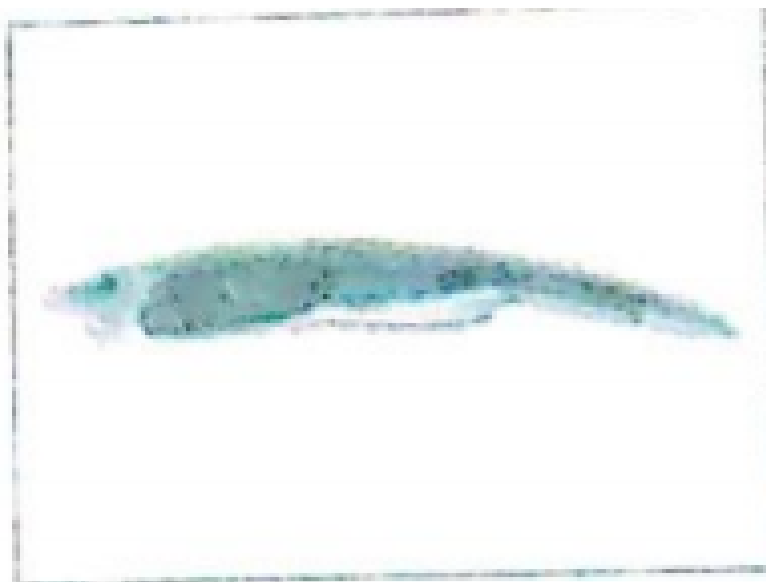
Identify the animal given in the figure and label the figure:



**Watch Video Solution**

### 132. Diagram-based questions:

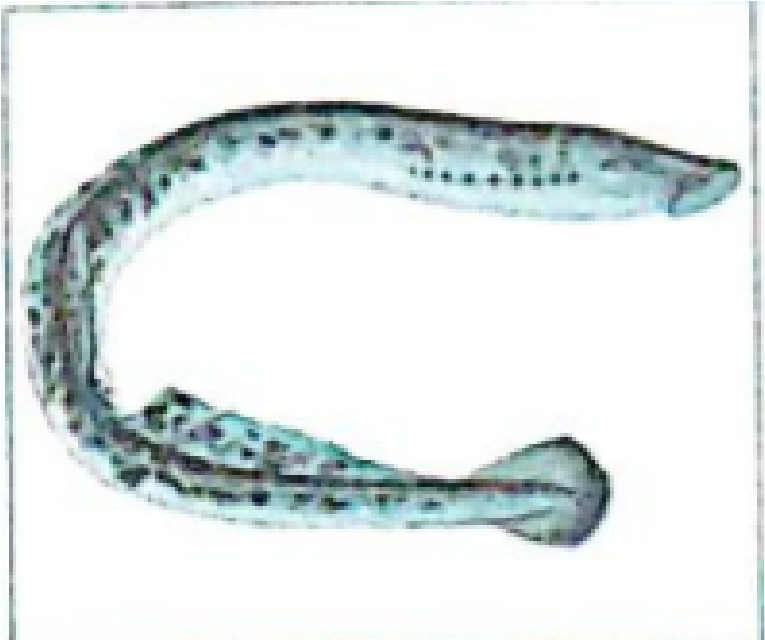
Identify the animal given in the figure and label the figure:



**Watch Video Solution**

**133.** Diagram-based questions:

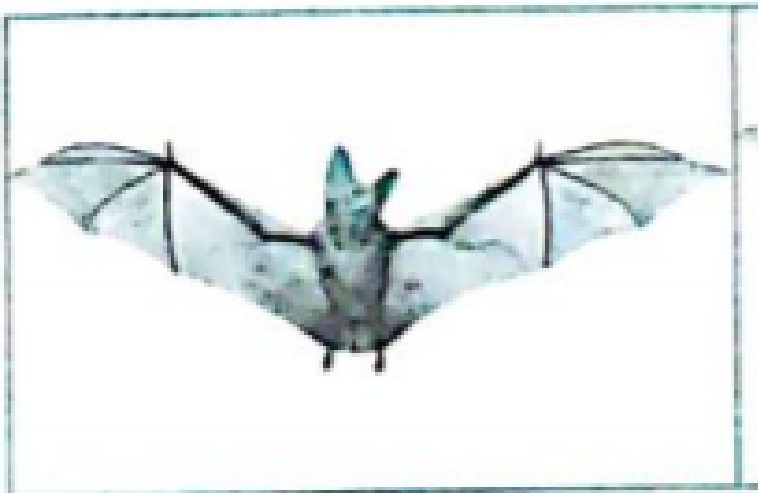
Identify the animal given in the figure and label the figure:



**Watch Video Solution**

**134.** Diagram-based questions:

Identify the animal given in the figure and label the figure:

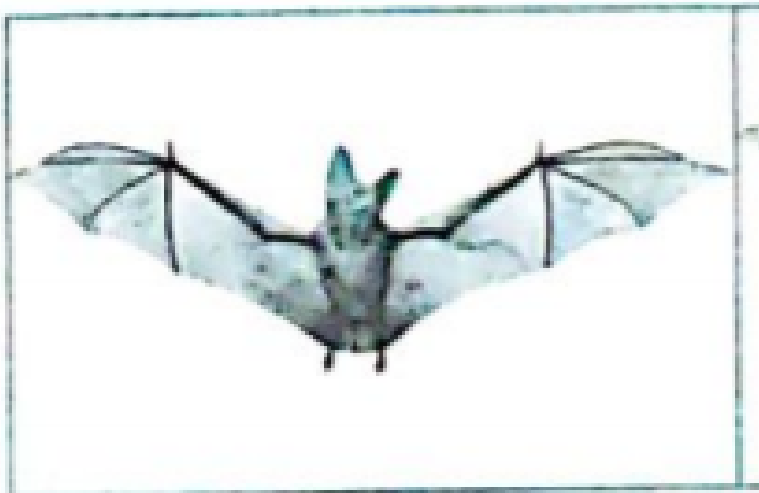


**Watch Video Solution**



**135.** Diagram-based questions:

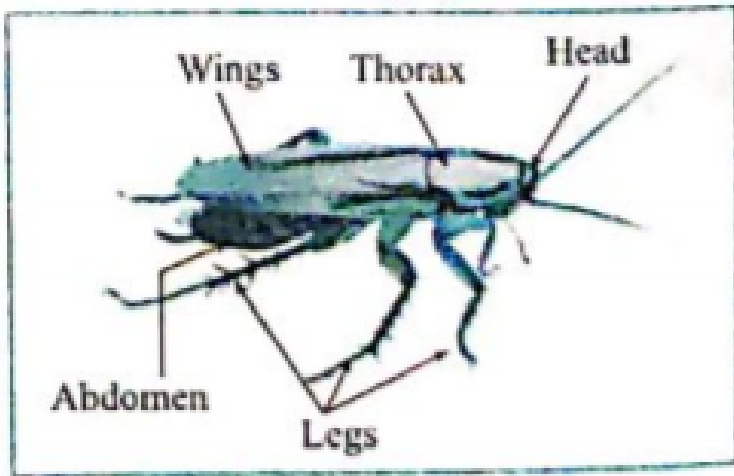
Identify the class of the animal shown in the figure and write any two characteristics.



**Watch Video Solution**

**136.** Diagram-based questions:

Observe the following diagram. Write the answer of the following questions:



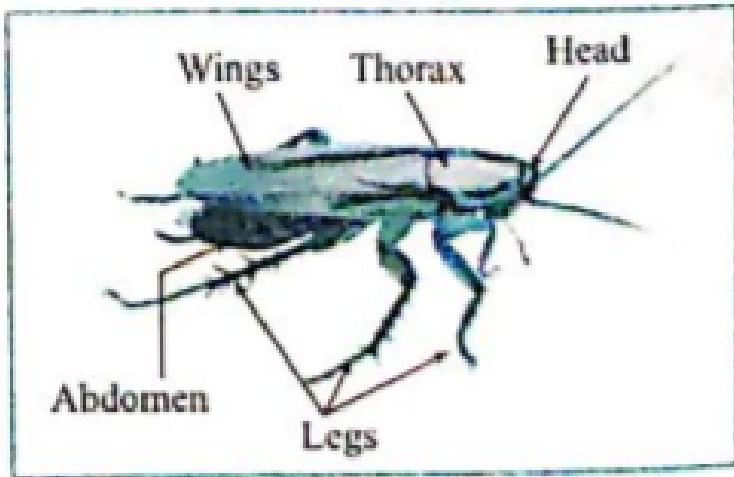
To which phylum does the animal included in the diagram ?



**Watch Video Solution**

### 137. Diagram-based questions:

Observe the following diagram. Write the answer of the following questions:



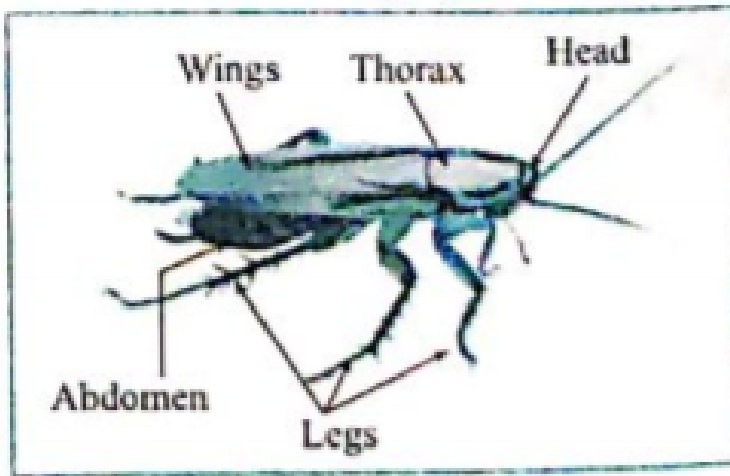
What is the exoskeleton made up ?



**Watch Video Solution**

### 138. Diagram-based questions:

Observe the following diagram. Write the answer of the following questions:



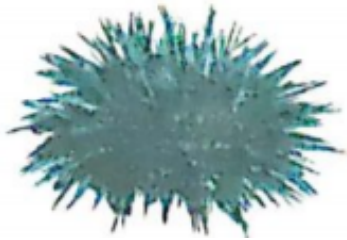
What is symmetry ?



**Watch Video Solution**

### 139. Diagram-based questions:

Observe the figure and answer the following questions:



To which phylum these organisms belong ?

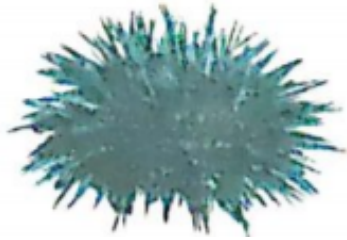


**Watch Video Solution**

### 140. Diagram-based questions:

Observe the figure and answer the following

questions:



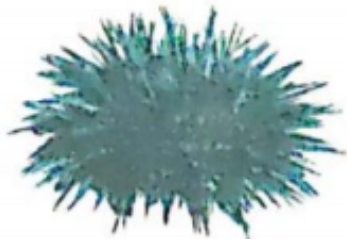
Name the substance with which their body is covered.



**Watch Video Solution**

**141.** Diagram-based questions:

Observe the figure and answer the following questions:



Name their organs of locomotion.



**Watch Video Solution**

**142.** Diagram-based questions:

Name the locomotory organ of animal shown

in the given figure:

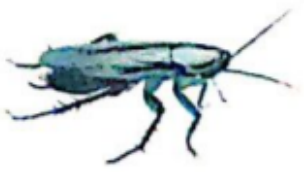


**Watch Video Solution**

**143.** Diagram-based questions:

Observe the figures given below answer the given questions:





In which phylum are these animals included?



**Watch Video Solution**

**144.** Diagram-based questions:

Observe the figures given below answer the given questions:



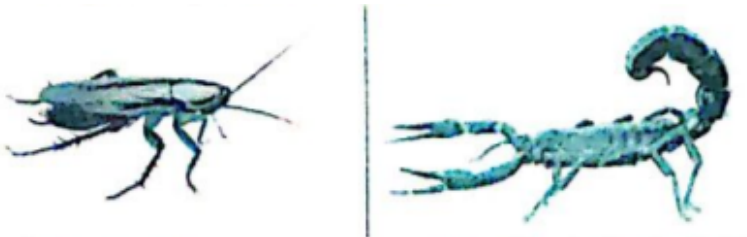
Which substances forms the outer layer of their exoskeleton?



**Watch Video Solution**

**145.** Diagram-based questions:

Observe the figures given below answer the given questions:



What are their locomotory organs ?



**Watch Video Solution**

**146.** Diagram-based questions:

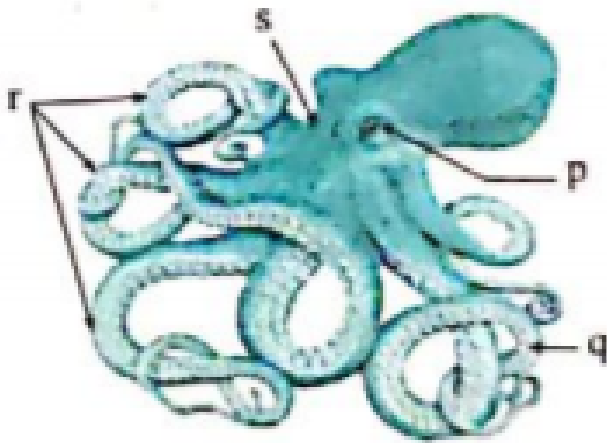
Identify the phylum of the given animal and write any two characteristics of this phylum.



**Watch Video Solution**

**147. Diagram-based questions:**

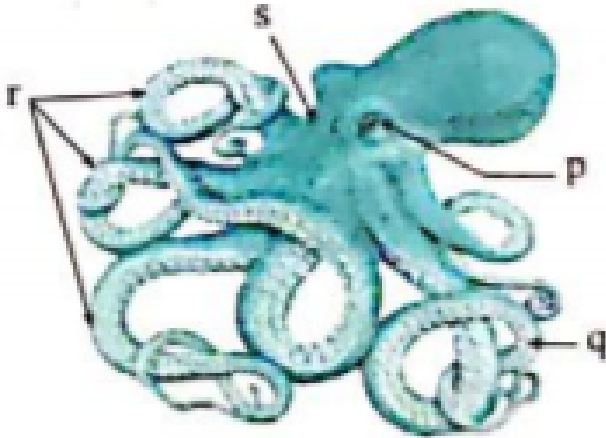
Identify the animal given here.



**Watch Video Solution**

**148.** Diagram-based questions:

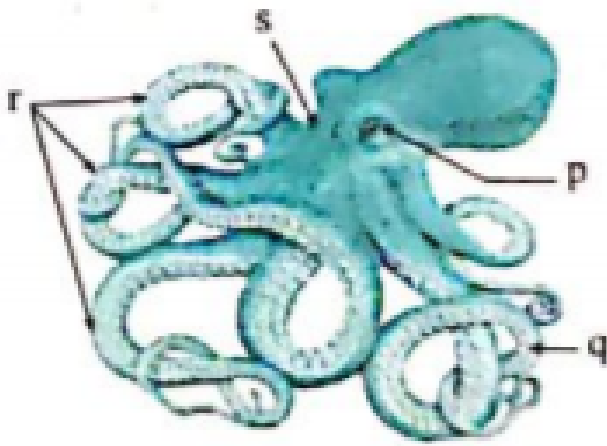
Write the phylum to which it belongs.



**Watch Video Solution**

**149.** Diagram-based questions:

Identify the pointed parts, p, q, r and s.



**Watch Video Solution**

**150.** Diagram-based questions:

Identify and explain from the given figure different type of symmetry.



(a)



(b)



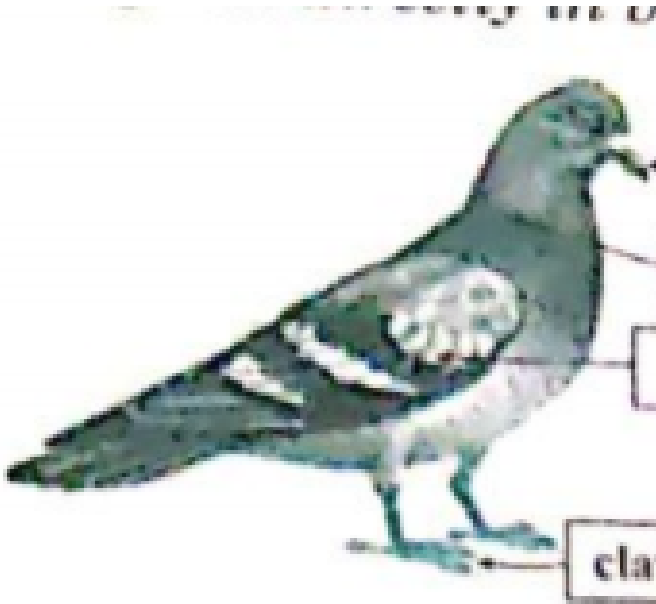
(c)



Watch Video Solution

**151.** Diagram-based questions:

Label the figure.



Watch Video Solution

## 152. Diagram-based questions:

Complete the following chart:

Type	Examples
(A) Pisces	Pomfret, Rohu
(B) Amphibians	Salamander, Toad
(C) Mammalians	Cat, Whale
(D) Reptilians	Crocodile, Snake



**Watch Video Solution**

## 153. Diagram-based questions:

Observe the following figure and answer the following :





Due to which common characteristic the animals shown in the figure belong to the same phylum ?



**Watch Video Solution**

**154.** Diagram-based questions:

Observe the following figure and answer the following :



The exoskeleton of these animals is made up of which chemical?



**Watch Video Solution**

**155.** Diagram-based questions:

Observe the following figure and answer the following :



Give another two examples of this phylum.

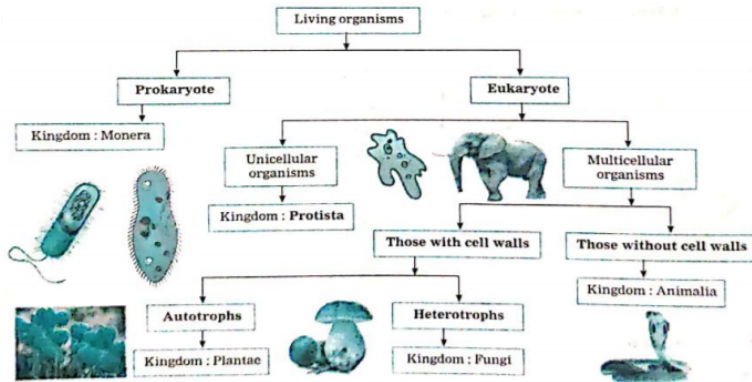


**Watch Video Solution**

**156.** Complete the following charts:

Complete the chart by taking into

consideration the criteria for classification:



Watch Video Solution