



# PHYSICS

## BOOKS - CHETANA PHYSICS (MARATHI ENGLISH)

### MODEL ACTIVITY SHEET 1

#### Exercise

1. The process by which nucleotide in the gene suddenly changes its position is called\_\_\_\_\_.

A. translation

B. translocation

C. mutation

D. transcription.

**Answer:**



**Watch Video Solution**

2. Carbon dating method measures the radio activity of C-14 and the ratio of \_\_\_\_\_ present in the organism's body.

A. C-12 to C-14

B. C-6 to C-7

C. C-14 to C-12

D. C-14 to O-16

**Answer:**



**Watch Video Solution**

**3.** The forest Conservation Act was enacted in

\_\_\_\_\_.

A. 1980

B. 1986

C. 1972

D. 1963

A. A. 1980

B. B. 1986

C. C. 1972

D. D. 1963

**Answer:**



**Watch Video Solution**

4. \_\_\_\_\_ is not a component of nuclear power plant.

A. control pods

B. gas turbine

C. steam turbine

D. condenser

A. A. control rods

B. B. gas turbine

C. C. steam turbine

D. D. condenser

**Answer:**



**Watch Video Solution**

5. Choose the correct alternative and write its alphabet against the sub - question number :

Vinegar is the chemically ..... acid.

A. Citric

B. Gluconic

C. Glutamic

D. Acetic

**Answer:**



**Watch Video Solution**

**6. Name the following.**

First record of human like animal in the form of ape from East Africa.



**Watch Video Solution**

**7. Name the following:**

Bacterial strains which convert milk to

Yoghurt.



[Watch Video Solution](#)

**8.** State whether the given statements are True or False. Correct the false statement.

Radiations of cell phones penetrate the bones of adults more effectively than the bones of children.



[Watch Video Solution](#)

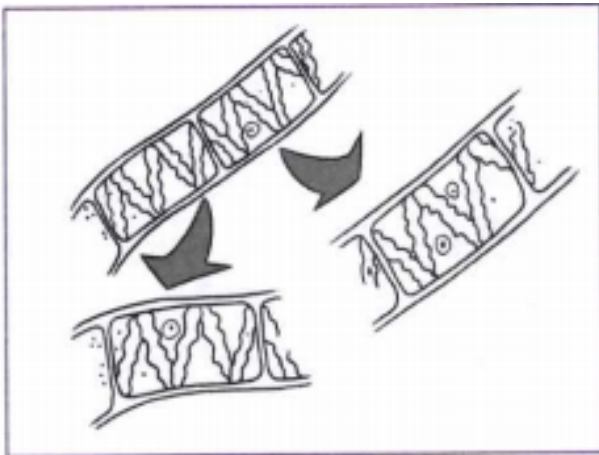


## 9. Forest conserved in the name of God



[Watch Video Solution](#)

10. What is the type of asexual reproduction shown in the diagram below?



[Watch Video Solution](#)

**11. Give scientific reasons:**

Oxygen is necessary for complete oxidation of glucose.



**Watch Video Solution**

**12. Give scientific reasons:**

Body temperature of reptiles is not constant.



**Watch Video Solution**

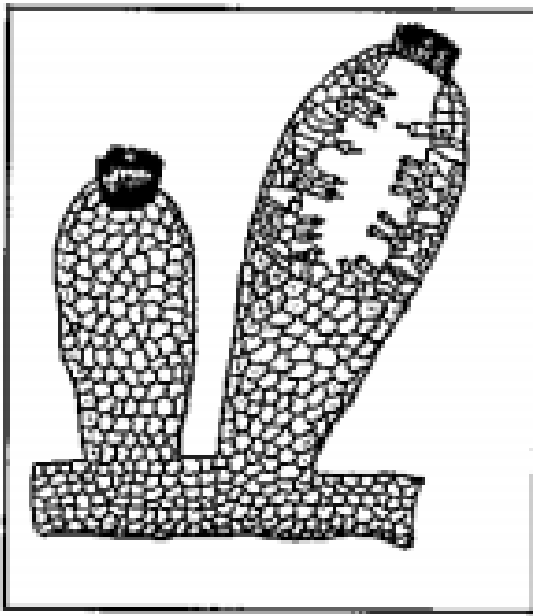
**13. Give Scientific Reasons :**

The constructions of turbine is different for different types of power plants.



**Watch Video Solution**

**14. Identify the phylum of the given animal and write any two characteristics of this phylum.**



[Watch Video Solution](#)

15. What do we learn from the story of Jadav Molai Peyang?

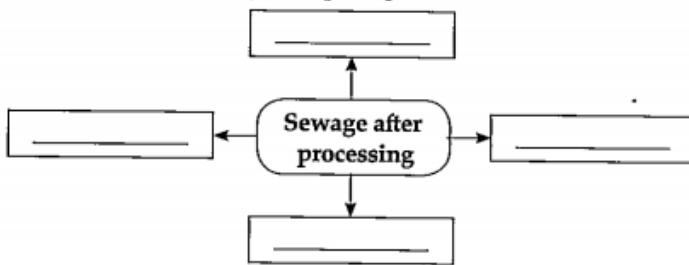


[Watch Video Solution](#)

16. Why some of the organs in human body are most valuable?

 [Watch Video Solution](#)

17. Complete the following concept map:

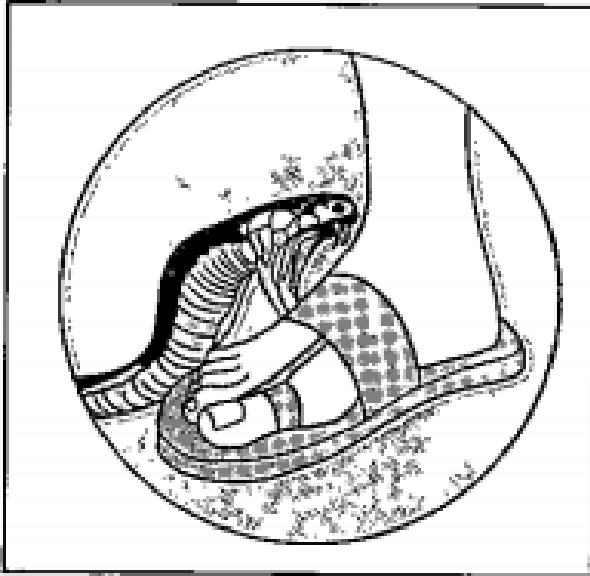


 [Watch Video Solution](#)

**18.** Following is the picture of a disasters.

What will be your post disaster management

in this case?



**Watch Video Solution**

**19.** Describe Darwin's theory of evolution.



**Watch Video Solution**

**20.** Which projects will you run in relation to environmental conservation? How?



**Watch Video Solution**

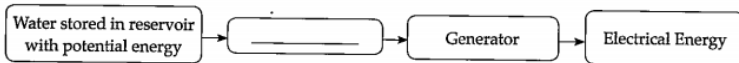
**21.** Explain how sewage is disposed in cities and villages?



**Watch Video Solution**

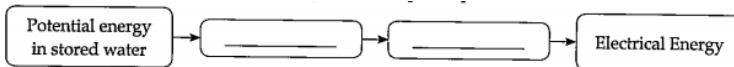
## 22. Fill in the blocks:

Stages of generation of Electrical energy from hydroelectric power station



[Watch Video Solution](#)

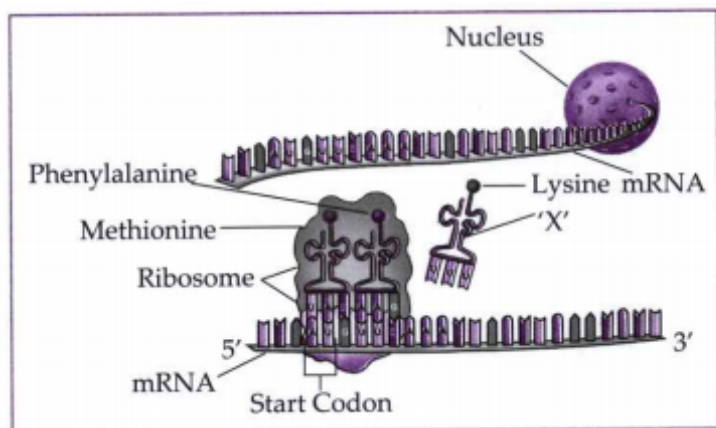
23. Step by step energy conversion in hydroelectric power plant.



[Watch Video Solution](#)



24. Observe the given diagram and answers the questions given below it.



Identify the molecule labelled as 'X' in the given diagram.

[Watch Video Solution](#)

**25.** Which substance forms the outer layer of their exoskeleton?



**Watch Video Solution**

**26.** What is DNA finger printing?



**Watch Video Solution**

**27.** Write the symptoms, effect and remedial measures for : Motor accident



**Watch Video Solution**

**28.** Give three examples of each:

Hobbies to reduce stress.



**Watch Video Solution**

**29.** Give three examples of each:

Diseases endangering the social health.



**Watch Video Solution**