



# PHYSICS

## BOOKS - CHETANA PHYSICS (MARATHI ENGLISH)

### MODEL ACTIVITY SHEET 2

#### Exercise

1. \_\_\_\_\_ is essential for growth of the body and also for restoration of emaciated body,

wound healing, formation of blood cells, etc.

A. Meiosis

B. Nutrition

C. Mitosis

D. Cytokinesis

**Answer:**



**Watch Video Solution**

2. Choose the correct alternative and write that alphabet against the sub-question number:

Vegetative propagation is performed with the help of.....in sweet potato.

- 1) root
- 2) stem
- 3) leaf
- 4) flower

A. eyes

B. roots

C. buds

D. climber

**Answer:**



**Watch Video Solution**

**3.** Different scientists classified the animals.

But \_\_\_\_\_ classified according to the criteria like body size, habits and habitats.

A. Theophrastus

B. Aristotle

C. Linnaeus

D. John Ray

**Answer:**



**Watch Video Solution**

4. Subphylum Vertebrata is further divided into \_\_\_\_\_ classes.

A. four

B. seven

C. five

D. six

**Answer:**



**Watch Video Solution**

5. Sycon, Hyalonia, Euplectella belong to Phylum \_\_\_\_\_.

A. Cnidaria

B. Annelida

C. Arthropoda

D. Porifera

**Answer:**



**Watch Video Solution**

**6.** Name the following: The title of the book Darwin published.



**Watch Video Solution**

7. Vitamins A,D,E,K : Fat-soluble : : Vitamins B and C : \_\_\_\_\_.



**Watch Video Solution**

8. Select the odd one out:

Prophase, Metaphase, Anaphase, Telophase



**Watch Video Solution**



**9.** In Meiosis,

Chromosome numbers leads to \_\_\_ Formation  
of \_\_\_\_\_ gamets.



**Watch Video Solution**

**10.** State whether the following statements  
True or False. Correc the false statements.

Geographical or reproductive isolation leads  
to speciation.



**Watch Video Solution**

## 11. Distinguish between

Conventional energy resources and Non-conventional energy resources.



[Watch Video Solution](#)

12. DNA fingerprinting is useful in forensic sciences and paternity testing.



[Watch Video Solution](#)

**13.** What are the main features of Industrial Microbiology?



**Watch Video Solution**

**14.** State the uses of stem cells.



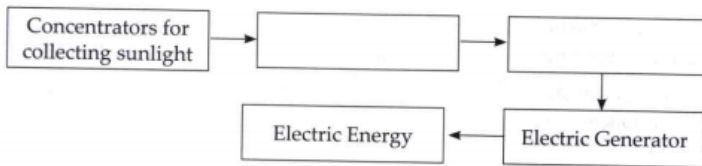
**Watch Video Solution**

**15.** Give examples of each (i) Hobbies to reduce stress. (ii) Physical problems arising due to excessive use of mobile phones.



Watch Video Solution

16. Give the different stages in solar thermal power plant.



Watch Video Solution

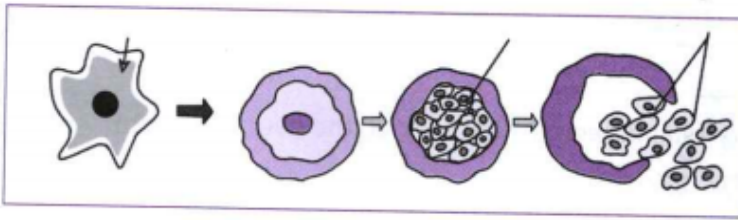
17. What is the meaning of "Jivo Jivasya Jivanam"?





Watch Video Solution

18. Observe the diagram and explain the formation of cyst in Amoeba during multiple fission.



Watch Video Solution

19. When does the cyst rupture?



 [Watch Video Solution](#)

20. How many amoebulae are released at one time?



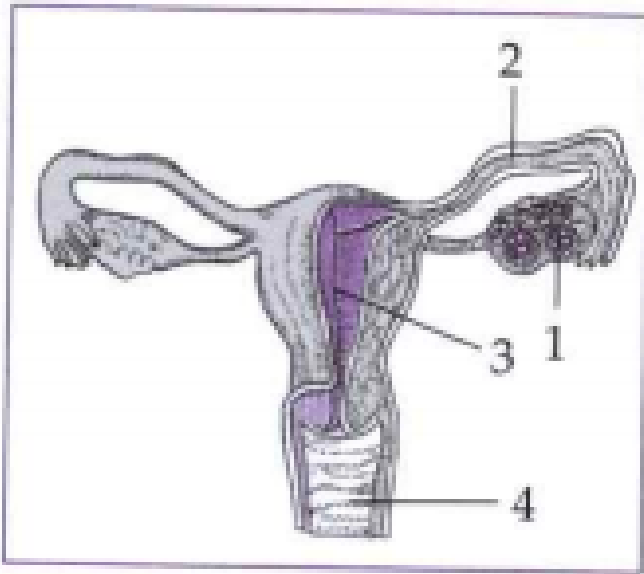
[Watch Video Solution](#)

21. Why is it termed as the 'Energy currency' of the cell?



[Watch Video Solution](#)

22. Observe the structure of Human reproductive system, and answer the following questions.



Name the organs (1,2,3 and 4).



**Watch Video Solution**

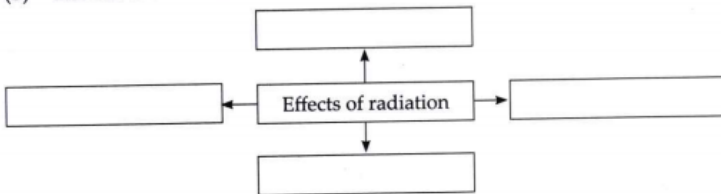
23. Answer the following question in detail:

What is radioactive pollution? What are its effects?



Watch Video Solution

24. List the effects of radiations.



Watch Video Solution



**25.** What will be the effect of industry established on river bank on the river ecosystem?



**Watch Video Solution**

**26.** Write the advantages and limitations of Nuclear energy:



**Watch Video Solution**

**27.** What is Green Revolution, Blue Revolution and White Revolutions?



**Watch Video Solution**

**28.** Write in brief about progressive changes in animal classification.



**Watch Video Solution**