



BIOLOGY

BOOKS - PREMIERS PUBLISHERS

**REPRODUCTION IN PLANTS AND
ANIMALS**

**Textbook Evaluation | Choose The Correct
Answer**

1. The plant which propagates with the help of its leaves is _____.

A. Onion

B. Neem

C. Ginger

D. bryophyllum

Answer: D



Watch Video Solution

2. Asexual reproduction takes place through budding in _____.

A. Amoeba

B. Yeast

C. Plasmodium

D. Bacteria

Answer: B



Watch Video Solution

3. Syngamy results in the formation of _____.

A. Zoospores

B. Conidia

C. Zygote

D. Chlamyospores

Answer: C



Watch Video Solution

4. The essential parts of a flower are _____.

A. Calyx and Corolla

B. Calyx and Androecium

C. Corolla and Gynoecium

D. Androecium and Gynoecium

Answer: D



Watch Video Solution

5. Anemophilous flowers have _____.

- A. Sessile stigma
- B. Small smooth stigma
- C. Colored flower
- D. Large feathery stigma

Answer: D



Watch Video Solution

6. Male gametes in anghiosperms are formed by the division of _____.

A. Generative cell

B. Vegetative cell

C. Microspore mother cell

D. Microspore

Answer: A



Watch Video Solution

7. What is true of gametes ?

A. They are diploid

B. They give rise to gonads

C. They produce hormones

D. They are formed from gonads

Answer: D



Watch Video Solution

8. A single highly coiled tube where sperms are stored , get concentrated and mature is known as _____.

A. Epididymis

B. Vasa efferentia

C. Vas deferens

D. Seminiferous tubules

Answer: A



Watch Video Solution

9. The large elongated cells that provide nutrition to developing sperms are _____.

A. Primary germ

B. cells

C. Sertoli cells

D. Leydig cells

Answer: A



Watch Video Solution

10. Estrogen is secreted by _____.

A. Anterior pituitary

B. Primary follicle

C. Graffian follicle

D. Corpus luteum

Answer: C



Watch Video Solution

11. Which one of the following is an IUCD ?

A. Copper-T

B. Oral pills

C. Diaphragm

D. Tubectomy

Answer: A



Watch Video Solution

Textbook Evaluation li Fill In The Blanks

1. The embryo sac in a typical dicot at the time of fertilization is _____.



Watch Video Solution

2. After fertilization , the ovary develops into _____.



Watch Video Solution

3. Planaria reproduces asexually asexully by

_____.



Watch Video Solution

4. Fertilization is _____ in humans.



Watch Video Solution

5. The implantation of the embryo occurs at about ____ day of fertillizatiion .



[Watch Video Solution](#)

6. _____ is the first secretion from the mammary gland after child birth .



[Watch Video Solution](#)

7. Prolactin is a hormone produced by _____.



[Watch Video Solution](#)

1. Match the Column:

	Column I		Column II
A	Fission	(i)	Spirogyra
B	Budding	(ii)	Amoeba
C	Fragmentation	(iii)	Yeast



Watch Video Solution

2. Match the following terms with their respective meanings

	Column I		Column II
A	A. Parturition	(i)	Duration between pregnancy and birth
B	B. Gestation	(ii)	Attachment of zygote to endometrium
C	C. Ovulation	(iii)	Delivery of baby from uterus
D	D. Implantation	(iv)	Release of egg from Graffian follicle



[Watch Video Solution](#)

Textbook Evaluation IV State Whether The Following Statements Are True Or False Correct The False Statement

1. Stalk of the ovule is called pedicel .



[Watch Video Solution](#)

2. Seeds are the product of asexual reproduction .



[Watch Video Solution](#)

3. Yeast reproduces asexually by means of multiple fission .



[Watch Video Solution](#)

4. The part of the pistil which serves as a receptive structure for the pollen is called as style.



[Watch Video Solution](#)

5. Insect pollinated flowers are characterized by dry and smooth pollen.



[Watch Video Solution](#)

6. Sex organs produce gametes which are diploid .



[Watch Video Solution](#)

7. LH is secreted by the posterior pituitary .



[Watch Video Solution](#)

8. Menstrual cycle ceases during pregnancy.

(True/False)



[Watch Video Solution](#)

9. Surgical methods of contraception prevent gamete formation .



[Watch Video Solution](#)

10. The increased level of estrogen and progesterone is responsible for menstruation .



[Watch Video Solution](#)

Textbook Evaluation V Answer In A Word Or Sentence

1. IF one pollen grain produces two male gametes how many pollen grains are needed to fertilize 10 Ovules?



[Watch Video Solution](#)

2. In which part of the flower germination of pollen grains takes place ?



[Watch Video Solution](#)

3. Name two organisms which reproduces through budding .



[Watch Video Solution](#)

4. Mention the function of endosperm.



[Watch Video Solution](#)

5. Name the hormone responsible for the vigorous contractions of the uterine muscles .



Watch Video Solution

6. What is the enzyme present in acrosome of sperm ?



Watch Video Solution

7. When is world Menstrual Hygiene Day observed ?



Watch Video Solution

8. What is the need for contraception ?



Watch Video Solution

9. Name the part of the human female reproductive system where the following

occurs .

Fertilization



[Watch Video Solution](#)

Textbook Evaluation Vi Short Answer Question

1. What will happen if you cut planaria into small fragments ?



[Watch Video Solution](#)

2. Why is vegetative propagation practiced for growing some type of plants?



Watch Video Solution

3. How does binary fission differ from multiple fission ?



Watch Video Solution

4. What is triple fusion ?



Watch Video Solution

5. Write the characteristics of insect pollinated flowers.



Watch Video Solution

6. Name the secondary sex organs in male



Watch Video Solution

7. What is colostrum? How is milk production hormonally regulated?



Watch Video Solution

8. How can menstrual hygiene be maintained during menstrual days?

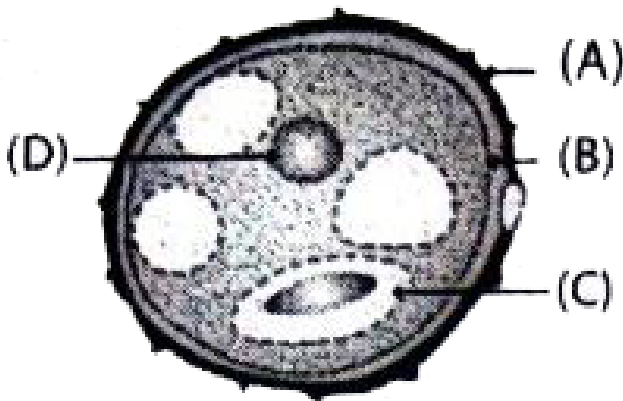


Watch Video Solution

9. How does developing embryo gets its nouroshment inside the mother 's body ?

 [Watch Video Solution](#)

10. Identify the parts A,B,C and D.



 [Watch Video Solution](#)

11. Write the events involved in the sexual reproduction of a flowering plant .

Discuss the first event and write the types .



Watch Video Solution

12. Why are the human testes located outside the abdominal cavity ? Name the pouch in which they are present .



Watch Video Solution

13. Luteal phase of the menstrual cycle is also called the secretory phase. Give reason.



Watch Video Solution

14. Why are family planning methods not adopted by all people of our country?



Watch Video Solution

1. With a neat labelled diagram describe the parts of a typical angiosperm ovule .



Watch Video Solution

2. What are the phases of menstrual cycle?
Indicate the changes in the ovary and uterus.



Watch Video Solution

1. In angiosperms, the pollen germinates to produce pollen tube that carries two gametes.

What is the purpose of carrying two gametes when single gamete can fertilize the egg?



[Watch Video Solution](#)

2. Why menstrual cycle does not take place before puberty and during pregnancy ?



[Watch Video Solution](#)

3. Read the following passage and answer the questions that follow

Rahini and her parents were watching a television programme . An advertisement flashed on the screen which was promoting use of sanitary napkins . Rahini's parents suddenly changed the channel , but she objected to her parents and explained the need and importance of such advertisement .

What is first menstruation called ? when does it occur?



Watch Video Solution

Other Important Questions Answers | Choose The Correct Answer

1. In a pollen grain the small nucleus is:

A. Generative nucleus

B. Tube nucleus

C. Vegetative nucleus

D. Pollen nucleus

Answer: A



Watch Video Solution

2. Raphe and hilum in seed represent:

A. Nucellus

B. Funiculus

C. Integument

D. Micropyle

Answer: B



Watch Video Solution

3. Spirogyra is an:

A. Virus

B. Fungi

C. Bacteria

D. Algae

Answer: D



Watch Video Solution

4. Pollination is followed by:

A. Seed formation

B. Fragmentation

C. Fertilization

D. Budding

Answer: C



Watch Video Solution

5. In wind pollinated flowers, the pollen grains are:

A. sticky and powdery

B. small and powdery

C. dry and powdery

D. wet and powdery

Answer: C



Watch Video Solution

6. Androecium is the Part of the flower.

A. upper

B. male

C. lower

D. female

Answer: B



Watch Video Solution

7. Zygote is a resulting product of:

A. Germination

B. Pollination

C. Fusion of Embryosac

D. Fertilization

Answer: D



Watch Video Solution

8. Pick out the correct statement:

A. Endosperm is a connective tissue

B. Endosperm is a muscular tissue

C. Endosperm is a nutritive tissue

D. Endosperm is a nervous tissue

Answer: C



Watch Video Solution

9. The follicle that ruptures at the time of ovulation promptly fills with blood, forming:

A. Corpus Luteum

B. Corpus albricans

C. Corpus Collosum

D. Corpus Haemorrhageim

Answer: A



Watch Video Solution

10. The endometrium is the lining of:

A. bladder

B. vagina

C. uterus

D. oviduct

Answer: C



Watch Video Solution

11. Menstrual flow occurs due to lack of

A. Progesterone

B. FSH

C. Oxytocin

D. Vasopressin

Answer: A



Watch Video Solution

12. Testosterone is secreted by:

A. Leydig cells

B. Sertoli cells

C. Seminiferous tubule

D. None of these

Answer: D



Watch Video Solution

13. In mammals, maturation of sperms take place at a temperature:

- A. Equal to that of body
- B. Higher than that of body
- C. Lower than that of body
- D. At any piece of mammalian sperm

Answer: C



Watch Video Solution

14. In menstrual cycle is 30 days and bleeding starts on 1st day, then ovulation occur on:

A. 14th day

B. 18th day

C. 30th day

D. 16th day

Answer: D



Watch Video Solution

15. The symbol of family planning in India is:

A. Square

B. Inverted red triangle

C. Rectangle

D. Circle

Answer: B



[Watch Video Solution](#)

Other Important Questions Answers li Fill In The Blanks

1. Purpose of tubectomy is to prevent



[Watch Video Solution](#)

2. Progesterone is secreted by



[Watch Video Solution](#)

3. Sertoli cells are found mg in



Watch Video Solution

4. Hormone responsible for ovulation and development of corpus luteum is



Watch Video Solution

5. First menstrual cycle starts is





[Watch Video Solution](#)

6. The functional maturation of sperms takes place in



[Watch Video Solution](#)

7. Seeds develops from



[Watch Video Solution](#)

8. In buds are produced in the notches along the leaf margin.



[View Text Solution](#)

9. Androecium is made up of



[Watch Video Solution](#)

10. Pollination by wind is called



[View Text Solution](#)

11. In Angiosperm pollen tube liberate their male gametes into the



[View Text Solution](#)

12. Double fertilization is essential for formation of



[View Text Solution](#)

13. During spore formation a structure called develops from the fungal hypha.



[View Text Solution](#)

Other Important Questions Answers Iii Match The Following

1. Match the Column I with Column II.

	Column I		Column II
A	Androecium	(i)	Female part of the flower
B	Gynoecium	(ii)	Fragmentation
C	Spirogyra	(iii)	Animals
D	Zoophily	(iv)	Seed
E	Ovule	(v)	Male part of the flower

 [View Text Solution](#)

2. Match the Column I with Column II

	Column I		Column II
A	A. Fertile period	(i)	Prevention of conception
B	B. Condoms	(ii)	Day 10 to 17 of Menstrual cycle
C	C. Census	(iii)	Sterilisation in the female
D	D. Vasectomy	(iv)	Official counting of human population
E	E. Tubectomy	(v)	Ligation of vas deferens

 [View Text Solution](#)

**Other Important Questions Answers Iv Assertion
And Reasoning**

1. Assertion (A): Some of the Angiospermic plants are propagated only by vegetative propagation.

Reason (R): They have lost the capacity of seed formation.

A. If both A and R are true and R is correct explanation of A

B. If both A and R are true but R is not the correct explanation of A

C. A is true but R is false

D. Both A and R are false

Answer: A



View Text Solution

2. Assertion (A): Double fertilization is the universal features of all plants.

Reason (R): In this fusion only male gametes and secondary nucleus takes place.

- A. If both A and R are true and R is correct explanation of A
- B. If both A and R are true but R is not the correct explanation of A
- C. A is true but R is false
- D. Both A and R are false

Answer: D



View Text Solution

3. Assertion (A): The unit of Androecium is called stamen.

Reason (R): The most important part of androecium is anther.

A. If both A and R are true and R is correct explanation of A

B. If both A and R are true but R is not the correct explanation of A

C. A is true but R is false

D. Both A and R are false

Answer: C



View Text Solution

4. Assertion (A): Anemophily includes wastage of pollen grains.

Reason (R): Anemophilous flowers are neither attractive nor fragrant.

A. If both A and R are true and R is correct explanation of A

B. If both A and R are true but R is not the correct explanation of A

C. A is true but R is false

D. Both A and R are false

Answer: B



View Text Solution

5. Assertion (A): Sexual reproduction takes place with the participation of two different type of gametes.

Reason (R): Sexual reproduction is also known as Apomixis.

A. If both A and R are true and R is correct explanation of A

B. If both A and R are true but R is not the correct explanation of A

C. A is true but R is false

D. Both A and R are false

Answer: C



View Text Solution

6. Assertion (A): In India, IUDS most widely accepted methods of contraception.

Reason (R): IUDS are injectable contraceptives, which prevent pregnancy for three months.

A. If both A and R are true and R is correct explanation of A

B. If both A and R are true but R is not the correct explanation of A

C. A is true but R is false

D. Both A and R are false

Answer: C



Watch Video Solution

7. Assertion (A): Over population has become a serious problem in developing countries.

Reason (R): It may exhaust natural resources, cause unemployment and lead to pollution.

- A. If both A and R are true and R is correct explanation of A
- B. If both A and R are true but R is not the correct explanation of A
- C. A is true but R is false
- D. Both A and R are false

Answer: A



Watch Video Solution

Other Important Questions Answers V State Whether True Or False If False Write The Correct Statement

1. Tubectomy a method of population control performed on males.



[View Text Solution](#)

2. Oral pills are very popular contraceptives among the rural women.



[Watch Video Solution](#)

3. The germ pore of dicot seed is known as micropyle.



Watch Video Solution

4. Vegetative reproduction is a kind of asexual reproduction.



Watch Video Solution

5. The protective wall of the pollen is intine.



[View Text Solution](#)

**Other Important Questions Answers Vi Answer In
Word Or Sentence**

1. What is reproduction?



[Watch Video Solution](#)

2. Fertilization



[Watch Video Solution](#)

3. Where the fertilization takes place in human female?



[View Text Solution](#)

4. Name two types of reproduction.



[View Text Solution](#)

5. What is menstruation ?



[Watch Video Solution](#)

6. Write the name of male and female reproductive part of a flower.



[View Text Solution](#)

7. Define gestation period.



[View Text Solution](#)

8. What is the gestation period in human?



[Watch Video Solution](#)

9. Write the full form of IUD and AIDS.



[View Text Solution](#)

10. What is menopause?



[Watch Video Solution](#)

11. Define pollination.



[Watch Video Solution](#)

12. Write a note on agents of pollination .



[Watch Video Solution](#)

13. What is Parturition?



[Watch Video Solution](#)

14. What is endometrium?



[View Text Solution](#)

15. What are gonads?



[View Text Solution](#)

16. Name two sexually transmitted disease.



[View Text Solution](#)

17. What is Vitelline membrane?



[View Text Solution](#)

18. Which parts of the flower transform into the seed and fruit?



[View Text Solution](#)

19. Name two sex hormones.



View Text Solution

20. What is umbilical cord?



View Text Solution

Other Important Questions Answers Vii Short Answer Question

1. What is the role of acrosome in human sperm?



Watch Video Solution

2. What happens when the egg is not fertilized?



Watch Video Solution

3. What could be the reasons for adopting contraceptive methods?



Watch Video Solution

4. How does reproduction help in providing stability to population of species?



Watch Video Solution

5. What is vegetative propagation? Give two suitable examples.



Watch Video Solution

6. What could be the reasons for adopting contraceptive methods?



Watch Video Solution

7. State in brief the function of the following organ. (a) Ovary

(b) Fallopian tube



[View Text Solution](#)

8. Surgical methods can be used to create a block in the reproductive system for contraceptive purpose. Name such parts where block are created in (i) Male

(i) Female





[Watch Video Solution](#)

Other Important Questions Answers Viii Long Answer Question

1. List out the different methods of contraceptive. Explain any two.



[Watch Video Solution](#)

2. Explain the structure of pollen grain with a labelled diagram.

 [Watch Video Solution](#)

3. Write the advantages and disadvantages of self and cross pollination.

 [Watch Video Solution](#)

4. Explain the structure of human sperm with diagram.

 [Watch Video Solution](#)

5. Explain the structure of ovum with diagram.



[Watch Video Solution](#)

Other Important Questions Answers | Give Reason

1. If a woman is using copper-T, will it help in protecting her from sexual transmitted diseases?



[Watch Video Solution](#)

2. Leaves of the Bryophyllum fallen on the ground produce new plants whereas the leaves of rose do not. Why?



[View Text Solution](#)

3. The organisms formed by asexual reproduction are considered as clones. Why?



[View Text Solution](#)

Other Important Questions Answers X Higher Order Thinking Skills Hots

1. Organism A needs water to multiply and organism B needs sugar solution to multiply. Identify the organism A and B and their method of Reproduction.



[View Text Solution](#)

2. If ovaries from a pregnant woman are removed in 4th month of pregnancy. What will

happen?



View Text Solution

3. A pregnant female not able to deliver the baby due to lack of 'X' hormones. Identify 'X' hormone. Write its function.



View Text Solution