



BIOLOGY

BOOKS - BEYOND PUBLICATION

REPRODUCTION- THE GENERATING SYSTEM

Example

1. Do you think reproduction occurs only for continuation of life ?



[Watch Video Solution](#)

2. What is the need of sexual reproduction ?



[Watch Video Solution](#)

3. How does an organism grow ? How does repair of worn out parts take place ? Is there any form of reproduction involved in the process ?



[Watch Video Solution](#)

4. Why do fish and frog produce a huge number of eggs each year ?



Watch Video Solution

5. Give examples and explain what is meant by external fertilisation.



Watch Video Solution

6. Write differences between

Grafting -Layering



Watch Video Solution

7. Write differences between

Stamen -Carpel

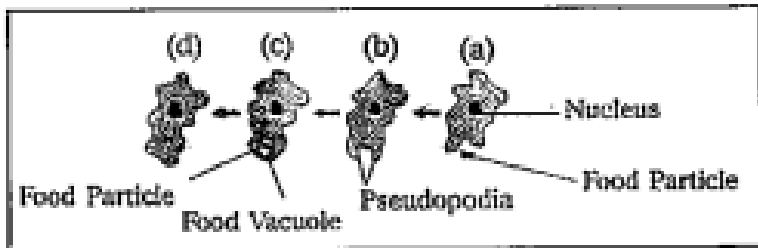


Watch Video Solution

8. Explain the process of fertilization in plants.

 [Watch Video Solution](#)

9. Describe the process of nutrition in Amoeba.



 [Watch Video Solution](#)

10. What are the advantages of propagating plants with the above methods ?

 [Watch Video Solution](#)

11. How does the progeny formed from asexual reproduction differ from those formed by sexual reproduction?



Watch Video Solution

12. How are sperms cells adapted for their function?



Watch Video Solution

13. The menstrual cycle prepares the uterus for a fertilised egg. How long is an average menstrual cycle from start to finish ?



Watch Video Solution

14. When the foetus is growing inside the uterus it needs nutrients. What provides these nutrients ?



Watch Video Solution

15. Which type of substances are absorbed by foetus from the mother ?



[Watch Video Solution](#)

16. What is the job of the amniotic sac ?



[Watch Video Solution](#)

17. What are the advantages of sexual reproduction ?



[Watch Video Solution](#)

18. How does reproduction help in providing stability to populations of species?



Watch Video Solution

19. List the main differences between mitosis and meiosis.



Watch Video Solution

20. What happens to the wall of the uterus during menstruation ?



[Watch Video Solution](#)

21. 'All unicellular organisms undergo only mitotic cell division during favourable conditions" - Do you support this statement ?
Why ?



[Watch Video Solution](#)

22. Vicky's father wants to grow a single plant having two desirable characters colourful flowers and big fruits. What method will you suggest him and why?



Watch Video Solution

23. How we will get the desired useful traits with the help of two selected traits by using grafting method ?



Watch Video Solution

24. Cut a transverse section of young stem of a plant from your school garden and observe it under the microscope. How would you ascertain whether it is a monocot stem or dicot stem? Give reasons.



Watch Video Solution

25. There are some families who follow some traditional practices in your village. Visit those families, collect information about their

cultural practices and festivals. Prepare a report on it and display in your wall magazine.



Watch Video Solution

26. Collect information related to feeling and hunger from your school library and prepare a note on it .



Watch Video Solution

27. In 'S' phase of the cell cycle



[Watch Video Solution](#)

28. Draw a labelled diagram of sperm.



[Watch Video Solution](#)

29. Identify ploidy of following parts of a flowering plant respectively Ovary, Anther, Eqq, Pollen, Male gamete, Zygote



[Watch Video Solution](#)

30. Prepare a flow to explain the process of sexual reproduction in plants.



Watch Video Solution

31. The intine of a pollen grain is mainly made up of



Watch Video Solution

32. What would be the consequences if there is no meiosis in organisms that reproduce sexually?



Watch Video Solution

33. What happens if meiosis does not take place in reproductive cells?



Watch Video Solution

34. Cell is the basic unit of life. Discuss in brief.



Watch Video Solution

35. What precautions will you take to away from various sexually transmitted discases?



Watch Video Solution

36. Write slogans on 'child marriages - a social evil' .



[Watch Video Solution](#)

37. Do you think reproduction occurs only for continuation of life ?



[Watch Video Solution](#)

38. How does an organism grow ? How does repair of worn out parts take place ? Is there any form of reproduction involved in the process ?





[Watch Video Solution](#)

39. How do you think bacteria were dividing to form curd?



[Watch Video Solution](#)

40. How do you think this (parthenogenesis) happens?



[Watch Video Solution](#)

41. Would it involve two parents?



Watch Video Solution

42. Is regeneration can also be known as a type of fragmentation? Do you agree ? Why or why not?



Watch Video Solution

43. Which type of fission would produce larger colonies in less period of time . Why?



[Watch Video Solution](#)

44. Which mode of asexual reproduction provides maximum scope of choice of desirable characters?



[Watch Video Solution](#)

45. Think of your own family, what similarities do you share with your father and mother? Draw a table to represent the similarities of

some characters like colour of eye (cornea), colour of hair, shape of nose, shape of face, type of earlobe (attached or free) inner thumb markings, etc. Write your characters in one column and that of your parents in the other columns.

(Q) . is there any character that is not present in grandma but present in your mother and you ?



Watch Video Solution

46. What mode of propagation would help you to produce the plants with desirable characters?



Watch Video Solution

47. Whether they reproduce by budding, fission or fragmentation ? Organisms formed are the exact copies of their parents. Is it true? Why?



Watch Video Solution

48. Do you find any similarities between rhizopus and fern spores and sporangia?



Watch Video Solution

49. What function do you think is served by petals and sepals?



Watch Video Solution

50. Draw the diagram of the flower that you collect and parts shown and write their functions.



Watch Video Solution

51. How does the male reproductive cells reach the female reproductive cells in flowers of such plants (pea plants)?



Watch Video Solution

52. How many nuclei are present in the pollen grain?



[Watch Video Solution](#)

53. Which floral part may be seen in a fruit?



[Watch Video Solution](#)

54. How are cotyledons useful for the plant?



[Watch Video Solution](#)

55. How would it affect the progeny formed by sexual reoroduction ?



Watch Video Solution

56. Why did the government of india fix the marriage age of boys (21 years) and girls (18 years)?



Watch Video Solution

57. Do you feel that it is a social responsibilities to control birth after having one or two children?



[Watch Video Solution](#)

58. What do you understand by the 'Healthy Society' ?



[Watch Video Solution](#)

59. Will you encourage child marriage?



[Watch Video Solution](#)

60. List the main differences between mitosis and meiosis.



[Watch Video Solution](#)

61. What would happen if the gametes do not have half the chromosome number as the skin parent?



[Watch Video Solution](#)

62. How would it affect the progeny formed by sexual reproduction ?



Watch Video Solution

63. What is the virus that causes AIDS ?



Watch Video Solution

64. Social discrimination against AIDS patient is also a social evil . Can you support this Why?



Watch Video Solution

65. Why doctors are prohibited to do sex determination through ultrasound scanning for pregnant women ?



Watch Video Solution

66. During replication of a bacterial chromosomes, DNA synthesis starts from a replication origin site and



Watch Video Solution

67. Deficiency by examining a specimen of blood under microscope. Suppose a small fixed volume contains on an average 20 red cells for normal persons. Using the Poission distribution, find the probability that a

specimen of blood taken from a normal person will contain less than 15 red cells.



[Watch Video Solution](#)

68. Pollen grain is



[Watch Video Solution](#)

69. How do you conduct an exothermic reaction in your lab ?



[Watch Video Solution](#)

70. Describe the structure of mitochondria with the help of a diagram.



Watch Video Solution

71. Why is reproduction essential for organisms?



Watch Video Solution

72. What is the major difference between sexual reproduction and vegetative reproduction in plants ?



Watch Video Solution

73. Which of the following shows budding?



Watch Video Solution

74. The most common type of asexual spores seen in algae are



Watch Video Solution

75. Give some examples of plants that are propagates by stem cutting?



Watch Video Solution

76. Who stated that binary fission of cells was the means of reproduction of animals cells?



Watch Video Solution

77. What is scion?



Watch Video Solution

78. What is root stock?



Watch Video Solution

79. What are layers?



Watch Video Solution

80. The type of vegetative propagation seen in Chrysanthemum is _____



Watch Video Solution

81. Where do you observe epiphyllous buds?



[Watch Video Solution](#)

82. What is grafting?



[Watch Video Solution](#)

83. What is vegetative propagation? Give two suitable examples.



[Watch Video Solution](#)

84. What is self pollination ?



Watch Video Solution

85. Define fertilization.



Watch Video Solution

86. Give examples and explain what is meant by external fertilisation.



Watch Video Solution

87. What is foetus ?



Watch Video Solution

88. What is gestation period ?



Watch Video Solution

89. What is ovulation ? How it occurs ?



Watch Video Solution

90. The technique of obtaining large number of plants through tissue culture is



Watch Video Solution

91. Name the process in which thousands of plants can be grown in very short interval of time.



Watch Video Solution

92. What is called sporophyll?



Watch Video Solution

93. What does the mother's blood take away from the baby and into the placenta ?



Watch Video Solution

94. What is amnion?



Watch Video Solution

95. Which one of the following is not the function of placenta ? It



Watch Video Solution

96. What is amnion?



Watch Video Solution

97. What is umbilical cord? How does it form?





[Watch Video Solution](#)

98. In gymnosperms, the endosperm is :



[Watch Video Solution](#)

99. What is double fertilisation ?



[Watch Video Solution](#)

100. Write about the structure of embryo sac.





[Watch Video Solution](#)

101. Who coined the name "Mitosis"?



[Watch Video Solution](#)

102. What is called germination?



[Watch Video Solution](#)

103. The scope of cell theory was extended by





[Watch Video Solution](#)

104. Who discovered that chromosomes appear double in nature ?



[Watch Video Solution](#)

105. Who stated that binary fission of cells was the means of reproduction of animals cells?



[Watch Video Solution](#)

106. Name the different phases of cell division.



Watch Video Solution

107. What are the different stages present in mitosis ?



Watch Video Solution

108. Which is the structural and functional unit of life of organism?



Watch Video Solution

109. Which of the following is not a sexually transmitted disease?



Watch Video Solution

110. How does AIDS spread from one person to another ?



Watch Video Solution

111. What is the virus that causes AIDS ?



Watch Video Solution

112. Which state has the number of HIV positive patients in our country?



Watch Video Solution

113. Why do the government establish ART centers?



[Watch Video Solution](#)

114. What is the function of ASHA and Red Ribbon Express?



[Watch Video Solution](#)

115. What is the virus that causes AIDS ?



[Watch Video Solution](#)

116. ART means.



Watch Video Solution

117. Name the type of organs which remain under developed and unusde in present day organisms.



Watch Video Solution

118. Spermicides means.



[Watch Video Solution](#)

119. What is called Vasectomy?



[Watch Video Solution](#)

120. Findout the correct statements regarding contraception.

1) Pills have to be taken daily for a period of 21 days II) “Saheli” is a "once-a-week” pill with very few side effects and high contraceptive value

III) Sterilisation procedure in the male is called tubectomy. IV) Lippes loop is a hormone releasing IUD



[Watch Video Solution](#)

121. All sexually transmitted diseases are completely curable.



[Watch Video Solution](#)

122. Expand A.S.H.A.



Watch Video Solution

123. What is called Contraception?



Watch Video Solution

124. Why teenage mother hood is dangerous for the girls?



Watch Video Solution

125. Why doctors are prohibited to do sex determination through ultrasound scanning for pregnant women ?



Watch Video Solution

126. What is Cytokinesis. ?



Watch Video Solution

127. Write some slogans against female foeticide.



Watch Video Solution

128. Draw a labelled diagram of sperm.



Watch Video Solution

129. How are cotyledons useful for the plant?



Watch Video Solution

130. In what way does mitotic division help the living organism ?



Watch Video Solution

131. Wine yeast is



Watch Video Solution

132. Which of the following does not show regeneration?



Watch Video Solution

133. Collect the information about respiratory rates in different ages in man.



Watch Video Solution

134. Read the following lines, find the error and rewrite it.

Majority of flowering plants have an embryosac consisting of eight cells and nine nuclei.



Watch Video Solution

135. What is the function of ASHA and Red Ribbon Express?



Watch Video Solution

136. How does the single celled organism reproduce in both favourable and unfavourable conditions?



Watch Video Solution

137. How swarms of insects suddenly appear in rainy season?



Watch Video Solution

138. What is the process of reproduction in Rhizopus ?



Watch Video Solution

139. What are sporangia?Where are they located?What do they contain?



Watch Video Solution

140. Why external fertilization occur in fishes and amphibians ?



Watch Video Solution

141. Write the speciality of epididymis.



Watch Video Solution

142. Male reproductive system secretes a fluid called semen . What is its use ?



Watch Video Solution

143. Graffian follicles are present in



Watch Video Solution

144. What happens during fertilization in human after many sperms reach close to the ovum ?



Watch Video Solution

145. What are the changes that occur in uterus while embryo is developing?



Watch Video Solution

146. How does implantation occur ?



Watch Video Solution

147. How does chorion develop?What are its functions?



[Watch Video Solution](#)

148. How can you say that placenta supplies nutrition to embryo?



[Watch Video Solution](#)

149. Define the following

Unisexual flowers



[Watch Video Solution](#)

150. Define the following

Bisexual flowers



Watch Video Solution

151. Write about the structure of embryo sac.



Watch Video Solution

152. Write a brief note about observations of scientists on chromosomes.





[Watch Video Solution](#)

153. Name the scientist with help of the following paragraph.

He hypothesised that in successive cell division the number of chromosomes always remain constant. He hypothesised meiosis.



[Watch Video Solution](#)

154. What happens during cell division?



[Watch Video Solution](#)

155. Why meiosis is called reduction division?



Watch Video Solution

156. A bacterial cell divides once every minute and it takes 1 hour to fill a cup. How much time will it take to fill half the cup?



Watch Video Solution

157. Suppose the tails of sperms are detached in an experiment. Will those sperms participate in fertilization? Explain.



Watch Video Solution

158. What questions you will ask about fusion in lower organisms?



Watch Video Solution

159. Floral buds store food help in vegetative propagation in



Watch Video Solution

160. A person is injured while playing on the ground. Blood is flowing continuously. What might be the reasons?



Watch Video Solution

161. Can you describe what happens when milk is converted into curd or yoghurt from your understanding of proteins?



Watch Video Solution

162. Pavithra went to fruit market. she was astonished by seeing the seedless fruits of watermelon, banana and grapes. How these seeds are developed or produced ?



Watch Video Solution

163. Microspores of the following plants are also called as pollen grains



Watch Video Solution

164. What are the sexual parts in the flower ?



Watch Video Solution

165. Write two precautions you take , while observing Rhizopus in the laboratory.



Watch Video Solution

166. Read the given paragraph and answer the questions given below.

In cases where male cells of flower of a plant fertilise the other female flower on the same or different plant of the same group, this type of pollination is called cross pollination.

What type of pollination occurs in bisexual flowers?



[Watch Video Solution](#)

167. Read the given paragraph and answer the questions given below.

In cases where male cells of a flower of a plant fertilise the other female flower on the same or different plant of the same group, this type of pollination is called cross pollination.

What type of pollination occurs in bisexual flowers?



[Watch Video Solution](#)

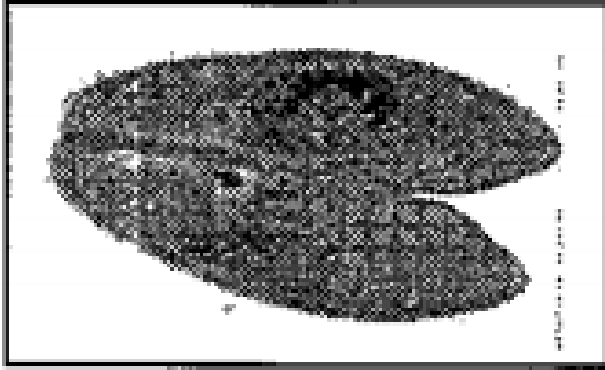
168. In which plant te vegetative propagation occurs through leaves ?



[Watch Video Solution](#)

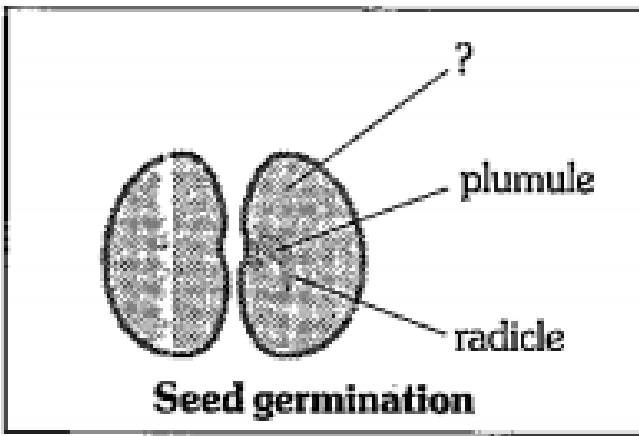
169. Observe the below picture.How does the organism which is shown in the picture

reproduce?



[Watch Video Solution](#)

170. Name the part to be labelled in the place of
of?



[▶ Watch Video Solution](#)

171. Why is reproduction essential for organisms?

[▶ Watch Video Solution](#)

172. How do condoms help along with contraception?



Watch Video Solution

173. What is parthenogenesis ? Give example.



Watch Video Solution

174. How is tissue culture more beneficial than other traditional methods for artificial

propagation of plants ?



Watch Video Solution

175. Write a short note on endosperm.



Watch Video Solution

176. In S-Phase of the cell cycle



Watch Video Solution

177. What are the factors that contribute to the spread of HIV in the state?



Watch Video Solution

178. What precautions will you take to away from various sexually transmitted discases?



Watch Video Solution

179. Which type of substances are absorbed by foetus from the mother ?



[Watch Video Solution](#)

180. Write slogans on 'child marriages - a social evil' .



[Watch Video Solution](#)

181. Write 5 slogans on the prevention of HIV/ AIDS .



[Watch Video Solution](#)

182. In Meiosis , the chromosome number in the daughter cells are reduced to half that of their parent cells . Guess, what would happen , if the reduction of chromosome number is not done.



Watch Video Solution

183. What are the questions you asked the doctor who visited your school to know "the ways of transmission of HIV" ?



Watch Video Solution

184. Draw a near labelled diagram of L.S. of flower .



Watch Video Solution

185. Ramu said that it is very essential to create more awareness in Andhra Pradesh and Telangana on the risk of HIV infection and AIDS . Do you believe support him ? If so, How can you support his statement ?



[Watch Video Solution](#)

186. There are various types of reproduction. The type of reproduction adopted by an organisms depends on



[Watch Video Solution](#)

187. How will you appreciate the contribution of August Weiseman to the cell biology?



[Watch Video Solution](#)

188. If the tail is cut in the lizard ,it develops again.Give the raeason.



Watch Video Solution

189. What are the different stages present in mitosis ?



Watch Video Solution

190. What is the gestation period in human beings ?



Watch Video Solution

191. Describe the types of vegetative propagation.



Watch Video Solution

192. What are artificial seeds or synthetic seeds?



Watch Video Solution

193. How does endosperm of embryo help in development of seed? Give an example.



Watch Video Solution

194. How would you pose questions to clarify your doubts on "Cell division - Importance-Growth of organism".



Watch Video Solution

195. Which type of questionnaire would you prepare to ask a doctor who is conducting family planning medical camp?



Watch Video Solution

196. Write the observation you made by examining the fern leaf. Are they resembled spores of rhizopus?



Watch Video Solution

197. Tilak left a piece of bread on the table. Next day it becomes black. The reason 1) fungal growth appears 2) Rhizopus appears on the bread 3) Bacterial growth appears 4) Virus affects the bread



Watch Video Solution

198. What are the advantages of vegetative propagation ?



Watch Video Solution

199. Write the information you got from your teacher about role of different parts in development of embryo.

Chorion,placenta,amnion,alantois are the

embryonic membranes. Write their functions in a tabular form.



[Watch Video Solution](#)

200. Draw a neat labeled diagram showing different stages of mitosis.



[Watch Video Solution](#)

201. Draw the labelled diagram of Embryo-sac.



[Watch Video Solution](#)

202. Draw a labelled diagram of female reproductive system.



Watch Video Solution

203. What is the loss caused due to teenage motherhood?



Watch Video Solution

204. Female foeticide is a social evil. How can you support this?



Watch Video Solution

205. What programmes you are going to conduct to create awareness among farmer in your locality on waste land development ?



Watch Video Solution

206. Describe what life skills one should develop in Adolescent stage.



Watch Video Solution

207. What are the methods of artificial propagation ?



Watch Video Solution

208. What are the advantages of vegetative propagation ?



Watch Video Solution

209. Explain the formation of fruits and seeds in plants.



Watch Video Solution

210. Write a short note on fission. Give examples.



Watch Video Solution

211. Write few points about cutting. Give examples.



Watch Video Solution

212. Write about layering. Give example.



[Watch Video Solution](#)

213. Write about grafting .Give some examples.



[Watch Video Solution](#)

214. Write a short note on the propagation of Rhizopus.



[Watch Video Solution](#)

215. How does the spore formation take place?



Watch Video Solution

216. Write about external and internal fertilization. How they differ from each other?



Watch Video Solution

217. Which part of the male reproductive system produces (human) the sperm cell?



[Watch Video Solution](#)

218. Which of the following is not a part of the female reproductive system in human beings?



[Watch Video Solution](#)

219. How does the uterus adopted beautifully at the time of fertilization?



[Watch Video Solution](#)

220. Write about the structure of embryo sac.



Watch Video Solution

221. Which disease occurs in child when there is an immediate second pregnancy or repeated child births in a mother ?



Watch Video Solution

222. Write about the reproductive parts of a flower. How many types of flowers are there? Give examples.



Watch Video Solution

223. Observe the diagram and answer the following questions.

(I) Name male and female reproductive parts of the above figure.





[Watch Video Solution](#)

224. Write a short note on structure of the ovule.



[Watch Video Solution](#)

225. Do you think reproduction occurs only for continuation of life ?



[Watch Video Solution](#)

226. How does cell division help in the formation of unicellular and highly evolved multicellular organisms like human being?



Watch Video Solution

227. Name the different phases of cell division.



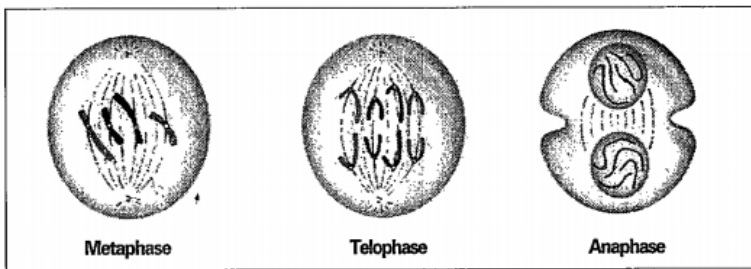
Watch Video Solution

228. Write a short note on prophase.



Watch Video Solution

229. What are the changes that occur in Metaphase, Anaphase and Telophase of the mitosis cell division?



[Watch Video Solution](#)

230. Write about different types of contraceptive devices. How they are useful in

the prevention of pregnancy?



Watch Video Solution

231. Draw the neatly diagram of meiosis.



Watch Video Solution

232. Draw the neat labelled diagram showing the birth of a child before delivery.



Watch Video Solution

233. Draw the neat diagram showing artificial vegetative propagation.



Watch Video Solution

234. Among the following organisms can we see asexual reproduction . Write about the method of asexual reproduction in any of the two organisms.

(a) Paramecium (b) Yeast (c) Spirogyra (d) Amoeba (e) Planaria





[Watch Video Solution](#)

235. Among the following organisms can we see asexual reproduction . Write about the method of asexual reproduction in any of the two organisms.

(a) Paramecium (b) Yeast (c) Spirogyra (d) Amoeba (e) Planaria



[Watch Video Solution](#)

236. Among the following organisms can we see asexual reproduction . Write about the method of asexual reproduction in any of the two organisms.

(a) Paramecium (b) Yeast (c) Spirogyra (d) Amoeba (e) Planaria



Watch Video Solution

237. Among the following organisms can we see asexual reproduction . Write about the

method of asexual reproduction in any of the two organisms.

(a) Paramecium (b) Yeast (c) Spirogyra (d) Amoeba (e) Planaria



[Watch Video Solution](#)

238. Among the following organisms can we see asexual reproduction . Write about the method of asexual reproduction in any of the two organisms.

(a) Paramecium (b) Yeast (c) Spirogyra (d)

Amoeba (e) Planaria



[Watch Video Solution](#)

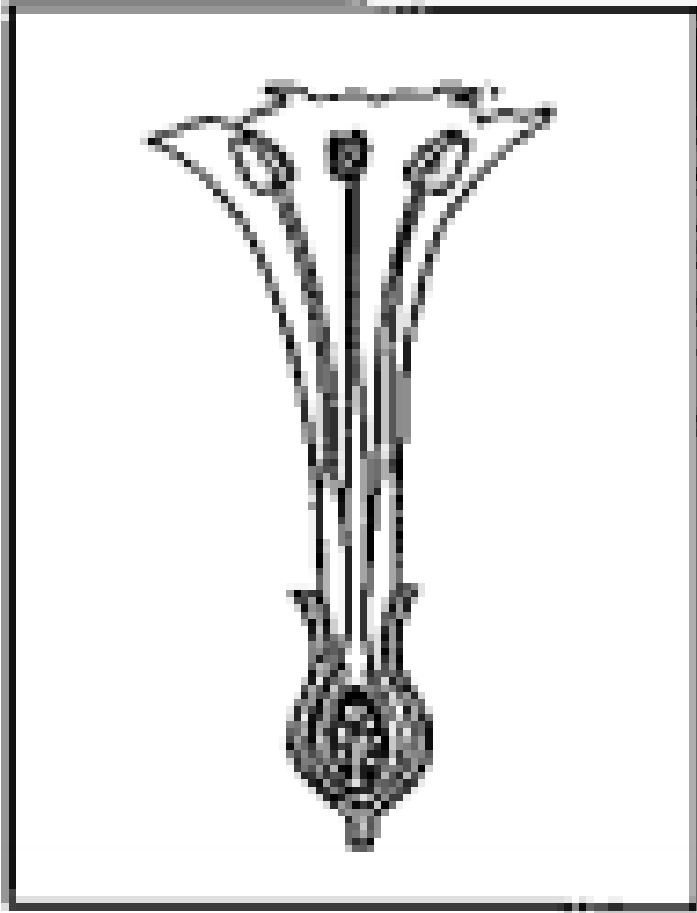
239. What are the different stages present in mitosis ?



[Watch Video Solution](#)

240. See the adjacent picture. Which type of pollination will occur in this? Why do you think

so?



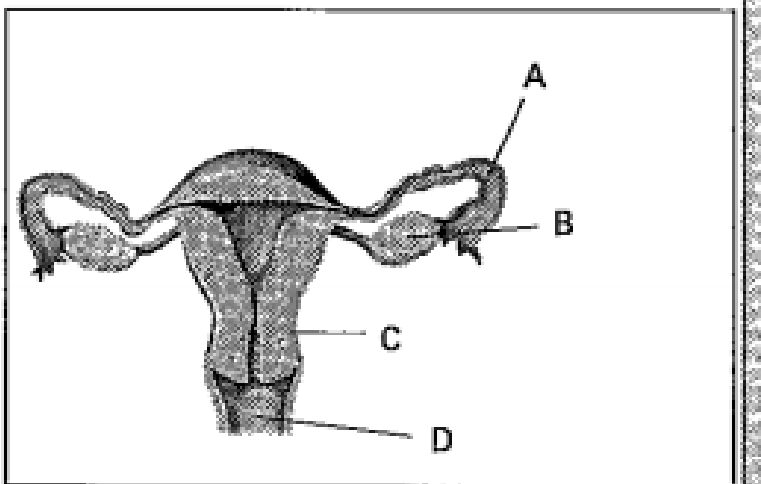
Watch Video Solution

241. Describe different artificial vegetative methods to produce large scale production plants.



Watch Video Solution

242.

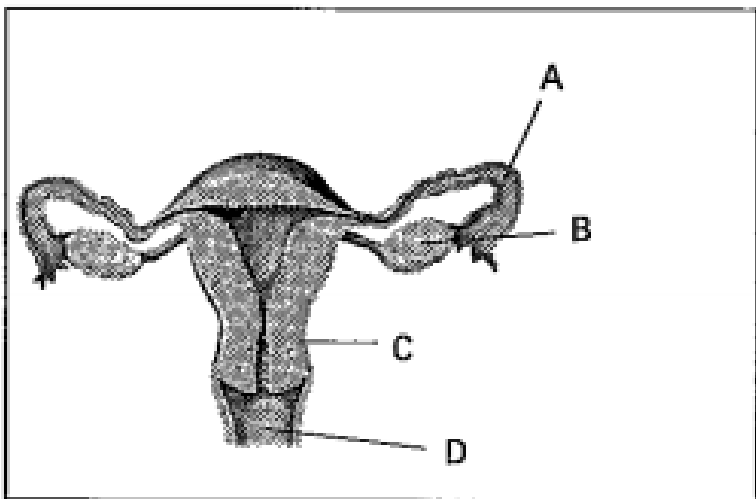


Label parts of A,B,C,D above drawn Human female reproductive system.



[Watch Video Solution](#)

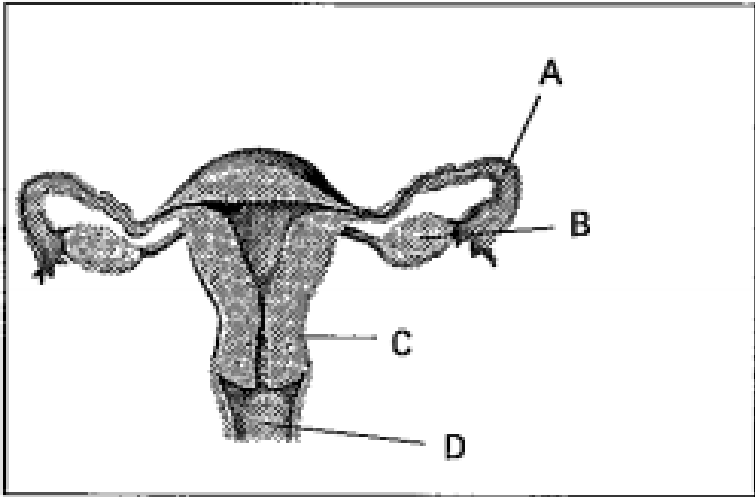
243.



In which part fertilization takes place?



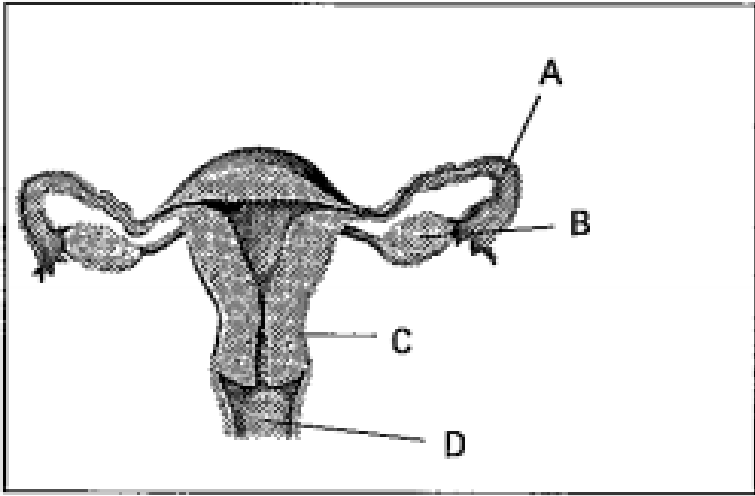
244.



Which part is in connection with implantation ?



245.



What is ovulation?

 [Watch Video Solution](#)

246. Explain the formation of fruits and seeds in plants.



Watch Video Solution

247. What are the consequences if meiosis not happen in the body cells of the organism. ?



Watch Video Solution

248. Analyze the following information and answer the following questions.

S.No.	Name of the plant	Method of propagation
1	Mango	Grafting
2	Rose, Hibiscus	Cutting
3	Jasmine	Layering
4	Bryophyllum	Small plants grow on edges of leaves
5	Colacasia	Corms
6	Onions	Bulbs

What do you call the given reproduction methods?



[Watch Video Solution](#)

249. What is the major difference between sexual reproduction and vegetative reproduction in plants ?



[Watch Video Solution](#)

250. Potato plants do not produce seeds. How can you propagation this plant ?



Watch Video Solution

251. Analyze the following information and answer the following questions.

S.No.	Name of the plant	Method of propagation
1	Mango	Grafting
2	Rose, Hibiscus	Cutting
3	Jasmine	Layering
4	Bryophyllum	Small plants grow on edges of leaves
5	Colacasia	Corms
6	Onions	Bulbs

What are the advantages of propagating plants with the above given methods?



[Watch Video Solution](#)

252. Draw the life history of flowering plant in the form of block diagram.



[Watch Video Solution](#)

253. What programmes you would like to conduct to explain the relationship between

cleanliness and health?



Watch Video Solution

254. Describe what life skills one should develop in Adolescent stage.



Watch Video Solution

255. Government made an act on determining sex through ultrasound scanning and telling it as crime . What do you do to tell this others ?



[Watch Video Solution](#)

256. What are the questions you asked the doctor who visited your school to know "the ways of transmission of HIV" ?



[Watch Video Solution](#)

257. Ravi's father wants to cultivate potato in his field . He wants to clarify some doubts with

the agricultural officer. Prepare a list of doubts in form of questions for him .



Watch Video Solution

258. In 'S' phase of the cell cycle



Watch Video Solution

259. Who used cells fusion technique to understand the functional relationship between different phases of interphase ?



Watch Video Solution

260. Read the following information and answer the given questions.

To understand the functional relationship between these phases of cell cycle Dr.N.Rao and his research associate Dr.Johnson conducted experiments on cell fusion technique.His researches revealed that the cell cycle is sequential ,unidirectional had controlled by a series of chemical signals.His experiments are considered to be a milestone

in the cell cycle studies. This study threw a new hope of ray for the budding scientists to carry out reseraches on cell division. G_1 : 3.5 hrs, M : 1 hr are the stages in a cell cycle which occur in a manner with specific time.

G_1 , S , G_2 stages are collectively called.....?



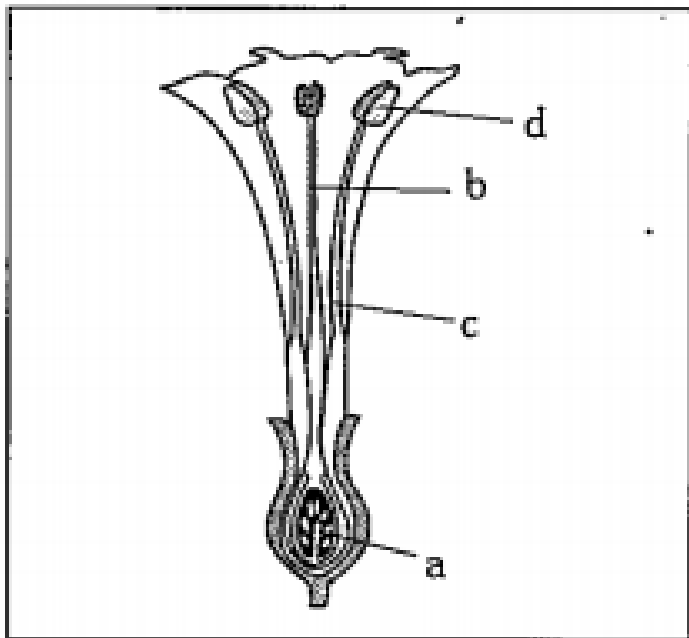
[Watch Video Solution](#)

261. M phase of cell cycle starts with



[Watch Video Solution](#)

262. Identify the flower parts a,b,c,d and write their main function.



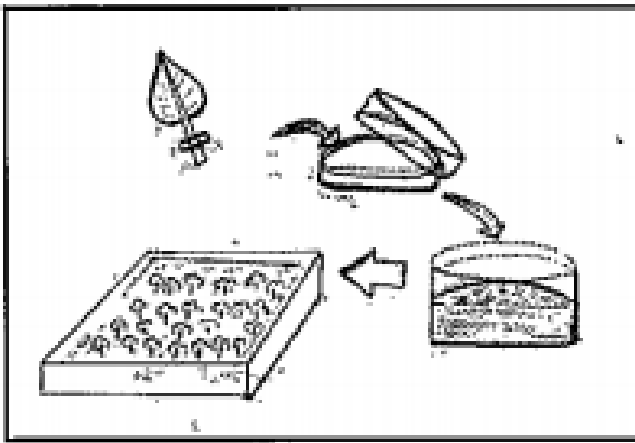
Watch Video Solution

263. Describe the developmental stages of human embryo after fertilization with the help of neatly labelled diagrams.



Watch Video Solution

264. Observe the diagram and answer the following

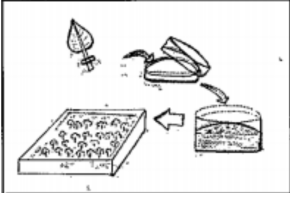


What is the process takes place in above diagram?



[Watch Video Solution](#)

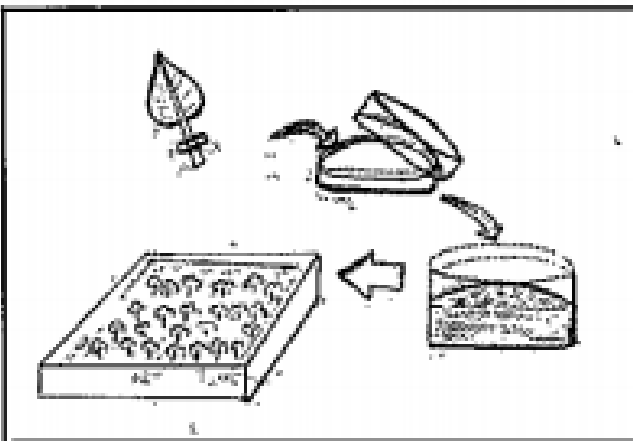
265. Observe the diagram and answer the following



Who identified the above method?

 [Watch Video Solution](#)

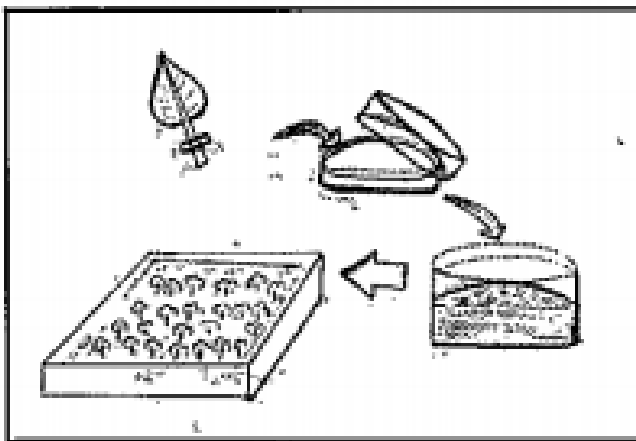
266. Observe the diagram and answer the following



How this process helpful in plant propogation?

 [Watch Video Solution](#)

267. Observe the diagram and answer the following

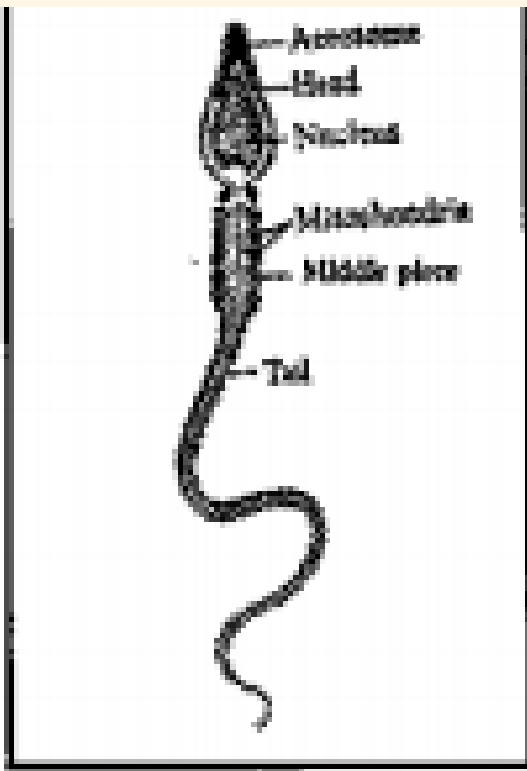


In which plants we practice this type of technique?



Watch Video Solution

268. Observe the diagram and answer the following.

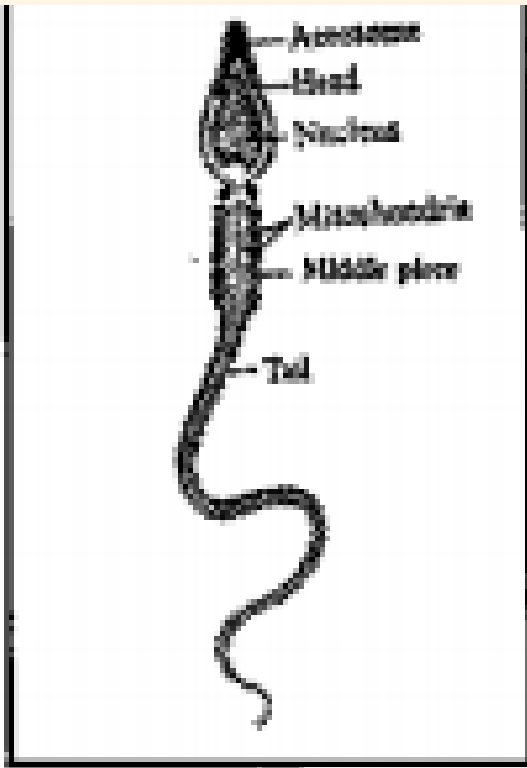


What is the function of Acrosome?



Watch Video Solution

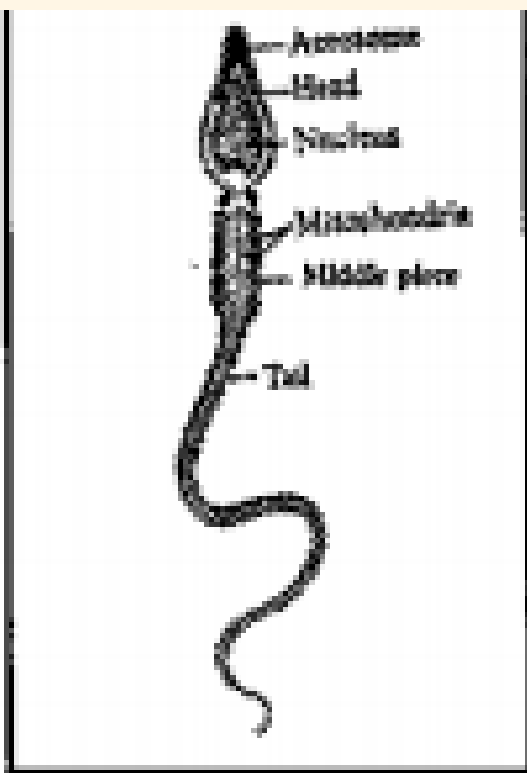
269. Observe the diagram and answer the following.



How energy is supplied for the movement of sperm?



270. Observe the diagram and answer the following.

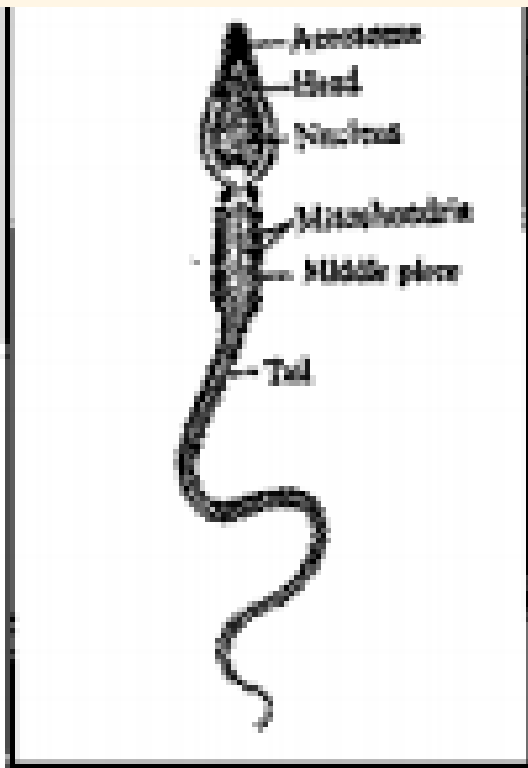


At what age these sperms are produced?



Watch Video Solution

271. Observe the diagram and answer the following.

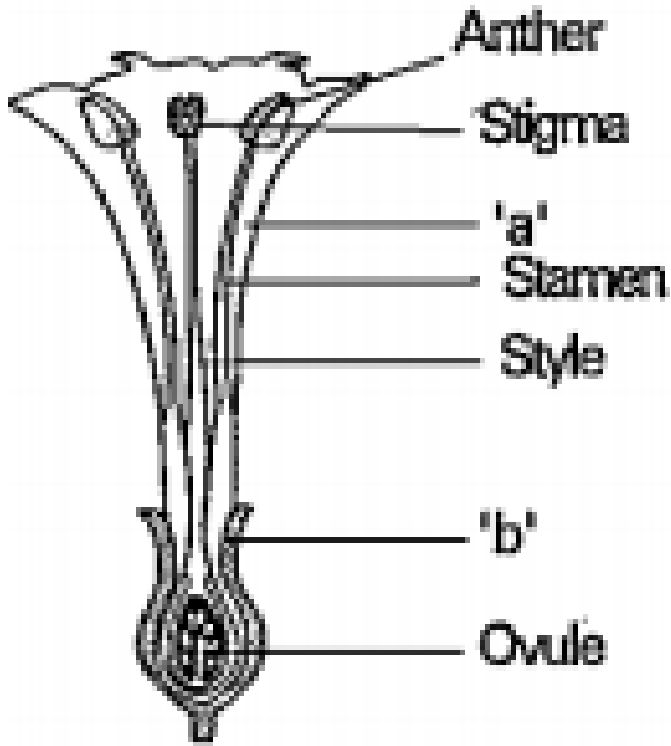


Which hormone stimulate the production of male gametes?



[Watch Video Solution](#)

272. Observe the diagram and answer the following.

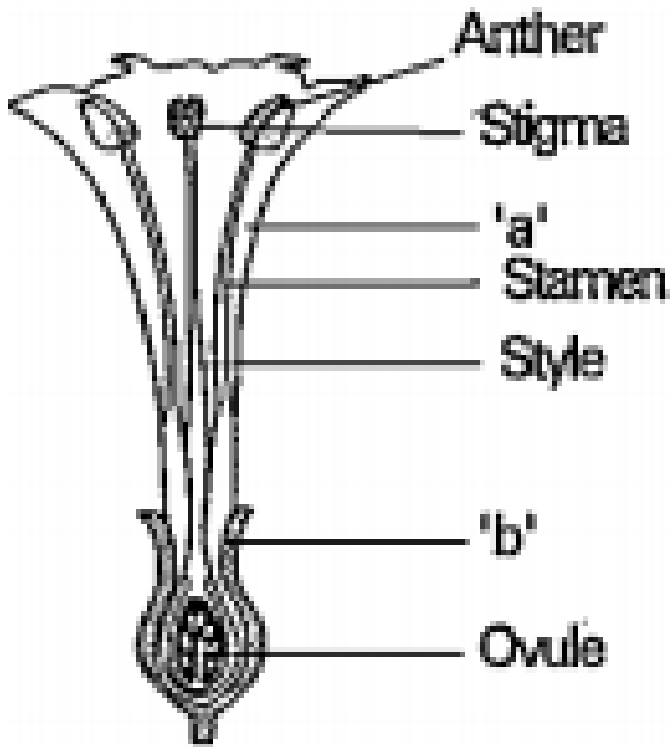


Label the parts a,b from above diagram.



[Watch Video Solution](#)

273. Observe the diagram and answer the following.

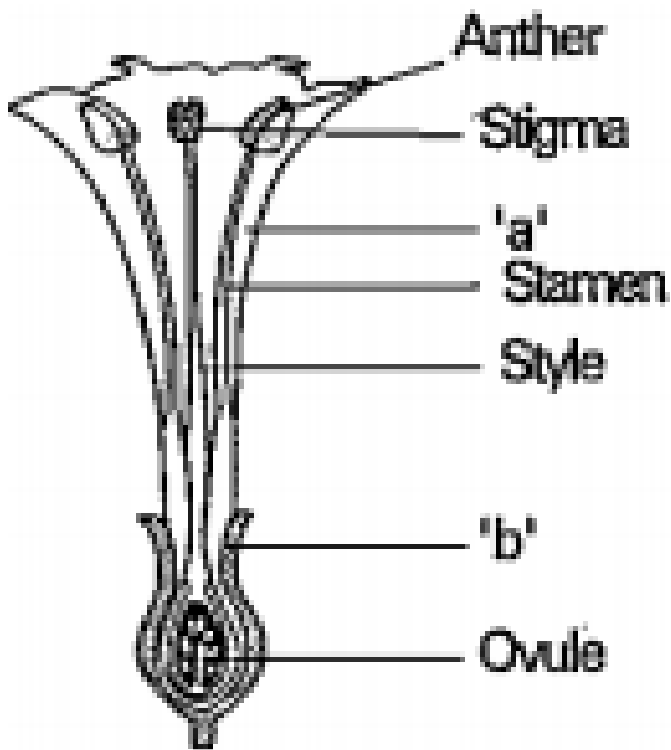


Which parts of flower are known as essential parts?



[Watch Video Solution](#)

274. Observe the diagram and answer the following.

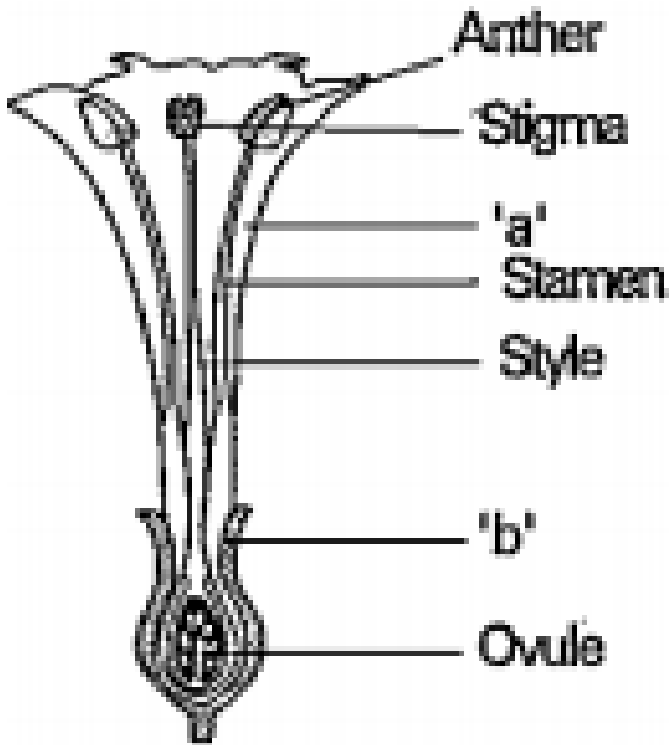


If only stamens are present in flower what does it indicate.



Watch Video Solution

275. Observe the diagram and answer the following.



Carpells are present in which part of flower?



Watch Video Solution

Exercise

1. Read the following passage and answer the following questions.

Rhizopus produces hundreds of microscopic reproductive units called spores .When the spore case bursts,the spores spreads into air .Under favourable condition like damp and warm condition .They germinate and produce

new individuals.

What is the scientific name of fungi?



[Watch Video Solution](#)

2. Read the following passage and answer the following questions.

Rhizopus produces hundreds of microscopic reproductive units called spores .When the spore case bursts,the spores spreads into air .Under favourable condition like damp and warm condition .They germinate and produce

new individuals.

From which part spores are produced?



Watch Video Solution

3. Read the following passage and answer the following questions.

Rhizopus produces hundreds of microscopic reproductive units called spores .When the spore case bursts,the spores spreads into air .Under favourable condition like damp and warm condition .They germinate and produce

new individuals.

Which condition is suitable for spores?



Watch Video Solution

4. Read the following passage and answer the following questions.

Rhizopus produces hundreds of microscopic reproductive units called spores .When the spore case bursts,the spores spreads into air .Under favourable condition like damp and warm condition .They germinate and produce

new individuals.

How fungi are reproduces?



Watch Video Solution

5. Read the following table and answer the following.

Process	Organisms
Fission	Single celled organisms
Budding	Fungi
Fragmentation	Fungi
Regeneration	Planaria
Sporulation	Fungi
Parthenogenesis	Fruit yielding plants

In which organisms we observe binary fission?





[Watch Video Solution](#)

6. Read the following table and answer the following.

Process	Organisms
Fission	Single celled organisms
Budding	Fungi
Fragmentation	Fungi
Regeneration	Planaria
Sporulation	Fungi
Parthenogenesis	Fruit yielding plants

What is meant by sporulation?



[Watch Video Solution](#)

7. Read the following table and answer the following.

Process	Organisms
Fission	Single celled organisms
Budding	Fungi
Fragmentation	Fungi
Regeneration	Planaria
Sporulation	Fungi
Parthenogenesis	Fruit yielding plants

How parthenogenesis takes place?



[Watch Video Solution](#)

8. Read the following table and answer the following.

Process	Organisms
Fission	Single celled organisms
Budding	Fungi
Fragmentation	Fungi
Regeneration	Planaria
Sporulation	Fungi
Parthenogenesis	Fruit yielding plants

In which organism regeneration observed?



[Watch Video Solution](#)

9. Name the surgical birth control method in males.



[Watch Video Solution](#)

10. Read the passage and answer the following.

The prevention of pregnancy in woman by preventing fertilisation is called contraception. Any device or chemical which prevents pregnancy is called a contraceptive. Physical device like condoms in males and diaphragm (cap) for woman are used. Pills for male and female are available which prevent pregnancy. Intra uterine device called copper-t, loop etc., also very effective in preventing pregnancy. Surgical method of birth

control for males and females are vasectomy and tubectomy.

What is the intra uterine device used in women?



[Watch Video Solution](#)

11. Name the surgical birth control method in males.



[Watch Video Solution](#)

12. Read the passage and answer the following.

The prevention of pregnancy in woman by preventing fertilisation is called contraception. Any device or chemical which prevents pregnancy is called a contraceptive. Physical device like condoms in males diaphragm (cap) for woman are used. Pills for male and female are available which prevent pregnancy. Intra uterine device called copper-t, loop etc., also very effective in preventing pregnancy. Surgical method of birth

control for males and females are vasectomy and tubectomy.

What is the purpose of contraception?



[Watch Video Solution](#)

13. The part of the female reproductive system that produces the eggs.....

A. Ovary

B. Epididymis

C. Cervix

D. fallopian tube

Answer:



Watch Video Solution

14. The term that we use to describe a sperm cell fusing with an egg cell.....

A. fragmentation

B. fermentation

C. fertilisation

D. fusion.

Answer:



Watch Video Solution

15. Which part of the male reproductive system produces (human) the sperm cell?

A. Vas deference

B. Epididymis

C. Seminiferous tubules

D. Scrotum.

Answer:



Watch Video Solution

16. How does the sperm break through the egg cell membrane ? Choose the option you think is right.

A. Tears a hole in the membrane

B. Dissolves the membrane with chemicals

C. Bites through the membrane with teeth

D. Squeezes through gaps in the membrane.

Answer:



Watch Video Solution

17. Why are egg cells large than sperm cells?

Choose the option you think is right.

A. Egg cells have more cells in them

B. Have food store to help growth after fertilisation.

C. Have thicker cell membranes

D. Have larger nuclei.

Answer:



Watch Video Solution

18. Which of these things will affect the way a foetus grows? Choose the option you think is right.

A. Chemicals in cigarette smoke

B. Alcohol

C. Drugs

D. All of the above.

Answer:



Watch Video Solution

19. Which of the following is the correct sequence of steps in the human life cycle?

Choose the right option.

A. Babyhood, childhood, adolescence,
adulthood

B. Childhood, babyhood, adulthood,
adolescence

C. Adolescence, babyhood, adulthood,
childhood

D. none of these.

Answer:



Watch Video Solution

20. Male reproductive system consist of

A. Umbilical cord

B. Testes

C. Fallopian tubes

D. Placenta

Answer:



Watch Video Solution

21. Seminiferous tubules are lined by

- A. Epididymis
- B. Vas deferens
- C. Vas efferents
- D. Urethra.

Answer:



Watch Video Solution

22. Acrosome of sperm is derived from

A. Digestion

B. Locomotion

C. Excretion

D. Fertilisation

Answer:



Watch Video Solution

23. Graffian follicles are present in

A. Fallopian tube

B. Uterus

C. Vagina

D. Ovary.

Answer:



Watch Video Solution

24. Number of ova released at a time in female human being is

A. 4

B. 2

C. 1

D. 3

Answer:



Watch Video Solution

25. Foetus is connected to the wall of uterus of the mother by

- A. Placenta
- B. Umbilical cord
- C. Fallopian tube
- D. Epididymis

Answer:



Watch Video Solution

26. Carpels are present in

A. Androecium

B. Pistils

C. Ovules

D. Seeds

Answer:



Watch Video Solution

27. What are the most important floral organs required for sexual reproduction ?

- A. Calyx and corolla
- B. Corolla and androecium
- C. Gynoecium and thalamus
- D. Gynoecium and androecium

Answer:



Watch Video Solution

28. Meiosis takes place in

A. Stamen

B. Anther lobe

C. Pollen mother cell

D. Pollen grains

Answer:



Watch Video Solution

29. I Formed due to the fusion of second male gamete with fusion nucleus. I am in '3n' condition . Who am I ?

A. Egg

B. Secondary nucleus (or) Fusion nucleus

C. Zygote

D. Synergids

Answer:



Watch Video Solution

30. The non-essential parts of a flower are the

A. Ovule

B. Androecium

C. Style and stigma

D. Calyx and corolla

Answer:



Watch Video Solution

31. Root part is represented in mature embryo
by

A. Plumule

B. Radicle

C. Chalaza

D. Cotyledons

Answer:



Watch Video Solution

32. The egg cell in a flowering plant is produced in the

A. Double fertilization

B. Single fertilization

C. Triple fertilization

D. None of these.

Answer:



Watch Video Solution

33. Stem cutting is an artificial methods of vegetative propagation give another example?

- A. Below the node
- B. Above the node
- C. On the node
- D. Across the node

Answer:



Watch Video Solution

34. Potato is a

A. Modified stem

B. Modifies root

C. Modified leaf

D. None of these.

Answer:



Watch Video Solution

35. Sporulation occurs during

A. Favourable conditions

B. Unfavourable conditions

C. Rainy season

D. Spring season

Answer:



Watch Video Solution

36. Vegetative propagation is preferred by

A. Vegetative crop plants

B. Horticulture or ornamental plants

C. Pulses

D. Oil yielding plants

Answer:



Watch Video Solution

37. Binary fission is seen in _____

A. Euglena

B. Hydra

C. Mucor

D. Chamydomonas

Answer:



Watch Video Solution

38. Flat worms reproduce through

A. Fission

B. Fragmentation

C. Budding

D. Parthenogenesis

Answer:



Watch Video Solution

39. Which of the following propagates by means of leaves?

A. Fern

B. Bryophyllum

C. Carrot

D. Onion

Answer:



Watch Video Solution

40. Monoploid offsprings of ants are

A. Males

B. Females

C. Bisexual

D. None of these

Answer:



Watch Video Solution

41. Formation of spores is seen in

- A. Rhizopus
- B. Bacteria
- C. Mosses
- D. All the above

Answer:



[Watch Video Solution](#)

42. In fern plant leaves are called

A. sporophyll

B. Microphyll

C. Macrophylls

D. Sporangia

Answer:



[Watch Video Solution](#)

43. In which organisms do you observe external fertilization ?

A. Fish and snakes

B. Crocodiles and lizards

C. Man

D. Frogs and fish

Answer:



Watch Video Solution

44. External fertilization of frog occurs in

A. oviduct

B. Water

C. Vasa deference

D. Air

Answer:



Watch Video Solution

45. Fertilization in humans is practically feasible only if :

A. Oviduct

B. Follicle

C. Uterus

D. Ovary.

Answer:



Watch Video Solution

46. This is not an embryonic membrane.

A. Amnion

B. Allantois

C. Uterus

D. Placenta

Answer:



Watch Video Solution

47. Identify the correct sentence

A. Prophase → Anaphase → Telophase

→ Metaphase

B. Prophase → Metaphase → Anaphase

→ Telophase

C. Metaphase → Telophase → Prophase

→ Anaphase

D. Prophase → Anaphase → Metaphase

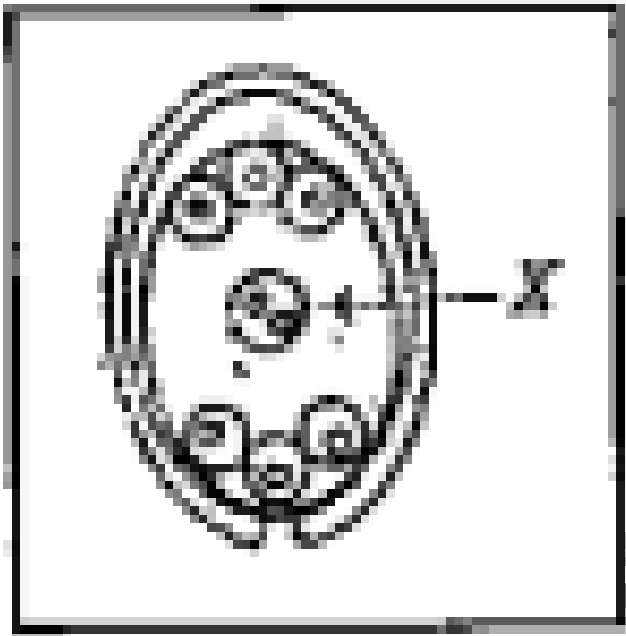
→ Telophase.

Answer:



Watch Video Solution

48. In the diagram, 'X' denotes.....



A. Synergids

B. antipodals

C. polar nuclei

D. egg cell

Answer:



Watch Video Solution

49. 1. Fragmentation Fungi
 2. Budding Paramecium
 3. Binary fission Flatworm

identify the mis-matched pairs.

A. 1,2

B. 2,3

C. 1,3

D. 1,2,3

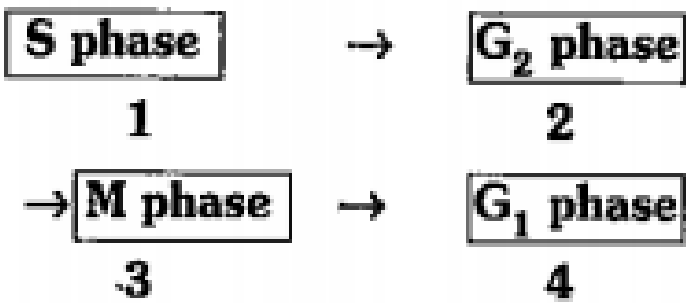
Answer:



Watch Video Solution

50. Arrange the stages of cellll-cycle of mitosis

in correct order:



A. 4,1,2,3

B. 2,3,4,1

C. 4,2,3,1

D. 1,3,4,2

Answer:



Watch Video Solution

51. How does sperm enter ovum?

A. By making hole an ovum

B. Triggering the membrane of ovum with chemicals

C. Crushing the membrane with teeth

D. Enter through the gaps of ovum.

Answer:



Watch Video Solution

52. Name the different phases of cell division.

A. In tests

B. In ovaries

C. In both

D. In all body cells

Answer:



Watch Video Solution

53. In synthetic stage of cell division cycle which substance is synthesized more?

A. RNA

B. RNA and proteins

C. DNA

D. Glucose

Answer:



Watch Video Solution

54. Which animal is having less number of Chromosomes?

A. Onion

B. Monkey

C. Ascaris

D. Rat

Answer:



Watch Video Solution

55. The layer of uterus, which exhibits strong contraction during the delivery of the baby is

A. Not having labour pains

B. Amniotic fluid flows out due to the rupture of amnion

C. The contractions of the walls of uterus are weak

D. The child turns cross and comes out.

Answer:





Watch Video Solution

56. After fertilization implantation of zygote takes place in the uterine walls of females after

A. some months

B. three weeks

C. month

D. 7-10 days

Answer:



Watch Video Solution

57. In plants, the fusion of male gamete with secondary nucleus results is ?

- A. Embryosac
- B. Endosperm
- C. Colyldons
- D. Spores

Answer:



58. which one of the following seeds does not have endosperm?

Maize

Rice

Wheat

Red gram

A. I, ii

B. I, iii

C. iii

D. iv

Answer:



Watch Video Solution

59. The correct statement about the membrane grows itself around the embryo

it is filled with a fluid

it nourishes humidity to the developed embryo

It protects the embryo from mechanical

shocks.

It is called chorion

A. I only

B. ii & iii

C. I, ii, iii

D. all of the above.

Answer:



Watch Video Solution

60. Which of the following statements is not true about budding in yeast?

A. A bud may arise from any part of the parent cell

B. Before detaching from the parent body, a bud may form from another bud.

C. A bud may separate from the parent body and develop into a new individual.

D. A bud arises from a particular region on a parent body.

Answer:



Watch Video Solution

61. Wrong statement about meiosis (i) Meiosis occurs during gamete formation , (ii) Meiosis has 2 stages , (ii) Though division occurs in 2 stages chromosomal division occurs only once (iv) Four daughter nuclei formed

A. i,ii

B. ii& iii

C. iii only

D. All of the above.

Answer:



Watch Video Solution

62. When food is present in mouth, the quantity of saliva....

A. doesn't change

B. decreases

C. increases

D. None of the above

Answer:



Watch Video Solution

63. What is the gestation period in human beings ?

A. 330 days

B. 20 days

C. 280 months

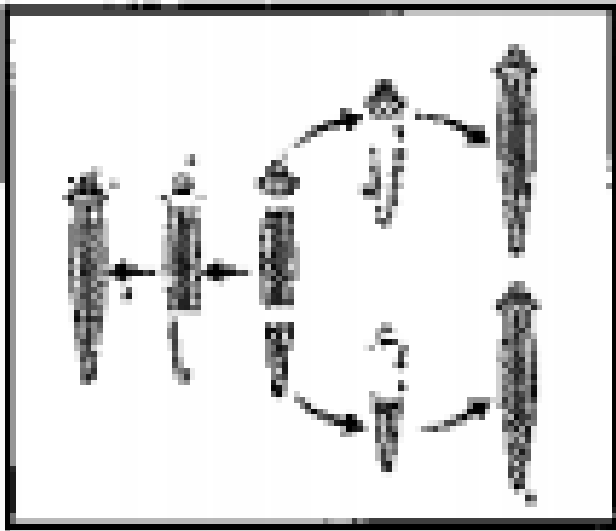
D. 280 days

Answer:



Watch Video Solution

64. What does this diagram represent?



- A. Budding in Hydra
- B. Multiple fission in Bacteria
- C. Regeneration in Planaria
- D. Fragmentation in Spirogyra

Answer:



Watch Video Solution

65. Match the following columns

List – I

- 1) Copper T**
- 2) Spermicide**
- 3) Tubectomy**

List – II

- a) Vasa deferentia**
- b) Contraceptive device**
- c) Closing of fallopian tube**

A. 1-a,2-b,3-c

B. 1-b,2-a,3-c

C. 1-c,2-b,3-a

D. 1-b,2-c,3-a

Answer:



Watch Video Solution

66. Consider the following.

a - Girls only after 18 years of age can be said to be prepared for the marriage

b - Every year 21% of teenage mothers die during delivery.

A. both a & b are true b explains 'a'

B. both a & b are true b doesn't explain 'a'

C. a is true, b is false

D. a is false, b is true.

Answer:



Watch Video Solution

67. What is the cause for formation of seedless fruits ?

A. Remove the seeds from fruits

B. Parthenogenesis

C. Androgenesis

D. No such fruits

Answer:



Watch Video Solution

68. 1. stolen 2. Bulbs, 3. Rhizomes Pick out the right option for a bove methods of vegetative

propagation.

a) Vallisnaria b) Onion c) Potato d) Turmeric

A. 1-a,2-b,3-c

B. 1-b,2-a,3-d

C. 2-b3-c,1-a

D. 1-a,2-b,3-d

Answer:



Watch Video Solution

69. The supplies nutrients to sperm. A)

Prostate gland b) Cowper gland c)

Testosterone d) Adrenal gland

A. a,c

B. c,b

C. b,d

D. a,b

Answer:



Watch Video Solution

70. ovary → → Ovum → Ovulation
→ Fallopian tube → Uterus. What will be
in the box?

- A. Ovary
- B. Graffian follicle
- C. Cavity of ovule
- D. Canal

Answer:



Watch Video Solution

71. Bottle gourd, Papaya have the ...flowers

A. unisexual

B. bisexual

C. cyclic

D. ray

Answer:



Watch Video Solution

72. The reasons for the enlarged cotyledons in beans is

- A. Pericarp
- B. Endosperm
- C. Swelling in water
- D. Artificial one

Answer:



Watch Video Solution

73. ART stands for

A. Anti Retrogressive Therapy

B. Anti Resonance Therpay

C. Anti retroviral Therapy

D.

Answer:



Watch Video Solution

74. ASHA stands for

A. Accredited Social Health Association

B. Accredited Social Health Activist

C. AIDS Social health Activist

D. AIDS Sexual Health Activist

Answer:



Watch Video Solution

75. STD stands for

A. Subscribers Trunk Demand

B. Sexually Trunk Dailing

C. Sexually Transmitted Diseases

D. Sexually Telephoned Dialing

Answer:



Watch Video Solution

76. The scientist who discovered tissue culture is

A. M.S.Swaminathan

B. O.Maheswari

C. Haberlandt

D. Ion Wilmont

Answer:



Watch Video Solution

77. Which of the following is not concerned with stored bread mould?

A. Blackish material forms on the bread

B. Formed fungi is Rhizopus

C. The fungi Rhizopus keeps the bread
fresh

D. Spores are formed in Rhizopus

Answer:



Watch Video Solution

78. Find out the incorrect sentence regarding fertilization in fish.

A. External fertilization

B. Female produces numerous ova

C. Male produces only one sperm

D. Fertilisation is influenced by nature

Answer:



Watch Video Solution

79. Incorrect statement about post fertilization changes in the uterus

- A. Uterus remains small in size with thin layer of cells
- B. Walls of uterus become thick and smooth
- C. Blood circulation increases in the uterus
- D. Embryonic layers develop in the uterus

Answer:



Watch Video Solution

80. Find out the incorrect statement regarding child birth

A. Child will be healthy only after completion of gestation period

B. Delivery will be easy if the head of foetus come out first

C. Labour pains occurs due to injection give by doctor

D. Delivery of baby becomes tough if legs
come out mother's womb

Answer:



Watch Video Solution

81. Which of the following is not concerned
with pollination?

A. The falling of pollen grains on the
stigma is pollination

- B. The pollen grains of one flower did not fall on the same flower
- C. The pollen grains of one flower fall on the another flower
- D. Pollination helps in fertilization.

Answer:



Watch Video Solution

82. Write about the structure of embryo sac.

A. comprises 7 cells, 6 nuclei

B. comprises 7 cells, 8 nuclei

C. comprises 6 cells, 6 nuclei

D. comprises 8 cells, 8 nuclei

Answer:



Watch Video Solution

83. The cells in embryo sac are i) Antipodals ii) Synergids iii) Polar nuclei iv) Female gametohpyte

A. iv only

B. iii, iv only

C. I,ii only

D. All

Answer:



Watch Video Solution

84. Who discovered mitosis ?

A. Wilhelum Roux

B. Gregor Mendel

C. Walther Flemming

D. Robert Remak

Answer:



Watch Video Solution

85. Find out the correct sentence

A. Double fertilization occurs in

Angiosperms

- B. Double fertilization occurs in
Gymnosperms
- C. Asexual reproduction occurs in all
flowering plants
- D. Single fertilization occurs in flowering
plants.

Answer:



Watch Video Solution

86. The scientist who discovered that production of new cells occur through cell division is

- A. Robert Remak
- B. Virchow
- C. Walther Flemming
- D. Gregor Mitos

Answer:



Watch Video Solution

87. Mitos means

- A. Division
- B. Fine threads
- C. Chromosomes
- D. Nucleus

Answer:



Watch Video Solution

88. The scientist who expelled his research views by thinking, though he has poor eye sight is

- A. Theoder Boveri
- B. Wilhelm Roux
- C. Walther Flemming
- D. August Weisemann

Answer:



Watch Video Solution

89. The scientist who has told about the information of meiosis

A. Walther Flemming

B. Theoder Boveri

C. August Weismann

D. Wilhelm Roux

Answer:



Watch Video Solution

LIST-A

1) Fragmentation

2) Budding

3) Binary fission

LIST-B

a) Fungi

b) Paramecium

c) Flat worm

90.

Identify the mis-matched pairs.

A. 1,2

B. 2,3

C. 1,3

D. 1,2,3

Answer:



Watch Video Solution

91. Which of the following is correct regarding the functions of Lactobacillus?

1) Making of curd 2) To luke warm milk 3) To make sweet 4) To make hot milk cool

A. 1,2

B. 1,2,3

C. 2,3,4

D. 1 only

Answer:



Watch Video Solution

92. In ants, king ant along with queen ant and labour, ants exists in numerous 1) These are formed by division of ovule 2) Parthenogenesis is the reason Choose the correct one from the above statements

A. 1 only

B. 2 only

C. Both are correct

D. Both are wrong

Answer:



Watch Video Solution

93. Cut end of tail in lizard regenerates. But it doesn't happen in monkey. Why?

- A. Tail of lizard is important
- B. Monkey can survive even without tail
- C. Regeneration capacity is less in monkey
- D. Regeneration capacity is less in lizard

Answer:



Watch Video Solution

94. The part called ...(i)..... Growing in the soil is grafted with(ii).....of the plant

A. i-stock,ii-branch

B. i-scion,ii-bud

C. i-stock,ii-scion

D. i-branch, ii-bud

Answer:



Watch Video Solution

95. What is the best method to obtain desirable characters in a plants ?

A. i-only

B. ii-only

C. iii-only

D. iv-only

Answer:



Watch Video Solution

96. Tilak left a piece of bread on the table. Next day it becomes black. The reason 1) fungal growth appears 2) Rhizopus appears on the bread 3) Bacterial growth appears 4) Virus affects the bread

A. i,ii,iii correct

B. ii,iii correct

C. iii,iv correct

D. I,ii, correct

Answer:



Watch Video Solution

97. Fern with false indusium is

A. Not correct

B. Correct

C. Can't say

D. Doubt

Answer:



Watch Video Solution

98. Find out the incorrect answer. i) Chorion is formed from intestine of embryo ii) Amnion is filled with amniotic fluid iii) Placenta is formed from the tissues of mother and foetus iv) The layer that surrounds the embryo is called embryonic layer

A. I,iv

B. ii,iii

C. ii,iii,iv

D. I,ii,iii

Answer:



Watch Video Solution

99. The number of cells in embryo sac 1) 7 cells

7 nuclei ii) 7 cells, 8 nuclei

A. I,ii correct

B. i-false, ii - is true

C. i-false, ii- false

D. i&ii are false

Answer:



Watch Video Solution

100. Find out the correct sentence a)

Endosperm is formed from the fusion of male

nucleus with secondary nucleus b) Endosperm
converts into a seed

A. both a & b are true

B. a is true, b is false

C. a is false, b is true

D. both a & b are false

Answer:



Watch Video Solution

101. Find out the correct statement a - Mitos means fine threads b- Mitosis was discovered by Walther Flemming

A. both a & b are true

B. a is true, b is false

C. a is false, b is true

D. both a & b are false

Answer:



Watch Video Solution

102. consider the following sentences a The number of chromosomes remain same through out the generations. B - Though the cell division occurred the chromosomal number remains constant

A. both a & b are true b explains 'a'

B. both a & b are true b doesn't explain 'a'

C. a is true, b is false

D. a is false, b is true.

Answer:



Watch Video Solution

103. a-skin cells stimulate and divide at site of injury and form new tissues b- Cancer cells deonot respond to controlling factors and perform division.

A. both a & b are true, b explain 'a'

B. both a & b are ture b doesn't explain 'a'

C. a is true, b is false

D. a is false, b is true.

Answer:



Watch Video Solution

104. Which of the following reproduce through spores? 1) Mucor 2) Bacteria 3) Rhizopus 4) Fern

A. I only

B. ii,iii,iv only

C. ii,iii only

D. All

Answer:



Watch Video Solution

105. Find out the correct sentence a-
Centromeres in metaphase split and b-Nucleus
divides into two in prophase

A. both a & b are true

B. a is true, b is false

C. a is false, b is true

D. both a & b are false

Answer:



Watch Video Solution

106. a-Meiosis occurs in two stages b- Even though meiosis has two divisions. Chromosomal division occurs only once.

A. both a & b are true, a explains b

B. both a & b are true b doesn't explain 'a'

C. a is true, b is false

D. a is false, b is true.

Answer:



Watch Video Solution

107. Maintenance of equal number of chromosomes in(i)....division and chromosomal number reduced to half in (ii)..... Division

A. i-meiotic, ii-mitotic

B. i-mitosis,ii-meiosis

C. i-equal division, ii, mitotic

D. i-mitosis, ii-equal division

Answer: i-equal division



Watch Video Solution

108. AIDS : Virus :: Syphilis?

A. Virus

B. Bacteria

C. Fungus

D. Protozoan

Answer:



Watch Video Solution

109. Gonorrhoea: ? :: Syphilis : Bacteria

A. Virus

B. Bacteria

C. Fungus

D. Protozoan

Answer:



Watch Video Solution

110. Consider the following.

a - Girls only after 18 years of age can be said to be prepared for the marriage

b - Every year 21% of teenage mothers die during delivery.

A. both a & b are true. Explains 'a'

B. both a & b are true b doesn't explain 'a'

C. a is true, b is false

D. a is false, b is true.

Answer:



Watch Video Solution

111. One of the following sentences is not correct about fission

A. This occurs in unicellular organisms

B. Rarely occurs in man

C. Fragments show identical characters

D. Binary and multiple fission are the types of fissions.

Answer:



Watch Video Solution

112. Choose the correct statement regarding budding.

A. Organism divides parental organisms by fission

B. Body divides into pieces

C. Occurs with fusion of gametophytes

D. Some projection grow form the body

which are identical

Answer:



Watch Video Solution

113. Identify the mis-matched pair .

(1) Budding - Yeast

(2) Fission - Paramecium

(3) Fragmentation - Bees

A. I only

B. iii only

C. ii,iii

D. All

Answer:



Watch Video Solution

List- A

List-B

114.

1. Fragmentation

–Fungi

2. Budding

–Paramecium

3. Binary fission

–Flatworm

Write the mis-matched pairs.

A. ii only

B. iii only

C. i,ii,iii

D. All

Answer:



Watch Video Solution

115. Find out the wrong statement regarding regeneration.

A. Every detached piece of earthworm regenerates

B. Differentiated piece of Planaria produces daughter individual

C. Only the tail of lizard grows
Regeneration capacity is less in man

D.

Answer:



Watch Video Solution

116. Consider the statements a & b a - vasa deferentia forms epididymis b - sperms are produced in millions

A. both a & b are true

B. a is true, b is false

C. b is true, a is false

D.

Answer:



Watch Video Solution

117. Semen is a gelatinous substance. It is secreted by

- A. Salivary and cowper's glands
- B. Cowper's and gastric glands
- C. Semnal vesicles and cowper's glands
- D. Gastric and coweper's glands

Answer:



Watch Video Solution

118. Consider the following sentences a-
Production of sperms start from the age 13 in
males. B - Production of ova starts at the same
age in females.

A. both a & b are true

B. a is true, b is false

C. b is true, a is false

D. both a & b are false

Answer:



Watch Video Solution

119. The correct statement about the membrane grows itself around the embryo

it is filled with a fluid

it nourishes humidity to the developed embryo

It protects the embryo from mechanical

shocks.

It is called chorion

A. I only

B. ii & iii

C. i,ii,iii

D. all of the above.

Answer:



Watch Video Solution

120. Wrong statement about allantois

A. It is formed from the intestine of embryo

B. Amniotic sac and chorion layers combine
at the all allantois stalk

C. This layer play a major role in child birth.

D. Allantois is the part that helps in
formation of umbilical cord.

Answer:



Watch Video Solution

121. Find out the wrong pair

- A. Haustroia - Cuscuta
- B. Testosterone - Ovary
- C. Granum - Chloroplast
- D. Epiglottis - Mouth

Answer:



Watch Video Solution

122. Which of the following is correct regarding the functions of Lactobacillus?

1) Making of curd 2) To luke warm milk 3) To make sweet 4) To make hot milk cool

A. I,ii

B. I,ii,iii

C. ii,iii,iv

D. I only

Answer:



Watch Video Solution

123. The type of flowers you observed in bottle gourd

- A. Unisexual flowers
- B. Bisexual flowers
- C. Hetreosexual flowers
- D. Heterozygous flowers

Answer:



Watch Video Solution

124. The plants species generally propagated by layering in your area

A. Rose

B. Hibiscus

C. Bryophyllum

D. A & B

Answer:



Watch Video Solution

125. What is the percentage of water in the ground ?

- A. To keep the seeds wet in condition
- B. To enhance dormancy
- C. To destroy germination
- D. To bring out leaves

Answer:



Watch Video Solution

126. Ramu said that it is very essential to create more awareness in Andhra Pradesh and Telangana on the risk of HIV infection and AIDS . Do you believe support him ? If so, How can you support his statement ?

A. I,iii,i

B. I,ii,iii

C. iii,ii,i

D. ii,iii,i

Answer:



Watch Video Solution

127. The legal age of girls marriage in India was declared by

- A. Parents
- B. Priests
- C. Government of India
- D. Women organisation

Answer:



128. The incorrect reason about "Child marriages - an illegal act"

- A. Immaturity of reproductive organs
- B. Incapability in nourishing the children
- C. Less dowry earning
- D. Lack of capability on family responsibility

Answer:



129. The factors for spreading of HIV - AIDS 1) Unprotected sex 2) Illegal sex activities 3) Unprotected blood tranfusion 4) Mosquito bite

A. I,ii,iii

B. ii,iii,iv only

C. I,ii

D. iv

Answer:



Watch Video Solution

130. Red ribbon club educates the people on

....

A. Leprosy

B. Family planning

C. AIDS

D. Ebola disease

Answer:



131. The state that is in top most place with female and male ratio

A. Andhra pradesh

B. Rajasthan

C. Kerala

D. Madhya Pradesh

Answer:



132. Read the paragraph given below and answer.

Most of the plants are flowering plants. Their characters are quite remarkable. A sal tree grows in Himalayan mountains, a giant cactus in the Sahara desert Flowering plant possess

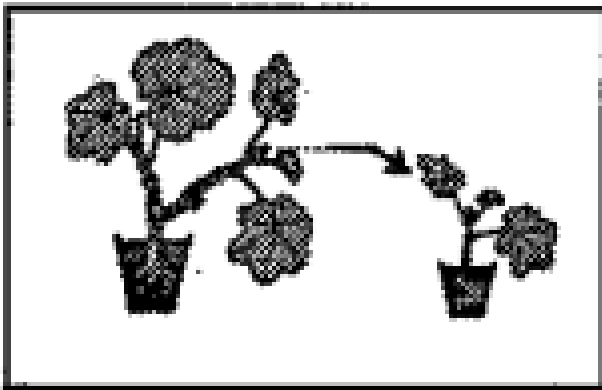
- A. Bisexual flowers
- B. Unisexual flowers
- C. A or B
- D. Only Heterozygous flowers

Answer:



Watch Video Solution

133. Find out the vegetative propagation depicts in the picture



A. Cutting

B. Grafting

C. Ground layering

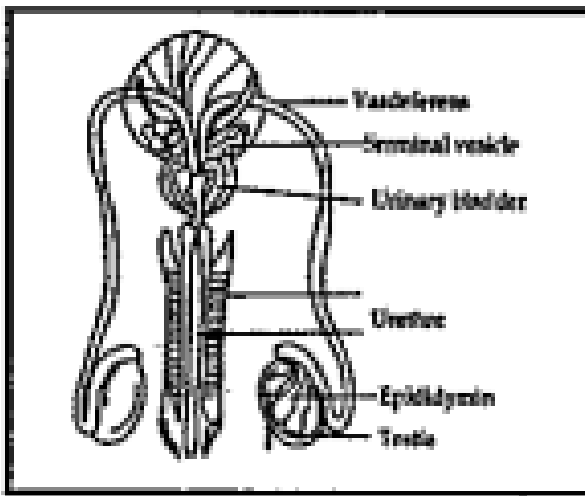
D. Root buds

Answer:



Watch Video Solution

134. Consider the given picture What will be consequence if vasadeferntia is detached?



- A. Sperms are not produced
- B. Sperms do not reach vasdeferencs
- C. Person will die
- D. Cowper gland become inactive

Answer:



Watch Video Solution

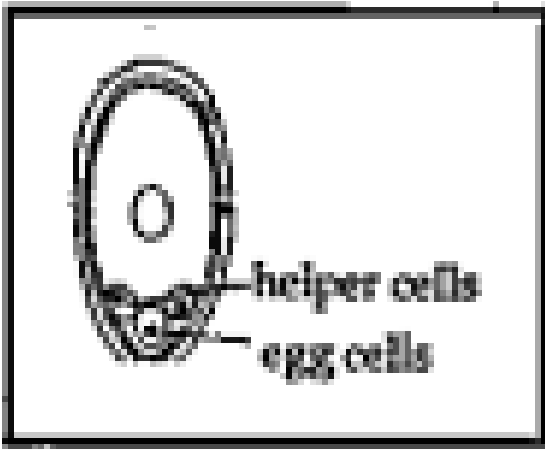
135. See the picture of pollen grain. What sort of division helps in formation of pollen grain ?

- A. Mitosis
- B. Unequal division
- C. Meiosis
- D. Unnatural division

Answer:



136. The given picture depicts.....



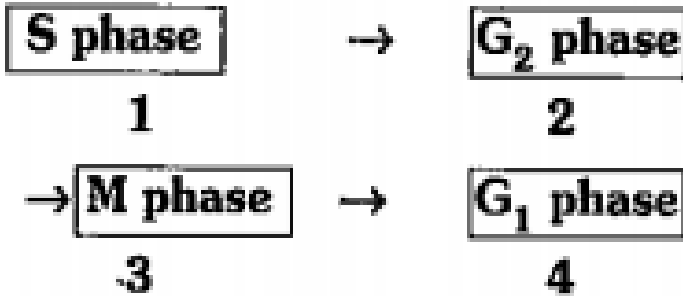
- A. Female gametophyte
- B. Antipodal cells
- C. Secondary cells
- D. Helper cells

Answer:



Watch Video Solution

137. Arrange the stages of cell cycle of mitosis in correct order:



A. G_1 , G_2 , S, M

B. G_1 , G_2 , M, S

C. G_1, M, G_2, S

D. G_1, S, G_2, M

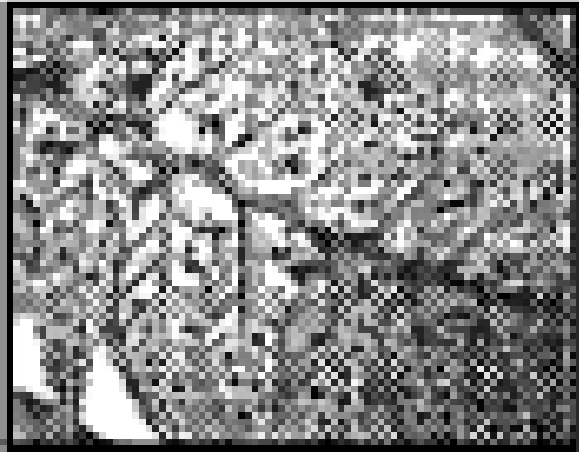
Answer:



Watch Video Solution

138. Find out the given picture.

www.ksars.org



A. Spores in neem leaf

B. Sori in fern

C. Fungi

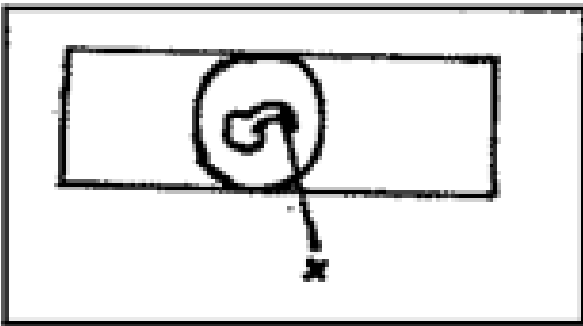
D. Spores in mango

Answer:



Watch Video Solution

139. The student observe the pollengrain under the microscope. It appears as below, 'x' indicates?



A. Matured nucelus

B. Pollen tube

C. Stigma

D. Tube cell

Answer:



Watch Video Solution

140. Harini is a pregnant. She has a doubt that how all the nutrients are supplied to the fetus. What is your answer to her doubt?



Watch Video Solution

141. How ill you appreciate cell division that help perpetuation of life?



Watch Video Solution

142. The menstrual cycle prepares the uterus for a fertilised egg. How long is an average menstrual cycle from start to finish ?



Watch Video Solution

143. Manju wants to buy some ornamental plants. After observing the plants, she wants to know about vegetative propagation. What questions would she like to ask?



Watch Video Solution

144. What is the first cells formed after the union of male gametes with egg ?

A. egg

B. secondary nucleus

C. Zygote

D. Synergids

Answer:



Watch Video Solution

145. Name the part of the seed which grows and develops into root on germination.

A. epicotyl

B. hypocotyl

C. radicle

D. plumule

Answer:



Watch Video Solution

146. Small plants grow at the edge of leaves of

A. Bryophyllum

B. Dahlia

C. Allium cepa

D. Vallisneria

Answer:



Watch Video Solution

147. The tree that grows in Himalayan mountain is

A. Salivary and cowper's glands

B. Cactus

C. Orchid

D. Potato

Answer:



Watch Video Solution

148. Who discovered mitosis ?

A. Walther Flemming

B. Theoder Boveri

C. August Weismann

D. Charles Darwin

Answer:



Watch Video Solution

149. In asexual reproduction of the following group, a large number of spores are formed in special structures.

A. Fungi

B. Fern

C. Mosses

D. all of the above.

Answer:



Watch Video Solution

150. The placenta is formed by

A. 6 week of pregnancy

B. 8 weeks of pregnancy

C. 12 weeks of pregnancy

D. 16 weeks of pregnancy

Answer:



Watch Video Solution

151. Amoeba and Yeast reproduce asexually by fission and budding respectively, because they are

- A. Fission
- B. Fragmentation
- C. Budding
- D. Conjugation

Answer:



Watch Video Solution

152. Which contraception method is related to males?

- A. Oral pils
- B. Tubectomy
- C. Vasectomy
- D. None of these

Answer:



153. Egg apparatus in the embryosac of angiosperms is

- A. Chalaza
- B. Funicle
- C. Micropyle
- D. Integument

Answer:



154. The diagrams below represent various processes associated with reproduction. Asexual reproduction by budding is represented by



(1)



(3)



(2)



(4)

A. Yeast only

B. Hydra only

C. Both Yeast and Hydra

D. Paramecium

Answer:



Watch Video Solution

155. Who discovered that chromosomes appear double in nature ?

A. Virchow

B. Robert Remak

C. Walther Flemming

D. Wilhelm Roux

Answer:



Watch Video Solution

156. In a cell cycle G_1 phase is marked by the

A. period between the completion of mitosis and the beginning of DNA

replication

B. Period of DNA synthesis leading to duplication of chromosomes.

C. The end of DNA synthesis leading to duplicatino of chromosomes

D. The mitotic cell devision phase

Answer:



Watch Video Solution

157. The organism which can grow from a separate piece of parent organisms and also reproduce sexually.

A. Flat worms

B. Moulds

C. Spirogyra

D. All the above

Answer:



Watch Video Solution

158. Graffian follicles are present in

A. Ovum

B. Sperm

C. Embryo

D. None of the above

Answer:



Watch Video Solution

159. One of the following is not a reason for foetal killing

A. Girl is not a capable person

B. Dowry problem

C. Sex-determination through ultra-scanning

D. Cause of "Kanyasulkam"

Answer:



Watch Video Solution

160. These are essential for keeping healthy sexual life

- A. Life skills
- B. Financial skills
- C. Sociological
- D. Personality skills

Answer:



Watch Video Solution

161. Whom do you consult to know about HIV-AIDS?

A. ASHA

B. USHA

C. Red Ribbon Express

D. A or C

Answer:



Watch Video Solution

162. We should think about controlling not only high population but also.....

- A. to create healthy society
- B. to create contraceptive methods
- C. to create high-tech culture
- D. to enhance low female rate

Answer:



Watch Video Solution

163. Declination in female sex ratio is due to

A. Inclination in males

B. Slanting in males

C. Female foeticides

D. Male foeticides

Answer:



Watch Video Solution

164. Which process of reproduction is shift from sexual to asexual mode?



Watch Video Solution

165. What is parthenogenesis ? Give example.



Watch Video Solution

166. What is meant by Totipotency ? Explain the process



[Watch Video Solution](#)

167. Explain the process of fertilization in plants.



[Watch Video Solution](#)

168. Statement I: AIDS is a disorder caused by HIV.

Statement II: HIV is a virus that damages immune system of its host.





[Watch Video Solution](#)