



# BIOLOGY

## BOOKS - MAXIMUM PUBLICATION

### MORPHOLOGY OF FLOWERING PLANTS

#### Exercise

1. How is pinnately compound leaf different from palmately compound leaf?



[Watch Video Solution](#)

2. What is meant by modification of root?

What type of root is found in

banyan

turnip

mangrove tree



[Watch Video Solution](#)

3. What is meant by modification of root?

What type of root is found in

banyan

turnip

mangrove tree



[Watch Video Solution](#)

4. What is meant by modification of root?

What type of root is found in

banyan

turnip

mangrove tree



[Watch Video Solution](#)

5. " Stilt roots are adventitious and give mechanical support". how does prop root help the plant?

A. prop root

B. stlit root

C. pneumatophore

D. pillar root

**Answer: B**



**Watch Video Solution**

**6.** Lateral branches arise from the base of main stem that grows aeriially at first and arch downwards in

A. pistia

B. mint

C. jasmine

D. both B & C

**Answer: D**



**Watch Video Solution**

**7. Pulvinus is found in the leaf base of**

A. rosaceae

B. leguminosae

C. malvaceae

D. solanaceae

**Answer: B**



**Watch Video Solution**

**8.** The appearance of more than one leaf at each node is represented by

A. china rose

B. sunflower

C. Alstonia

D. guava

**Answer: C**



**Watch Video Solution**

**9. Roots are significant in the exchange of gases**

A. pneumatophore

B. stilt root

C. pillar root



D. assimilatory root

**Answer: A**



**View Text Solution**

**10.** The type of flower cannot be divided into two similar halves in any vertical plane through centre is

A. actinomorphic

B. zygomorphic

C. assymmetric

D. both B & C

**Answer: C**



**Watch Video Solution**

**11. Ovary half inferior is seen in**

A. plum

B. china rose

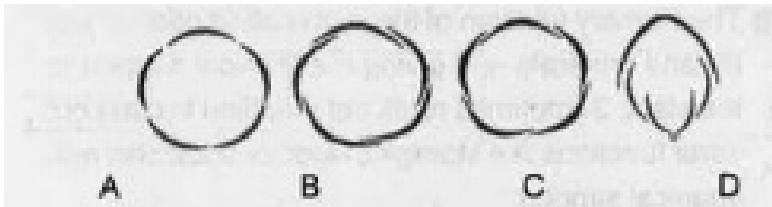
C. peach

D. both A & C

**Answer: D**

 [Watch Video Solution](#)

**12.** Find out the papilionaceous type of corolla from the given figure



A. A

B. B

C. C

D. D

**Answer: D**



**View Text Solution**

**13.** some characters of a flower is given below.  
bi sexual, sepals 5 and United, Petals 5 and  
United, stamens 5 and epipetalous, carpels 2,  
syncarpous and superior ovary.

a. write its floral formula.

b. identify the family

c. list any two economically important plants belonging to this family.

A. fabaceae

B. malvaceae

C. solanaceae

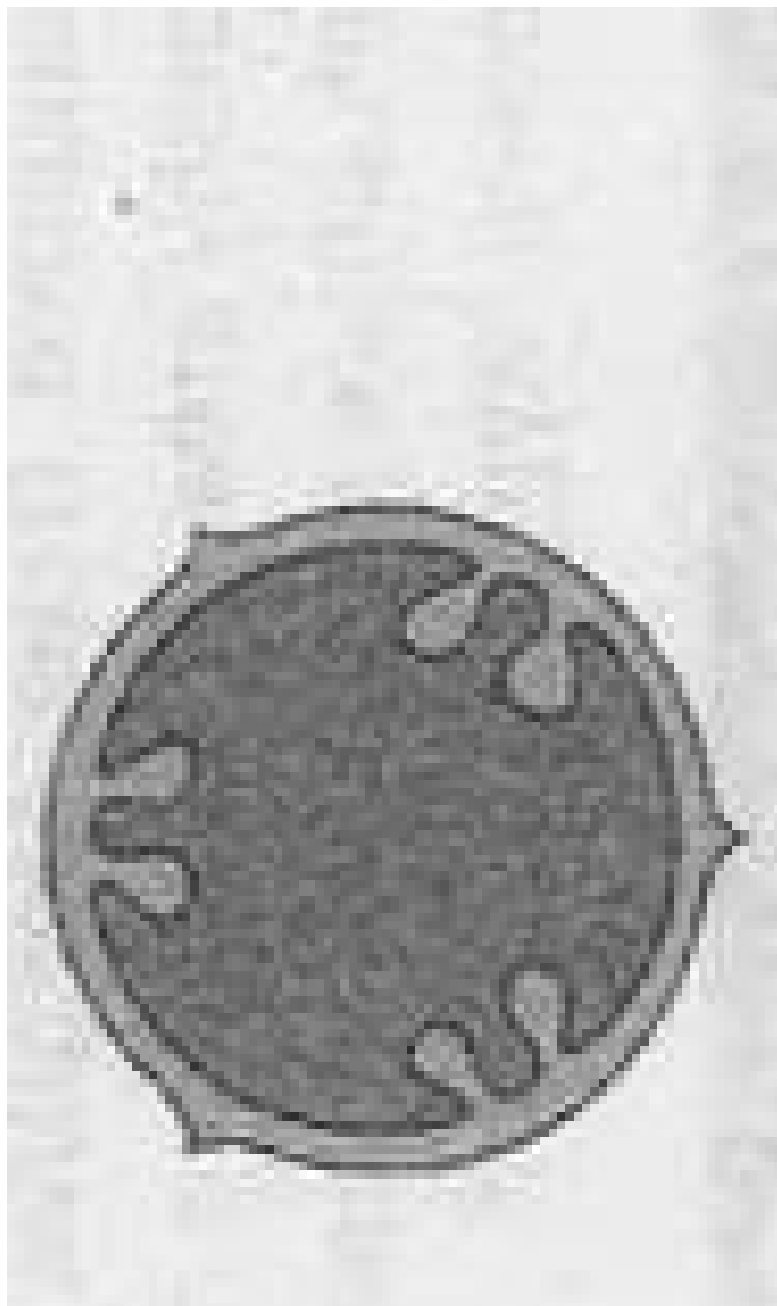
D. liliaceae

**Answer: A**



**Watch Video Solution**

**14.** The type of placentation given here is





A. axile

B. basal

C. marginal

D. parietal

**Answer: D**



[View Text Solution](#)

**15.** Hilum is found in

A. embryo

B. seed coat

C. radicle

D. chalaza

**Answer: B**



[Watch Video Solution](#)



16. Ashwagandha is represented by the family

A. fabaceae

B. papilionaceae

C. solanaceae

D. liliaceae

**Answer: C**



**Watch Video Solution**

17. Negatively geotropic roots are seen in

A. zaminkand

B. Rhizophora

C. maize

D. euphorbia

**Answer: B**



**Watch Video Solution**

**18.** In the following picture, plant part is modified for



A. storage

B. respiration

C. support

D. protection

**Answer: A**



**Watch Video Solution**

**19.** When the filaments of stamens are attached to the perianth, the condition is

A. Epiphyllous

B. epipetalous

C. adelphous

D. syngenesious

**Answer: A**



**Watch Video Solution**

**20.** In China rose, five carpels are fused at base.

This condition is called

A. Pentacarpellary, syncarpous and pentalocular

B. Pentacarpellary, apocarpous and pentalocular

C. polycarpellary, syncarpous and penalocular

D. Pentacarpellary, syncarpous and multilocular

**Answer: A**



**Watch Video Solution**

